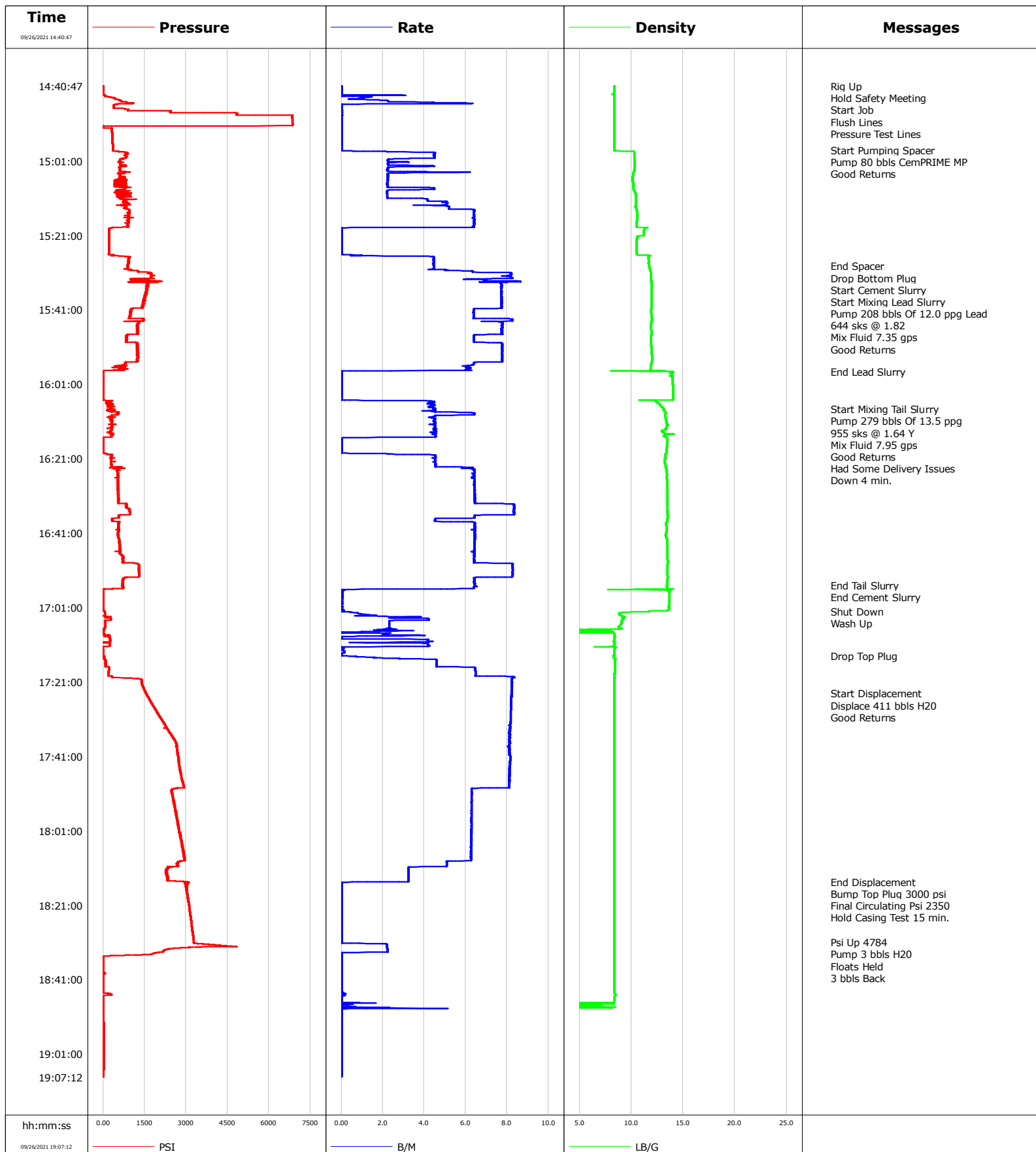


**Well** Shake 11-3HZ  
**Field** DJ  
**Engineer** Justin Zika  
**Country** United States

**Client** OXY  
**SIR No.** EAJ7-02550  
**Job Type** Production  
**Job Date** 09-26-2021



# Cementing Service Report

				Customer OXY				Job Number EAJ7-02550			
Well Shake 11-3HZ			Location (legal)			Schlumberger Location			Job Start Sep/26/2021		
Field DJ		Formation Name/Type Shale		Deviation deg		Bit Size in		Well MD ft		Well TVD ft	
County Weld		State/Province Colorado		BHP psi		BHST degF		BHCT degF		Pore Press. Gradient lb/gal	
Well Master 0066209427		API/UWI 051235141900									
Rig Name P461		Drilled For Oil		Service Via Land		Casing/ Liner					
						Depth, ft		Size, in		Weight, lb/ft	
										Grade	
										Thread	
Offshore Zone		Well Class New		Well Type Development		1900.0		9.6		36.0	
						17701.0		5.5		17.0	
Drilling Fluid Type		Max. Density lb/gal		Plastic Viscosity cP		Tubing/Drill Pipe					
						T/D		Depth, ft		Size, in	
										Weight, lb/ft	
										Grade	
										Thread	
Service Line Cementing		Job Type Production									
Max. Allowed Tub. Press psi		Max. Allowed Ann. Press psi		WH Connection Double Cement head		Perforations/Open Hole					
						Top, ft		Bottom, ft		shot/ft	
										No. of Shots	
										Total Interval ft	
										Diameter in	
						Treat Down Casing		Displacement 411.0 bbl		Packer Type	
										Packer Depth ft	
						Tubing Vol. bbl		Casing Vol. bbl		Annular Vol. bbl	
										Openhole Vol. bbl	
Casing/Tubing Secured <input checked="" type="checkbox"/>		1 Hole Vol. Circulated prior to Cement <input checked="" type="checkbox"/>				Casing Tools				Squeeze Job	
Lift Pressure psi						Shoe Type Float				Squeeze Type	
Pipe Rotated <input type="checkbox"/>		Pipe Reciprocated <input type="checkbox"/>				Shoe Depth 17701.0 ft				Tool Type	
No. Centralizers		Top Plugs 1		Bottom Plugs 1		Stage Tool Type				Tool Depth ft	
Cement Head Type Double						Stage Tool Depth ft				Tail Pipe Size in	
Job Scheduled For Sep/26/2021		Arrived on Location Sep/26/2021		Leave Location Sep/26/2021		Collar Type Float				Tail Pipe Depth ft	
						Collar Depth 17695.0 ft				Sqz. Total Vol. bbl	
Date	Time 24-hr clock	Treating Pressure PSI	Flow Rate B/M	Density LB/G	Volume BBL	Message					
09/26/2021	14:40:47	3	0.0	8.35	0.0	Started Acquisition					
09/26/2021	14:40:50	3	0.0	8.35	0.0	Rig Up					
09/26/2021	14:40:55	8	0.0	8.35	0.0	Start Job					
09/26/2021	14:40:57	9	0.0	8.35	0.0	Flush Lines					
09/26/2021	14:45:47	470	0.1	8.38	5.3						
09/26/2021	14:46:00	381	0.0	8.38	5.3	Pressure Test Lines					
09/26/2021	14:50:47	6851	0.0	8.38	5.3						
09/26/2021	14:55:47	340	0.0	8.38	5.3						
09/26/2021	14:58:00	346	0.0	8.38	5.3	Start Pumping Spacer					
09/26/2021	15:00:19	714	3.3	10.30	13.5	Pump 80 bbls CemPRIME MP					
09/26/2021	15:00:47	606	2.2	10.31	14.7						
09/26/2021	15:05:47	619	2.2	10.15	27.8						
09/26/2021	15:10:47	603	2.2	10.44	40.3						
09/26/2021	15:15:47	958	6.4	10.60	66.6						
09/26/2021	15:20:47	202	0.0	11.18	86.4						
09/26/2021	15:25:47	199	0.0	10.51	86.4						
09/26/2021	15:29:14	903	4.5	11.72	98.6	End Spacer					
09/26/2021	15:29:15	881	4.5	11.72	98.7	Drop Bottom Plug					
09/26/2021	15:29:17	892	4.5	11.72	98.9	Start Cement Slurry					
09/26/2021	15:29:24	887	4.5	11.74	99.4	Start Mixing Lead Slurry					
09/26/2021	15:29:26	909	4.5	11.74	99.5	Pump 208 bbls Of 12.0 ppg Lead					

Well			Field	Job Start		Customer	Job Number
Shake 11-3HZ			DJ	Sep/26/2021		OXY	EAJ7-02550
Date	Time 24-hr clock	Treating Pressure PSI	Flow Rate B/M	Density LB/G	Volume BBL	Message	
09/26/2021	15:29:28	883	4.5	11.74	99.7	Good Returns	
09/26/2021	15:30:47	1266	6.3	11.86	106.3		
09/26/2021	15:35:47	1597	7.7	11.97	145.0		
09/26/2021	15:40:47	1037	6.4	11.94	183.4		
09/26/2021	15:45:47	1266	7.8	11.92	219.0		
09/26/2021	15:50:47	1266	7.8	11.94	254.9		
09/26/2021	15:55:47	785	6.3	11.92	292.6		
09/26/2021	15:57:37	-2	0.0	14.01	302.3	End Lead Slurry	
09/26/2021	16:00:47	6	0.0	13.99	302.3		
09/26/2021	16:05:47	260	4.4	12.52	304.1		
09/26/2021	16:07:42	283	4.4	13.14	312.5	Start Mixing Tail Slurry	
09/26/2021	16:07:45	301	4.5	13.14	312.7	Pump 279 bbls Of 13.5 ppg	
09/26/2021	16:10:47	314	4.5	13.36	327.8		
09/26/2021	16:15:00	284	4.6	13.26	346.8	Had Some Delivery Issues	
09/26/2021	16:15:01	287	4.6	13.25	346.9	Down 4 min.	
09/26/2021	16:15:47	11	0.0	13.45	348.1		
09/26/2021	16:20:47	305	4.5	13.33	352.9		
09/26/2021	16:25:47	518	6.4	13.41	380.2		
09/26/2021	16:30:47	543	6.4	13.47	412.3		
09/26/2021	16:35:47	983	8.3	13.50	449.5		
09/26/2021	16:40:47	539	6.4	13.37	480.6		
09/26/2021	16:45:47	627	6.4	13.48	512.8		
09/26/2021	16:50:47	1286	8.3	13.48	548.0		
09/26/2021	16:55:00	736	6.4	13.47	578.8	End Tail Slurry	
09/26/2021	16:55:47	716	6.4	13.47	583.9		
09/26/2021	17:00:47	15	0.1	13.64	585.9		
09/26/2021	17:02:00	38	0.0	11.70	586.0	Shut Down	
09/26/2021	17:05:47	78	2.3	8.96	594.1		
09/26/2021	17:10:47	239	4.2	8.39	605.0		
09/26/2021	17:14:00	11	0.0	8.31	608.3	Drop Top Plug	
09/26/2021	17:15:47	86	4.6	8.41	613.9		
09/26/2021	17:20:47	1399	8.2	8.39	646.2		
09/26/2021	17:24:10	1566	8.2	8.39	674.1	Start Displacement	
09/26/2021	17:24:11	1567	8.2	8.39	674.2	Displace 411 bbls H2O	
09/26/2021	17:25:47	1681	8.2	8.39	687.3		
09/26/2021	17:30:47	2074	8.2	8.39	728.3		
09/26/2021	17:35:47	2521	8.1	8.39	768.9		
09/26/2021	17:40:47	2705	8.1	8.39	809.5		
09/26/2021	17:45:47	2817	8.1	8.39	850.1		
09/26/2021	17:50:47	2495	6.3	8.39	888.4		
09/26/2021	17:55:47	2609	6.3	8.38	919.8		
09/26/2021	18:00:47	2748	6.3	8.39	951.1		
09/26/2021	18:05:47	2878	6.3	8.38	982.5		
09/26/2021	18:10:47	2417	3.3	8.39	1011.6		
09/26/2021	18:14:44	3082	3.2	8.39	1024.4	End Displacement	
09/26/2021	18:14:46	2956	1.9	8.38	1024.5	Bump Top Plug 3000 psi	
09/26/2021	18:14:48	2985	0.8	8.39	1024.5	Final Circulating Psi 2350	
09/26/2021	18:15:47	2991	0.0	8.39	1024.6		
09/26/2021	18:20:47	3103	0.0	8.39	1024.6		
09/26/2021	18:25:47	3192	0.0	8.39	1024.6		
09/26/2021	18:30:47	3274	0.0	8.39	1024.6		
09/26/2021	18:31:00	3277	0.0	8.39	1024.6	Psi Up 4784	
09/26/2021	18:33:00	2274	2.2	8.39	1028.3	Floats Held	
09/26/2021	18:35:47	1	0.0	8.39	1029.8		

Well Shake 11-3HZ			Field DJ		Job Start Sep/26/2021	Customer OXY		Job Number EAJ7-02550	
Date	Time 24-hr clock	Treating Pressure PSI	Flow Rate B/M	Density LB/G	Volume BBL	Message			
09/26/2021	18:45:47	6	0.0	8.38	1029.9				
09/26/2021	18:50:47	7	0.0	0.04	1030.7				
09/26/2021	18:55:47	31	0.0	0.03	1030.7				
09/26/2021	19:00:47	32	0.0	0.03	1030.7				

### Post Job Summary

Average Pump Rates, bbl/min					Volume of Fluid Injected, bbl					
Slurry 5.5	N2	Mud	Maximum Rate 8.7	Total Slurry 487.0	Mud 0.0	Spacer 80.0	N2			
Treating Pressure Summary, psi					Breakdown Fluid					
Maximum 6860	Final 7	Average 1173	Bump Plug to	Breakdown	Type	Volume bbl	Density lb/gal			
Avg. N2 Percent %	Designed Slurry Volume 487.0 bbl		Displacement 411.0 bbl	Mix Water Temp 65 degF	Cement Circulated to Surface? <input type="checkbox"/>	Volume bbl				
					Washed Thru Perfs <input type="checkbox"/>	To ft				
Customer or Authorized Representative Joe Wallen			Schlumberger Supervisor Justin Zika			Circulation Lost <input type="checkbox"/>	Job Completed <input type="checkbox"/>			
						-	-			