

Inspection Photos
Operator: Simcoe
API: 067-09958
Date: 11/30/2021



Photo 1. View of the project area from the southeastern corner facing center.



Photo 2. View of the southern fill slope, from the southeastern corner facing westward. Revegetation is progressing with western wheatgrass, crested wheatgrass, smooth brome, and sand dropseed.



Photo 5. View of the eastern project area from the southeastern corner facing northward.

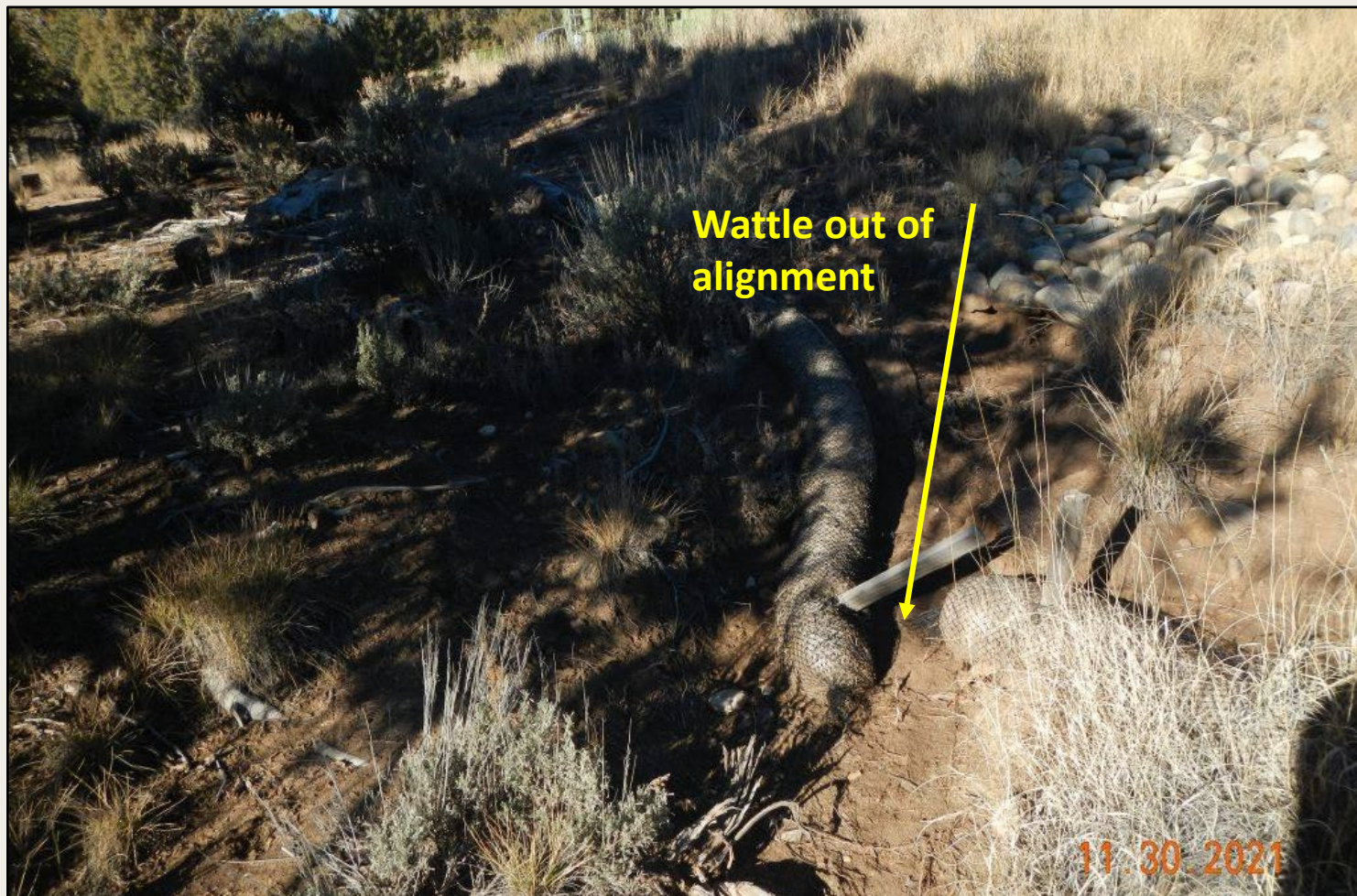


Photo 5. View of area within the southeastern project area, where wattle is out of alignment and erosion is occurring down-slope.



Photo 5. View of erosional scouring and erosion on the access road where stormwater flows are improperly diverted. Approximately 4-6 inches deep of material is eroded off of the road and down-slope.



Photo 6. View of area down-slope of erosion on road observed in Photo 5. Stormwater flows have resulted in erosion and gravel deposition.



Photo 7. View of erosion occurring at culvert outlet along access road, approximately 3 feet deep, where concentrated stormwater flows out of culvert and eroding soil and vegetation. Erosion observed around culvert indicates that it is not stabilized.



Gravel and
cobble from
access road



Photo 8. View of area approx. 50 ft down-slope of culvert outlet, where significant volumes (approx. 75ft long, 4-6 ft wide, and 4-6 inches deep) observed within the streambed.



Photo 9. View of reference area comprised of pinyon and juniper woodland with understory of western wheatgrass, Indian ricegrass, black sage, prickly pear, and purple threeawn.