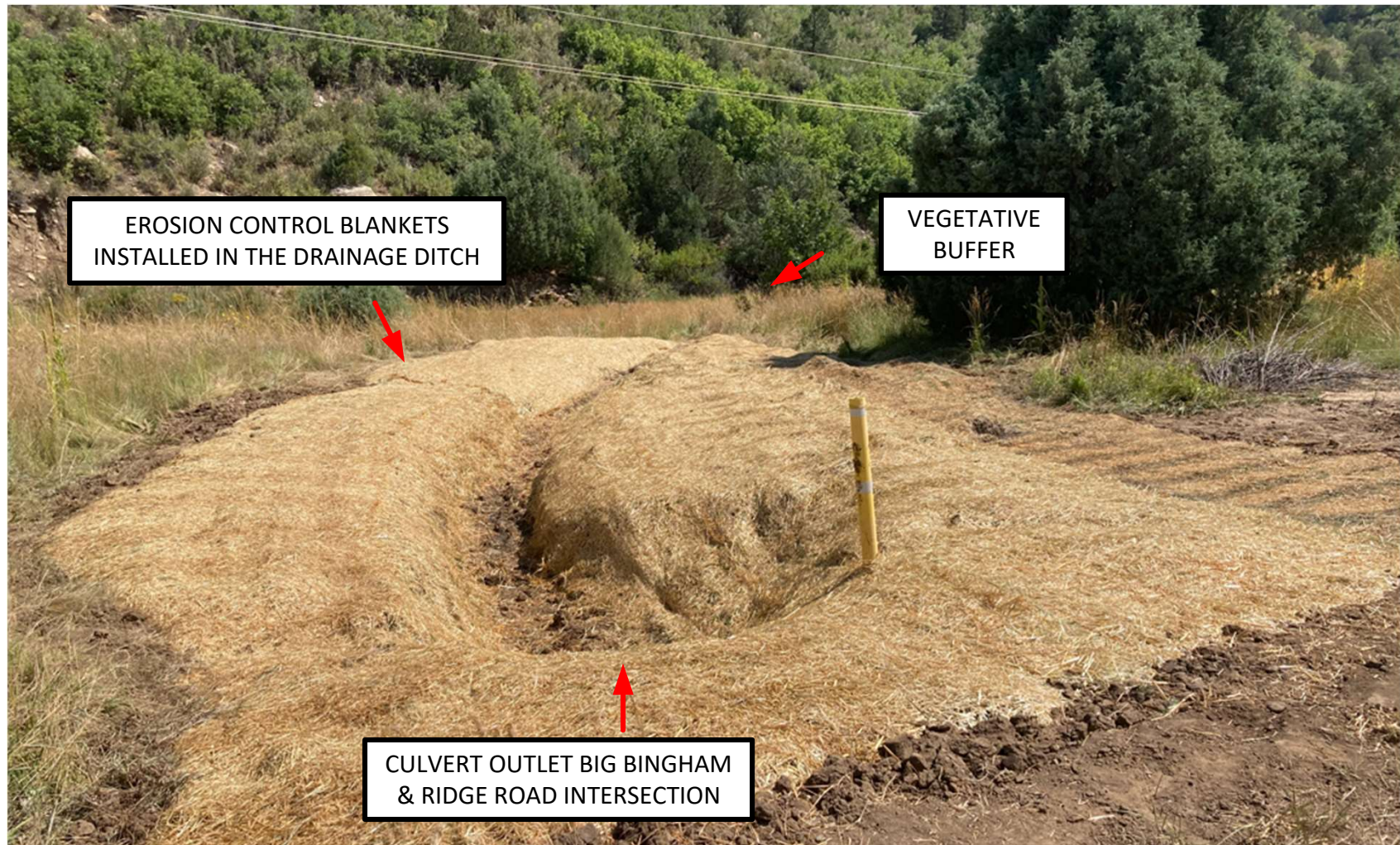


APACHE CANYON 12-14 API# 05-071-06128 – OGRIS OPERATING LLC - OGCC OPERATOR NUMBER 10758.

INSTALLATION DATE: SEPTEMBER 13, 2021. THE CORRECTIVE ACTIONS ARE COMPLETED TO IMPLEMENT AND MAINTAIN BMP'S PER FIELD INSPECTION REPORTS: DOCUMENT # 690200709, DOCUMENT # 690200848, DOCUMENT # 690201265, DOCUMENT # 690201545, DOCUMENT # 690201813.



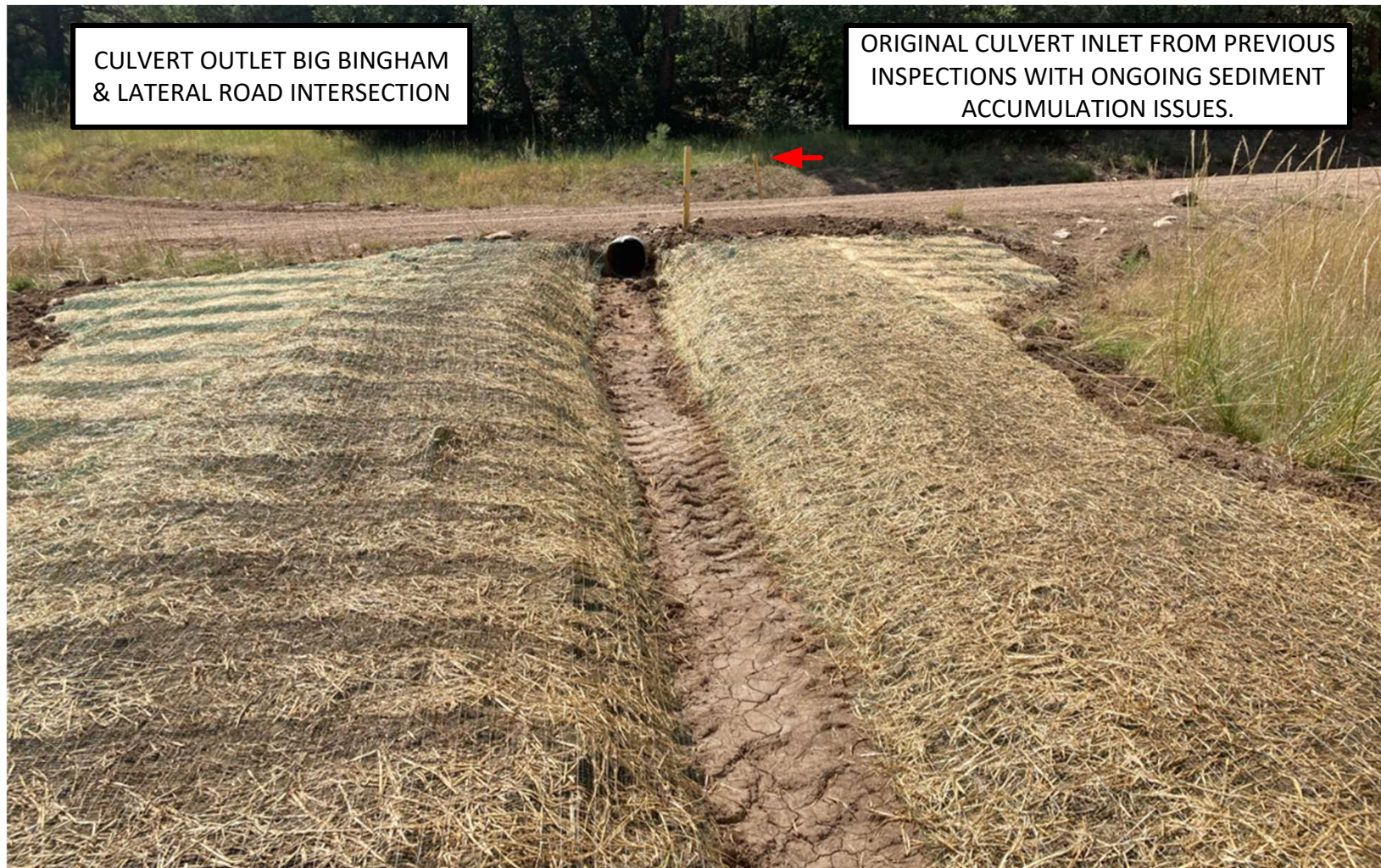
THE CULVERT OUTLET ON THE MAIN LEASE ROAD OF BIG BINGHAM CANYON AND THE RIDGE ROAD INTERSECTION WAS BELOW GRADE AND WOULD NOT DRAIN PROPERLY. POSITIVE DRAINAGE WAS ESTABLISHED FOR THE OUTLET. THE DISTURBED SOIL WAS SEEDED WITH AN APPROVED CPW SEED MIX TO ESTABLISH VEGETATION. EROSION CONTROL BLANKETS WERE INSTALLED FOR TEMPORARY SOIL STABILIZATION.

APACHE CANYON 12-14 API# 05-071-06128 – OGRIS OPERATING LLC - OGCC OPERATOR NUMBER 10758.
MAINTENANCE DATE: SEPTEMBER 13, 2021. THE CORRECTIVE ACTIONS ARE COMPLETE TO IMPLEMENT AND MAINTAIN
BMP'S PER FIELD INSPECTION REPORTS: DOCUMENT # 690200709, DOCUMENT # 690200848, DOCUMENT # 690201265,
DOCUMENT # 690201545, DOCUMENT # 690201813.



THE ROAD SURFACE WAS REGRADED TO CREATE SHEET FLOW AND ELIMINATE THE SURFACE EROSION. THE DIRT BERM/ DIVERSION DITCH WAS DOMINATED TO DIRECT RUN OFF FROM THE UPGRADIENT LATERAL ROAD TO THE CULVERT INLET ON THE MAIN ROAD. THE SEDIMENT ACCUMULATION WAS REMOVED FROM THE CULVERT INLET AND POSITIVE DRAINAGE WAS ESTABLISHED FOR THE CULVERT OUTLET.

APACHE CANYON 12-14 API# 05-071-06128 – OGRIS OPERATING LLC - OGCC OPERATOR NUMBER 10758.
INSTALLATION DATE: SEPTEMBER 13, 2021. THE CORRECTIVE ACTIONS ARE COMPLETE TO IMPLEMENT AND MAINTAIN
BMP'S PER FIELD INSPECTION REPORTS: DOCUMENT # 690200709, DOCUMENT # 690200848, DOCUMENT # 690201265,
DOCUMENT # 690201545, DOCUMENT # 690201813.



THE CULVERT OUTLET ON THE MAIN LEASE ROAD WAS BELOW GRADE AND WOULD NOT DRAIN PROPERLY. DRAINAGE WAS ESTABLISHED FOR THE OUTLET AND THE DISTURBED SOIL WAS SEEDED USING THE CPW APPROVED SEED MIX TO PROMOTE THE ESTABLISHMENT OF VEGETATION. EROSION CONTROL BLANKETS WERE INSTALLED FOR TEMPORARY SOIL STABILIZATION.

APACHE CANYON 12-14 API# 05-071-06128 – OGRIS OPERATING LLC - OGCC OPERATOR NUMBER 10758.
MAINTENANCE DATE: SEPTEMBER 22, 2021. THE CORRECTIVE ACTIONS ARE COMPLETE TO IMPLEMENT AND MAINTAIN
BMP'S PER FIELD INSPECTION REPORTS: DOCUMENT # 690200709, DOCUMENT # 690200848, DOCUMENT # 690201265,
DOCUMENT # 690201545, DOCUMENT # 690201813.



THE ROAD SURFACE WAS CROWNED TO CREATE SHEET FLOW AND ELIMINATE THE TIRE RUTS. ADDITIONAL ROAD
BASE/GRAVEL WAS INSTALLED TO THE ROADWAY SURFACE TO PROVIDE ADDED STABILIZATION.

APACHE CANYON 12-14 API# 05-071-06128 – OGRIS OPERATING LLC - OGCC OPERATOR NUMBER 10758.
MAINTENANCE DATE: SEPTEMBER 13, 2021. THE CORRECTIVE ACTIONS ARE COMPLETE TO IMPLEMENT AND MAINTAIN BMP'S
PER FIELD INSPECTION REPORTS: DOCUMENT # 690200709, DOCUMENT # 690200848, DOCUMENT # 690201265, DOCUMENT #
690201545, DOCUMENT # 690201813.



THE SEDIMENT ACCUMULATION IN THE CULVERT INLETS ALONG BIG BINGHAM CANYON WERE REMOVED.

APACHE CANYON 12-14 API# 05-071-06128 – OGRIS OPERATING LLC - OGCC OPERATOR NUMBER 10758.
IMPLEMENTATION DATE: SEPTEMBER 27, 2021. THE CORRECTIVE ACTIONS ARE COMPLETE TO IMPLEMENT
AND MAINTAIN BMP'S PER FIELD INSPECTION REPORTS: DOCUMENT # 690200709, DOCUMENT # 690200848,
DOCUMENT # 690201265, DOCUMENT # 690201545, DOCUMENT # 690201813.



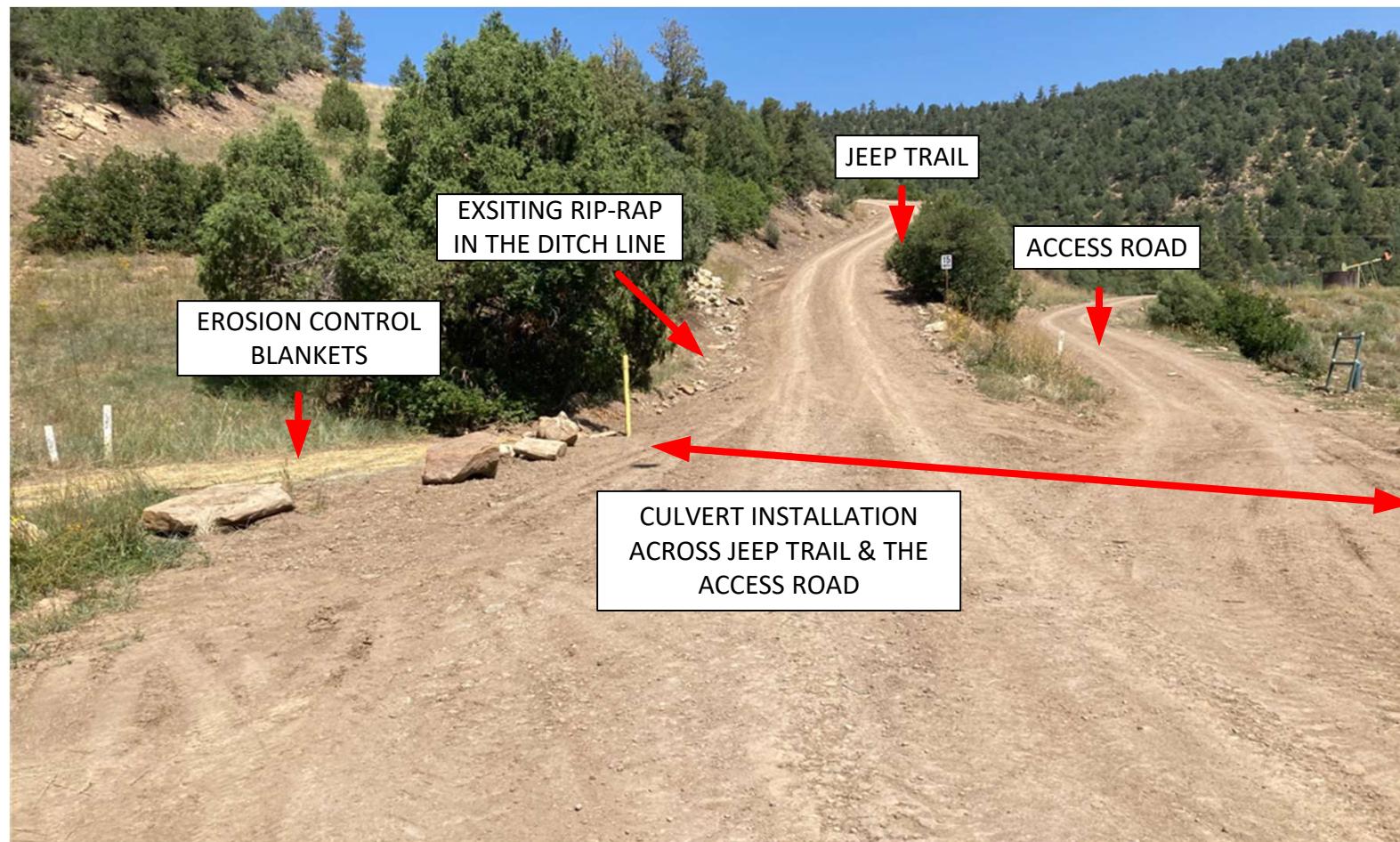
THE ROAD SURFACE WAS CROWNED TO CREATE SHEET FLOW AND ELIMINATE THE TIRE RUTS. ADDITIONAL ROAD BASE/GRAVEL WAS INSTALLED TO THE ROADWAY SURFACE TO PROVIDE STABILIZATION. A COMPACTION ROLLER WAS USED DURING THE INSTALLATION TO COMPACTED THE ROAD BASE.

APACHE CANYON 12-14 API# 05-071-06128 – OGRIS OPERATING LLC - OGCC OPERATOR NUMBER 10758.
IMPLEMENTATION DATE: SEPTEMBER 27, 2021. THE CORRECTIVE ACTIONS ARE COMPLETE TO IMPLEMENT AND
MAINTAIN BMP'S PER FIELD INSPECTION REPORTS: DOCUMENT # 690200709, DOCUMENT # 690200848, DOCUMENT
690201265, DOCUMENT # 690201545, DOCUMENT # 690201813.



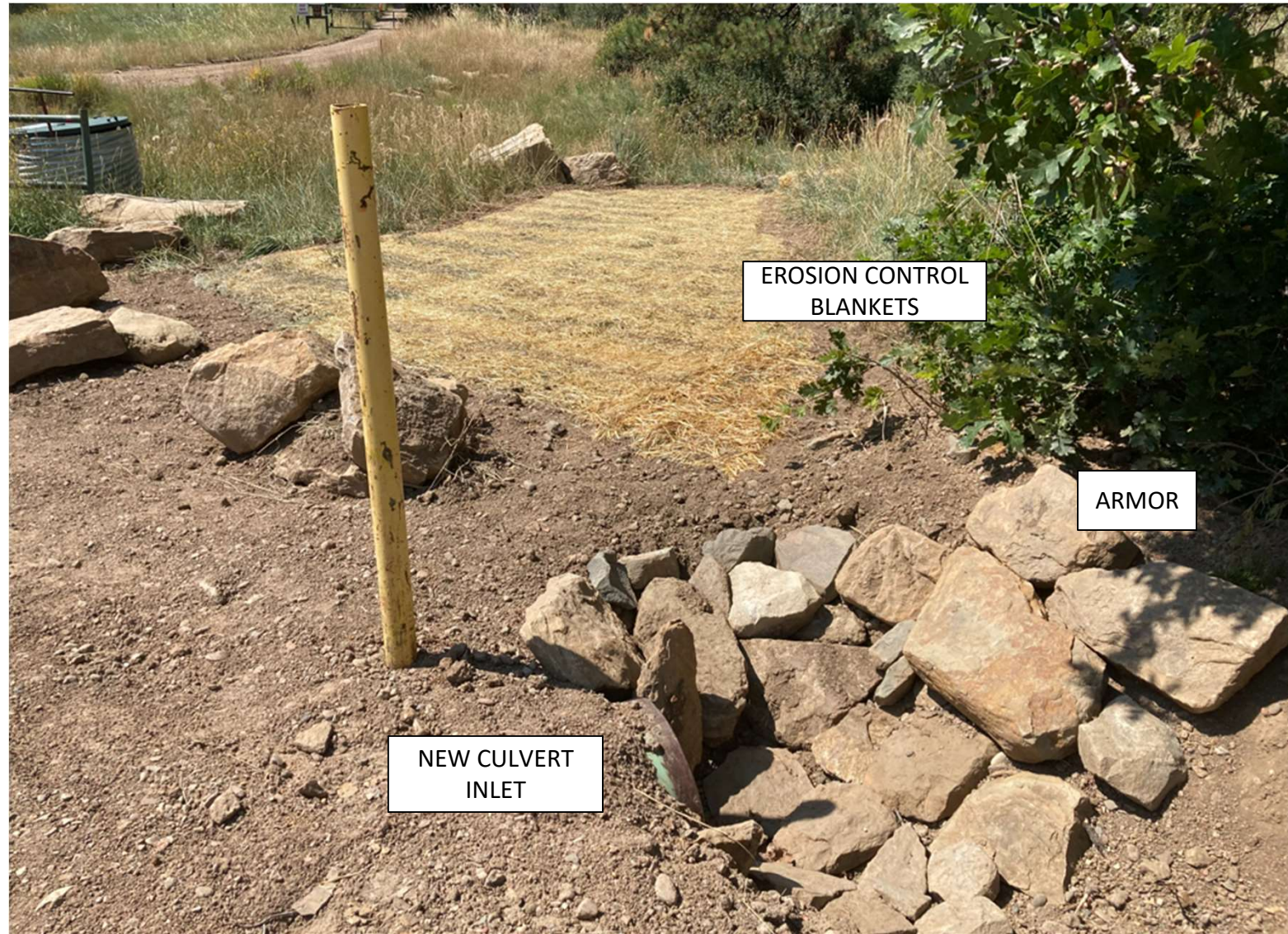
THE ROAD SURFACE WAS CROWNED TO CREATE SHEET FLOW AND ELIMINATE THE TIRE RUTS. ADDITIONAL ROAD BASE/
GRAVEL WAS INSTALLED TO THE ROADWAY SURFACE TO PROVIDE ADDED STABILIZATION. A COMPACTION ROLLER WAS
USED DURING THE INSTALLATION TO COMPACTED THE ROAD BASE.

APACHE CANYON 12-14 API# 05-071-06128 – OGRIS OPERATING LLC - OGCC OPERATOR NUMBER 10758.
INSTALLATION DATE: SEPTEMBER 08, 2021. THE CORRECTIVE ACTIONS ARE COMPLETE TO IMPLEMENT AND MAINTAIN BMP'S PER FIELD INSPECTION REPORTS: DOCUMENT # 690200709, DOCUMENT # 690200848, DOCUMENT # 690201265, DOCUMENT # 690201545, DOCUMENT # 690201813.



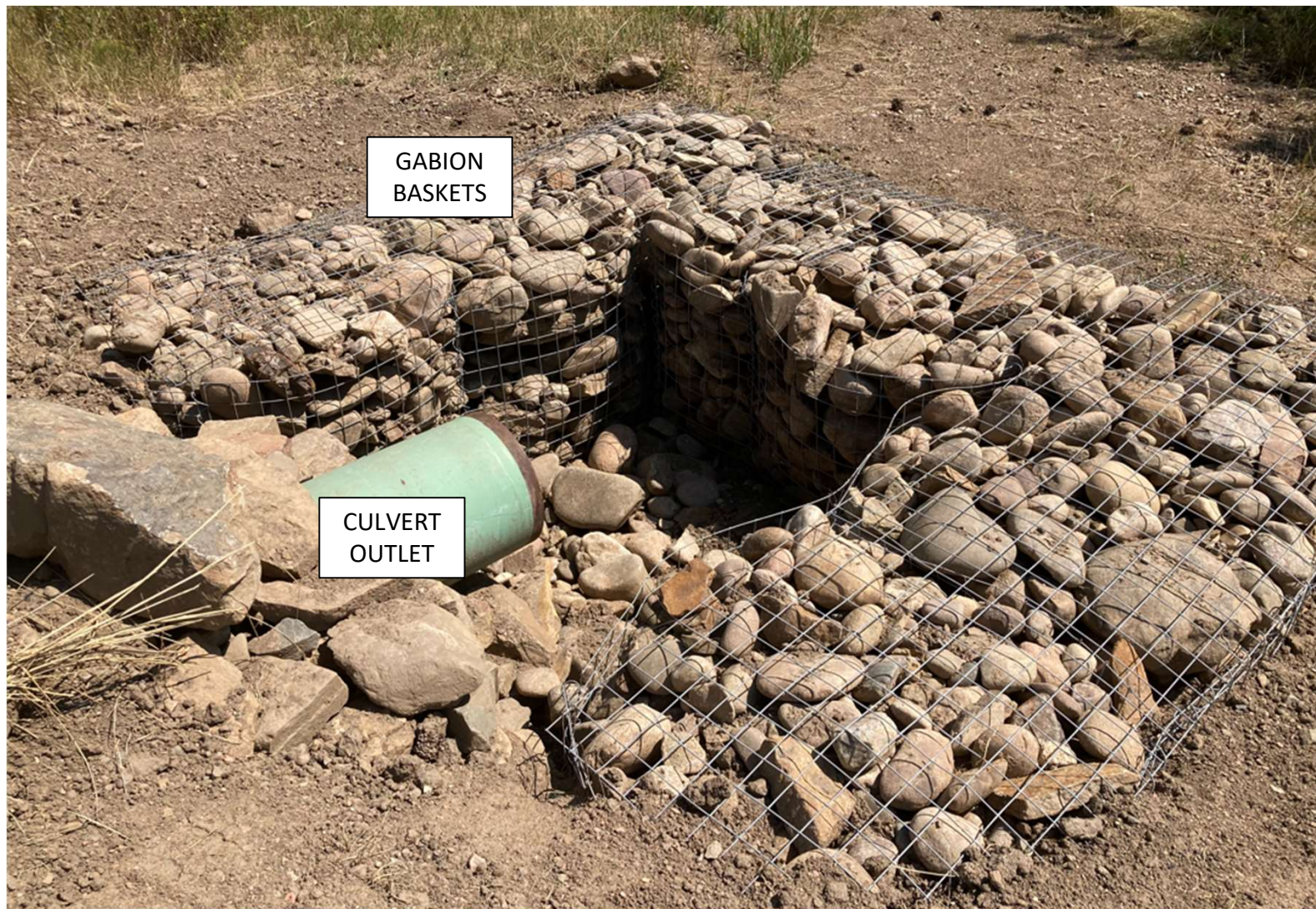
A CULVERT WAS INSTALLED AT THE BOTTOM OF JEEP TRAIL AND CROSSED THE ACCESS ROAD TO APACHE CANYON 12-16. THE FACE OF THE BELL HOLE ON THE CULVERT INLET WAS ARMORED TO ABSORB ENERGY AND PREVENT SCOURING. THE EXISTING WATER CALL OUT WAS RECLAIMED AND THE DISTURBED SOIL WAS SEEDED WITH AN APPROVED CPW SEED MIX. EROSION CONTROL BLANKETS WERE INSTALLED IN THIS AREA FOR TEMPORARY SOIL STABILIZATION. THE EXISTING RIP-RAP IN THE DITCH LINE PROVIDES SOIL STABILIZATION AND EROSION CONTROL. A GABION BASKET WAS INSTALLED ON THE NEW CULVERT OUTLET FOR SEDIMENT CONTROL.

APACHE CANYON 12-14 API# 05-071-06128 – OGRIS OPERATING LLC - OGCC OPERATOR NUMBER 10758.
INSTALLATION DATE: SEPTEMBER 10, 2021. THE CORRECTIVE ACTIONS ARE COMPLETE TO IMPLEMENT AND MAINTAIN
BMP'S PER FIELD INSPECTION REPORTS: DOCUMENT # 690200709, DOCUMENT # 690200848, DOCUMENT # 690201265,
DOCUMENT # 690201545, DOCUMENT # 690201813.



THE CULVERT INLET AT THE BOTTOM OF JEEP TRAIL WAS ARMORED TO ABSORB ENERGY. THE WATER CALL OUT ON THE WEST SIDE OF JEEP TRAIL WAS REMOVED AND RECLAIMED. THE SEDIMENT ACCUMULATION THAT WAS PRESENT, WAS REMOVED. RUN OFF IS NOW DIRECTED TO THE EAST SIDE OF JEEP TRAIL FOR IMPROVED SEDIMENT CONTROL.

APACHE CANYON 12-14 API# 05-071-06128 – OGRIS OPERATING LLC - OGCC OPERATOR NUMBER 10758.
INSTALLATION DATE: SEPTEMBER 10, 2021. THE CORRECTIVE ACTIONS ARE COMPLETE TO IMPLEMENT AND MAINTAIN
BMP'S PER FIELD INSPECTION REPORTS: DOCUMENT # 690200709, DOCUMENT # 690200848, DOCUMENT # 690201265,
DOCUMENT # 690201545, DOCUMENT # 690201813.



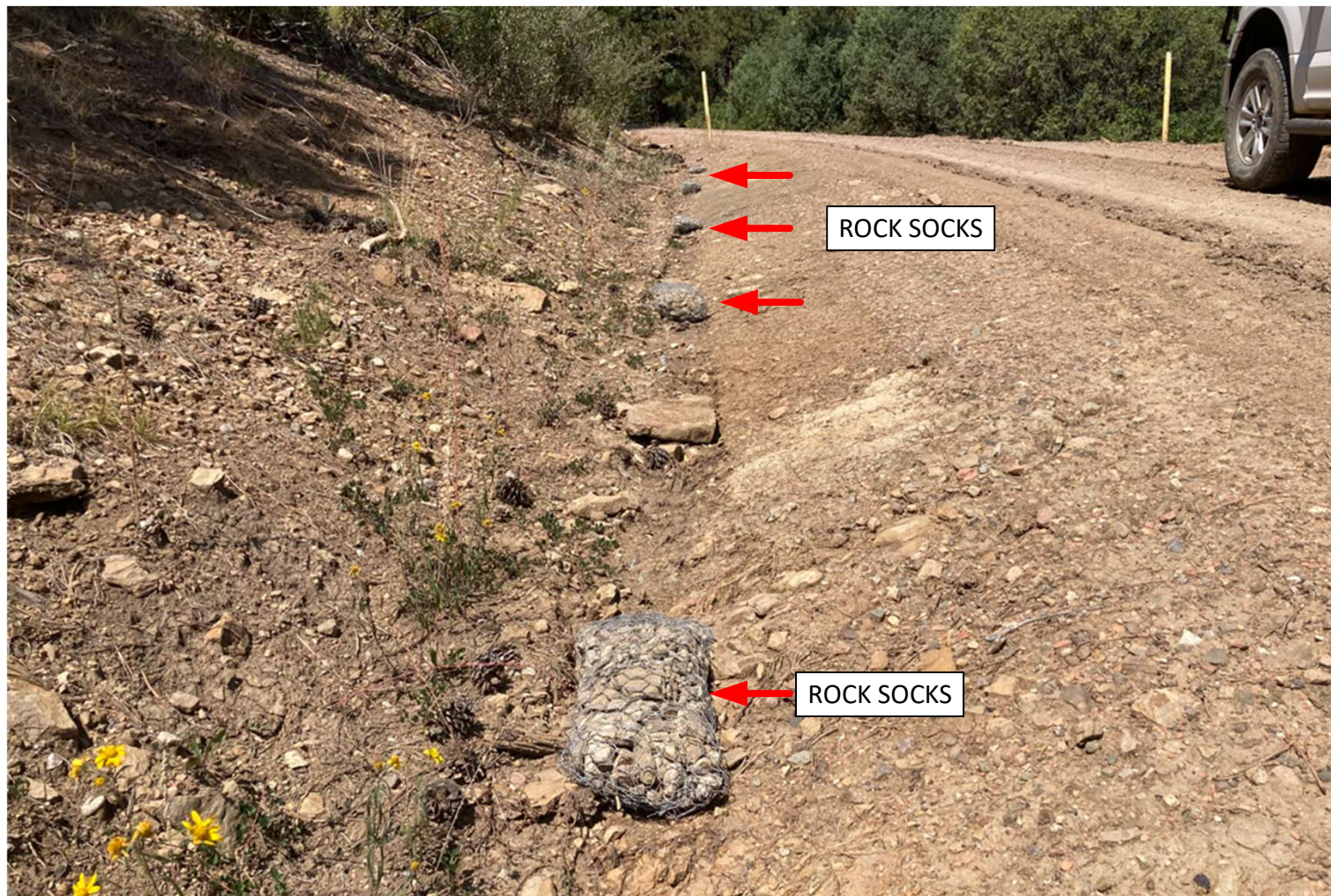
GABION BASKETS WERE INSTALLED ON THE NEW CULVERT OUTLET AT THE BOTTOM OF JEEP TRAIL. STORMWATER IS DIVERTED TO THE BASKETS WHERE RUN OFF HAS TIME FOR THE SEDIMENT TO DROP OUT AND FILTER THROUGH THE ROCK. THIS PROVIDES PERIMETER SEDIMENT CONTROL FROM THE JEEP TRAIL LEASE ROAD.

APACHE CANYON 12-14 API# 05-071-06128 – OGRIS OPERATING LLC - OGCC OPERATOR NUMBER 10758.
INSTALLATION DATE: SEPTEMBER 18, 2021. THE CORRECTIVE ACTIONS ARE COMPLETE TO IMPLEMENT AND MAINTAIN
BMP'S PER FIELD INSPECTION REPORTS: DOCUMENT # 690200709, DOCUMENT # 690200848, DOCUMENT # 690201265,
DOCUMENT # 690201545, DOCUMENT # 690201813.



THE EXISTING RIP RAP IN THE BAR DITCH PROVIDES SOIL STABILIZATION AND EROSION CONTROL IN THE BAR DITCH.

APACHE CANYON 12-14 API# 05-071-06128 – OGRIS OPERATING LLC - OGCC OPERATOR NUMBER 10758.
INSTALLATION DATE: SEPTEMBER 13, 2021. THE CORRECTIVE ACTIONS ARE COMPLETE TO IMPLEMENT AND MAINTAIN
BMP'S PER FIELD INSPECTION REPORTS: DOCUMENT # 690200709, DOCUMENT # 690200848, DOCUMENT # 690201265,
DOCUMENT # 690201545, DOCUMENT # 690201813.



ROCK SOCKS WERE PLACED IN THE BAR DITCH TO FILTER STORMWATER FLOWING IN THE DITCH LINE. THIS PORTION OF THE LEASE ROAD IS NARROW. WHEN TRAFFIC IS ENCOUNTERED TRAVELING UP THE TRAIL, VEHICLES TRAVELING DOWN THE TRAIL WILL PULL OVER INTO THE BAR DITCH FOR SAFE PASSAGE. ROCK CHECK DAMS (SUGGEST BY FIELD INSPECTOR) WOULD BE DAMAGED EACH TIME THIS OCCURS. THE ROCK SOCKS ARE CONTAINED GRAVEL WRAPED IN WIRE THAT CAN REMAIN AN EFFECTIVE SEDIMENT CONTROL WHEN TRAVELED ON.

APACHE CANYON 12-14 API# 05-071-06128 – OGRIS OPERATING LLC - OGCC OPERATOR NUMBER 10758.
INSTALLATION DATE: SEPTEMBER 13, 2021. THE CORRECTIVE ACTIONS ARE COMPLETE TO IMPLEMENT AND MAINTAIN
BMP'S PER FIELD INSPECTION REPORTS: DOCUMENT # 690200709, DOCUMENT # 690200848, DOCUMENT # 690201265,
DOCUMENT # 690201545, DOCUMENT # 690201813.



ROCK CHECK DAMS WERE PLACED IN THE BAR DITCH UP GRADIENT OF THE CULVERT INLET TO ABSORB ENERGY AND PROVIDE SEDIMENT FILTRATION FROM RUN OFF. THE ROAD SURFACE WAS CROWNED TO CREATE SHEET FLOW AND ELIMINATE THE TIRE RUTS. ADDITIONAL ROAD BASE WAS INSTALLED TO THE ROAD SURFACE TO PROVIDE ADDED STABILIZATION.

APACHE CANYON 12-14 API# 05-071-06128 – OGRIS OPERATING LLC - OGCC OPERATOR NUMBER 10758.
INSTALLATION DATE: SEPTEMBER 18, 2021. THE CORRECTIVE ACTIONS ARE COMPLETE TO IMPLEMENT AND MAINTAIN
BMP'S PER FIELD INSPECTION REPORTS: DOCUMENT # 690200709, DOCUMENT # 690200848, DOCUMENT # 690201265,
DOCUMENT # 690201545, DOCUMENT # 690201813.



THE ROAD SURFACE WAS CROWNED TO CREATE SHEET FLOW AND ELIMINATE THE TIRE RUTS. ADDITIONAL ROAD
BASE/GRAVEL WAS INSTALLED TO THE ROADWAY SURFACE TO PROVIDE ADDED STABILIZATION.

APACHE CANYON 12-14 API# 05-071-06128 – OGRIS OPERATING LLC - OGCC OPERATOR NUMBER 10758.
INSTALLATION DATE: SEPTEMBER 18, 2021. THE CORRECTIVE ACTIONS ARE COMPLETE TO IMPLEMENT AND MAINTAIN
BMP'S PER FIELD INSPECTION REPORTS: DOCUMENT # 690200709, DOCUMENT # 690200848, DOCUMENT # 690201265,
DOCUMENT # 690201545, DOCUMENT # 690201813.



WATER CALLOUTS WERE INSTALLED TO MOVE STORMWATER AWAY FROM THE LEASE ROAD. THE ROAD SURFACE WAS CROWNED TO CREATE SHEET FLOW AND ELIMINATE THE TIRE RUTS. ADDITIONAL ROAD BASE/GRAVEL WAS INSTALLED TO THE ROADWAY SURFACE TO PROVIDE ADDED STABILIZATION.

APACHE CANYON 12-14 API# 05-071-06128 – OGRIS OPERATING LLC - OGCC OPERATOR NUMBER 10758.
MAINTENANCE DATE: SEPTEMBER 08, 2021. THE CORRECTIVE ACTIONS ARE COMPLETE TO IMPLEMENT AND MAINTAIN
BMP'S PER FIELD INSPECTION REPORTS: DOCUMENT # 690200709, DOCUMENT # 690200848, DOCUMENT # 690201265,
DOCUMENT # 690201545, DOCUMENT # 690201813.



SEDIMENT WAS REMOVED FROM CULVERTS ALONG JEEP TRAIL TO MAINTAIN FLOW.

APACHE CANYON 12-14 API# 05-071-06128 – OGRIS OPERATING LLC - OGCC OPERATOR NUMBER 10758.
INSTALLATION DATE: SEPTEMBER 06, 2021. THE CORRECTIVE ACTIONS ARE COMPLETE TO IMPLEMENT AND MAINTAIN
BMP'S PER FIELD INSPECTION REPORTS: DOCUMENT # 690200709, DOCUMENT # 690200848, DOCUMENT # 690201265,
DOCUMENT # 690201545, DOCUMENT # 690201813.



RUN OFF WAS RE-DIRECTED AWAY FROM THIS AREA. THE EROSION RILL WAS BACKFILLED. THE DISTURBED SOIL WAS SEEDED BY HAND BROADCAST WITH AN APPROVED CPW SEED MIX TO ESTABLISH VEGETATION. EROSION CONTROL BLANKETS WERE INSTALLED FOR SOIL STABILIZATION AND EROSION CONTROL.

APACHE CANYON 12-14 API# 05-071-06128 – OGRIS OPERATING LLC - OGCC OPERATOR NUMBER 10758.
MAINTENANCE DATE: SEPTEMBER 08, 2021. THE CORRECTIVE ACTIONS ARE COMPLETE TO IMPLEMENT AND MAINTAIN
BMP'S PER FIELD INSPECTION REPORTS: DOCUMENT # 690200709, DOCUMENT # 690200848, DOCUMENT # 690201265,
DOCUMENT # 690201545, DOCUMENT # 690201813.



THE BLUE PIPE FRAGMENTS WERE PICKED UP AND DISPOSED OF. THE EXISTING WATER CALLOUT WAS DOMINATED TO PROVIDE POSITIVE FLOW OF STORMWATER OFF OF THE LEASE ROAD. THE FLOW FROM THE WATER TURNOUT INTERCEPTS RIP RAP FOR EROSION CONTROL DURING DISCHARGE. THE ROAD SURFACE WAS CROWNED TO CREATE SHEET FLOW AND ELIMINATE THE TIRE RUTS. ADDITIONAL ROAD BASE/GRAVEL WAS INSTALLED TO THE ROADWAY SURFACE TO PROVIDE ADDED STABILIZATION.

APACHE CANYON 12-14 API# 05-071-06128 – OGRIS OPERATING LLC - OGCC OPERATOR NUMBER 10758.
INSTALLATION DATE: SEPTEMBER 18, 2021. THE CORRECTIVE ACTIONS ARE COMPLETE TO IMPLEMENT AND MAINTAIN
BMP'S PER FIELD INSPECTION REPORTS: DOCUMENT # 690200709, DOCUMENT # 690200848, DOCUMENT # 690201265,
DOCUMENT # 690201545, DOCUMENT # 690201813.



ROCK CHECKS DAMS WERE PLACED IN THE BAR DITCH TO DISSIPATE ENERGY AND PROVIDE SEDIMENT FILTRATION DURING RUN OFF EVENTS.