

# COMPENSATED DENSITY/NEUTRON PE/LOG

Company MULL DRILLING CO., INC.

Well BSR A #1-19

Field WILDCAT

County LINCOLN State COLORADO

Location: API # : 05-073-06779-0000

1364' FNL & 2481' FWL

SEC 19 TWP 12S RGE 53W

Permanent Datum GROUND LEVEL Elevation 4927  
Log Measured From KELLY BUSHING 19' A.G.L.  
Drilling Measured From KELLY BUSHING

Other Services  
DIL  
ML/SON  
Elevation  
K.B. 4946  
D.F. 4944  
G.L. 4927

Date 10/17/21

Run Number ONE

Depth Driller 6950

Depth Logger 6950

Bottom Logged Interval 6930

Top Log Interval 4800

Casing Driller 8 5/8" @ 385

Casing Logger 385

Bit Size 7 7/8"

Type Fluid in Hole CHEMICAL MUD

Density / Viscosity 9.4/45

pH / Fluid Loss 10.0/8.8

Source of Sample FLOWLINE

Rm @ Meas. Temp 1.2 @ 60F

Rmf @ Meas. Temp .60 @ 60F

Rmc @ Meas. Temp .96 @ 60F

Source of Rmf / Rmc MEASURED

Rm @ BHT .50 @ 143F

Time Circulation Stopped 2 HOURS

Time Logger on Bottom 143F

Maximum Recorded Temperature 1523

Equipment Number HAYS, KANSAS

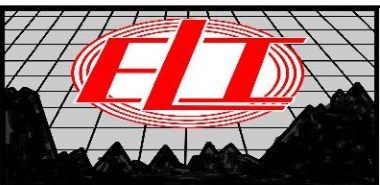
Location GUS PFANENSTIEL

Recorded By BLAKE MILLER

## Comments

THANK YOU FOR USING ELI WIRELINE, HAYS, KS. (785) 628-6395

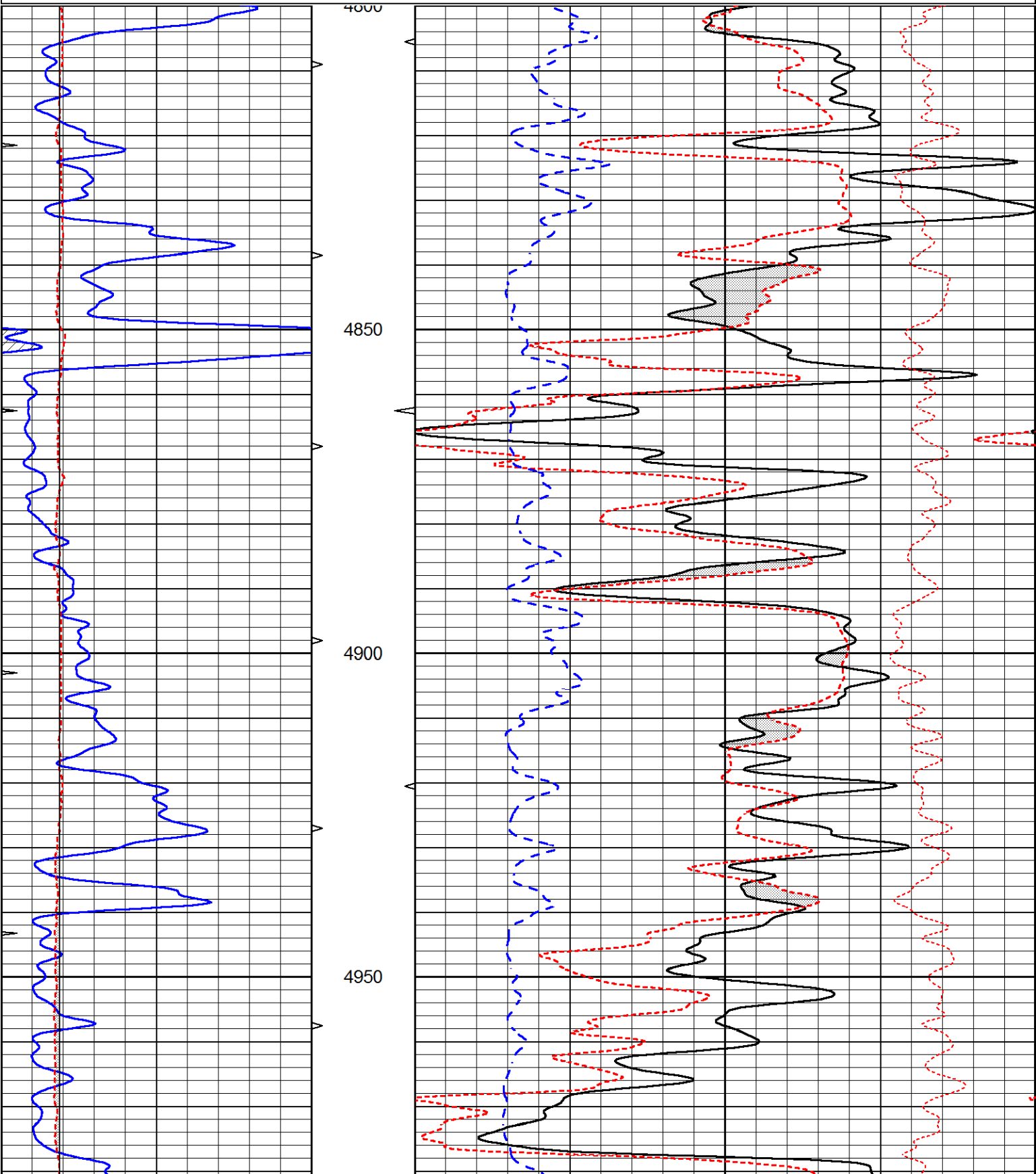
DIRECTIONS: HUGO COLORADO SOUTH 14 MILES TO G2 RD., WEST 5.5 MILES TO  
ENTRANCE, NORTH INTO ABOUT 2.5 MILES IN PASTURE.

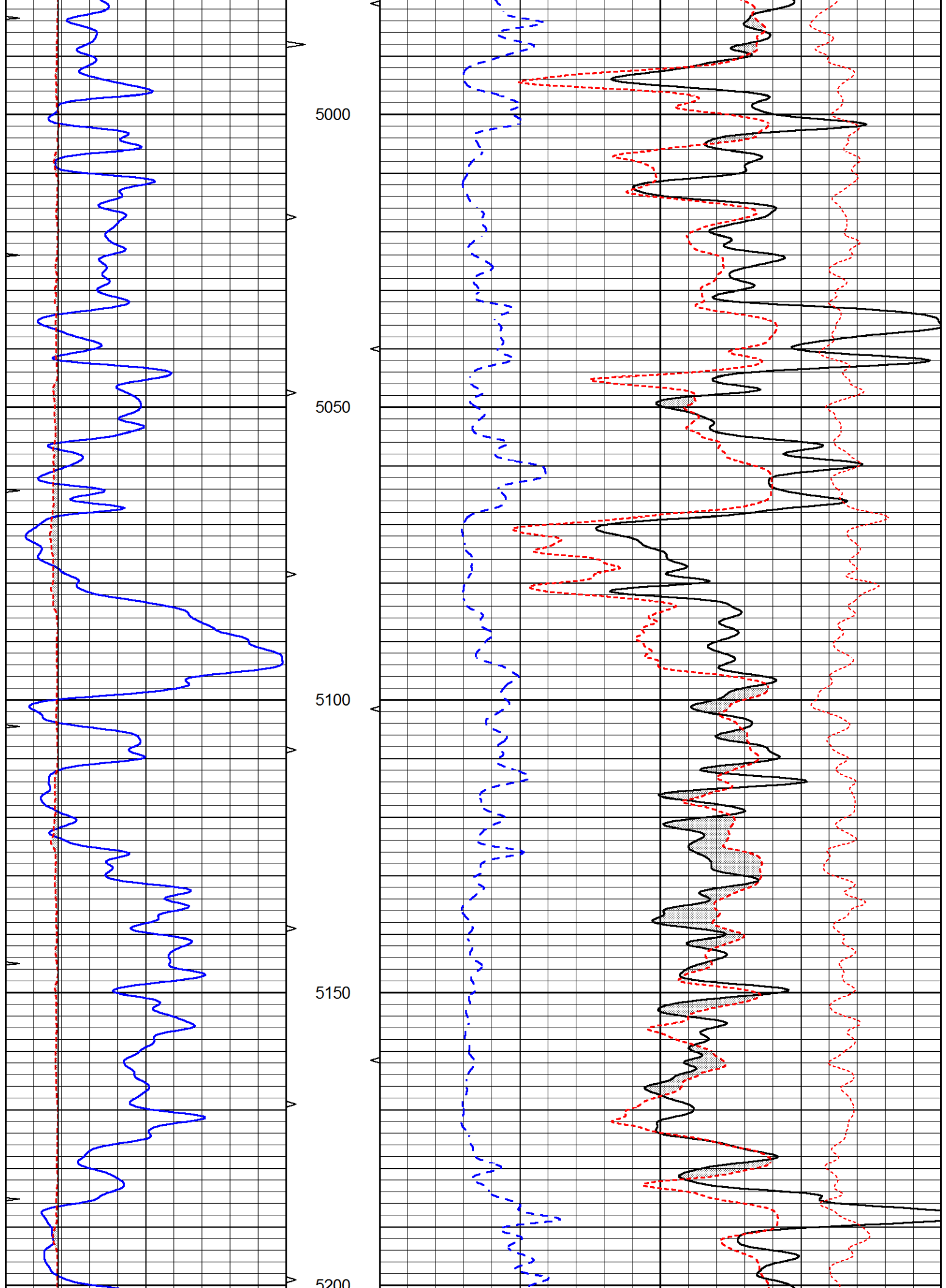


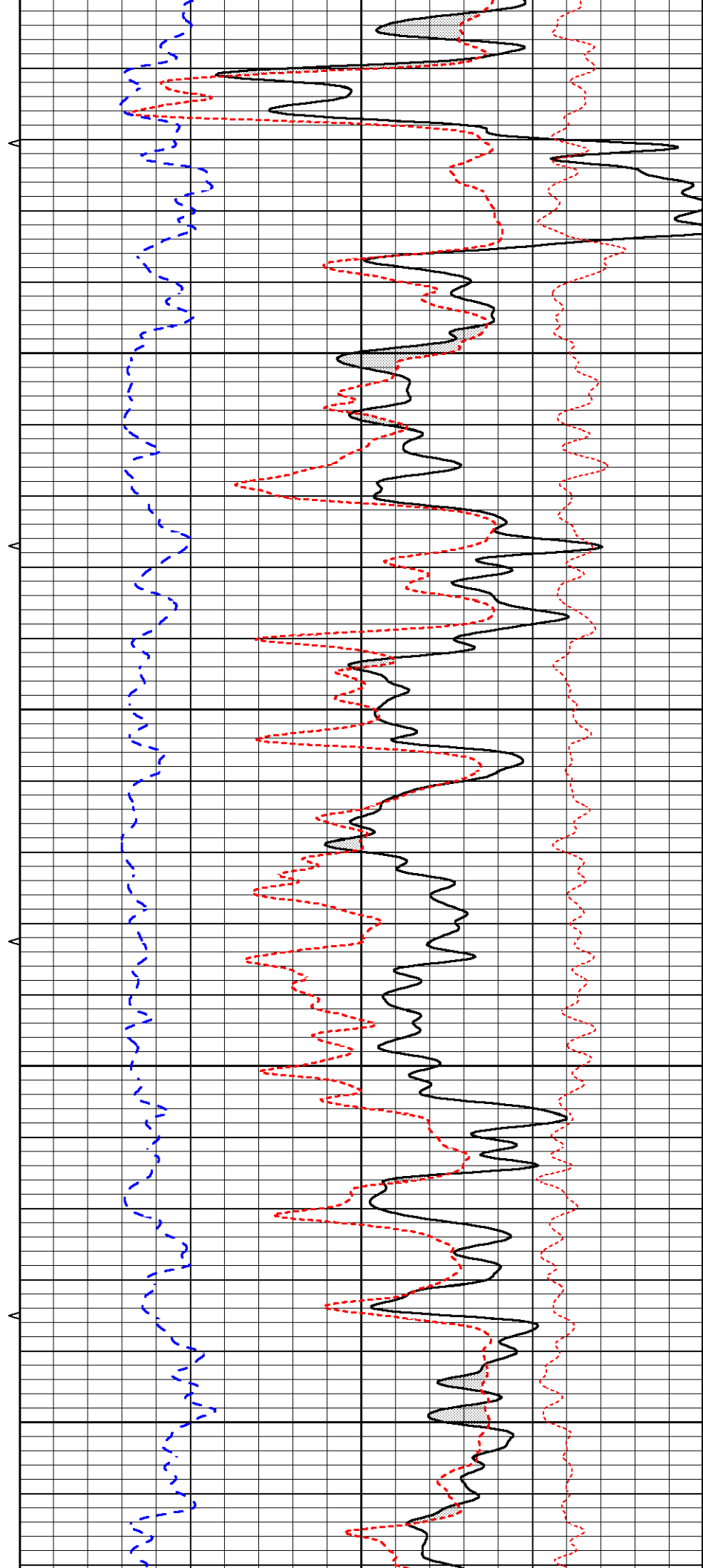
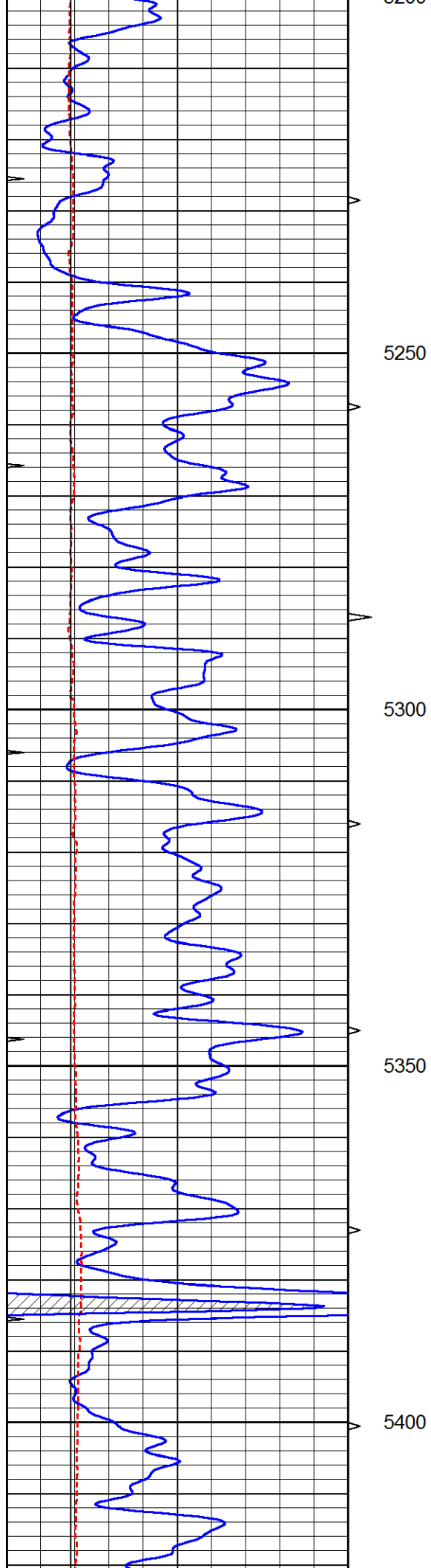
# MAIN PASS

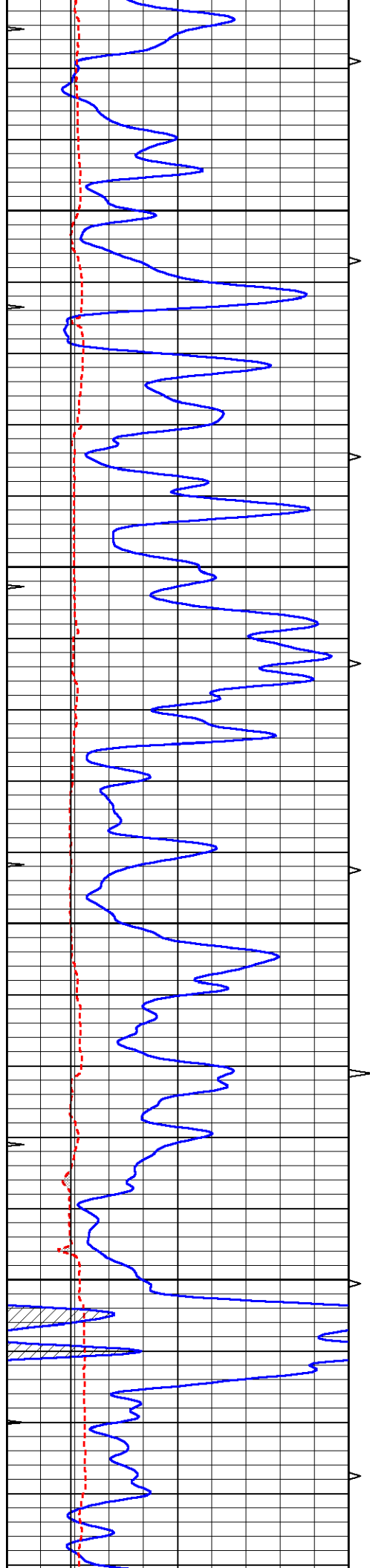
Database File	5887pe.db
Dataset Pathname	pass3.1
Presentation Format	_ldt_neu
Dataset Creation	Sun Oct 17 09:47:44 2021
Charted by	Depth in Feet scaled 1:240

0	GAMMA RAY (GAPI)	150	ABHV	30	COMPENSATED DENSITY (pu)	-10
6	CALIPER (in)	16	10 (ft3)	0	COMPENSATED NEUTRON (pu)	-10
0	MINMK	20	TBHV	0	PE	10 -0.25
			0 (ft3)	10	CORRECTION (g/cc)	0.25







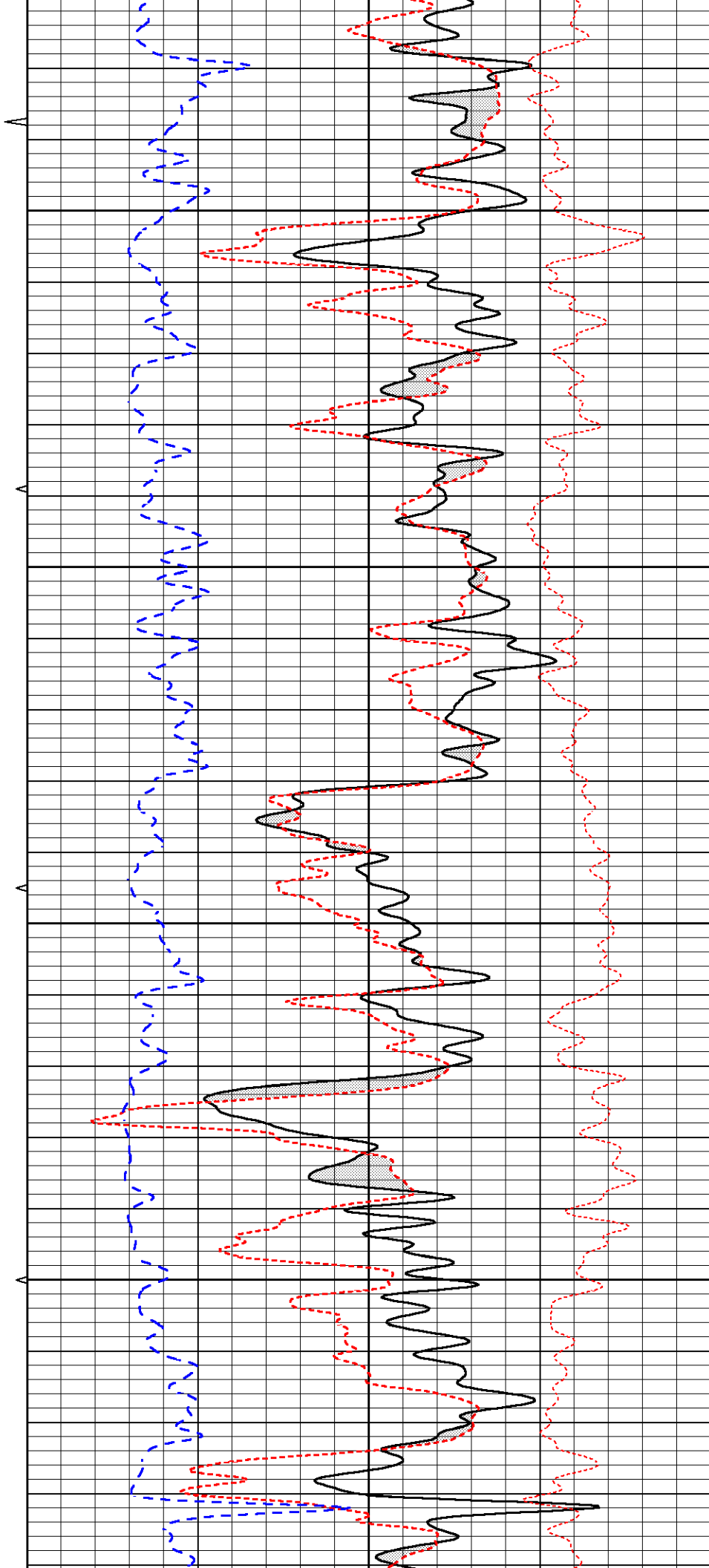


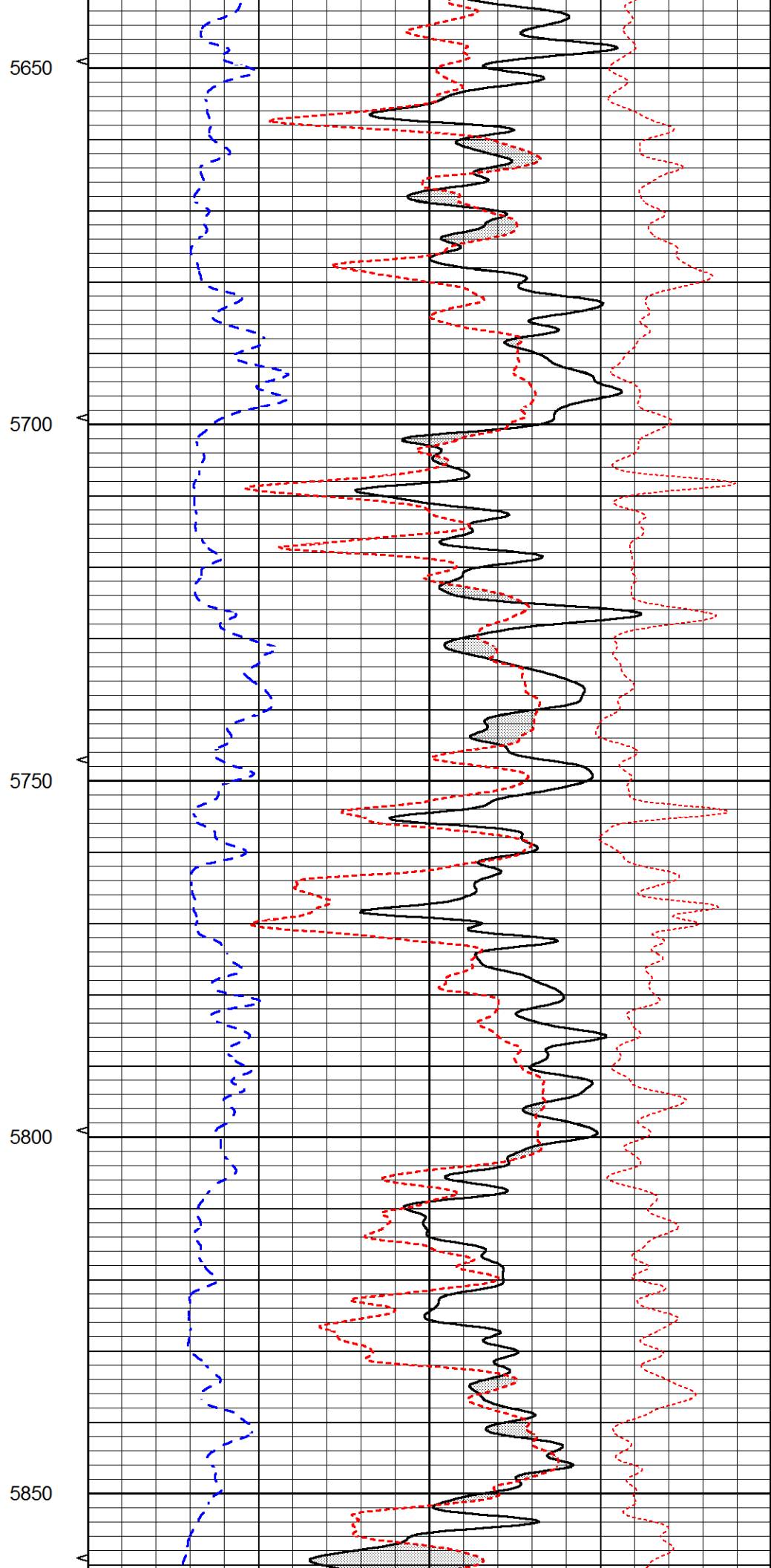
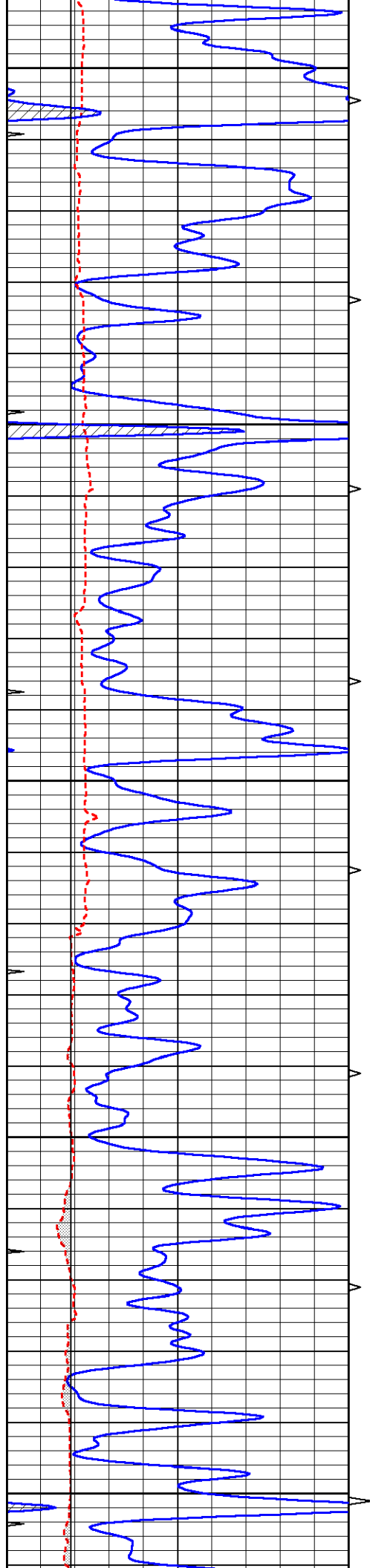
5450

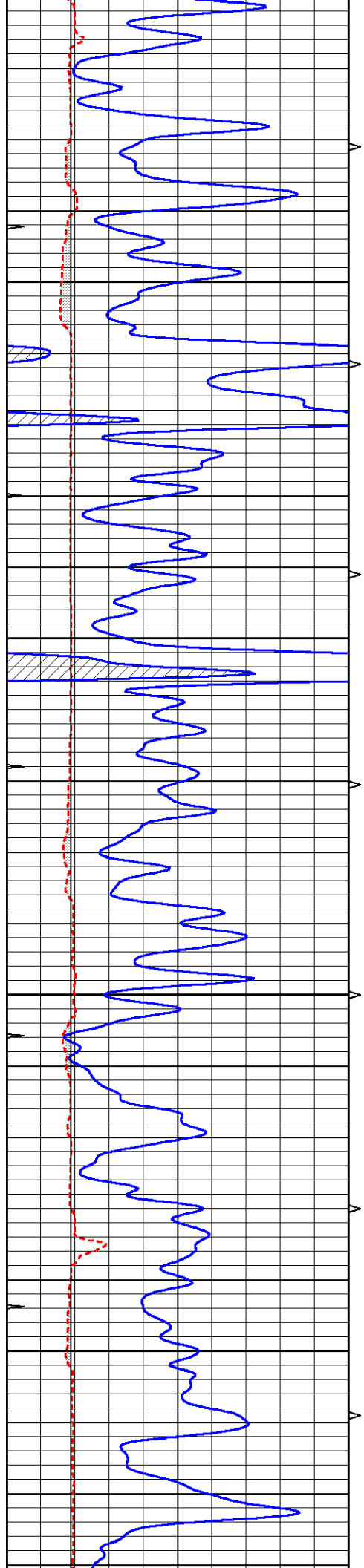
5500

5550

5600





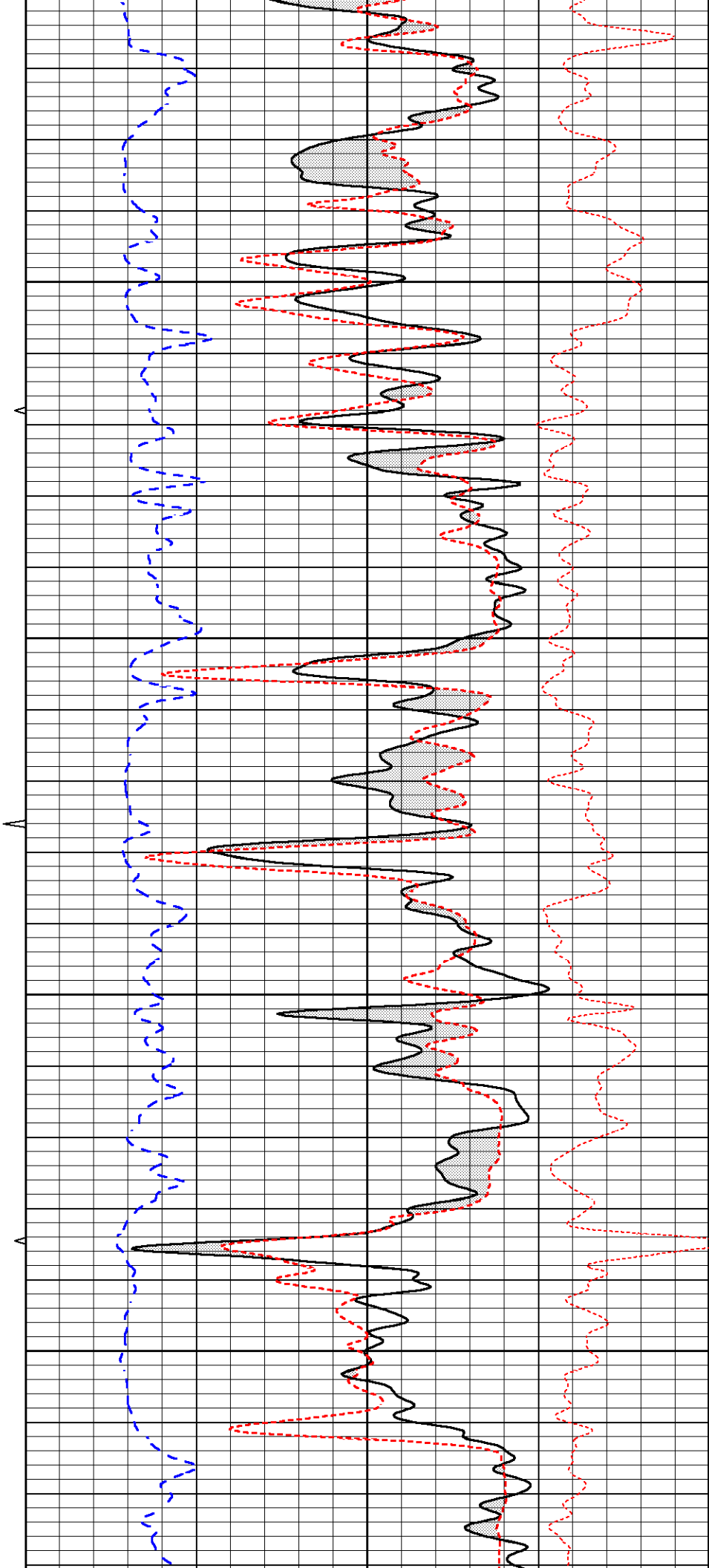


5900

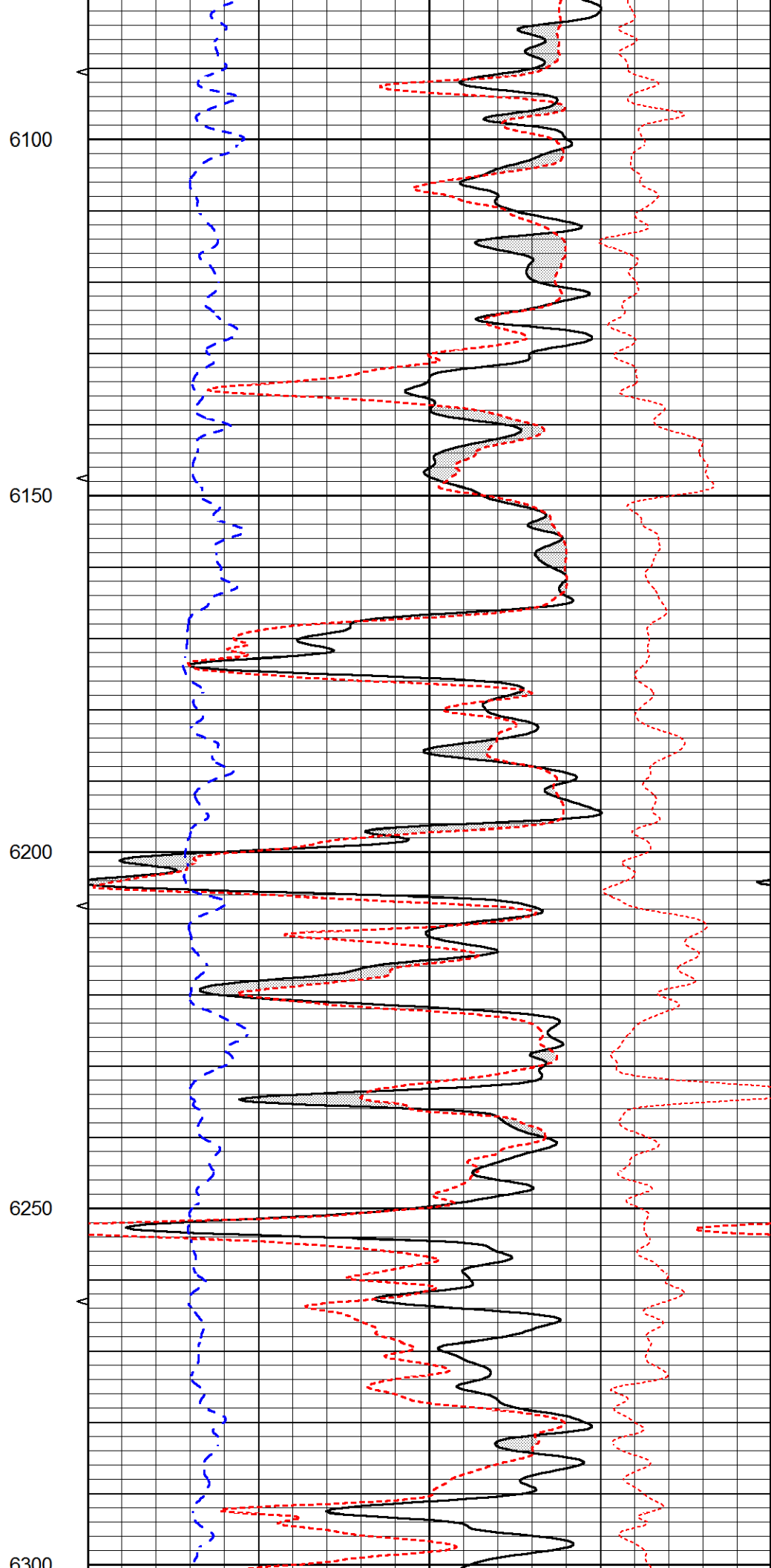
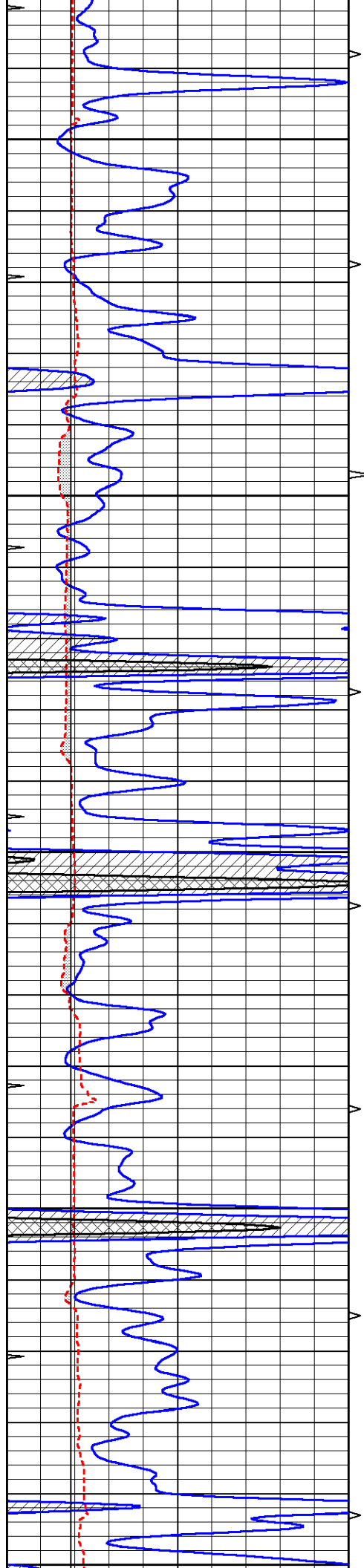
5950

6000

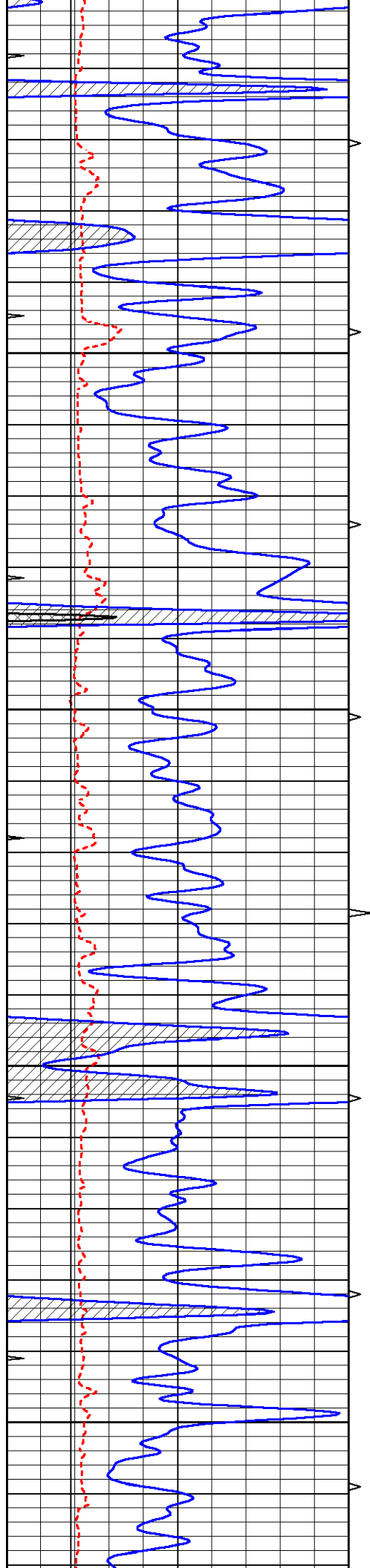
6050



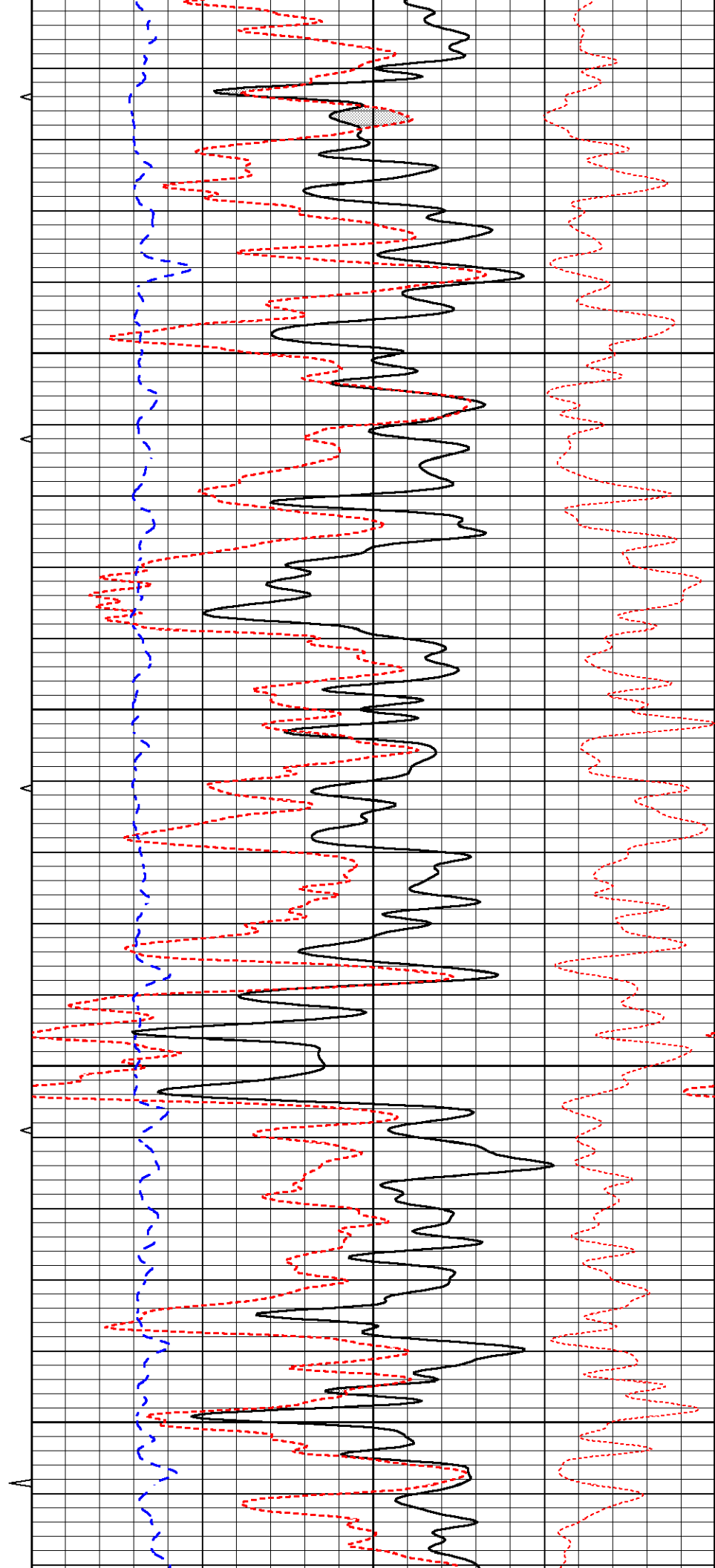


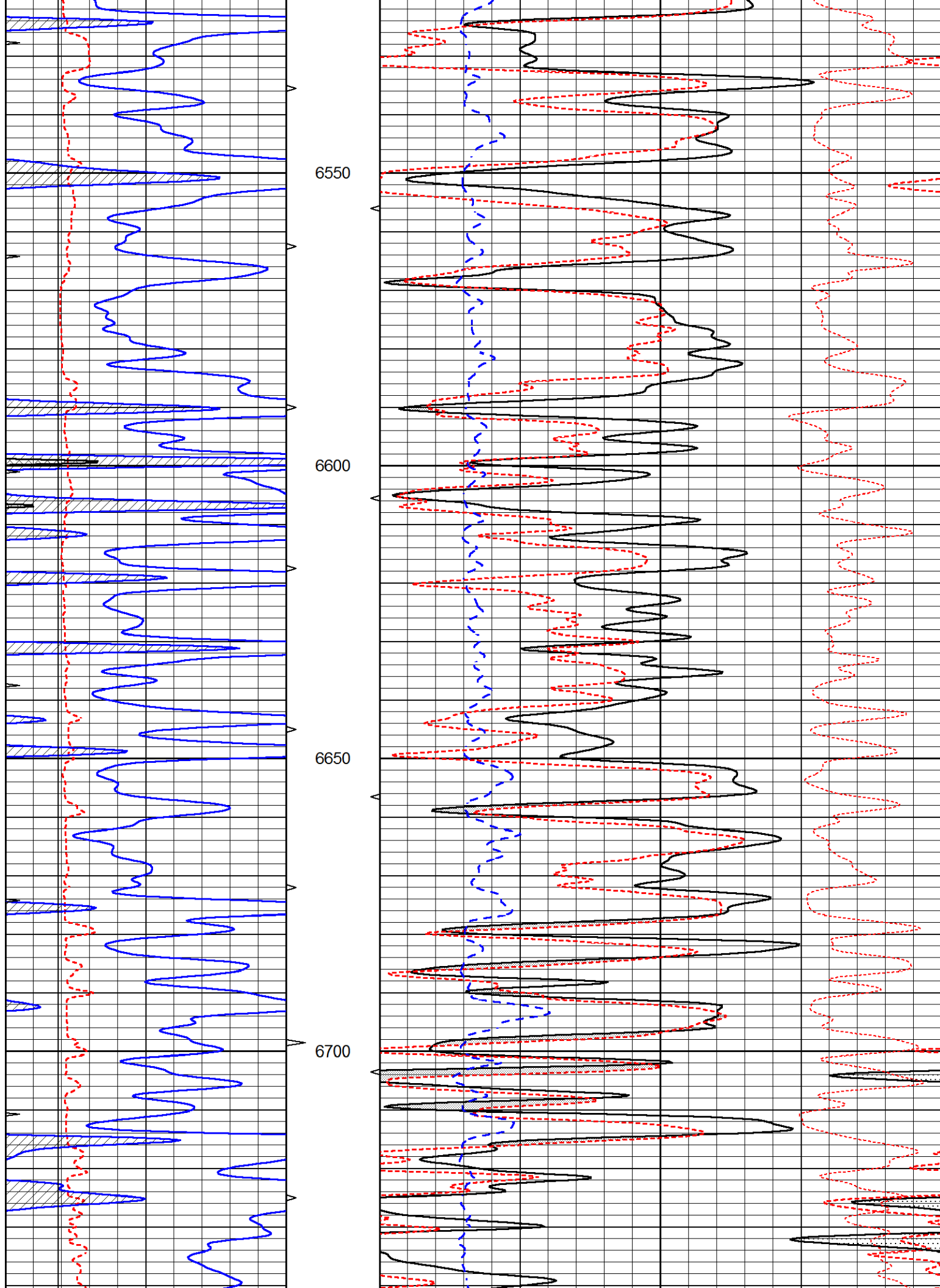


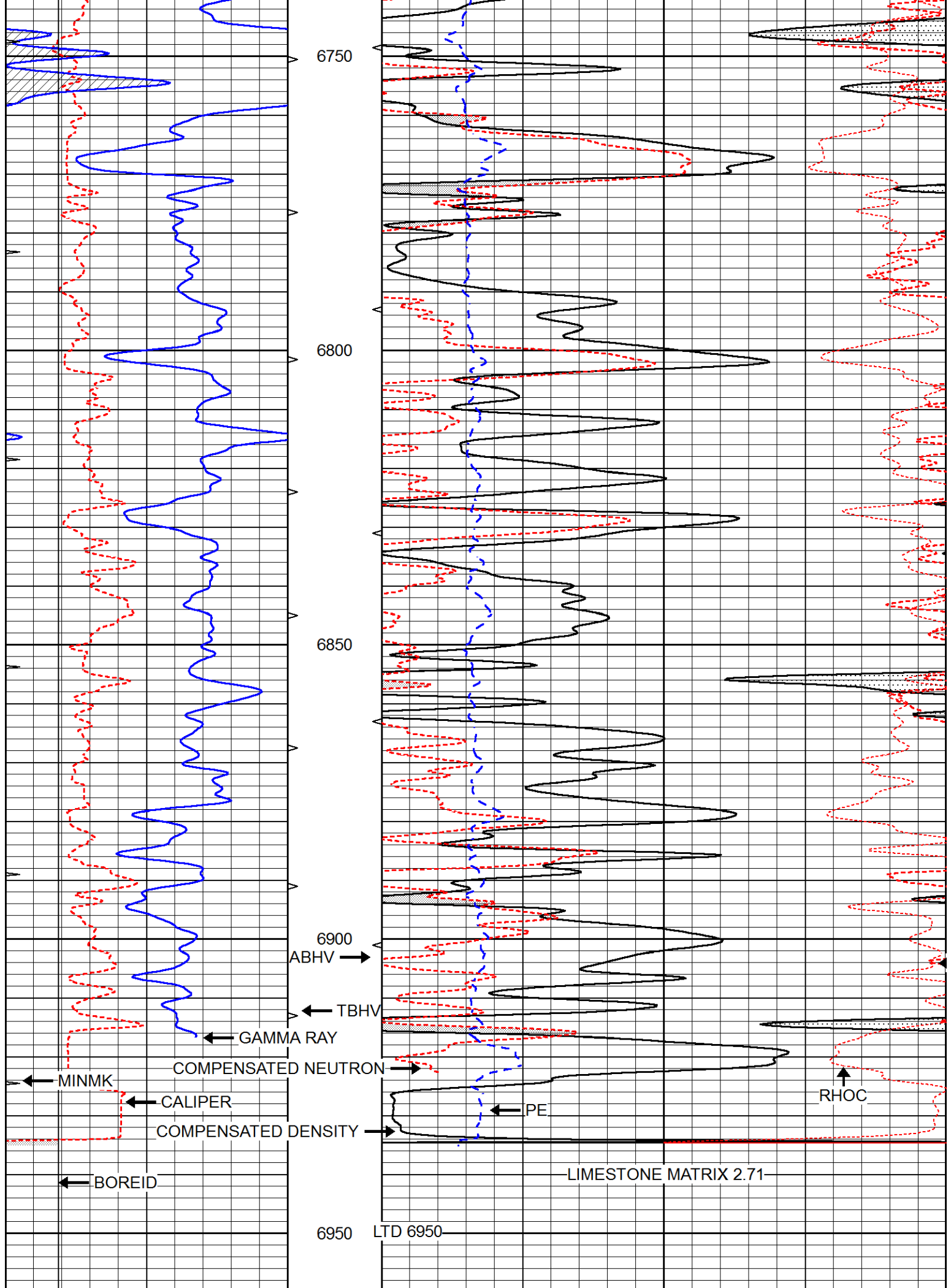




6500  
6450  
6400  
6350







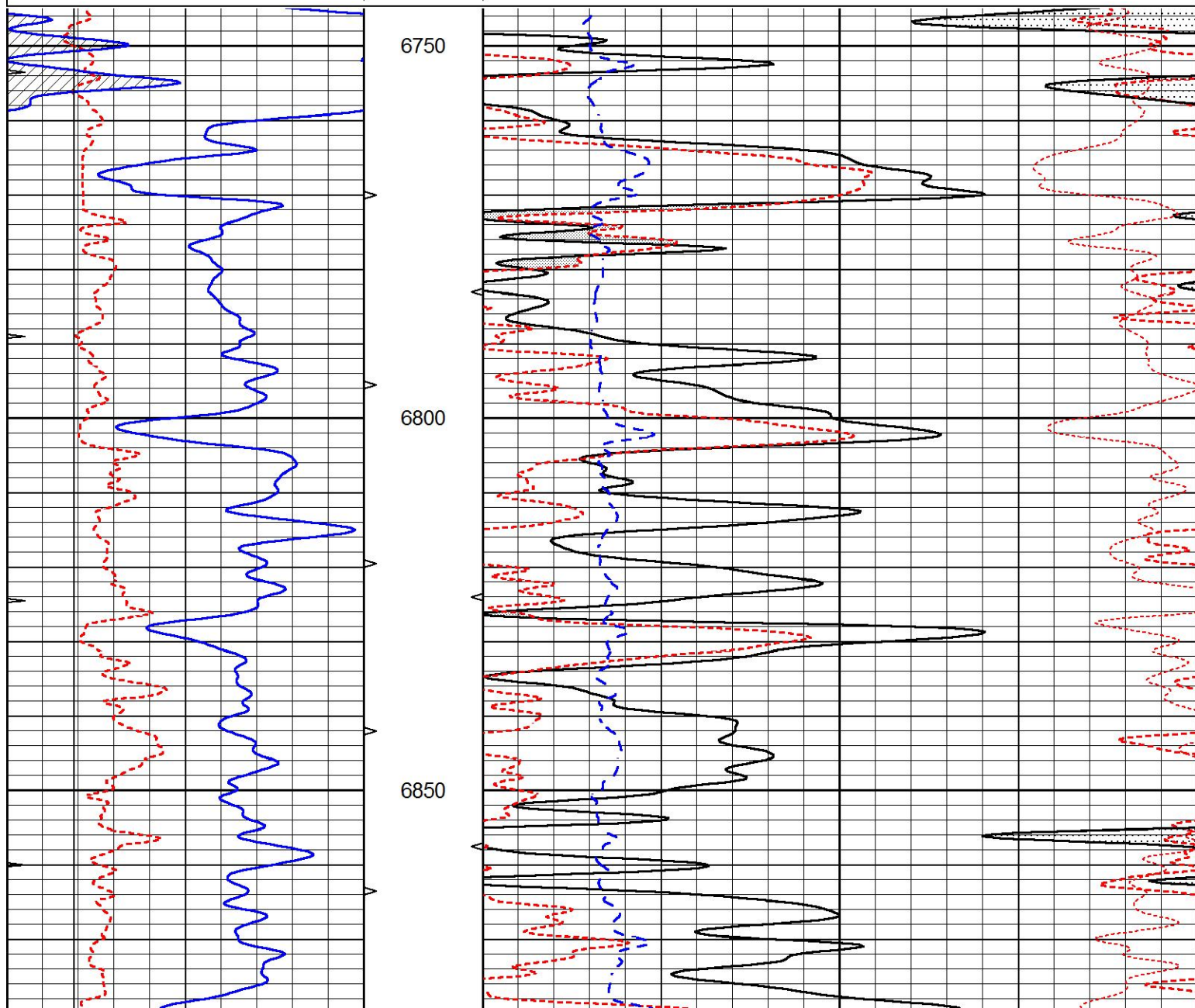
0	GAMMA RAY (GAPI)	150	ABHV	30	COMPENSATED DENSITY (pu)	-10
6	CALIPER (in)	16	10 (ft3) 0	30	COMPENSATED NEUTRON (pu)	-10
0	MINMK	20	TBHV	0	PE	10 -0.25 CORRECTION (g/cc) 0.25
			0 (ft3) 10			

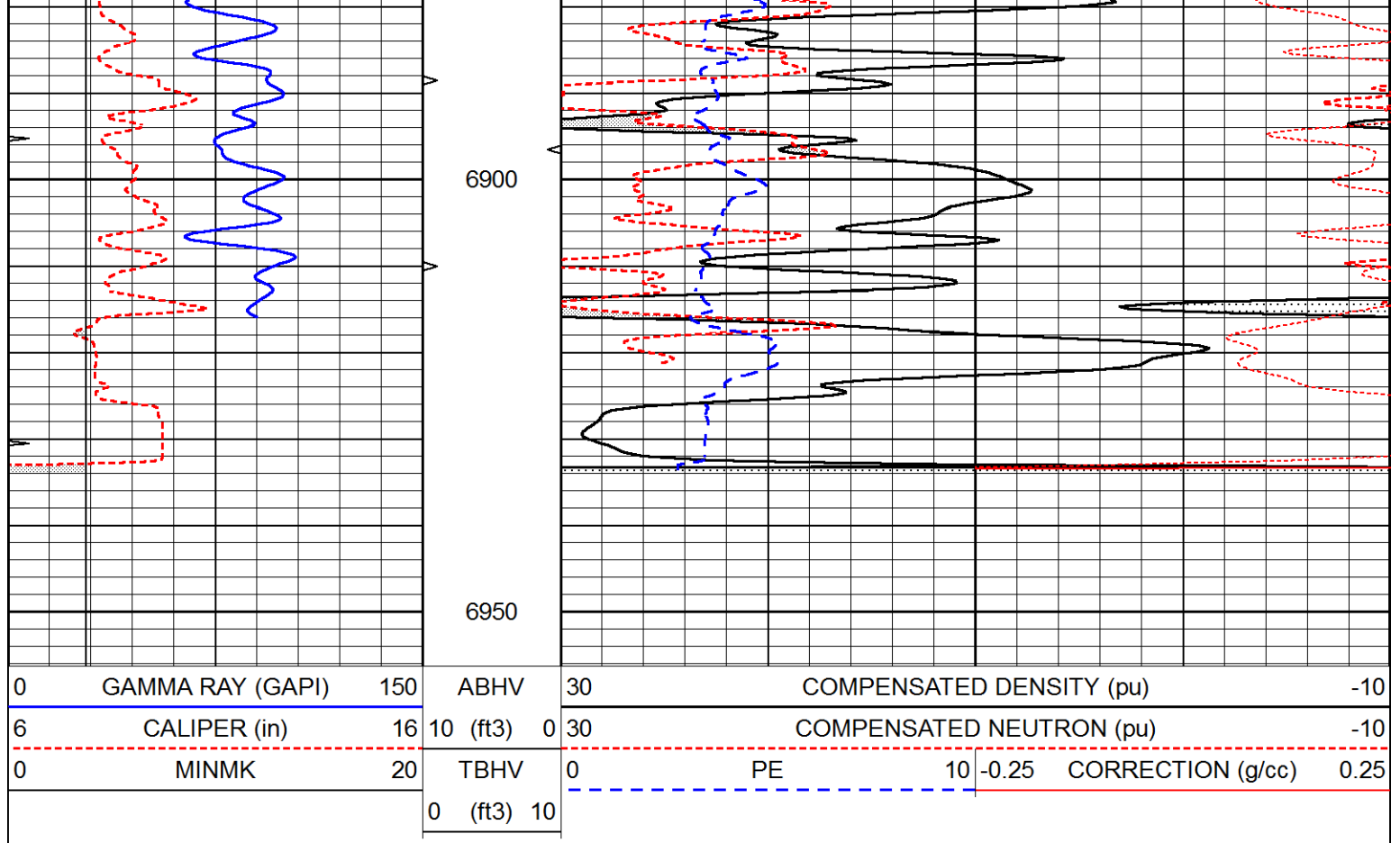


# REPEAT SECTION

Database File 5887pe.db  
 Dataset Pathname pass2.1  
 Presentation Format \_ldt\_neu  
 Dataset Creation Sun Oct 17 10:04:21 2021  
 Charted by Depth in Feet scaled 1:240

0	GAMMA RAY (GAPI)	150	ABHV	30	COMPENSATED DENSITY (pu)	-10
6	CALIPER (in)	16	10 (ft3) 0	30	COMPENSATED NEUTRON (pu)	-10
0	MINMK	20	TBHV	0	PE	10 -0.25 CORRECTION (g/cc) 0.25
			0 (ft3) 10			





Calibration Report									
Database File	5887pe.db								
Dataset Pathname	pass2.1								
Dataset Creation	Sun Oct 17 10:04:21 2021								
Dual Induction Calibration Report									
Serial-Model:					PROBE8-DILG				
Surface Cal Performed:					Fri Oct 01 14:24:33 2021				
Downhole Cal Performed:					Mon Sep 10 14:28:38 2018				
After Survey Verification Performed:					Mon Sep 10 14:28:40 2018				
Surface Calibration									
Readings				References			Results		
Loop:	Air	Loop		Air	Loop		m	b	
Deep	0.015	0.648	V	0.000	400.000	mmho/m	620.000	0.000	
Medium	0.029	0.796	V	0.000	464.000	mmho/m	590.000	-15.000	
Internal:	Zero	Cal		Zero	Cal		m	b	
Deep	0.017	0.657	V	0.000	400.000	mmho/m	625.153	-10.619	
Medium	0.016	0.757	V	0.000	464.000	mmho/m	625.992	-9.739	
Downhole Calibration									
Readings				References			Results		
	Zero	Cal		Zero	Cal		m'	b'	
Deep	0.000	0.000	mmho/m	2.011	405.777	mmho/m	1.000	0.000	
Medium	0.000	0.000	mmho/m	7.590	503.393	mmho/m	1.000	0.000	
LL3		7.500	V		1500.000	Ohm-m			
		0.000	V		20.000	Ohm-m			
		-7.200	V		3800.000	mmho-m			





Detector		Readings		Target		Normalization
Short Space		1.00	cps	1.00	cps	1.0000
Long Space		1.00	cps	1.00	cps	1.0000
PRE-SURVEY VERIFICATION						
Detector		Readings		Measured	Target	
1)	Short Space		cps			
	Long Space		cps	pu		pu
2)	Short Space		cps			
	Long Space		cps	pu		
3)	Short Space		cps			
	Long Space		cps	pu		
POST-SURVEY VERIFICATION						
Detector		Readings		Measured	Target	
1)	Short Space		cps			
	Long Space		cps	pu		pu
2)	Short Space		cps			
	Long Space		cps	pu		pu
3)	Short Space		cps			
	Long Space		cps	pu		pu
Gamma Ray Calibration Report						
Serial Number:		GR6				
Tool Model:		OPEN				
Performed:		Thu Jul 30 20:04:35 2020				
Calibrator Value:		150.0	GAPI			
Background Reading:		0.0	cps			
Calibrator Reading:		276.0	cps			
Sensitivity:		0.7500	GAPI/cps			