



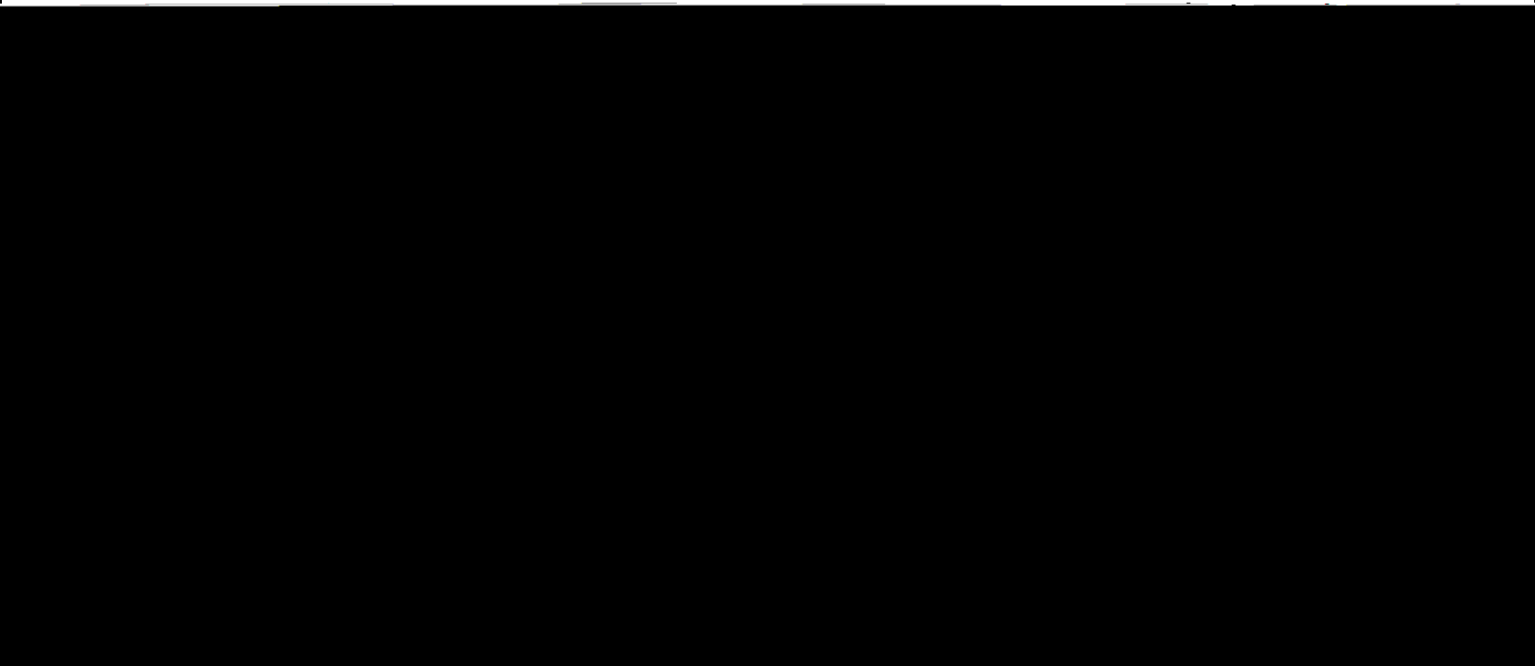
Company		AC McLaughlin Jr #33	
Well	Rangley		
Field	Rio Blanco		
County	Rio Blanco	State	Colorado
Location:		API # : 05-103-05254	Other Services
Ac McLaughlin Jr #33			
SEC NA TWP NA RGE NA		Elevation	
Permanent Datum	Log Measured From		K.B. D.F. G.L.
Drilling Measured From			

Date					04/01/21				
Run Number					1				
Depth Driller									
Depth Logger					1034				
Bottom Logged Interval					1034				
Top Log Interval									
Open Hole Size									
Type Fluid									
Density / Viscosity									
Max. Recorded Temp.									
Estimated Cement Top									
Time Well Ready					0800				
Time Logger on Bottom					0815				
Equipment Number					T-773				
Location									
Recorded By					Christensen				
Witnessed By					S. Chollett				
Borehole Record					Tubing Record				
Run Number	Bit	From	To	Size	Weight	From	To		
Casing Record	Size			Wgt/Ft	Top		Bottom		
Surface String									
Prot. String									
Production String									
Liner									

<<< Fold Here >>>

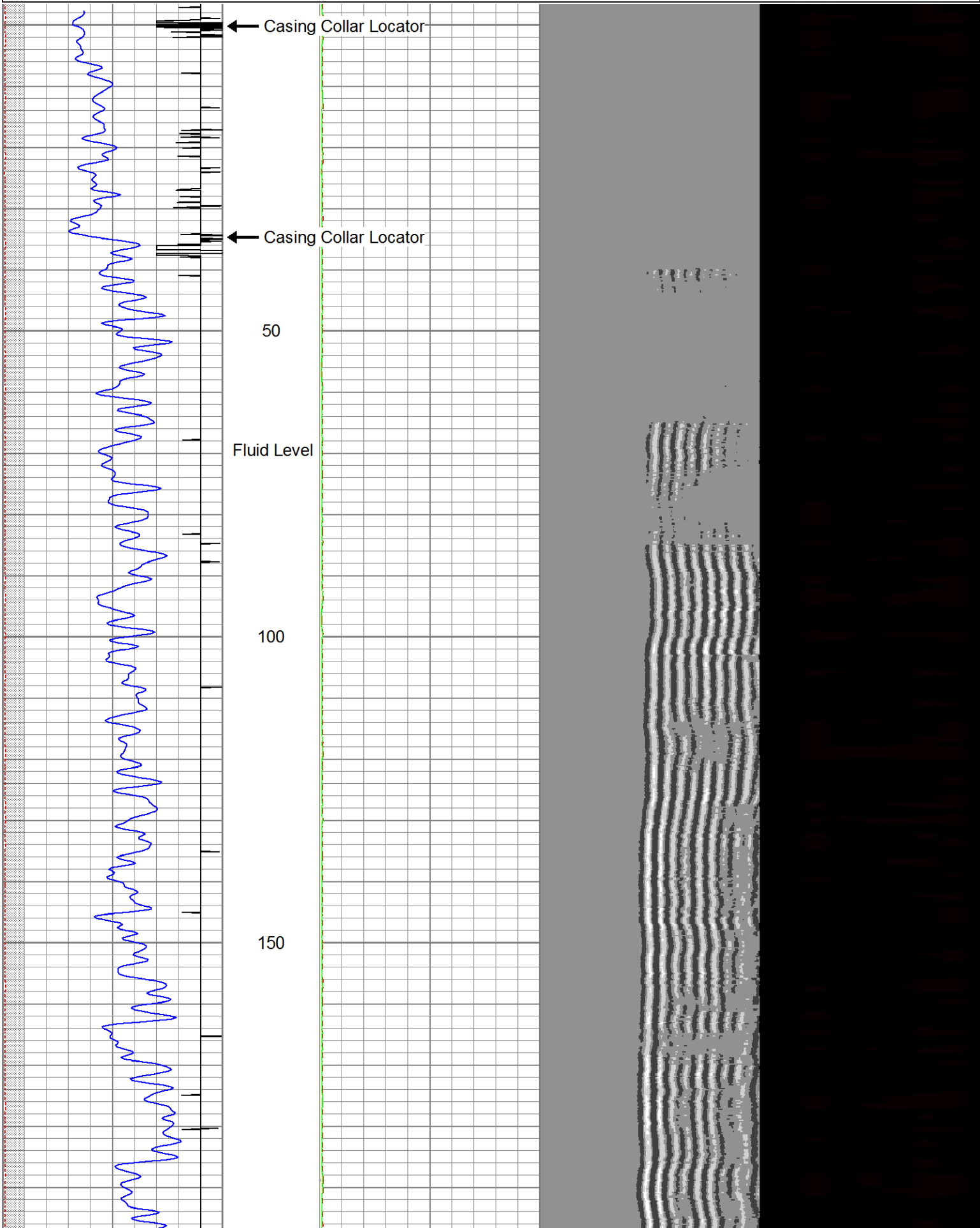
All interpretations are opinions based on inferences from electrical or other measurements and we cannot and do not guarantee the accuracy or correctness of any interpretation, and we shall not, except in the case of gross or willful negligence on our part, be liable or responsible for any loss, costs, damages, or expenses incurred or sustained by anyone resulting from any interpretation made by any of our officers, agents or employees. These interpretations are also subject to our general terms and conditions set out in our current Price Schedule.

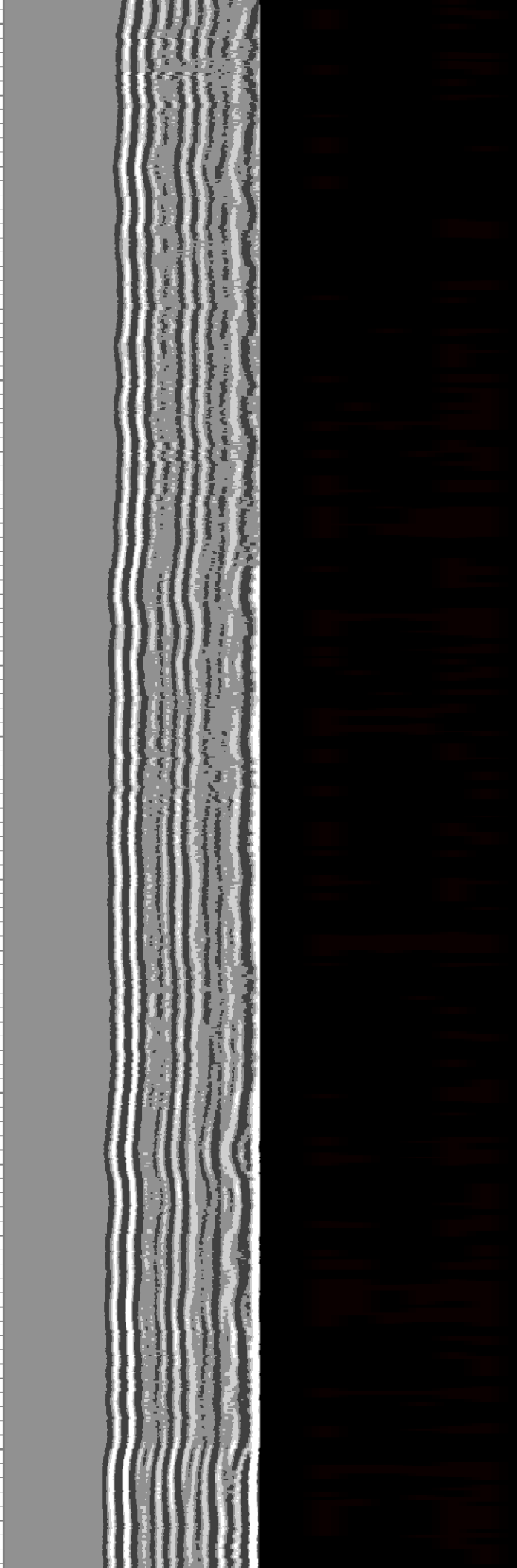
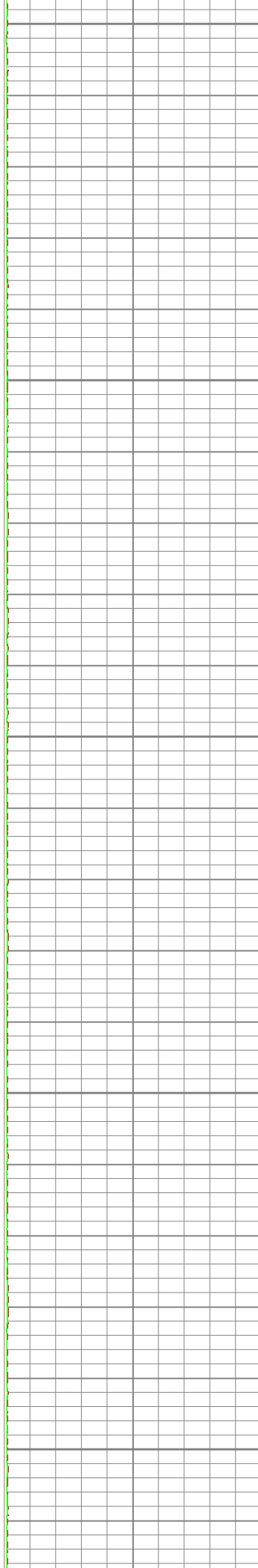
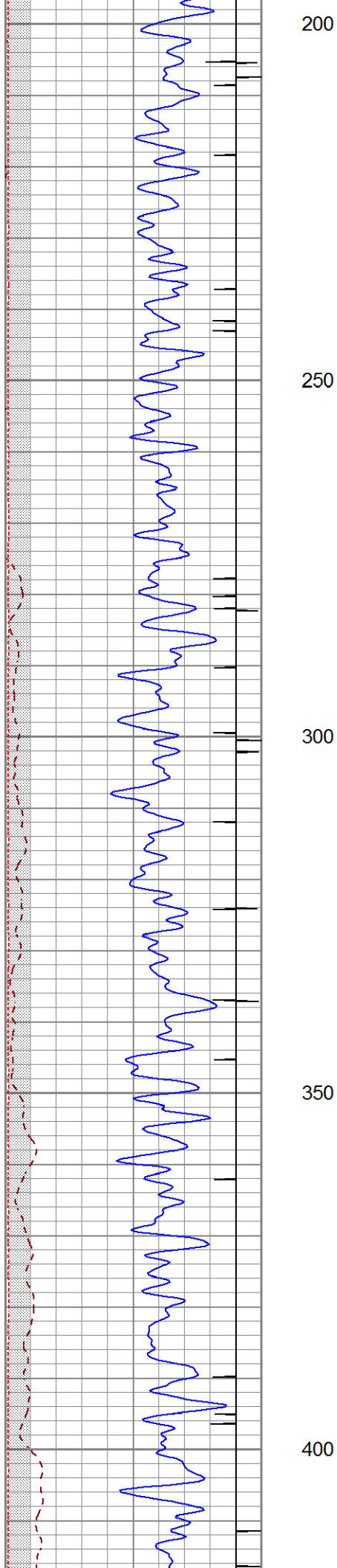
Comments

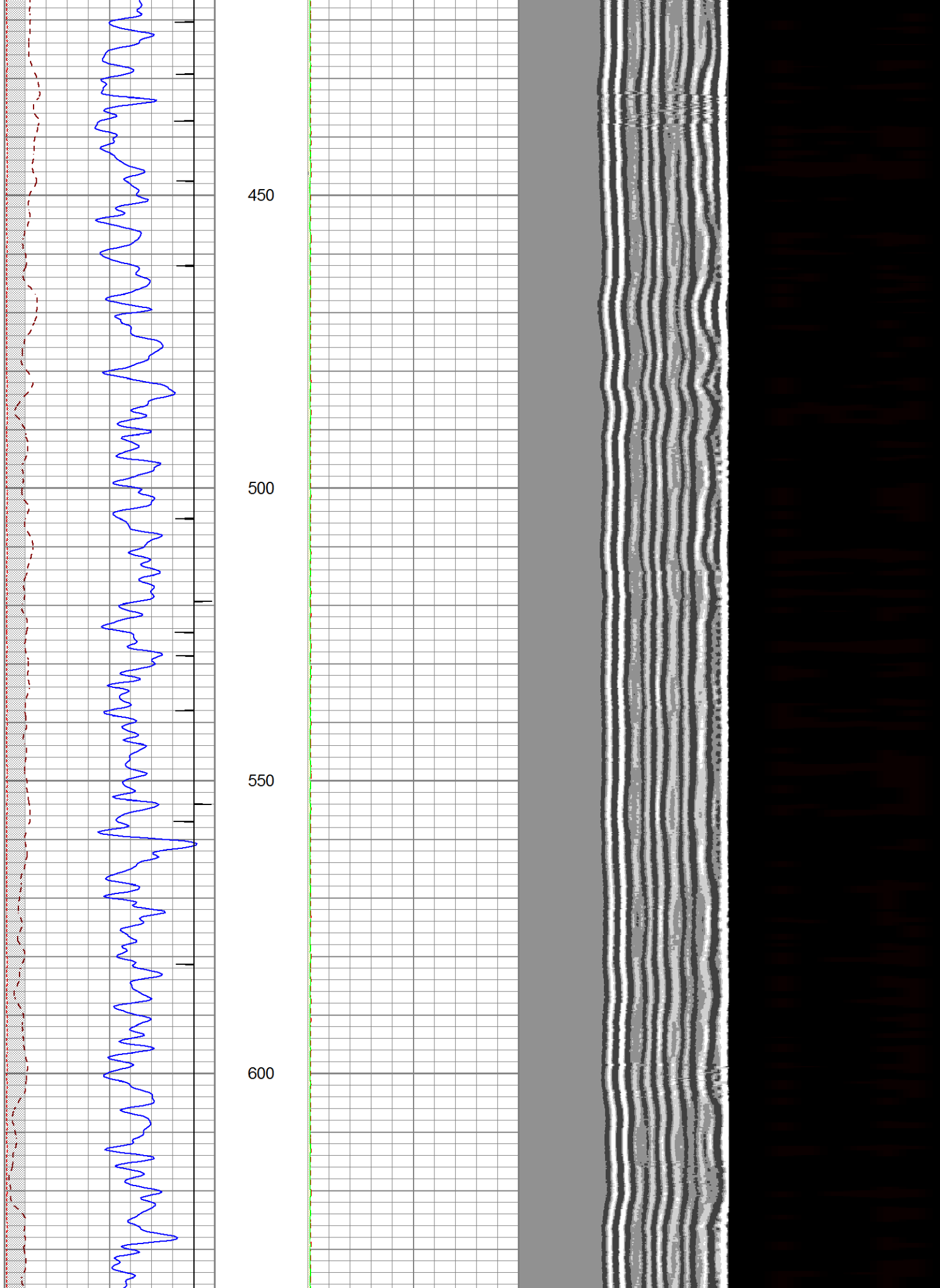


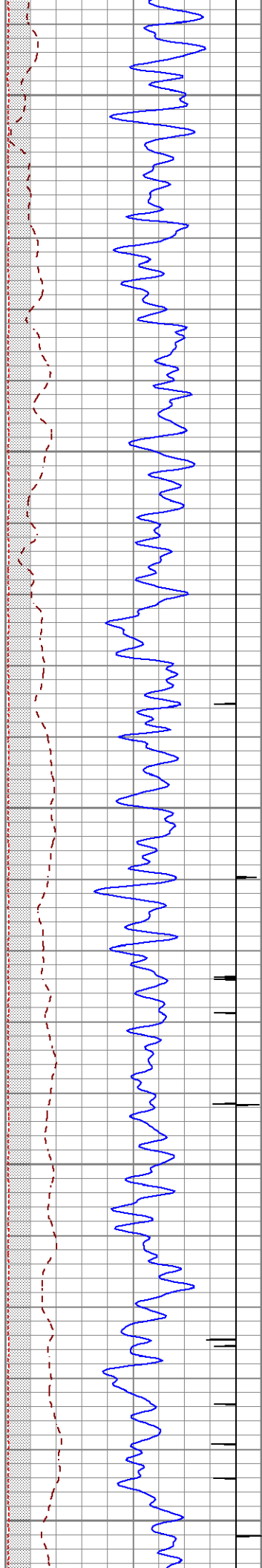
0	GR (GAPI)	200
430	TT3FT (usec)	230
9	CCL	-1
0	AMP3FT (mV)	100

0	AMPMAX	100
0	AMPAVG	100
0	AMPMIN	100









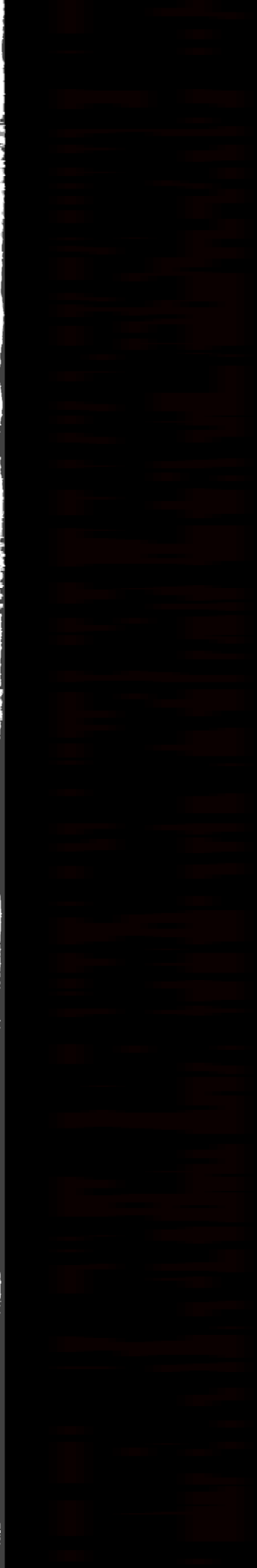
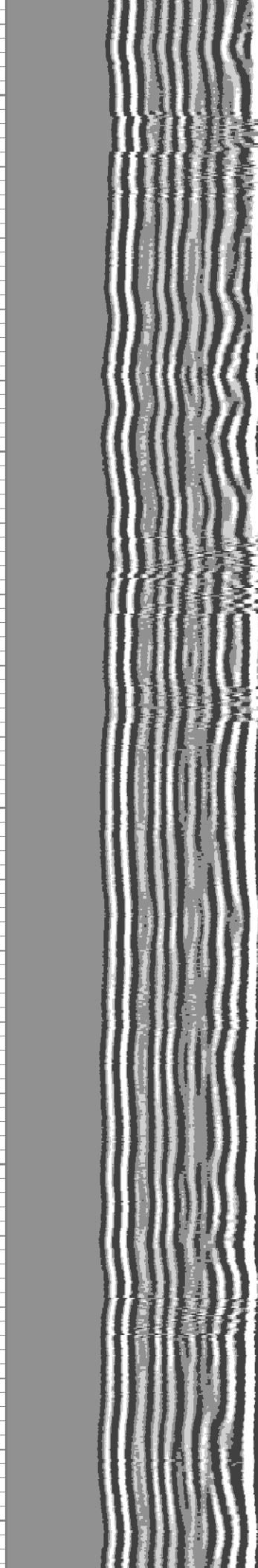
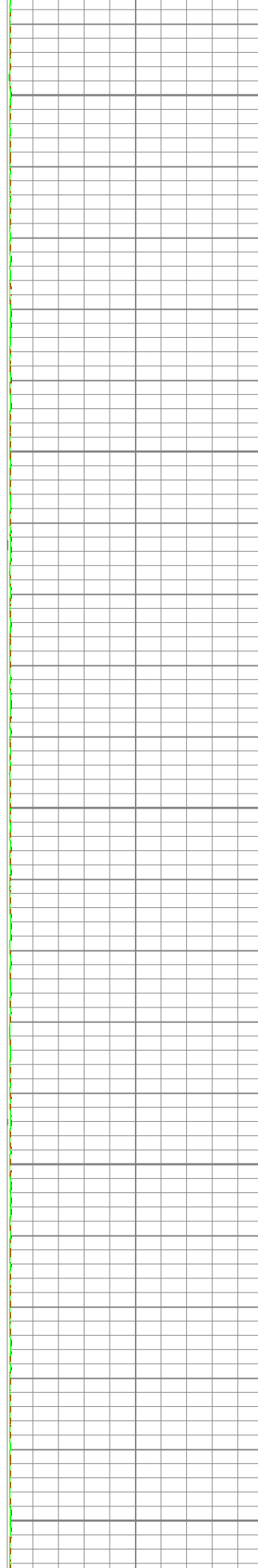
650

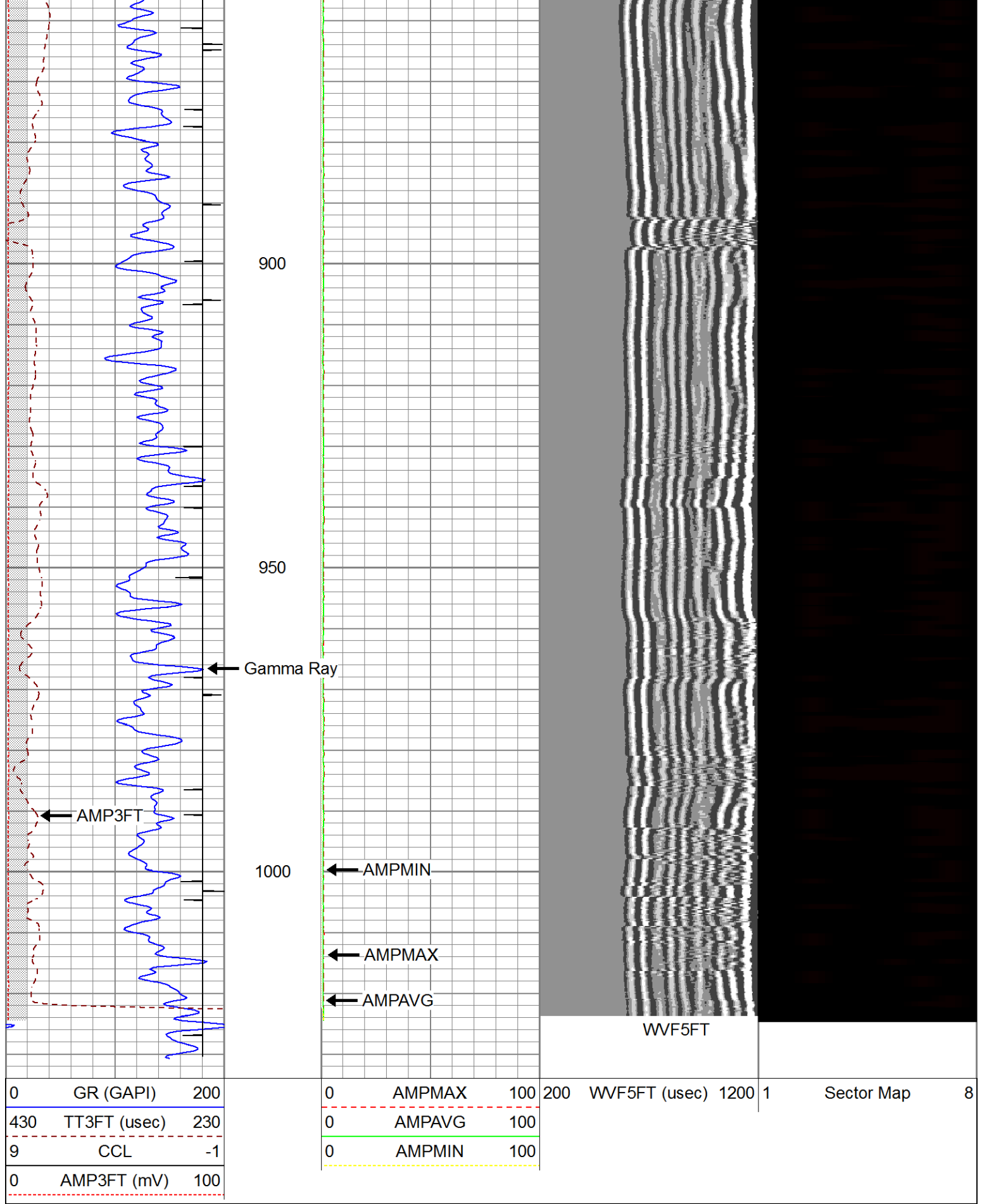
700

750

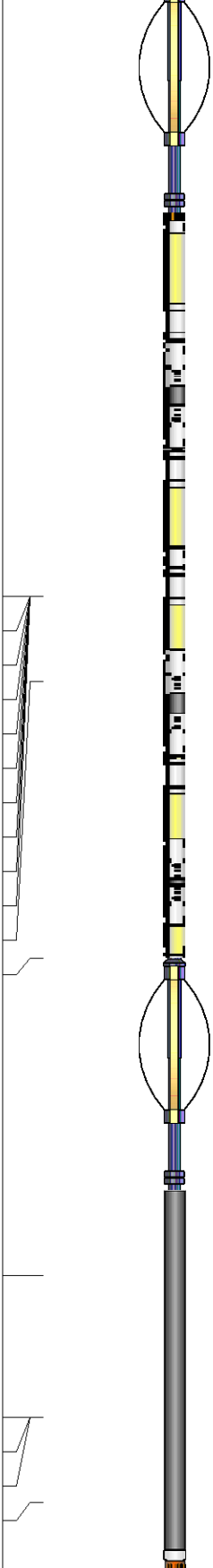
800

850





Tool Joint #	Tool Joint Description	Length (ft)	Weight (lb)	O.D. (in)
1	CENT-TitanBig Big Titan 3 Bowspring Centralizer	2.73	2.75	25.00
2	RBT-Radii (80553) Probe Radii SCBL Tool	8.75	2.75	90.00
3	CENT-TitanSmall Small Titan 3 Bowspring Centralizer	2.73	1.69	5.00
4	GR-275D_INC (275D_with_INC) 2-3/4" GR-CCL with Inclination	4.50	2.75	50.00
5	CCL	3.50		
6	ACCZ	1.83		
7	ACCY	1.83		
8	ACCX	1.83		
9	GR	0.83		
10	WVFS8	11.48		
11	WVFS7	11.48		
12	WVFS6	11.48		
13	WVFS5	11.48		
14	WVFS4	11.48		
15	WVFS3	11.48		
16	WVFS2	11.48		
17	WVFS1	11.48		
18	WVFCAL	11.48		
19	WVF3FT	11.48		
20	WVF5FT	10.48		
21	HEADVOLT	7.23		



Dataset: ac magloflaun jr#33.db: field/well/run1/pass1

Total length: 19.83 ft

Total weight: 175.00 lb

O.D.: 2.75 in



## Gamma Ray Calibration Report

Serial Number:	275D_with_INC	
Tool Model:	275D_INC	
Performed:	Wed Feb 08 10:55:44 2017	
Calibrator Value:	200.0	GAPI
Background Reading:	54.0	cps
Calibrator Reading:	250.0	cps
Sensitivity:	0.9000	GAPI/cps

## Inclinometer Calibration Report

Performed:	Mon May 11 14:29:05 2009				
	Low Read.	High Read.	Low Ref.	High Ref.	
X Accelerometer	-3583.20	3593.60	-1.00	1.00	gee
Y Accelerometer	-3666.60	3525.20	-1.00	1.00	gee
Z Accelerometer	-63.60	3566.60	0.00	1.00	gee

## Segmented Cement Bond Log Calibration Report

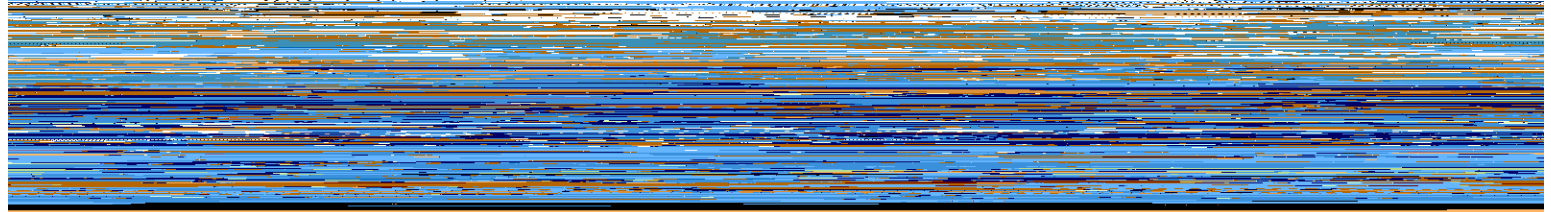
Serial Number:	80553	
Tool Model:	Radii	
Calibration Casing Diameter:	5.500	in
Calibration Depth:	0.000	ft

Master Calibration, performed Wed Mar 24 09:42:17 2021:

Raw (v)

Calibrated (mv)

Results



al Reference Calibration, performed Fri Jan 11 16:36:21 2019

Intern

Raw (v)		Calibrated (v)		Results	
Zero	Cal	Zero	Cal	Gain	Offset
0.000	0.000	-0.001	2.484	1.000	0.000

CAL



	Raw (v)	Calibrated (v)	Results
	Zero	Zero	Offset
3'	0.000	0.000	0.000
5'	0.000	0.000	0.000
SUM			
S1	0.000	0.000	0.000
S2	0.000	0.000	0.000
S3	0.000	0.000	0.000
S4	0.000	0.000	0.000
S5	0.000	0.000	0.000
S6	0.000	0.000	0.000
S7	0.000	0.000	0.000
S8	0.000	0.000	0.000