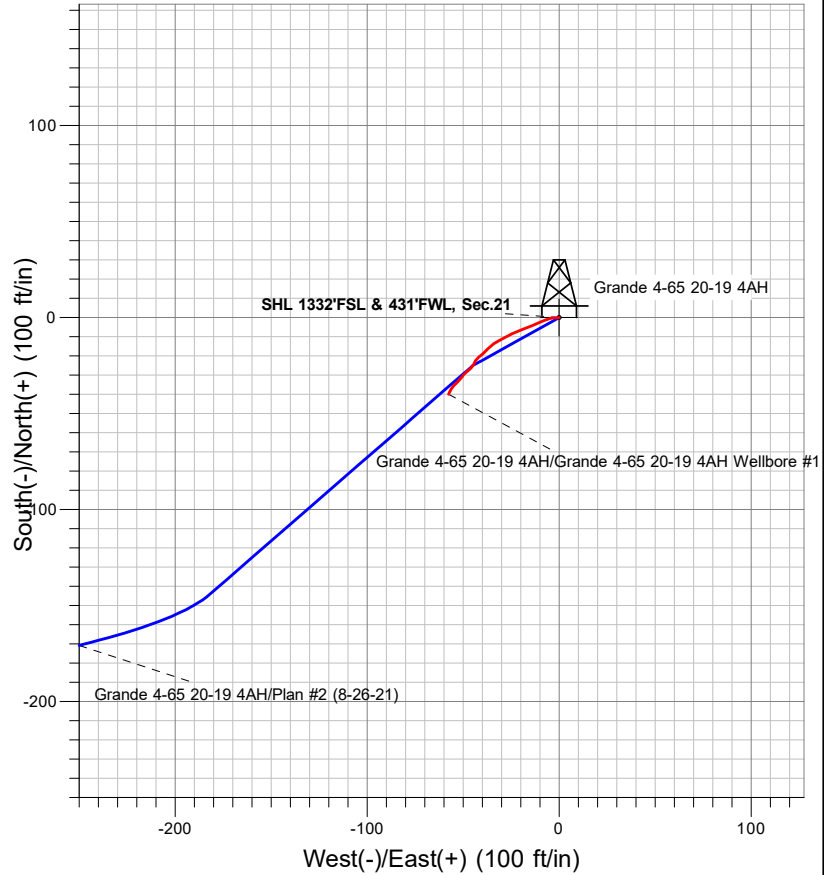


## Crestone Peak Resources

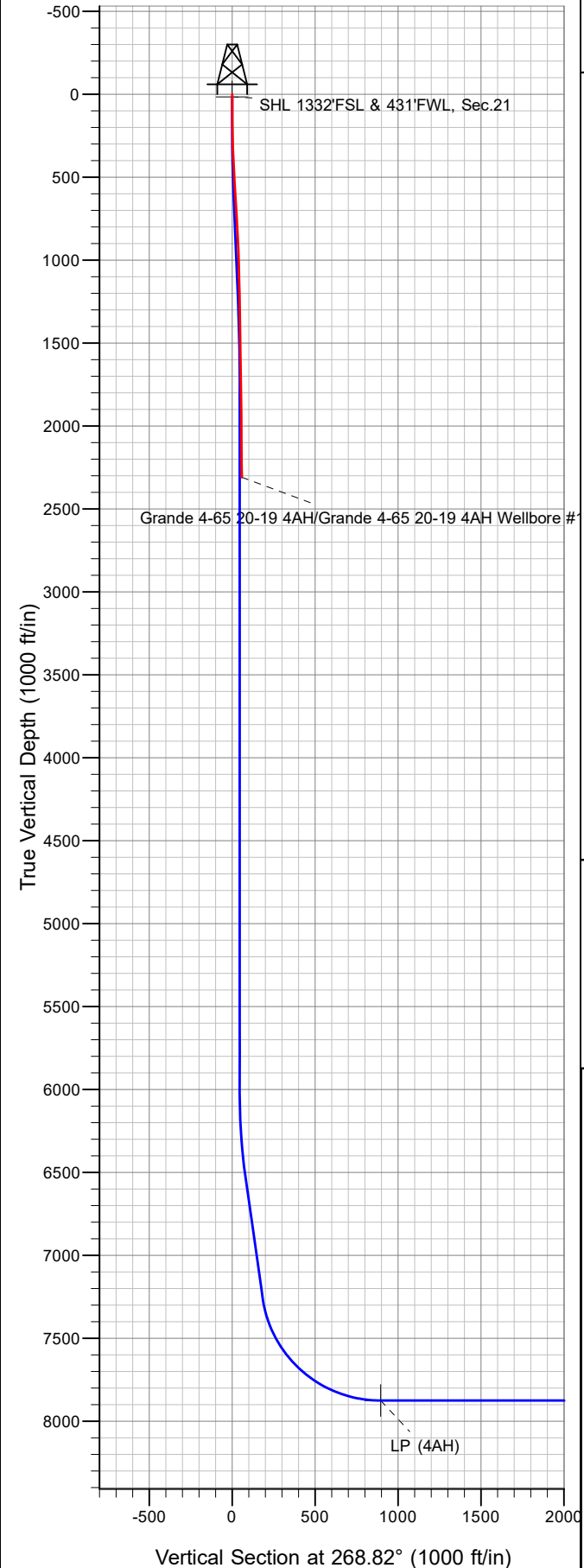


### LEGEND

- Grande 4-65 20-19 4AH, Grande 4-65 20-19 4AH Wellbore #1, Plan #2 (8-26-21) V0
- Grande 4-65 20-19 4AH Wellbore #1

## Final Survey Plot

Project: SEC.21-T4S-R65W  
 Site: Grande 6-65 20-19 3AH South Pad Sec.21-T4S-R65W  
 Well: Grande 4-65 20-19 4AH  
 Plan: Grande 4-65 20-19 4AH Wellbore #1





## **Crestone Peak Resources**

**SEC.21-T4S-R65W**

**Grande 6-65 20-19 3AH South Pad Sec.21-T4S-R65W**

**Grande 4-65 20-19 4AH**

**Grande 4-65 20-19 4AH Wellbore #1**

**Design: Grande 4-65 20-19 4AH Wellbore #1**

## **Standard Survey Report**

**15 September, 2021**

Survey										
	Measured Depth (ft)	Inclination (°)	Azimuth (°)	Vertical Depth (ft)	+N-S (ft)	+E-W (ft)	Vertical Section (ft)	Dogleg Rate (°/100usft)	Build Rate (°/100usft)	Turn Rate (°/100usft)
Survey Data	0.0	0.00	0.00	0.0	0.0	0.0	0.0	0.00	0.00	0.00
	144.0	0.79	266.45	144.0	-0.1	-1.0	1.0	0.55	0.55	0.00
	235.0	0.88	270.67	235.0	-0.1	-2.3	2.3	0.12	0.10	4.64
	327.0	2.11	257.13	327.0	-0.5	-4.7	4.7	1.38	1.34	-14.72
	443.0	3.17	245.70	442.8	-2.3	-9.7	9.7	1.02	0.91	-9.85
	529.0	3.52	246.76	528.7	-4.3	-14.3	14.4	0.41	0.41	1.23
	614.0	3.87	249.92	613.5	-6.3	-19.4	19.5	0.48	0.41	3.72
	700.0	3.69	244.47	699.3	-8.5	-24.6	24.8	0.47	-0.21	-6.34
	785.0	4.04	241.66	784.1	-11.1	-29.7	29.9	0.47	0.41	-3.31
	870.0	2.73	237.27	869.0	-13.6	-34.0	34.3	1.57	-1.54	-5.16

<b>Company:</b>	Crestone Peak Resources	<b>Local Co-ordinate Reference:</b>	Well Grande 4-65 20-19 4AH
<b>Project:</b>	SEC.21-T4S-R65W	<b>TVD Reference:</b>	WELL @ 5647.1ft (Original Well Elev)
<b>Site:</b>	Grande 6-65 20-19 3AH South Pad Sec.21-T4S-R65W	<b>MD Reference:</b>	WELL @ 5647.1ft (Original Well Elev)
<b>Well:</b>	Grande 4-65 20-19 4AH	<b>North Reference:</b>	True
<b>Wellbore:</b>	Grande 4-65 20-19 4AH Wellbore #1	<b>Survey Calculation Method:</b>	Minimum Curvature
<b>Design:</b>	Grande 4-65 20-19 4AH Wellbore #1	<b>Database:</b>	US_EDM

Survey									
Measured Depth (ft)	Inclination (°)	Azimuth (°)	Vertical Depth (ft)	+N/-S (ft)	+E/-W (ft)	Vertical Section (ft)	Dogleg Rate (°/100usft)	Build Rate (°/100usft)	Turn Rate (°/100usft)
955.0	2.81	222.85	953.9	-16.2	-37.1	37.5	0.82	0.09	-16.96
1,041.0	2.11	227.95	1,039.8	-18.8	-39.8	40.1	0.85	-0.81	5.93
1,126.0	1.76	231.99	1,124.7	-20.7	-41.9	42.4	0.44	-0.41	4.75
1,211.0	1.49	211.25	1,209.7	-22.4	-43.5	44.0	0.76	-0.32	-24.40
1,297.0	1.49	200.53	1,295.7	-24.4	-44.5	45.0	0.32	0.00	-12.47
1,382.0	1.85	227.60	1,380.7	-26.4	-45.9	46.5	1.01	0.42	31.85
1,467.0	2.02	233.40	1,465.6	-28.2	-48.1	48.7	0.30	0.20	6.82
1,552.0	0.97	213.71	1,550.6	-29.7	-49.7	50.3	1.36	-1.24	-23.16
1,638.0	0.79	213.19	1,636.6	-30.8	-50.5	51.1	0.21	-0.21	-0.60
1,723.0	1.06	221.27	1,721.6	-31.9	-51.3	52.0	0.35	0.32	9.51
1,808.0	1.32	229.36	1,806.5	-33.1	-52.6	53.2	0.36	0.31	9.52
1,894.0	0.79	219.34	1,892.5	-34.2	-53.7	54.4	0.65	-0.62	-11.65
1,979.0	0.79	229.36	1,977.5	-35.0	-54.5	55.2	0.16	0.00	11.79
2,064.0	0.97	217.23	2,062.5	-36.0	-55.4	56.1	0.30	0.21	-14.27
2,150.0	0.97	211.78	2,148.5	-37.2	-56.2	57.0	0.11	0.00	-6.34
2,247.0	1.14	202.64	2,245.5	-38.8	-57.0	57.8	0.25	0.18	-9.42
2,311.0	1.14	202.64	2,309.5	-40.0	-57.5	58.3	0.00	0.00	0.00

Checked By: \_\_\_\_\_ Approved By: \_\_\_\_\_ Date: \_\_\_\_\_