

UNGRADED ELEVATION: 8308.4'  
 FINAL ELEVATION: 8300.9'  
 PROPOSED AREA OF DISTURBANCE: 6.7± ACRES  
 DRAINS TO CONN CREEK

CC 697-06A PAD	
SLOT	WELL
A	CC 697-16-11B2
C	CC 697-16-13A2
E	CC 697-16-15B
G	CC 697-16-21B
I	CC 697-16-15C
K	CC 697-16-23A
M	CC 697-16-23A
O	CC 697-16-23B
Q	CC 697-16-23B
S	OPEN
U	OPEN
B	OPEN
D	OPEN
F	OPEN
H	OPEN
J	OPEN
L	OPEN
N	OPEN
P	OPEN
R	OPEN
T	OPEN
V	OPEN

**BEFORE DIGGING  
 CALL FOR  
 UTILITY LINE LOCATION**

NOTE: THE EARTH QUANTITIES ON  
 THIS DRAWING ARE ESTIMATED AND  
 THE USE OF SAID QUANTITIES IS AT  
 THE RESPONSIBILITY OF THE USER.



**RIFFIN & ASSOCIATES, INC.**  
 1414 ELK ST., ROCK SPRINGS, WY 82901

(307) 362-5028

DRAWN: 2/17/11 - DEH

SCALE: 1" = 100'

REVISED: N/A

DRG JOB No. 11771

EXHIBIT 2

CC 697-16-28 ANNEX

CONSTRUCTION LAYOUT DRAWING 1 OF 5

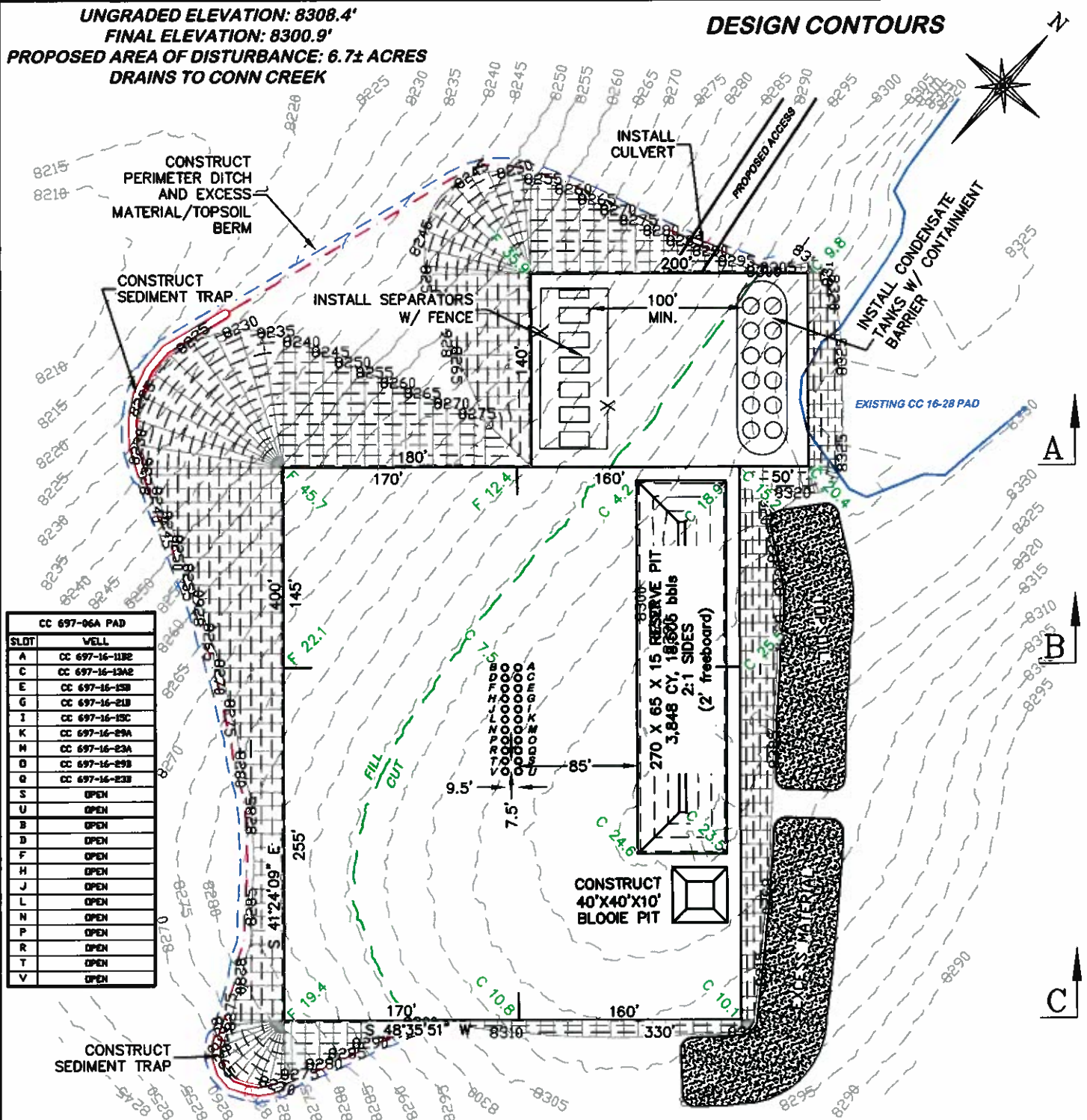
**OXY USA WTP LP**  
**CASCADE CREEK 697-16-11B2, 13A2, 15B, 15C, 21B, 23A, 23B,**  
**29A, & 29B SENW SECTION 16, T. 6 S., R. 97 W., 6th P.M.,**  
**GARFIELD COUNTY, COLORADO**

ESTIMATED EARTHWORK

ITEM	CUT	FILL	TOPSOIL	EXCESS
PAD	59,073 CY	56,094 CY	2,963 CY	16 CY
PIT	5,167 CY			5,167 CY
TOTALS	64,240 CY	56,094 CY	2,963 CY	5,183 CY

UNGRADED ELEVATION: 8308.4'  
 FINAL ELEVATION: 8300.9'  
 PROPOSED AREA OF DISTURBANCE: 6.7± ACRES  
 DRAINS TO CONN CREEK

## DESIGN CONTOURS



### BEFORE DIGGING CALL FOR UTILITY LINE LOCATION

NOTE: THE EARTH QUANTITIES ON  
 THIS DRAWING ARE ESTIMATED AND  
 THE USE OF SAID QUANTITIES IS AT  
 THE RESPONSIBILITY OF THE USER.

CC 697-16-28 ANNEX

100 0 100  
 SCALE FEET



**RIFFIN & ASSOCIATES, INC.**  
 1414 ELK ST., ROCK SPRINGS, WY 82901

(307) 382-6028

DRAWN: 2/17/11 - DEH

SCALE: 1" = 100'

REVISED: N/A

DRG JOB No. 11771

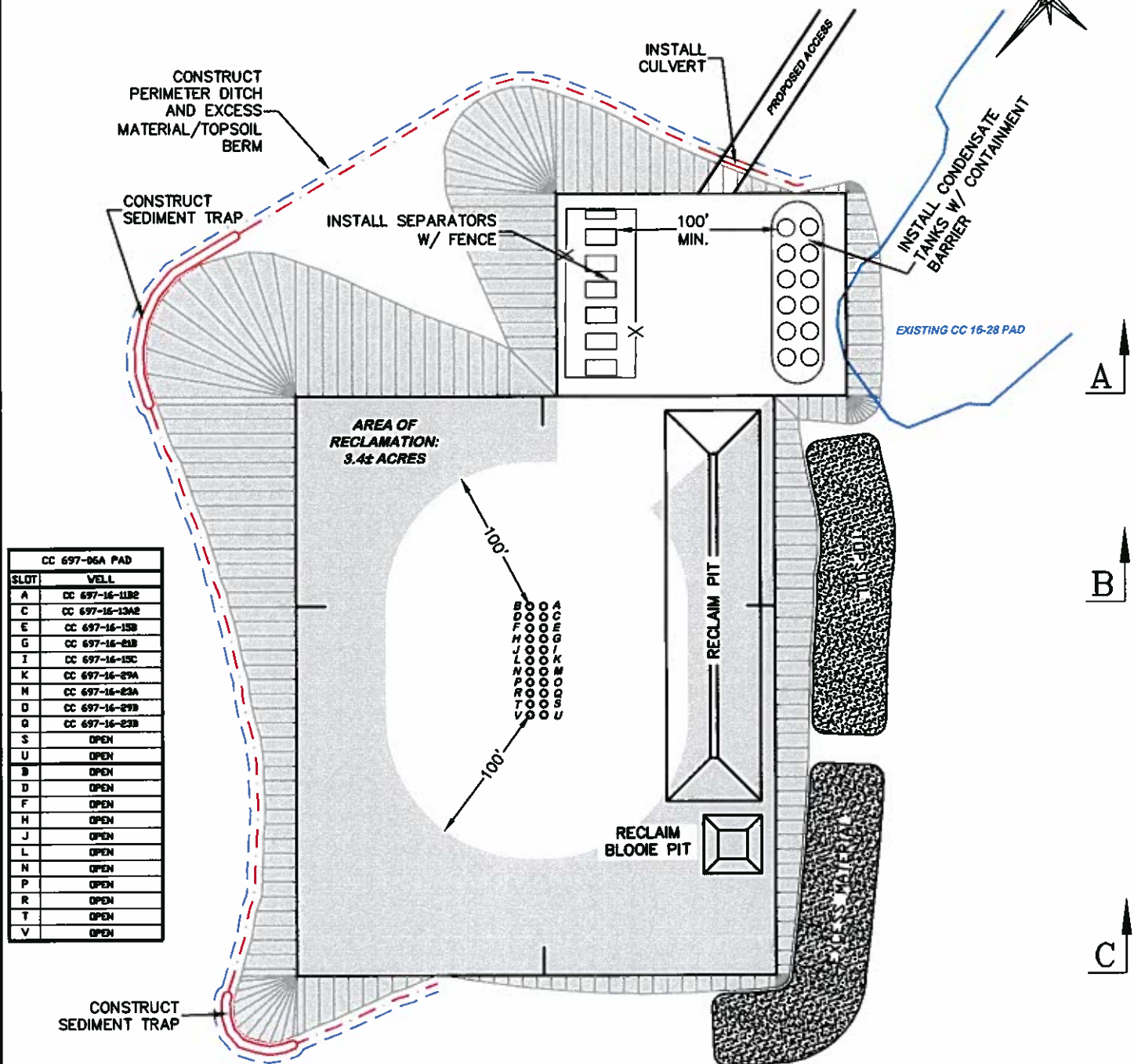
EXHIBIT 2B

### CONSTRUCTION LAYOUT DRAWING 3 OF 5

**DESIGN CONTOURS**  
**OXY USA WTP LP**  
**CASCADE CREEK 697-16-11B2, 13A2, 15B, 15C, 21B, 23A, 23B,**  
**29A, & 29B SENW SECTION 16, T. 6 S., R. 97 W., 6th P.M.,**  
**GARFIELD COUNTY, COLORADO**



## PROPOSED RECLAMATION



**BEFORE DIGGING  
CALL FOR  
UTILITY LINE LOCATION**

NOTE: THE EARTH QUANTITIES ON THIS DRAWING ARE ESTIMATED AND THE USE OF SAID QUANTITIES IS AT THE RESPONSIBILITY OF THE USER.

**CC 697-16-28 ANNEX**



**RIFFIN & ASSOCIATES, INC.**  
1414 ELK ST., ROCK SPRINGS, WY 82901

**CONSTRUCTION LAYOUT DRAWING 4 OF 5**

**PROPOSED RECLAMATION  
OXY USA WTP LP  
CASCADE CREEK 697-16-11B2, 13A2, 15B, 15C, 21B, 23A, 23B,  
29A, & 29B SENW SECTION 16, T. 6 S., R. 97 W., 6th P.M.,  
GARFIELD COUNTY, COLORADO**

**DRAWN: 2/17/11 - DEH**

**SCALE: 1" = 100'**

**REVISED: N/A**

**DRG JOB No. 11771****EXHIBIT 2C**