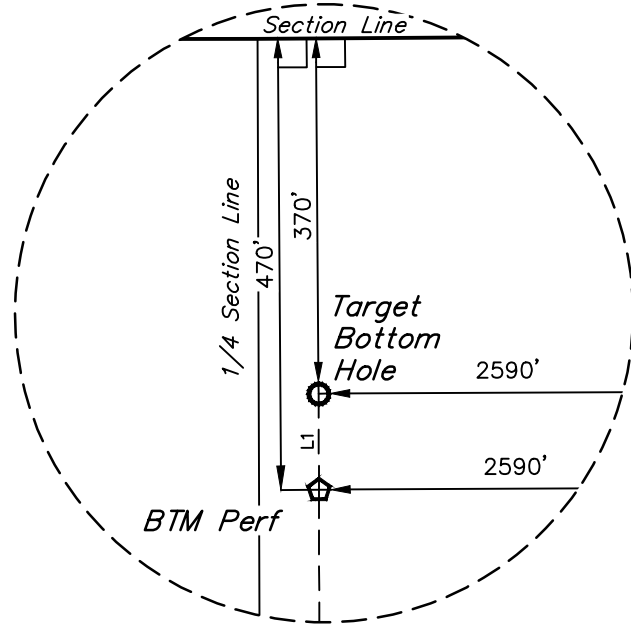


LEGEND:

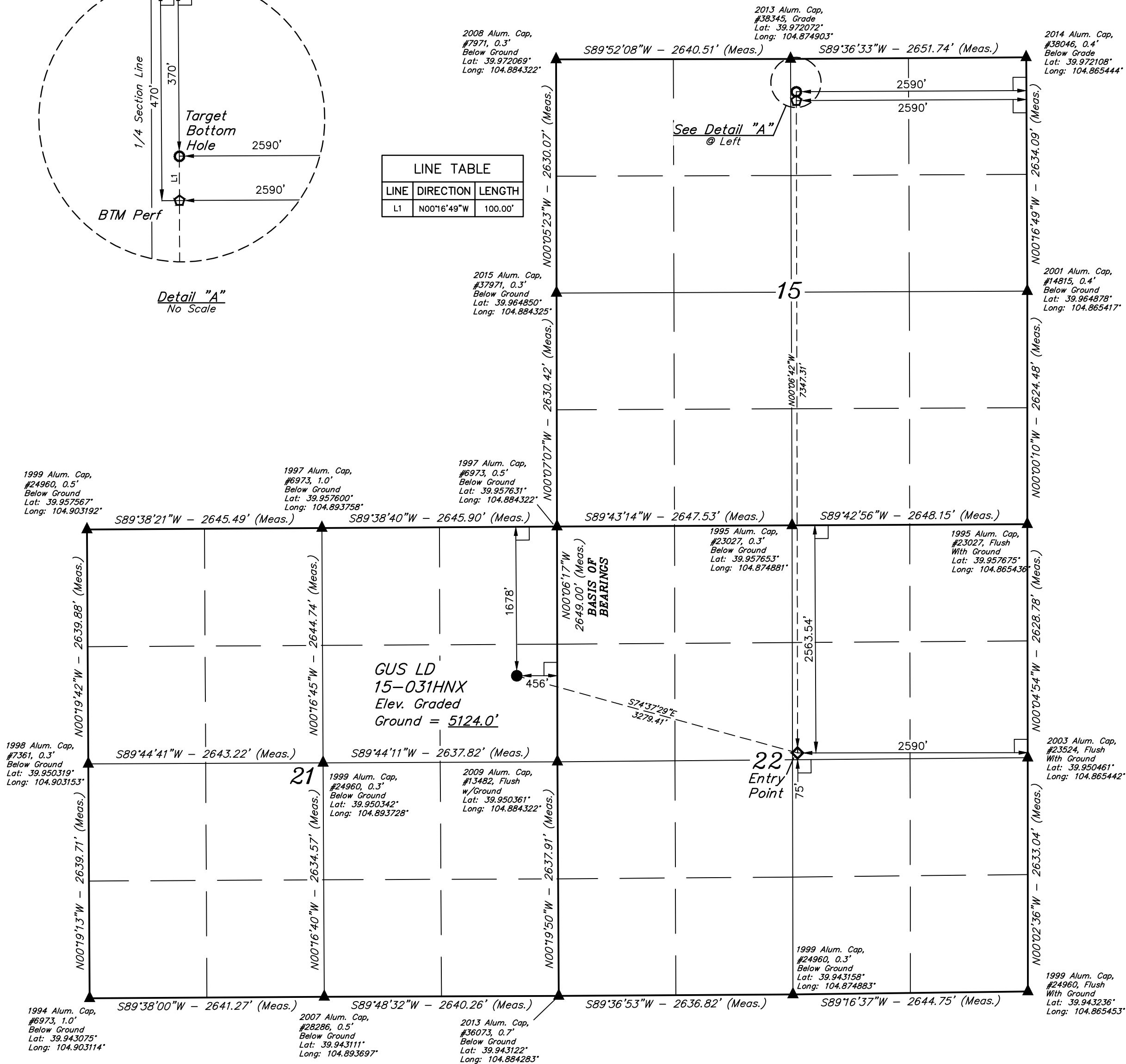
- = 90° SYMBOL
● = PROPOSED WELLHEAD.
◆ = ENTRY POINT.
○ = BTM PERF.
○ = BOTTOM HOLE LOCATION.
▲ = SECTION CORNERS LOCATED. (NAD 83)
△ = SECTION CORNERS RE-ESTABLISHED. (Not Set on Ground.) (NAD 83)

T1S, R67W, 6th P.M.



Detail "A"
No Scale

LINE TABLE		
LINE	DIRECTION	LENGTH
L1	N00°16'49"W	100.00'



PDOP = 1.2



NAD 83 (SURFACE LOCATION)	NAD 83 (ENTRY POINT)	NAD 83 (BTM PERF)	NAD 83 (BOTTOM HOLE LOCATION)
LATITUDE = 39°57'10.88\" (39.953021)	LATITUDE = 39°57'02.23\" (39.950619)	LATITUDE = 39°58'14.82\" (39.970783)	LATITUDE = 39°58'15.81\" (39.971058)
LONGITUDE = 104°53'09.41\" (104.885947)	LONGITUDE = 104°52'28.84\" (104.874677)	LONGITUDE = 104°52'28.84\" (104.874678)	LONGITUDE = 104°52'28.84\" (104.874679)
NAD 27 (SURFACE LOCATION)	NAD 27 (ENTRY POINT)	NAD 27 (BTM PERF)	NAD 27 (BOTTOM HOLE LOCATION)
LATITUDE = 39°57'10.93\" (39.953037)	LATITUDE = 39°57'02.28\" (39.950634)	LATITUDE = 39°58'14.88\" (39.970799)	LATITUDE = 39°58'15.86\" (39.971073)
LONGITUDE = 104°53'07.50\" (104.885415)	LONGITUDE = 104°52'26.93\" (104.874146)	LONGITUDE = 104°52'26.93\" (104.874147)	LONGITUDE = 104°52'26.93\" (104.874148)

BASIS OF ELEVATION
BENCHMARK JR 53 5026 LOCATED IN THE SW 1/4 SE 1/4 OF SECTION 18, T1N, R68W, 6th P.M., TAKEN FROM 1988 PUBLISHED DATUM BY THE UNITED STATES DEPARTMENT OF THE INTERIOR, GEOLOGICAL SURVEY AS BEING 5028 FEET.



UELS, LLC
Corporate Office * 85 South 200 East
Vernal, UT 84078 * (435) 789-1017



CERTIFICATE OF REGISTRATION
THIS IS TO CERTIFY THAT THE ABOVE SIGNED AND SEALED NOTES OF ACTUAL SURVEYS MADE BY THE SURVEYOR AND THAT THE SAME ARE TRUE AND CORRECT TO THE BEST OF HIS KNOWLEDGE AND BELIEF.

REGISTERED LAND SURVEYOR
REGISTRATION NO. 28285
STATE OF COLORADO

REV: 10 09-28-21 J.J. (SHL MOVE)

GREAT WESTERN OPERATING COMPANY

GUS LD 15-031HNX
SE 1/4 NE 1/4, SECTION 21, T1S, R67W, 6th P.M.
ADAMS COUNTY, COLORADO

SURVEYED BY	GREG WEIMER, D.D.	06-12-18	SCALE
DRAWN BY	K.B.	01-23-17	1" = 1000'

WELL LOCATION PLAT