

VDL CCL GAMMA RAY
CEMENT BOND LOG

Company CHEVRON
Well MARIE D04-13
Field WATTENBERG
County WELD State CO

Location: API #: 05-123-15142
LAT 40.24901605
LON -104.56240000
SEC 4 TWP 3 RGE W
Permanent Datum
Log Measured From
Drilling Measured From
Elevation 4,729'
Other Services
Elevation
K.B. 10
D.F. 9
G.L. 4,729'

Company CHEVRON
Well MARIE D04-13
Field WATTENBERG
County WELD
State CO

Date	7-22-21
Run Number	1
Depth Driller	7066'
Depth Logger	4300'
Bottom Logged Interval	4300'
Top Log Interval	1800'
Open Hole Size	8 5/8"
Type Fluid	H2O
Density / Viscosity	N/A
Max. Recorded Temp.	N/A
Estimated Cement Top	N/A
Time Well Ready	11:20
Time Logger on Bottom	12:00
Equipment Number	483
Location	EATON
Recorded By	A.MEYER
Witnessed By	EDGAR CHAVEZ

Borehole Record				Tubing Record			
Run Number	Bit	From	To	Size	Weight	From	To

Casing Record	Size	Wgt/Ft	Top	Bottom
Surface String	8 5/8"	24.00		
Prot. String				
Production String				
Liner				

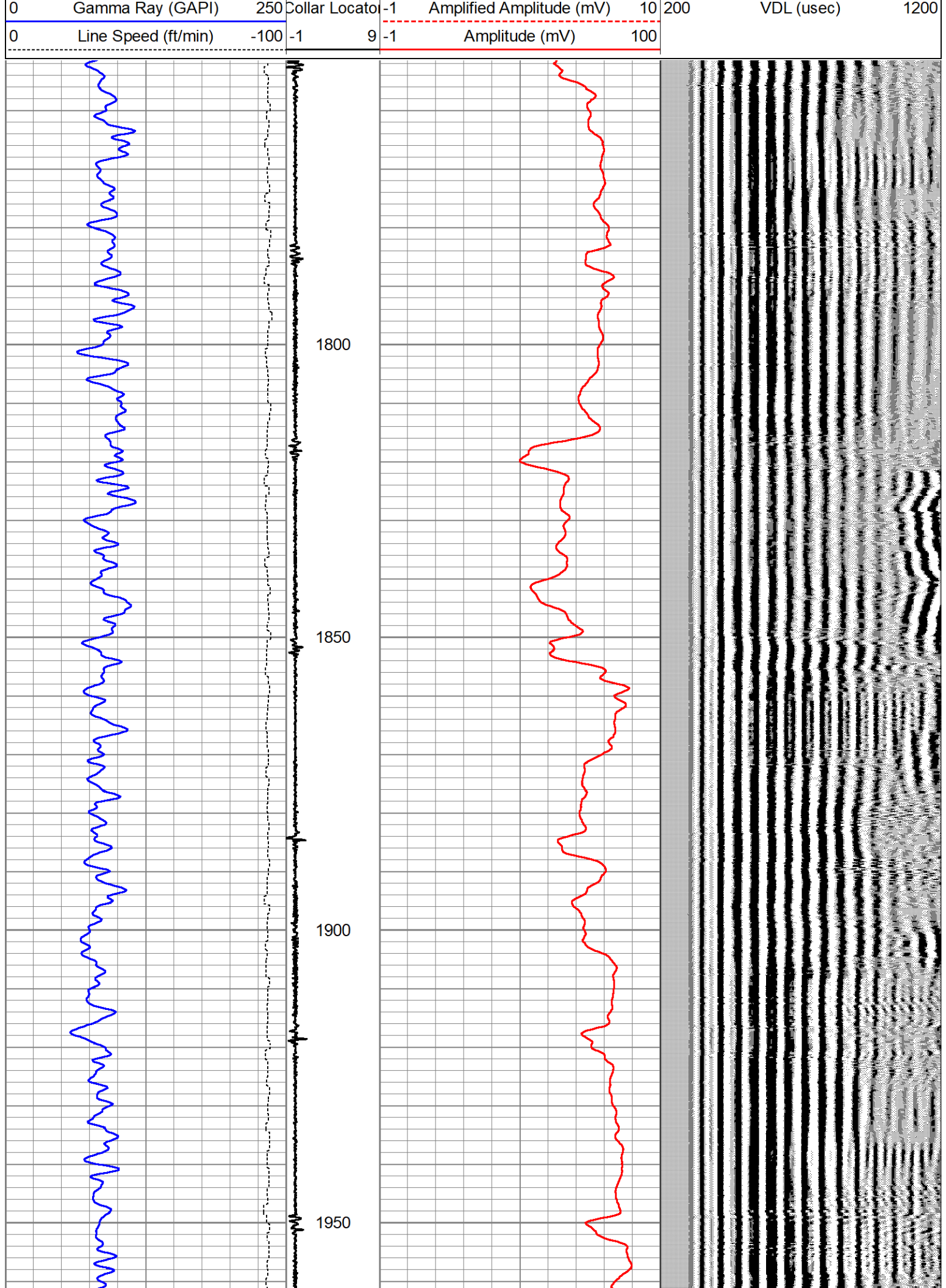
<<< Fold Here >>>

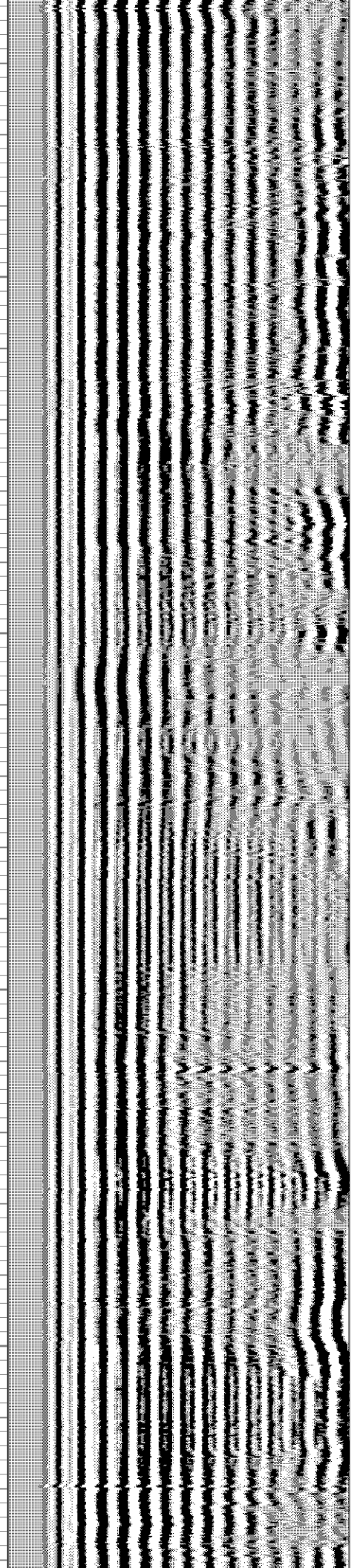
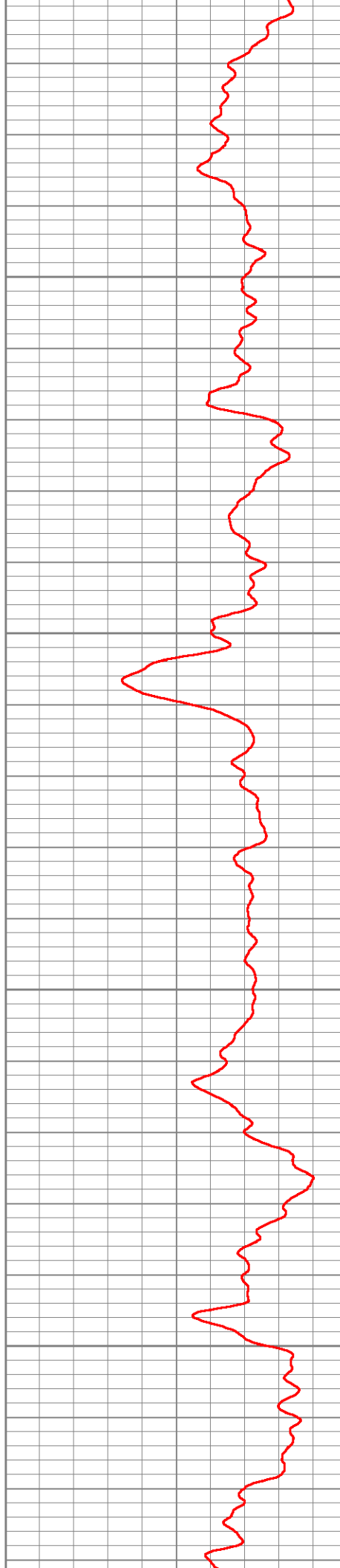
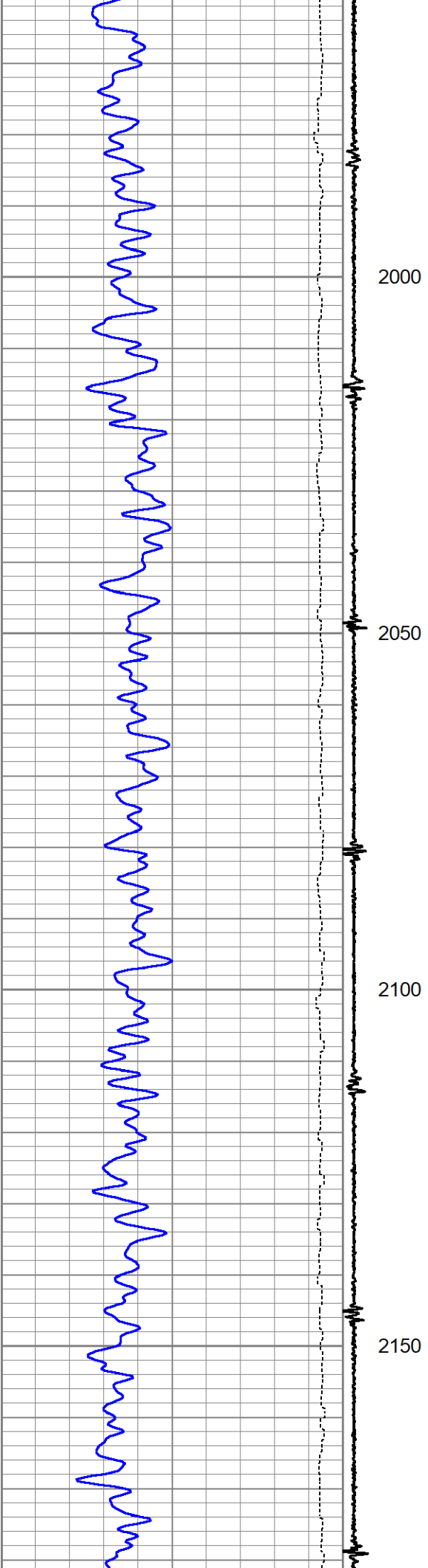
All interpretations are opinions based on inferences from electrical or other measurements and we cannot and do not guarantee the accuracy or correctness of any interpretation, and we shall not, except in the case of gross or willful negligence on our part, be liable or responsible for any loss, costs, damages, or expenses incurred or sustained by anyone resulting from any interpretation made by any of our officers, agents or employees. These interpretations are also subject to our general terms and conditions set out in our current Price Schedule.

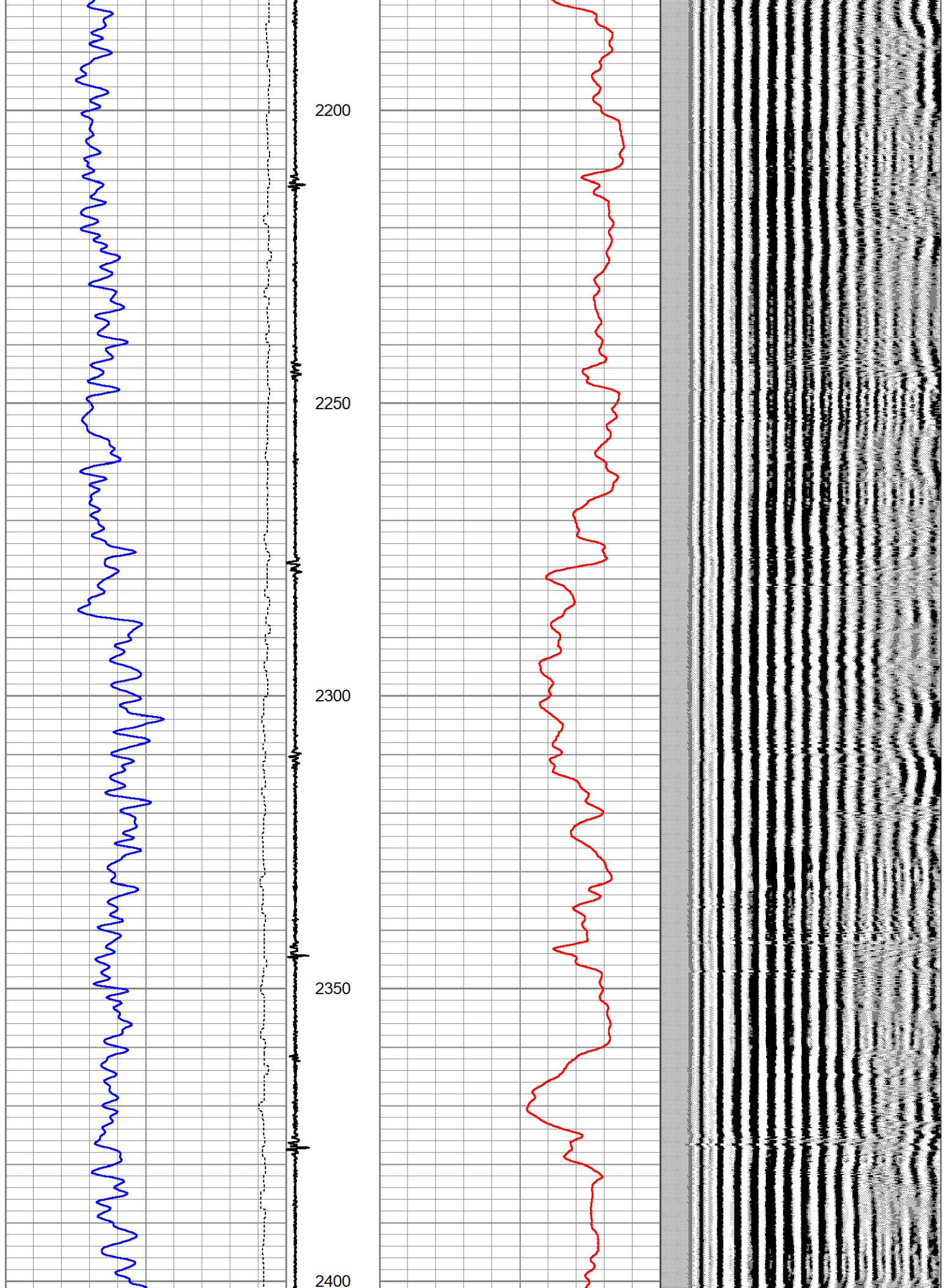
Comments

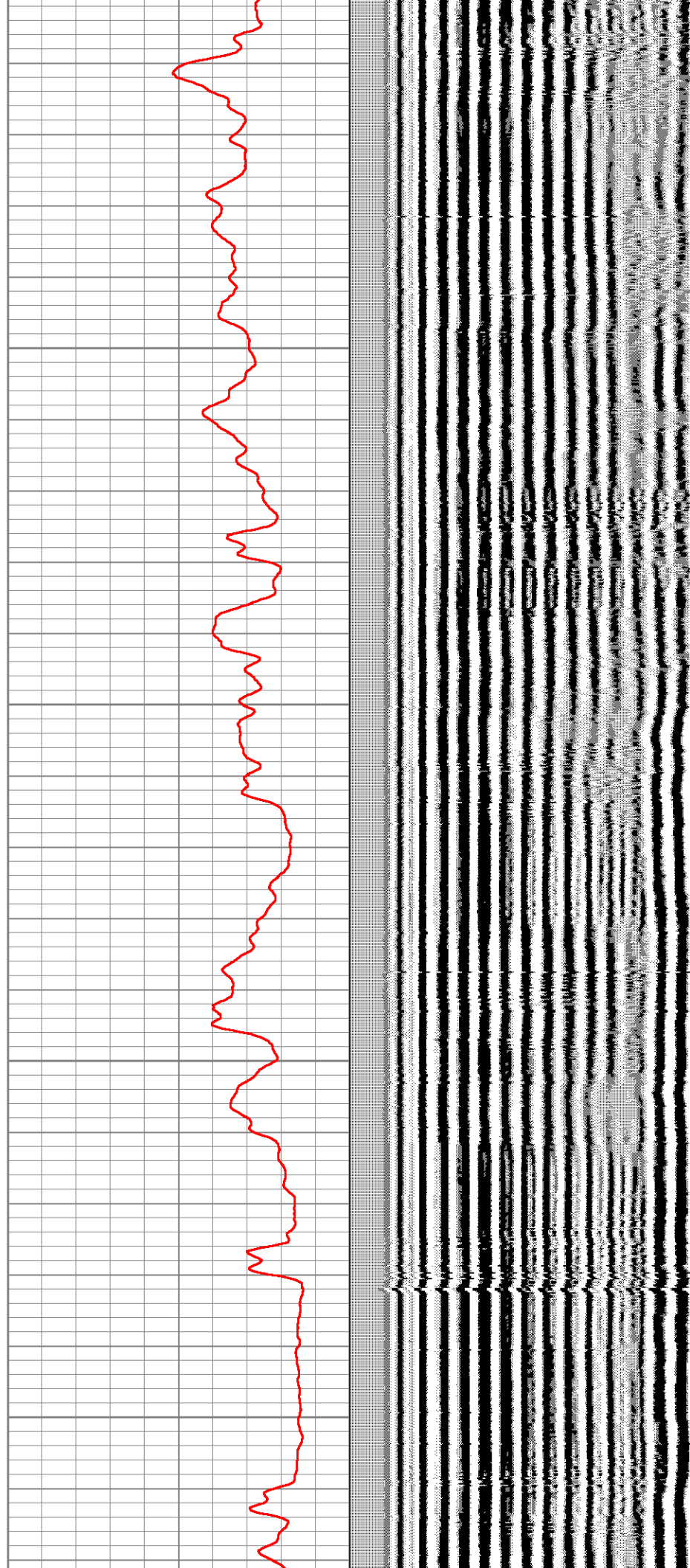
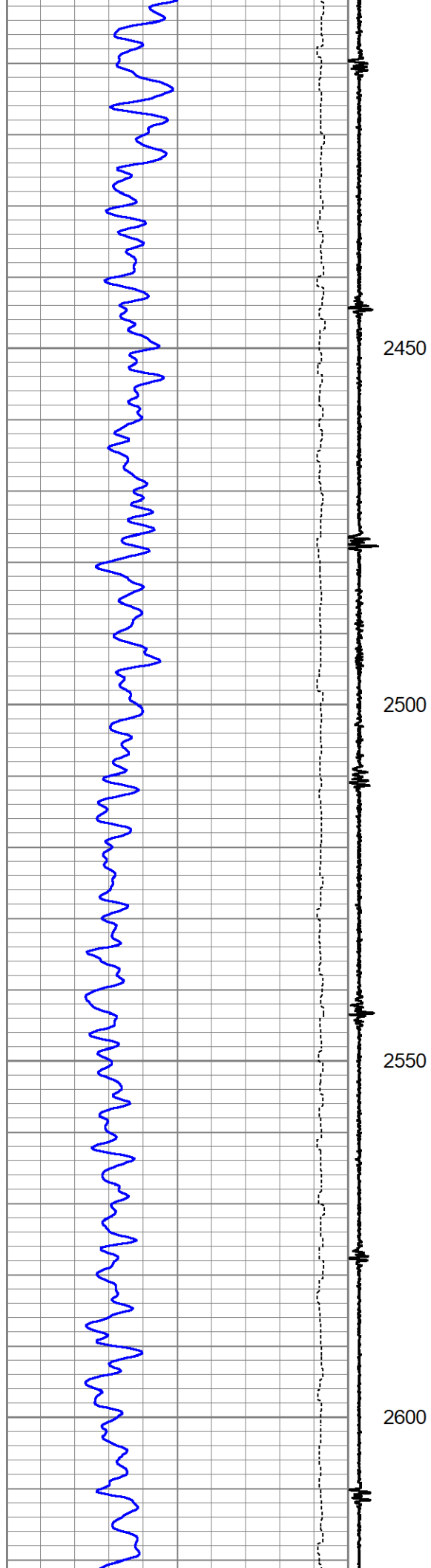
LOG RAN PER CUSTOMER REQUEST
DEPTH REFERMCD TO KB
ZERO PSI SURFACE INDUCED PRESSURE

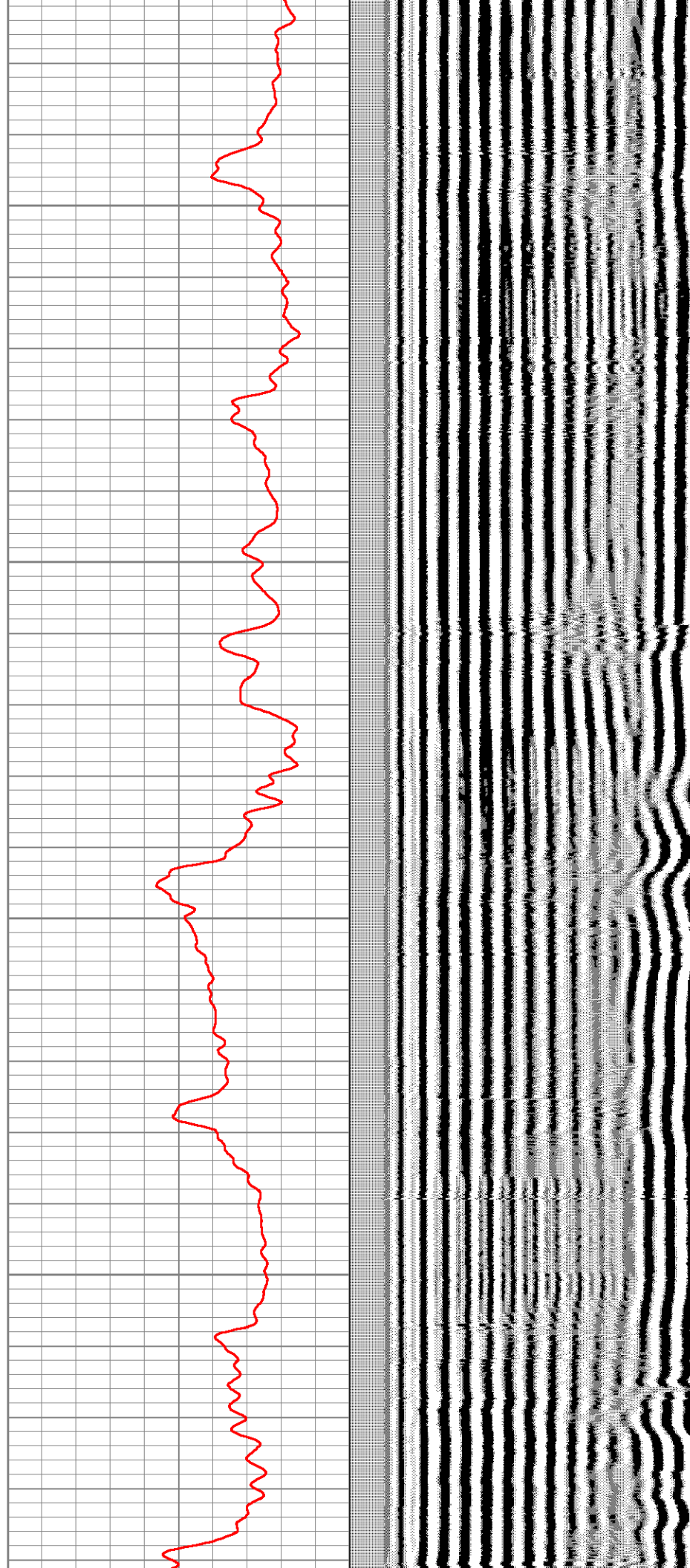
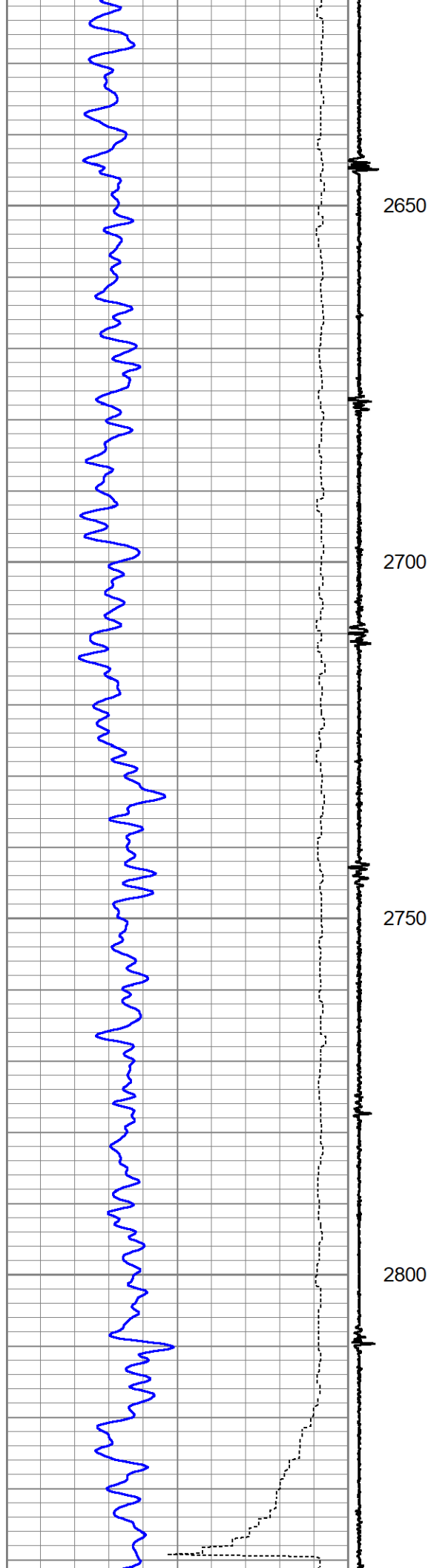
MAIN PASS 4300' TO 1800'
THANK YOU FOR USING A-PLUS WELL SOLUTIONS

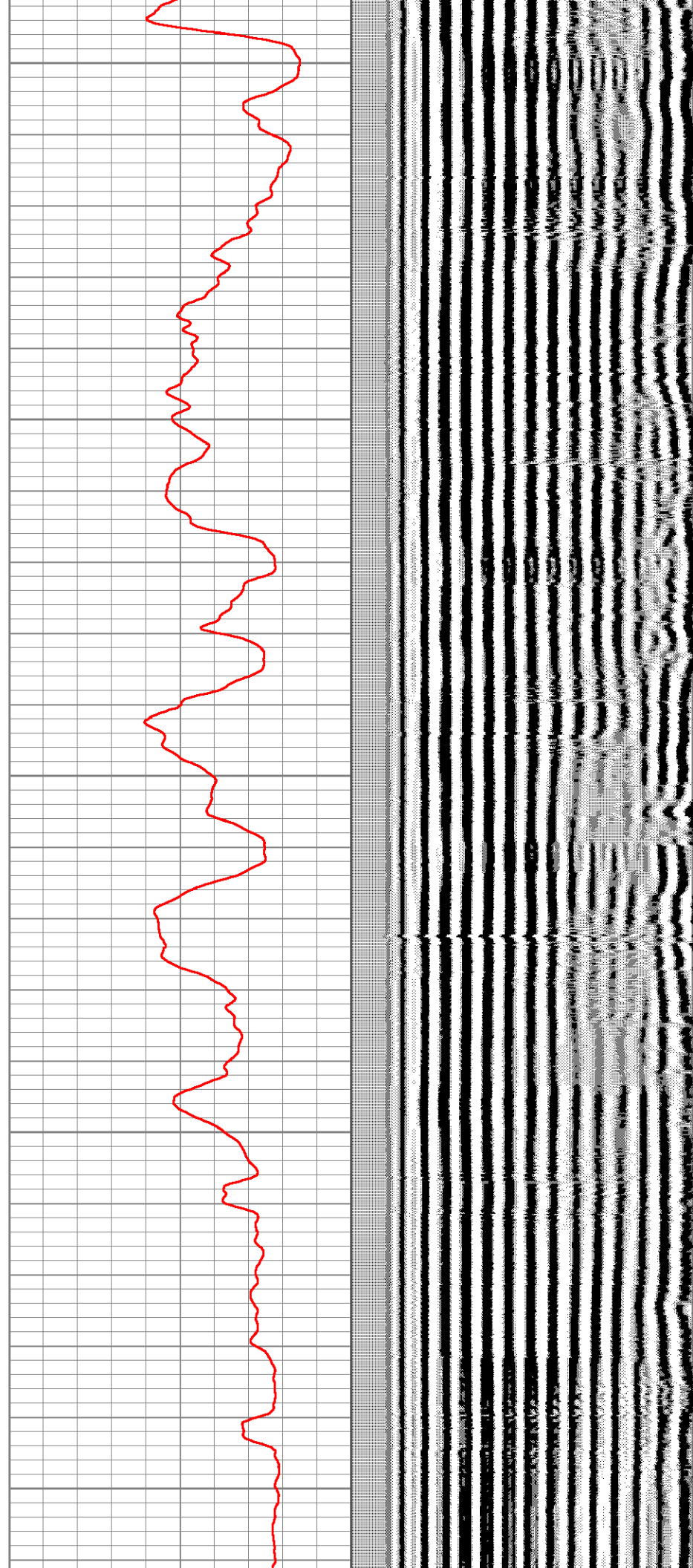
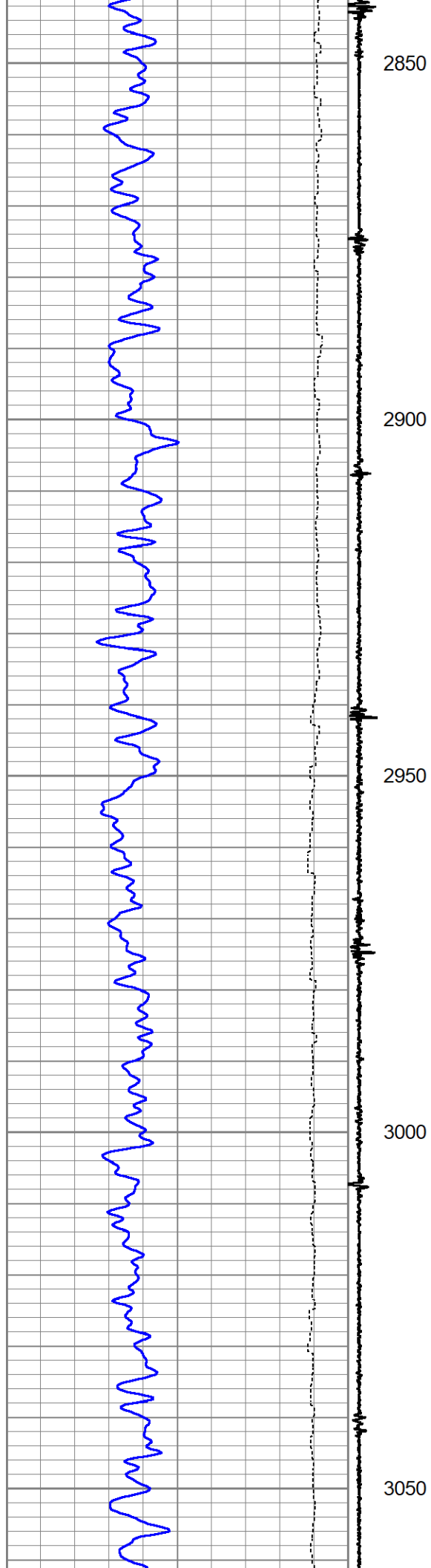


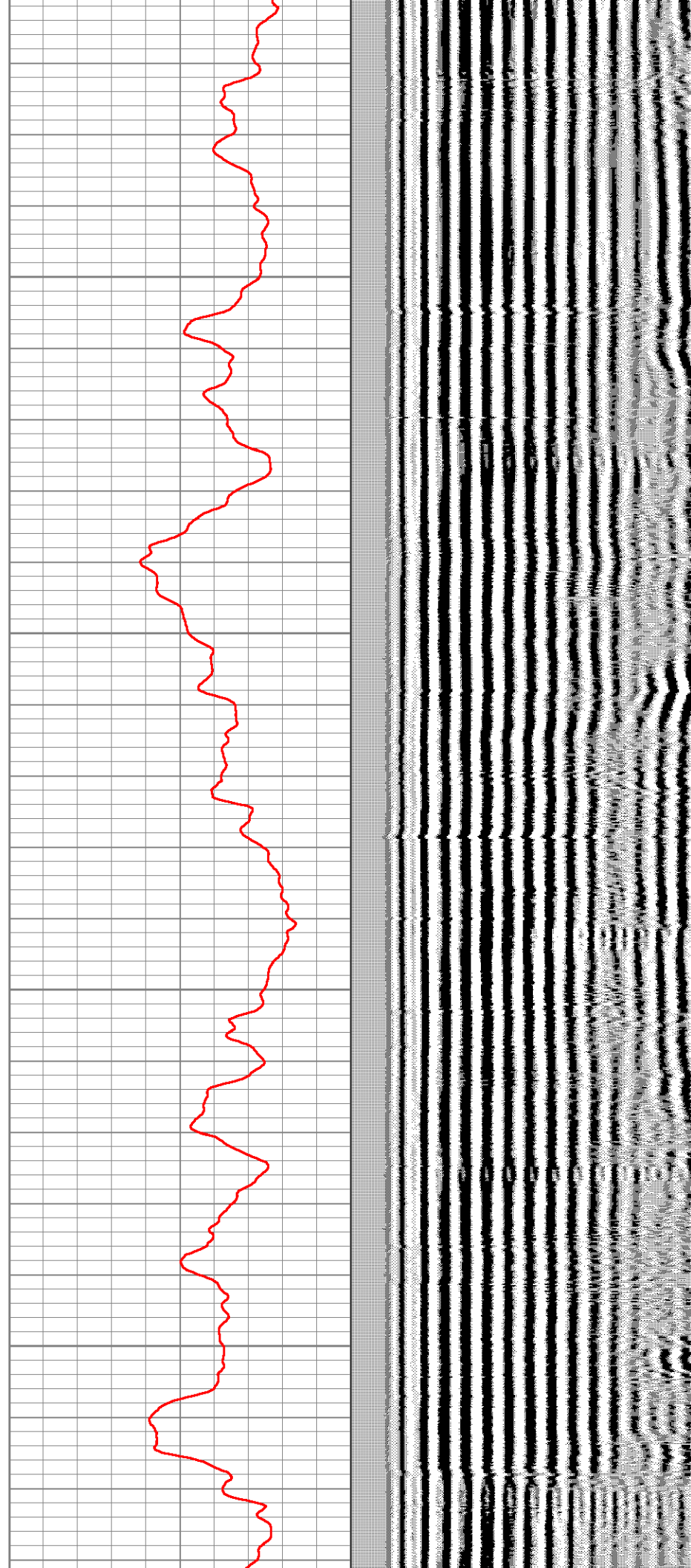
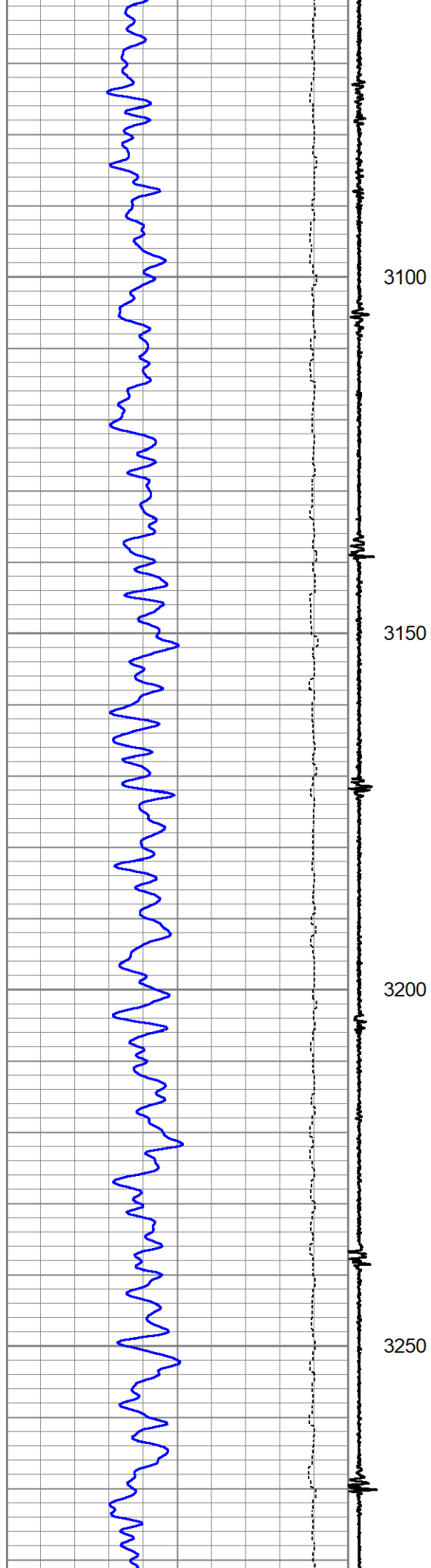


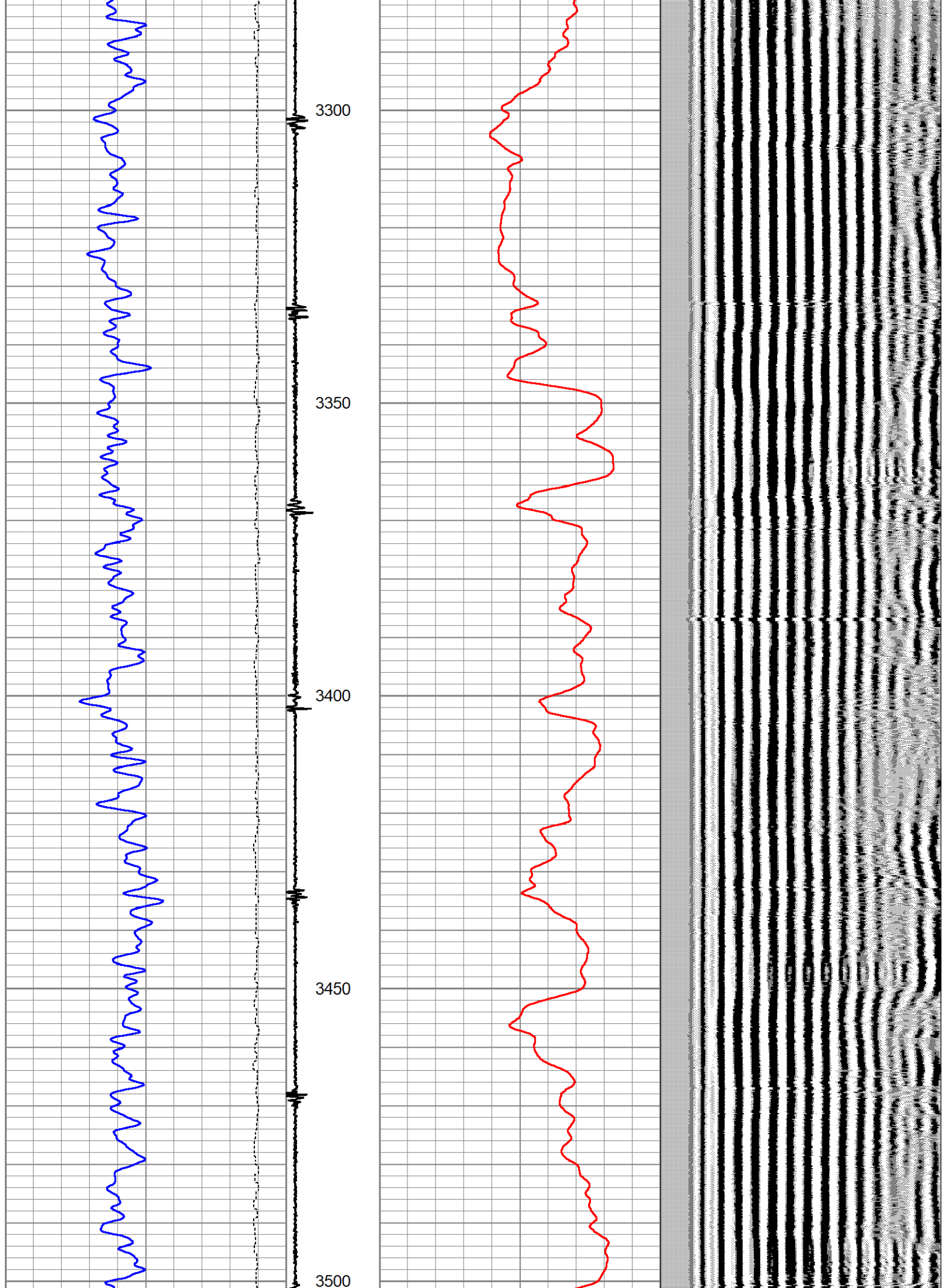


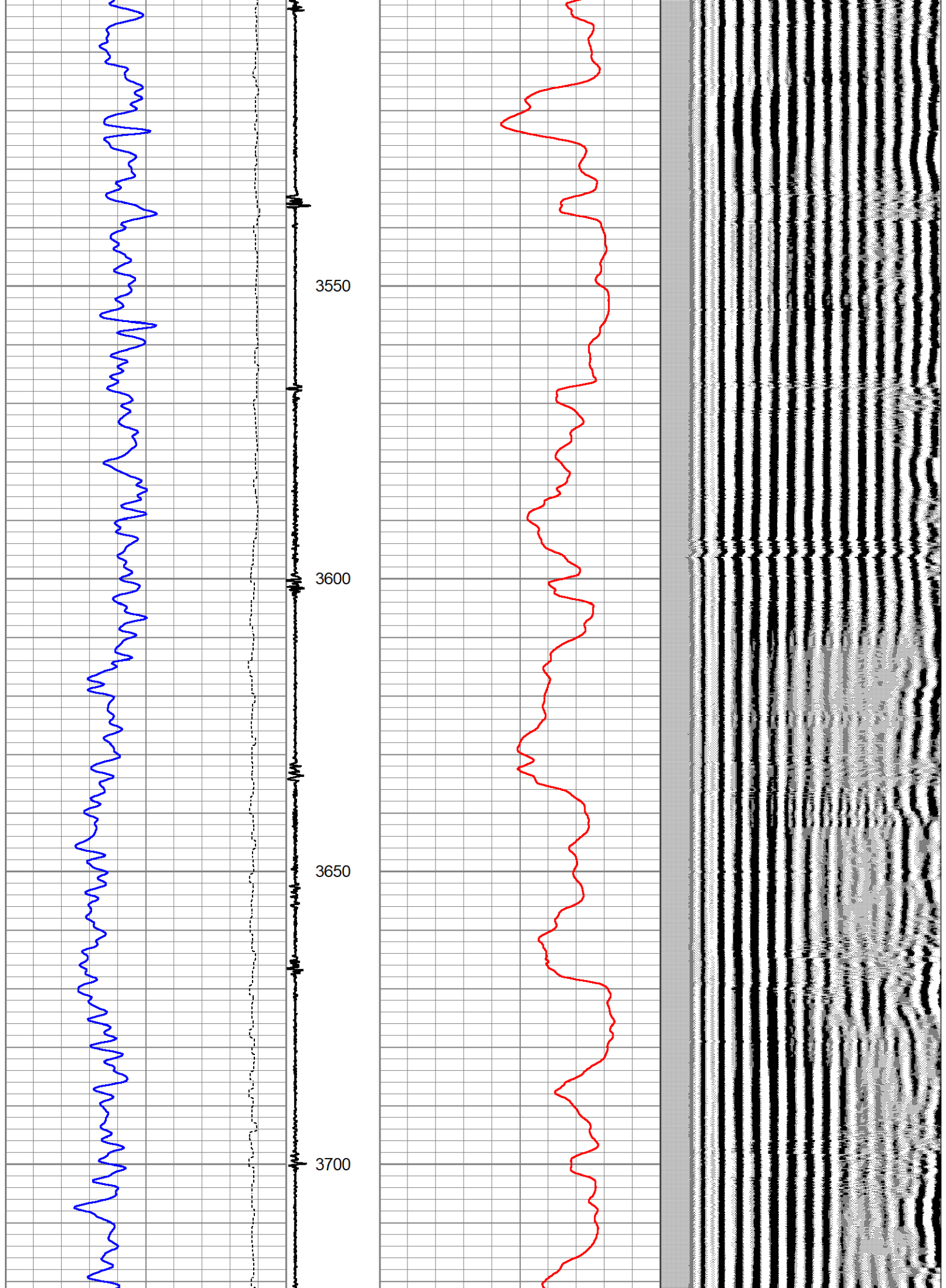


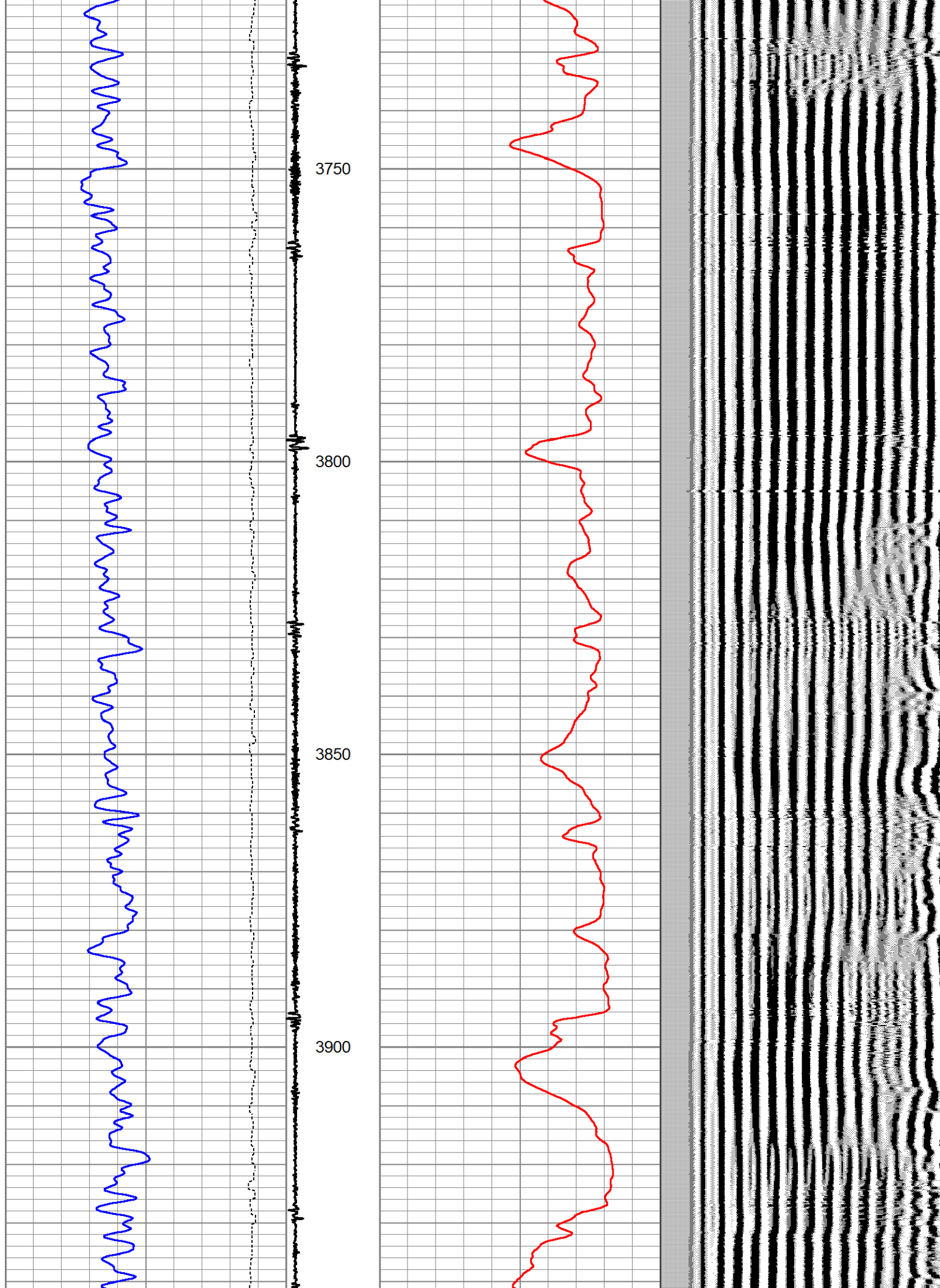


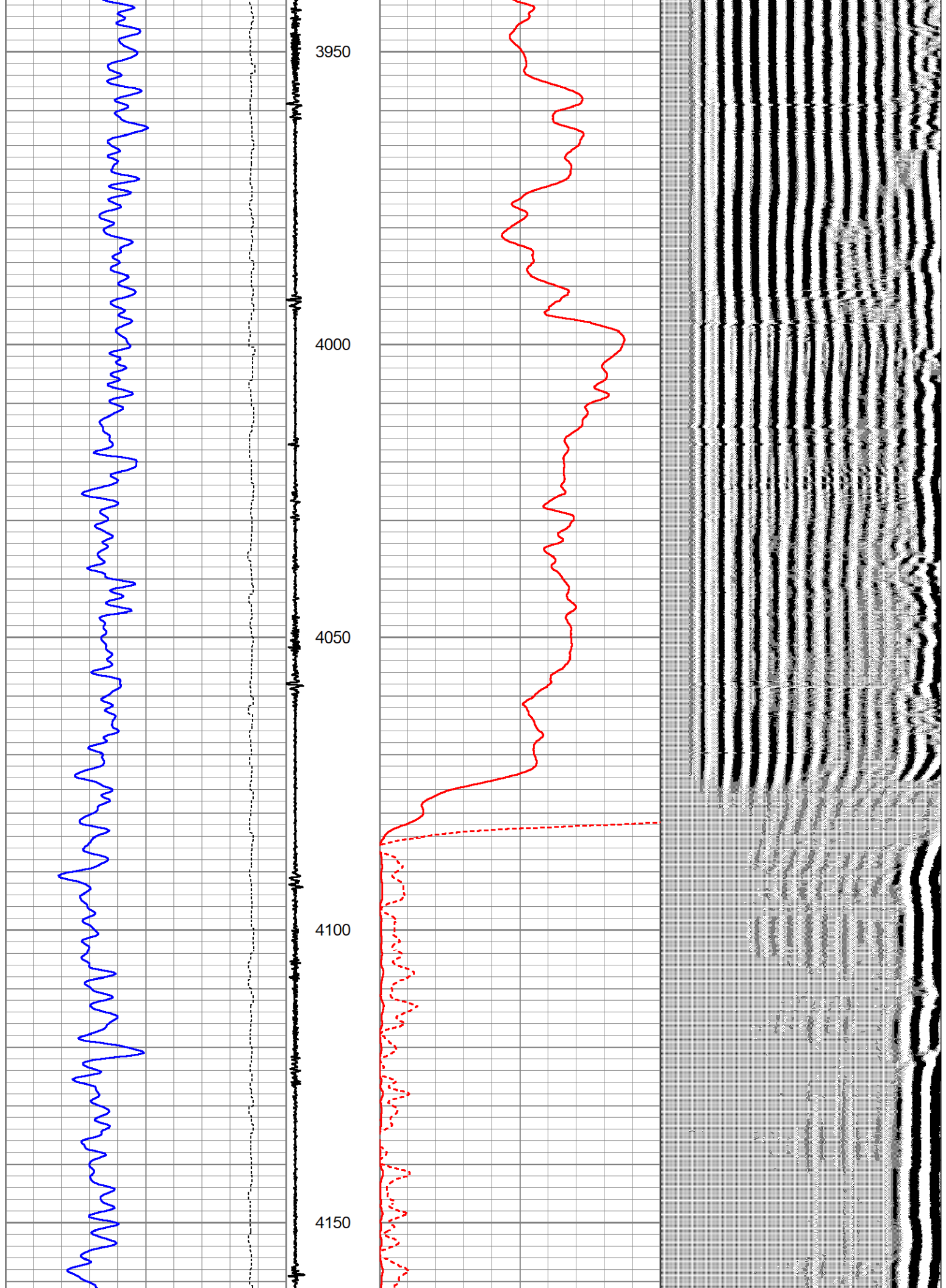


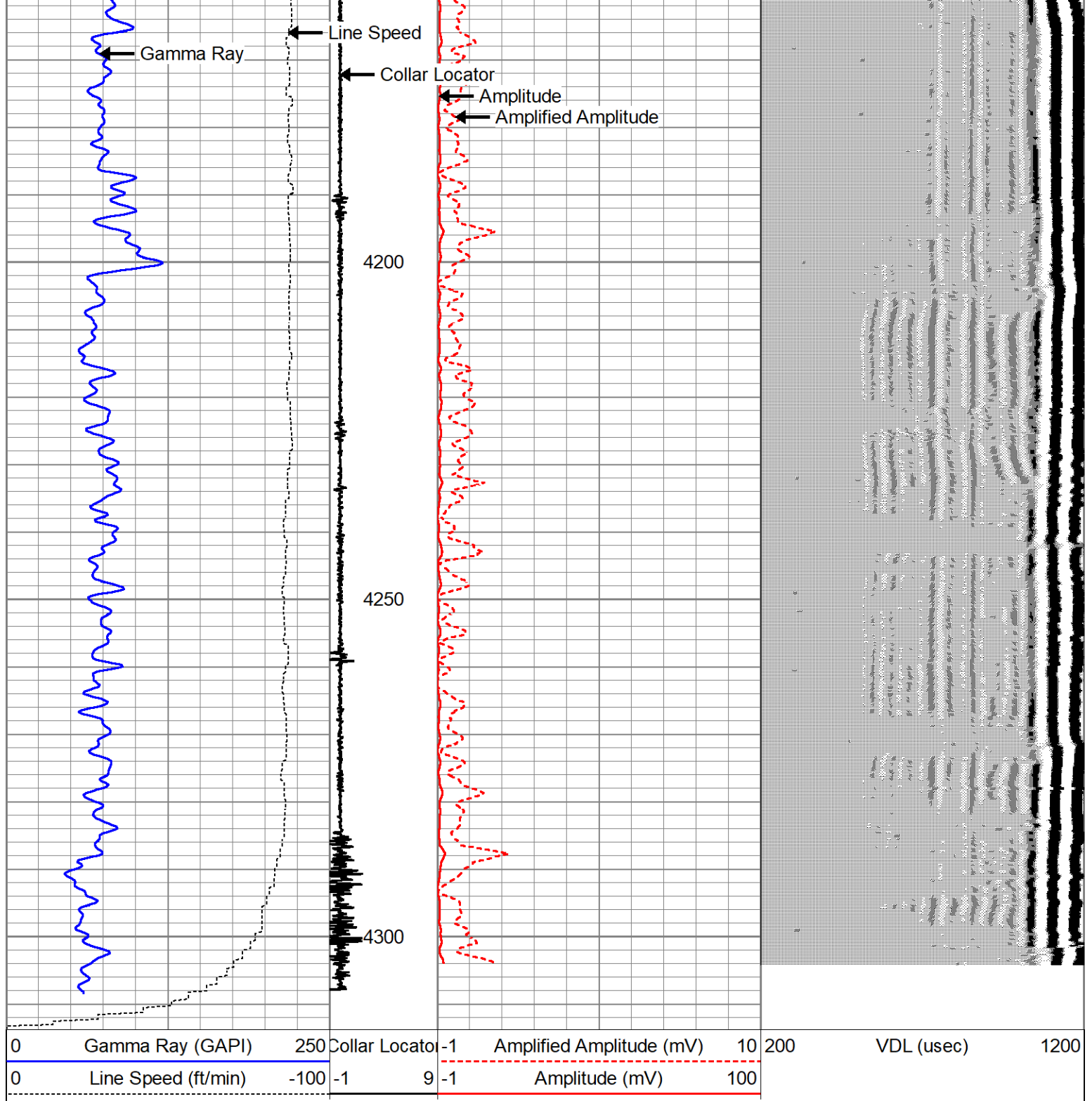












Calibration Report			
Database File	noble_maried04-13_7-22-21_cbl.db		
Dataset Pathname	pass7		
Dataset Creation	Thu Jul 22 12:38:24 2021		
Gamma Ray Calibration Report			
Serial Number:	275		
Tool Model:	Probe		
Performed:	Thu Aug 7 08:00:19 2008		
Calibrator Value:	100.0	GAPI	
Background Reading:	35.0	cps	
Calibrator Reading:	160.0	cps	

Sensitivity:

1.0000

GAPI/cps

Segmented Cement Bond Log Calibration Report

Serial Number:

275

Tool Model:

Probe

Calibration Casing Diameter:

3.500

in

Calibration Depth:

2708.108

ft

Master Calibration, performed Thu Jul 22 12:30:27 2021:

	Raw (v)		Calibrated (mv)		Results	
	Zero	Cal	Zero	Cal	Gain	Offset
3'	-0.000	0.984	1.000	94.517	95.004	1.008
CAL						
5'	0.012	0.597	1.000	94.517	160.019	-0.947
SUM						
S1						
S2						
S3						
S4						
S5						
S6						
S7						
S8						

Internal Reference Calibration, performed (Not Performed):

	Raw (v)		Calibrated (v)		Results	
	Zero	Cal	Zero	Cal	Gain	Offset
CAL						

Air Zero Calibration, performed Thu May 28 09:57:00 2020:

	Raw (v)		Calibrated (v)		Results	
	Zero		Zero		Offset	
3'	0.000		0.000		0.000	
5'	0.000		0.000		0.000	
SUM						
S1						
S2						
S3						
S4						
S5						
S6						
S7						
S8						

Log Variables

DatabaseC:\ProgramData\Warrior\Data\noble_maried04-13_7-22-21_cbl.db



Dataset field/well/run1/pass7/_vars_

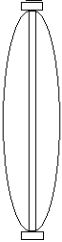
Top - Bottom

BOREID	BOTTEMP	CASEOD	CASETHCK	CASEWGHT	MAXAMPL	MINAMPL	MINATTN
in	degF	in	in	lb/ft	mV	mV	db/ft
7.875	100	3.5	0	10.3	93	1	0.8

PERFS	PPT usec	SRFTEMP degF	TDEPTH ft
No	0	0	0

Variable Description		
BOREID : Borehole I.D.	CASEWGHT : Casing Weight	PERFS : Perforation Flag
BOTTEMP : Bottom Hole Temperature	MAXAMPL : Maximum Amplitude	PPT : Predicted Pipe Time
CASEOD : Casing O.D.	MINAMPL : Minimum Amplitude	SRFTEMP : Surface Temperature
CASETHCK : Casing Thickness	MINATTN : Minimum Attenuation	TDEPTH : Total Depth

Sensor	Offset (ft)	Schematic	Description	Length (ft)	O.D. (in)	Weight (lb)
			CS6CENT-CSSROLLER	2.20	1.69	4.41
WVF3FT	10.72		CBL-Probe (275) Probe 2.75" Dual Receiver Bond	8.75	2.75	60.00
WVF5FT	9.72					
WVFSYNC HEADVOLT CCL	6.53 6.53 5.84		GR-Probe (275) Probe 2.75" 4 Channel Pulse	4.33	2.75	30.00
GR	3.10					

			CS6CENT-CSSROLLER	2.20	1.69	4.41
--	--	---	-------------------	------	------	------

Dataset:	noble_maried04-13_7-22-21_cbl.db: field/well/run1/pass7
Total length:	17.48 ft
Total weight:	98.82 lb
O.D.:	2.75 in