



Summit Oil and Gas PLUG & ABANDON POST JOB REPORT

**H D LAUER ESTATE #1 05-123-05404
S:12 T:7N R:59W Weld CO**

CallSheet #: 78505
Proposal #: 55246



PLUG & ABANDON Post Job Report

Attention: Sam Bradley | (970) 593-8626 | sb@s-companies.com

Summit Oil and Gas

PO Box 983038 | Park City, UT 84098

Dear Sam Bradley,

Thank you for the opportunity to provide cementing services on this well. American Cementing strives to achieve complete customer satisfaction. If you have any questions regarding the services or data provided, please contact American Cementing at any time.

Sincerely,

Scott Pollard

Senior Account Manager | (303) 249-6761 | scott.pollard@americancementing.com

Field Office 1716 E Allison Rd, Cheyenne, WY 82007
Phone: (307) 414-0049

Job Details & Summary

Geometry

Type	Function	OD (in)	ID (in)	Weight (lb/ft)	Top (ft)	Bottom (ft)	Excess (%)
Casing	Outer	10.75	10.192	32.75	0	169	0
Open Hole	Outer		8.75		169	1595	25
Tubing	Inner	2.875	2.441	6.4	0	1595	0

Equipment / People

Unit Type	Unit	Power Unit
Cement Trailer Float	CTF-193	TRC(TRB)-088
Cement Trailer Float	CTF-408	TRC(TRB)-420
Cement Pump Float	CPF-184	TRS-105
Cement Utility Float	CUF(FIF)-162	LDV-049

Timing

Event	Date/Time
Call Out	9/26/2021 11:30
Depart Facility	9/26/2021 17:30
On Location	9/26/2021 19:21
Rig Up Iron	9/26/2021 19:50
Job Started	9/27/2021 00:40
Job Completed	9/27/2021 10:47
Rig Down Iron	9/27/2021 11:15
Depart Location	9/27/2021 12:00

General Job Information

Metrics	Value
Well Fluid Density	8.4 lb/gal
Well Fluid Type	Water
Rig Circulation Vol	0 bbls
Rig Circulation Time	0 hours
Calculated Displacement	6.3 bbls
Actual Displacement	6 bbls
Total Spacer to Surface	0 bbls
Total CMT to Surface	5 bbls
Well Topped Out	No

Job Details

Metrics	Value
Flare Prior to Job	No
Flare During Job	No
Flare at End of Job	No
Well Full Prior to Job	Yes
Well Fluid Density Into Well	8.4 lb/gal
Well Fluid Density Out of Well	8.4 lb/gal

Job Details (cont.)

Metrics	Value
BHCT	89 °F
BHST	102 °F

Water Analysis

Metrics	Value	Recommended
Water Source	Rig Tank	
Temperature	60 °F	50-80 °F
pH Level	6.5	5.5-8.5
Chlorides	100 mg/L	0-3000 mg/L
Total Alkalinity	200	0-1000
Total Hardness	100 mg/L	0-500 mg/L
Carbonates	50 mg/L	0-100 mg/L
Sulfates	0 mg/L	0-1500 mg/L
Potassium	150 mg/L	0-3000 mg/L
Iron	0 mg/L	0-300 mg/L

Circulation

Lost Circulation Experienced
No



Job Execution Information

Fluid	Product	Function	Density (lb/gal)	Yield (ft ³ /sk)	Water Rq. (gal/sk)	Water Rq. (gal/bbl)	Volume (sks)	Volume (bbl)	Designed Top (ft)
1	PLUG SLURRY : Surface Plug - 1500'	Plug	15.80	1.15	5.00		1215.00	248.85	0
2	DISPLACEMENT : Final	DisplacementFinal	8.34			42.00		0.00	0

Job Fluid Details

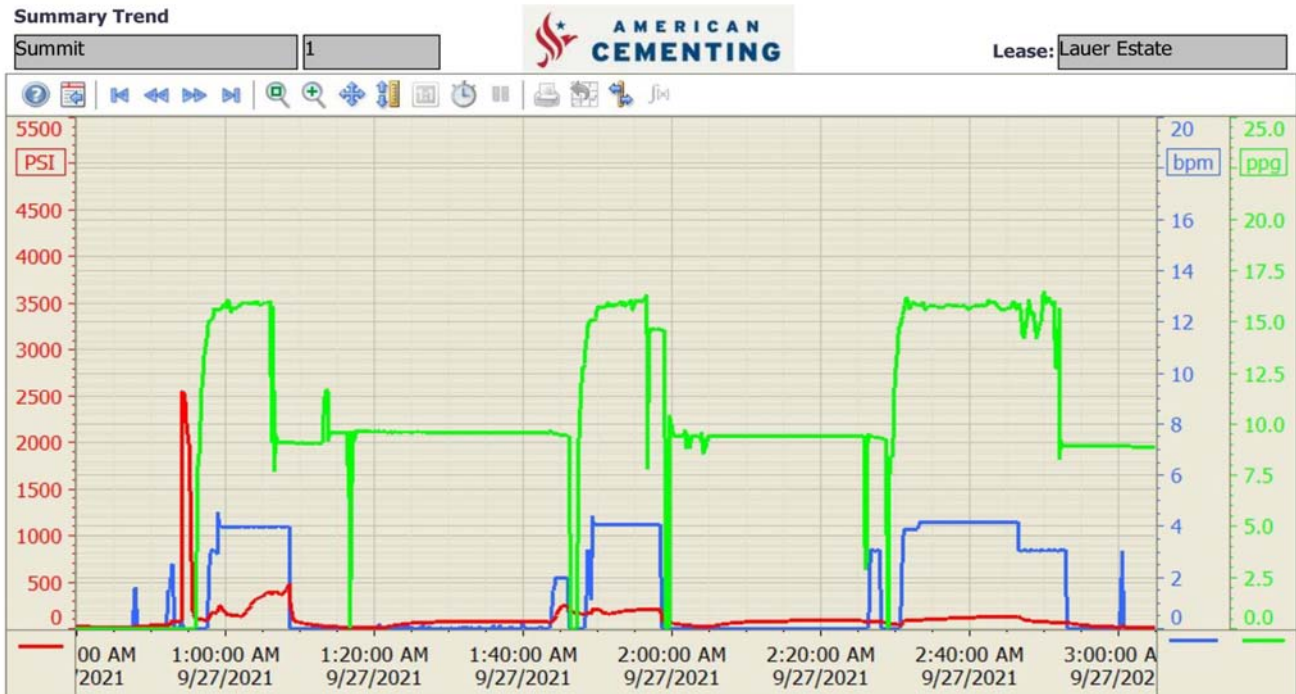
Fluid	Type	Fluid	Product	Function	Conc.	Uom
1	Plug	PLUG SLURRY : Surface Plug - 1500'	CLASS G	Cement	100.00	%

Job Logs

Line	Event	Date (MM/DD/YY)	Time (HH:MM)	Density (lb/gal)	Pump Rate (bpm)	Pump Volume (bbls)	Pipe Pressure (psi)	Comment
1	Callout	9/26/2021	11:30					Customer calls with an O/L time of 19:00 on 9/26/21
2	Depart Facility	9/26/2021	17:35					Leave yard to travel to location
3	Arrive On Location	9/26/2021	19:21					Arrive on location, rig getting ready to run logs
4	Spot Trucks	9/26/2021	19:40					Pre-rig up safety meeting, spot trucks on location
5	Rig Up	9/26/2021	19:50					Rig up water, bulk, and treating line
6	Waiting	9/26/2021	20:30					Waiting on rig to finish logging
7	Rig Up	9/26/2021	23:55					Rig up to the tubing
8	Safety Meeting	9/27/2021	00:15					Pre-job safety meeting with AC crew, rig crew, and company man
9	Fill Lines	9/27/2021	00:40	8.34	3	3	160	Fills lines with 3 bbls of fresh water, had to shut down twice due to leak in the rigs return line
10	Pressure Test	9/27/2021	01:01	8.34	0	0	2600	Test pumps and lines
11	Pump Cement	9/27/2021	01:03	15.8	4	37	200	Pump 180 sks of Plug Cement @15.8 ppg (37 bbls)
12	Pump Displacement	9/27/2021	01:14	8.34	4	6	200	Pump displacement
13	Shut Down	9/27/2021	01:16	8.34	0	0	0	Shut down let plug balance (1 bbl back to the pump)
14	Waiting	9/27/2021	01:23					Waiting on rig to pull tubing
15	Rig Up	9/27/2021	01:50					Rig back up to tubing
16	Pump Water	9/27/2021	01:52	8.34	2	4	100	Pump 4 bbls of fresh water ahead of cement
17	Pump Cement	9/27/2021	01:55	15.8	4	37	250	Pump 180 sks of Plug Cement @15.8 ppg (37 bbls)
18	Pump Displacement	9/27/2021	02:05	8.34	0	3	220	Pump displacement
19	Shut Down	9/27/2021	02:06	8.34	0	0	0	Shut down let plug balance (no flow back to the pump)
20	Waiting	9/27/2021	02:07					Waiting on rig to pull tubing
21	Rig Up	9/27/2021	02:30					Rig back up to tubing
22	Pump Water	9/27/2021	02:33	8.34	2	4	100	Pump 4 bbls of fresh water ahead of cement
23	Pump Cement	9/27/2021	02:36	15.8	4	91	143	Pump 454 sks of Plug Cement @15.8 ppg (91 bbls)
24	Shut Down	9/27/2021	03:01	15.8				Shut down due to returns tank being full, waiting on rig to rig up hose to drain some of the fluid
25	Pump Cement	9/27/2021	03:07	15.8	3	1	50	Pump the remaining bbl of cement on the pump (never got cement to surface)
26	Pump Displacement	9/27/2021	03:08	8.34	3	1	50	Pump 1 bbl of fresh water displacement
27	Shut Down	9/27/2021	03:08					Shut down
28	Rig Down	9/27/2021	03:10					Rig down from the tubing, rig pulls tubing out of the hole
29	Wash Up	9/27/2021	03:15					Wash pumps and lines
30	Waiting	9/27/2021	03:25					Waiting for cement to set so rig can tag it to find out how much more cement is needed to top off the well
31	Call For Cement	9/27/2021	03:10					Call to get cement loaded

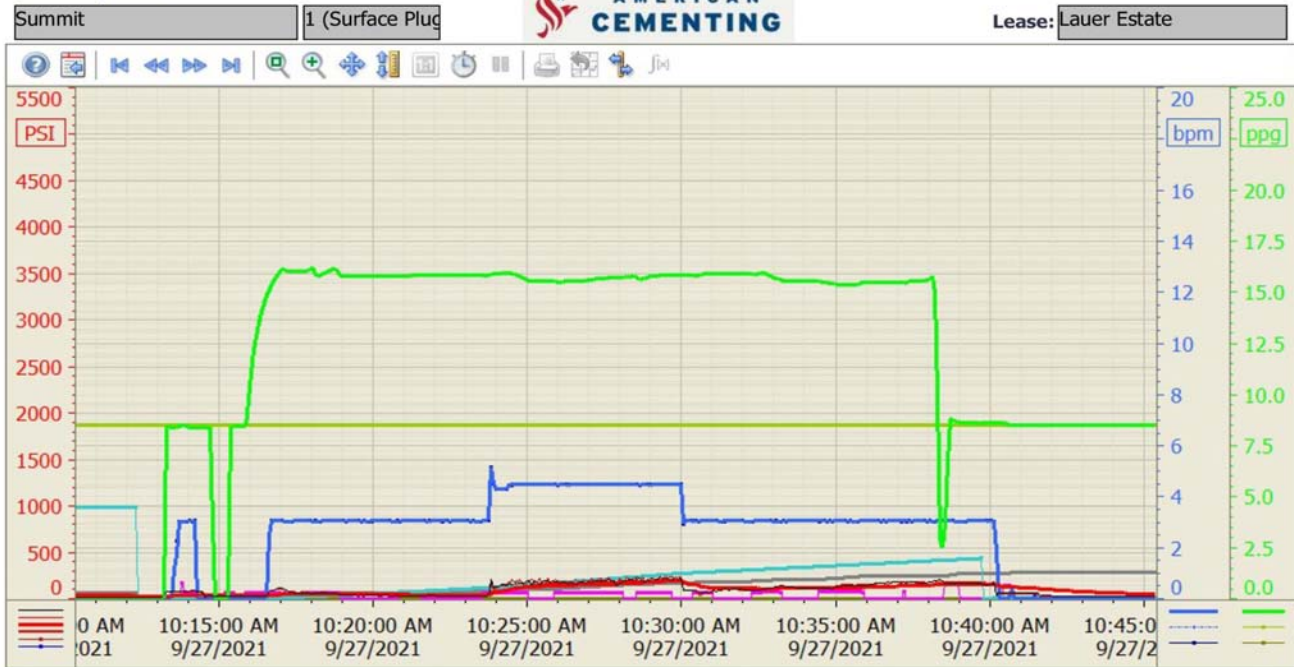
32	Cement Arrives	9/27/2021	09:00					Cement arrives on location (rig runs in the hole to tag cement)
33	Rig Up	9/27/2021	10:14					Rig up to tubing
34	Pump Water	9/27/2021	10:20	8.34	2	3	70	Pump fresh water to break circulation
35	Pump Cement	9/27/2021	10:22	15.8	3	0	150	Pump 385 sks of cement @15.8 + 1% Calcium Chloride + Super Sweep (provided by the rig)
36	Cement To Surface	9/27/2021	10:44	15.8	3	74	120	Start getting good cement back to surface (stop mixing and pump whats left on the truck)
37	Pump Displacement	9/27/2021	10:47	8.34	3	1	100	Pump 1 bbl of fresh water behind to flush lines
38	Shut Down	9/27/2021	10:47					Shut down job finished (5 bbls of cement to surface)
39	Safety Meeting	9/27/2021	10:50					Pre-rig down safety meeting
40	Wash Up	9/27/2021	11:00					Wash pump
41	Rig Down	9/27/2021	11:15					Rig everything down
42	Leave Location	9/27/2021	12:00					Leave location to travel back to the yard

Pump Diagrams



9/27/2021 3:31:00 AM

Summary Trend



9/27/2021 11:22:04 A