

sb@s-companies.com

From: Wolfe - DNR, Stephen <stephen.wolfe@state.co.us>
Sent: Thursday, September 23, 2021 1:37 PM
To: sb@s-companies.com
Subject: Re: FW: Fay #1 Re-Entry

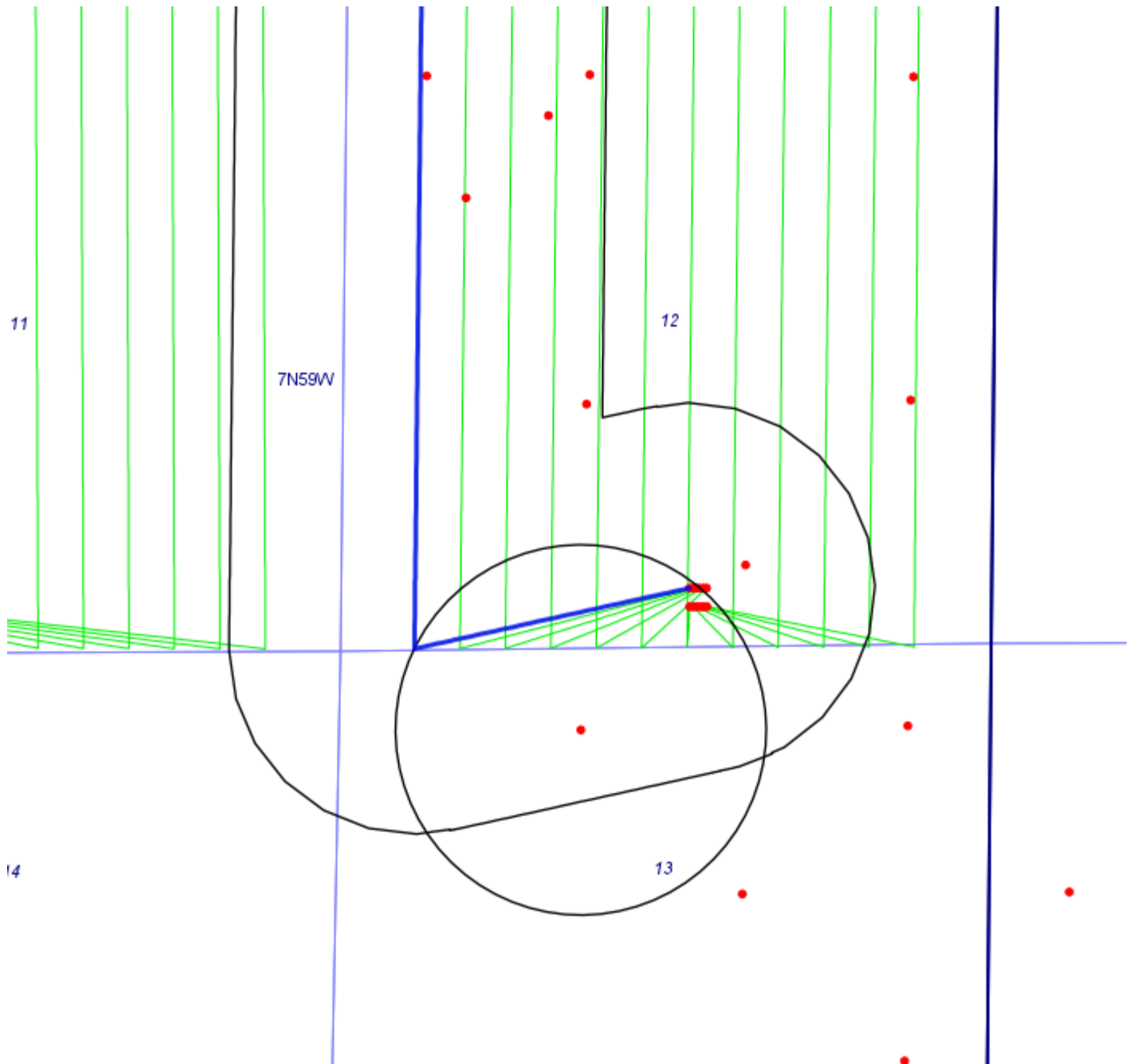
Sam,

You are ok to proceed as proposed due to the hole conditions encountered and the depth you were able to reach.

Steve

On Thu, Sep 23, 2021 at 11:39 AM <sb@s-companies.com> wrote:

Here is a map with halos. We propose we cement this up from 1,286' to surface and move our last stage of the lateral outside of the 1,500' halo.



Thanks,

Sam Bradley

VP Petroleum Engineering

Summit Companies

Summit Financial

Summit Energy Research

Schneider Summit Services

(C): 970.593.8626

www.S-Companies.com

Confidentiality Note: This email message, including any attachment(s), is for the sole use of the intended recipient(s) and may contain information that is confidential, privileged, or otherwise protected by law. Any unauthorized use, disclosure, or distribution of this communication is strictly prohibited. If you have received this communication in error, please contact the sender immediately by reply email and destroy the original and all copies of the email, including any attachment(s).

From: sb@s-companies.com <sb@s-companies.com>
Sent: Thursday, September 23, 2021 11:28 AM
To: 'Wolfe - DNR, Stephen' <stephen.wolfe@state.co.us>
Subject: Fay #1 Re-Entry

Stephen – Can we have a quick chat?

Thanks,

Sam Bradley

VP Petroleum Engineering

Summit Companies

Summit Financial

Summit Energy Research

Schneider Summit Services

(C): 970.593.8626

www.S-Companies.com

Confidentiality Note: This email message, including any attachment(s), is for the sole use of the intended recipient(s) and may contain information that is confidential, privileged, or otherwise protected by law. Any unauthorized use, disclosure,

or distribution of this communication is strictly prohibited. If you have received this communication in error, please contact the sender immediately by reply email and destroy the original and all copies of the email, including any attachment(s).

--

Stephen Wolfe

303-894-2100 x5187 (o)

303-882-0224 (c) Working from home