



October 19, 2021

Mr. Taylor Rowley
Senior Environmental Representative
Kerr-McGee Oil & Gas Onshore LP
501 N Division Blvd
Platteville, Colorado 80651

**Subject: Form 4 Sundry Notice – Final Reclamation
Kerr-McGee Oil & Gas Onshore LP (Operator: 47120)
RIVERBEND 27-14, Location ID: 424609
NWNW S13-T1N-R67W
Weld County, Colorado**

Dear Mr. Rowley:

WSP USA (WSP) was contracted by Kerr McGee Oil & Gas Onshore LP (Kerr-McGee) to complete final reclamation inspections at plugged and abandoned (P&A) well sites located in Weld County, Colorado. The reclamation inspections were conducted in accordance with Colorado Oil and Gas Conservation Commission (COGCC) Rule 1004.

The former RIVERBEND 27-14 well (API: 05-123-34110) was P&A'd on February 1, 2012 as identified in the Form 6, Document Number 400241825. On October 11, 2021 WSP conducted a final reclamation inspection for the RIVERBEND 27-14 well pad and has determined that the site is in compliance with final reclamation requirements per COGCC Rule 1004. The former RIVERBEND 27-14 well is located on an active pad (Location ID: 424609) and the associated active tank battery is located 0.04 miles northwest of the active well pad. The former RIVERBEND 27-14 well pad remains in use servicing Kerr-McGee producing wells: API: 05-123-34112; API: 05-123-34114; API: 05-123-34115; API: 05-123-34116; API: 05-123-34117; API: 05-123-34932; API: 05-123-34102; API: 05-123-34103; API: 05-123-34104; API: 05-123-34106; API: 05-123-34107; API: 05-123-34108; API: 05-123-34109; and API: 05-123-34111. All disturbed areas have been compacted and stabilized with road base to minimize erosion. WSP personnel located the P&A wellhead location using a handheld Trimble (R1) Global Positioning System (GPS) unit and latitude and longitude coordinates obtained from the COGCC online database. A general site location map is included as Figure 1; and the Site Map displaying the location of the reclaimed site on aerial imagery is included as Figure 2. Photographs of the P&A location were taken facing each cardinal direction from the P&A wellhead location. The photographic log is included as Attachment 1.

Based on the successful reclamation of the RIVERBEND 27-14 site, a Form 4 Sundry Notice requesting final reclamation status has been prepared for the submittal to the COGCC. This letter will be included as an attachment to the electronic Form 4 submittal.

If you have any questions or need additional information, please do not hesitate to contact us.

Kind regards,

Tanna Lyon,
Lead Consultant, Environmental Scientist

WSP USA
4600 WEST 60TH AVENUE
ARVADA CO 80003

Tel.: 303-433-9788
wsp.com

Brian Sulzberger, P.G., P.E.
Senior Lead Consultant, Environmental Engineer



Attachments:

Figure 1	Site Location Map
Figure 2	Site Map
Enclosure A	Photographic Log

.

FIGURES

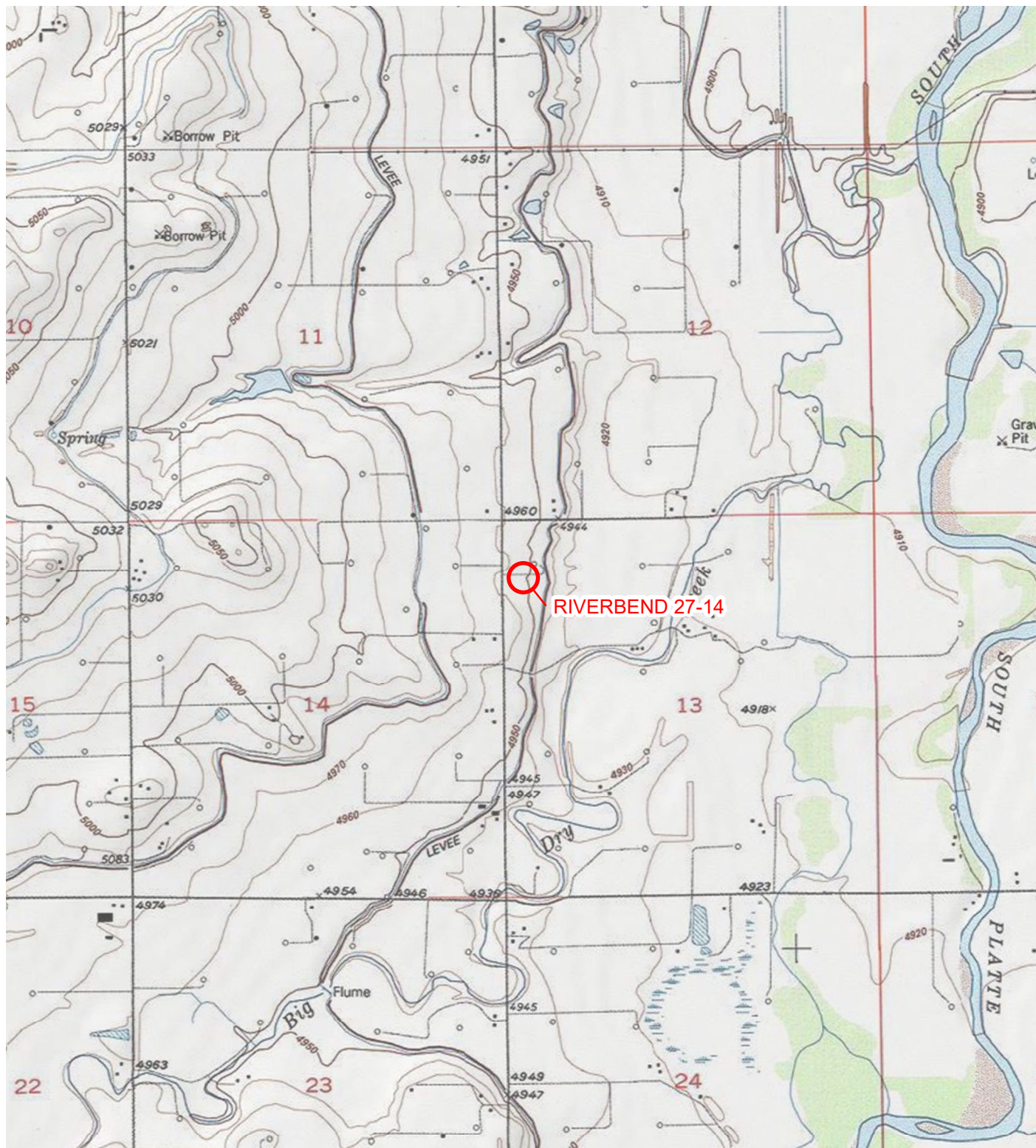


IMAGE COURTESY OF ESRI/USGS

LEGEND

 SITE LOCATION

0 2,000 4,000
Feet

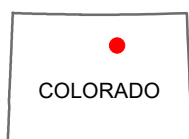
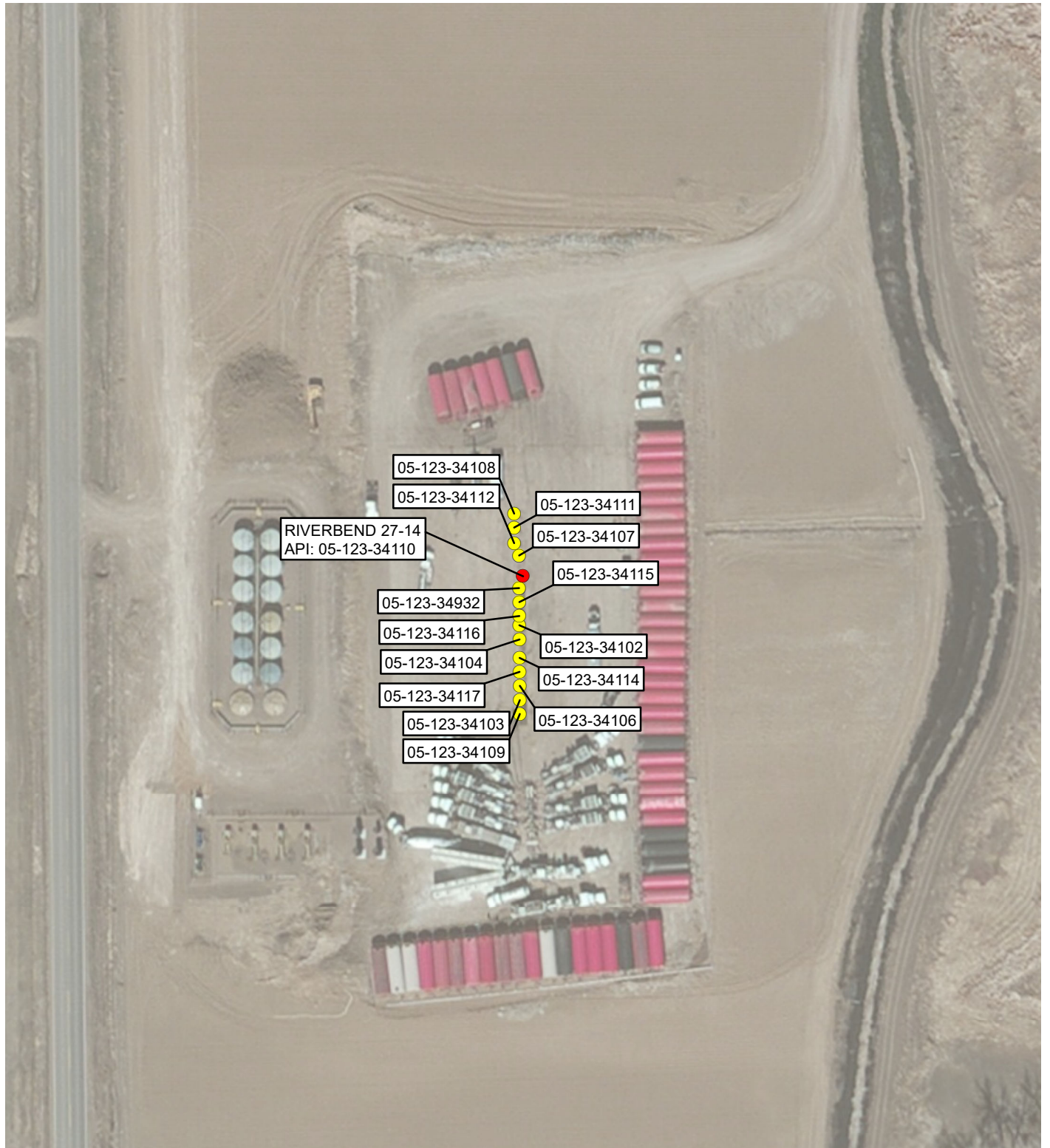


FIGURE 1
SITE LOCATION MAP
RIVERBEND 27-14
NWNW SEC 13-T1N R670W
WELD COUNTY, COLORADO
KERR-MCGEE OIL & GAS ONSHORE, LP





LEGEND

- PLUGGED AND ABANDONED WELL (RIVERBEND 27-14)
- WELLHEAD

IMAGE COURTESY OF ESRI

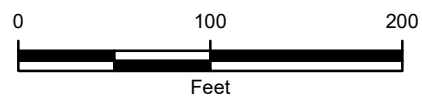


FIGURE 2
SITE MAP
RIVERBEND 27-14
NWNW SEC 13-T1N R670W
WELD COUNTY, COLORADO
KERR-MCGEE OIL & GAS ONSHORE, LP




ENCLOSURE A – PHOTOGRAPHIC LOG



PHOTOGRAPHIC LOG

Kerr McGee Oil & Gas Onshore LP	RIVERBEND 27-14 Weld County, Colorado	40.056016, -104.847381
--	--	-------------------------------

Photo No.	Date	
1	October 11, 2021	
View facing north as required in Colorado Oil and Gas Conservation Commission (COGCC) Rule 1004.		

Photo No.	Date	
2	October 11, 2021	
View facing east as required in COGCC Rule 1004.		



PHOTOGRAPHIC LOG		
Kerr McGee Oil & Gas Onshore LP	RIVERBEND 27-14 Weld County, Colorado	40.056016, -104.847381

Photo No.	Date	
3	October 11, 2021	
View facing south as required in COGCC Rule 1004.		

Photo No.	Date	
4	October 11, 2021	
View facing west as required in COGCC Rule 1004.		



PHOTOGRAPHIC LOG		
Kerr McGee Oil & Gas Onshore LP	RIVERBEND 27-14 Weld County, Colorado	40.056016, -104.847381

Photo No.	Date	
5	October 11, 2021	
Overall site view per COGCC Rule 1004.		

Photo No.	Date	
6	October 11, 2021	
Overall active tank battery view per COGCC Rule 1004.		