

Rout 2

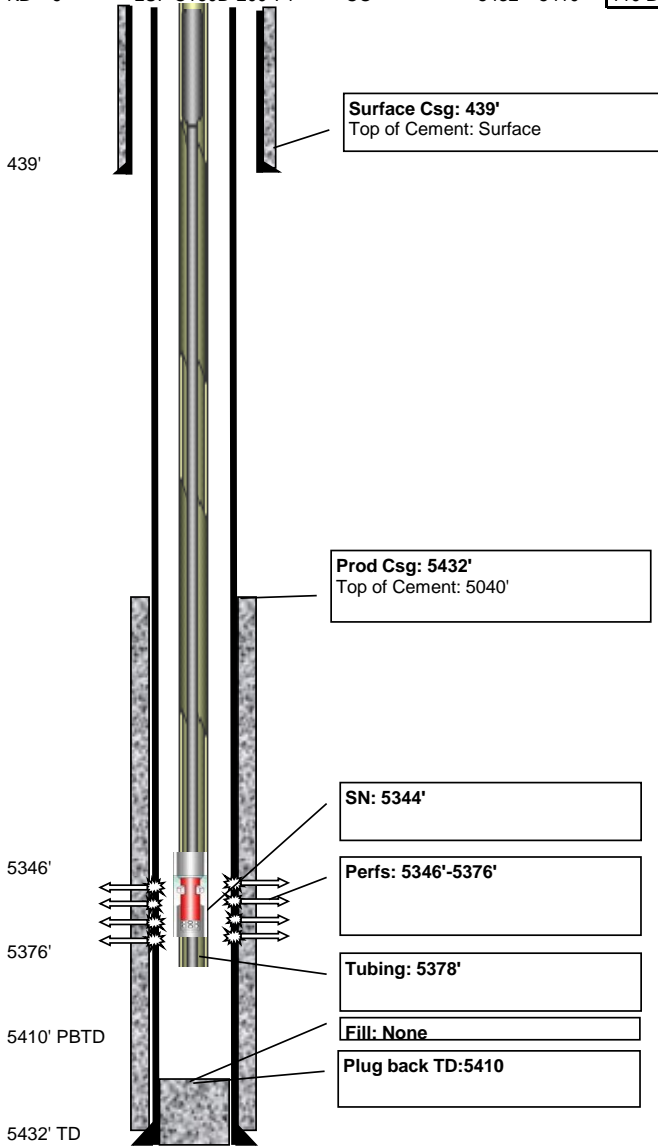
Pumping

Today - 10/22/2021

API #	Lease ID	Permit #	County	KB	GL	Current production		Sec N/S	Sec E/W	Sec
05-017-07228		91-442	Cheyenne	4307'	4298'	8.0 BOPD	1 BWPD	1988' S	2014' E	14-14S-47W
Pumping Unit		Motor	State	TD	PBTD	Initial production		Lease N/S	Lease E/W	Blk
KB = 9'		LUF C160D-200-74	CO	5432'	5410'	110 BOPD	0 MCFD	1 BWPD		

Perforations

Top	Bottom	SPF	Stimulation	OPEN?
5346'	5376'	4	3000 gal 15% MCA	YES



Total = 30'

Casing

Depth	Size	Wgt (#)	Grade	Description
439'	8-5/8"			
5432'	5-1/2"			

Cement

Casing	Sacks	TOC	Description
8-5/8"	250	surface	250 sx 3% CC
5-1/2"	120	5040'	120 sx prem

Tubing

Description	Size	Length	Top	Bot
169 jts tbg	2-7/8"	5347'	0'	5264'
TAC		3'	5264'	5267'
3 jts tbg		90'	5267'	5357'
SN		1'	5357'	5358'
Perf'd Sub		3'	5358'	5361'
Mud anchor		15'	5361'	5376'

Rods

Description	Size	Length	Top	Bot
Polished Rod	1-1/2"	22'	-3'	19'
4 Pony Rods	7/8"	24'	19'	43'
62 Rods	7/8"	1550'	43'	1593'
139 Rods	3/4"	3475'	1593'	5068'
10 Rods	1"	250'	5068'	5318'
Pony	1"	2'	5318'	5320'
Pump	1-1/4"	20'	5320'	5340'

Pump

1-1/4" X 20' RHBC