



Gamma Ray

LWD MEMORY LOG

Scale:	Company: Noble Energy				Well:		Rampart A33-760	
1:240					Field:		Wattenberg	
True Vertical Depth	County:				Weld		Country: United States	
Depth Reference:	State:				Colorado			
Driller's Depth	Surface Location:				Other Services:			
Status:	Final Print	Latitude:	40° 27' 57.762" N	Longitude:	104° 33' 39.875" W	Directional		
API No:	05-123-50926-00	SEC:	21	TWN:	6N	RGE:	64W	
Job ID:	110958225	Mean Sea Level	Elevation:	0.00 ft	Elev. KB:	N/A		
Permanent Datum (P.D.):	Rig Floor	Above P.D.:	4756.00 ft	Elev. DF:	4756.00 ft	Elev. GL:	4726.00 ft	
Log Measured From:								
Dates		Interval		Magnetic Field Reference				
From: 2021-08-04	Drilled (ft)	Logged (ft)	Azi Reference North:	Grid	Dip Angle: (deg)	66.79		
To: 2021-08-06	Top: 1960.00	Top: 1960.00	Total Magnetic Field Strength: (nT)			5.1906		
Spud: 2021-07-28	Bottom: 16915.00	Bottom: 16888.00	Mag to Reference North Correction: (deg)			7.00		
Borehole Record								
Hole Size (in)	From (ft)	To (ft)	Size (in)	Weight (lb/ft)	From (ft)	To (ft)		
13.500	30.00	1960.00	9.625	36.00	30.00	1950.00		
8.500	1960.00	16915.00						

(C) 2021 Baker Hughes Company - All rights reserved. Baker Hughes and its affiliates provides this information on an "as is" basis for general information purposes and believes it to be accurate as of the date of publication. Baker Hughes does not make any representation as to the accuracy or completeness of the information and makes no warranties of any kind, specific, implied or oral, to the fullest extent permissible by law, including those of merchantability and fitness for a particular purpose or use. Baker Hughes hereby disclaims any and all liability for any direct, indirect, consequential or special damages, claims for lost profits, or third party claims arising from the use of the information, whether a claim is asserted in contract, tort, or otherwise. The Baker Hughes logo is a trademark of Baker Hughes Company.

Log Run Summary

Run No	Bit Run No.	Bit Size (in)	Bit Type	Bit Gauge Length (in)	Assembly Type	Logged Interval		Bit Depth Interval		Date / Time		Circ. Hours (h)
						Top (ft)	Bottom (ft)	From (ft)	To (ft)	Start Logging	End Logging	
1	1	8.500	PDC	3.00	AutoTrak Curve	1960.00	16888.00	1960.00	16915.00	2021-08-04 00:07	2021-08-06 15:10	57.19

Crew

Name		Arrive Wellsite	Depart Wellsite	Name		Arrive Wellsite	Depart Wellsite	Name		Arrive Wellsite	Depart Wellsite
------	--	-----------------	-----------------	------	--	-----------------	-----------------	------	--	-----------------	-----------------

Dallata Dinh	2021-08-03	2021-08-05	Jeremiah Samson	2021-08-03	2021-08-07	Michael Gurnsey	2021-08-03	2021-08-07
Rizwan Khan	2021-08-03	2021-08-05	Tien Bui	2021-08-03	2021-08-07	Alixandria Cain	2021-08-05	2021-08-07
Tyler Bench	2021-08-05	2021-08-07						

Witness

Name	Run
Charles Collver	1

Mud Properties Record

Date / Time	Run No.	Depth (ft)	Mud Type	Density (ppg)	Viscosity (cP)	pH	Fluid Loss (cm3)	Oil / Water	Source	Total Chlorides (ppm)	K+ (%)
2021-08-03 12:23	1	1960.00	Oil Based Mud	9.2	10	N/A	2.0	79.5/20.5	Active Pit	25000	0.00
2021-08-04 20:28	1	6532.00	Oil Based Mud	9.4	13	N/A	3.0	80/20	Active Pit	27992	0.00
2021-08-05 05:00	1	7688.00	Oil Based Mud	9.5	12	N/A	3.0	80.1/19.9	Active Pit	27510	0.00
2021-08-05 16:00	1	11510.00	Oil Based Mud	9.6	12	N/A	3.0	81.1/18.9	Active Pit	26725	0.00

Equipment and Service Data

Run No.	Tool	Serial Number	Measurement	Sensor Offset (ft)	Bit Offset (ft)	Max O.D. (in)	Min I.D. (in)
1	AutoTrak Curve Steering Unit	15322209	Near Bit VSS	5.93	6.75	7.000	4.330
1	AutoTrak Curve Steering Unit	15322209	Near Bit Inclination	5.93	6.75	7.000	4.330
1	AutoTrak Curve MWD	14256861	Gamma (single)	2.82	12.92	7.000	3.250
1	AutoTrak Curve MWD	14256861	Directional (mag)	12.27	22.37	7.000	3.250

Service and Tool Mnemonics

Mnemonic	Name	Description
ATC SU	AutoTrak Curve SU	Auto Trak Curve Steering Unit
ATC MWD	AutoTrak Curve MWD	Auto Trak Curve MWD
ATC LCPM	AutoTrak Curve LCPM	Auto Trak Curve LCPM

Comments

1	Depth measurements were obtained from a depth control system not supplied or operated by Baker Hughes. Due to lack of control by Baker Hughes logging engineers, depth calibrations and measurements could not be independently verified.
2	Baker Hughes LWD Run 1 utilized 6 ¾ inch NaviGamma service (Gamma Ray and Directional) behind a 8 1/2 inch bit and rotary steerable assembly from 1960 to 16915 feet MD (1960 to 6803 feet TVD).
3	The Gamma Ray Apparent (GRAM) data is presented 0 to 300 API, per the customer's request.

Remarks

Number	Depth (ft)	Hole Section (in)	Run No.	Remark
--------	------------	-------------------	---------	--------

Curve Mnemonics

Presented Curves	Description	Units
ROPA	Depth Averaged ROP 3 ft Average	ft/h
WOBA	Weight on Bit - Average 1 ft Average	klb
GRAM	Gamma Ray - Apparent - Memory 0.5 ft Average	API
TCDM	Directional Real-Time Survey Temperature	degF

Gamma Ray - Apparent 0.5 ft Average GRAM	TVD 1:240 feet	Depth Averaged ROP 3 ft Average ROPA	Weight On Bit, Average 1 ft Average WOBA
0 300		1000 0	0 50
API		ft/h	klb
			Downhole Temperature TCDM
			0 300
			degF

GRAM

9 5/8" Casing
AR1

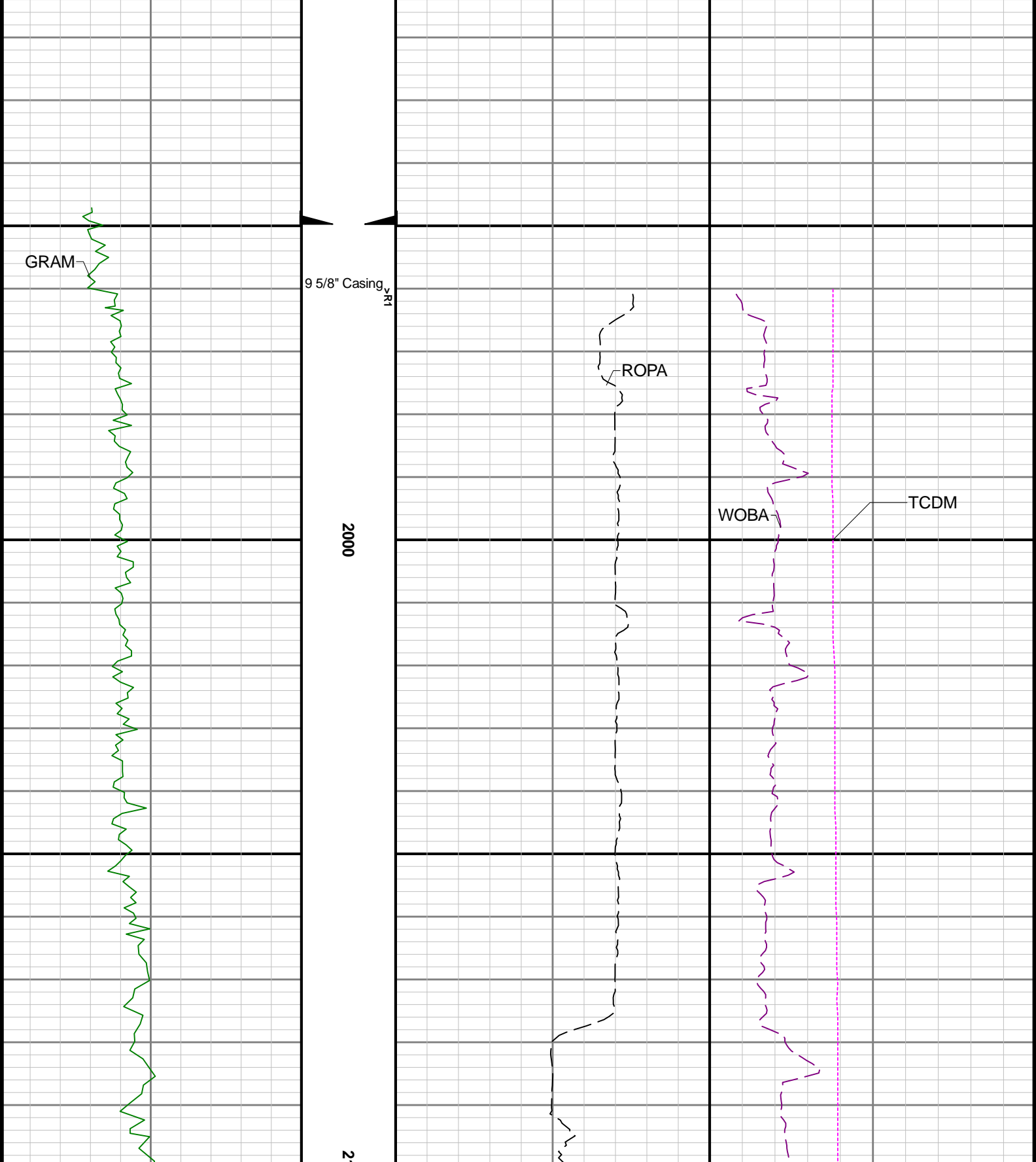
2000

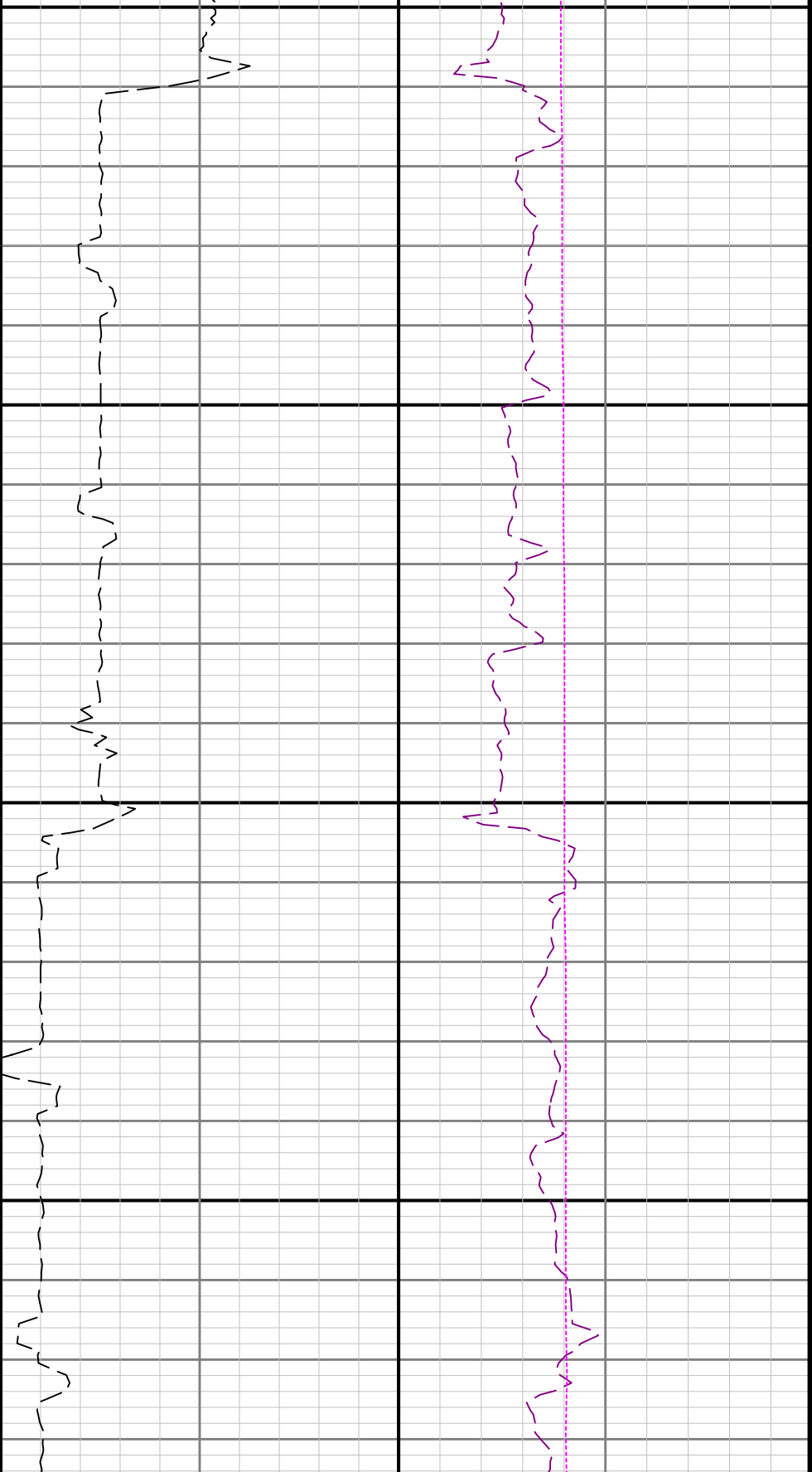
2

ROPA

WOBA

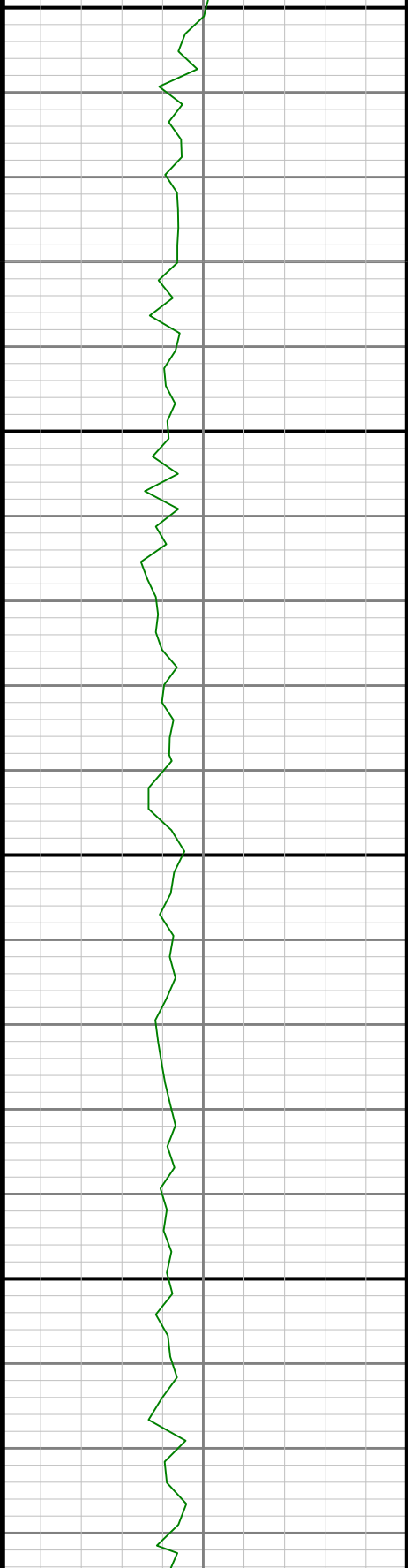
TCDM

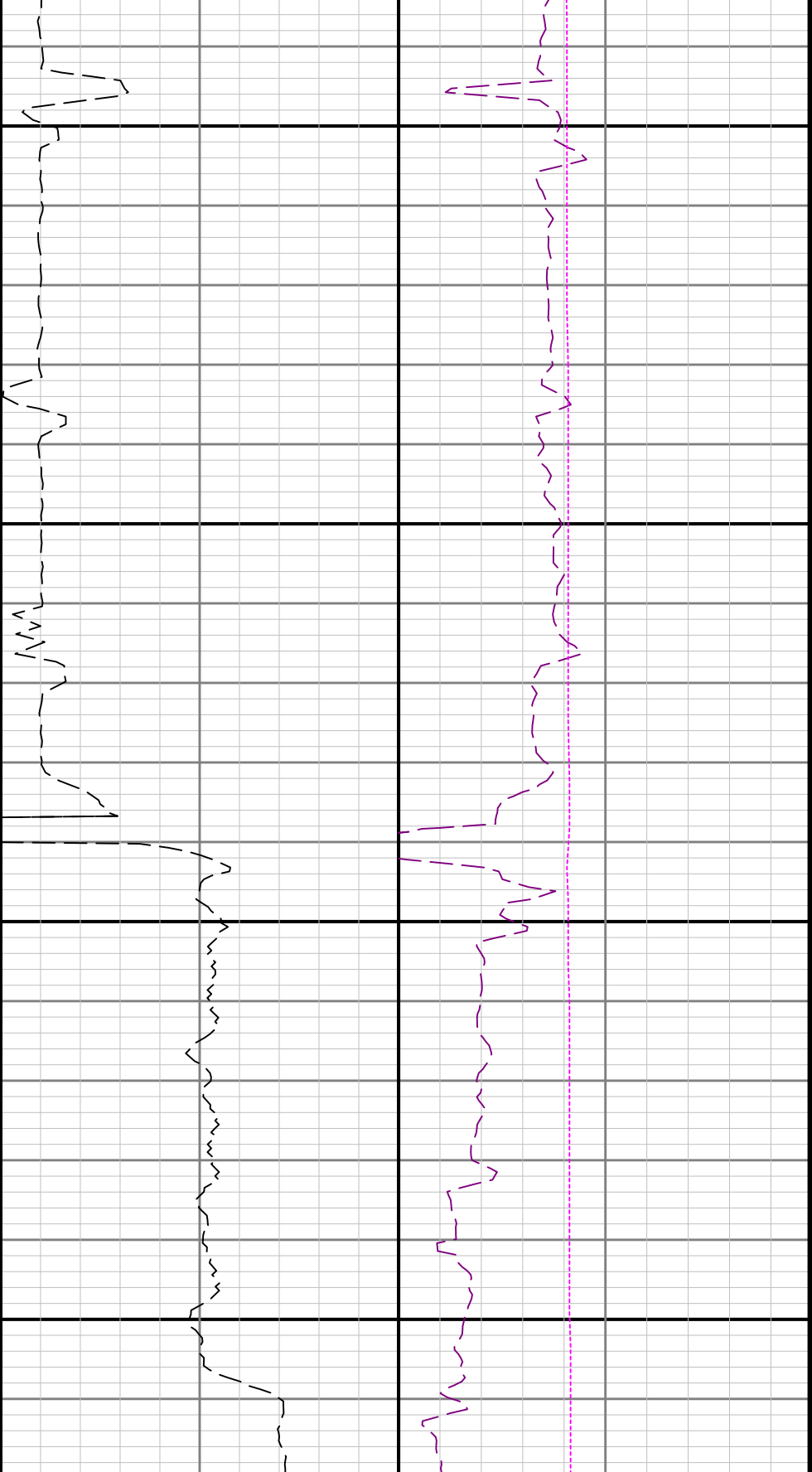




100

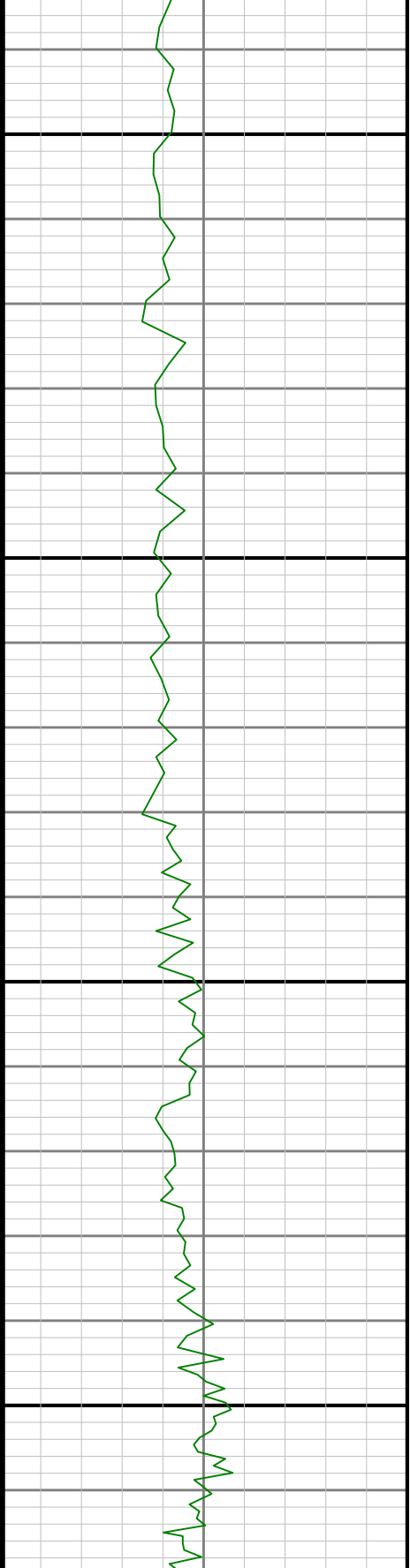
200

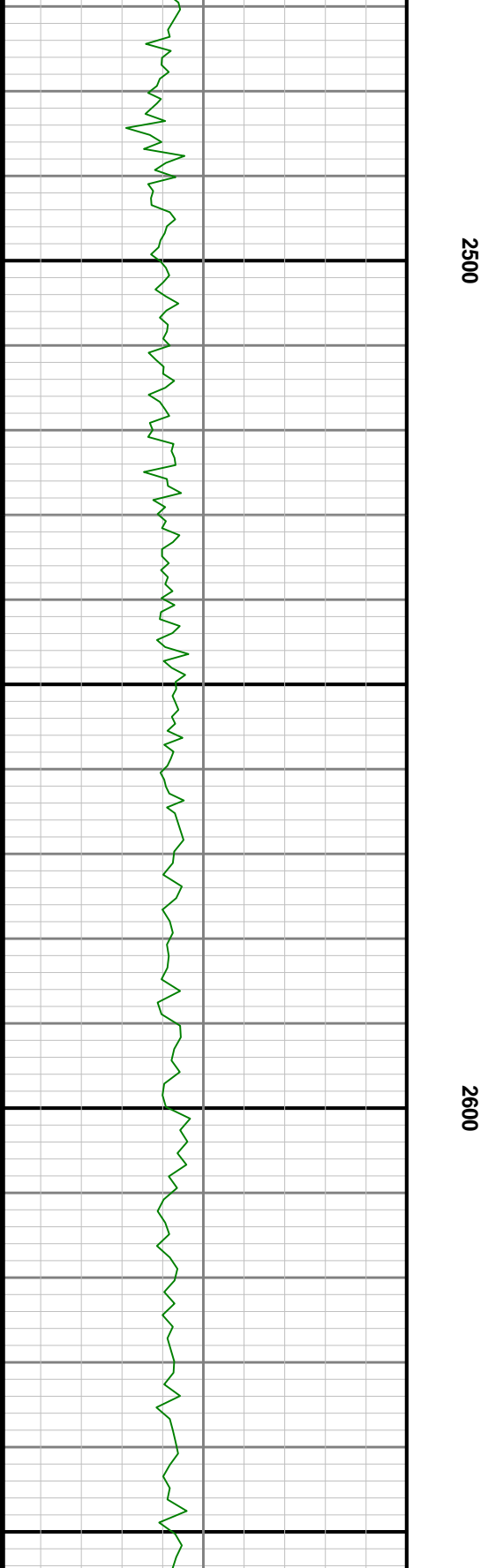


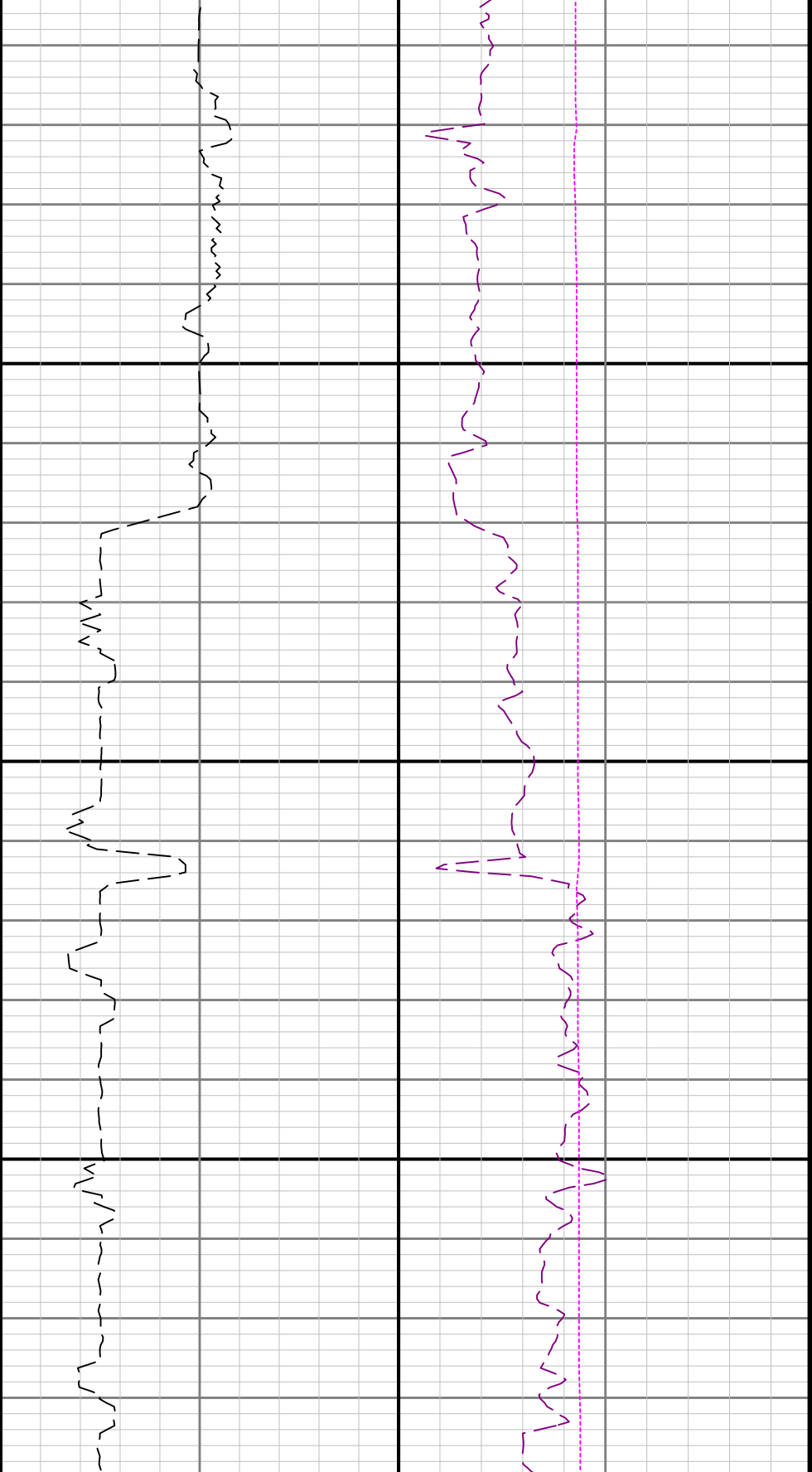


2300

2400

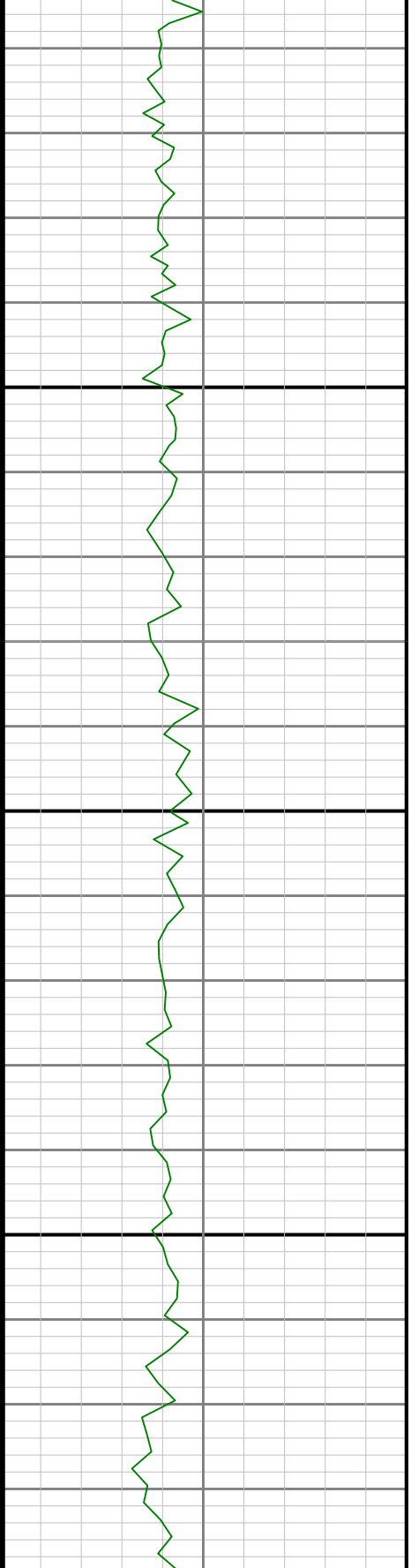


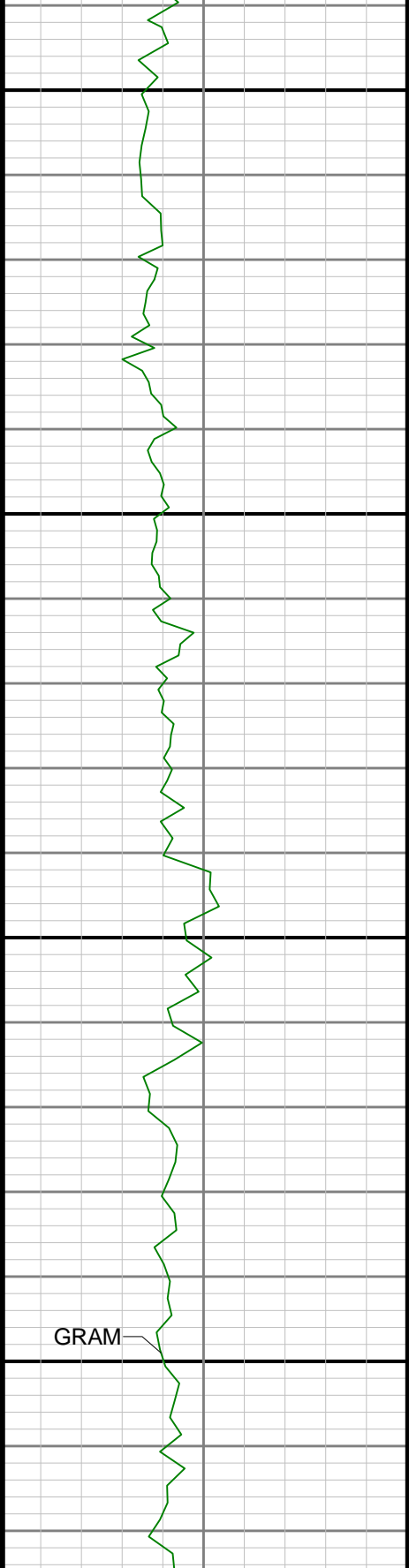




2700

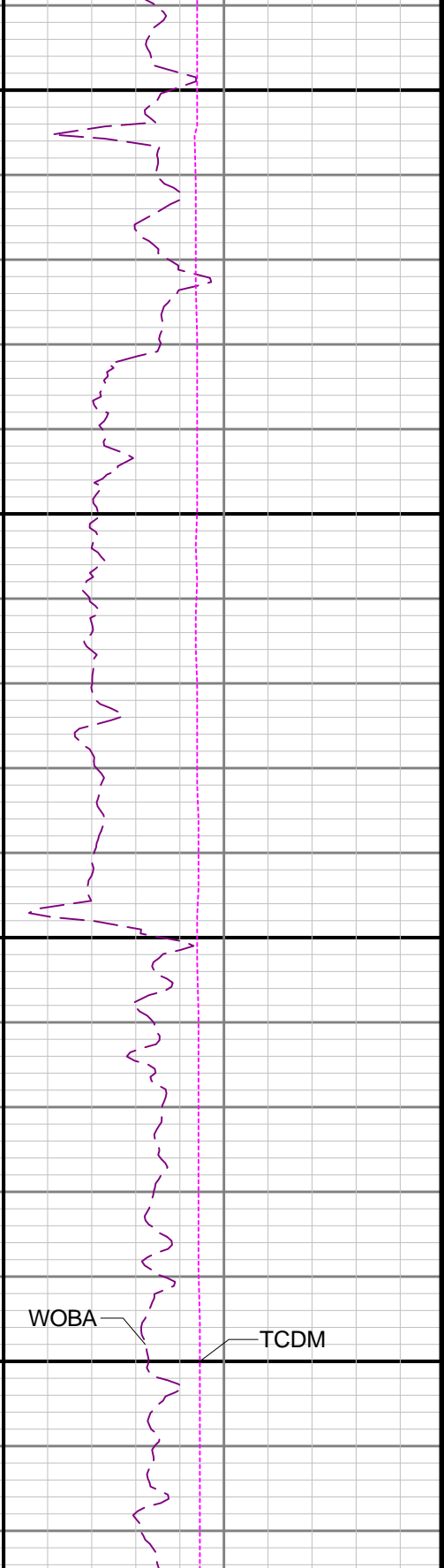
2800

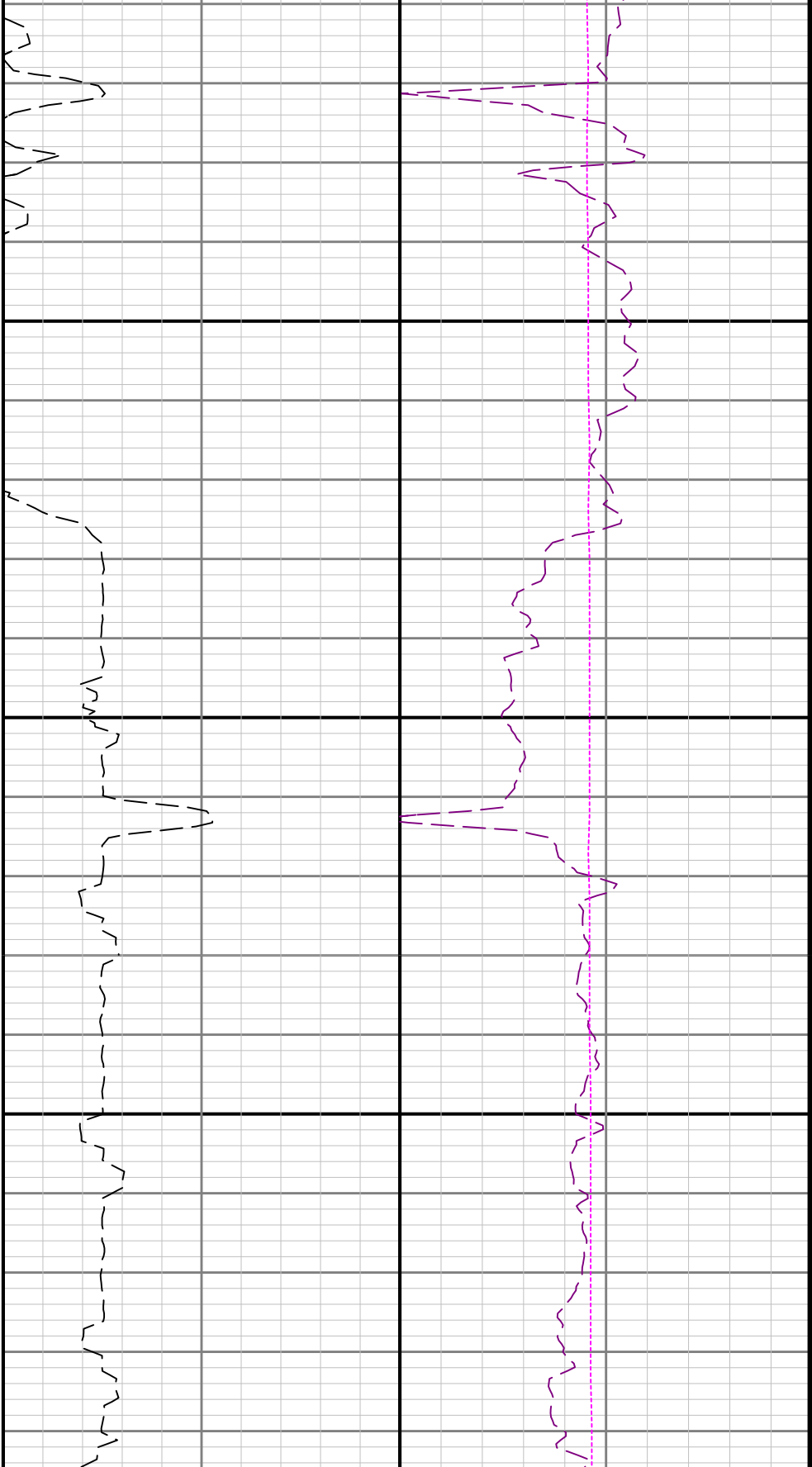




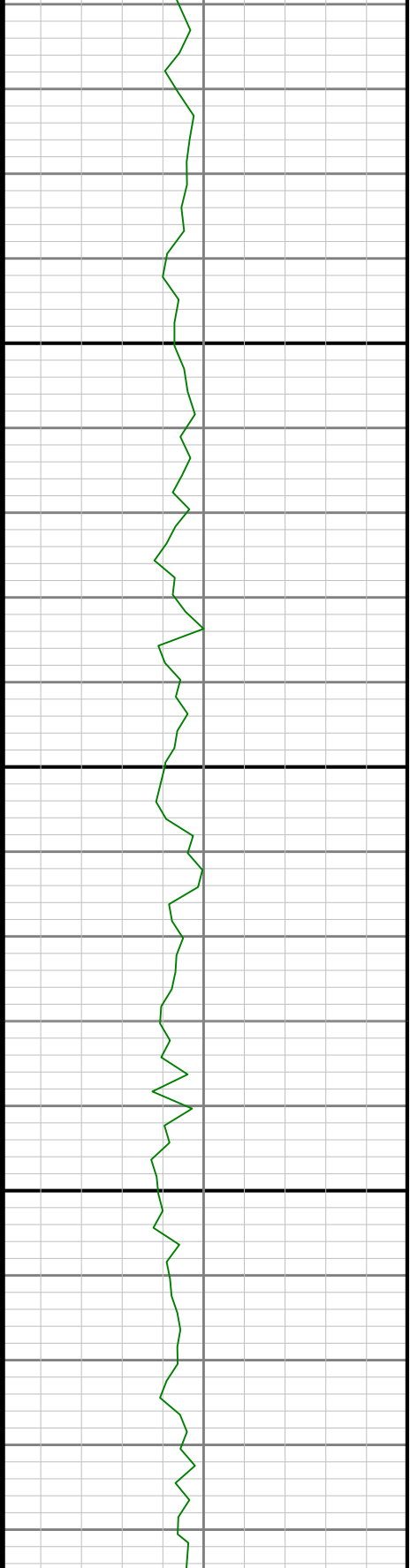
2900

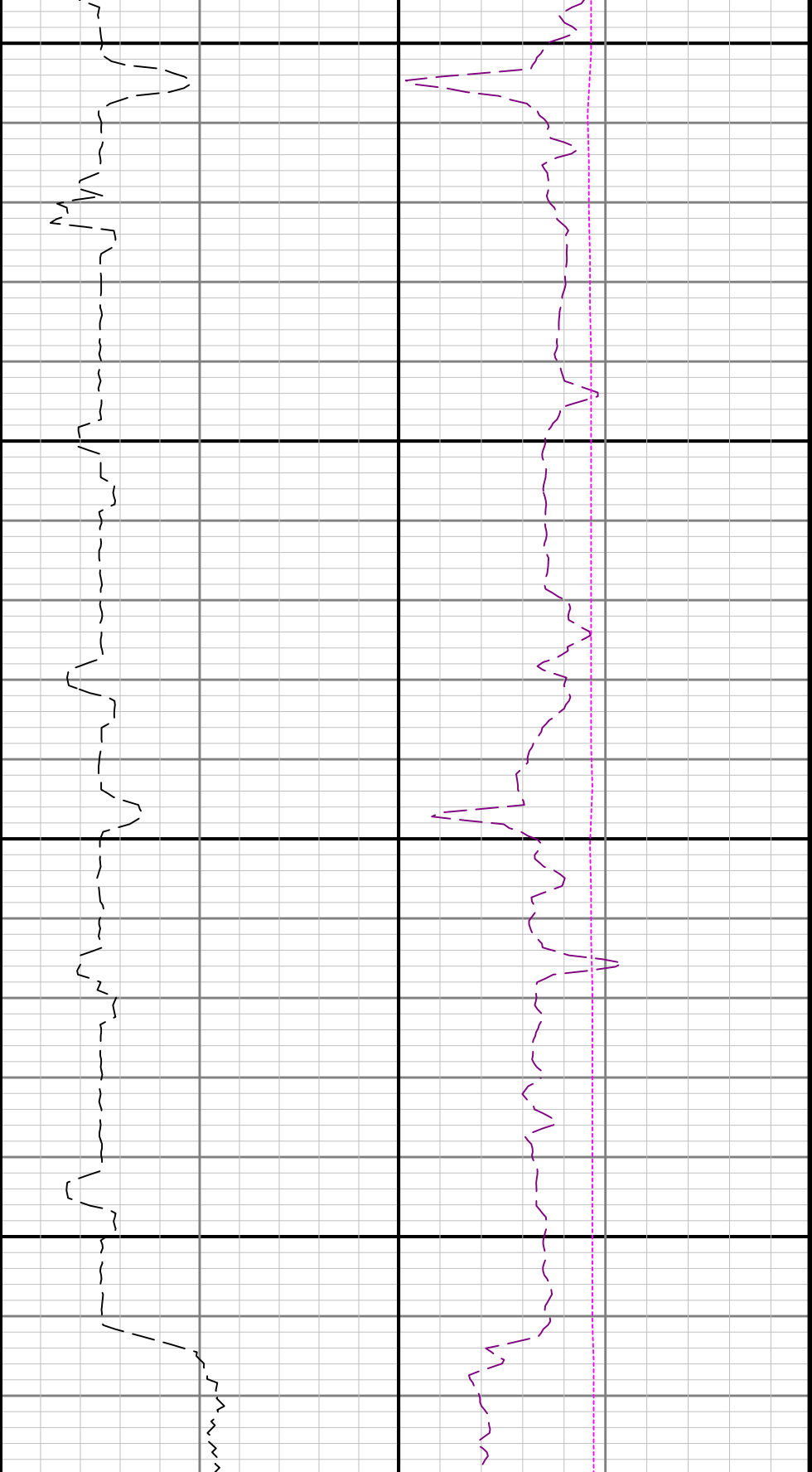
3000





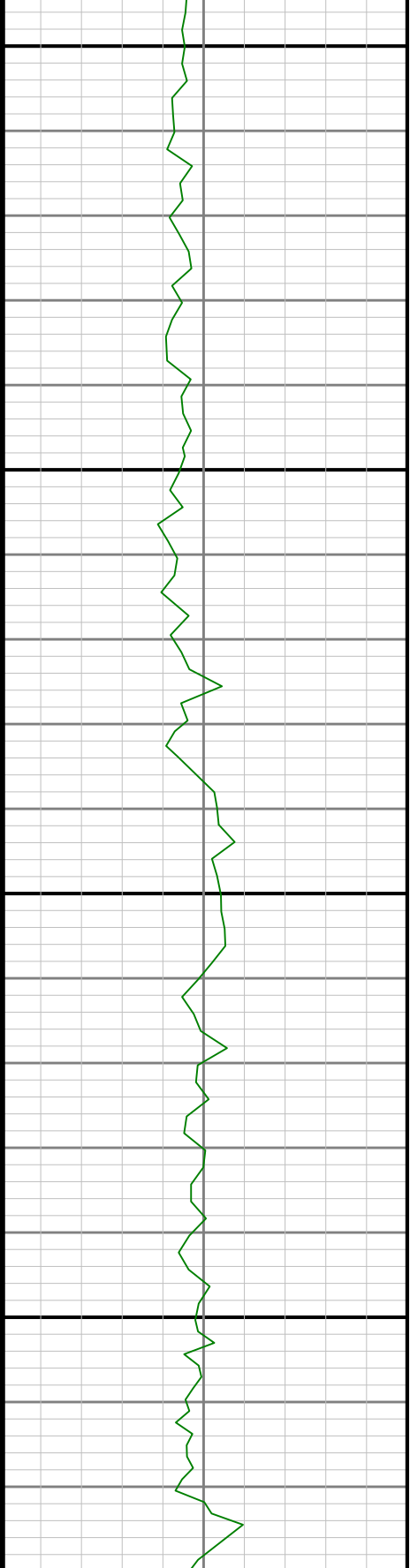
3300





3400

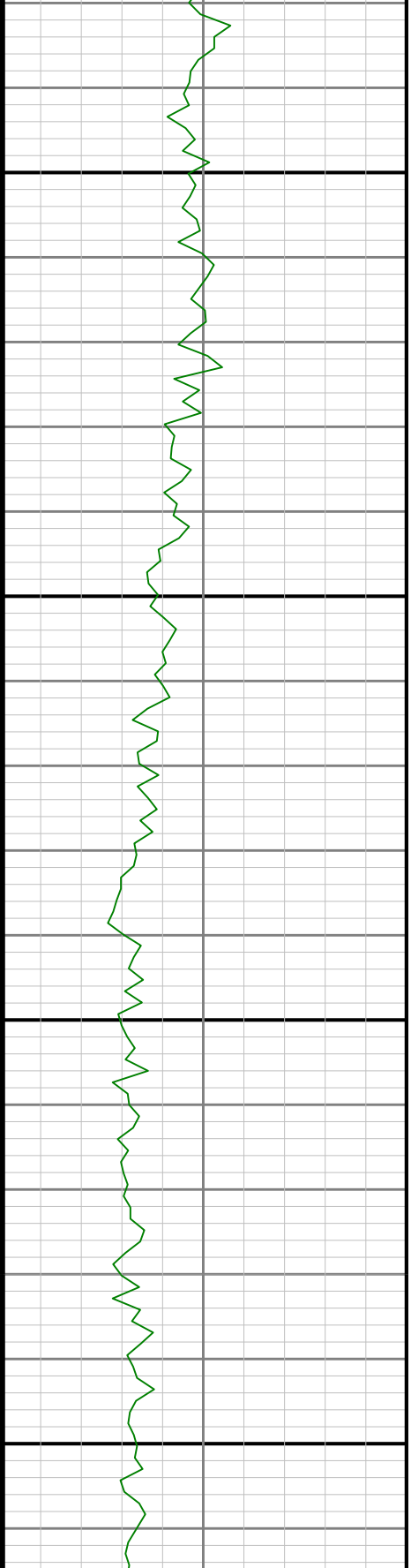
3500





3600

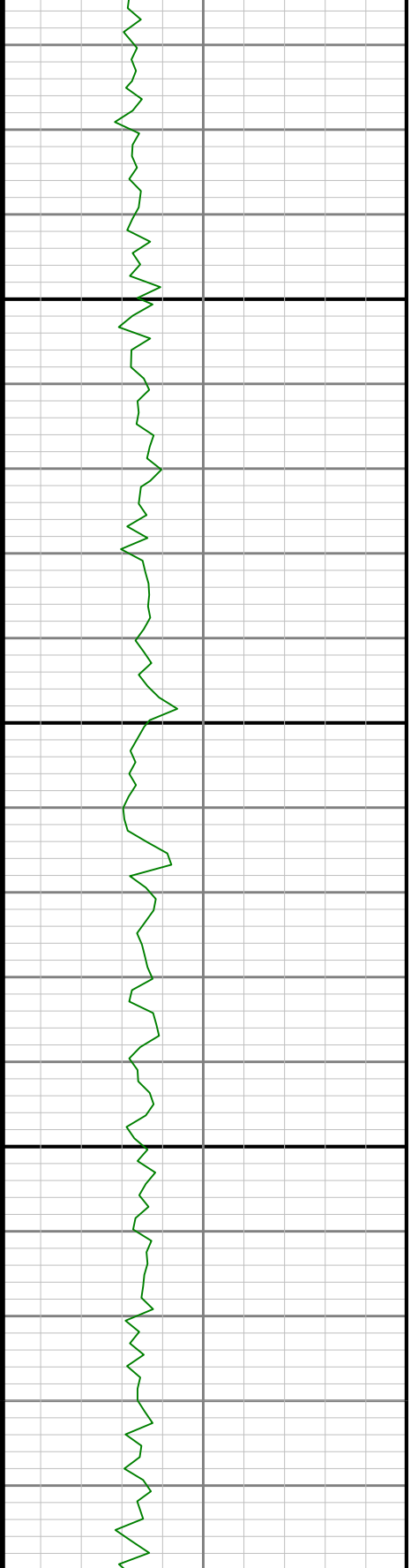
3700

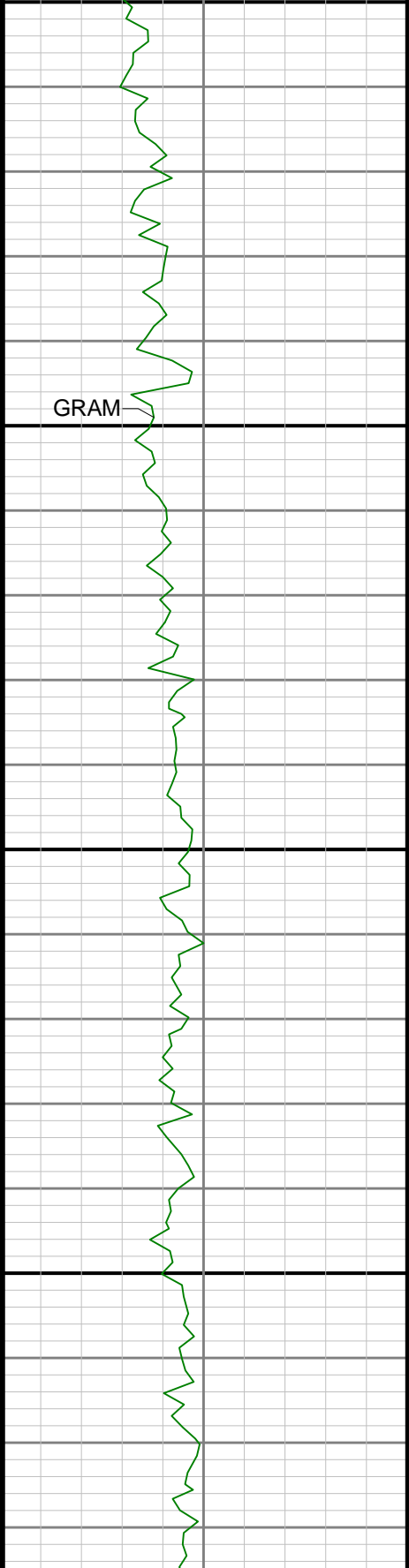




3800

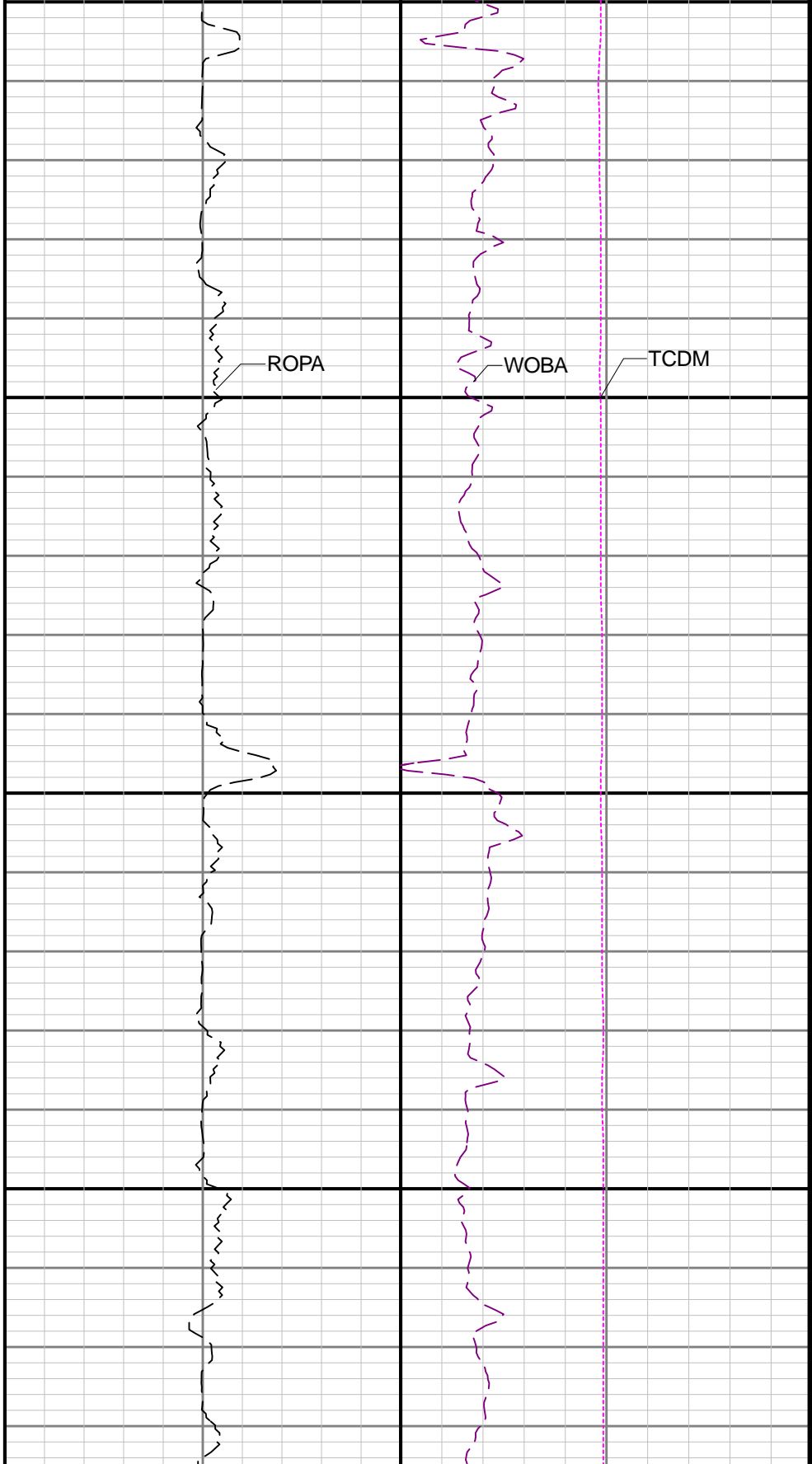
3900

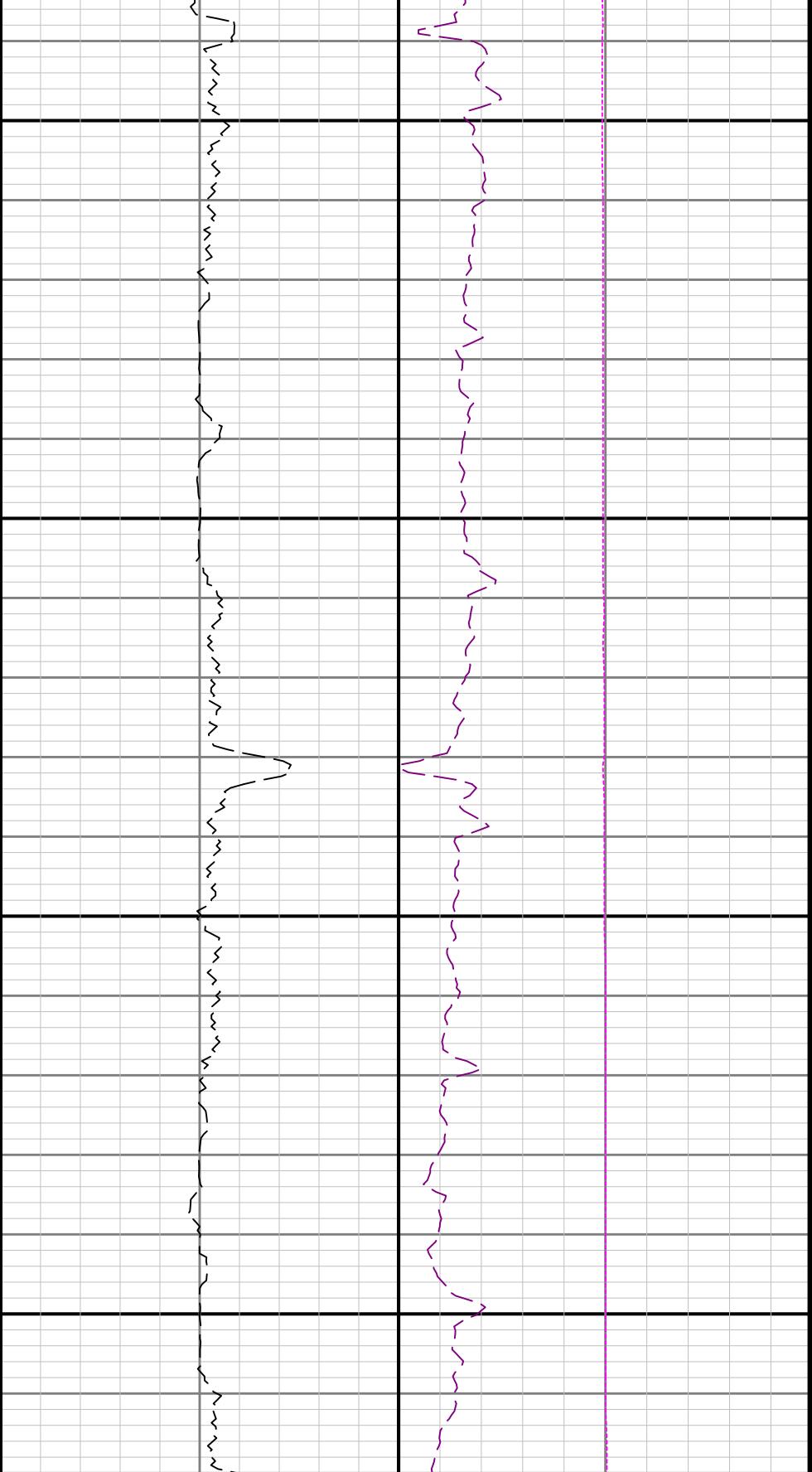




4000

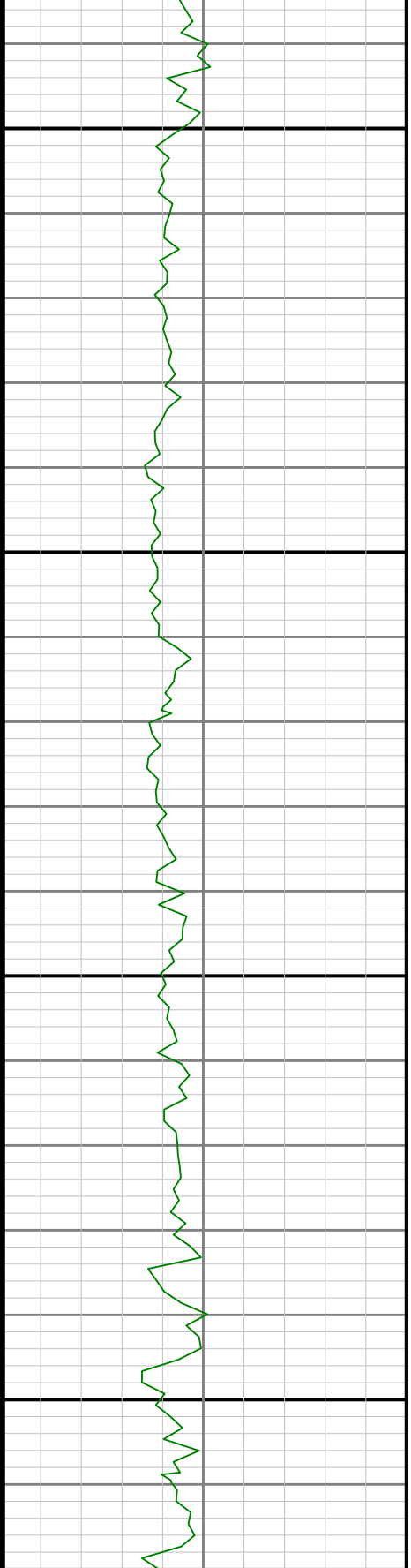
4100

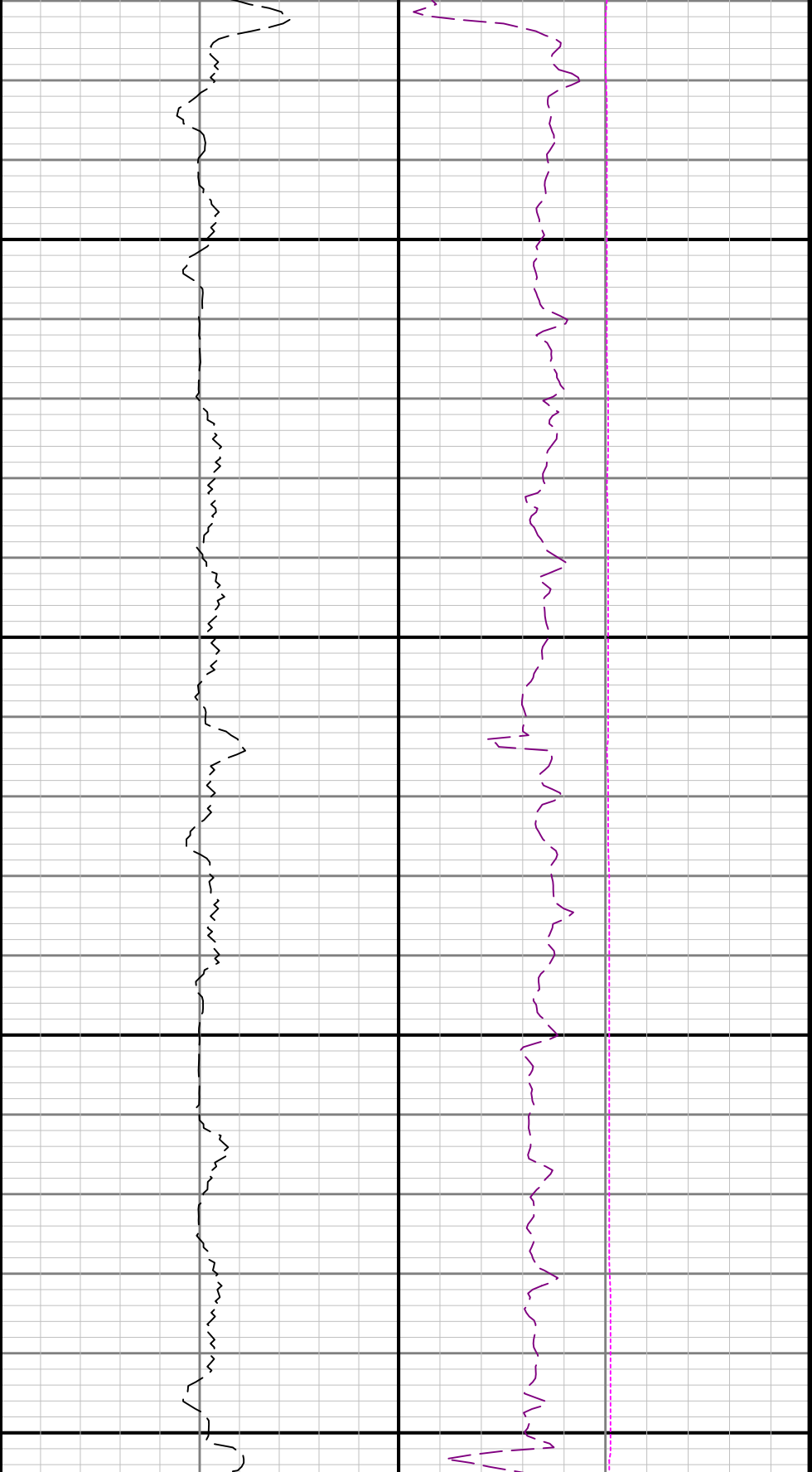




4200

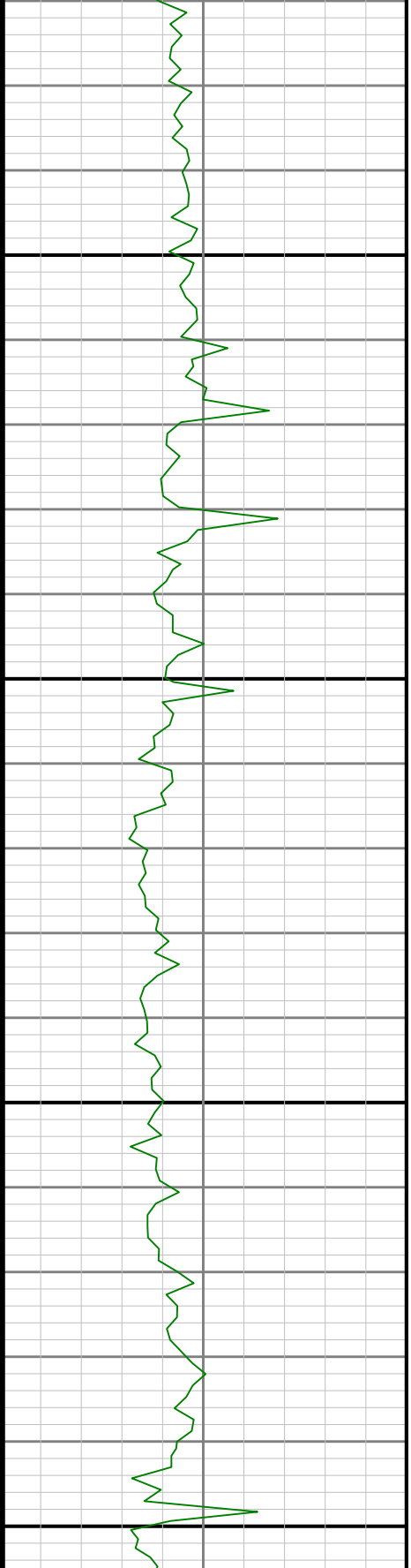
4300

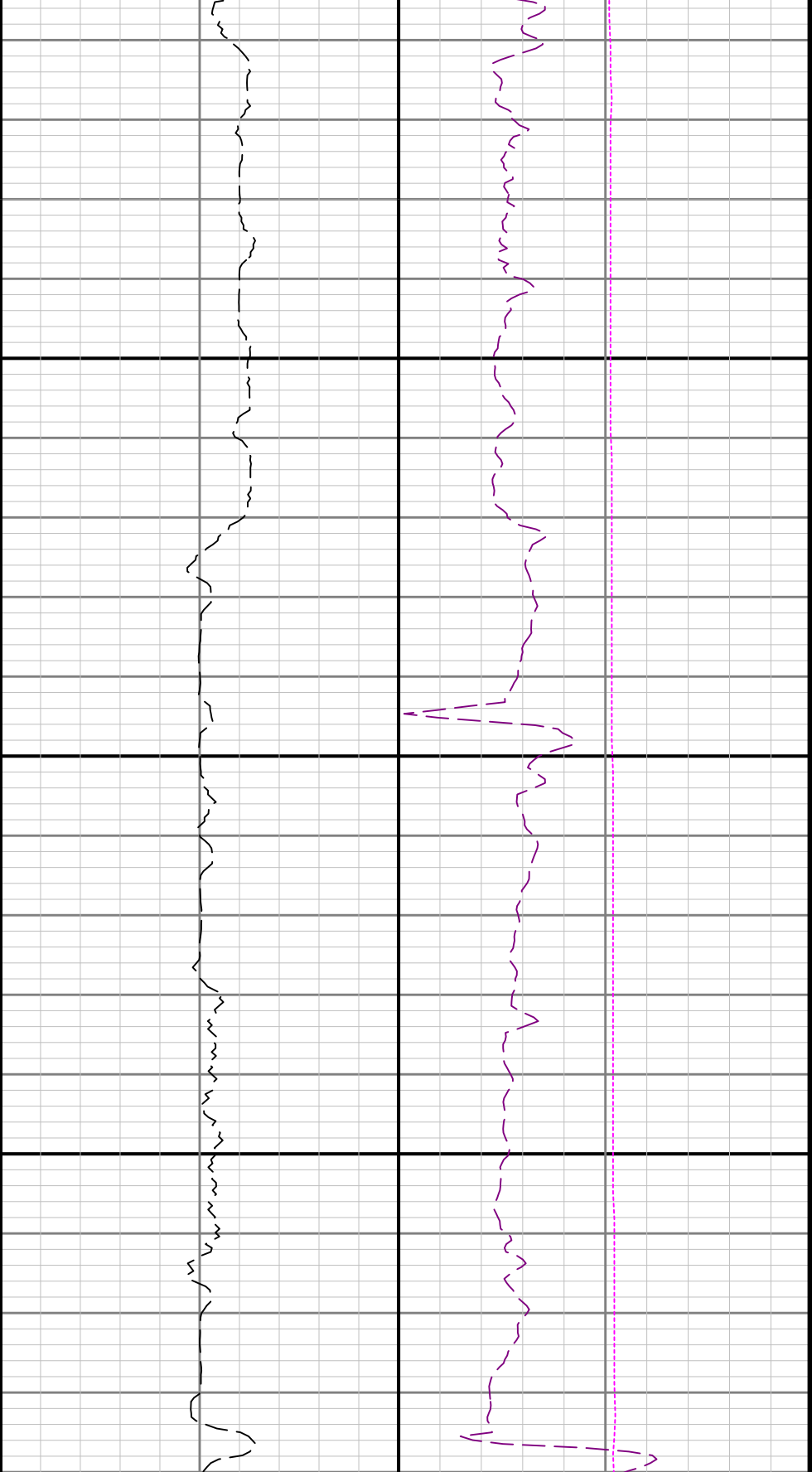




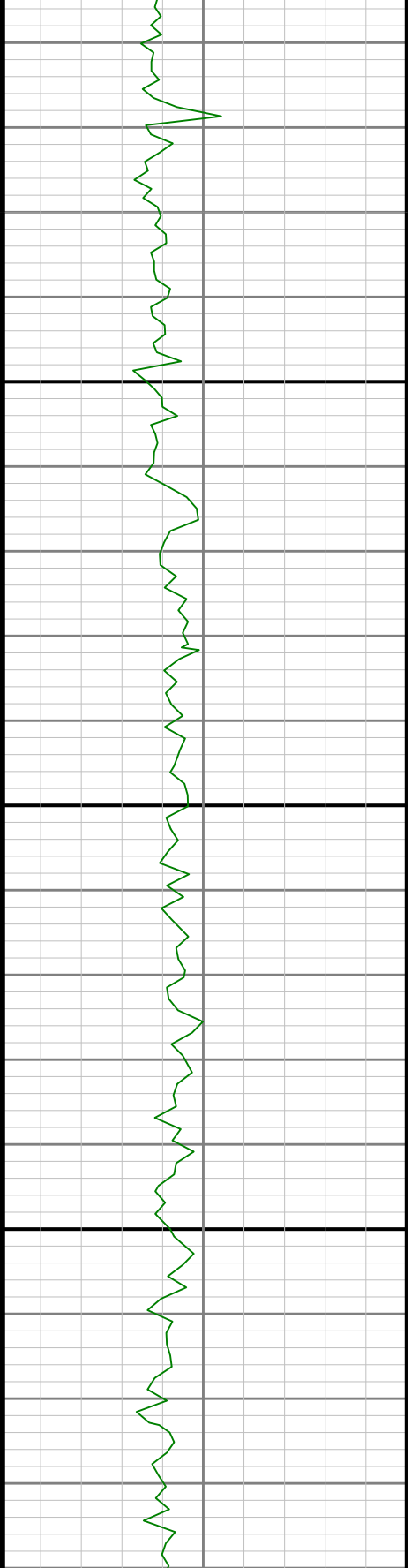
4400

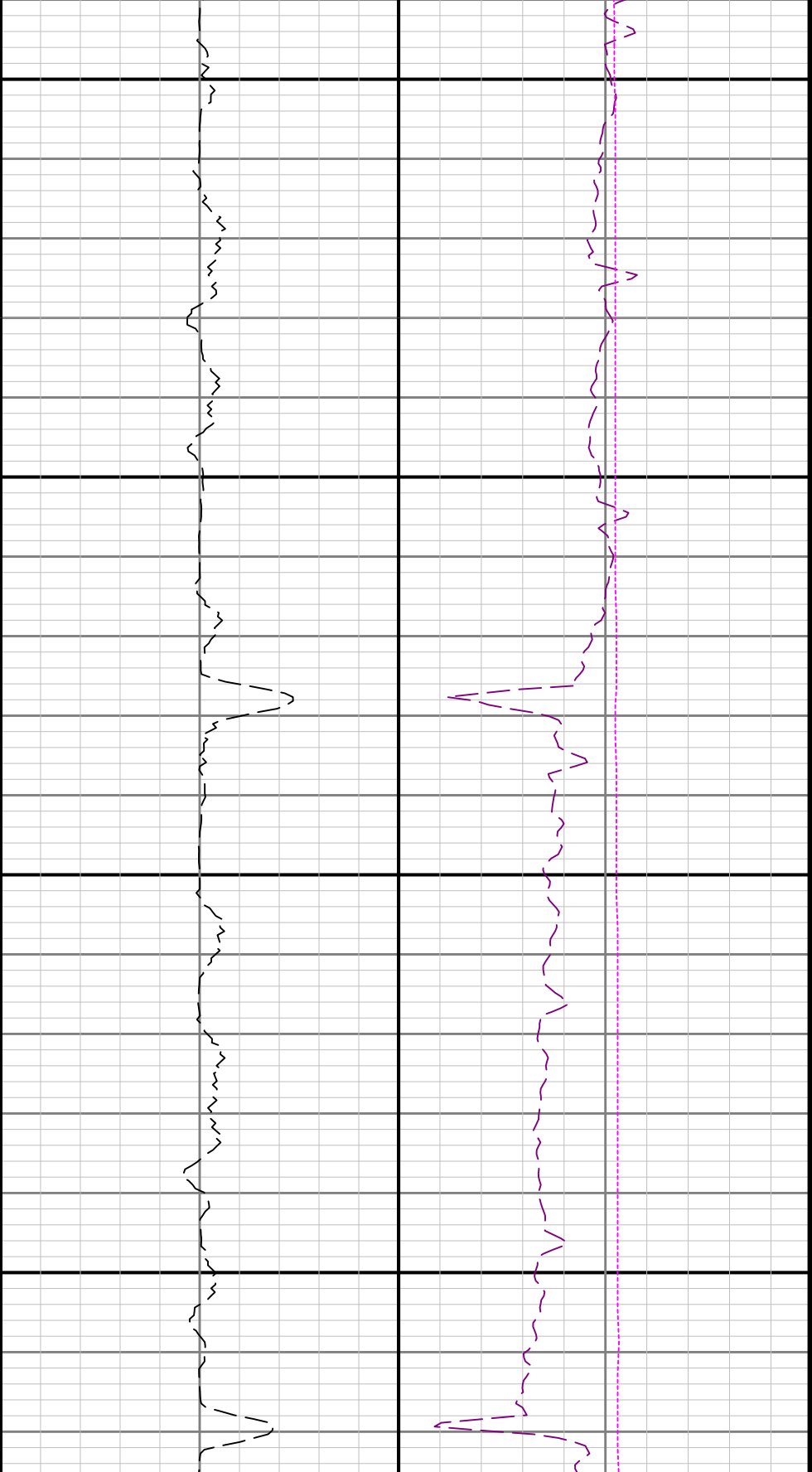
4500





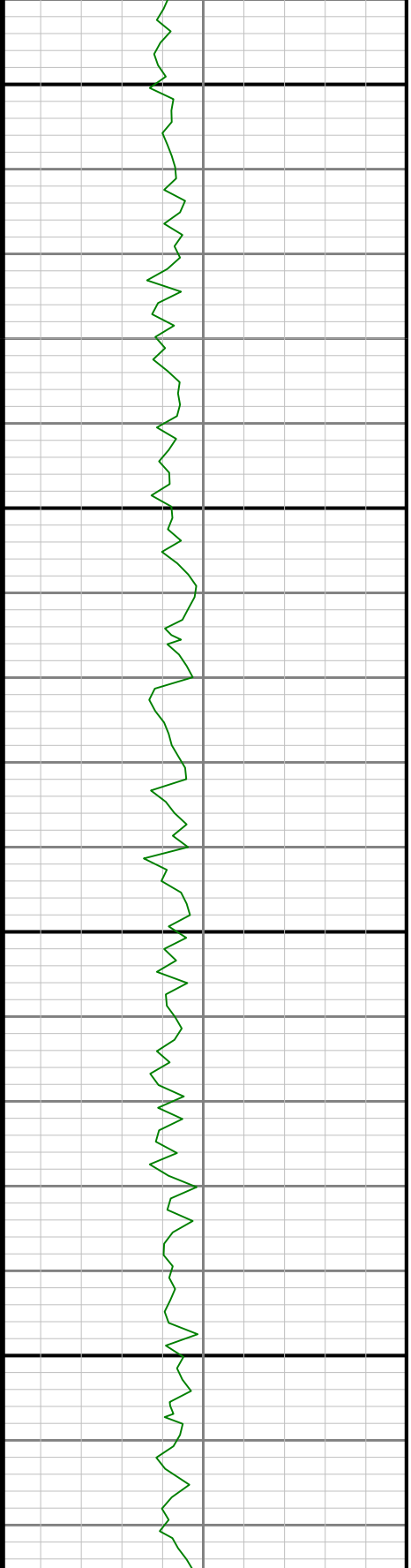
4600

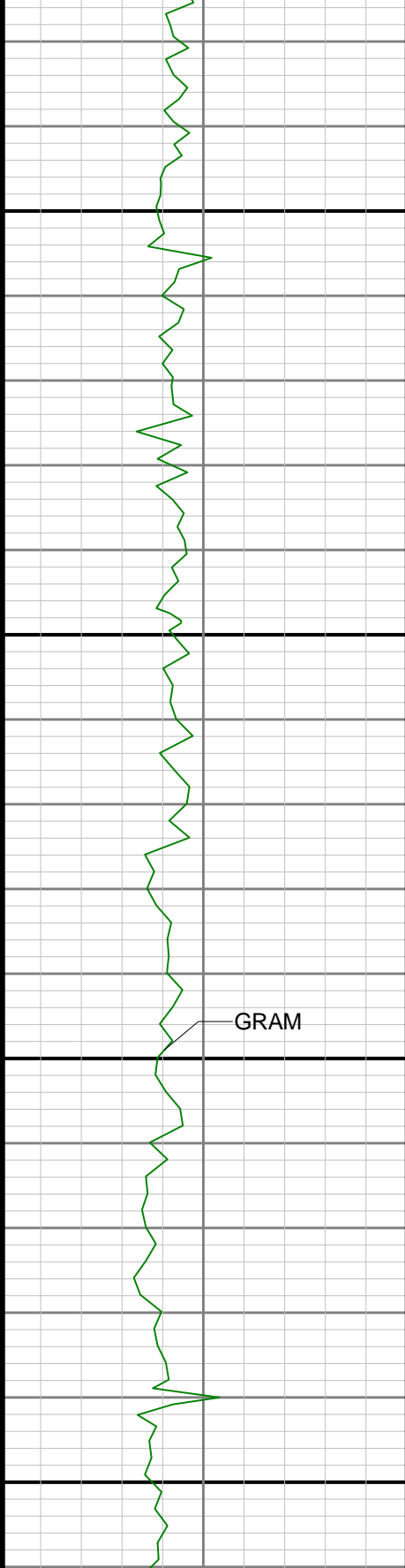




4700

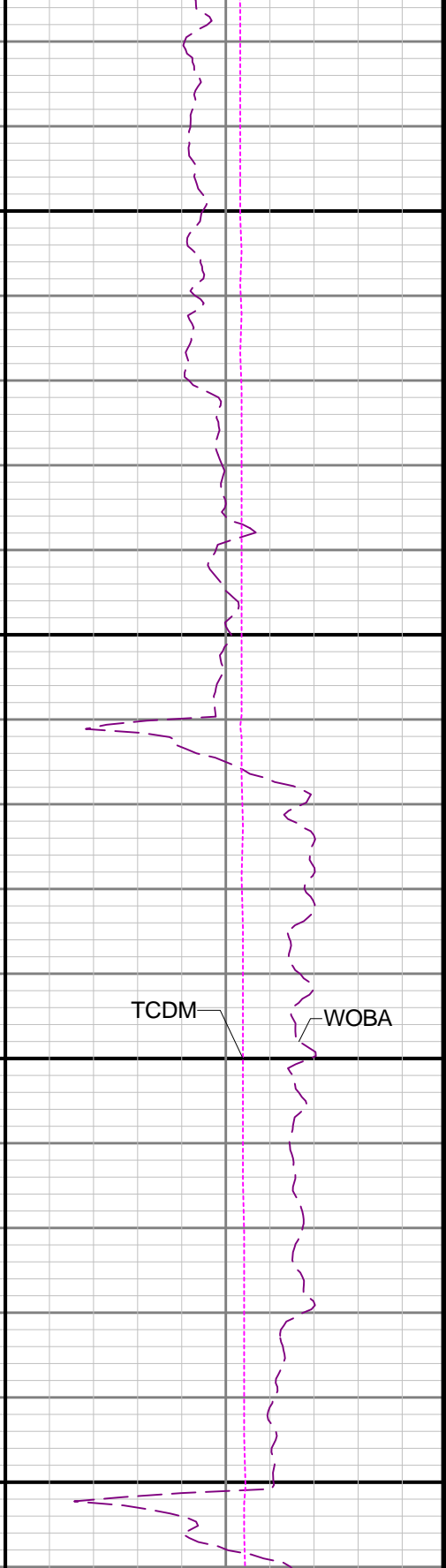
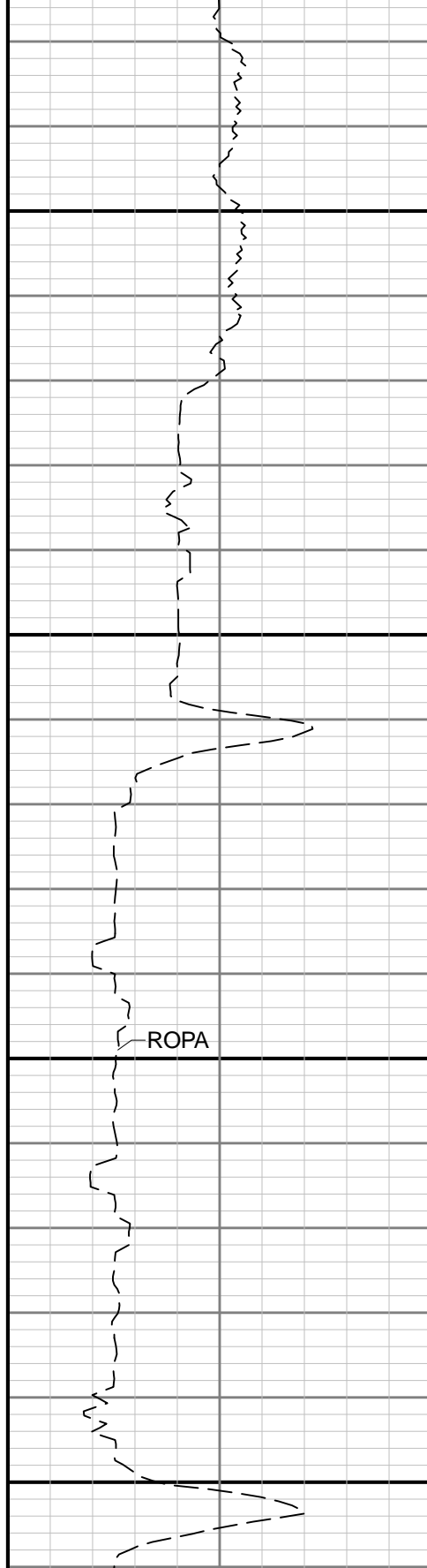
4800

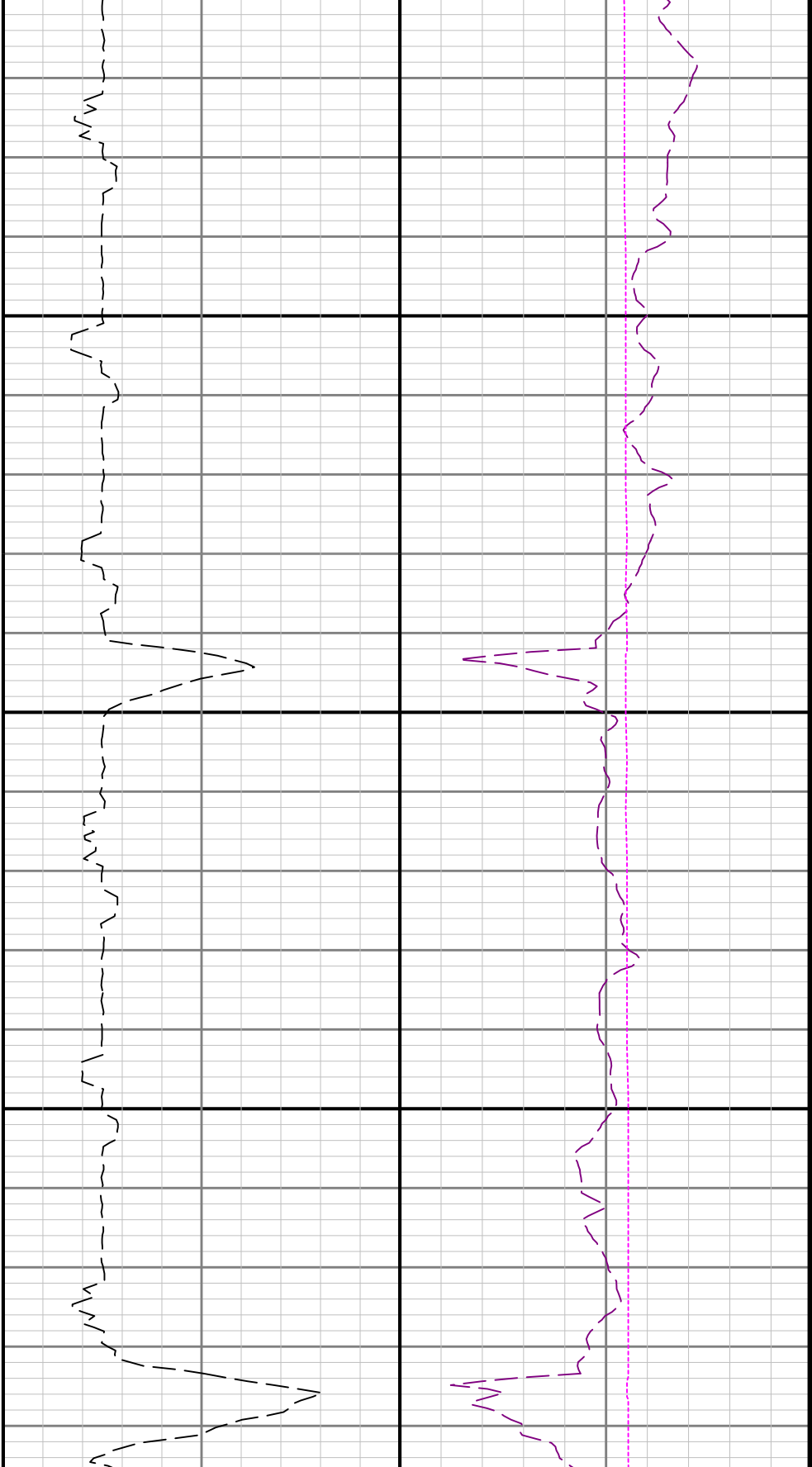




4900

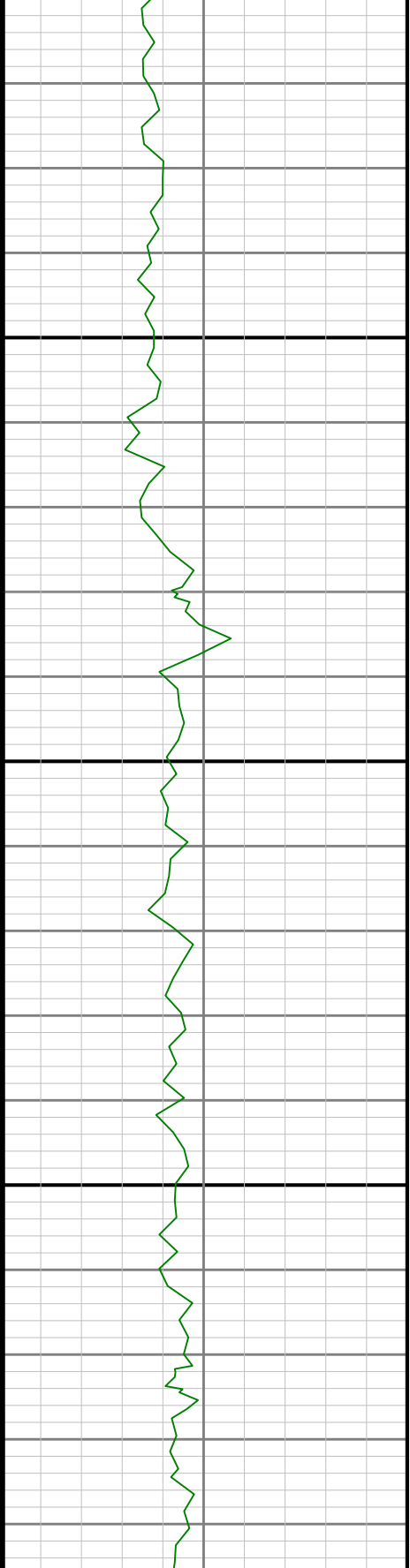
5000

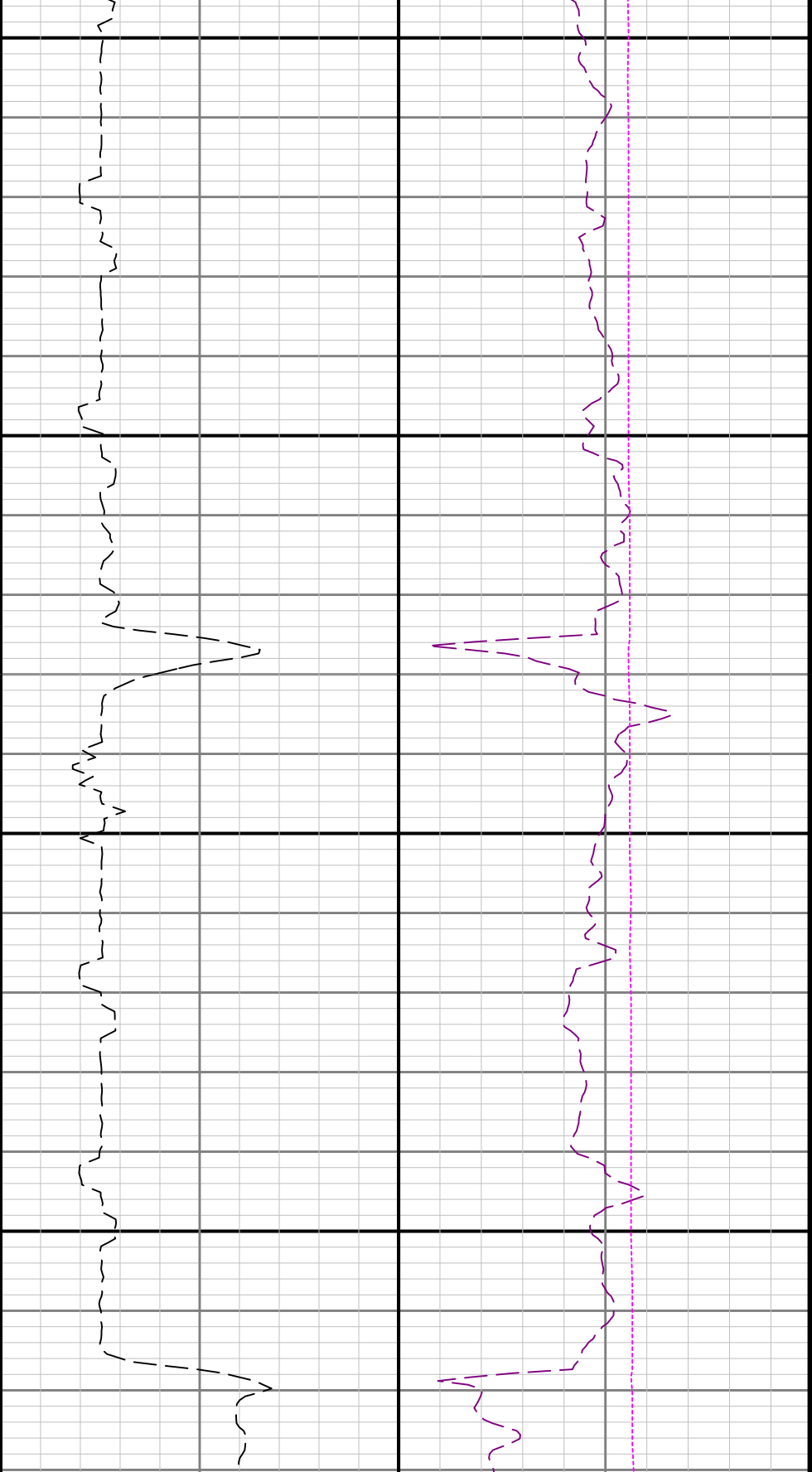




5100

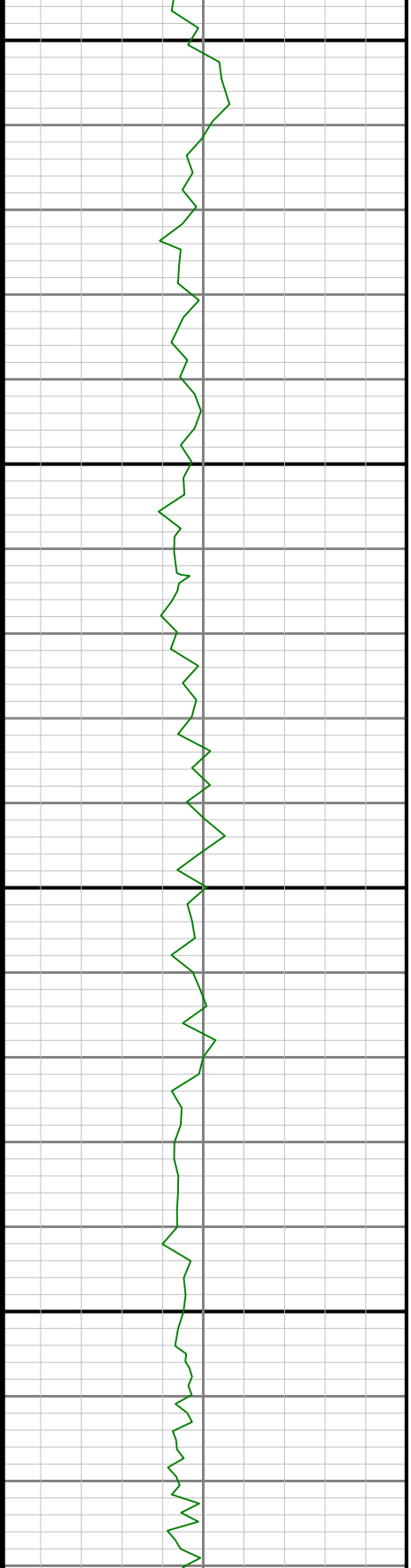
5200

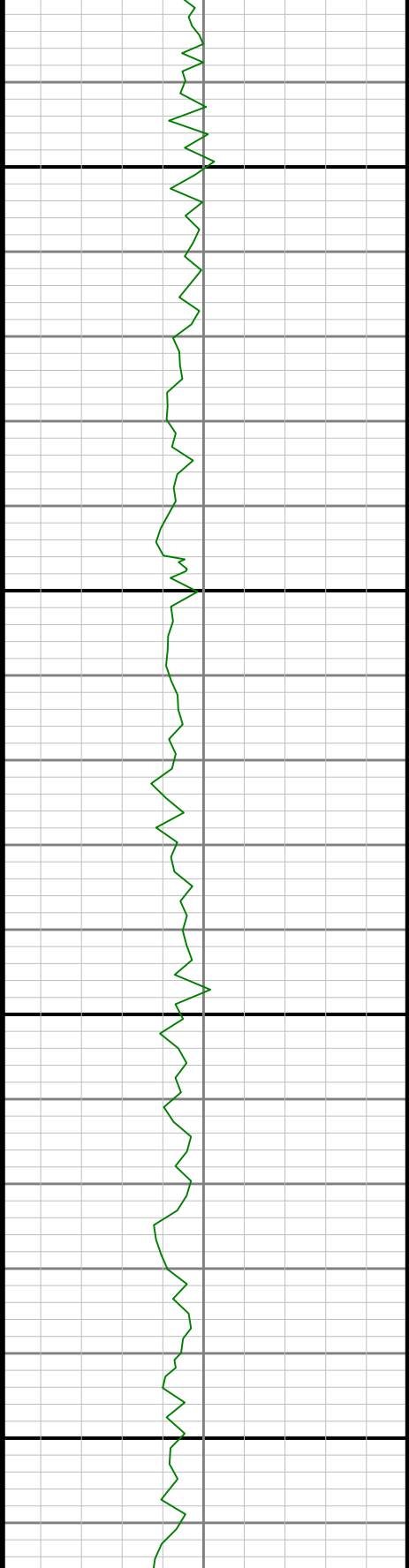




5300

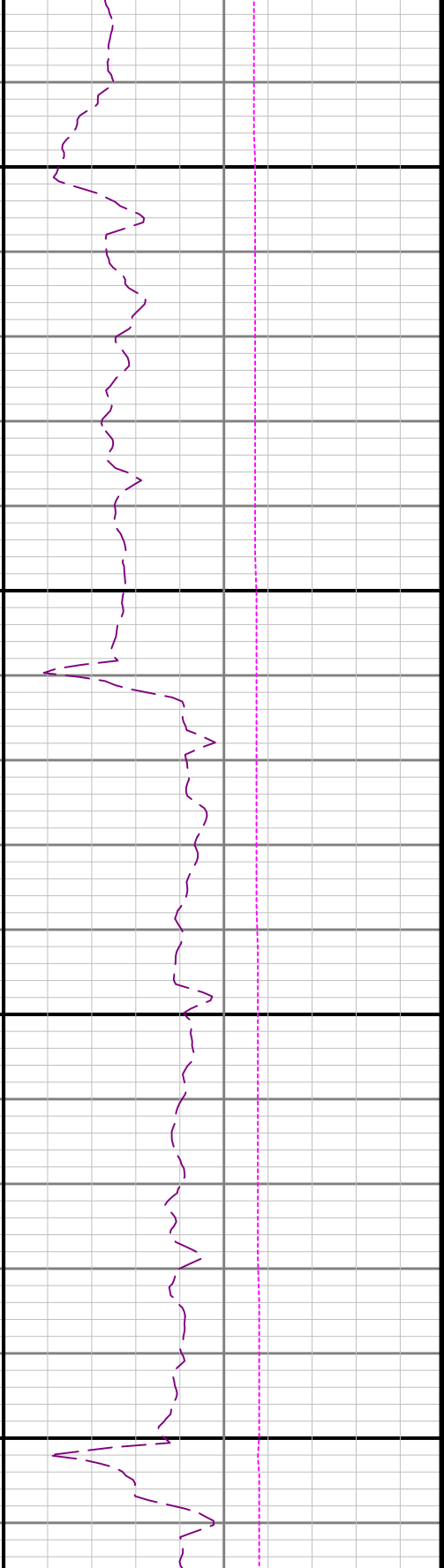
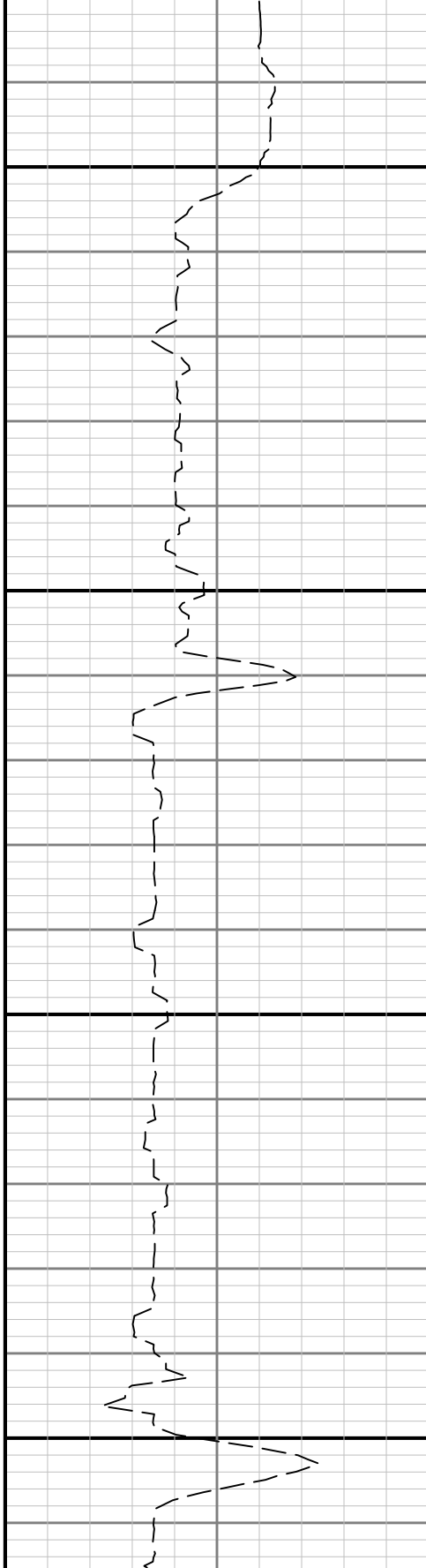
5400





5500

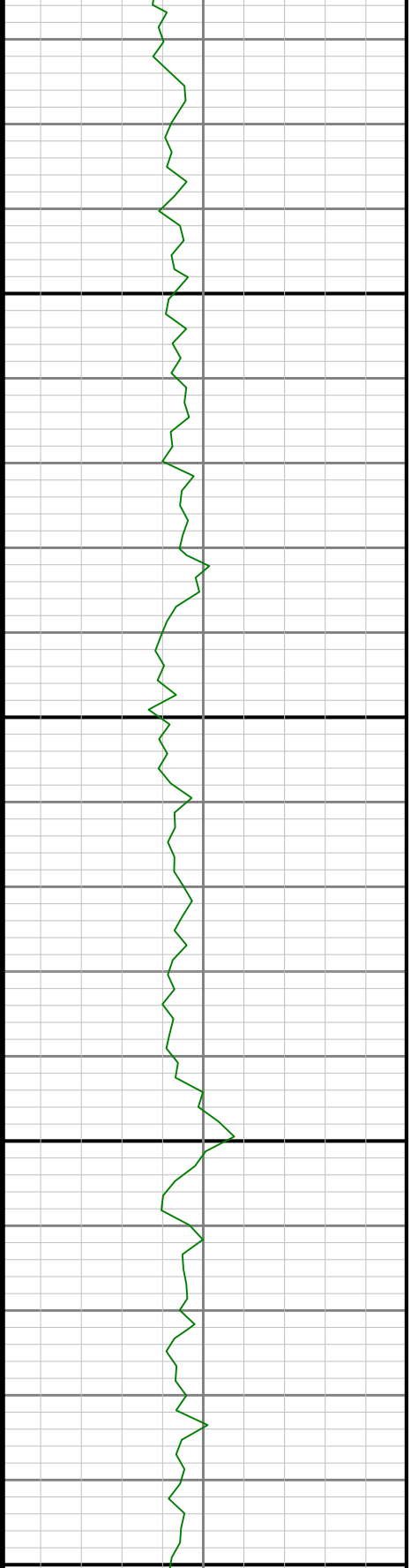
5600

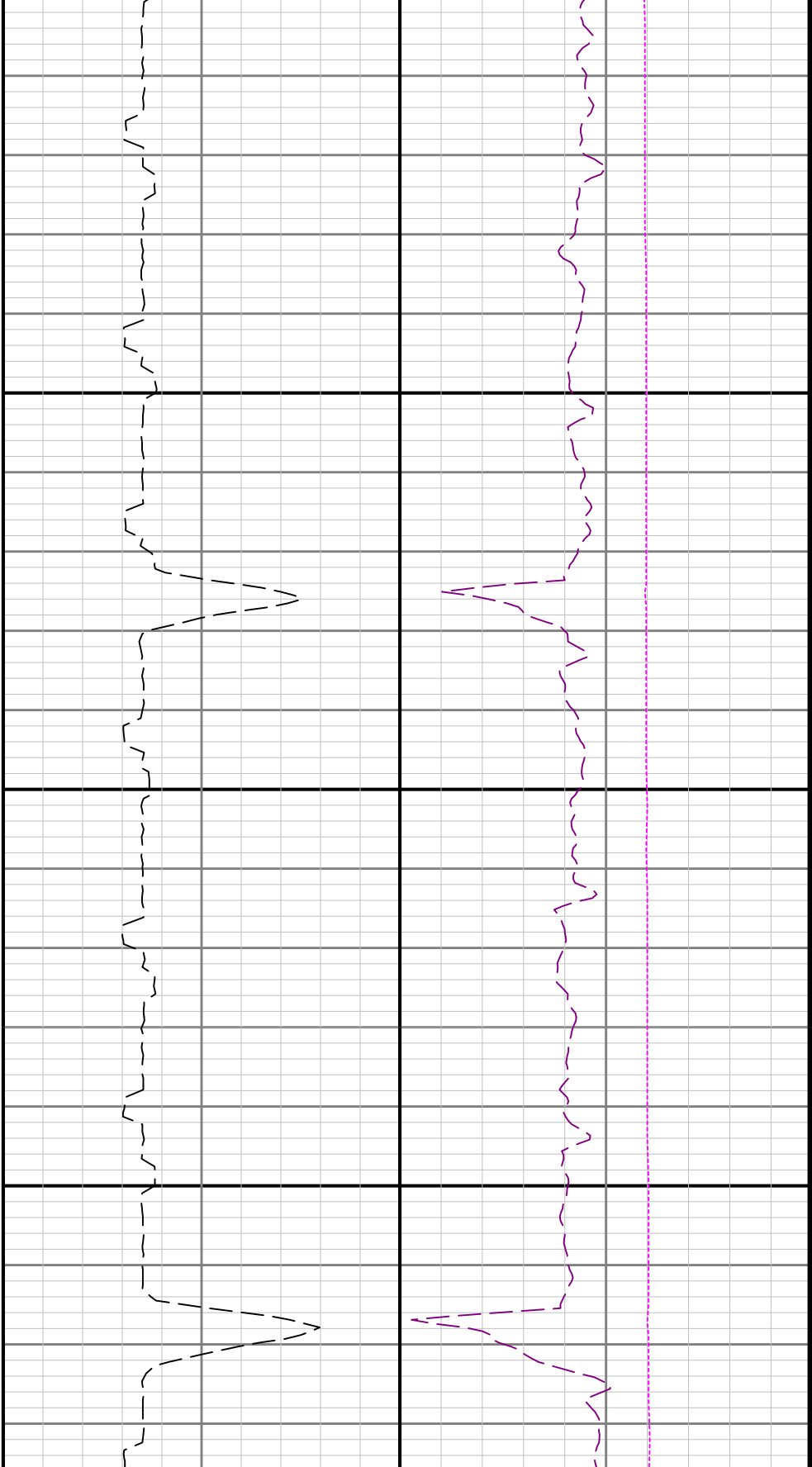




5700

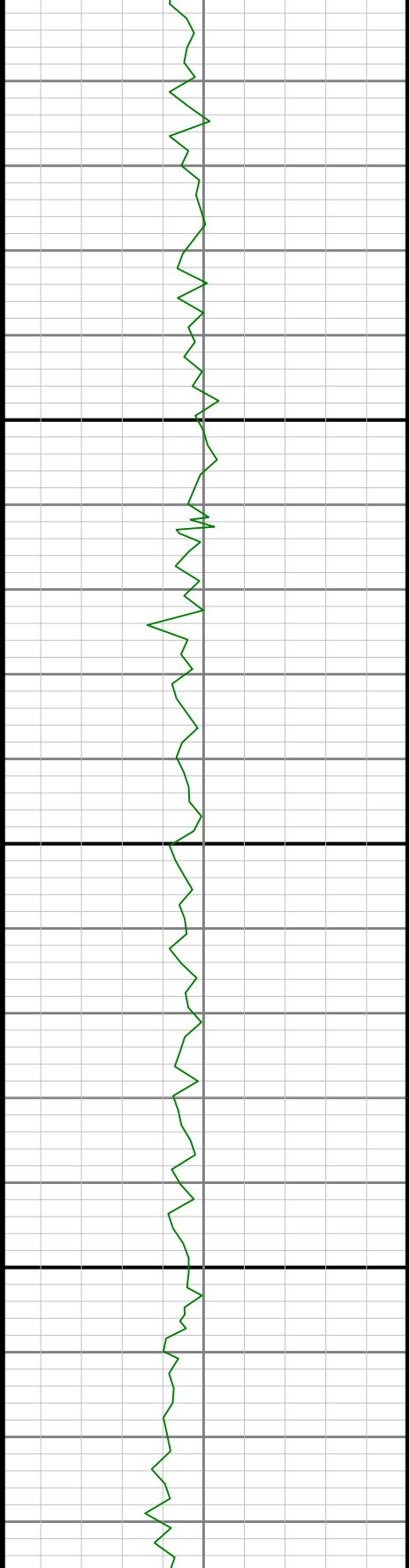
58

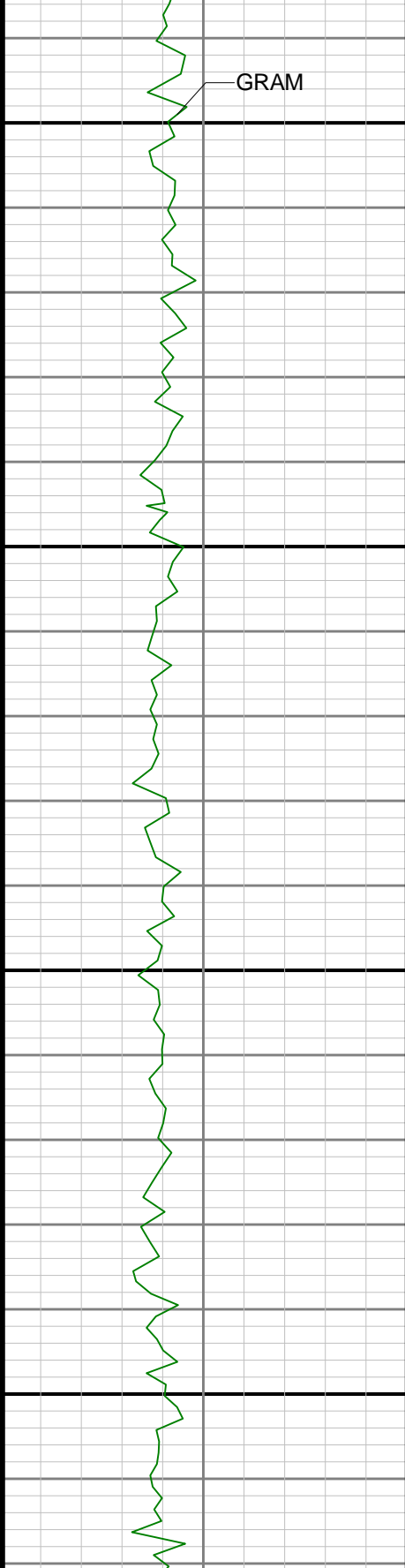




00

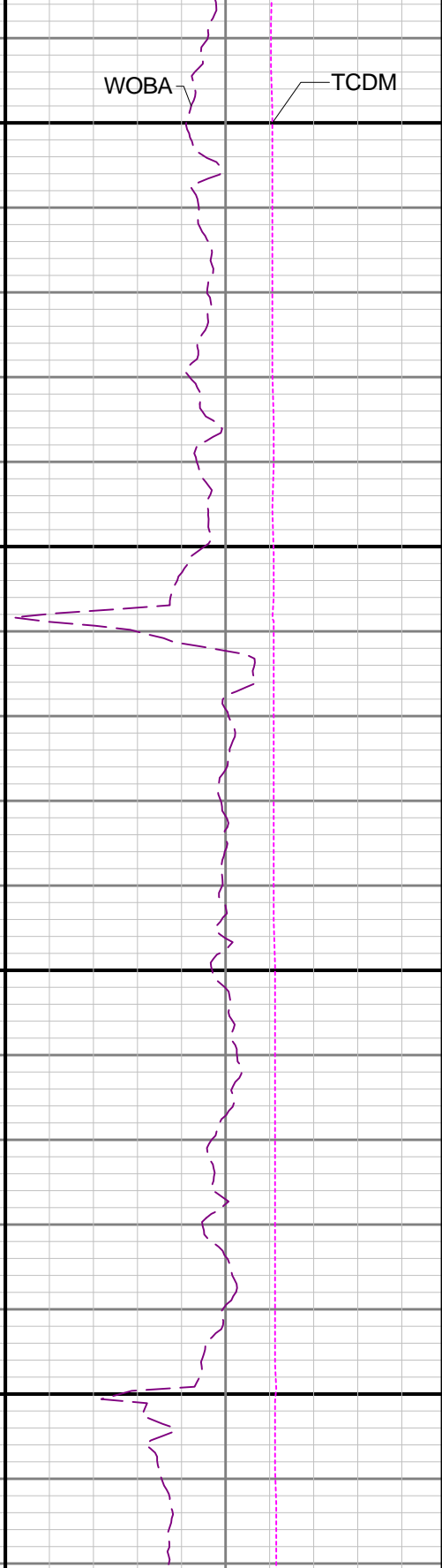
5900

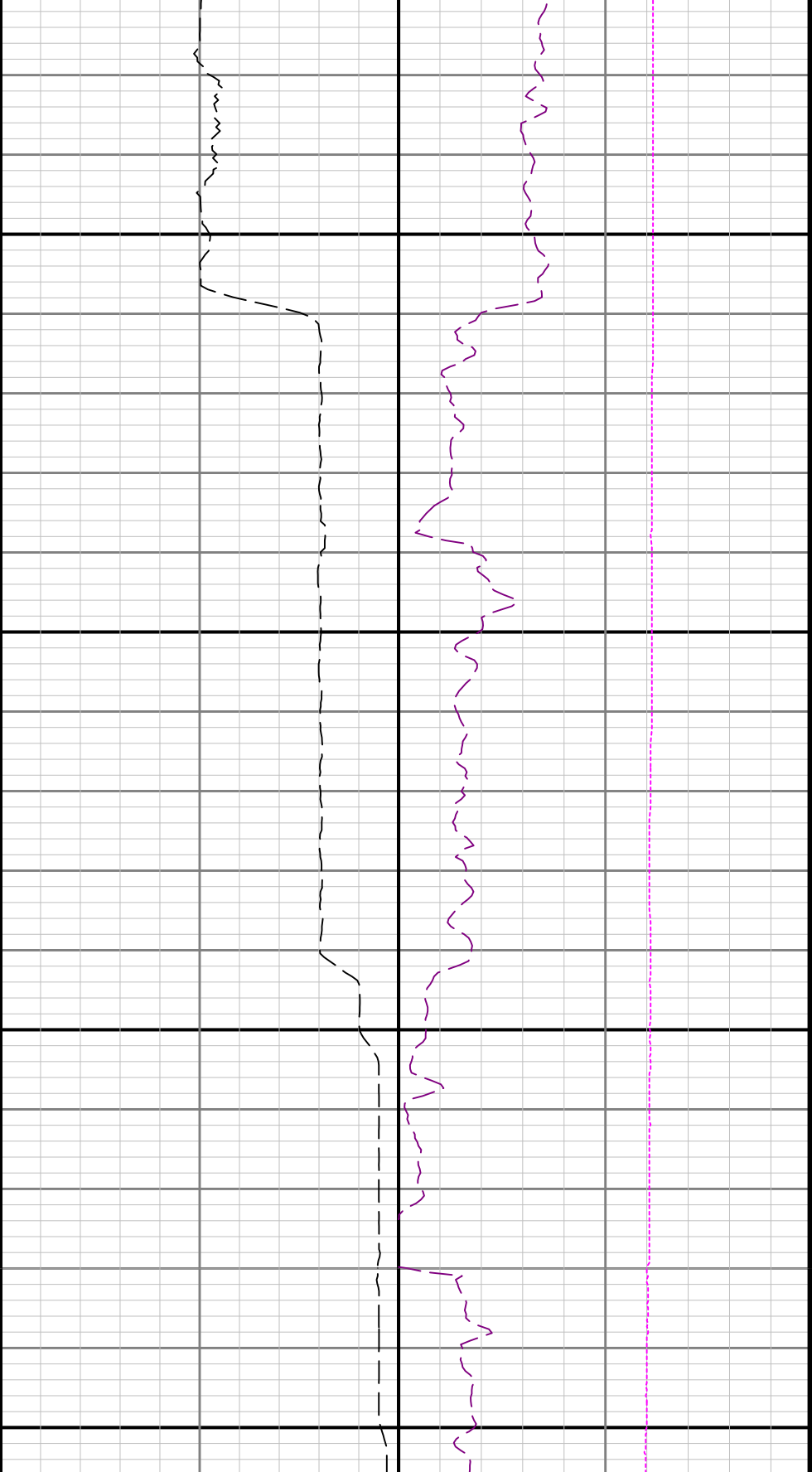




6000

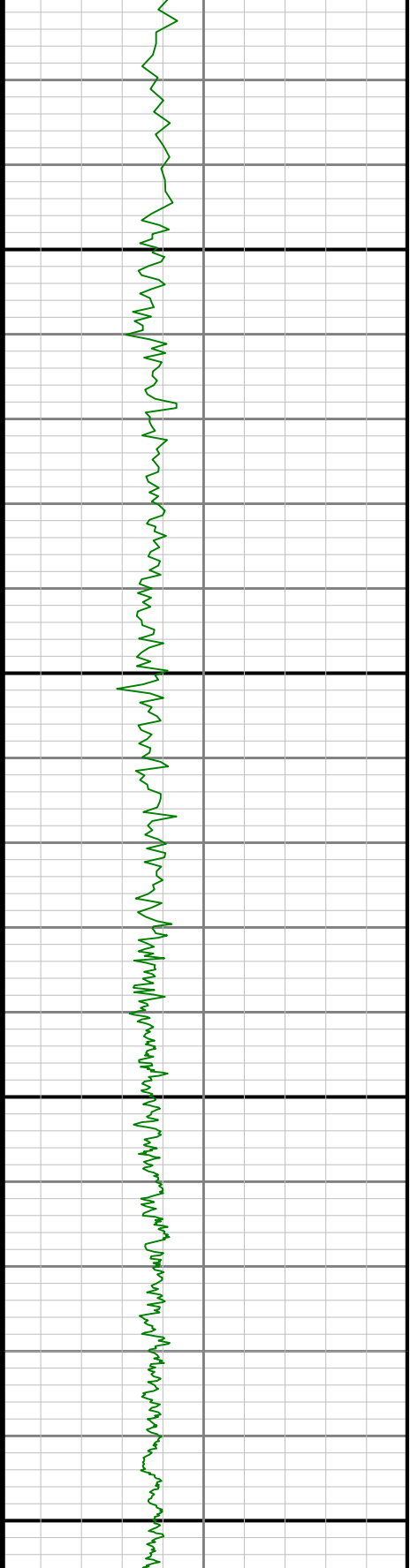
6100

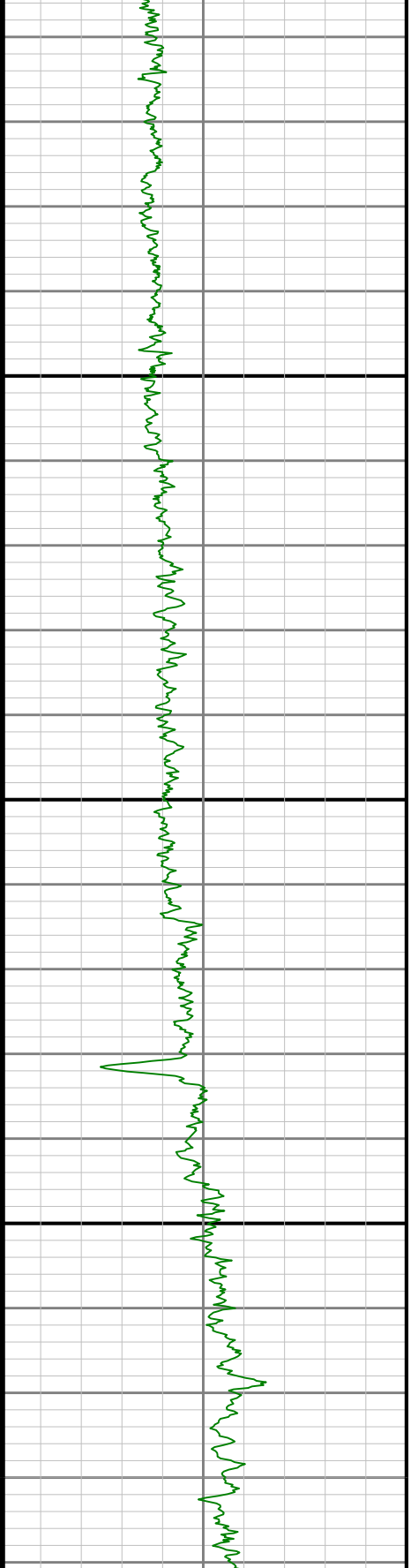


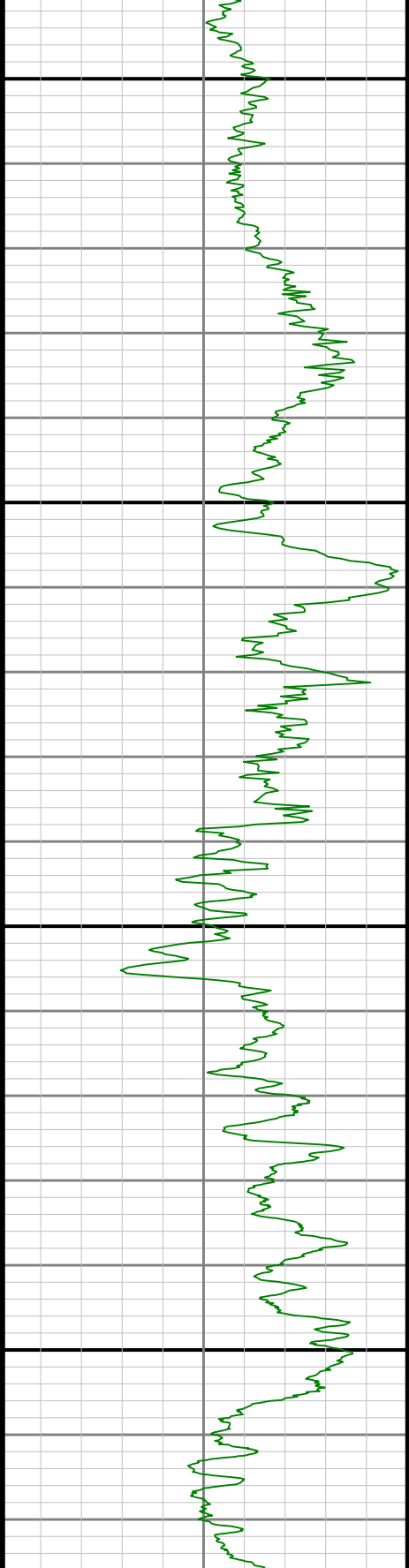


6200

6300

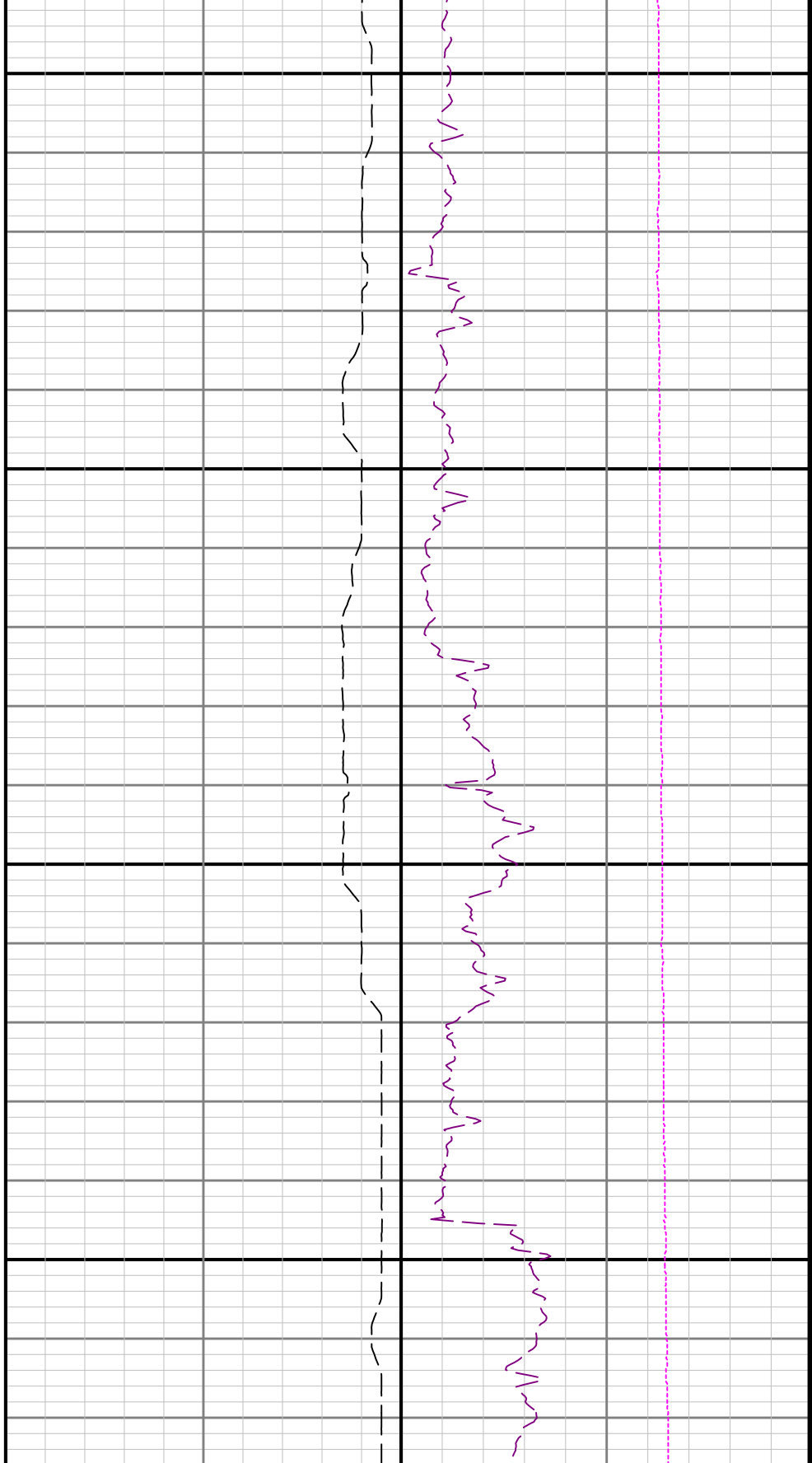


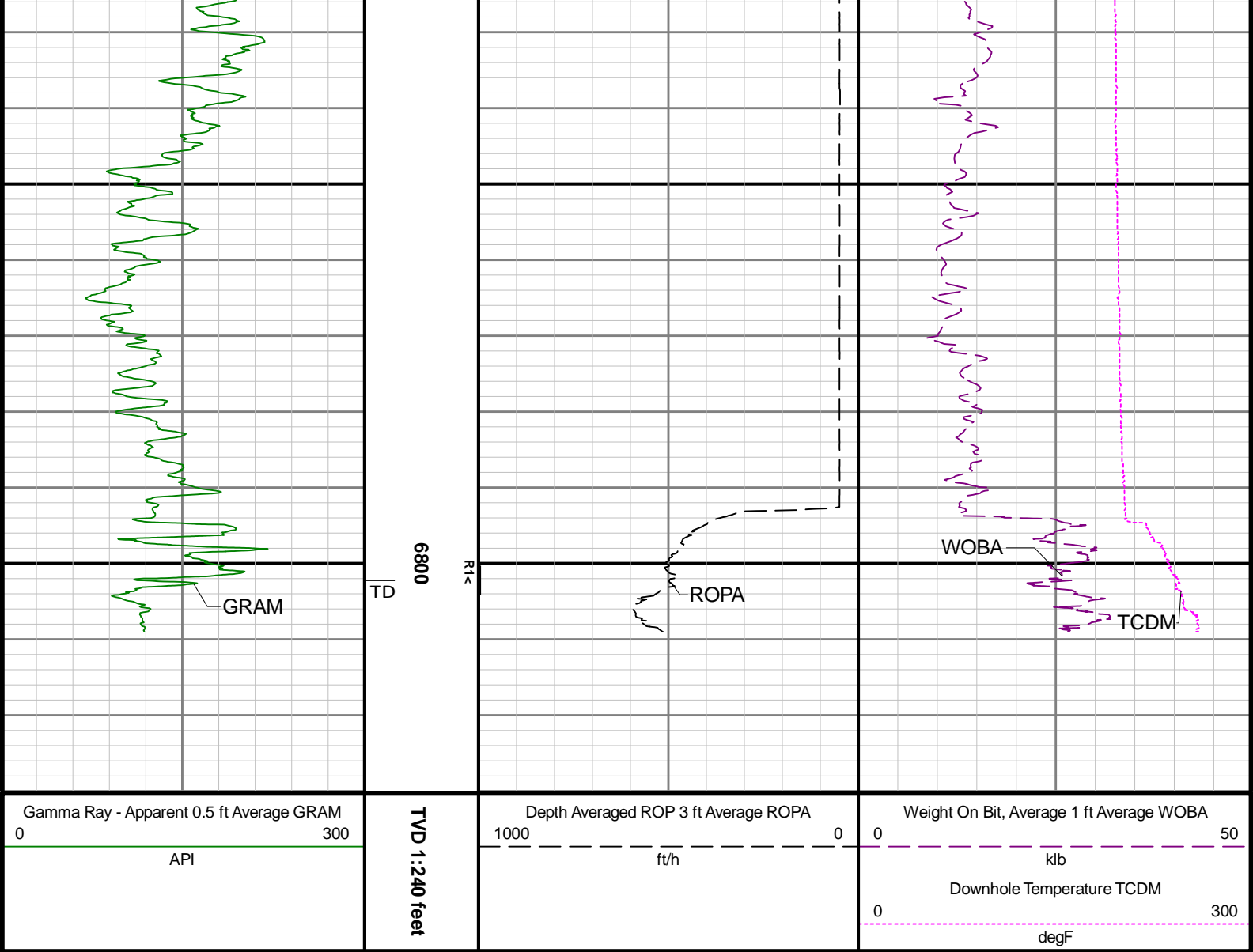




6700

0099





Directional Survey Summary													
Latitude:		40° 27' 57.762" N				Longitude:		104° 33' 39.875" W					
North Reference:		Grid				Drill Depth Zero:		Rig Floor					
Vertical Datum is:		Mean Sea Level				Vertical Datum to DDZ: (ft)		4756.00					
Vertical Section North: (ft)		0.00				Vertical Section East: (ft)		0.00					
Vertical Section Azimuth: (deg)		174.07											
Grid Convergence: (deg)		-0.61				Magnetic Declination: (deg)		7.61					
Total Correction: (deg)		7.00				TVD Calculation Method:		Minimum Curvature					
Magnetic Correction:		Off				Local Magnetic Field: (nT)		51906					
Local Magnetic Dip Angle: (deg)		66.79				Local Gravity Field: (m/s2)		9.800					
Tie-In / Projection	Measured Depth (ft)	Inclination (deg)	Azimuth (deg)	Temperature (degF)	North (ft)	East (ft)	True Vertical Depth (ft)	TVD Subsea (ft)	Vertical Section (ft)	Course Length (ft)	Dog Leg Severity (deg/100ft)	Build Rate (deg/100ft)	Turn Rate (deg/100ft)
Surface	0.00	0.00	0.00	N/A	0.00	0.00	0.00	-4756.00	0.00	0.00	0.00	0.00	0.00
	78.00	0.26	72.14	N/A	0.05	0.17	78.00	-4678.00	-0.04	78.00	0.33	0.33	92.49
	171.00	0.54	1.56	N/A	0.56	0.38	171.00	-4585.00	-0.51	93.00	0.55	0.30	-75.89
	262.00	0.29	273.75	N/A	1.00	0.16	262.00	-4494.00	-0.98	91.00	0.66	-0.27	-96.49
	325.00	0.22	214.93	N/A	0.91	-0.07	325.00	-4431.00	-0.91	63.00	0.41	-0.11	-93.37

		420.00	0.40	127.91	N/A	0.56	0.09	419.99	-4336.01	-0.55	95.00	0.47	0.19	-91.60
		514.00	0.45	345.02	N/A	0.71	0.26	513.99	-4242.01	-0.68	94.00	0.86	0.05	-152.01
		609.00	0.34	340.78	N/A	1.34	0.07	608.99	-4147.01	-1.33	95.00	0.12	-0.12	-4.46
		703.00	0.64	316.99	N/A	1.99	-0.38	702.99	-4053.01	-2.02	94.00	0.38	0.32	-25.31
		798.00	0.54	352.80	N/A	2.82	-0.80	797.98	-3958.02	-2.89	95.00	0.39	-0.11	37.69
		892.00	0.48	341.07	N/A	3.63	-0.99	891.98	-3864.02	-3.71	94.00	0.13	-0.06	-12.48
		987.00	0.28	13.07	N/A	4.23	-1.06	986.98	-3769.02	-4.32	95.00	0.30	-0.21	33.68
		1082.00	0.33	10.99	N/A	4.73	-0.96	1081.98	-3674.02	-4.80	95.00	0.05	0.05	-2.19
		1176.00	0.28	19.89	N/A	5.21	-0.83	1175.97	-3580.03	-5.27	94.00	0.07	-0.05	9.47
		1271.00	0.34	73.94	N/A	5.51	-0.48	1270.97	-3485.03	-5.53	95.00	0.30	0.06	56.89
		1365.00	0.61	91.86	N/A	5.57	0.29	1364.97	-3391.03	-5.51	94.00	0.32	0.29	19.06
		1460.00	0.44	100.00	N/A	5.49	1.16	1459.97	-3296.03	-5.34	95.00	0.19	-0.18	8.57
		1554.00	0.60	119.87	N/A	5.18	1.94	1553.96	-3202.04	-4.95	94.00	0.25	0.17	21.14
		1649.00	0.94	138.68	N/A	4.35	2.88	1648.95	-3107.05	-4.03	95.00	0.44	0.36	19.80
		1743.00	1.07	169.14	N/A	2.91	3.56	1742.94	-3013.06	-2.52	94.00	0.58	0.14	32.40
		1838.00	0.96	202.84	N/A	1.30	3.42	1837.93	-2918.07	-0.94	95.00	0.63	-0.12	35.47
		1869.00	1.03	217.44	N/A	0.84	3.15	1868.92	-2887.08	-0.51	31.00	0.85	0.23	47.10
		1939.00	1.01	242.41	N/A	0.06	2.22	1938.91	-2817.09	0.17	70.00	0.63	-0.03	35.67
		1992.00	0.22	234.25	112.2	-0.22	1.72	1991.91	-2764.09	0.40	53.00	1.50	-1.49	-15.40
		2086.00	0.97	117.90	117.6	-0.70	2.28	2085.90	-2670.10	0.93	94.00	1.15	0.80	-123.78
		2181.00	3.71	117.02	120.3	-2.47	5.73	2180.81	-2575.19	3.05	95.00	2.88	2.88	-0.93
		2276.00	6.76	113.31	123.0	-6.08	13.60	2275.41	-2480.59	7.45	95.00	3.23	3.21	-3.91
		2370.00	5.94	116.99	123.0	-10.48	23.02	2368.83	-2387.17	12.80	94.00	0.97	-0.87	3.91
		2465.00	6.39	114.80	125.7	-14.93	32.20	2463.28	-2292.72	18.17	95.00	0.53	0.47	-2.31
		2559.00	8.57	114.96	125.7	-20.08	43.30	2556.48	-2199.52	24.44	94.00	2.32	2.32	0.17
		2654.00	12.41	114.17	128.4	-27.25	59.03	2649.87	-2106.13	33.20	95.00	4.04	4.04	-0.83
		2749.00	14.80	114.09	128.4	-36.38	79.42	2742.20	-2013.80	44.39	95.00	2.52	2.52	-0.08
		2843.00	15.06	113.04	131.1	-46.06	101.62	2833.02	-1922.98	56.31	94.00	0.40	0.28	-1.12
		2937.00	14.64	114.97	131.1	-55.85	123.63	2923.89	-1832.11	68.33	94.00	0.69	-0.45	2.05
		3032.00	14.90	116.31	133.8	-66.33	145.46	3015.75	-1740.25	81.01	95.00	0.45	0.27	1.41
		3127.00	14.98	117.46	133.8	-77.41	167.30	3107.54	-1648.46	94.28	95.00	0.32	0.08	1.21
		3222.00	14.13	118.24	136.5	-88.56	188.42	3199.49	-1556.51	107.55	95.00	0.92	-0.89	0.82
		3316.00	14.71	118.18	136.5	-99.62	209.04	3290.52	-1465.48	120.69	94.00	0.62	0.62	-0.06
		3411.00	14.65	118.27	139.2	-111.01	230.26	3382.42	-1373.58	134.20	95.00	0.07	-0.06	0.09
		3506.00	14.25	117.02	139.2	-122.01	251.25	3474.42	-1281.58	147.32	95.00	0.53	-0.42	-1.32
		3600.00	14.45	117.52	141.9	-132.69	271.96	3565.48	-1190.52	160.07	94.00	0.25	0.21	0.53
		3695.00	14.89	116.39	141.9	-143.59	293.41	3657.39	-1098.61	173.13	95.00	0.55	0.46	-1.19
		3789.00	14.82	116.96	141.9	-154.41	314.94	3748.25	-1007.75	186.12	94.00	0.17	-0.07	0.61
		3884.00	14.61	117.65	144.6	-165.47	336.38	3840.13	-915.87	199.34	95.00	0.29	-0.22	0.73
		3979.00	14.70	117.62	144.6	-176.62	357.68	3932.04	-823.96	212.63	95.00	0.10	0.09	-0.03
		4074.00	14.64	117.41	144.6	-187.74	379.01	4023.94	-732.06	225.89	95.00	0.08	-0.06	-0.22
		4168.00	14.65	117.66	147.3	-198.72	400.09	4114.89	-641.11	239.00	94.00	0.07	0.01	0.27
		4263.00	14.68	117.95	147.3	-209.94	421.36	4206.79	-549.21	252.35	95.00	0.08	0.03	0.31
		4357.00	14.73	118.28	150.0	-221.19	442.41	4297.71	-458.29	265.71	94.00	0.10	0.05	0.35
		4452.00	14.71	117.99	152.7	-232.57	463.69	4389.60	-366.40	279.23	95.00	0.08	-0.02	-0.31
		4546.00	14.55	118.03	152.7	-243.72	484.65	4480.55	-275.45	292.49	94.00	0.17	-0.17	0.04
		4641.00	14.83	118.41	155.4	-255.11	505.88	4572.44	-183.56	306.01	95.00	0.31	0.29	0.40
		4735.00	15.00	118.39	155.4	-266.62	527.16	4663.28	-92.72	319.66	94.00	0.18	0.18	-0.02
		4830.00	15.23	118.04	158.1	-278.33	548.99	4754.99	-1.01	333.56	95.00	0.26	0.24	-0.37
		4924.00	15.14	118.27	158.1	-289.95	570.70	4845.71	89.71	347.36	94.00	0.12	-0.10	0.24
		5019.00	14.96	118.39	160.8	-301.66	592.41	4937.45	181.45	361.25	95.00	0.19	-0.19	0.13
		5113.00	15.46	117.68	163.5	-313.24	614.18	5028.16	272.16	375.02	94.00	0.57	0.53	-0.76
		5207.00	15.52	117.91	163.5	-324.95	636.39	5118.74	362.74	388.96	94.00	0.09	0.06	0.24
		5302.00	13.98	120.17	166.2	-336.67	657.54	5210.61	454.61	402.80	95.00	1.73	-1.62	2.38
		5397.00	14.49	119.75	166.2	-348.33	677.78	5302.69	546.69	416.49	95.00	0.55	0.54	-0.44
		5586.00	14.84	119.28	171.6	-371.90	719.42	5485.53	729.53	444.24	189.00	0.20	0.19	-0.25
		5681.00	14.83	119.15	174.3	-383.77	740.65	5577.37	821.37	458.24	95.00	0.04	-0.01	-0.14
		5775.00	14.77	118.43	174.3	-395.34	761.70	5668.25	912.25	471.92	94.00	0.21	-0.06	-0.77
		5870.00	14.87	118.97	177.0	-407.01	783.01	5760.09	1004.09	485.73	95.00	0.18	0.11	0.57
		5965.00	14.98	117.89	179.7	-418.66	804.53	5851.88	1095.88	499.53	95.00	0.31	0.12	-1.14
		6059.00	14.83	119.00	179.7	-430.17	825.79	5942.72	1186.72	513.18	94.00	0.34	-0.16	1.18
		6154.00	14.47	118.55	182.5	-441.74	846.84	6034.63	1278.63	526.86	95.00	0.40	-0.38	-0.47

	6248.00	13.63	119.05	182.5	-452.73	866.84	6125.82	1369.82	539.86	94.00	0.90	-0.89	0.53
	6343.00	13.83	118.18	182.5	-463.53	886.64	6218.11	1462.11	552.65	95.00	0.30	0.21	-0.92
	6437.00	14.68	140.39	179.7	-478.02	904.15	6309.28	1553.28	568.87	94.00	5.85	0.90	23.63
	6532.00	22.93	150.71	179.7	-503.48	920.91	6399.15	1643.15	595.93	95.00	9.33	8.68	10.86
	6626.00	31.73	154.03	185.2	-541.75	940.73	6482.58	1726.58	636.04	94.00	9.50	9.36	3.53
	6721.00	40.59	156.48	187.9	-592.65	964.05	6559.21	1803.21	689.08	95.00	9.45	9.33	2.58
	6815.00	49.08	160.76	187.9	-654.35	988.01	6625.83	1869.83	752.92	94.00	9.58	9.03	4.55
	6910.00	56.43	164.94	190.6	-726.58	1010.16	6683.30	1927.30	827.05	95.00	8.49	7.74	4.40
	7005.00	64.58	170.28	196.0	-807.26	1027.72	6730.06	1974.06	909.12	95.00	9.87	8.58	5.62
	7099.00	72.77	175.78	196.0	-894.08	1038.22	6764.24	2008.24	996.55	94.00	10.27	8.71	5.85
	7194.00	80.47	179.44	201.4	-986.33	1042.02	6786.21	2030.21	1088.71	95.00	8.93	8.11	3.88
	7288.00	89.72	182.63	204.1	-1079.86	1040.31	6794.24	2038.24	1181.56	94.00	10.40	9.84	3.39
	7383.00	89.85	181.19	209.5	-1174.80	1037.15	6794.60	2038.60	1275.67	95.00	1.52	0.14	-1.52
	7478.00	90.74	179.69	212.2	-1269.79	1036.42	6794.11	2038.11	1370.08	95.00	1.84	0.94	-1.58
	7572.00	90.25	180.59	214.9	-1363.79	1036.19	6793.30	2037.30	1463.54	94.00	1.09	-0.52	0.96
	7667.00	90.46	177.25	209.5	-1458.76	1037.98	6792.71	2036.71	1558.19	95.00	3.52	0.22	-3.52
	7761.00	89.88	175.50	214.9	-1552.56	1043.92	6792.43	2036.43	1652.11	94.00	1.96	-0.62	-1.86
	7856.00	89.45	180.09	214.9	-1647.47	1047.57	6792.98	2036.98	1746.88	95.00	4.85	-0.45	4.83
	7951.00	89.32	181.95	217.6	-1742.44	1045.88	6794.00	2038.00	1841.17	95.00	1.96	-0.14	1.96
	8045.00	89.45	183.84	217.6	-1836.31	1041.14	6795.01	2039.01	1934.05	94.00	2.02	0.14	2.01
	8140.00	89.57	181.99	220.3	-1931.18	1036.31	6795.83	2039.83	2027.91	95.00	1.95	0.13	-1.95
	8235.00	89.69	184.30	223.0	-2026.03	1031.09	6796.44	2040.44	2121.71	95.00	2.43	0.13	2.43
	8330.00	89.60	184.24	223.0	-2120.77	1024.02	6797.03	2041.03	2215.21	95.00	0.11	-0.09	-0.06
	8424.00	90.06	181.88	225.7	-2214.62	1019.00	6797.31	2041.31	2308.05	94.00	2.56	0.49	-2.51
	8518.00	90.31	182.19	228.4	-2308.56	1015.66	6797.00	2041.00	2401.14	94.00	0.42	0.27	0.33
	8612.00	89.48	181.37	228.4	-2402.52	1012.75	6797.18	2041.18	2494.29	94.00	1.24	-0.88	-0.87
	8707.00	89.78	180.19	228.4	-2497.50	1011.45	6797.79	2041.79	2588.64	95.00	1.28	0.32	-1.24
	8801.00	89.78	180.57	231.1	-2591.50	1010.83	6798.15	2042.15	2682.07	94.00	0.40	0.00	0.40
	8896.00	89.54	179.35	233.8	-2686.50	1010.89	6798.71	2042.71	2776.56	95.00	1.31	-0.25	-1.28
	8990.00	89.82	176.40	233.8	-2780.42	1014.38	6799.24	2043.24	2870.34	94.00	3.15	0.30	-3.14
	9085.00	89.69	176.80	233.8	-2875.25	1020.01	6799.65	2043.65	2965.25	95.00	0.44	-0.14	0.42
	9180.00	89.41	177.21	236.5	-2970.12	1024.98	6800.39	2044.39	3060.12	95.00	0.52	-0.29	0.43
	9274.00	89.57	177.20	236.5	-3064.00	1029.56	6801.23	2045.23	3153.98	94.00	0.17	0.17	-0.01
	9369.00	90.18	175.78	239.2	-3158.82	1035.38	6801.44	2045.44	3248.89	95.00	1.63	0.64	-1.49
	9464.00	89.63	177.22	239.2	-3253.64	1041.18	6801.59	2045.59	3343.80	95.00	1.62	-0.58	1.52
	9558.00	90.40	179.40	239.2	-3347.60	1043.95	6801.57	2045.57	3437.54	94.00	2.46	0.82	2.32
	9653.00	89.57	179.69	241.9	-3442.59	1044.70	6801.59	2045.59	3532.10	95.00	0.93	-0.87	0.31
	9748.00	89.41	179.60	241.9	-3537.59	1045.29	6802.44	2046.44	3626.65	95.00	0.19	-0.17	-0.09
	9842.00	89.57	178.43	241.9	-3631.57	1046.91	6803.28	2047.28	3720.29	94.00	1.26	0.17	-1.24
	9937.00	90.18	178.90	244.6	-3726.54	1049.12	6803.48	2047.48	3814.99	95.00	0.81	0.64	0.49
	10031.00	89.38	178.42	244.6	-3820.51	1051.32	6803.84	2047.84	3908.68	94.00	0.99	-0.85	-0.51
	10126.00	89.26	178.62	247.3	-3915.47	1053.77	6804.97	2048.97	4003.39	95.00	0.25	-0.13	0.21
	10220.00	89.51	178.88	247.3	-4009.45	1055.82	6805.98	2049.98	4097.07	94.00	0.38	0.27	0.28
	10315.00	90.22	179.18	250.0	-4104.43	1057.43	6806.20	2050.20	4191.71	95.00	0.81	0.75	0.32
	10410.00	90.49	178.61	250.0	-4199.41	1059.26	6805.62	2049.62	4286.38	95.00	0.66	0.28	-0.60
	10504.00	90.52	179.43	250.0	-4293.39	1060.87	6804.79	2048.79	4380.02	94.00	0.87	0.03	0.87
	10599.00	89.66	179.61	250.0	-4388.39	1061.67	6804.64	2048.64	4474.59	95.00	0.92	-0.91	0.19
	10694.00	89.51	178.64	252.7	-4483.37	1063.12	6805.33	2049.33	4569.22	95.00	1.03	-0.16	-1.02
	10788.00	90.03	179.18	250.0	-4577.36	1064.91	6805.70	2049.70	4662.88	94.00	0.80	0.55	0.57
	10883.00	89.60	178.73	250.0	-4672.34	1066.64	6806.01	2050.01	4757.53	95.00	0.66	-0.45	-0.47
	10977.00	89.94	178.65	252.7	-4766.31	1068.79	6806.39	2050.39	4851.23	94.00	0.37	0.36	-0.09
	11072.00	90.09	179.01	252.7	-4861.29	1070.73	6806.36	2050.36	4945.90	95.00	0.41	0.16	0.38
	11166.00	89.69	179.05	255.4	-4955.28	1072.32	6806.54	2050.54	5039.55	94.00	0.43	-0.43	0.04
	11261.00	89.97	179.03	255.4	-5050.27	1073.91	6806.82	2050.82	5134.19	95.00	0.30	0.29	-0.02
	11356.00	89.88	178.30	255.4	-5145.24	1076.12	6806.95	2050.95	5228.88	95.00	0.77	-0.09	-0.77
	11450.00	89.54	177.52	255.4	-5239.17	1079.55	6807.42	2051.42	5322.67	94.00	0.91	-0.36	-0.83
	11544.00	89.35	176.66	255.4	-5333.05	1084.32	6808.34	2052.34	5416.54	94.00	0.94	-0.20	-0.91
	11639.00	89.91	178.43	255.4	-5427.95	1088.39	6808.95	2052.95	5511.35	95.00	1.95	0.59	1.86
	11734.00	89.72	181.29	255.4	-5522.94	1088.62	6809.26	2053.26	5605.86	95.00	3.02	-0.20	3.01
	11828.00	90.80	180.29	258.1	-5616.93	1087.33	6808.83	2052.83	5699.21	94.00	1.57	1.15	-1.06
	11923.00	90.37	180.69	258.1	-5711.92	1086.52	6807.86	2051.86	5793.61	95.00	0.62	-0.45	0.42
	12018.00	89.23	177.23	258.1	-5806.83	1086.23	6807.55	2051.55	5888.12	95.00	1.62	0.23	1.62

	12018.00	90.00	178.93	258.1	-5806.92	1086.83	6807.55	2051.55	5888.13	95.00	1.89	-0.39	-1.85
	12112.00	90.65	179.64	244.6	-5900.91	1088.00	6807.02	2051.02	5981.74	94.00	1.02	0.69	0.76
	12206.00	90.55	179.62	250.0	-5994.90	1088.61	6806.03	2050.03	6075.29	94.00	0.11	-0.11	-0.02
	12301.00	90.49	179.12	247.3	-6089.89	1089.65	6805.17	2049.17	6169.88	95.00	0.53	-0.06	-0.53
	12490.00	90.15	180.92	250.0	-6278.88	1089.59	6804.12	2048.12	6357.85	189.00	0.97	-0.18	0.95
	12585.00	90.12	181.20	252.7	-6373.86	1087.83	6803.89	2047.89	6452.14	95.00	0.30	-0.03	0.29
	12680.00	90.28	181.19	252.7	-6468.84	1085.85	6803.56	2047.56	6546.41	95.00	0.17	0.17	-0.01
	12774.00	90.22	181.15	252.7	-6562.82	1083.93	6803.15	2047.15	6639.69	94.00	0.08	-0.06	-0.04
	12868.00	90.65	180.06	255.4	-6656.81	1082.94	6802.44	2046.44	6733.07	94.00	1.25	0.46	-1.16
	12963.00	90.55	180.09	252.7	-6751.81	1082.81	6801.44	2045.44	6827.55	95.00	0.11	-0.11	0.03
	13058.00	90.65	180.50	252.7	-6846.80	1082.32	6800.45	2044.45	6921.98	95.00	0.44	0.11	0.43
	13153.00	89.75	180.72	255.4	-6941.79	1081.31	6800.12	2044.12	7016.36	95.00	0.98	-0.95	0.23
	13247.00	89.78	180.53	258.1	-7035.79	1080.29	6800.50	2044.50	7109.75	94.00	0.20	0.03	-0.20
	13436.00	89.85	179.83	260.8	-7224.78	1079.69	6801.11	2045.11	7297.67	189.00	0.37	0.04	-0.37
	13531.00	89.78	179.95	260.8	-7319.78	1079.88	6801.42	2045.42	7392.18	95.00	0.15	-0.07	0.13
	13626.00	89.91	179.60	263.5	-7414.78	1080.25	6801.68	2045.68	7486.71	95.00	0.39	0.14	-0.37
	13720.00	89.88	179.70	263.5	-7508.78	1080.82	6801.85	2045.85	7580.26	94.00	0.11	-0.03	0.11
	13815.00	90.40	179.44	79.7	-7603.78	1081.54	6801.62	2045.62	7674.82	95.00	0.61	0.55	-0.27
	13909.00	90.15	179.33	260.8	-7697.77	1082.55	6801.16	2045.16	7768.42	94.00	0.29	-0.27	-0.12
	14004.00	89.41	180.13	263.5	-7792.77	1082.99	6801.53	2045.53	7862.95	95.00	1.15	-0.78	0.84
	14098.00	90.03	181.27	263.5	-7886.76	1081.85	6801.99	2045.99	7956.32	94.00	1.38	0.66	1.21
	14193.00	89.41	181.14	263.5	-7981.73	1079.85	6802.45	2046.45	8050.58	95.00	0.67	-0.65	-0.14
	14287.00	89.85	180.61	266.2	-8075.72	1078.41	6803.06	2047.06	8143.92	94.00	0.73	0.47	-0.56
	14382.00	90.22	179.53	266.2	-8170.72	1078.30	6803.00	2047.00	8238.40	95.00	1.20	0.39	-1.14
	14477.00	89.60	180.71	266.2	-8265.72	1078.10	6803.15	2047.15	8332.87	95.00	1.40	-0.65	1.24
	14571.00	89.69	180.48	269.0	-8359.71	1077.12	6803.73	2047.73	8426.26	94.00	0.26	0.10	-0.24
	14666.00	89.88	179.73	269.0	-8454.71	1076.95	6804.09	2048.09	8520.73	95.00	0.81	0.20	-0.79
	14760.00	89.91	180.62	269.0	-8548.71	1076.66	6804.26	2048.26	8614.19	94.00	0.95	0.03	0.95
	14855.00	89.97	180.03	271.7	-8643.70	1076.12	6804.36	2048.36	8708.63	95.00	0.62	0.06	-0.62
	14950.00	89.69	180.48	271.7	-8738.70	1075.70	6804.64	2048.64	8803.07	95.00	0.56	-0.29	0.47
	15044.00	89.48	179.58	271.7	-8832.70	1075.65	6805.32	2049.32	8896.56	94.00	0.98	-0.22	-0.96
	15139.00	90.18	177.60	271.7	-8927.66	1077.99	6805.61	2049.61	8991.26	95.00	2.21	0.74	-2.08
	15233.00	89.78	178.23	271.7	-9021.60	1081.41	6805.64	2049.64	9085.05	94.00	0.79	-0.43	0.67
	15327.00	90.00	177.42	274.4	-9115.53	1084.97	6805.82	2049.82	9178.85	94.00	0.89	0.23	-0.86
	15422.00	89.41	176.03	274.4	-9210.37	1090.40	6806.31	2050.31	9273.74	95.00	1.59	-0.62	-1.46
	15517.00	90.49	177.31	274.4	-9305.21	1095.92	6806.39	2050.39	9368.64	95.00	1.76	1.14	1.35
	15611.00	90.22	178.14	274.4	-9399.13	1099.65	6805.81	2049.81	9462.45	94.00	0.93	-0.29	0.88
	15706.00	89.91	178.34	274.4	-9494.09	1102.57	6805.70	2049.70	9557.19	95.00	0.39	-0.33	0.21
	15800.00	90.15	178.63	274.4	-9588.05	1105.05	6805.65	2049.65	9650.91	94.00	0.40	0.26	0.31
	15894.00	89.48	177.39	274.4	-9682.00	1108.32	6805.96	2049.96	9744.69	94.00	1.50	-0.71	-1.32
	15989.00	89.78	177.67	277.1	-9776.90	1112.41	6806.57	2050.57	9839.51	95.00	0.43	0.32	0.29
	16084.00	89.29	177.86	274.4	-9871.83	1116.12	6807.34	2051.34	9934.31	95.00	0.55	-0.52	0.20
	16178.00	89.94	178.17	277.1	-9965.77	1119.37	6807.97	2051.97	10028.09	94.00	0.77	0.69	0.33
	16273.00	90.59	178.03	274.4	-10060.72	1122.52	6807.53	2051.53	10122.85	95.00	0.70	0.68	-0.15
	16367.00	90.43	178.04	274.4	-10154.66	1125.74	6806.70	2050.70	10216.62	94.00	0.17	-0.17	0.01
	16462.00	90.28	178.18	274.4	-10249.60	1128.88	6806.11	2050.11	10311.38	95.00	0.22	-0.16	0.15
	16557.00	90.65	177.37	277.1	-10344.53	1132.57	6805.34	2049.34	10406.18	95.00	0.94	0.39	-0.85
	16651.00	90.59	177.79	277.1	-10438.44	1136.53	6804.32	2048.32	10500.00	94.00	0.45	-0.06	0.45
	16746.00	90.34	178.35	277.1	-10533.38	1139.73	6803.55	2047.55	10594.76	95.00	0.65	-0.26	0.59
	16840.00	90.22	177.60	277.1	-10627.32	1143.06	6803.09	2047.09	10688.54	94.00	0.81	-0.13	-0.80
	16890.00	90.46	178.14	277.1	-10677.28	1144.91	6802.79	2046.79	10738.43	50.00	1.18	0.48	1.08
Projection	16915.00	90.46	178.14	277.1	-10702.27	1145.72	6802.59	2046.59	10763.37	25.00	0.00	-0.01	-0.00