



Gamma Ray

LWD MEMORY LOG

Scale:	Company: Noble Energy	
1:240	Well: Rampart A33-740	
True Vertical Depth	Field: Wattenberg	
Depth Reference:	County:	Country: United States
Driller's Depth	State: Colorado	
Status:	Surface Location:	
Final Print	Latitude:	40° 27' 57.760" N
	Longitude:	104° 33' 39.294" W
API No: 05-123-50925-00	Directional	
Job ID: 110958222	SEC: 21	TWN: 6N RGE: 64W
Permanent Datum (P.D.):	Mean Sea Level	Elevation: 0.00 ft
Log Measured From:	Rig Floor	Above P.D.: 4757.00 ft
Elev. KB: 4757.00 ft		Elev. DF: 4727.00 ft
Elev. GL:		
Magnetic Field Reference		
Interval		
From: 2021-08-14	Drilled (ft)	Logged (ft)
To: 2021-08-18	Top: 1952.00	Top: 1952.00
Spud: 2021-07-28	Bottom: 17637.00	Bottom: 17623.00
Total Magnetic Field Strength: (nT)		51903
Mag to Reference North Correction: (deg)		7.00
Borehole Record		
Casing Record		
Hole Size (in)	From (ft)	To (ft)
13.500	30.00	1952.00
8.500	1952.00	17637.00
Mud Record		
Deviation Record		
Type	From (ft)	To (ft)
Oil Based Mud	1952.00	17637.00
Acquisition System		
Software Version		
Cadence	RT 6.1	Rig: H&P 517
Plot Studio	6.1.9289.2	Contractor: Helmerich & Payne Drilling Co
		District: RMA
		Unit: D&E

(C) 2021 Baker Hughes Company - All rights reserved. Baker Hughes and its affiliates provides this information on an "as is" basis for general information purposes and believes it to be accurate as of the date of publication. Baker Hughes does not make any representation as to the accuracy or completeness of the information and makes no warranties of any kind, specific, implied or oral, to the fullest extent permissible by law, including those of merchantability and fitness for a particular purpose or use. Baker Hughes hereby disclaims any and all liability for any direct, indirect, consequential or special damages, claims for lost profits, or third party claims arising from the use of the information, whether a claim is asserted in contract, tort, or otherwise. The Baker Hughes logo is a trademark of Baker Hughes Company.

Log Run Summary												
Run No	Bit Run No.	Bit Size  (in)	Bit Type	Bit Gauge Length (in)	Assembly Type	Logged Interval		Bit Depth Interval		Date / Time		Circ. Hours
						Top	Bottom	From	To	Start Logging	End Logging	
						(ft)	(ft)	(ft)	(ft)			
1	1	8.500	PDC	3.00	AutoTrak Curve	1952.00	17623.00	1952.00	17637.00	2021-08-14 20:41	2021-08-18 00:23	72.20

Crew									
Name		Arrive Wellsite	Depart Wellsite	Name		Arrive Wellsite	Depart Wellsite	Name	

Cody Fleming	2021-08-14	2021-08-18	David Newbold	2021-08-14	2021-08-18	Jeremiah Samson	2021-08-14	2021-08-19
Mike Grunsey	2021-08-14	2021-08-19	Tien Bui	2021-08-14	2021-08-19			

## Mud Properties Record

Date / Time	Run No.	Depth (ft)	Mud Type	Density (ppg)	Viscosity (cP)	pH	Fluid Loss (cm3)	Oil / Water	Source	Total Chlorides (ppm)	K+ (%)
2021-08-14 05:00	1	1952.00	Oil Based Mud	9.9	15	N/A	22.8	69/18	Active Pit	25000	0.00
2021-08-15 04:00	1	3988.00	Oil Based Mud	9.5	14	N/A	15.8	71/18	Active Pit	31500	0.00
2021-08-16 17:00	1	10149.00	Oil Based Mud	10.8	15	N/A	15.4	67/16	Active Pit	27000	0.00
2021-08-17 16:00	1	15014.00	Oil Based Mud	11.3	17	N/A	17.8	65/16	Active Pit	26500	0.00

## Equipment and Service Data

Run No.	Tool	Serial Number	Measurement	Sensor Offset (ft)	Bit Offset (ft)	Max O.D. (in)	Min I.D. (in)
1	AutoTrak Curve Steering Unit	14262244	Near Bit Inclination	5.93	6.76	7.000	4.330
1	AutoTrak Curve Steering Unit	14262244	Near Bit VSS	5.93	6.76	7.000	4.330
1	AutoTrak Curve MWD	14547175	Gamma (single)	2.81	12.93	7.000	3.250
1	AutoTrak Curve MWD	14547175	Directional (mag)	12.27	22.39	7.000	3.250

## Service and Tool Mnemonics

Mnemonic	Name	Description
ATC SU	AutoTrak Curve SU	Auto Trak Curve Steering Unit
ATC MWD	AutoTrak Curve MWD	Auto Trak Curve MWD
ATC LCPM	AutoTrak Curve LCPM	Auto Trak Curve LCPM

## Comments

- 1 Depth measurements were obtained from a depth control system not supplied or operated by Baker Hughes. Due to lack of control by Baker Hughes logging engineers, depth calibrations and measurements could not be independently verified.
- 2 Baker Hughes LWD Run 1 utilized 6 3/4 inch NaviGamma service (Gamma Ray and Directional) behind a 8 1/2 inch bit and rotary steerable assembly from 1952 to 17637 feet MD (1952 to 6793 feet TVD).
- 3 The Gamma Ray Apparent (GRAM) data is presented 0 to 300 API, per the customer's request.
- 4 Various intervals of missing data are a result of downlinking while drilling.

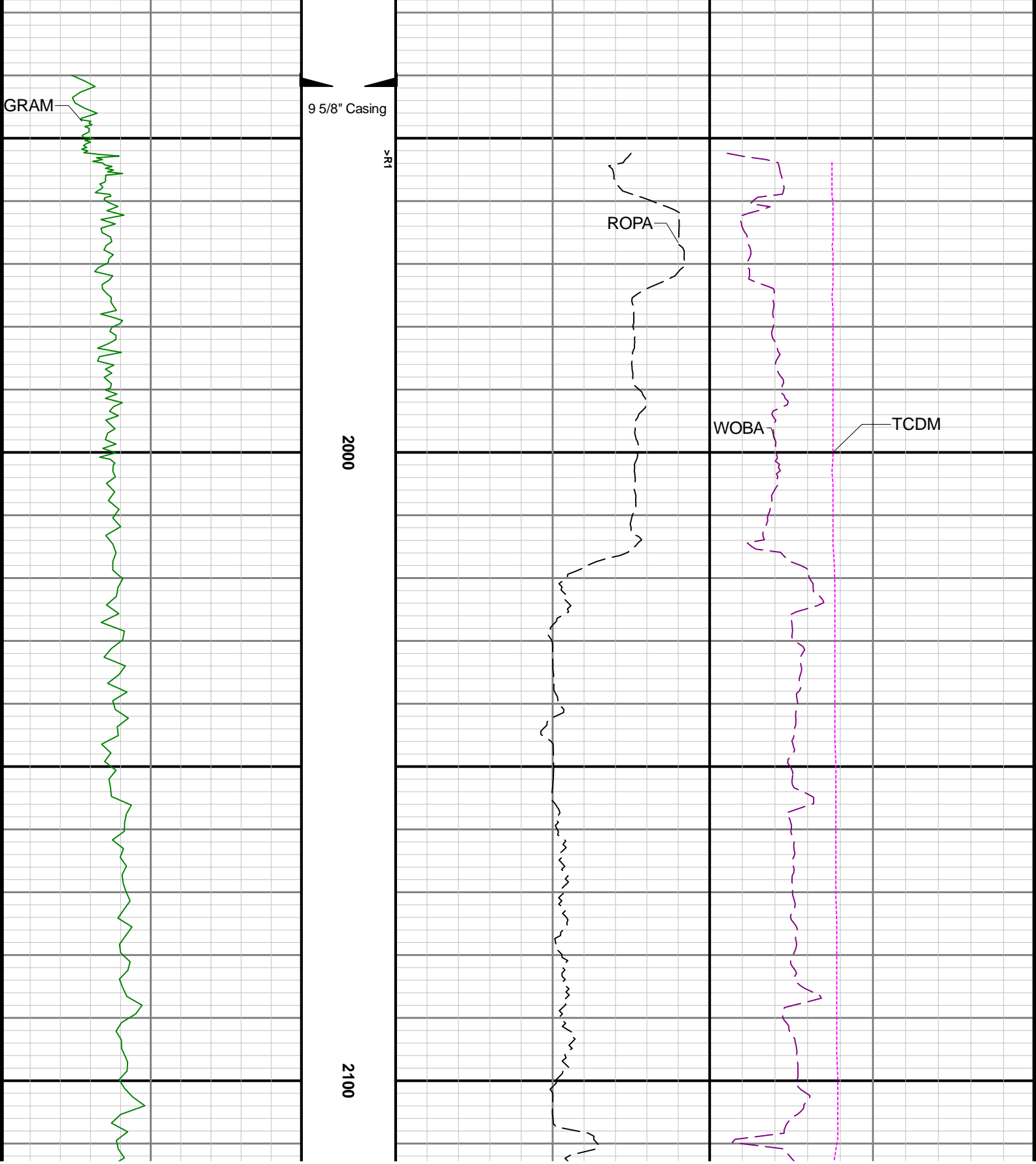
## Remarks

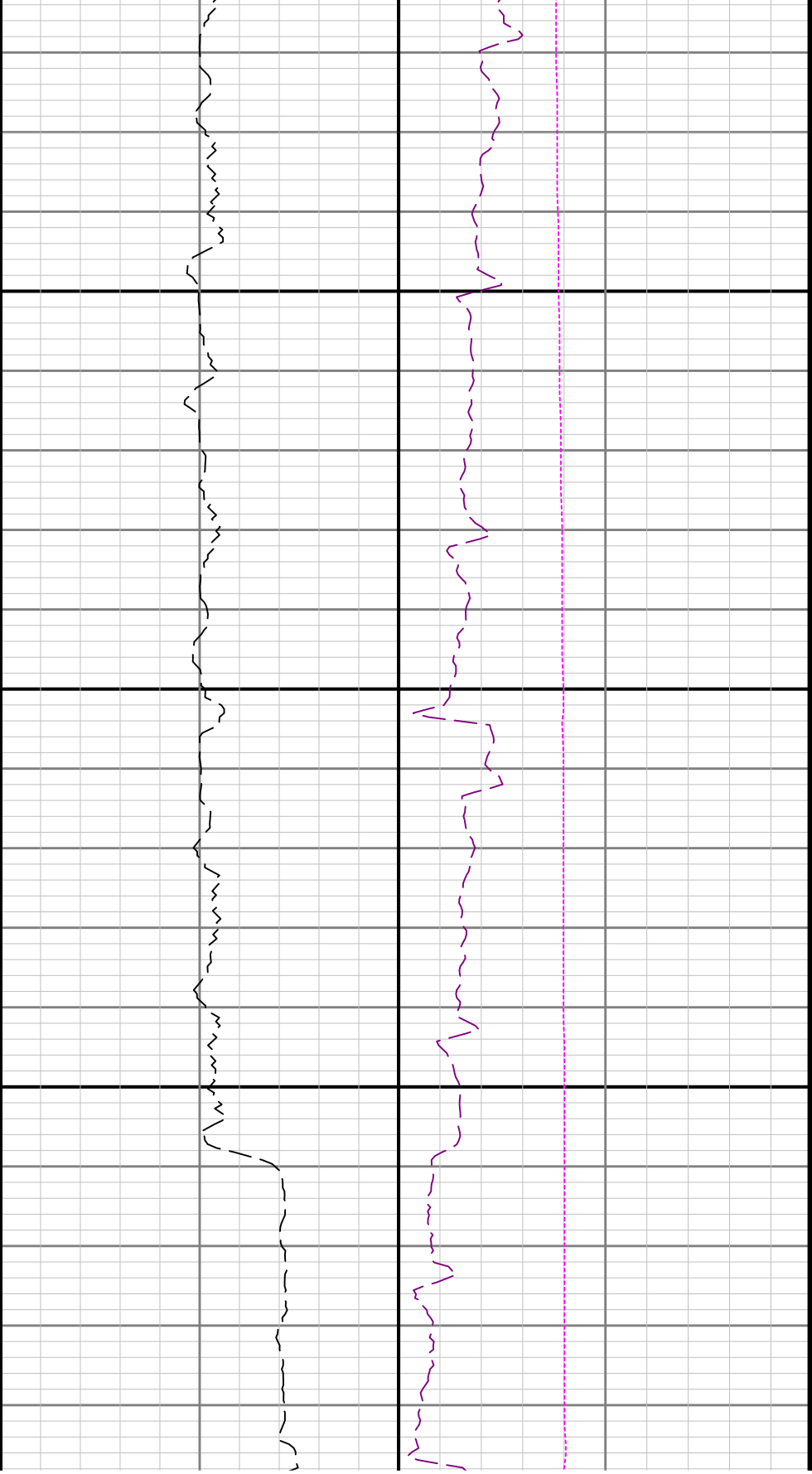
Number	Depth (ft)	Hole Section (in)	Run No.	Remark
--------	---------------	-------------------------	------------	--------

## Curve Mnemonics

Presented Curves	Description	Units
ROPA	Depth Averaged ROP 3 ft Average	ft/h
WOBA	Weight on Bit - Average 1 ft Average	klb
GRAM	Gamma Ray - Apparent - Memory 0.5 ft Average	API
TCDM	Directional Real-Time Survey Temperature	degF

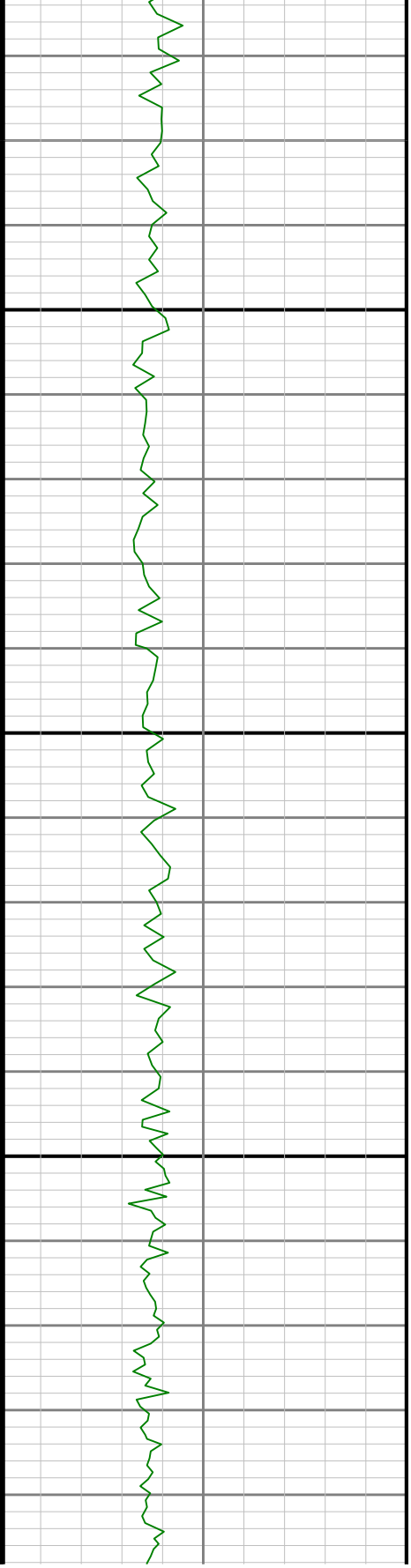
[illegible]

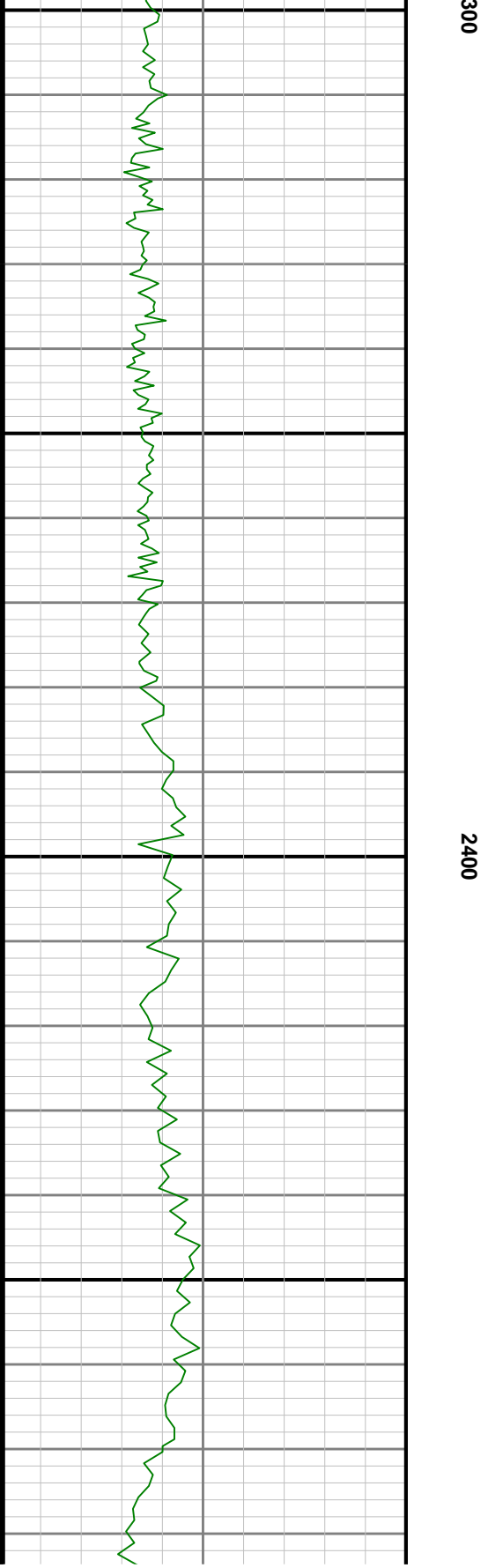


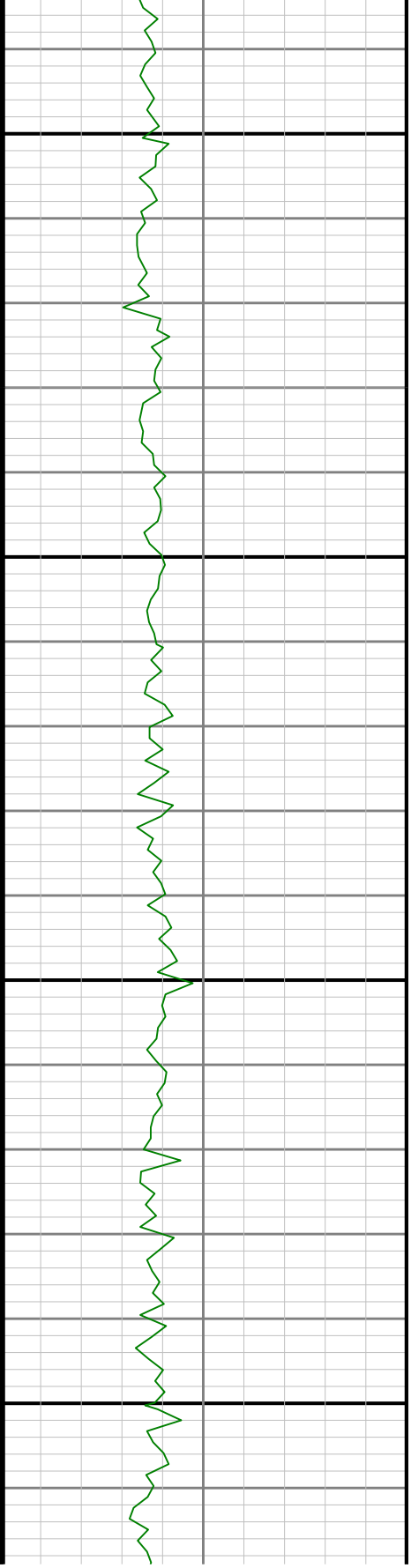
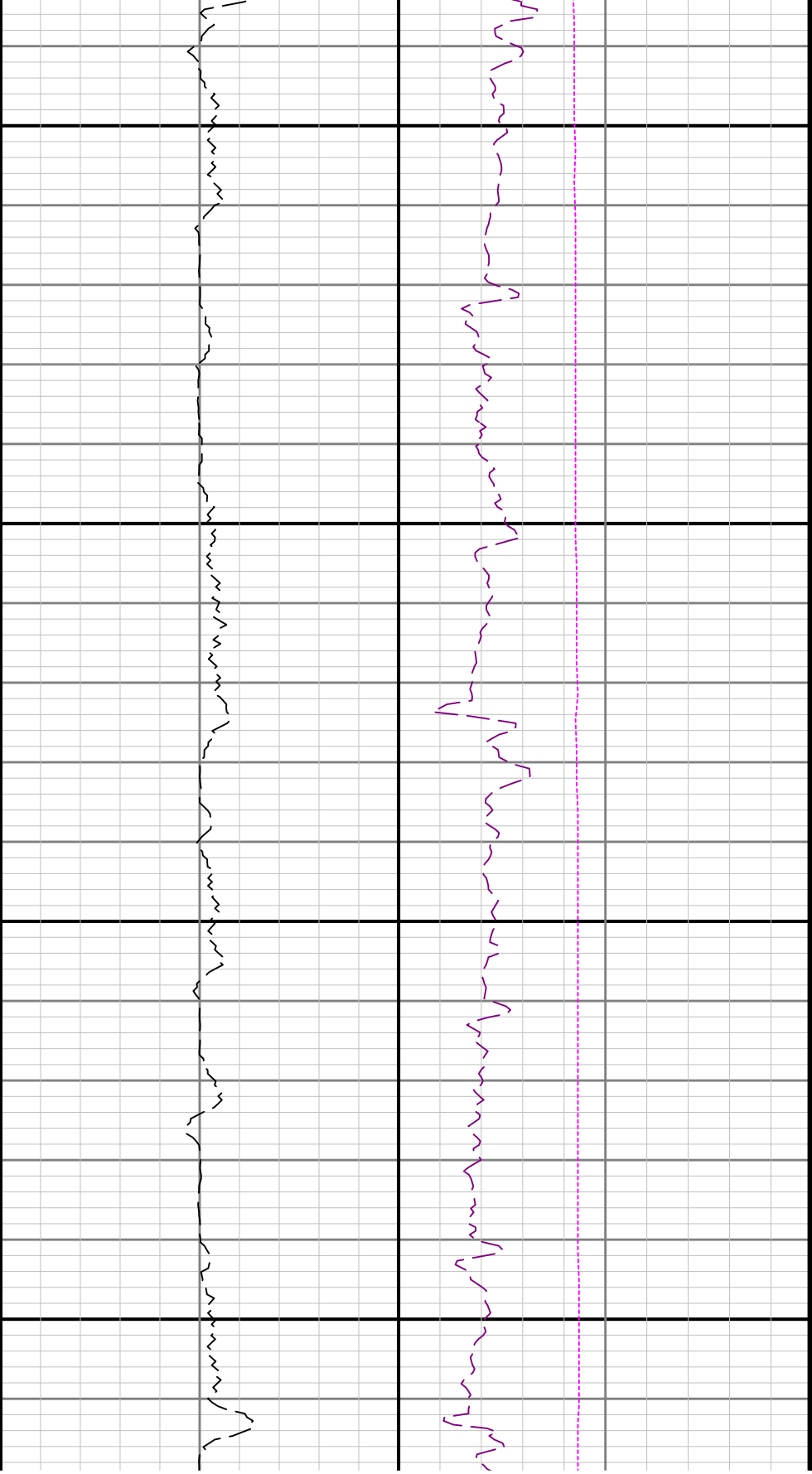


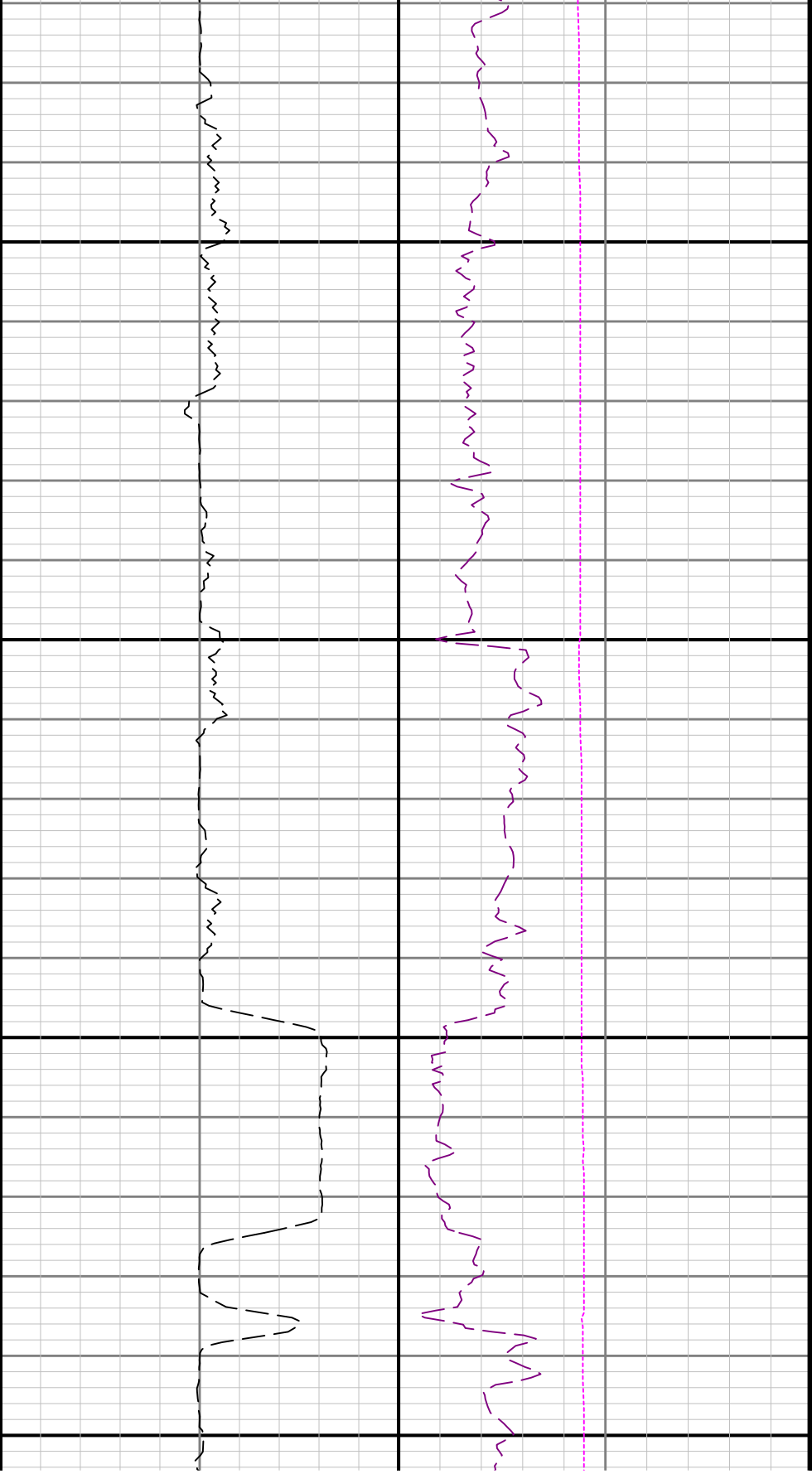
2200

2



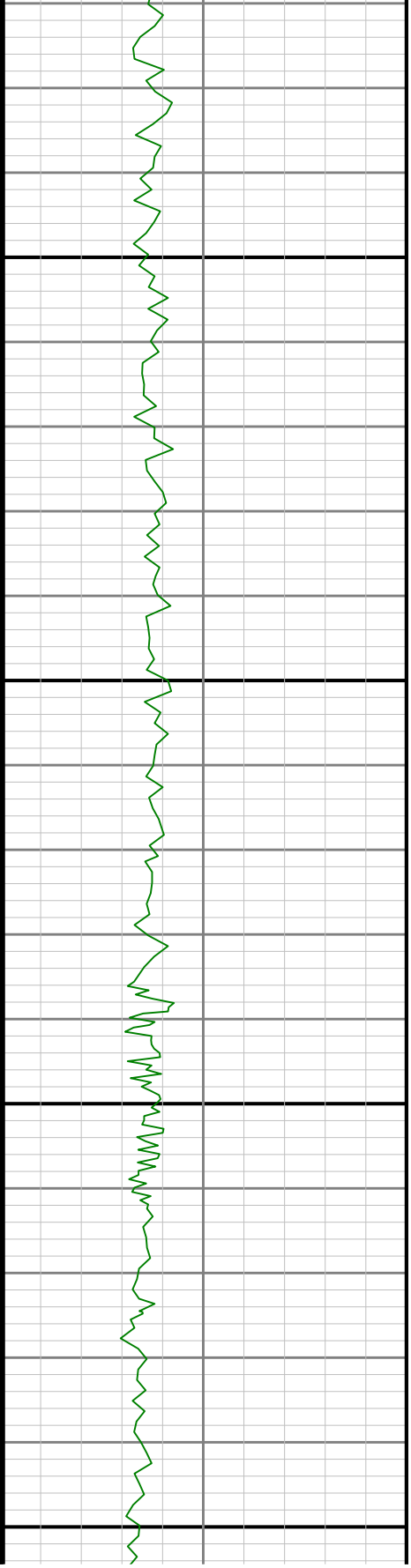


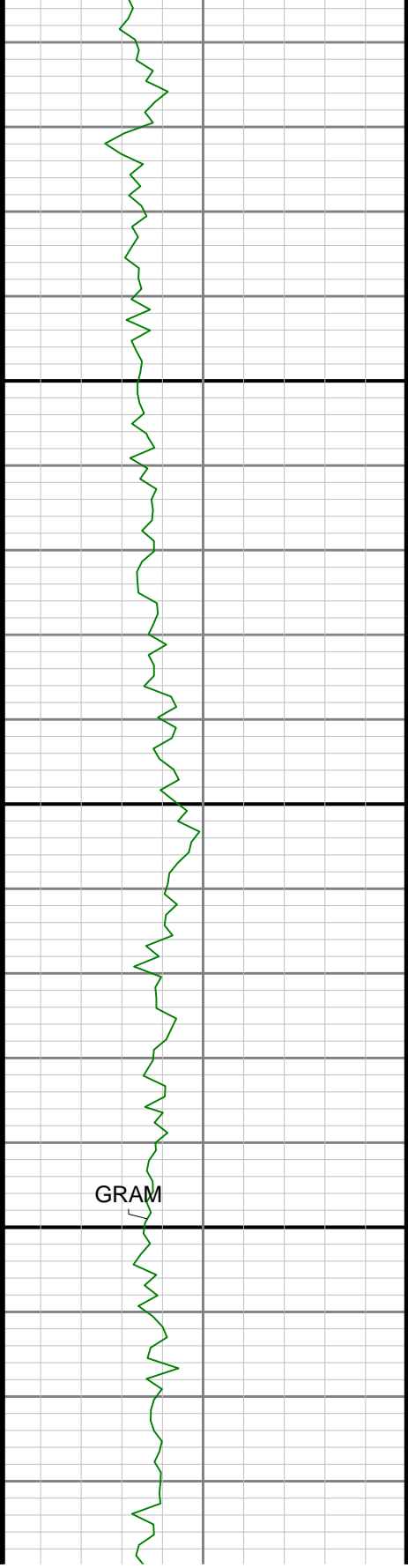




2700

2800

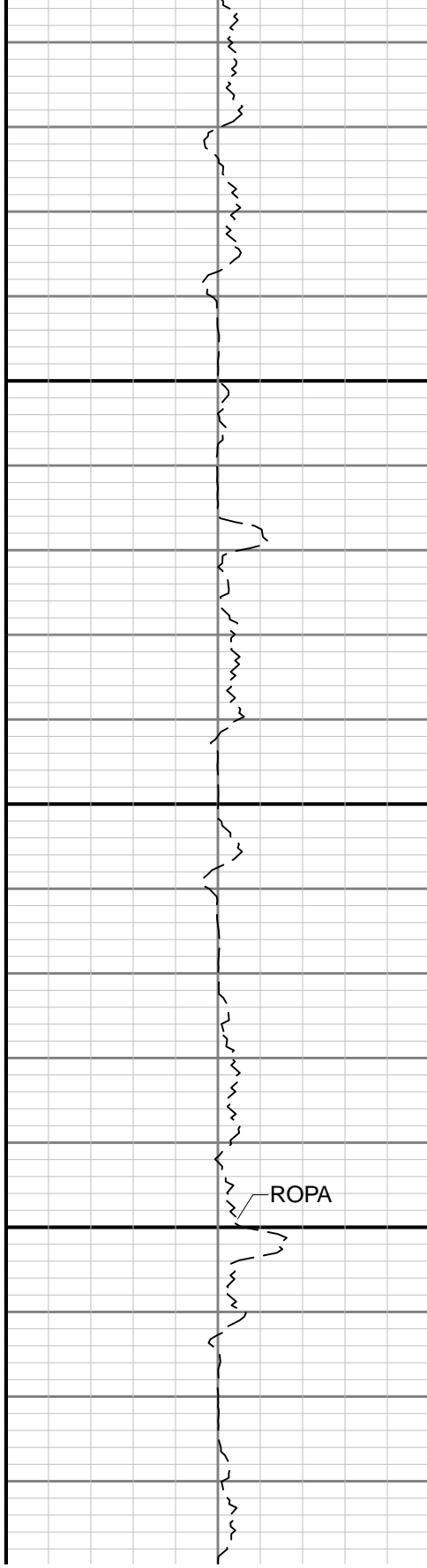




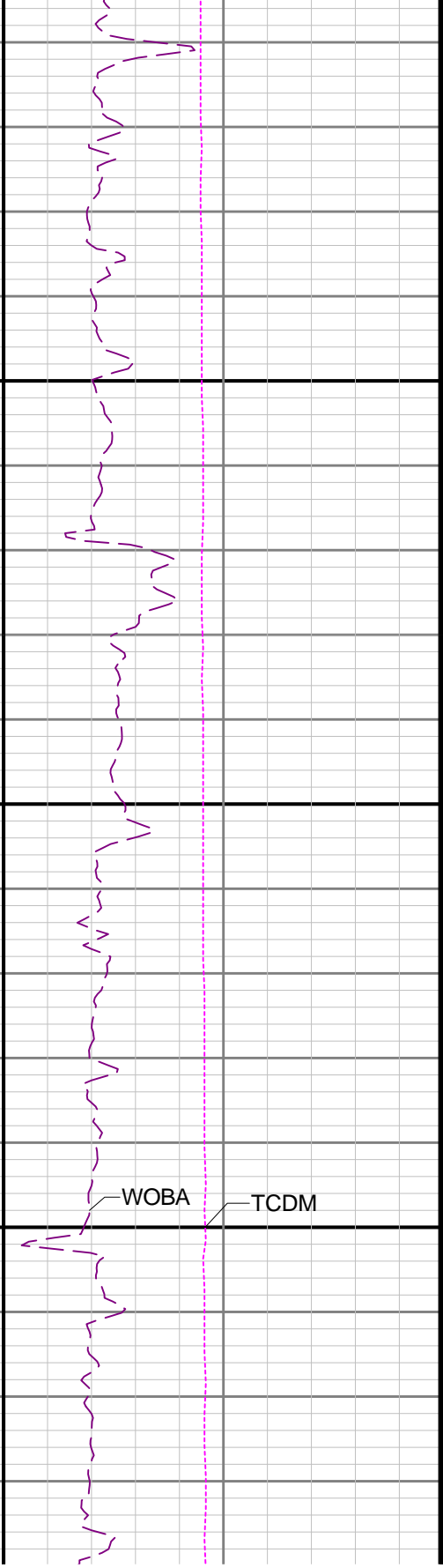
GRAM

2900

3000



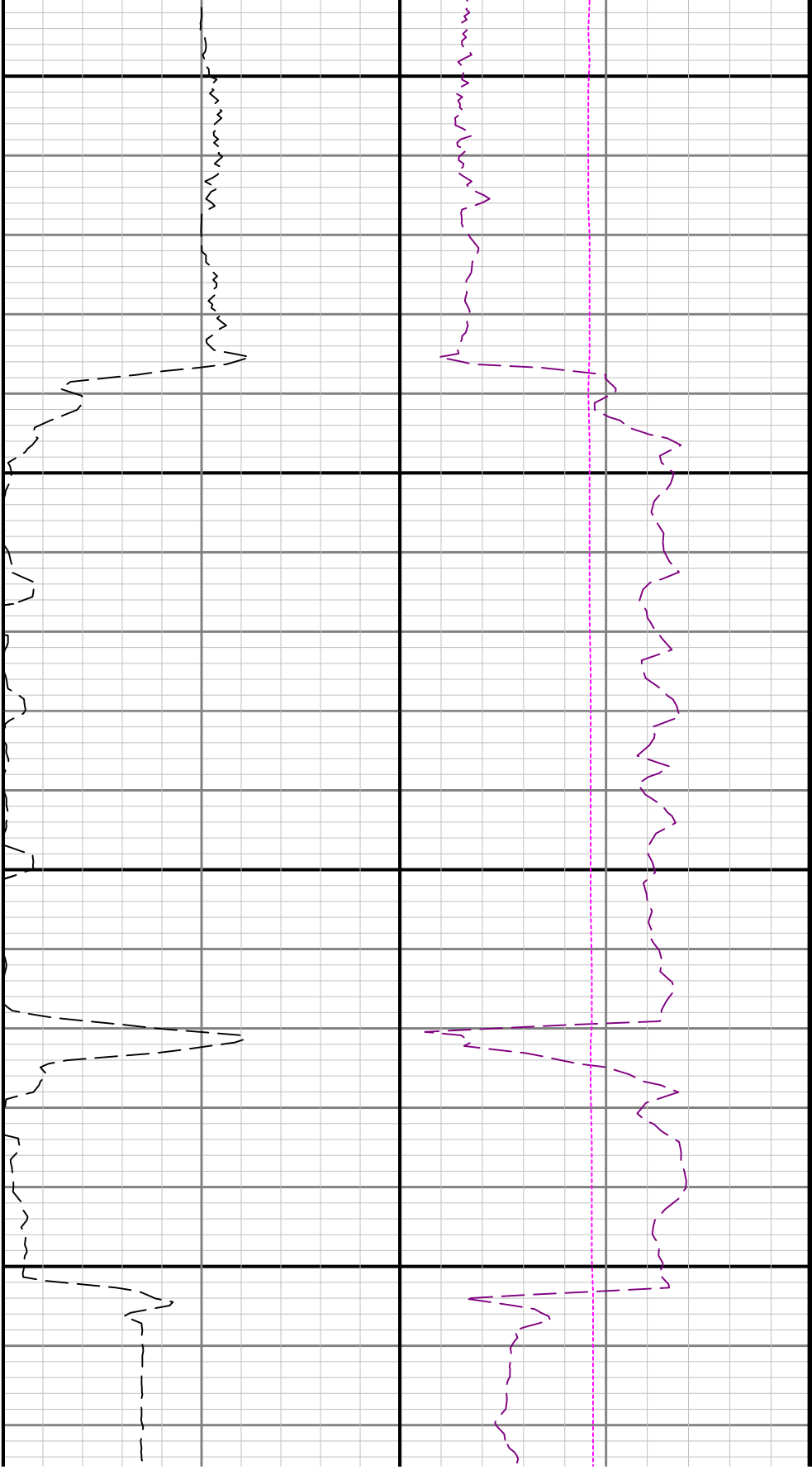
ROPA



WOBA

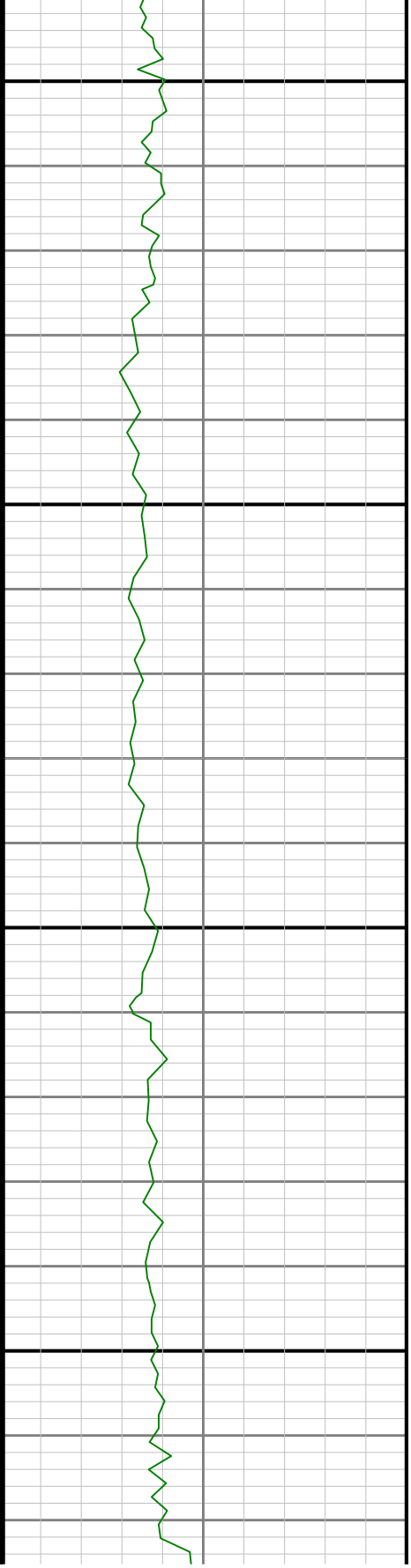
TCDM





3100

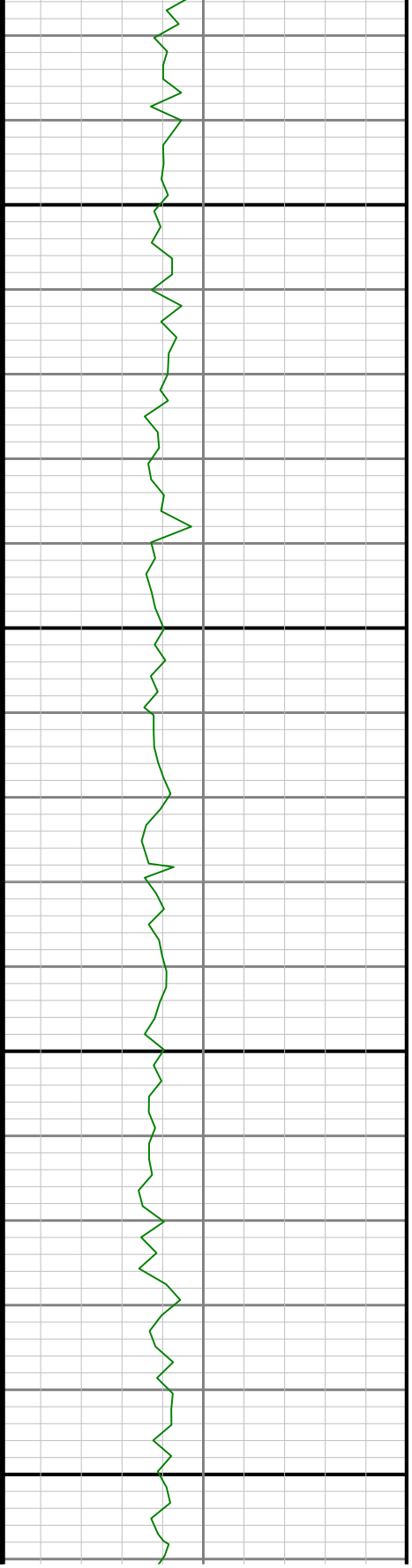
3200

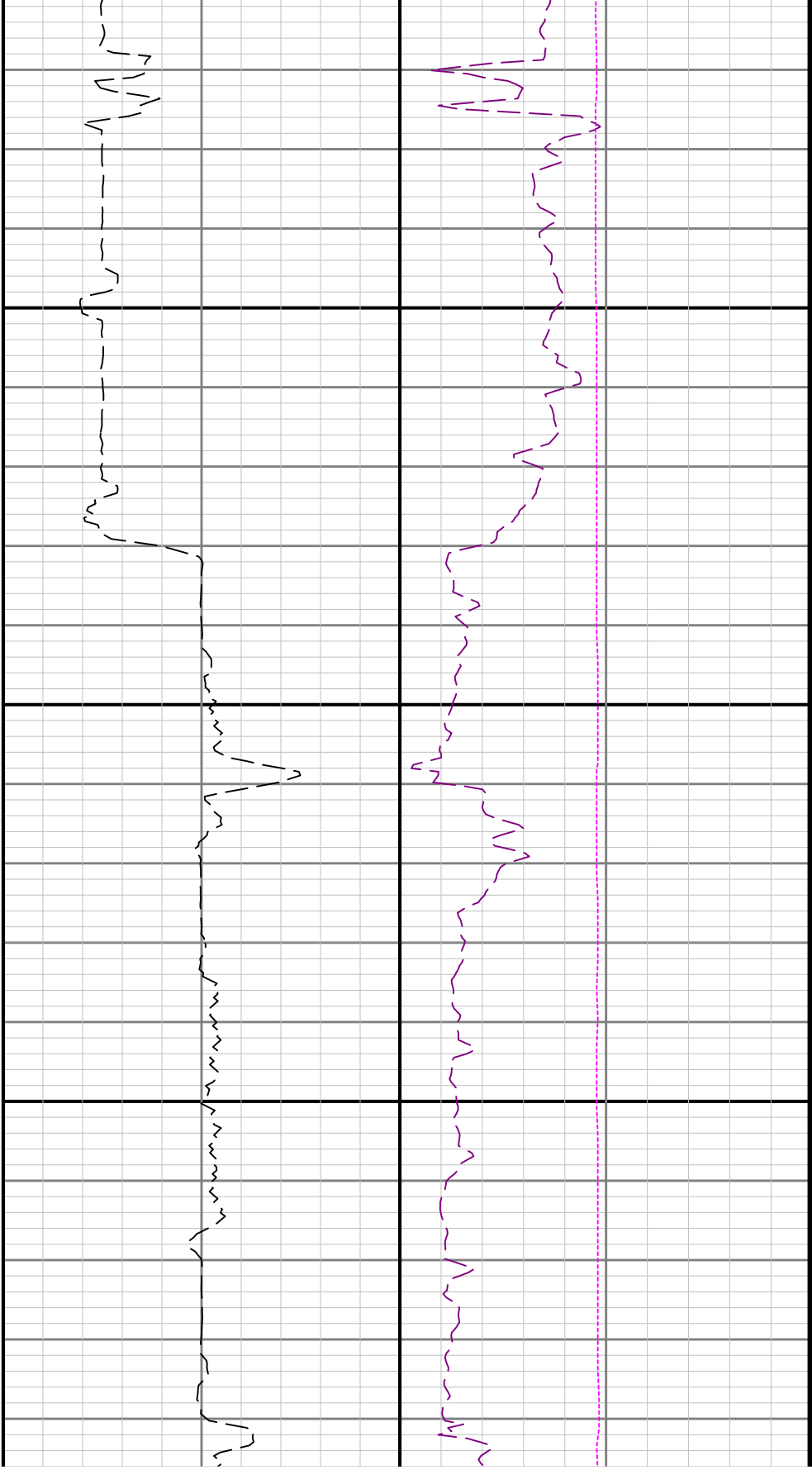




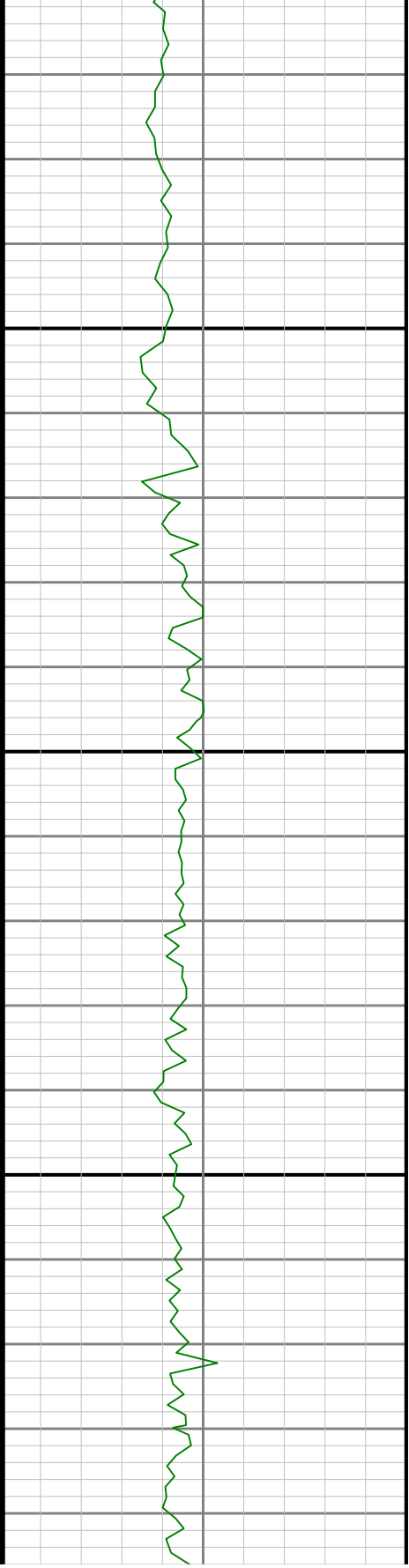
3300

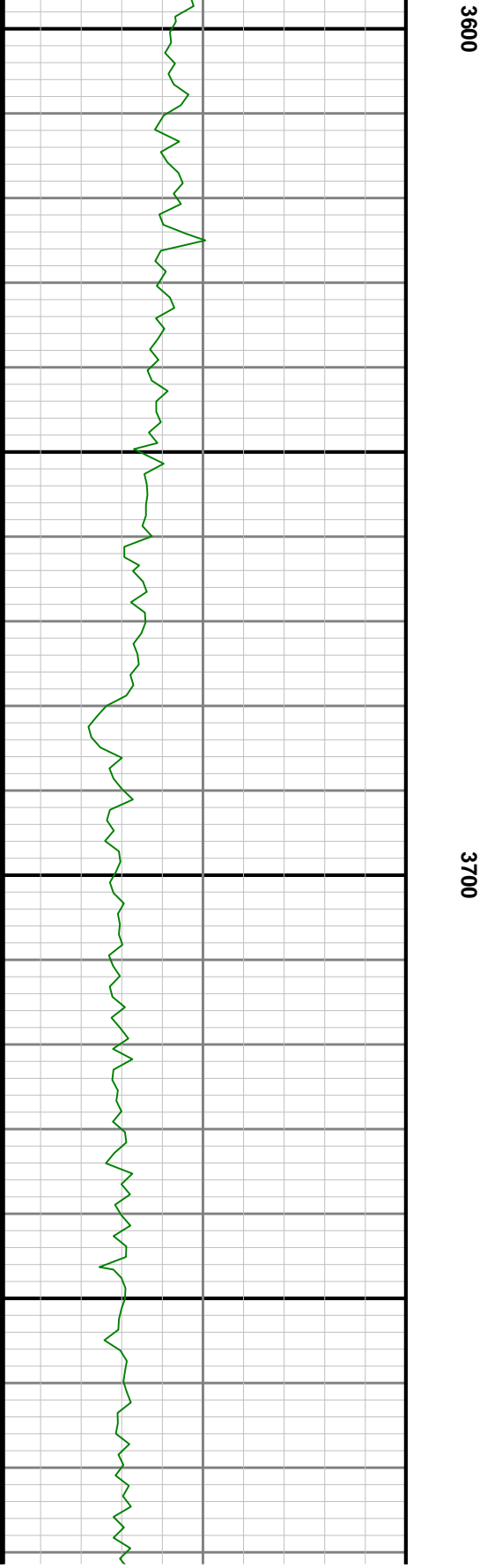
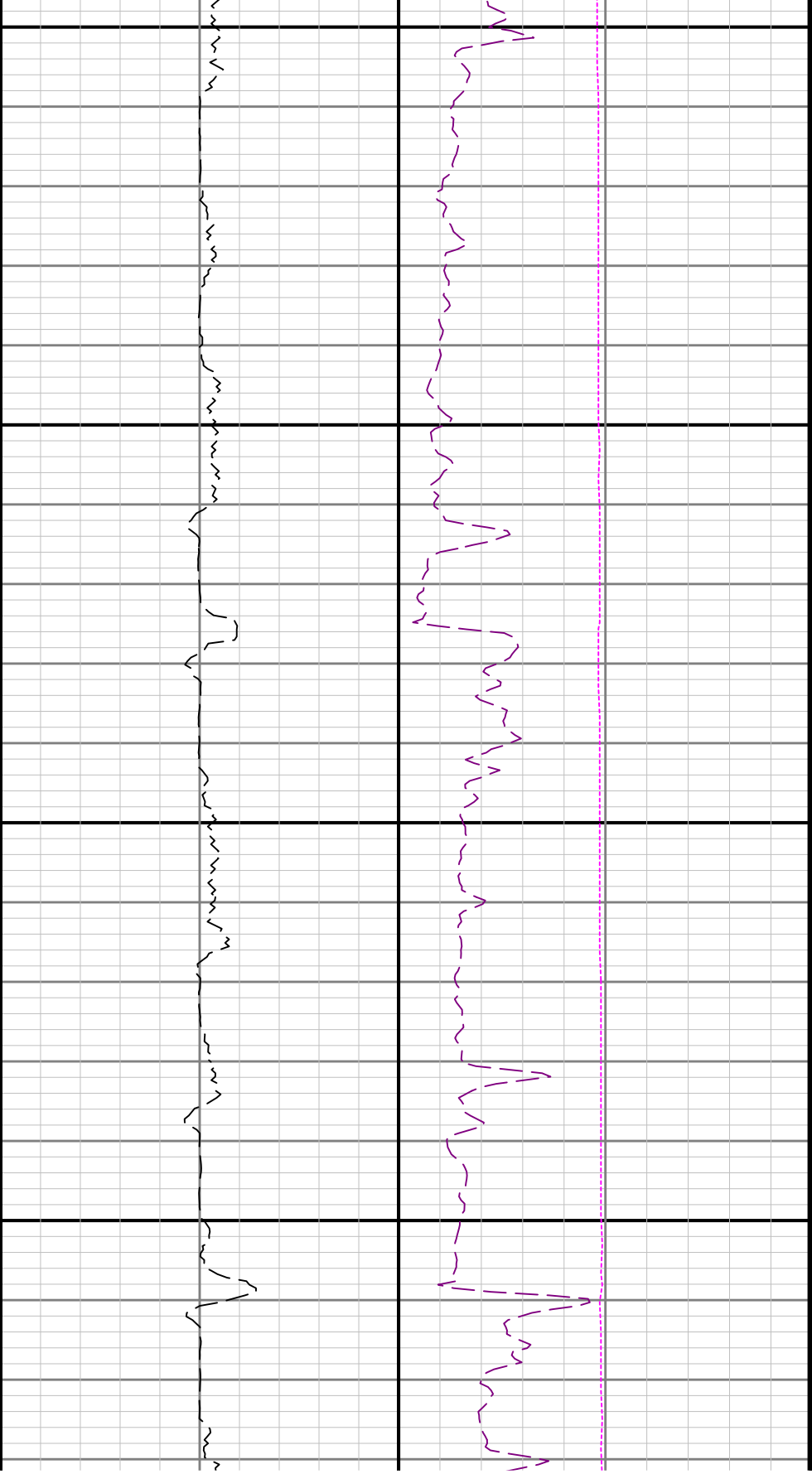
3400

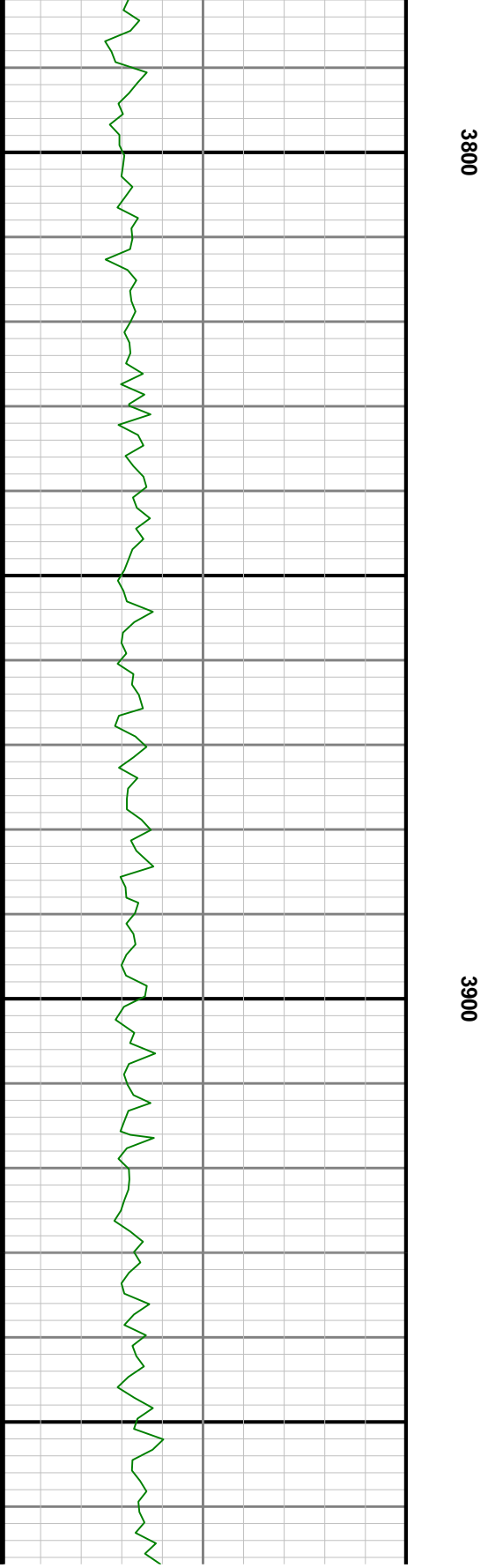
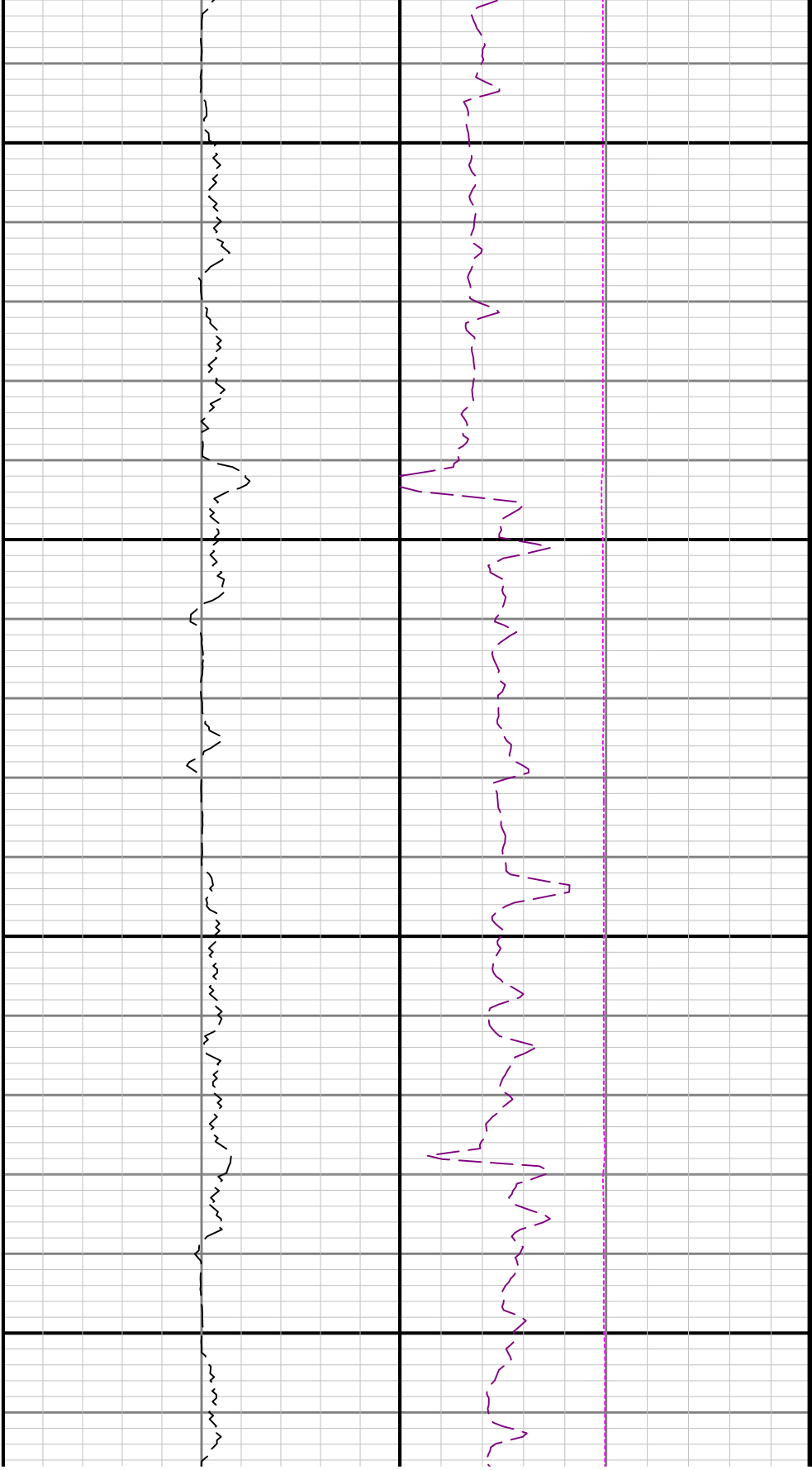


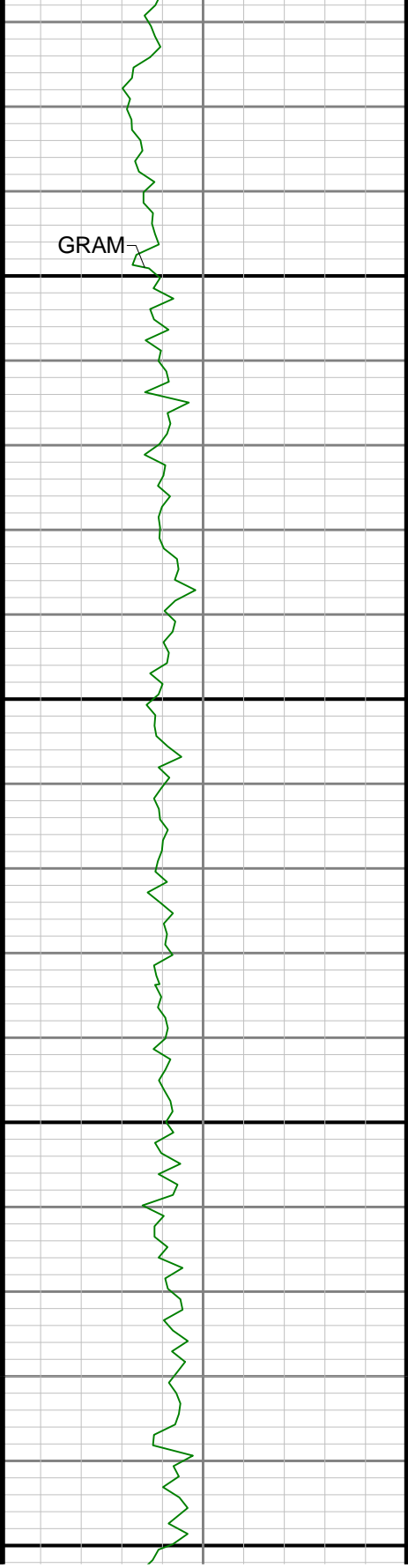


3500



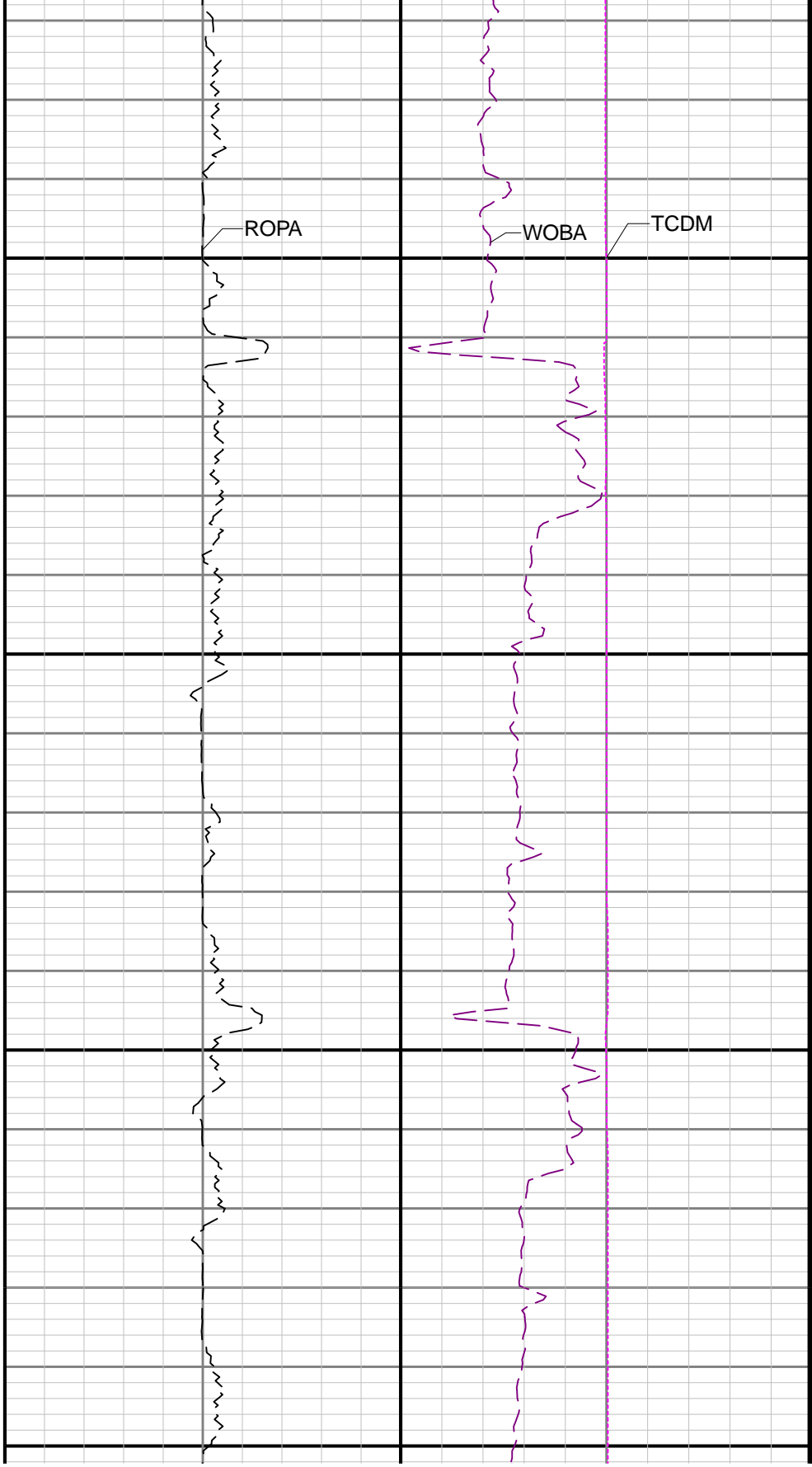


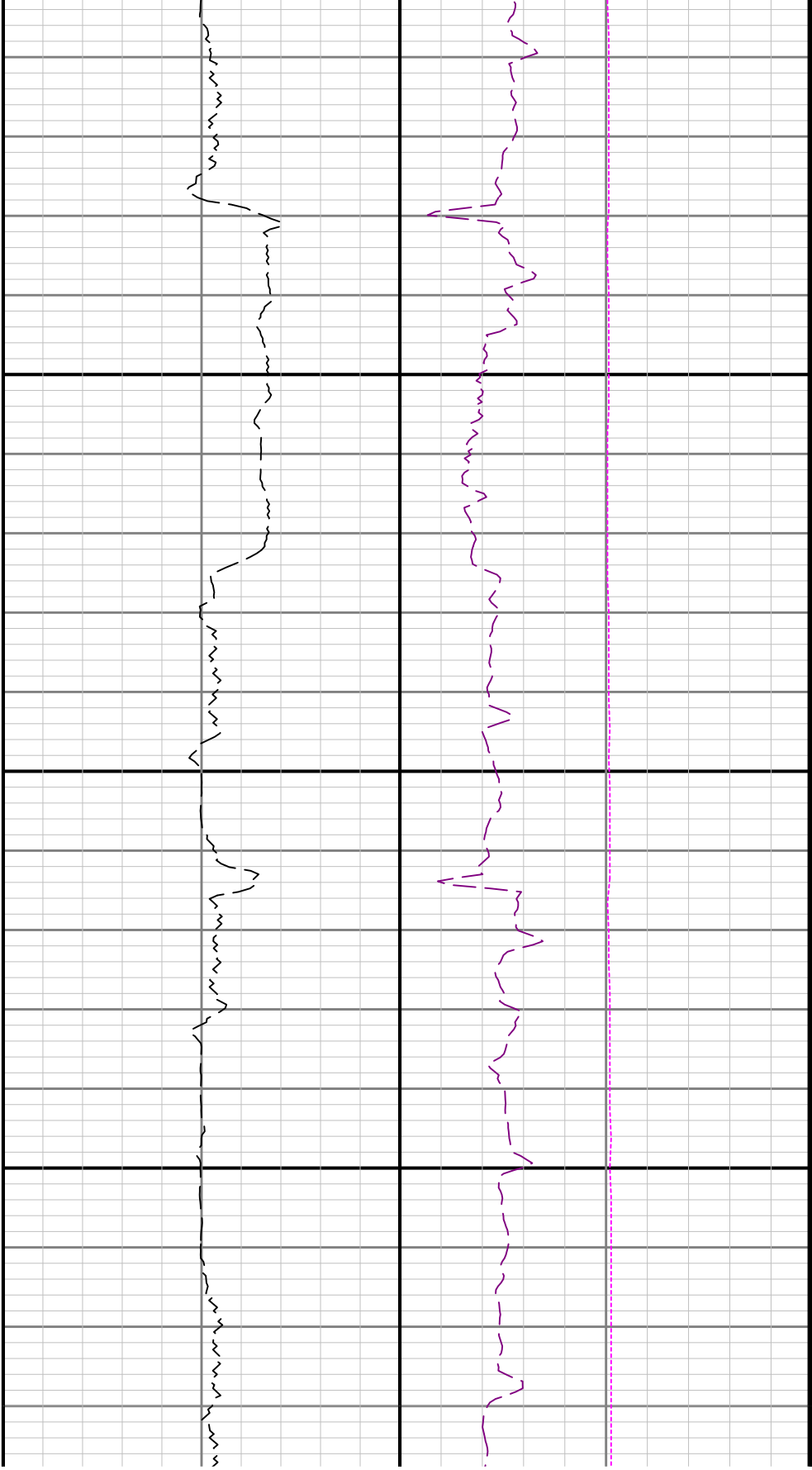




4000

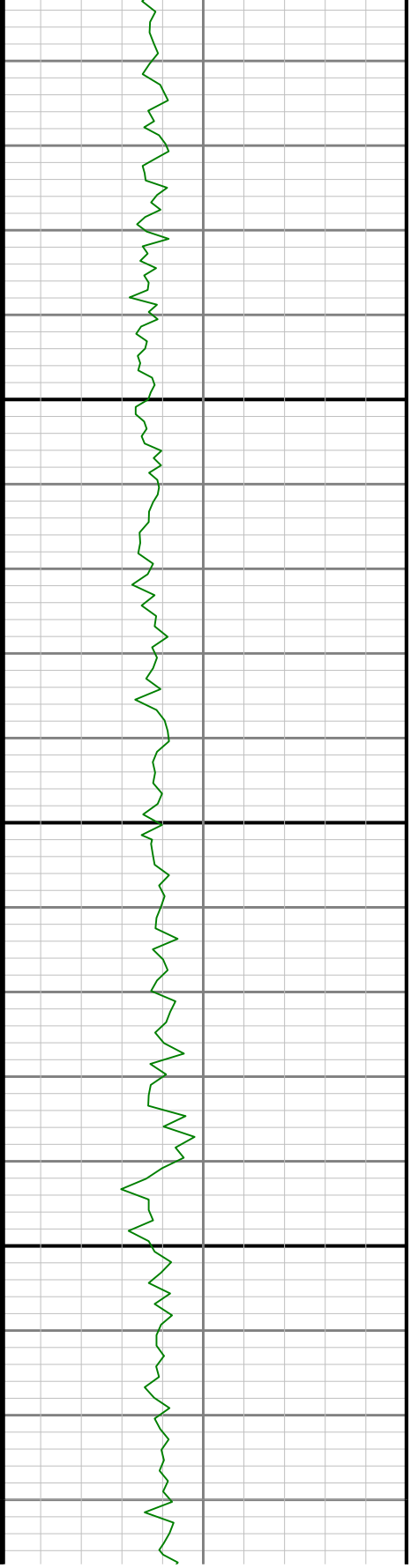
4100

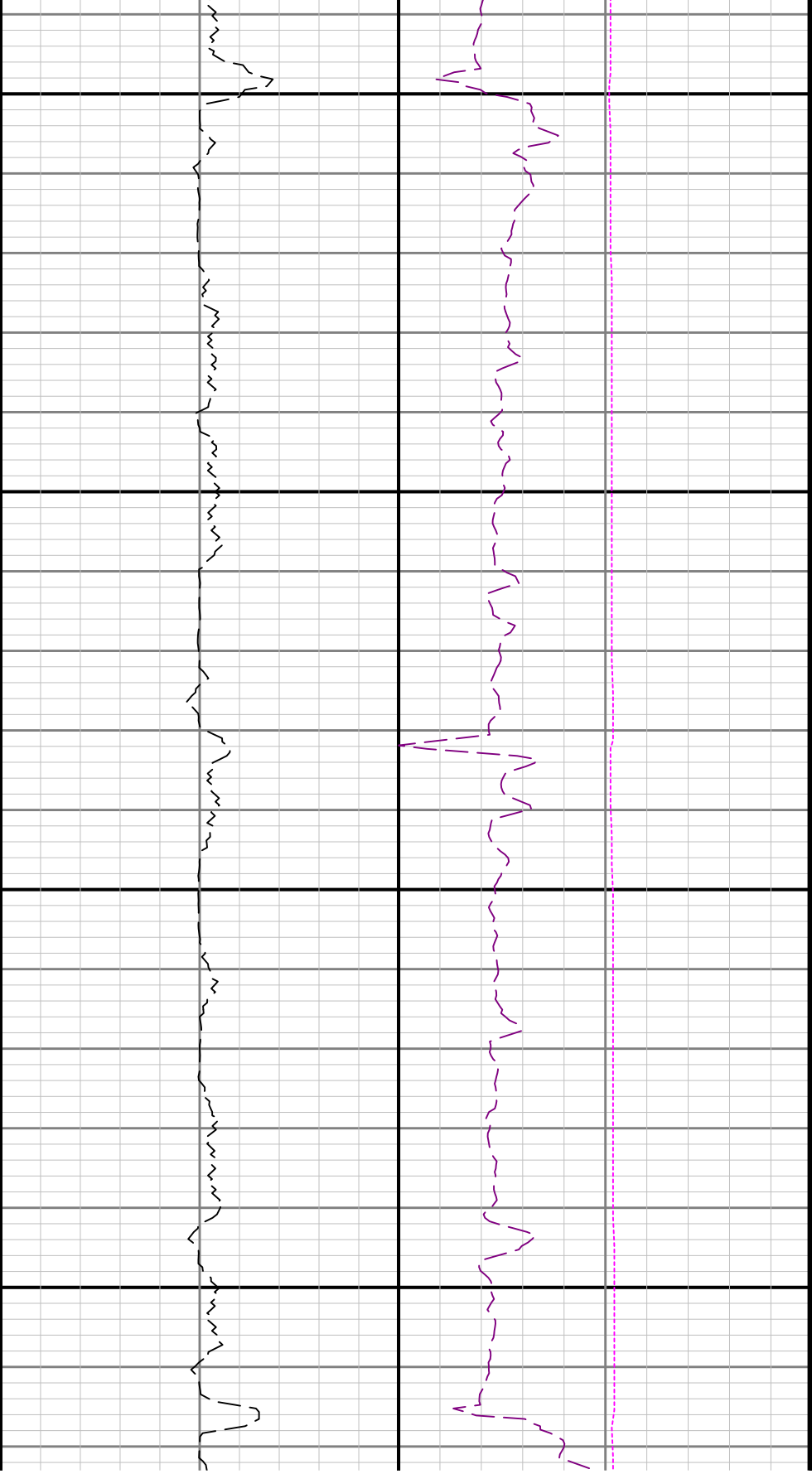




4200

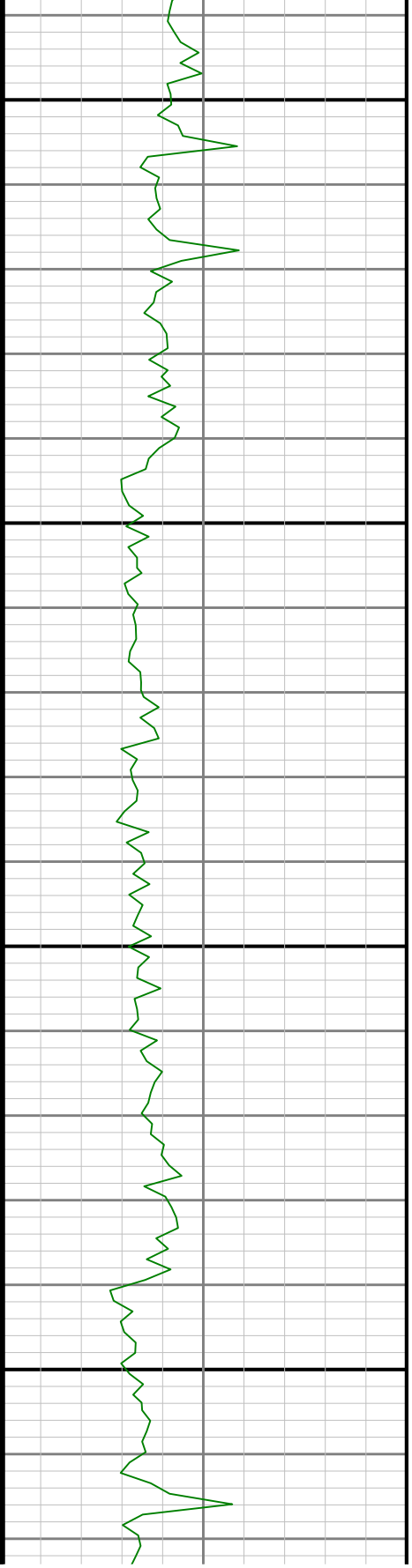
4300



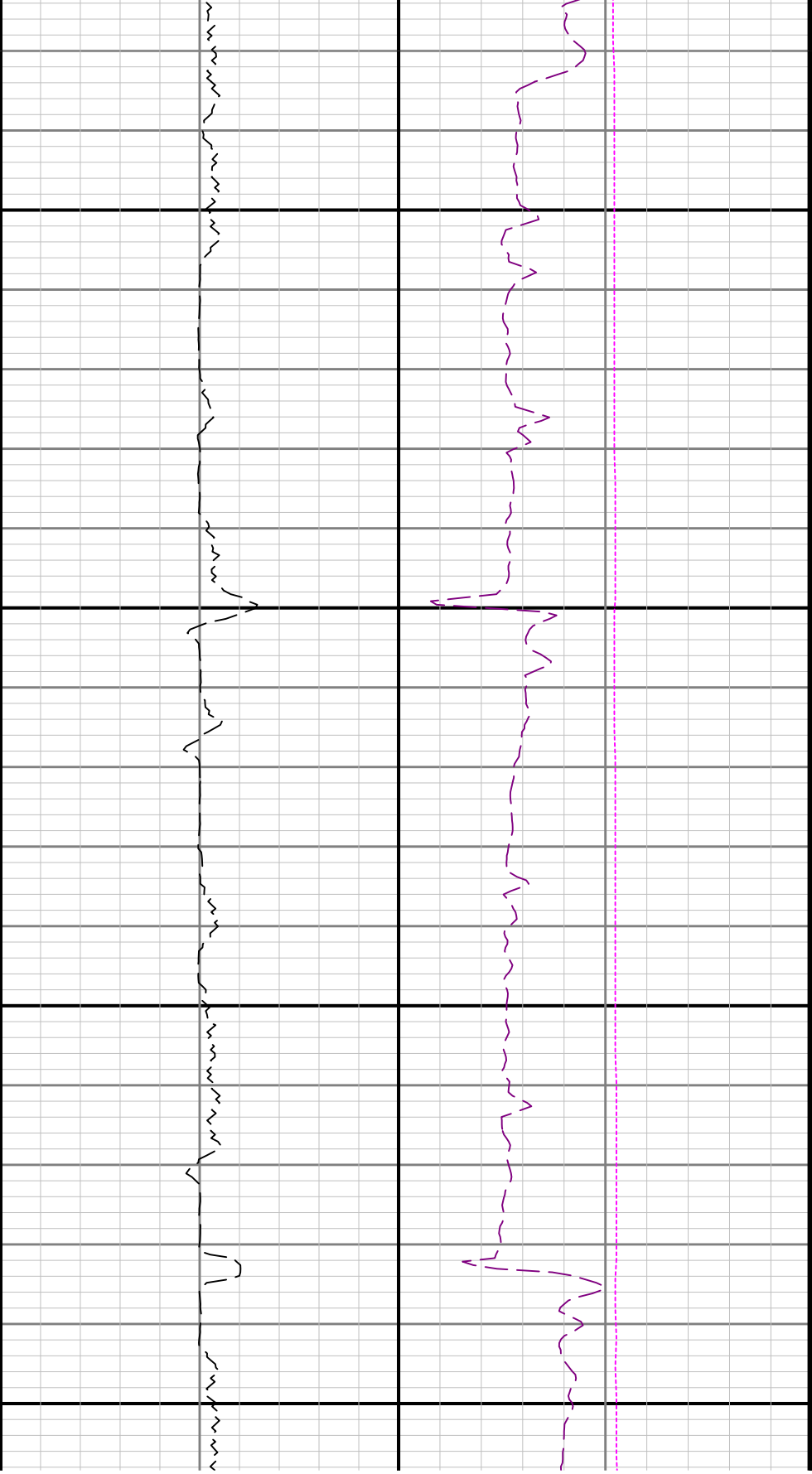


4400

4500

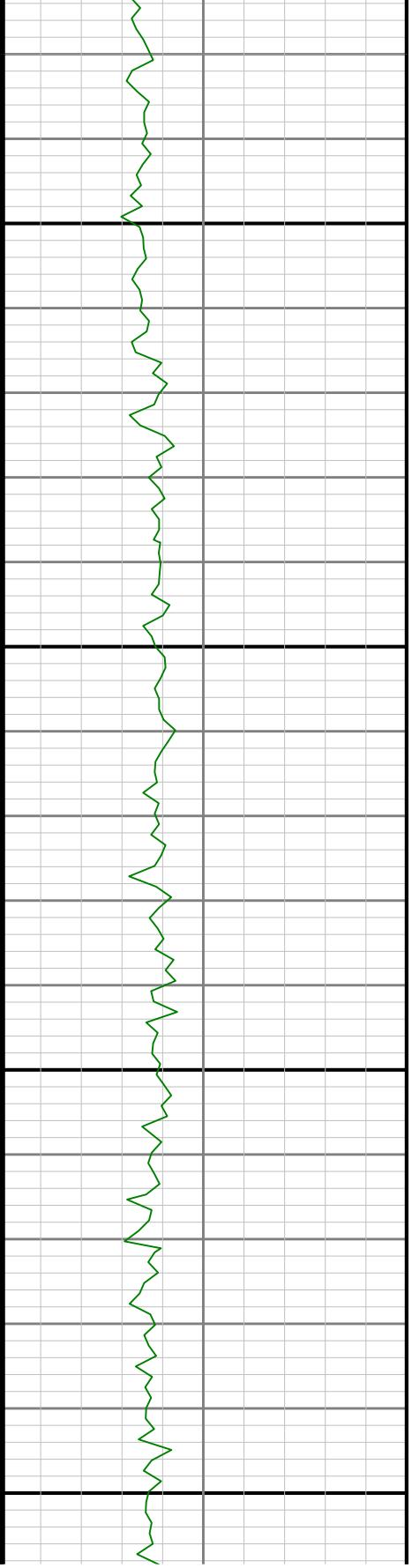






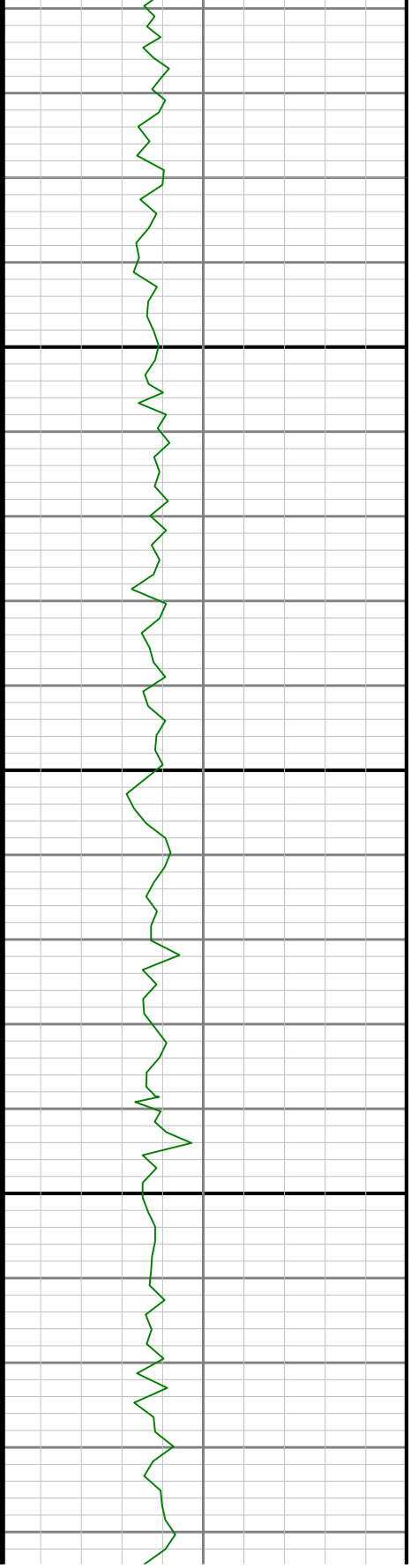
4600

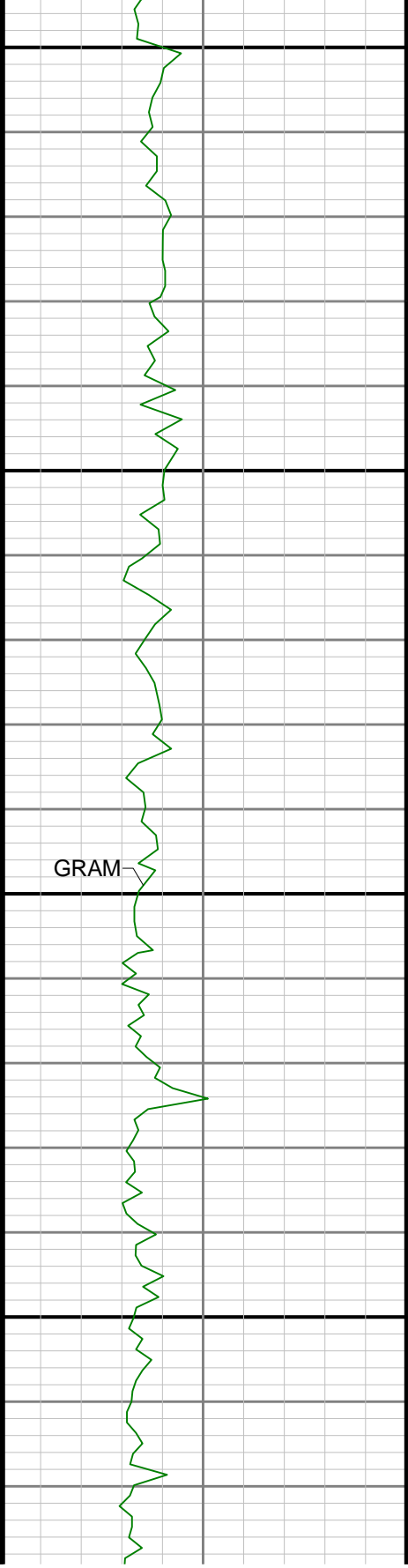
4700





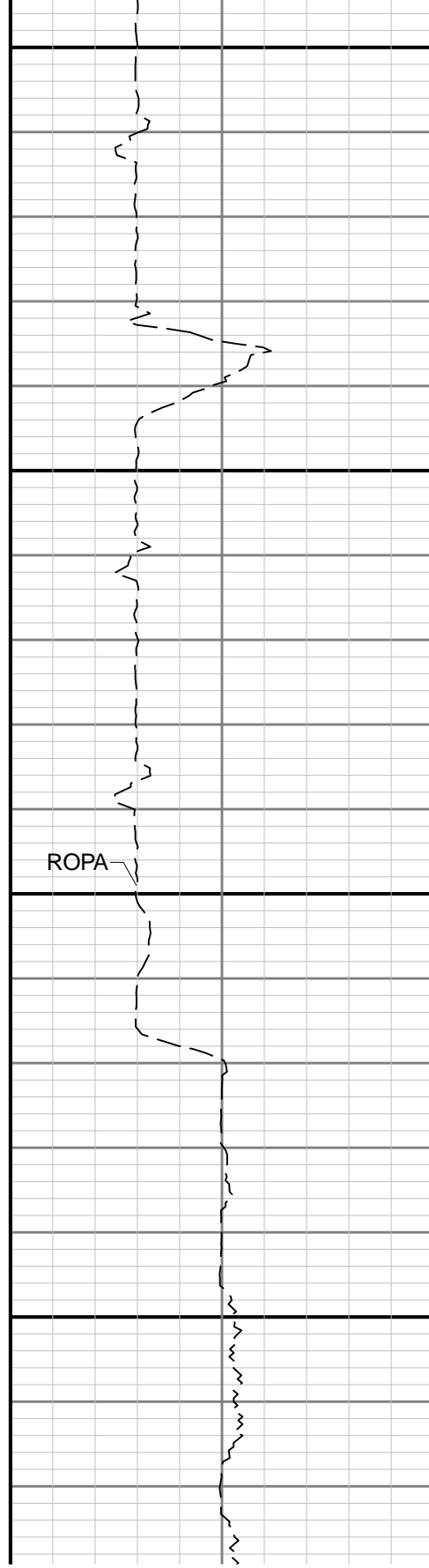
4800



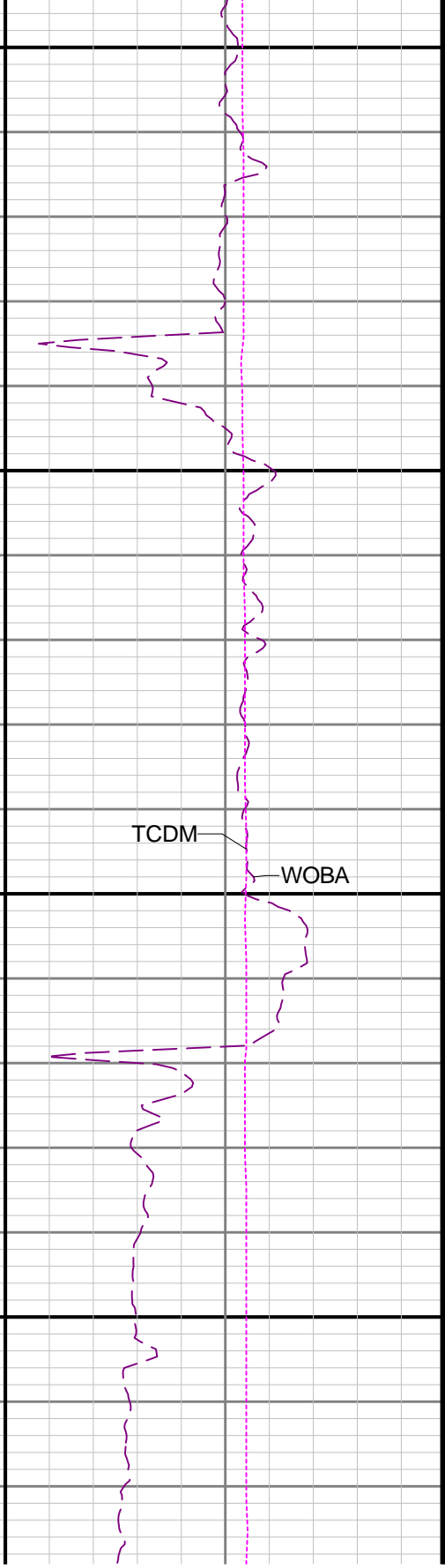


4900

5000

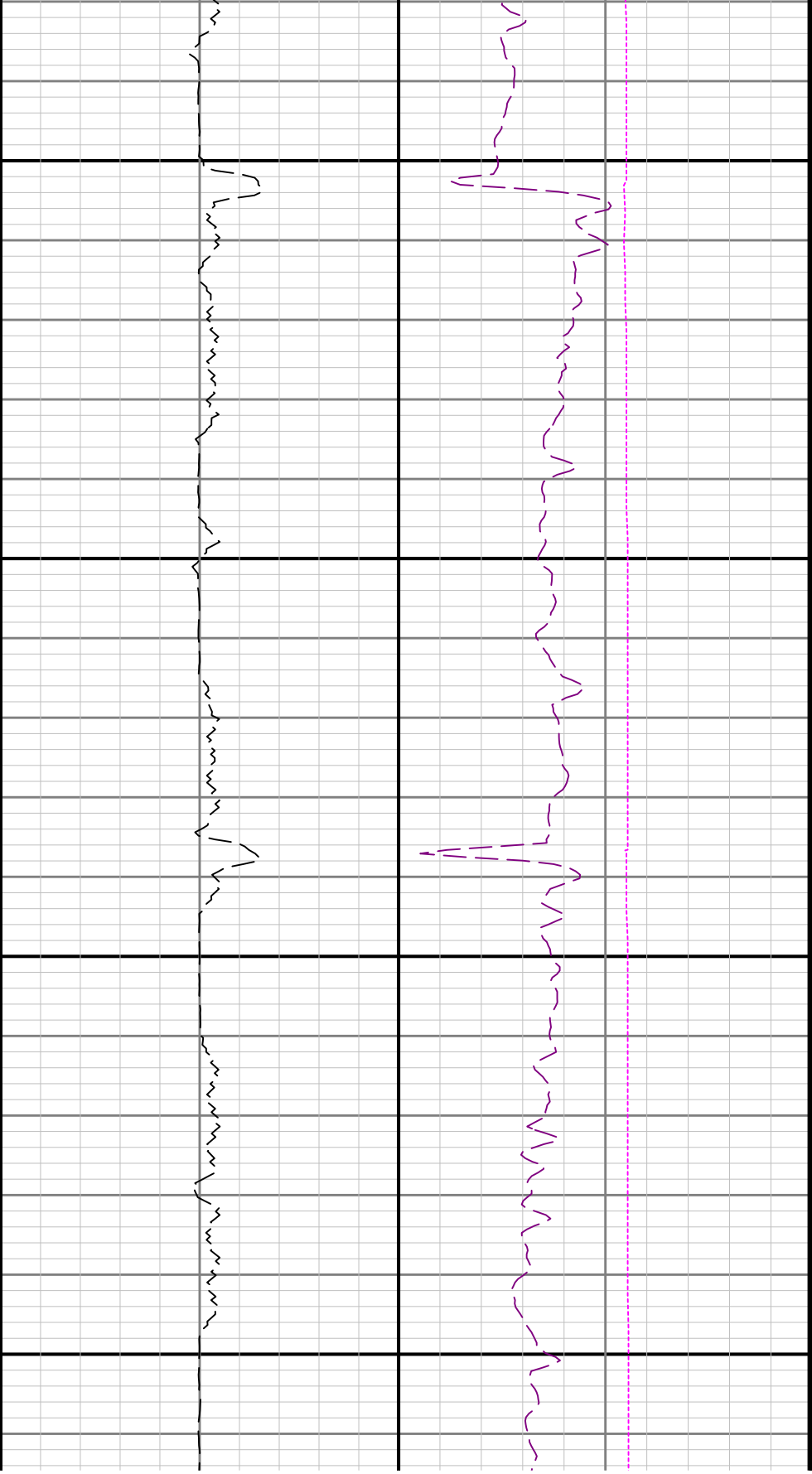


ROPA



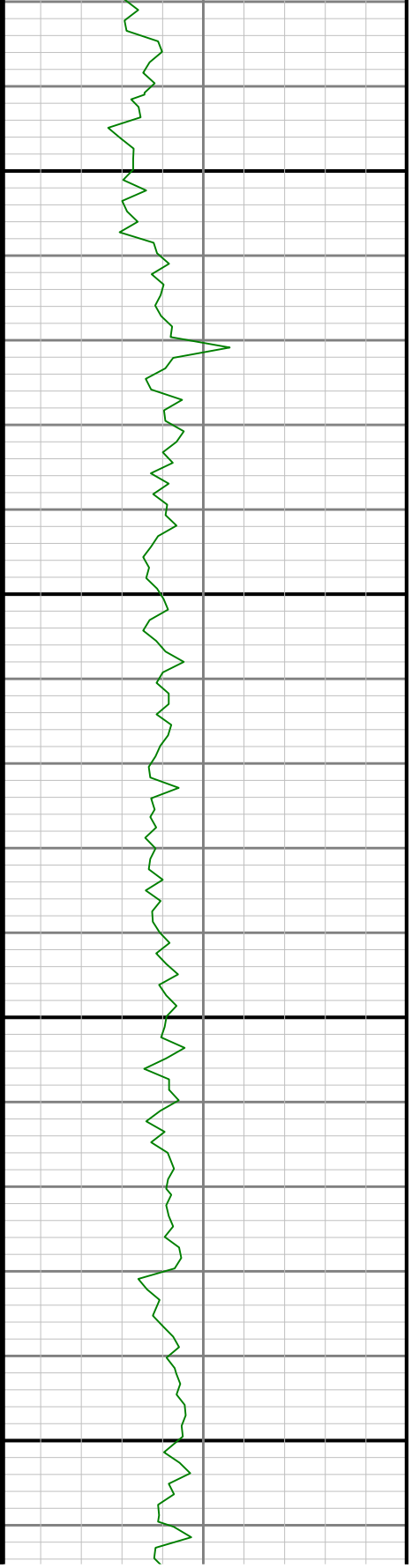
TCDM

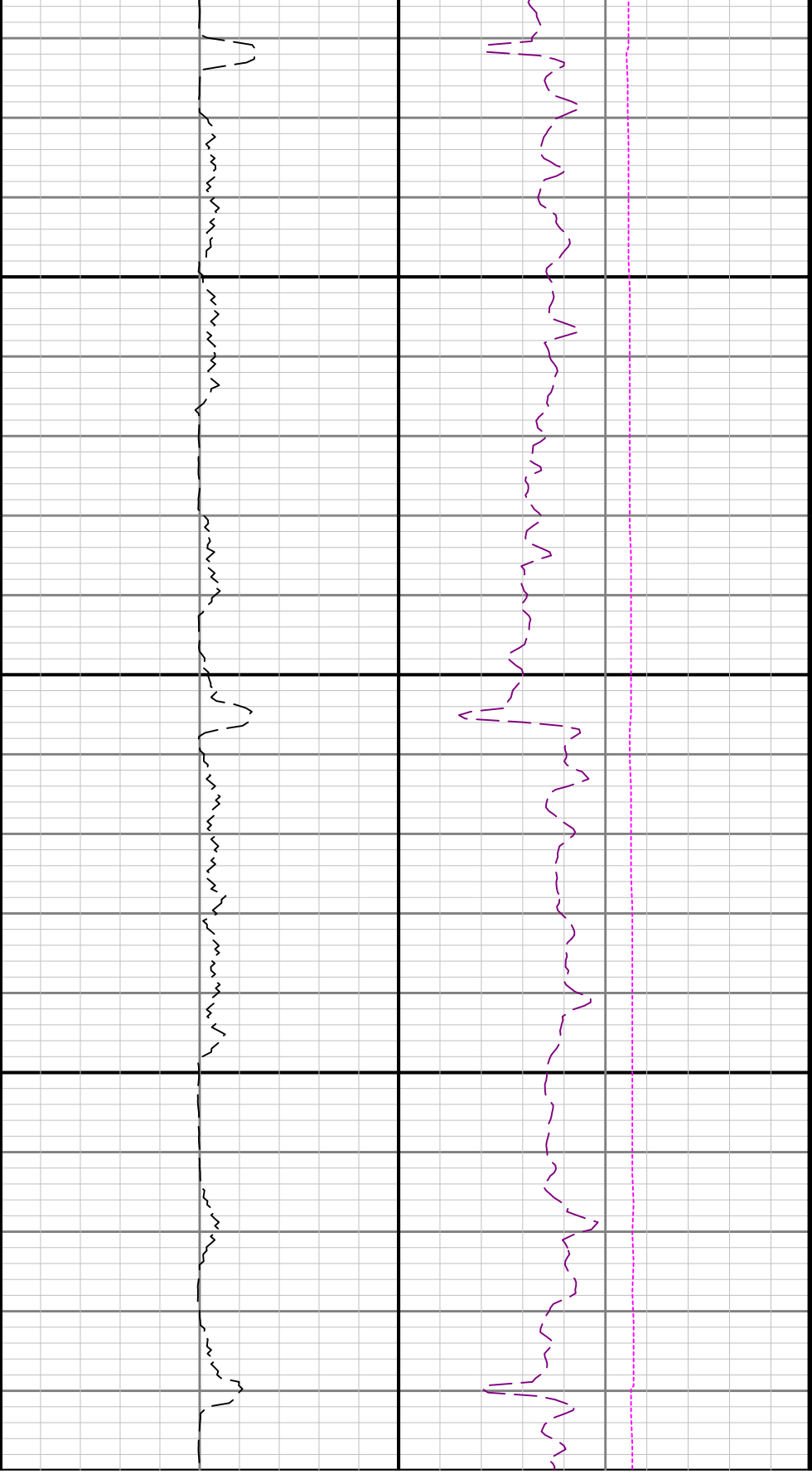
WOBA



5100

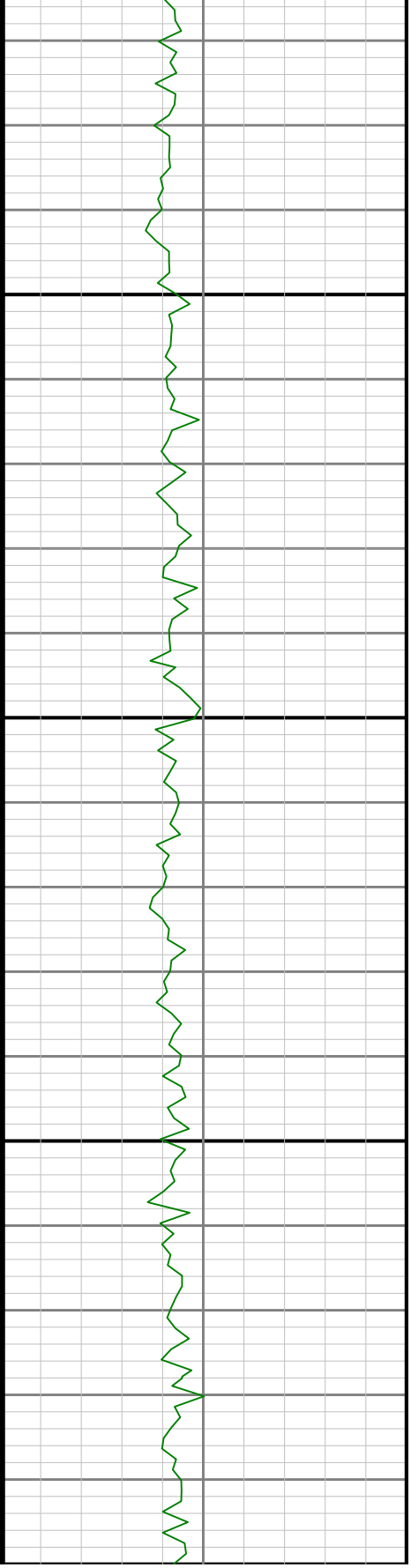
5200

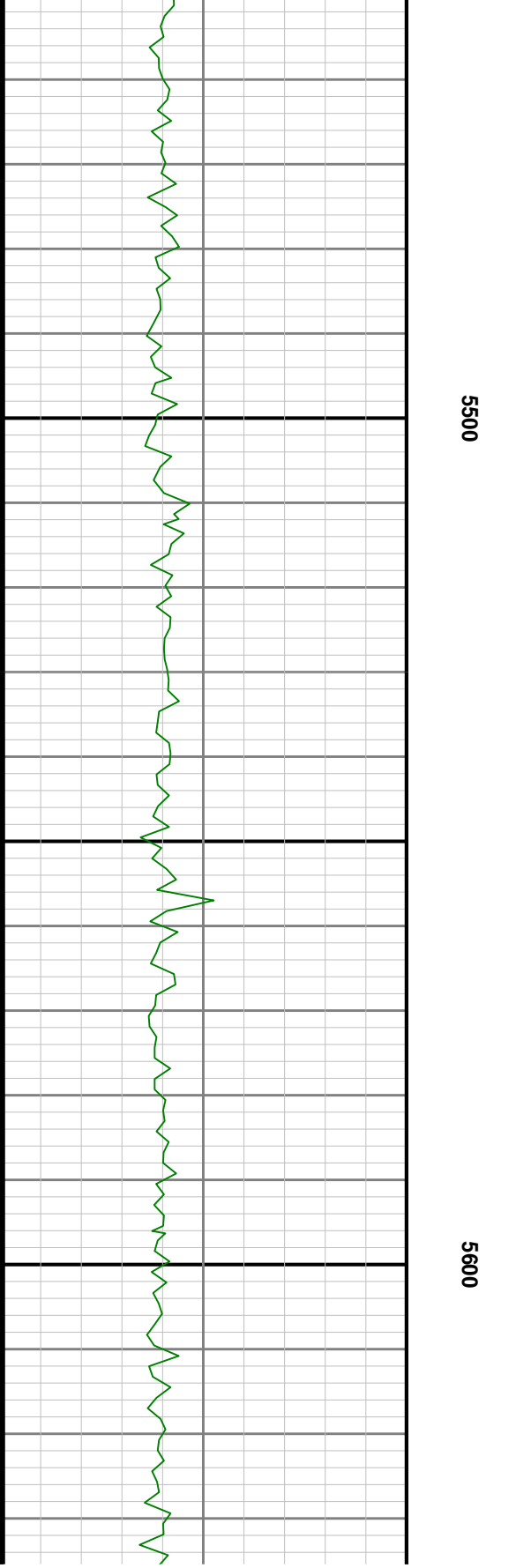
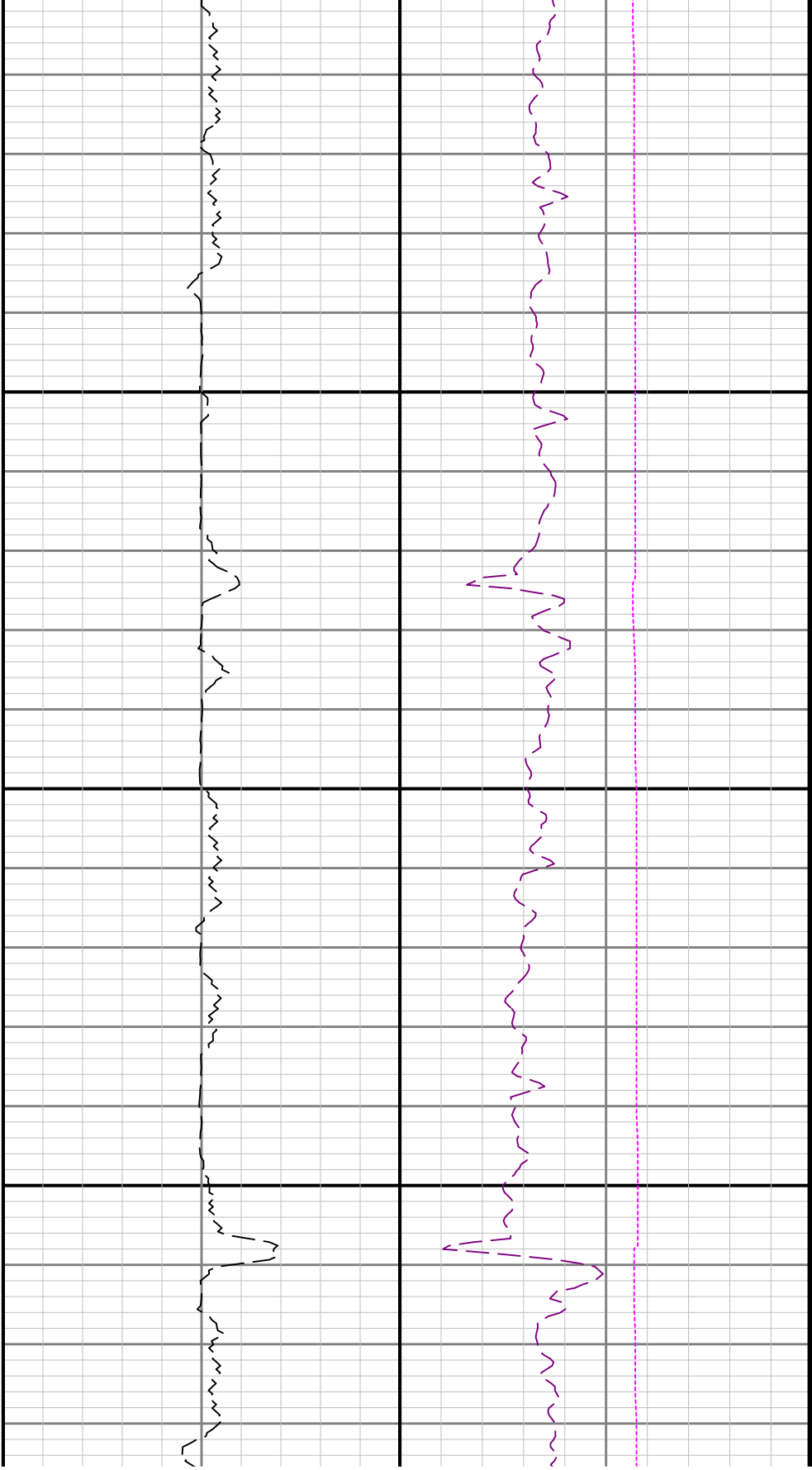


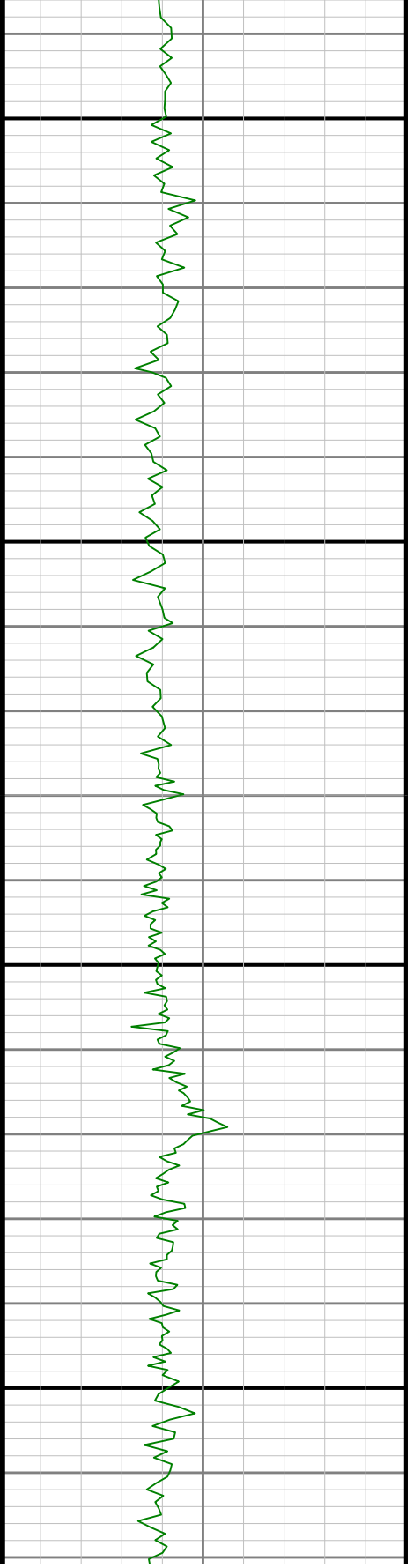
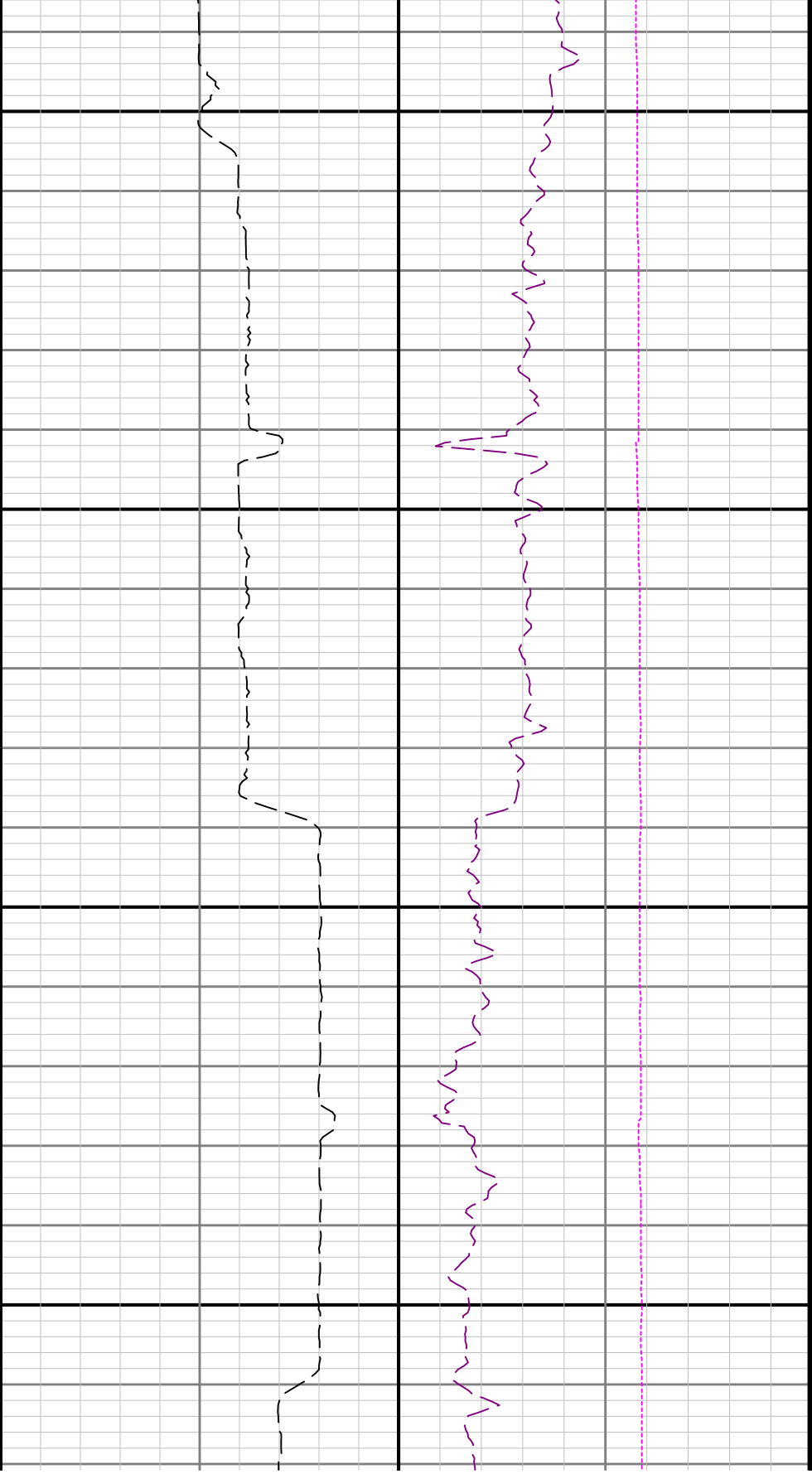


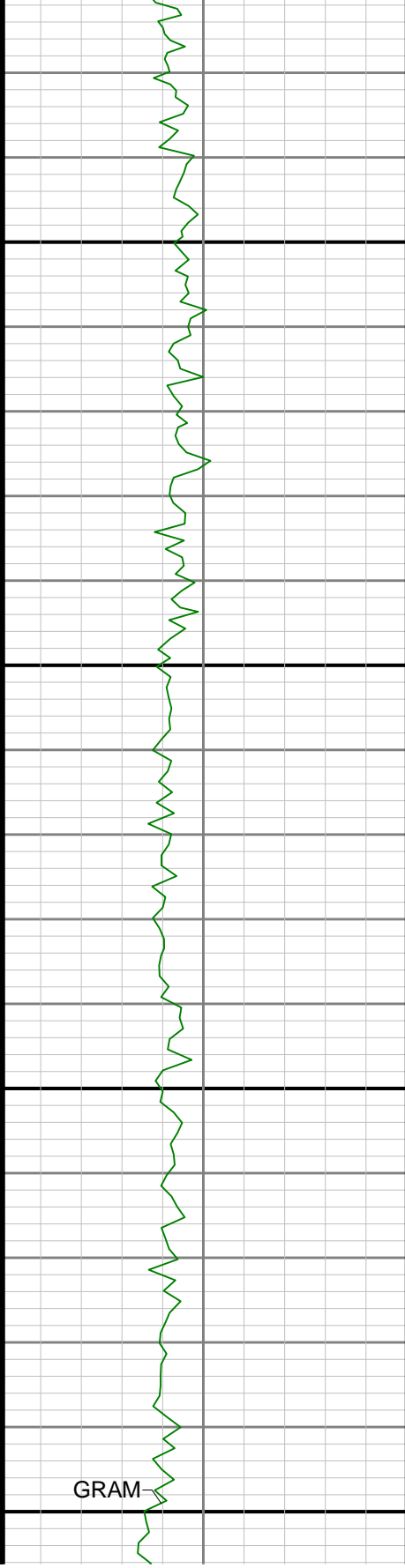
5300

5400



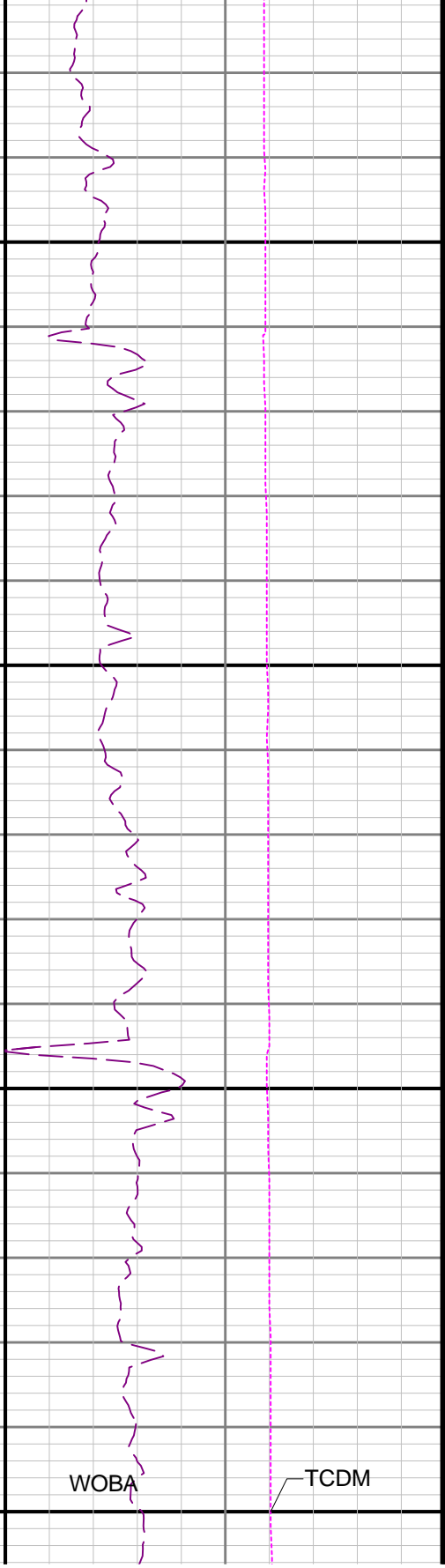
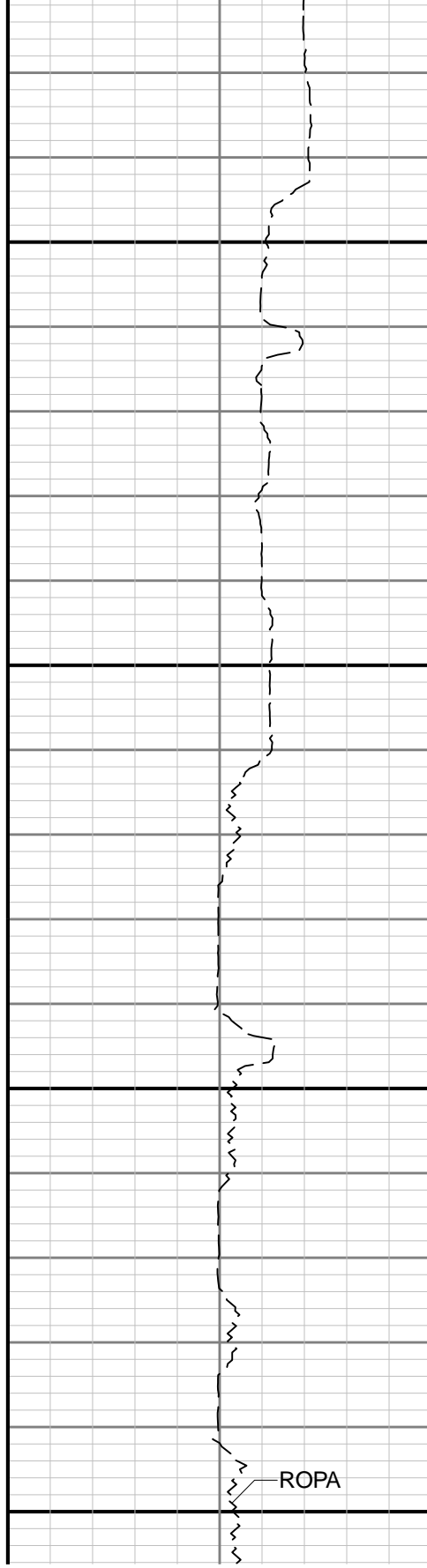




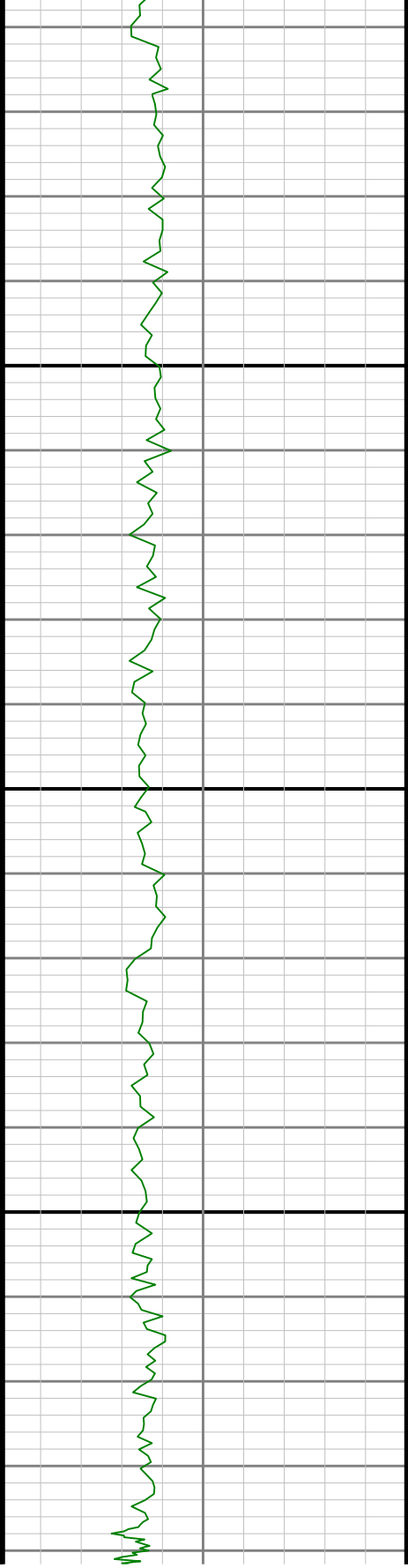


5900

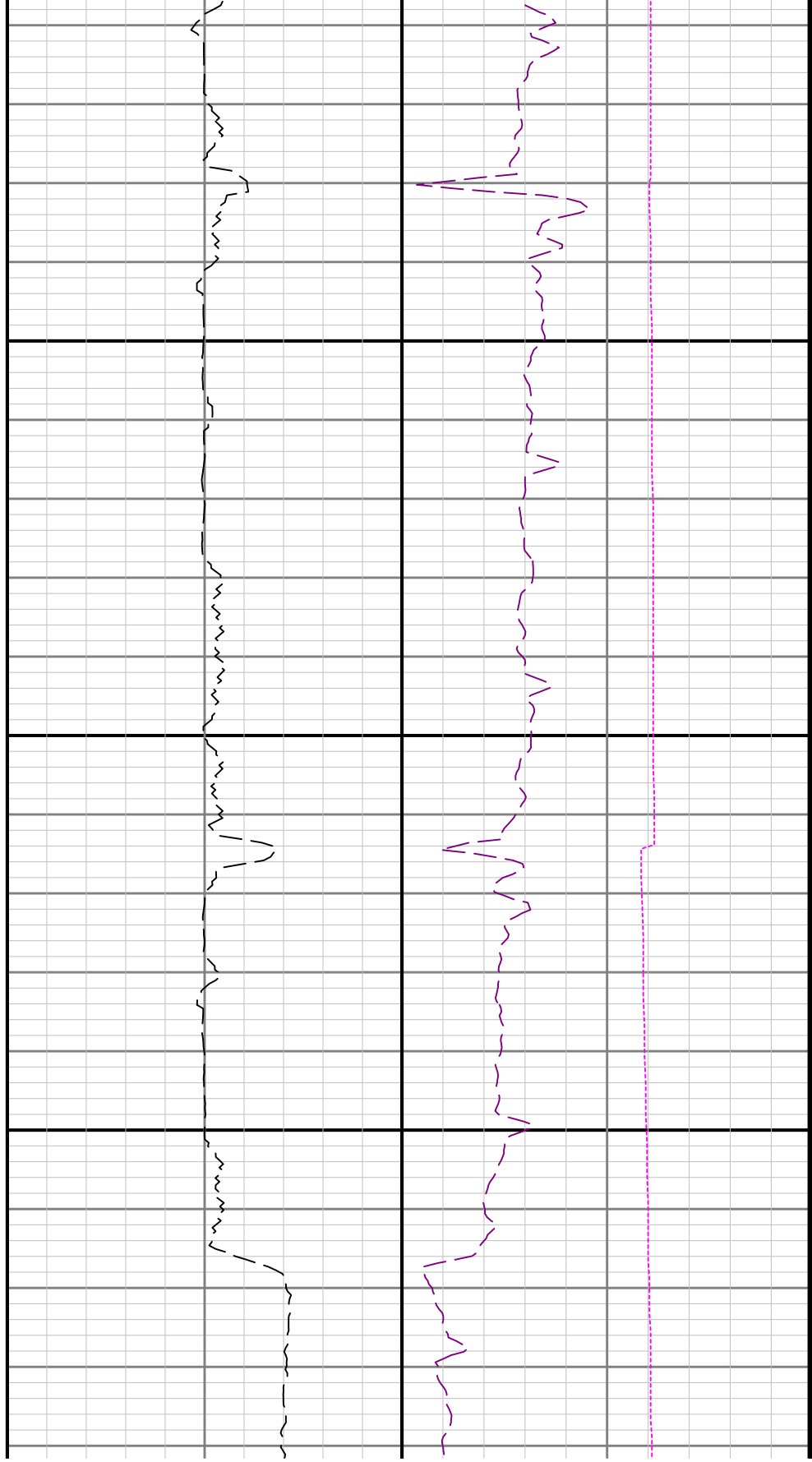
6000

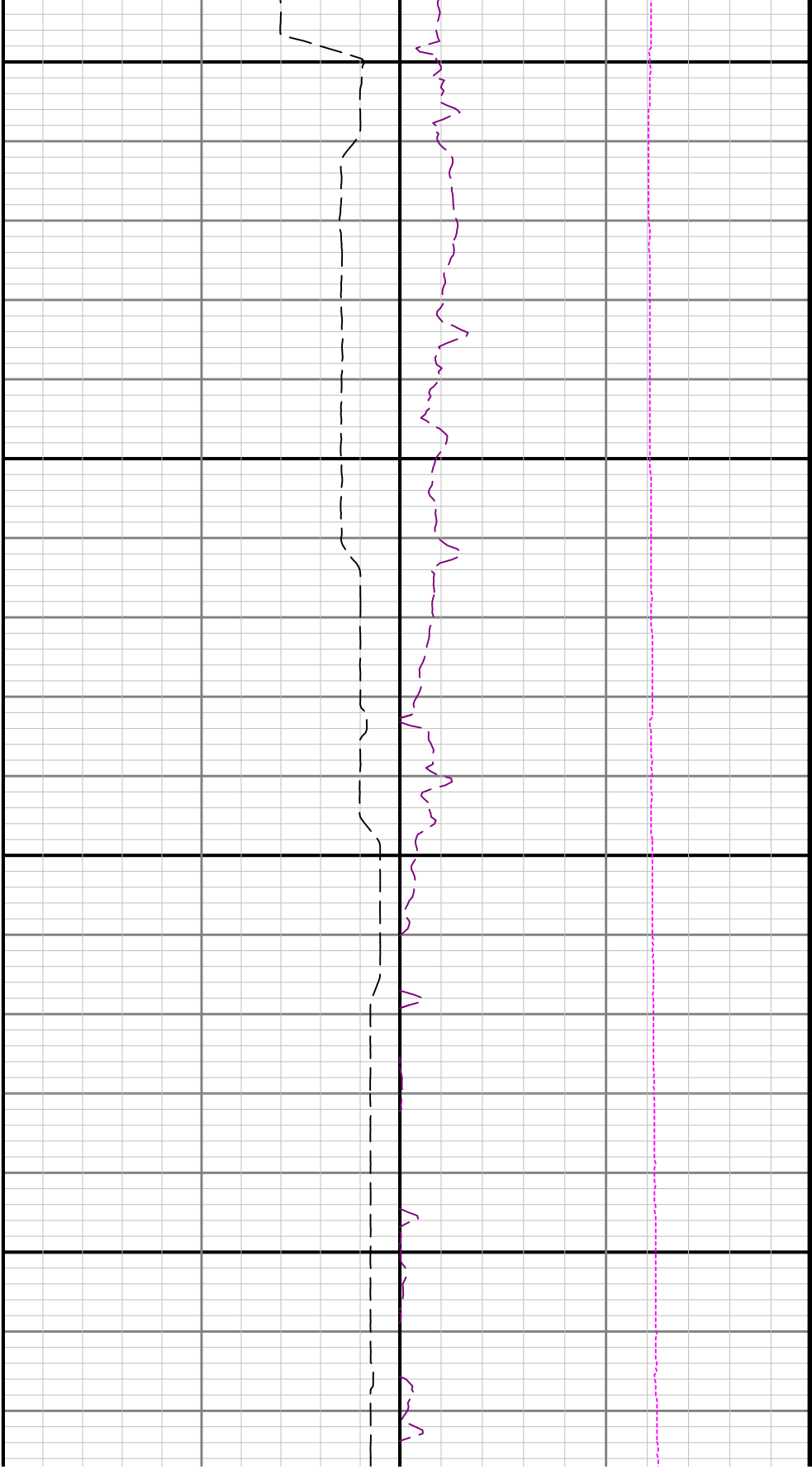






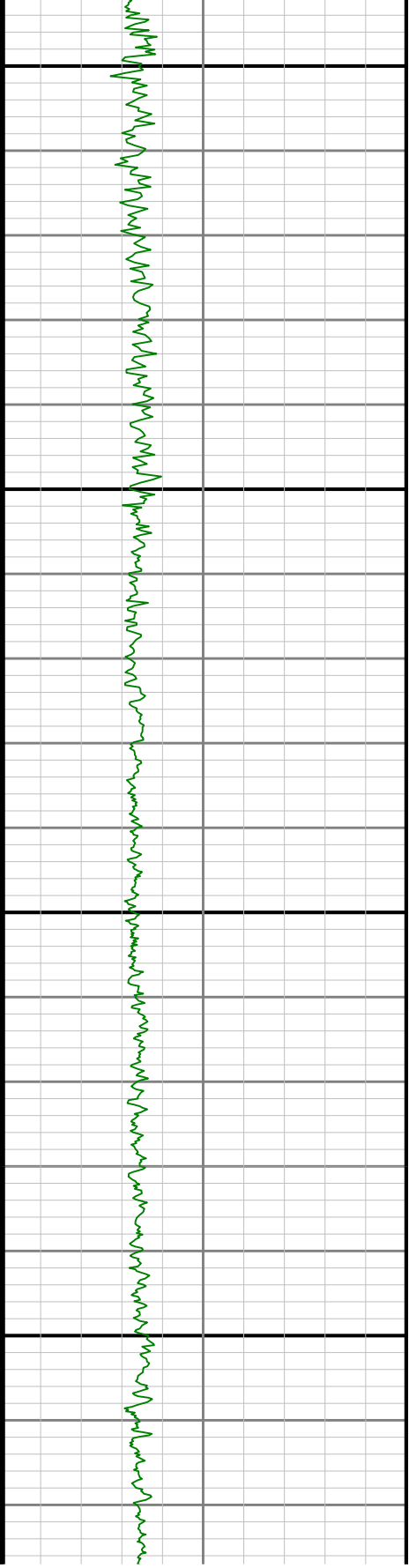
6100

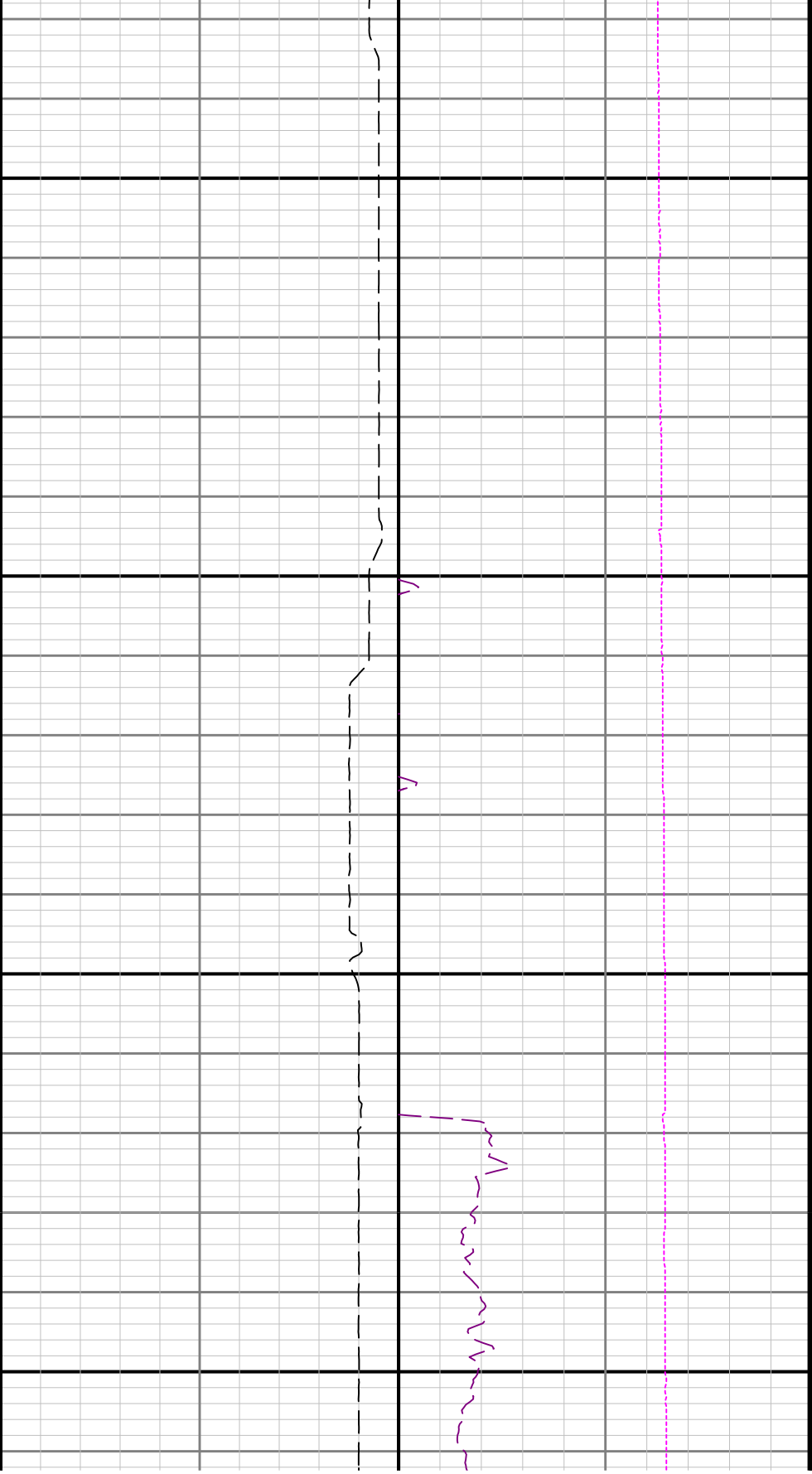




6200

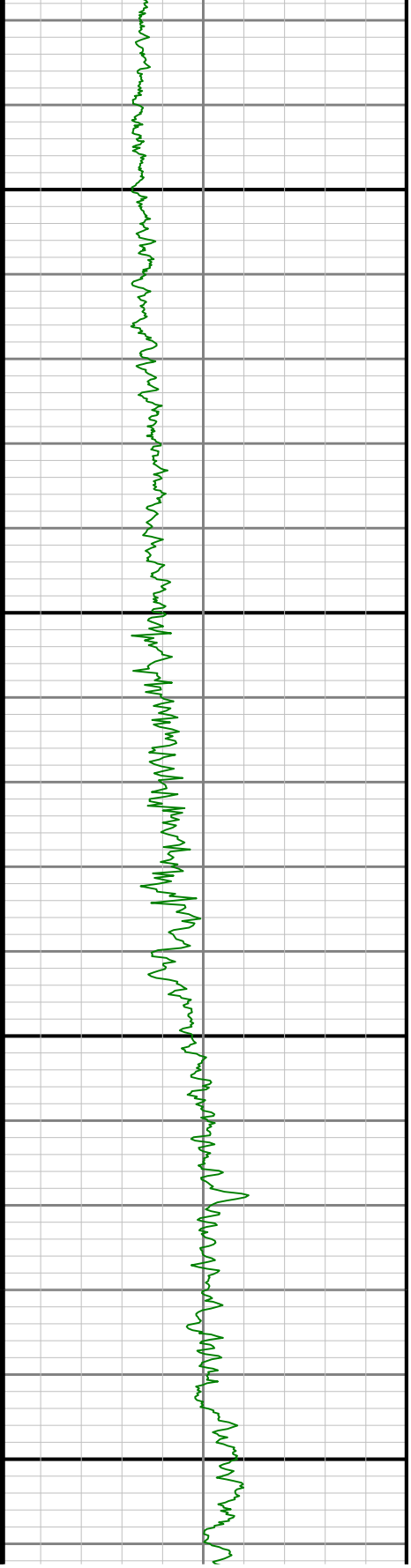
6300

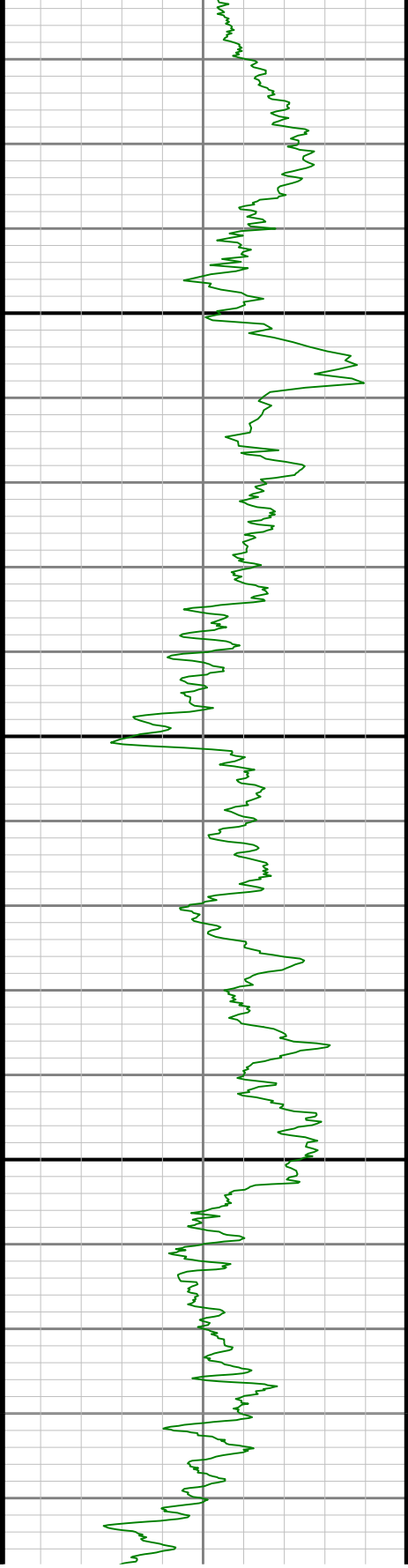




6400

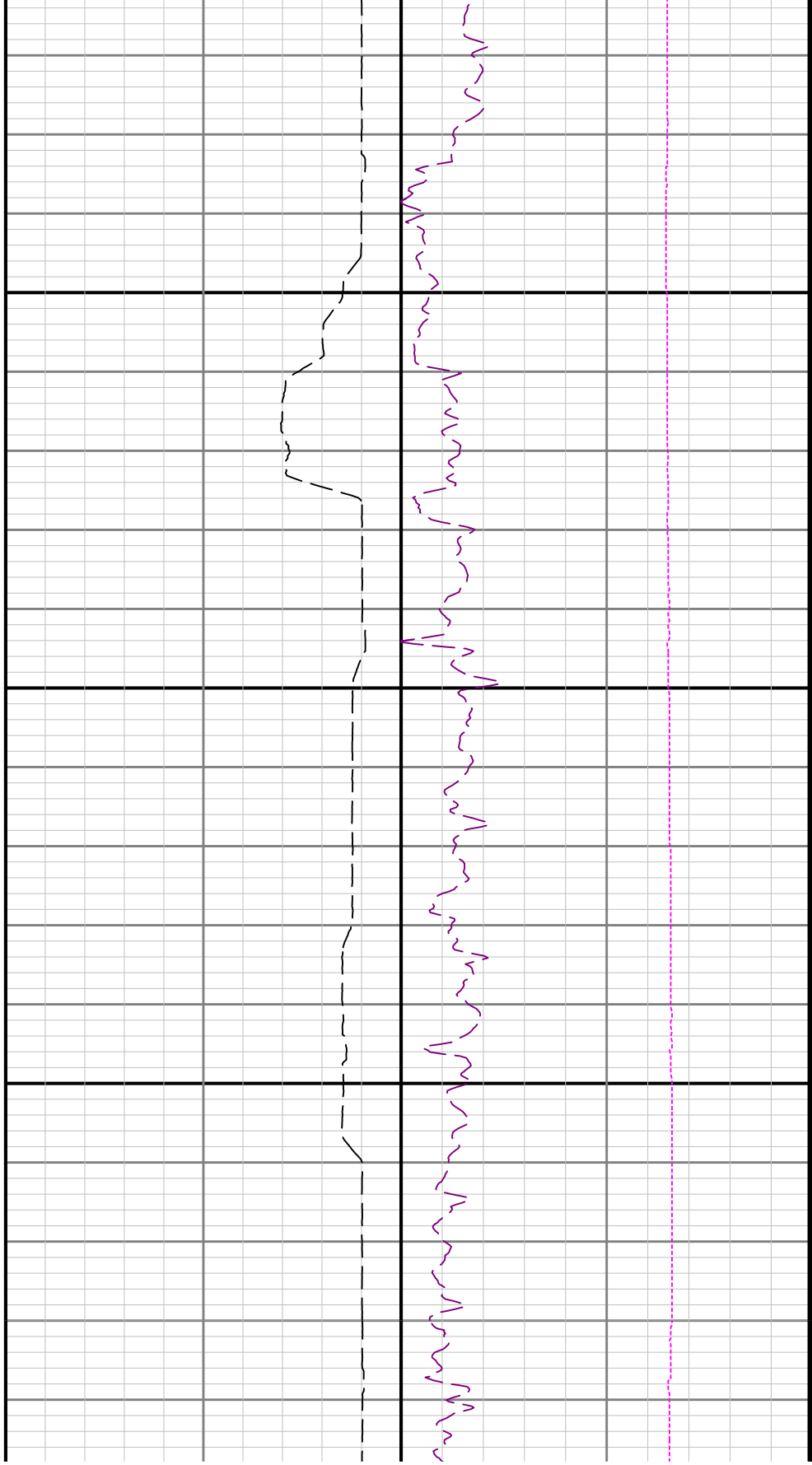
6500

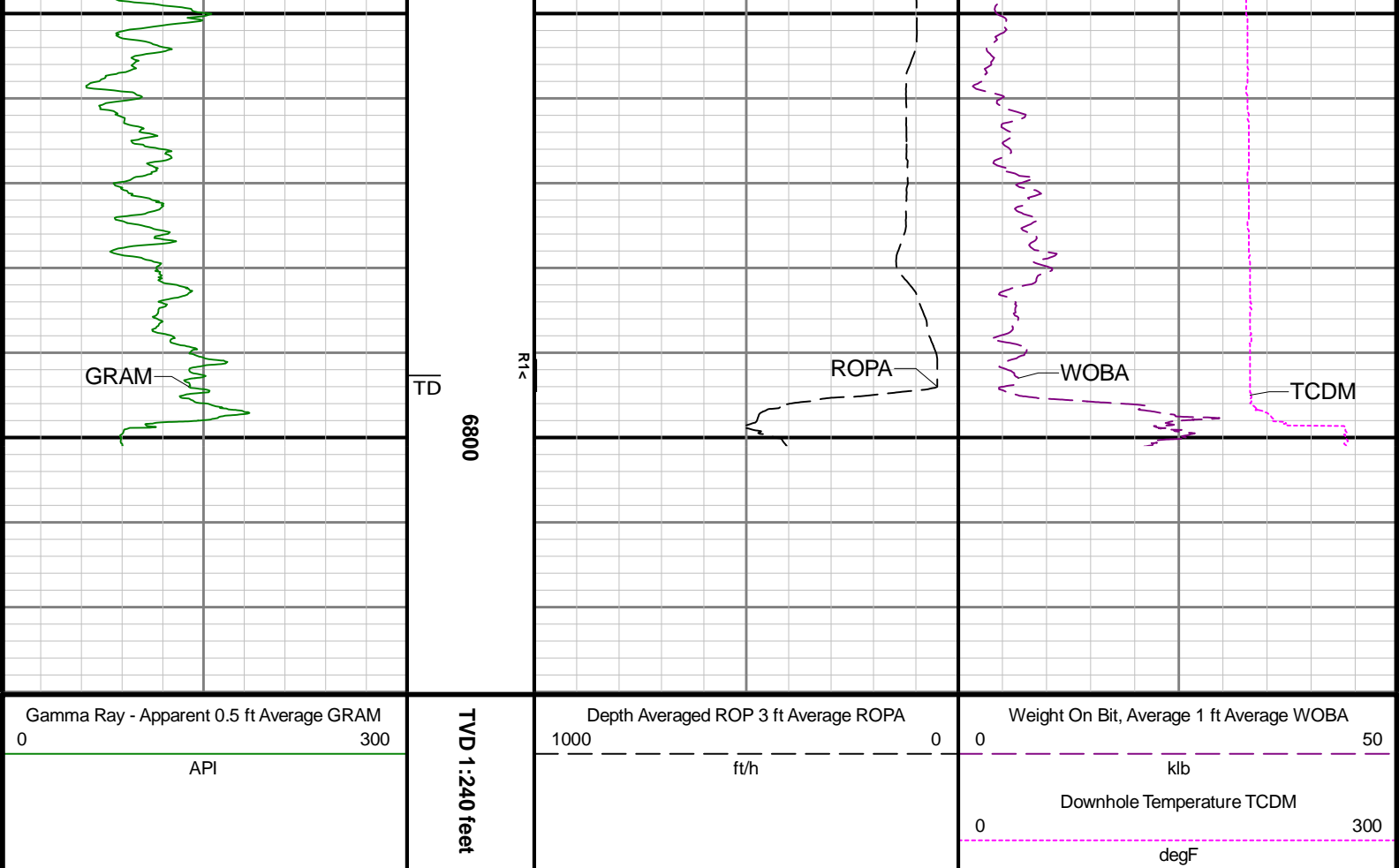




6600

6700





Directional Survey Summary

Latitude:	40° 27' 57.760" N	Longitude:	104° 33' 39.294" W
North Reference:	Grid	Drill Depth Zero:	Rig Floor
Vertical Datum is:	Mean Sea Level	Vertical Datum to DDZ: (ft)	4757.00
Vertical Section North: (ft)	0.00	Vertical Section East: (ft)	0.00
Vertical Section Azimuth: (deg)	167.47		
Grid Convergence: (deg)	-0.60	Magnetic Declination: (deg)	7.60
Total Correction: (deg)	7.00	TVD Calculation Method:	Minimum Curvature
Magnetic Correction:	Off	Local Magnetic Field: (nT)	51903
Local Magnetic Dip Angle: (deg)	66.79	Local Gravity Field: (m/s2)	9.800

Tie-In / Projection	Measured Depth (ft)	Inclination (deg)	Azimuth (deg)	Temperature (degF)	North (ft)	East (ft)	True Vertical Depth (ft)	TVD Subsea (ft)	Vertical Section (ft)	Course Length (ft)	Dog Leg Severity (deg/100ft)	Build Rate (deg/100ft)	Turn Rate (deg/100ft)
Tie-In	0.00	0.00	0.00	N/A	0.00	0.00	0.00	-4757.00	0.00	0.00	0.00	0.00	0.00
	78.00	0.23	81.80	N/A	0.02	0.15	78.00	-4679.00	0.01	78.00	0.29	0.29	104.87
	171.00	0.59	72.79	N/A	0.19	0.80	171.00	-4586.00	-0.01	93.00	0.39	0.39	-9.69
	262.00	0.57	32.00	N/A	0.71	1.48	261.99	-4495.01	-0.37	91.00	0.44	-0.02	-44.82
	357.00	0.38	62.26	N/A	1.26	2.01	356.99	-4400.01	-0.79	95.00	0.32	-0.20	31.85
	451.00	0.27	203.82	N/A	1.20	2.20	450.99	-4306.01	-0.70	94.00	0.65	-0.12	150.60
	546.00	0.30	316.40	N/A	1.18	1.94	545.99	-4211.01	-0.73	95.00	0.50	0.03	118.51
	640.00	0.03	41.99	N/A	1.37	1.79	639.99	-4117.01	-0.95	94.00	0.32	-0.29	91.05
	735.00	0.14	146.20	N/A	1.30	1.87	734.99	-4022.01	-0.86	95.00	0.16	0.12	109.69
	829.00	0.33	180.19	N/A	0.93	1.93	828.99	-3928.01	-0.49	94.00	0.24	0.20	36.16
	924.00	0.06	163.16	N/A	0.61	1.94	923.99	-3833.01	-0.17	95.00	0.29	-0.28	-17.93
	1019.00	0.28	199.33	N/A	0.34	1.88	1018.99	-3738.01	0.07	95.00	0.25	0.23	38.07
	1113.00	0.32	189.80	N/A	-0.13	1.76	1112.98	-3644.02	0.51	94.00	0.07	0.04	-10.14

	1208.00	0.17	196.45	N/A	-0.53	1.67	1207.98	-3549.02	0.88	95.00	0.16	-0.16	7.00
	1302.00	0.29	205.15	N/A	-0.88	1.53	1301.98	-3455.02	1.19	94.00	0.13	0.13	9.26
	1397.00	0.11	174.55	N/A	-1.19	1.44	1396.98	-3360.02	1.47	95.00	0.21	-0.19	-32.21
	1491.00	0.22	252.12	N/A	-1.33	1.28	1490.98	-3266.02	1.58	94.00	0.24	0.12	82.52
	1586.00	0.34	342.27	N/A	-1.12	1.02	1585.98	-3171.02	1.31	95.00	0.43	0.13	94.89
	1680.00	0.89	3.96	N/A	-0.13	0.98	1679.98	-3077.02	0.34	94.00	0.63	0.59	23.07
	1775.00	1.25	16.46	N/A	1.60	1.33	1774.96	-2982.04	-1.28	95.00	0.45	0.38	13.16
	1869.00	1.60	27.03	N/A	3.76	2.21	1868.93	-2888.07	-3.19	94.00	0.46	0.37	11.24
	1931.00	1.54	30.91	N/A	5.24	3.04	1930.91	-2826.09	-4.46	62.00	0.20	-0.10	6.26
	1993.00	0.07	312.73	112.2	5.98	3.44	1992.90	-2764.10	-5.10	62.00	2.46	-2.37	-126.10
	2087.00	2.54	96.97	112.2	5.77	5.46	2086.87	-2670.13	-4.45	94.00	2.76	2.63	153.44
	2182.00	5.46	94.35	120.3	5.17	12.06	2181.63	-2575.37	-2.43	95.00	3.08	3.07	-2.76
	2277.00	7.13	93.90	120.3	4.43	22.45	2276.05	-2480.95	0.55	95.00	1.76	1.76	-0.47
	2371.00	9.48	93.07	123.0	3.62	36.00	2369.06	-2387.94	4.28	94.00	2.50	2.50	-0.88
	2466.00	13.66	92.63	125.7	2.68	55.03	2462.11	-2294.89	9.32	95.00	4.40	4.40	-0.46
	2560.00	17.22	91.81	128.4	1.73	80.03	2552.70	-2204.30	15.67	94.00	3.79	3.79	-0.87
	2655.00	20.23	91.75	131.1	0.79	110.51	2642.66	-2114.34	23.21	95.00	3.17	3.17	-0.06
	2750.00	23.67	91.51	131.1	-0.22	146.00	2730.76	-2026.24	31.89	95.00	3.62	3.62	-0.25
	2844.00	27.20	93.64	133.8	-2.08	186.32	2815.64	-1941.36	42.45	94.00	3.88	3.76	2.27
	2939.00	27.90	99.51	136.5	-7.13	229.92	2899.88	-1857.12	56.84	95.00	2.95	0.74	6.18
	3033.00	27.58	99.40	136.5	-14.32	273.07	2983.08	-1773.92	73.22	94.00	0.34	-0.34	-0.12
	3128.00	27.70	98.91	136.5	-21.33	316.58	3067.24	-1689.76	89.51	95.00	0.27	0.13	-0.52
	3223.00	26.90	90.70	139.2	-25.01	359.90	3151.69	-1605.31	102.50	95.00	4.05	-0.84	-8.64
	3318.00	25.66	94.62	139.2	-26.93	401.90	3236.87	-1520.13	113.49	95.00	2.24	-1.31	4.13
	3412.00	27.17	92.05	141.9	-29.34	443.64	3321.06	-1435.94	124.89	94.00	2.01	1.61	-2.73
	3507.00	27.55	92.27	141.9	-30.99	487.27	3405.43	-1351.57	135.96	95.00	0.41	0.40	0.23
	3601.00	27.21	93.61	141.9	-33.20	530.44	3488.90	-1268.10	147.49	94.00	0.75	-0.36	1.43
	3696.00	27.27	92.09	144.6	-35.36	573.86	3573.37	-1183.63	159.02	95.00	0.74	0.06	-1.60
	3790.00	27.86	91.29	144.6	-36.64	617.34	3656.70	-1100.30	169.70	94.00	0.74	0.63	-0.85
	3885.00	27.60	91.74	144.6	-37.81	661.53	3740.79	-1016.21	180.43	95.00	0.35	-0.27	0.47
	3980.00	27.73	90.80	147.3	-38.79	705.63	3824.93	-932.07	190.95	95.00	0.48	0.14	-0.99
	4075.00	27.68	91.16	147.3	-39.54	749.79	3909.03	-847.97	201.27	95.00	0.18	-0.05	0.38
	4169.00	27.63	90.66	147.3	-40.24	793.41	3992.30	-764.70	211.41	94.00	0.25	-0.05	-0.53
	4264.00	27.46	91.71	150.0	-41.14	837.33	4076.53	-680.47	221.82	95.00	0.54	-0.18	1.11
	4358.00	27.43	91.72	150.0	-42.44	880.64	4159.95	-597.05	232.48	94.00	0.03	-0.03	0.01
	4453.00	27.30	92.27	150.0	-43.96	924.28	4244.32	-512.68	243.44	95.00	0.30	-0.14	0.58
	4547.00	27.52	91.69	152.7	-45.45	967.52	4327.76	-429.24	254.28	94.00	0.37	0.23	-0.62
	4642.00	27.70	92.20	152.7	-46.95	1011.53	4411.95	-345.05	265.28	95.00	0.31	0.19	0.54
	4736.00	27.50	92.49	155.4	-48.73	1055.04	4495.25	-261.75	276.46	94.00	0.26	-0.21	0.31
	4831.00	27.26	92.29	155.4	-50.55	1098.69	4579.61	-177.39	287.71	95.00	0.27	-0.25	-0.21
	4925.00	27.48	92.61	158.1	-52.40	1141.87	4663.08	-93.92	298.88	94.00	0.28	0.23	0.34
	5020.00	27.25	92.84	158.1	-54.48	1185.48	4747.45	-9.55	310.37	95.00	0.27	-0.24	0.24
	5114.00	27.48	92.65	160.8	-56.55	1228.64	4830.93	73.93	321.75	94.00	0.26	0.24	-0.20
	5209.00	26.98	92.98	160.8	-58.68	1272.06	4915.41	158.41	333.26	95.00	0.55	-0.53	0.35
	5303.00	27.75	91.20	163.5	-60.25	1315.23	4998.89	241.89	344.15	94.00	1.20	0.82	-1.89
	5398.00	27.51	91.87	163.5	-61.42	1359.27	5083.05	326.05	354.86	95.00	0.41	-0.25	0.71
	5493.00	27.07	92.97	166.2	-63.26	1402.79	5167.48	410.48	366.09	95.00	0.70	-0.46	1.16
	5587.00	26.96	94.07	166.2	-65.88	1445.41	5251.23	494.23	377.89	94.00	0.54	-0.12	1.17
	5682.00	26.94	92.71	168.9	-68.43	1488.38	5335.91	578.91	389.70	95.00	0.65	-0.02	-1.43
	5777.00	26.93	92.64	168.9	-70.44	1531.37	5420.60	663.60	400.99	95.00	0.03	-0.01	-0.07
	5871.00	27.24	93.77	171.6	-72.83	1574.10	5504.30	747.30	412.60	94.00	0.64	0.33	1.20
	5966.00	26.96	95.01	171.6	-76.14	1617.25	5588.87	831.87	425.19	95.00	0.66	-0.29	1.31
	6060.00	27.36	96.92	174.3	-80.60	1659.92	5672.50	915.50	438.81	94.00	1.02	0.43	2.03
	6155.00	25.13	92.55	174.3	-84.13	1701.75	5757.71	1000.71	451.33	95.00	3.10	-2.35	-4.60
	6250.00	27.41	92.08	177.0	-85.82	1743.76	5842.89	1085.89	462.09	95.00	2.41	2.40	-0.49
	6344.00	27.16	92.18	179.7	-87.43	1786.82	5926.44	1169.44	473.00	94.00	0.27	-0.27	0.11
	6439.00	26.96	93.11	179.7	-89.42	1829.99	6011.04	1254.04	484.31	95.00	0.49	-0.21	0.98
	6533.00	26.91	92.04	177.0	-91.33	1872.53	6094.84	1337.84	495.40	94.00	0.52	-0.05	-1.14
	6628.00	26.05	92.35	179.7	-92.95	1914.85	6179.87	1422.87	506.17	95.00	0.92	-0.91	0.33
	6722.00	26.81	98.05	182.5	-96.77	1956.47	6264.06	1507.06	518.92	94.00	2.82	0.81	6.06
	6817.00	30.40	112.37	185.2	-108.93	1999.98	6347.55	1590.55	540.24	95.00	8.12	3.78	15.07
	6912.00	24.55	126.43	187.5	-124.43	2046.85	6436.88	1686.88	574.58	94.00	2.28	-1.44	10.79

		6911.00	34.35	128.10	187.9	-134.49	2043.03	6426.96	1869.96	374.33	94.00	9.96	4.41	16.73
		7006.00	40.95	135.88	190.6	-173.52	2085.99	6502.10	1745.10	621.95	95.00	8.39	6.74	8.19
		7100.00	47.20	143.73	193.3	-223.53	2127.91	6569.65	1812.65	679.86	94.00	8.82	6.65	8.35
		7195.00	52.19	153.94	193.3	-285.47	2165.09	6631.17	1874.17	748.39	95.00	9.72	5.25	10.75
		7289.00	58.81	158.86	196.0	-356.44	2195.95	6684.41	1927.41	824.36	94.00	8.26	7.04	5.23
		7384.00	65.53	161.93	196.0	-435.55	2224.05	6728.74	1971.74	907.68	95.00	7.63	7.07	3.23
		7479.00	72.82	167.88	196.0	-521.20	2247.04	6762.52	2005.52	996.28	95.00	9.65	7.67	6.26
		7573.00	79.51	172.59	196.0	-611.08	2262.45	6785.00	2028.00	1087.37	94.00	8.62	7.12	5.01
		7668.00	88.18	178.71	198.7	-705.13	2269.57	6795.18	2038.18	1180.72	95.00	11.15	9.13	6.44
		7762.00	89.94	180.72	204.1	-799.11	2270.03	6796.72	2039.72	1272.56	94.00	2.84	1.87	2.14
		7857.00	89.82	180.02	206.8	-894.10	2269.42	6796.92	2039.92	1365.16	95.00	0.75	-0.13	-0.74
		7952.00	89.91	180.11	209.5	-989.10	2269.31	6797.15	2040.15	1457.87	95.00	0.13	0.09	0.09
		8046.00	89.51	180.11	212.2	-1083.10	2269.13	6797.62	2040.62	1549.59	94.00	0.43	-0.43	0.00
		8141.00	89.91	180.19	214.9	-1178.10	2268.88	6798.10	2041.10	1642.28	95.00	0.43	0.42	0.08
		8236.00	90.12	180.43	214.9	-1273.10	2268.37	6798.08	2041.08	1734.90	95.00	0.34	0.22	0.25
		8331.00	90.18	179.71	217.6	-1368.10	2268.25	6797.83	2040.83	1827.61	95.00	0.76	0.06	-0.76
		8425.00	90.12	177.97	217.6	-1462.07	2270.16	6797.58	2040.58	1919.76	94.00	1.85	-0.06	-1.85
		8519.00	91.02	180.04	220.3	-1556.05	2271.79	6796.65	2039.65	2011.85	94.00	2.40	0.96	2.20
		8613.00	88.49	179.17	220.3	-1650.04	2272.44	6797.05	2040.05	2103.74	94.00	2.85	-2.69	-0.93
		8708.00	89.94	179.63	220.3	-1745.02	2273.43	6798.35	2041.35	2196.68	95.00	1.60	1.53	0.48
		8803.00	89.88	179.38	223.0	-1840.02	2274.25	6798.50	2041.50	2289.59	95.00	0.27	-0.06	-0.26
		8897.00	90.00	179.30	223.0	-1934.01	2275.34	6798.60	2041.60	2381.58	94.00	0.15	0.13	-0.09
		8992.00	90.22	179.40	225.7	-2029.00	2276.41	6798.42	2041.42	2474.55	95.00	0.25	0.23	0.11
		9086.00	90.34	178.83	225.7	-2122.99	2277.87	6797.96	2040.96	2566.61	94.00	0.62	0.13	-0.61
		9181.00	91.54	178.93	225.7	-2217.96	2279.72	6796.40	2039.40	2659.72	95.00	1.27	1.26	0.11
		9275.00	90.46	181.66	228.4	-2311.93	2279.24	6794.76	2037.76	2751.35	94.00	3.12	-1.15	2.90
		9370.00	90.03	177.74	228.4	-2406.91	2279.73	6794.35	2037.35	2844.17	95.00	4.15	-0.45	-4.13
		9465.00	91.14	179.45	231.1	-2501.87	2282.06	6793.38	2036.38	2937.38	95.00	2.15	1.17	1.80
		9559.00	90.95	180.87	231.1	-2595.85	2281.80	6791.67	2034.67	3029.07	94.00	1.52	-0.20	1.51
		9654.00	89.82	179.09	231.1	-2690.85	2281.83	6791.03	2034.03	3121.80	95.00	2.22	-1.19	-1.87
		9749.00	89.88	179.91	231.1	-2785.84	2282.66	6791.28	2034.28	3214.72	95.00	0.87	0.06	0.86
		9843.00	90.28	177.85	233.8	-2879.82	2284.50	6791.15	2034.15	3306.85	94.00	2.23	0.43	-2.19
		9938.00	90.37	179.12	231.1	-2974.78	2287.01	6790.61	2033.61	3400.10	95.00	1.34	0.09	1.34
		10032.00	90.34	179.00	236.5	-3068.77	2288.55	6790.03	2033.03	3492.18	94.00	0.13	-0.03	-0.13
		10127.00	89.85	179.69	209.5	-3163.76	2289.64	6789.87	2032.87	3585.15	95.00	0.89	-0.52	0.73
		10221.00	89.97	179.75	217.6	-3257.76	2290.10	6790.02	2033.02	3677.01	94.00	0.14	0.13	0.06
		10316.00	90.31	179.66	223.0	-3352.76	2290.59	6789.78	2032.78	3769.85	95.00	0.37	0.36	-0.09
		10411.00	89.66	179.48	228.4	-3447.75	2291.30	6789.81	2032.81	3862.74	95.00	0.71	-0.68	-0.19
		10506.00	90.18	180.13	231.1	-3542.75	2291.63	6789.94	2032.94	3955.54	95.00	0.88	0.55	0.68
		10600.00	89.85	180.11	233.8	-3636.75	2291.43	6789.92	2032.92	4047.26	94.00	0.35	-0.35	-0.02
		10695.00	90.55	180.37	236.5	-3731.75	2291.03	6789.58	2032.58	4139.91	95.00	0.79	0.74	0.27
		10789.00	89.66	179.56	236.5	-3825.75	2291.09	6789.41	2032.41	4231.68	94.00	1.28	-0.95	-0.86
		10884.00	89.60	179.39	239.2	-3920.74	2291.96	6790.03	2033.03	4324.60	95.00	0.19	-0.06	-0.18
		10979.00	89.75	180.13	239.2	-4015.74	2292.36	6790.56	2033.56	4417.42	95.00	0.79	0.16	0.78
		11073.00	90.62	180.59	239.2	-4109.74	2291.77	6790.26	2033.26	4509.05	94.00	1.05	0.93	0.49
		11167.00	89.91	180.35	241.9	-4203.73	2290.99	6789.83	2032.83	4600.64	94.00	0.80	-0.76	-0.26
		11262.00	89.69	180.13	244.6	-4298.73	2290.60	6790.16	2033.16	4693.29	95.00	0.33	-0.23	-0.23
		11357.00	89.75	180.00	244.6	-4393.73	2290.49	6790.62	2033.62	4786.00	95.00	0.15	0.06	-0.14
		11451.00	89.85	180.28	244.6	-4487.73	2290.26	6790.95	2033.95	4877.71	94.00	0.32	0.11	0.30
		11546.00	89.94	178.68	247.3	-4582.72	2291.12	6791.12	2034.12	4970.63	95.00	1.69	0.09	-1.68
		11640.00	89.78	179.10	247.3	-4676.70	2292.94	6791.35	2034.35	5062.77	94.00	0.48	-0.17	0.45
		11735.00	89.75	179.22	247.3	-4771.69	2294.34	6791.74	2034.74	5155.80	95.00	0.13	-0.03	0.13
		11830.00	89.88	179.71	250.0	-4866.69	2295.22	6792.05	2035.05	5248.72	95.00	0.53	0.14	0.52
		11924.00	89.42	178.52	250.0	-4960.67	2296.67	6792.62	2035.62	5340.79	94.00	1.36	-0.49	-1.27
		12019.00	89.54	178.97	252.7	-5055.64	2298.75	6793.49	2036.49	5433.95	95.00	0.49	0.13	0.47
		12113.00	89.97	179.83	252.7	-5149.64	2299.74	6793.89	2036.89	5525.92	94.00	1.02	0.46	0.91
		12207.00	89.88	179.61	252.7	-5243.64	2300.20	6794.01	2037.01	5617.78	94.00	0.25	-0.10	-0.23
		12302.00	89.72	178.80	255.4	-5338.62	2301.52	6794.34	2037.34	5710.79	95.00	0.87	-0.17	-0.85
		12397.00	89.66	179.55	255.4	-5433.61	2302.88	6794.86	2037.86	5803.81	95.00	0.79	-0.06	0.79
		12491.00	89.78	179.59	255.4	-5527.61	2303.59	6795.32	2038.32	5895.72	94.00	0.13	0.13	0.04
		12586.00	89.97	179.00	258.1	-5622.60	2304.76	6795.52	2038.52	5988.70	95.00	0.65	0.20	-0.62
		12681.00	89.85	178.97	258.1	-5717.59	2306.44	6795.67	2038.67	6081.79	95.00	0.13	-0.13	-0.03

	12775.00	89.88	179.10	260.8	-5811.57	2308.02	6795.89	2038.89	6173.88	94.00	0.14	0.03	0.14
	12869.00	89.51	178.37	258.1	-5905.55	2310.10	6796.40	2039.40	6266.07	94.00	0.87	-0.39	-0.78
	12964.00	90.43	180.60	260.8	-6000.54	2310.95	6796.45	2039.45	6358.98	95.00	2.54	0.97	2.35
	13059.00	89.48	178.65	260.8	-6095.53	2311.58	6796.52	2039.52	6451.85	95.00	2.28	-1.00	-2.05
	13154.00	89.08	178.04	260.8	-6190.48	2314.32	6797.71	2040.71	6545.13	95.00	0.77	-0.42	-0.64
	13248.00	89.02	179.33	263.5	-6284.44	2316.48	6799.27	2042.27	6637.32	94.00	1.37	-0.06	1.37
	13343.00	89.57	179.47	263.5	-6379.43	2317.47	6800.44	2043.44	6730.26	95.00	0.60	0.58	0.15
	13437.00	89.69	177.16	263.5	-6473.38	2320.23	6801.05	2044.05	6822.58	94.00	2.46	0.13	-2.46
	13532.00	90.18	180.04	260.8	-6568.34	2322.55	6801.16	2044.16	6915.78	95.00	3.08	0.52	3.03
	13627.00	91.23	179.79	263.5	-6663.33	2322.70	6799.99	2042.99	7008.54	95.00	1.14	1.11	-0.26
	13721.00	91.23	179.73	266.2	-6757.31	2323.09	6797.97	2040.97	7100.36	94.00	0.06	-0.00	-0.06
	13816.00	91.02	180.01	266.2	-6852.29	2323.31	6796.10	2039.10	7193.13	95.00	0.37	-0.22	0.29
	13910.00	90.15	179.49	266.2	-6946.28	2323.72	6795.14	2038.14	7284.97	94.00	1.08	-0.93	-0.55
	14005.00	90.25	179.99	255.4	-7041.28	2324.15	6794.81	2037.81	7377.80	95.00	0.54	0.11	0.53
	14099.00	90.55	179.17	260.8	-7135.28	2324.84	6794.16	2037.16	7469.71	94.00	0.93	0.32	-0.87
	14194.00	89.97	178.11	260.8	-7230.25	2327.09	6793.73	2036.73	7562.90	95.00	1.27	-0.61	-1.12
	14288.00	90.49	178.14	263.5	-7324.20	2330.17	6793.35	2036.35	7655.28	94.00	0.55	0.55	0.03
	14383.00	90.12	178.71	266.2	-7419.16	2332.78	6792.84	2035.84	7748.55	95.00	0.72	-0.39	0.60
	14478.00	90.00	178.01	266.2	-7514.12	2335.50	6792.74	2035.74	7841.84	95.00	0.75	-0.13	-0.74
	14572.00	90.09	178.13	266.2	-7608.06	2338.66	6792.67	2035.67	7934.23	94.00	0.16	0.10	0.13
	14667.00	89.85	178.08	269.0	-7703.01	2341.80	6792.72	2035.72	8027.60	95.00	0.26	-0.25	-0.05
	14761.00	89.72	177.63	269.0	-7796.95	2345.32	6793.07	2036.07	8120.06	94.00	0.50	-0.14	-0.48
	14856.00	89.97	179.04	269.0	-7891.90	2348.08	6793.33	2036.33	8213.36	95.00	1.51	0.26	1.48
	14951.00	90.03	178.89	269.0	-7986.89	2349.80	6793.33	2036.33	8306.45	95.00	0.17	0.06	-0.16
	15046.00	90.31	181.19	271.7	-8081.88	2349.73	6793.05	2036.05	8399.17	95.00	2.44	0.29	2.42
	15140.00	89.82	180.46	271.7	-8175.87	2348.38	6792.94	2035.94	8490.62	94.00	0.94	-0.52	-0.78
	15235.00	90.49	180.14	271.7	-8270.87	2347.88	6792.68	2035.68	8583.25	95.00	0.78	0.71	-0.34
	15329.00	90.25	180.44	274.4	-8364.86	2347.40	6792.08	2035.08	8674.91	94.00	0.41	-0.26	0.32
	15423.00	89.88	180.22	274.4	-8458.86	2346.86	6791.97	2034.97	8766.55	94.00	0.46	-0.39	-0.23
	15518.00	89.82	180.17	271.7	-8553.86	2346.54	6792.22	2035.22	8859.21	95.00	0.08	-0.06	-0.05
	15612.00	90.09	181.69	269.0	-8647.85	2345.01	6792.29	2035.29	8950.63	94.00	1.64	0.29	1.62
	15707.00	90.12	181.80	274.4	-8742.80	2342.12	6792.12	2035.12	9042.70	95.00	0.12	0.03	0.12
	15801.00	90.09	181.68	274.4	-8836.76	2339.27	6791.95	2034.95	9133.80	94.00	0.13	-0.03	-0.13
	15896.00	89.82	179.12	274.4	-8931.75	2338.60	6792.02	2035.02	9226.38	95.00	2.71	-0.28	-2.69
	15990.00	89.69	178.95	277.1	-9025.73	2340.19	6792.42	2035.42	9318.47	94.00	0.23	-0.14	-0.18
	16085.00	89.85	178.86	277.1	-9120.72	2342.00	6792.80	2035.80	9411.58	95.00	0.19	0.17	-0.09
	16179.00	89.88	178.76	277.1	-9214.70	2343.95	6793.02	2036.02	9503.75	94.00	0.11	0.03	-0.11
	16274.00	89.75	177.59	277.1	-9309.64	2346.98	6793.33	2036.33	9597.09	95.00	1.24	-0.14	-1.23
	16368.00	90.31	178.38	277.1	-9403.59	2350.28	6793.28	2036.28	9689.51	94.00	1.03	0.60	0.84
	16463.00	89.57	177.55	279.8	-9498.52	2353.66	6793.38	2036.38	9782.92	95.00	1.17	-0.78	-0.87
	16558.00	90.40	177.42	279.8	-9593.43	2357.83	6793.41	2036.41	9876.47	95.00	0.88	0.87	-0.14
	16652.00	90.22	178.45	279.8	-9687.37	2361.21	6792.90	2035.90	9968.91	94.00	1.11	-0.19	1.10
	16747.00	90.28	178.17	279.8	-9782.33	2364.02	6792.48	2035.48	10062.21	95.00	0.30	0.06	-0.29
	16842.00	90.12	178.01	279.8	-9877.27	2367.18	6792.15	2035.15	10155.58	95.00	0.24	-0.17	-0.17
	16936.00	89.38	176.96	279.8	-9971.18	2371.31	6792.56	2035.56	10248.15	94.00	1.37	-0.79	-1.12
	17031.00	90.15	177.70	279.8	-10066.07	2375.73	6792.95	2035.95	10341.74	95.00	1.12	0.81	0.78
	17126.00	90.12	177.74	279.8	-10161.00	2379.51	6792.73	2035.73	10435.23	95.00	0.05	-0.03	0.04
	17220.00	89.94	177.80	282.5	-10254.93	2383.17	6792.68	2035.68	10527.71	94.00	0.20	-0.19	0.06
	17315.00	89.94	177.20	282.5	-10349.84	2387.31	6792.78	2035.78	10621.26	95.00	0.63	-0.00	-0.63
	17410.00	89.97	177.07	282.5	-10444.72	2392.06	6792.85	2035.85	10714.91	95.00	0.14	0.03	-0.14
	17504.00	90.03	178.65	282.5	-10538.65	2395.57	6792.85	2035.85	10807.37	94.00	1.68	0.06	1.68
	17599.00	89.85	178.25	282.5	-10633.61	2398.14	6792.95	2035.95	10900.63	95.00	0.46	-0.19	-0.42
Projection	17637.00	89.85	178.25	N/A	-10671.60	2399.30	6793.05	2036.05	10937.96	38.00	0.00	0.01	-0.00