



**RADIAL
CEMENT BOND LOG
GR/CCL**

Company		SNOW CONSULTING	
Well		SNOWDEN # 1	
Field		WILDCAT	
County		MESA	State COLORADO
Location:		API # : 077-08440	Other Services
SEC		TWP	RGE
Permanent Datum		Elevation	
Log Measured From		G.L.	Ft Above PD
Drilling Measured From		K.B. D.F. G.L.	
Date	05-11-21		
Run Number	ONE		
Depth Driller	321 '		
Present Depth Driller	321 '		
Depth Logger	313 '		
Bottom Logged Interval	312 '		
Top Log Interval	SURFACE		
Fluid Level	FULL		
Type Fluid	WATER		
Max. Recorded Temp.	N/A		
Estimated Cement Top	SEE LOG		
Equipment Number	209		
Location	G.J		
Recorded By	PAGE	MCBROOM	
Witnessed By	MIR SNOW		
Borehole Record		Casing Record	
Run Number	Bit From To	Size	Weight From To

<<< Fold Here >>>

All interpretations are opinions based on inferences from electrical or other measurements and we cannot and do not guarantee the accuracy or correctness of any interpretation, and we shall not, except in the case of gross or willful negligence on our part, be liable or responsible for any loss, costs, damages, or expenses incurred or sustained by anyone resulting from any interpretation made by any of our officers, agents or employees. These interpretations are also subject to our general terms and conditions set out in our current Price Schedule.

WARRIOR 7.0 SOFTWARE - Comments

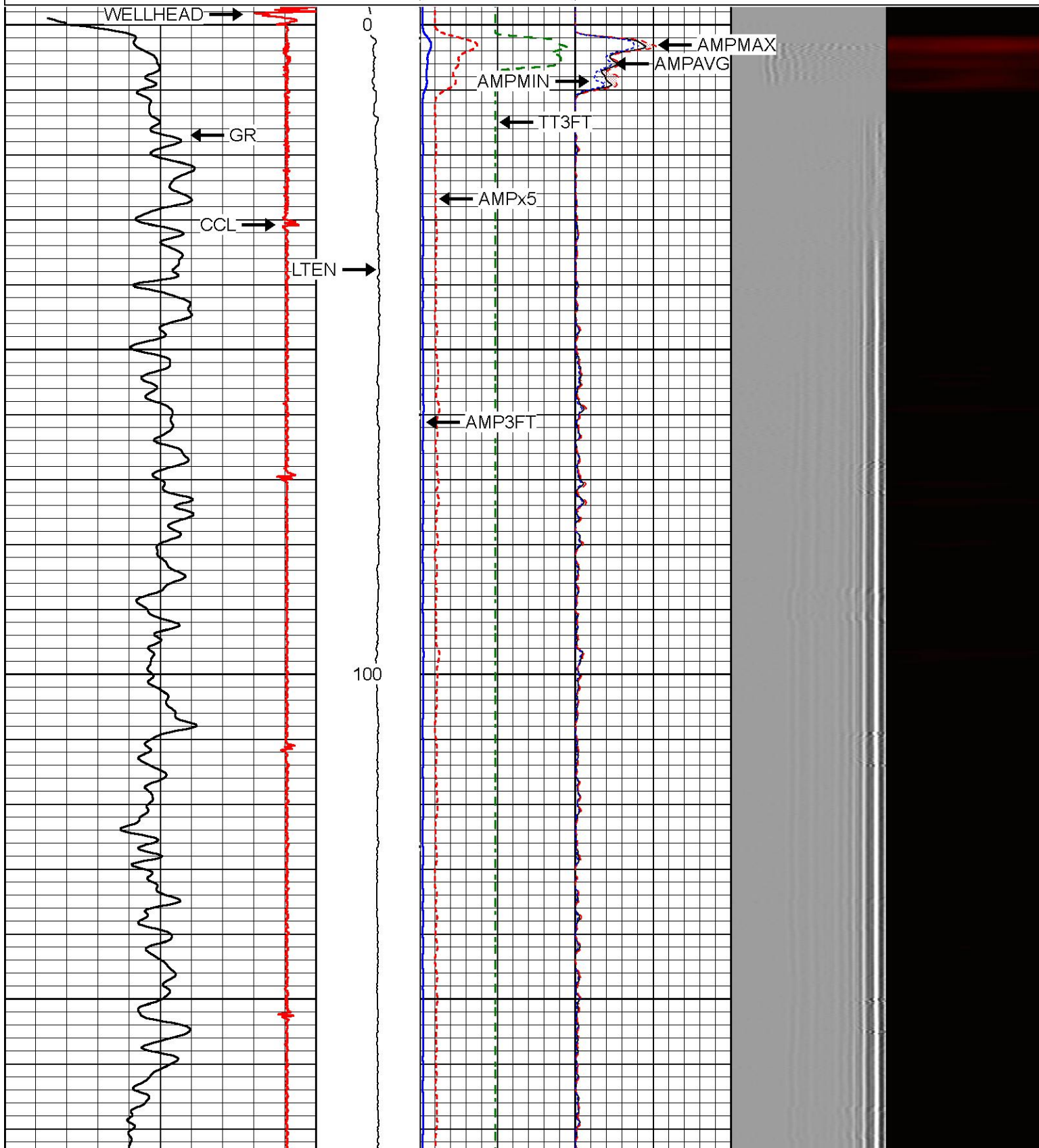
**NOTE: NO CORRELATION LOG TO TIE INTO.
MAIN PASS SCALE 5" = 100'
PASS 1 = STATIC PSI
PASS 2 = 600 PSI**

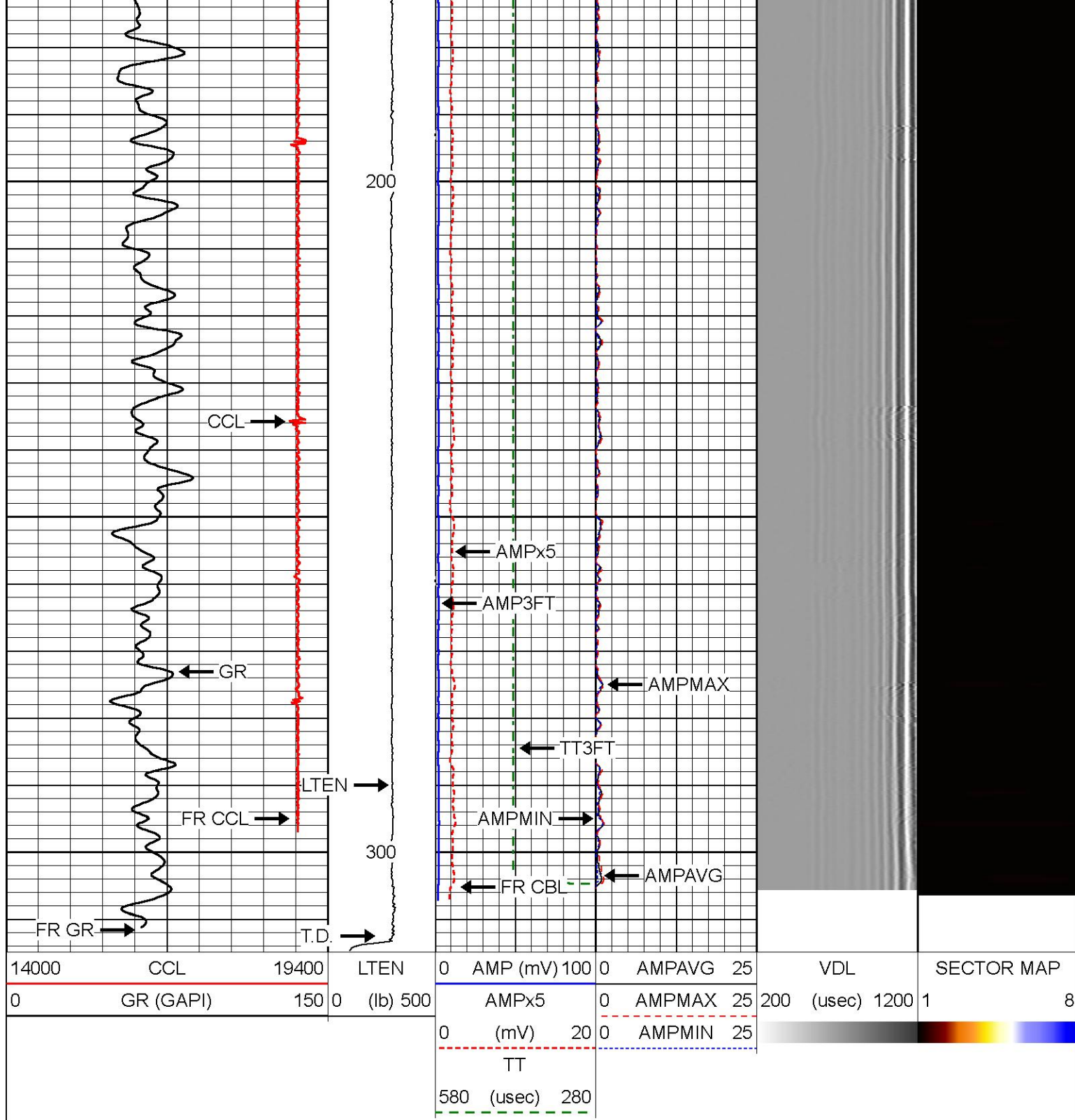


MAIN PASS STATIC RUN

Database File 051121_snowden#1.db
Dataset Pathname pass7
Presentation Format r_ax_cbl
Dataset Creation Tue May 11 11:07:08 2021
Charted by Depth in Feet scaled 1:240

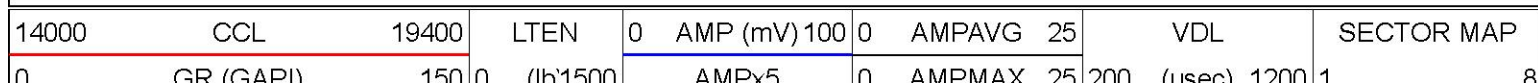
14000	CCL	19400	LTEN	0	AMP (mV) 100	0	AMPAVG	25	VDL	SECTOR MAP
0	GR (GAPI)	150	0	(lb) 500	AMPx5	0	AMPMAX	25	200 (usec) 1200	1 8
					0 (mV) 20	0	AMPMIN	25		
					TT					
					580 (usec) 280					

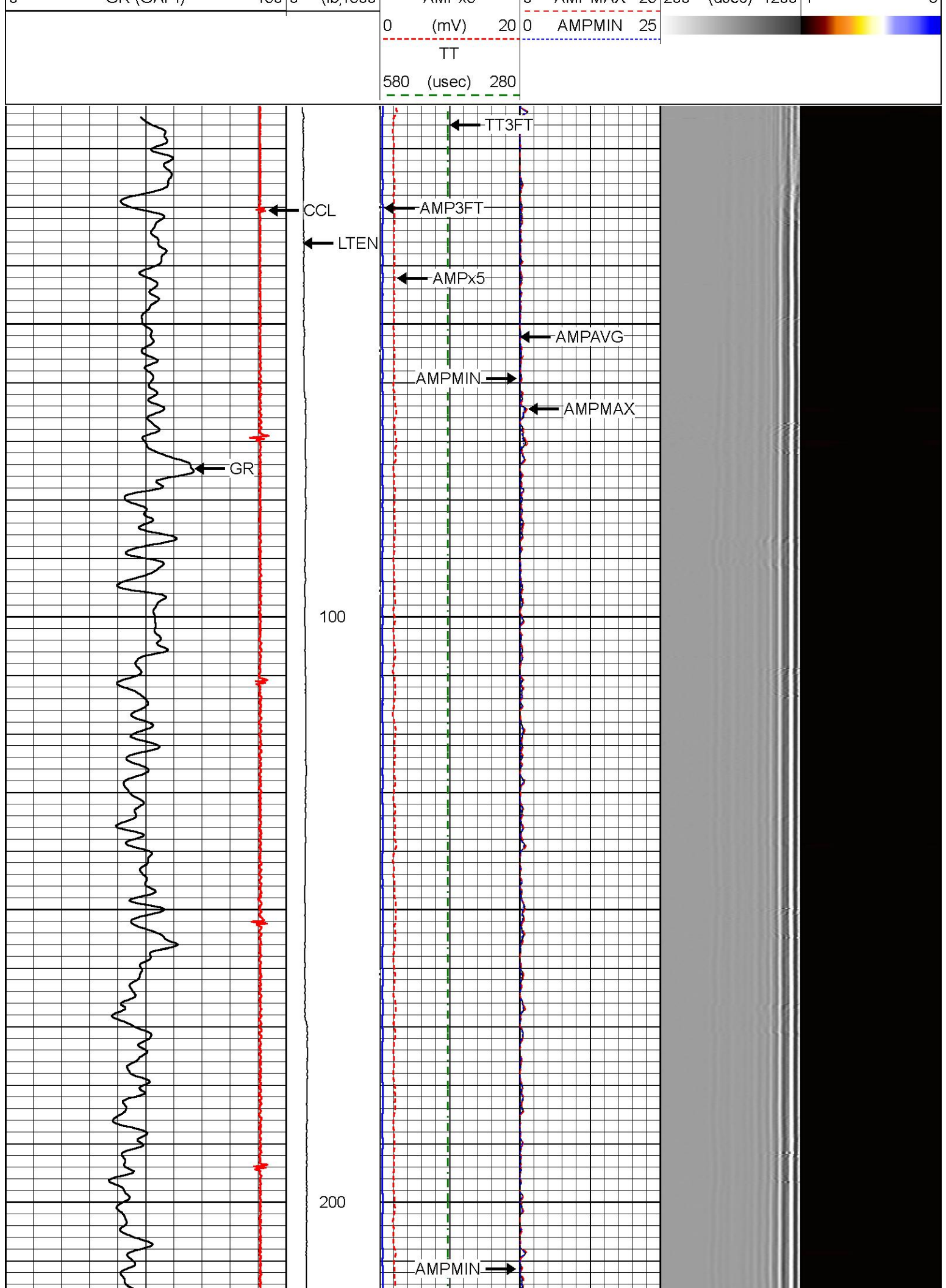


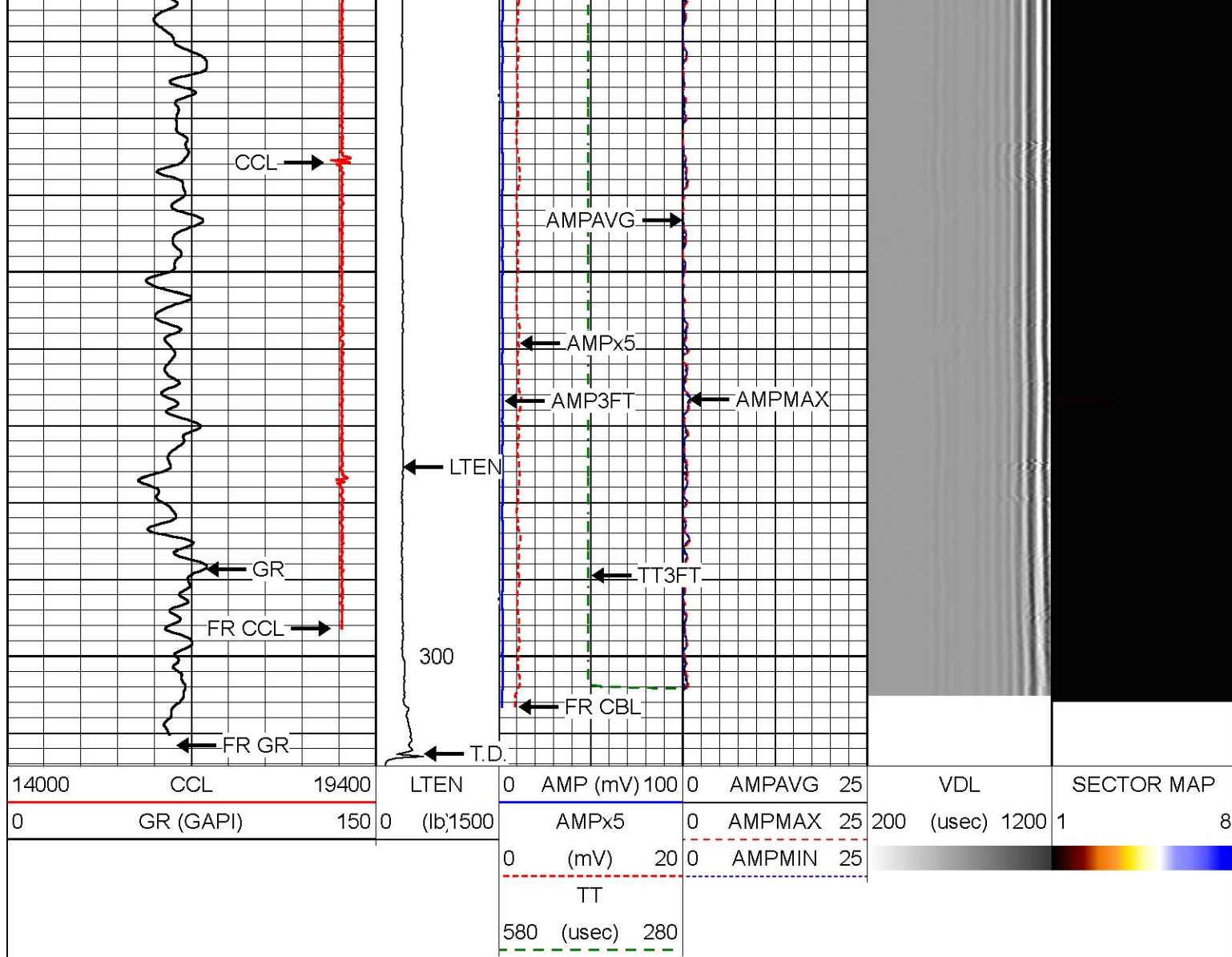


MAIN PASS 600 PSI

Database File 051121_snowden#1.db
 Dataset Pathname pass9
 Presentation Format r_ax_cbl
 Dataset Creation Tue May 11 11:37:34 2021
 Charted by Depth in Feet scaled 1:240







Log Variables

DatabaseC:\ProgramData\Warrior\Data\051121_snowden#1.db
 Dataset field/well/run1/pass7/_vars_

Top - Bottom

BOREID in 7.875	BOTTEMP degF 100	CASEOD in 7	CASETHCK in 0.272	CASEWGHT lb/ft 20	MAXAMPL mV 0	MINAMPL mV 1	MINATTN db/ft 0.8
PERFS No	PPT usec 0	SRFTEMP degF 0	TDEPTH ft 0				

Variable Description

BOREID : Borehole I.D.
 BOTTEMP : Bottom Hole Temperature
 CASEOD : Casing O.D.
 CASETHCK : Casing Thickness

CASEWGHT : Casing Weight
 MAXAMPL : Maximum Amplitude
 MINAMPL : Minimum Amplitude
 MINATTN : Minimum Attenuation

PERFS : Perforation Flag
 PPT : Predicted Pipe Time
 SRFTEMP : Surface Temperature
 TDEPTH : Total Depth

Calibration Report

Database File 051121_snowden#1.db
 Dataset Pathname pass7
 Dataset Creation Tue May 11 11:07:08 2021

Segmented Cement Bond Log Calibration Report

Serial Number: 10009897
 Tool Model: 004
 Calibration Casing Diameter: 5.500 in
 Calibration Depth: 0.000 ft

Master Calibration, performed Tue Oct 29 10:00:16 2019:

	Raw (v)		Calibrated (mv)		Results	
	Zero	Cal	Zero	Cal	Gain	Offset
3FT	-0.002	0.743	2.000	62.165	80.738	2.158
5FT	-0.004	0.318	2.000	62.165	187.148	2.685
S1	-0.002	0.755	0.000	100.000	132.026	0.322
S2	-0.003	0.736	0.000	100.000	135.395	0.372
S3	-0.003	0.675	0.000	100.000	147.566	0.452
S4	-0.002	0.660	0.000	100.000	150.868	0.368
S5	-0.002	0.688	0.000	100.000	144.745	0.351
S6	-0.003	0.744	0.000	100.000	133.897	0.380
S7	-0.002	0.788	0.000	100.000	126.517	0.308
S8	-0.002	0.786	0.000	100.000	126.833	0.293

Calibration Report

Serial Number: 10009897
 Tool Model: 004
 Performed:
 Reference (degF) Reading ()
 Low: 0.000 0.000
 High: 1.000 1.000
 Gain = 1.000 Offset = 0.000

Sensor	Offset (ft)	Schematic	Description	Length (ft)	O.D. (in)	Weight (lb)
CCL	17.63		CHD-AES (000001) Cable Head	1.04	1.69	2.00
			XTU-002 (10008325) Crossover Ultrawire Toolbus To Ultralink	1.58	1.69	6.50
			CCL-028 (1036) CCL UW 3 1/8" SONDEX	1.61	3.13	36.00
			PRC-AES-SDX-2 (1012) AES-SDX Adjustable Bowspring Centralizer with 19" sprgs	2.75	2.50	60.00

