

David Tewkesbury
Environmental Specialist
Crestone Peak Resources LLC
David.Tewkesbury@crestonepr.com

Quantitative Vegetation Survey Report

COGCC Location Name (ID)	GRENAMEYER-61N67W /26SESW (335620)
Operator Location Name	GRENAMEYER 24-26, 4-6-26 Well Pad
COGCC Operator Name (ID)	Crestone Peak Resources Operating LLC (10633)
Legal Description	SESW Sec. 26 T1N-R67W
Geographic Coordinates (WGS84)	40.01625/-104.85952

Mr. Tewkesbury,

Confluence Compliance Companies LLC (Confluence) is presenting this report to Crestone Peak Resources Operating LLC (Crestone) documenting the results of a Quantitative Vegetation Survey (QVS) completed on the above-referenced location. The QVS was conducted to evaluate vegetation cover and composition in the reclaimed surface of the location (Reclaimed Surface) and an equivalent reference area (Reference Area) to determine if vegetative cover requirements for final reclamation in Colorado Oil & Gas Conservation Commission (COGCC) Rule 1004.d have been met. Included with this Report is a review of methodologies used to evaluate the Reclaimed Surface, results of those evaluations, and recommendations for how to proceed with the information presented in this Report. Attached is a Summary of Field Data, Topographic Location Map, Reclamation Survey Site Diagram, Vegetation Assessment Photo Log, Relative Foliar Species Abundance Table, and Vegetation Survey results that illustrate QVS findings.

Methods

The survey methodology employed by Confluence is based on the step-point method described in an interagency technical reference published by the Bureau of Land Management (BLM, 1996). Prior to field evaluation, a desktop review of historical CPR and COGCC records, and an aerial imagery evaluation is performed to define and map all portions of the Reclaimed Surface and identify and map an equivalent Reference Area. Equivalent Reference Area(s) are selected to ensure that comparative assessments are conducted in areas not previously impacted by oil and gas operations or other surface disturbing processes, have similar slope and aspect to the Reclaimed Surface, and are reflective of pre-disturbance conditions for the referenced location to the extent feasible. When on-site, data from the desktop review is confirmed with observations of site conditions to confirm the preliminary transect locations chosen to characterize the Reclaimed Surface and Reference Area. Transect locations are selected to best represent the vegetative cover and species composition of the respective areas, and to limit subjectivity of field personnel.

A bullseye target tool is used to collect vegetation survey data at 50 survey points along each transect. Foliar and basal cover, along with non-vegetated and noxious weed occurrences, are documented at each survey point within the two Reclaim Transects and

two Reference Transects, for a total of 100 survey points in both areas. Transect data is documented in the Vegetation Survey – Field Data Tables. Photographs are collected throughout the QVS to document site conditions and depict transects. These photos are included in the Vegetation Assessment Photo Log. The Reclamation Survey Site Diagram illustrates Transect locations as well as photo collection points.

Noxious weeds listed by the Colorado Department of Agriculture are excluded from the percent of reference vegetative coverage calculations, per COGCC Rule 1004.d. To ensure reclamation vegetative composition meets the standards of CPR and the COGCC, undesirable cover is also quantified in the attached Summary of Field Data. Undesirable cover includes species identified by the United States Department of Agriculture (USDA) Natural Resource Conservation Service (NRCS) as introduced and not native to the lower 48 states, and not considered beneficial for reclamation purposes. All other vegetation not classified as noxious or undesirable, is identified by growth habit (grass, forb, shrub) and is considered desirable vegetative cover.

Results

The QVS was conducted on August 11, 2021, with the following findings:

- Reclaimed Surface Desirable Foliar Cover is 27.0%.
- Reference Area Desirable Foliar Cover is 7.0%.
- Vegetative foliar cover within the Reclaimed Surface is composed of 27.9% desirable species, 36.1% undesirable species, and 36.1% noxious List C species.
- Vegetative foliar cover within the Reference Area is composed of 7.4% desirable species, 38.9% undesirable species, and 53.7% noxious List C species.
- Reclaimed Surface desirable dominant species include Crested wheatgrass (*Agropyron cristatum*), Western Wheatgrass (*Pascopyrum smithii*), and Western tansymustard (*Descurainia pinnata*).

Based on these findings, the Reclaimed Surface has a desirable foliar vegetative cover that is 385.7% of the Reference Area.

Analysis and Recommendations

No reclamation maintenance is recommended for this location as undesirable and noxious weed species were under-represented on the Reclaimed Surface compared to the Reference Area. Foliar species abundance calculations indicate greater diversity and cover of desirable vegetation in the Reclaimed Surface than in the Reference. Based on the results of the survey, final reclamation as defined by COGCC rules has been achieved and vegetation cover has been established that reflects adjacent conditions with a total plant cover of at least 80% of the Reference Area. Submittal of a Form 4 (Sundry Notice) is recommended to document successful completion of final reclamation and notify the COGCC that the site is ready for a final reclamation inspection.



Confluence appreciates the opportunity to provide environmental consulting services on this project. If you have any questions about our methodology, the results of this assessment, or our conclusions, please let me know.

Respectfully,



Adam Roll
Project Scientist
970-589-6111 (M)
Adam.Roll@confluence-cc.com

Attachments

1. Quantitative Vegetation Survey – Summary of Field Data
2. Topographic Location Map
3. Reclamation Survey Site Diagram
4. Vegetation Assessment Photo Log
5. Quantitative Vegetation Survey – Relative Foliar Species Abundance Table
6. Quantitative Vegetation Survey – Field Data Tables

References

United States (U.S.) Department of Agriculture (USDA), Forest Service (USFS), Natural Resource Conservation Service (NRCS) and U.S. Department of the Interior (USDOI) Bureau of Land Management (BLM). "Sampling Vegetation Attributes, Interagency Technical Reference, 1996 (Revised in 1997, and 1999)". USDOI BLM Technical References #1734-4.



Quantitative Vegetation Survey - Summary of Field Data

Client	CRESTONE PEAK RESOURCES OPERATING, LLC (10633)
Operator Location Information	GRENEMEYER 24-26, 4-6-26 Well (Location ID: 335620)
Assessment Date	8/11/2021
Inspector Name	Adam Roll

Based on the survey methodology, the desirable foliar cover (%) in each survey area is calculated by summing the total number of foliar occurrences (#), excluding noxious weeds and undesirable species, and dividing by the total possible foliar occurrences in the transects (100). For this location:

Reclaim Area Vegetation

Desirable Foliar Cover = 27.0%

$$(25 + 2 + 0) / 100 = 0.27$$

Reference Area Vegetation

Desirable Foliar Cover = 7.0%

$$(0 + 7 + 0) / 100 = 0.07$$

For the purposes of this assessment, the undesirable foliar cover (%) in each survey is calculated by summing the total number of undesirable* foliar occurrences (#), excluding noxious weeds, and dividing by the total possible foliar occurrences in the transects (100). For this location:

Undesirable Foliar Cover = 35.0%

$$35 / 100 = 0.35$$

Undesirable Foliar Cover = 37.0%

$$37 / 100 = 0.37$$

The percent of reference used to evaluate the reclamation area for compliance with COGCC Rule 1003.e(2) is calculated by dividing the desirable foliar cover (%) in the reclaim area by the desirable foliar cover (%) in the reference area. For this location:

Percent of Reference = 385.7%

$$27\% / 7\% = 385.7\%$$

Reclaim Area Vegetation

Cover Type	#	%**
Desirable Foliar Cover	27	14%
Grass	25	13%
Forb	2	1%
Shrub	0	0%
Desirable Basal Cover	13	7%
Grass	13	7%
Forb	0	0%
Shrub	0	0%
Undesirable Cover	42	21%
Foliar	35	18%
Basal	7	4%
Non Vegetated	53	27%
Bare Ground	4	2%
Litter	49	25%
Rock	0	0%
Noxious Weeds Cover	65	33%
Foliar	35	18%
Basal	30	15%
Quality Assurance Total**	200	100%

Reference Area Vegetation

Cover Type	#	%**
Desirable Foliar Cover	7	4%
Grass	0	0%
Forb	7	4%
Shrub	0	0%
Desirable Basal Cover	1	1%
Grass	0	0%
Forb	1	1%
Shrub	0	0%
Undesirable Cover	45	23%
Foliar	37	19%
Basal	8	4%
Non Vegetated	58	29%
Bare Ground	1	1%
Litter	57	29%
Rock	0	0%
Noxious Weeds Cover	89	45%
Foliar	51	26%
Basal	38	19%
Quality Assurance Total**	200	100%

* Identified as introduced and non-native to the lower 48 states by the USDA NRCS, and not considered beneficial for reclamation purposes.

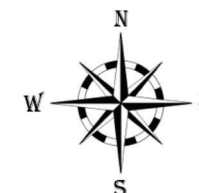
** % cover in the above cover detail tables represents Total Cover. For representation purposes, vegetative and non vegetated % Total Cover is rounded to the nearest whole number. The Quality Assurance Total is the summation of % cover with all applicable decimal numbers.

Topographic Location Map

CRESTONE PEAK RESOURCES
OPERATING, LLC (10633)

GRENEMEYER 24-26, 4-6-26 Wells
(GRENEMEYER-61N67W /26SESW)
COGCC Location ID: 335620

Weld County
SESW Sec. 26 T1N-R67W
Lat/Long.: 40.01625/-104.85952
Land Use: Non-Crop



Topographic map sourced from 2020 Earth Point using data provided by United States Geological Survey

Map created by Carolyn Craveiro on 10/09/2021.

GRENEMEYER 24-26, 4-6-26 Wells

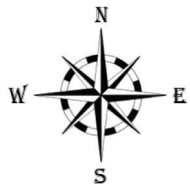


Reclamation Survey Site Diagram





CRESTONE PEAK RESOURCES OPERATING, LLC (10633)

GRENAMEYER 24-26, 4-6-26 Wells
(GRENAMEYER-61N67W /26SESW)
COGCC Location ID: 335620

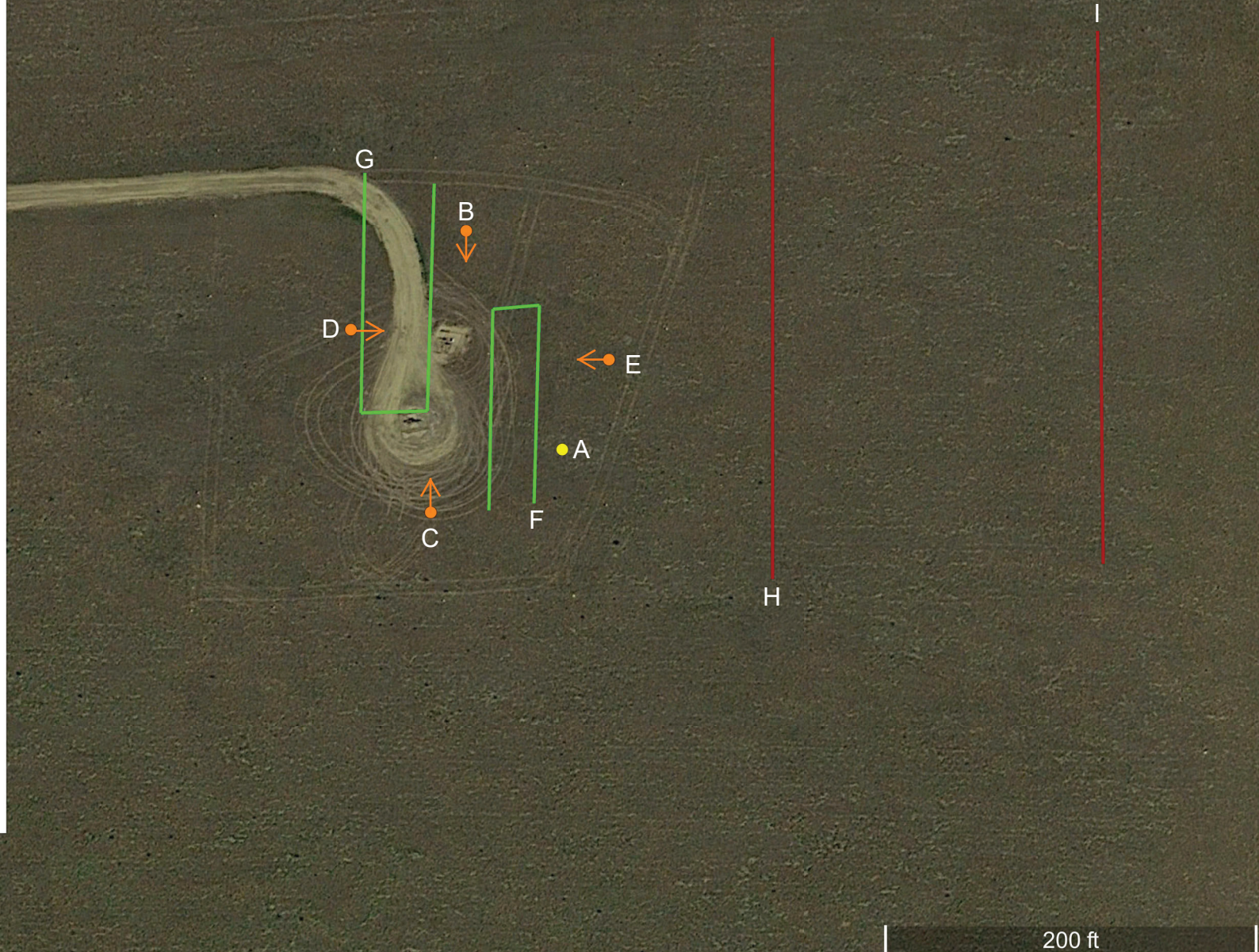
Weld County
SESW Sec. 26 T1N-R67W
Lat./Long.: 40.01625/-104.85952
Land Use: Non-Crop
Aerial Imagery Date: 05/31/2018



Legend

-  Directional Photo Point
-  Photo Point
-  Reference Transect
-  Reclaim Transect

Map created by Carolyn Craveiro on 10/09/2021.



Vegetation Assessment Photo Log

Date Completed - 08/11/2021

Client - Crestone Peak Resources Operating LLC

Location Name (ID) - GRENEMEYER 24-26, 4-6-26 Well (335620)

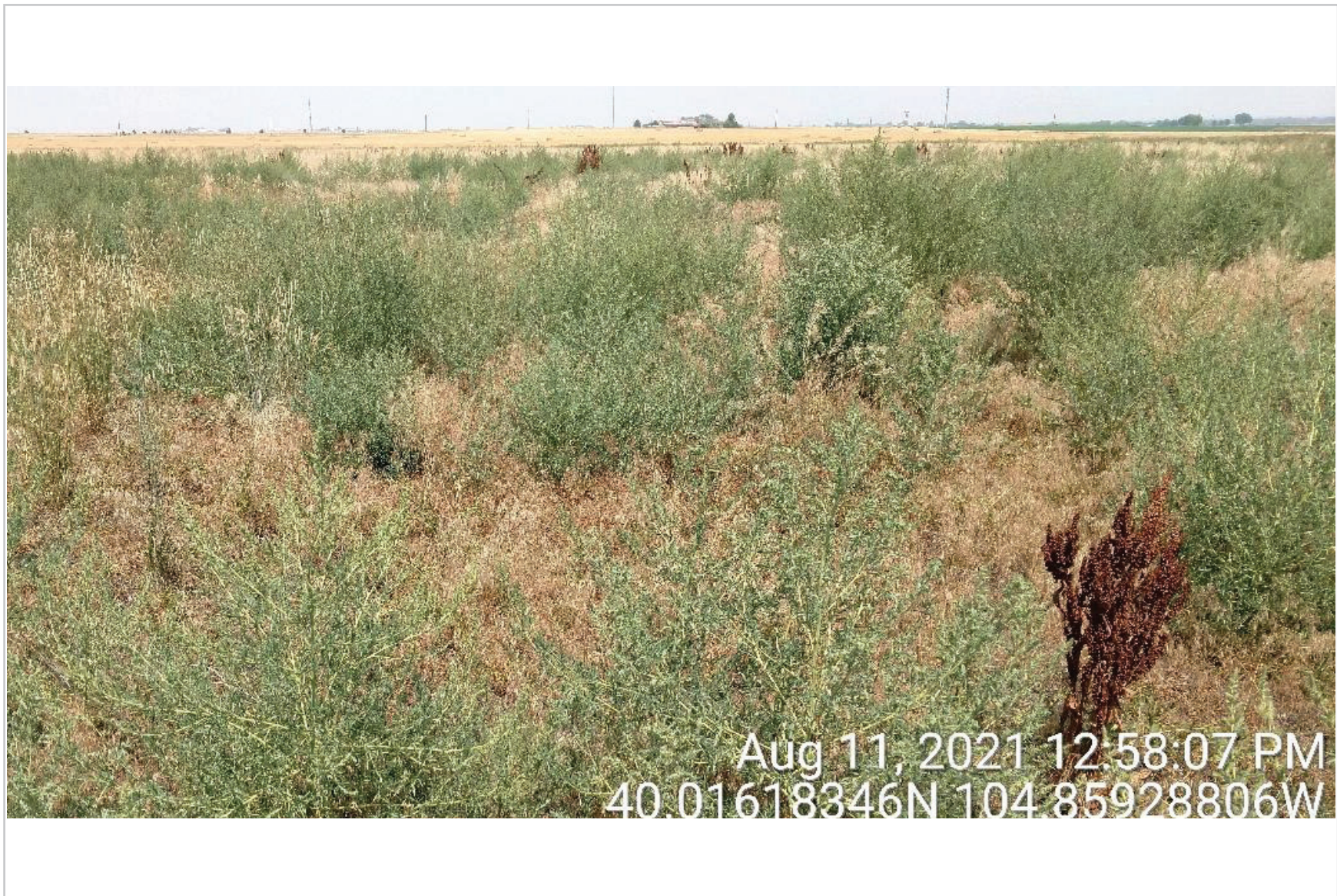


Photo Point A: Edge of Disturbance - Facing Northeast



Vegetation Assessment Photo Log

Date Completed - 08/11/2021

Client - Crestone Peak Resources Operating LLC

Location Name (ID) - GRENEMEYER 24-26, 4-6-26 Well (335620)



Directional Photo Point B: North of Disturbance - Facing South



Directional Photo Point C: South of Disturbance - Facing North



Directional Photo Point D: West of Disturbance - Facing East



Directional Photo Point E: East of Disturbance - Facing West



Vegetation Assessment Photo Log

Date Completed - 08/11/2021

Client - Crestone Peak Resources Operating LLC

Location Name (ID) - GRENEMEYER 24-26, 4-6-26 Well (335620)



Photo Point A: Reclamation Area - Facing Northeast





Photo Point F: Reclaim Transect 1 - Facing North



Photo Point G: Reclaim Transect 2 - Facing South

Vegetation Assessment Photo Log

Date Completed - 08/11/2021

Client - Crestone Peak Resources Operating LLC

Location Name (ID) - GRENEMEYER 24-26, 4-6-26 Well (335620)



Photo Point A: Reference Area - Facing East



Vegetation Assessment Photo Log

Client - Crestone Peak Resources Operating LLC

Date Completed - 08/11/2021

Location Name (ID) - GRENEMEYER 24-26, 4-6-26 Well (335620)



Photo Point H: Reference Transect 1 - Facing North



Photo Point I: Reference Transect 2 - Facing South



Client	CRESTONE PEAK RESOURCES OPERATING, LLC (10633)
Operator Location Information	GRENEMEYER 24-26, 4-6-26 Well (Location ID: 335620)
Assessment Date	8/11/2021
Inspector Name	Adam Roll

Relative Foliar Species Abundance

Relative foliar species abundance is calculated by dividing the total number of foliar occurrences (#) of an individual species by the total number of foliar occurrences (#) in the transect(s).

Species listed by transect area	#	%
Reclaim	97	100.0%
Forb	2	2.1%
Western tansymustard (<i>Descurainia pinnata</i>)	2	2.1%
Grass	25	25.8%
Crested wheatgrass (<i>Agropyron cristatum</i>)	20	20.6%
Western Wheatgrass (<i>Pascopyrum smithii</i>)	5	5.2%
Noxious List C	35	36.1%
Downy brome (<i>Bromus tectorum</i>)	28	28.9%
Field bindweed (<i>Convolvulus arvensis</i>)	7	7.2%
Undesirable	35	36.1%
Kochia (<i>Kochia scoparia</i>)	33	34.0%
Yellow salsify (<i>Tragopogon dubius</i>)	1	1.0%
Russian thistle (<i>Salsola tragus</i> L.)	1	1.0%
Reference	95	100.0%
Forb	7	7.4%
Western tansymustard (<i>Descurainia pinnata</i>)	6	6.3%
Buffalo bur (<i>Solanum rostratum</i>)	1	1.1%
Noxious List C	51	53.7%
Downy brome (<i>Bromus tectorum</i>)	34	35.8%
Field bindweed (<i>Convolvulus arvensis</i>)	17	17.9%
Undesirable	37	38.9%
Kochia (<i>Kochia scoparia</i>)	31	32.6%
Curly dock (<i>Rumex crispus</i>)	2	2.1%
Russian thistle (<i>Salsola tragus</i> L.)	2	2.1%
Prickly Lettuce (<i>Lactuca serriola</i>)	2	2.1%
Grand Total	192	

Client	CRESTONE PEAK RESOURCES OPERATING, LLC (10633)
Operator Location Information	GRENE MEYER 24-26, 4-6-26 Well (Location ID: 335620)
Assessment Date	8/11/2021
Inspector Name	Adam Roll
Transect Length	239 Feet

Reclaim Transect 1

Point #	Cover Type - Foliar	Species - Foliar	Cover Type - Basal	Species - Basal
1	Noxious List C	Downy brome (Bromus tectorum)	Non-Vegetated	Litter
2	Noxious List C	Downy brome (Bromus tectorum)	Non-Vegetated	Litter
3	Noxious List C	Field bindweed (Convolvulus arvensis)	Non-Vegetated	Litter
4	Noxious List C	Downy brome (Bromus tectorum)	Non-Vegetated	Litter
5	Undesirable	Kochia (Kochia scoparia)	Undesirable	Kochia (Kochia scoparia)
6	Grass	Crested wheatgrass (Agropyron cristatum)	Grass	Crested wheatgrass (Agropyron cristatum)
7	Noxious List C	Downy brome (Bromus tectorum)	Noxious List C	Downy brome (Bromus tectorum)
8	Grass	Crested wheatgrass (Agropyron cristatum)	Non-Vegetated	Litter
9	None	NA	Non-Vegetated	Litter
10	Grass	Crested wheatgrass (Agropyron cristatum)	Non-Vegetated	Bare Ground
11	Grass	Western Wheatgrass (Pascopyrum smithii)	Grass	Western Wheatgrass (Pascopyrum smithii)
12	Undesirable	Kochia (Kochia scoparia)	Noxious List C	Field bindweed (Convolvulus arvensis)
13	Undesirable	Kochia (Kochia scoparia)	Non-Vegetated	Litter
14	Noxious List C	Field bindweed (Convolvulus arvensis)	Non-Vegetated	Litter
15	Undesirable	Kochia (Kochia scoparia)	Grass	Crested wheatgrass (Agropyron cristatum)
16	Undesirable	Kochia (Kochia scoparia)	Undesirable	Kochia (Kochia scoparia)
17	Noxious List C	Field bindweed (Convolvulus arvensis)	Non-Vegetated	Litter
18	Grass	Crested wheatgrass (Agropyron cristatum)	Non-Vegetated	Litter
19	Undesirable	Yellow salsify (Tragopogon dubius)	Non-Vegetated	Litter
20	Undesirable	Kochia (Kochia scoparia)	Noxious List C	Downy brome (Bromus tectorum)
21	Undesirable	Kochia (Kochia scoparia)	Non-Vegetated	Litter
22	Noxious List C	Field bindweed (Convolvulus arvensis)	Noxious List C	Downy brome (Bromus tectorum)
23	Undesirable	Kochia (Kochia scoparia)	Noxious List C	Downy brome (Bromus tectorum)
24	Noxious List C	Downy brome (Bromus tectorum)	Non-Vegetated	Litter
25	Undesirable	Kochia (Kochia scoparia)	Noxious List C	Downy brome (Bromus tectorum)
26	Undesirable	Kochia (Kochia scoparia)	Non-Vegetated	Litter
27	Noxious List C	Downy brome (Bromus tectorum)	Non-Vegetated	Litter
28	Undesirable	Kochia (Kochia scoparia)	Noxious List C	Downy brome (Bromus tectorum)
29	Undesirable	Kochia (Kochia scoparia)	Non-Vegetated	Litter
30	Grass	Crested wheatgrass (Agropyron cristatum)	Non-Vegetated	Litter
31	Forb	Western tansymustard (Descurainia pinnata)	Grass	Crested wheatgrass (Agropyron cristatum)
32	Grass	Crested wheatgrass (Agropyron cristatum)	Non-Vegetated	Litter
33	Noxious List C	Downy brome (Bromus tectorum)	Noxious List C	Downy brome (Bromus tectorum)
34	Undesirable	Kochia (Kochia scoparia)	Non-Vegetated	Bare Ground
35	Undesirable	Kochia (Kochia scoparia)	Non-Vegetated	Litter
36	Undesirable	Kochia (Kochia scoparia)	Non-Vegetated	Litter
37	Undesirable	Kochia (Kochia scoparia)	Noxious List C	Downy brome (Bromus tectorum)
38	Grass	Western Wheatgrass (Pascopyrum smithii)	Grass	Western Wheatgrass (Pascopyrum smithii)
39	Undesirable	Kochia (Kochia scoparia)	Non-Vegetated	Litter
40	Undesirable	Kochia (Kochia scoparia)	Undesirable	Kochia (Kochia scoparia)
41	None	NA	Non-Vegetated	Litter
42	Undesirable	Kochia (Kochia scoparia)	Non-Vegetated	Litter
43	Noxious List C	Downy brome (Bromus tectorum)	Non-Vegetated	Litter
44	Undesirable	Kochia (Kochia scoparia)	Undesirable	Kochia (Kochia scoparia)
45	Noxious List C	Downy brome (Bromus tectorum)	Noxious List C	Downy brome (Bromus tectorum)
46	Grass	Crested wheatgrass (Agropyron cristatum)	Grass	Crested wheatgrass (Agropyron cristatum)
47	Undesirable	Kochia (Kochia scoparia)	Noxious List C	Downy brome (Bromus tectorum)
48	Undesirable	Kochia (Kochia scoparia)	Undesirable	Kochia (Kochia scoparia)
49	Noxious List C	Downy brome (Bromus tectorum)	Noxious List C	Downy brome (Bromus tectorum)
50	Grass	Western Wheatgrass (Pascopyrum smithii)	Non-Vegetated	Litter

Client CRESTONE PEAK RESOURCES OPERATING, LLC (10633)
Operator Location Information GRENEMEYER 24-26, 4-6-26 Well (Location ID: 335620)
Assessment Date 8/11/2021
Inspector Name Adam Roll
Transect Length 287 Feet

Reclaim Transect 2

Point #	Cover Type - Foliar	Species - Foliar	Cover Type - Basal	Species - Basal
1	None	NA	Non-Vegetated	Litter
2	Grass	Crested wheatgrass (<i>Agropyron cristatum</i>)	Noxious List C	Downy brome (<i>Bromus tectorum</i>)
3	Undesirable	Kochia (<i>Kochia scoparia</i>)	Grass	Crested wheatgrass (<i>Agropyron cristatum</i>)
4	Undesirable	Kochia (<i>Kochia scoparia</i>)	Undesirable	Kochia (<i>Kochia scoparia</i>)
5	Grass	Western Wheatgrass (<i>Pascopyrum smithii</i>)	Non-Vegetated	Litter
6	Noxious List C	Field bindweed (<i>Convolvulus arvensis</i>)	Non-Vegetated	Litter
7	Noxious List C	Field bindweed (<i>Convolvulus arvensis</i>)	Non-Vegetated	Litter
8	Undesirable	Kochia (<i>Kochia scoparia</i>)	Noxious List C	Downy brome (<i>Bromus tectorum</i>)
9	Grass	Crested wheatgrass (<i>Agropyron cristatum</i>)	Grass	Crested wheatgrass (<i>Agropyron cristatum</i>)
10	Noxious List C	Downy brome (<i>Bromus tectorum</i>)	Noxious List C	Downy brome (<i>Bromus tectorum</i>)
11	Grass	Crested wheatgrass (<i>Agropyron cristatum</i>)	Noxious List C	Downy brome (<i>Bromus tectorum</i>)
12	Undesirable	Kochia (<i>Kochia scoparia</i>)	Non-Vegetated	Litter
13	Grass	Crested wheatgrass (<i>Agropyron cristatum</i>)	Non-Vegetated	Litter
14	Grass	Western Wheatgrass (<i>Pascopyrum smithii</i>)	Grass	Western Wheatgrass (<i>Pascopyrum smithii</i>)
15	Noxious List C	Downy brome (<i>Bromus tectorum</i>)	Non-Vegetated	Litter
16	Grass	Crested wheatgrass (<i>Agropyron cristatum</i>)	Non-Vegetated	Litter
17	Noxious List C	Downy brome (<i>Bromus tectorum</i>)	Noxious List C	Downy brome (<i>Bromus tectorum</i>)
18	Noxious List C	Downy brome (<i>Bromus tectorum</i>)	Noxious List C	Downy brome (<i>Bromus tectorum</i>)
19	Grass	Crested wheatgrass (<i>Agropyron cristatum</i>)	Grass	Crested wheatgrass (<i>Agropyron cristatum</i>)
20	Noxious List C	Downy brome (<i>Bromus tectorum</i>)	Non-Vegetated	Litter
21	Noxious List C	Downy brome (<i>Bromus tectorum</i>)	Noxious List C	Downy brome (<i>Bromus tectorum</i>)
22	Grass	Crested wheatgrass (<i>Agropyron cristatum</i>)	Grass	Crested wheatgrass (<i>Agropyron cristatum</i>)
23	Grass	Crested wheatgrass (<i>Agropyron cristatum</i>)	Noxious List C	Downy brome (<i>Bromus tectorum</i>)
24	Noxious List C	Downy brome (<i>Bromus tectorum</i>)	Noxious List C	Downy brome (<i>Bromus tectorum</i>)
25	Noxious List C	Downy brome (<i>Bromus tectorum</i>)	Noxious List C	Downy brome (<i>Bromus tectorum</i>)
26	Noxious List C	Downy brome (<i>Bromus tectorum</i>)	Non-Vegetated	Litter
27	Noxious List C	Downy brome (<i>Bromus tectorum</i>)	Noxious List C	Downy brome (<i>Bromus tectorum</i>)
28	Grass	Crested wheatgrass (<i>Agropyron cristatum</i>)	Non-Vegetated	Litter
29	Grass	Crested wheatgrass (<i>Agropyron cristatum</i>)	Grass	Crested wheatgrass (<i>Agropyron cristatum</i>)
30	Noxious List C	Downy brome (<i>Bromus tectorum</i>)	Non-Vegetated	Litter
31	Noxious List C	Downy brome (<i>Bromus tectorum</i>)	Noxious List C	Downy brome (<i>Bromus tectorum</i>)
32	Grass	Crested wheatgrass (<i>Agropyron cristatum</i>)	Noxious List C	Downy brome (<i>Bromus tectorum</i>)
33	Noxious List C	Downy brome (<i>Bromus tectorum</i>)	Non-Vegetated	Litter
34	Undesirable	Kochia (<i>Kochia scoparia</i>)	Non-Vegetated	Litter
35	Forb	Western tansymustard (<i>Descurainia pinnata</i>)	Non-Vegetated	Bare Ground
36	Undesirable	Kochia (<i>Kochia scoparia</i>)	Non-Vegetated	Litter
37	Undesirable	Kochia (<i>Kochia scoparia</i>)	Non-Vegetated	Litter
38	Undesirable	Kochia (<i>Kochia scoparia</i>)	Non-Vegetated	Litter
39	Undesirable	Kochia (<i>Kochia scoparia</i>)	Non-Vegetated	Litter
40	Noxious List C	Downy brome (<i>Bromus tectorum</i>)	Undesirable	Kochia (<i>Kochia scoparia</i>)
41	Noxious List C	Downy brome (<i>Bromus tectorum</i>)	Noxious List C	Downy brome (<i>Bromus tectorum</i>)
42	Undesirable	Kochia (<i>Kochia scoparia</i>)	Noxious List C	Downy brome (<i>Bromus tectorum</i>)
43	Undesirable	Russian thistle (<i>Salsola tragus</i> L.)	Non-Vegetated	Litter
44	Undesirable	Kochia (<i>Kochia scoparia</i>)	Non-Vegetated	Litter
45	Noxious List C	Downy brome (<i>Bromus tectorum</i>)	Non-Vegetated	Bare Ground
46	Grass	Crested wheatgrass (<i>Agropyron cristatum</i>)	Grass	Crested wheatgrass (<i>Agropyron cristatum</i>)
47	Grass	Crested wheatgrass (<i>Agropyron cristatum</i>)	Noxious List C	Downy brome (<i>Bromus tectorum</i>)
48	Noxious List C	Downy brome (<i>Bromus tectorum</i>)	Noxious List C	Field bindweed (<i>Convolvulus arvensis</i>)
49	Noxious List C	Field bindweed (<i>Convolvulus arvensis</i>)	Non-Vegetated	Litter
50	Noxious List C	Downy brome (<i>Bromus tectorum</i>)	Noxious List C	Downy brome (<i>Bromus tectorum</i>)

Client CRESTONE PEAK RESOURCES OPERATING, LLC (10633)
Operator Location Information GRENEMEYER 24-26, 4-6-26 Well (Location ID: 335620)
Assessment Date 8/11/2021
Inspector Name Adam Roll
Transect Length 290 Feet

Reference Transect 1

Point #	Cover Type - Foliar	Species - Foliar	Cover Type - Basal	Species - Basal
1	Noxious List C	Field bindweed (Convolvulus arvensis)	Non-Vegetated	Litter
2	Noxious List C	Field bindweed (Convolvulus arvensis)	Non-Vegetated	Litter
3	Noxious List C	Field bindweed (Convolvulus arvensis)	Non-Vegetated	Litter
4	Undesirable	Kochia (Kochia scoparia)	Non-Vegetated	Litter
5	Undesirable	Kochia (Kochia scoparia)	Noxious List C	Field bindweed (Convolvulus arvensis)
6	Undesirable	Russian thistle (Salsola tragus L.)	Non-Vegetated	Litter
7	Undesirable	Kochia (Kochia scoparia)	Non-Vegetated	Litter
8	Undesirable	Kochia (Kochia scoparia)	Non-Vegetated	Litter
9	Undesirable	Kochia (Kochia scoparia)	Undesirable	Kochia (Kochia scoparia)
10	Noxious List C	Field bindweed (Convolvulus arvensis)	Non-Vegetated	Litter
11	Noxious List C	Field bindweed (Convolvulus arvensis)	Non-Vegetated	Litter
12	Undesirable	Kochia (Kochia scoparia)	Noxious List C	Downy brome (Bromus tectorum)
13	Undesirable	Kochia (Kochia scoparia)	Noxious List C	Downy brome (Bromus tectorum)
14	None	NA	Non-Vegetated	Litter
15	Undesirable	Kochia (Kochia scoparia)	Undesirable	Kochia (Kochia scoparia)
16	Undesirable	Kochia (Kochia scoparia)	Non-Vegetated	Litter
17	None	NA	Non-Vegetated	Litter
18	Undesirable	Curly dock (Rumex crispus)	Undesirable	Curly dock (Rumex crispus)
19	Undesirable	Kochia (Kochia scoparia)	Noxious List C	Field bindweed (Convolvulus arvensis)
20	Noxious List C	Field bindweed (Convolvulus arvensis)	Non-Vegetated	Litter
21	Noxious List C	Field bindweed (Convolvulus arvensis)	Non-Vegetated	Litter
22	Noxious List C	Downy brome (Bromus tectorum)	Non-Vegetated	Litter
23	Undesirable	Kochia (Kochia scoparia)	Noxious List C	Field bindweed (Convolvulus arvensis)
24	Undesirable	Kochia (Kochia scoparia)	Noxious List C	Downy brome (Bromus tectorum)
25	Forb	Western tansymustard (Descurainia pinnata)	Noxious List C	Downy brome (Bromus tectorum)
26	Noxious List C	Downy brome (Bromus tectorum)	Non-Vegetated	Litter
27	None	NA	Non-Vegetated	Litter
28	Noxious List C	Downy brome (Bromus tectorum)	Non-Vegetated	Litter
29	Noxious List C	Field bindweed (Convolvulus arvensis)	Non-Vegetated	Litter
30	Noxious List C	Field bindweed (Convolvulus arvensis)	Noxious List C	Downy brome (Bromus tectorum)
31	Noxious List C	Downy brome (Bromus tectorum)	Non-Vegetated	Litter
32	Noxious List C	Downy brome (Bromus tectorum)	Noxious List C	Downy brome (Bromus tectorum)
33	Undesirable	Prickly Lettuce (Lactuca serriola)	Noxious List C	Downy brome (Bromus tectorum)
34	None	NA	Non-Vegetated	Litter
35	Noxious List C	Downy brome (Bromus tectorum)	Noxious List C	Downy brome (Bromus tectorum)
36	Noxious List C	Downy brome (Bromus tectorum)	Noxious List C	Downy brome (Bromus tectorum)
37	Noxious List C	Downy brome (Bromus tectorum)	Noxious List C	Downy brome (Bromus tectorum)
38	Noxious List C	Field bindweed (Convolvulus arvensis)	Non-Vegetated	Litter
39	Noxious List C	Downy brome (Bromus tectorum)	Noxious List C	Downy brome (Bromus tectorum)
40	Noxious List C	Downy brome (Bromus tectorum)	Noxious List C	Downy brome (Bromus tectorum)
41	Noxious List C	Downy brome (Bromus tectorum)	Non-Vegetated	Litter
42	Noxious List C	Downy brome (Bromus tectorum)	Non-Vegetated	Litter
43	Noxious List C	Downy brome (Bromus tectorum)	Noxious List C	Downy brome (Bromus tectorum)
44	Noxious List C	Downy brome (Bromus tectorum)	Noxious List C	Downy brome (Bromus tectorum)
45	Forb	Western tansymustard (Descurainia pinnata)	Noxious List C	Downy brome (Bromus tectorum)
46	Noxious List C	Downy brome (Bromus tectorum)	Noxious List C	Downy brome (Bromus tectorum)
47	Noxious List C	Downy brome (Bromus tectorum)	Non-Vegetated	Litter
48	Noxious List C	Downy brome (Bromus tectorum)	Non-Vegetated	Litter
49	Noxious List C	Downy brome (Bromus tectorum)	Noxious List C	Downy brome (Bromus tectorum)
50	Noxious List C	Field bindweed (Convolvulus arvensis)	Non-Vegetated	Litter

Client CRESTONE PEAK RESOURCES OPERATING, LLC (10633)
Operator Location Information GRENEMEYER 24-26, 4-6-26 Well (Location ID: 335620)
Assessment Date 8/11/2021
Inspector Name Adam Roll
Transect Length 286 Feet

Reference Transect 2

Point #	Cover Type - Foliar	Species - Foliar	Cover Type - Basal	Species - Basal
1	Noxious List C	Field bindweed (Convolvulus arvensis)	Non-Vegetated	Litter
2	Noxious List C	Downy brome (Bromus tectorum)	Noxious List C	Field bindweed (Convolvulus arvensis)
3	Forb	Western tansymustard (Descurainia pinnata)	Noxious List C	Downy brome (Bromus tectorum)
4	Noxious List C	Downy brome (Bromus tectorum)	Noxious List C	Downy brome (Bromus tectorum)
5	Noxious List C	Downy brome (Bromus tectorum)	Non-Vegetated	Litter
6	Undesirable	Kochia (Kochia scoparia)	Noxious List C	Downy brome (Bromus tectorum)
7	Undesirable	Kochia (Kochia scoparia)	Non-Vegetated	Litter
8	Noxious List C	Downy brome (Bromus tectorum)	Noxious List C	Field bindweed (Convolvulus arvensis)
9	Forb	Buffalo bur (Solanum rostratum)	Non-Vegetated	Litter
10	Undesirable	Russian thistle (Salsola tragus L.)	Noxious List C	Downy brome (Bromus tectorum)
11	Noxious List C	Downy brome (Bromus tectorum)	Noxious List C	Downy brome (Bromus tectorum)
12	Noxious List C	Downy brome (Bromus tectorum)	Noxious List C	Downy brome (Bromus tectorum)
13	Noxious List C	Downy brome (Bromus tectorum)	Non-Vegetated	Litter
14	Noxious List C	Downy brome (Bromus tectorum)	Non-Vegetated	Litter
15	Noxious List C	Downy brome (Bromus tectorum)	Non-Vegetated	Litter
16	Noxious List C	Downy brome (Bromus tectorum)	Noxious List C	Downy brome (Bromus tectorum)
17	Noxious List C	Downy brome (Bromus tectorum)	Noxious List C	Field bindweed (Convolvulus arvensis)
18	Noxious List C	Downy brome (Bromus tectorum)	Non-Vegetated	Litter
19	Noxious List C	Downy brome (Bromus tectorum)	Non-Vegetated	Litter
20	Noxious List C	Field bindweed (Convolvulus arvensis)	Noxious List C	Downy brome (Bromus tectorum)
21	Noxious List C	Downy brome (Bromus tectorum)	Non-Vegetated	Litter
22	Undesirable	Kochia (Kochia scoparia)	Undesirable	Kochia (Kochia scoparia)
23	Noxious List C	Field bindweed (Convolvulus arvensis)	Non-Vegetated	Litter
24	Forb	Western tansymustard (Descurainia pinnata)	Noxious List C	Field bindweed (Convolvulus arvensis)
25	Forb	Western tansymustard (Descurainia pinnata)	Non-Vegetated	Litter
26	Noxious List C	Downy brome (Bromus tectorum)	Non-Vegetated	Litter
27	Noxious List C	Field bindweed (Convolvulus arvensis)	Non-Vegetated	Litter
28	Undesirable	Kochia (Kochia scoparia)	Non-Vegetated	Litter
29	Undesirable	Kochia (Kochia scoparia)	Non-Vegetated	Litter
30	Undesirable	Kochia (Kochia scoparia)	Noxious List C	Field bindweed (Convolvulus arvensis)
31	Noxious List C	Field bindweed (Convolvulus arvensis)	Forb	Western tansymustard (Descurainia pinnata)
32	Undesirable	Kochia (Kochia scoparia)	Non-Vegetated	Litter
33	Undesirable	Kochia (Kochia scoparia)	Non-Vegetated	Litter
34	Undesirable	Kochia (Kochia scoparia)	Noxious List C	Downy brome (Bromus tectorum)
35	Forb	Western tansymustard (Descurainia pinnata)	Non-Vegetated	Litter
36	Undesirable	Kochia (Kochia scoparia)	Undesirable	Kochia (Kochia scoparia)
37	Undesirable	Kochia (Kochia scoparia)	Noxious List C	Field bindweed (Convolvulus arvensis)
38	Undesirable	Kochia (Kochia scoparia)	Noxious List C	Downy brome (Bromus tectorum)
39	Undesirable	Prickly Lettuce (Lactuca serriola)	Non-Vegetated	Litter
40	Undesirable	Kochia (Kochia scoparia)	Noxious List C	Downy brome (Bromus tectorum)
41	Undesirable	Kochia (Kochia scoparia)	Non-Vegetated	Litter
42	None	NA	Non-Vegetated	Litter
43	Undesirable	Kochia (Kochia scoparia)	Noxious List C	Downy brome (Bromus tectorum)
44	Undesirable	Curly dock (Rumex crispus)	Non-Vegetated	Litter
45	Undesirable	Kochia (Kochia scoparia)	Undesirable	Kochia (Kochia scoparia)
46	Undesirable	Kochia (Kochia scoparia)	Undesirable	Kochia (Kochia scoparia)
47	Noxious List C	Field bindweed (Convolvulus arvensis)	Non-Vegetated	Litter
48	Undesirable	Kochia (Kochia scoparia)	Undesirable	Kochia (Kochia scoparia)
49	Noxious List C	Downy brome (Bromus tectorum)	Non-Vegetated	Litter
50	Undesirable	Kochia (Kochia scoparia)	Non-Vegetated	Bare Ground