

VERDAD RESOURCES

WATTENBERG FIELD

9N-59W-01 TIMBRO 0101 PAD

TIMBRO 0101-07H

Plan B

Plan: Design #1

Standard Planning Report

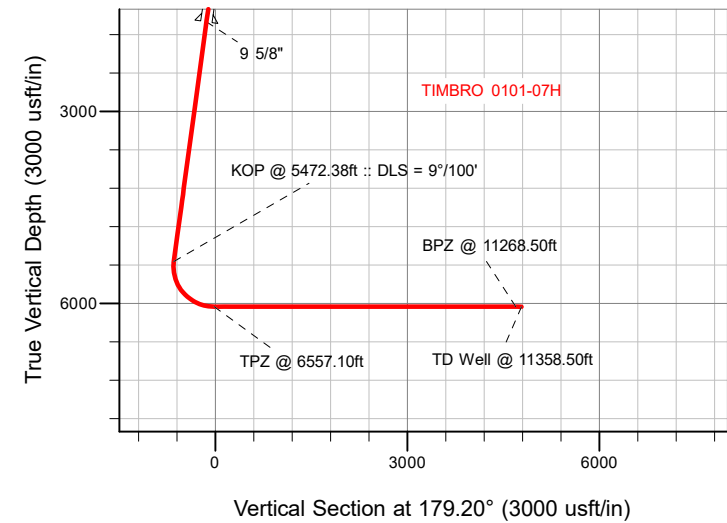
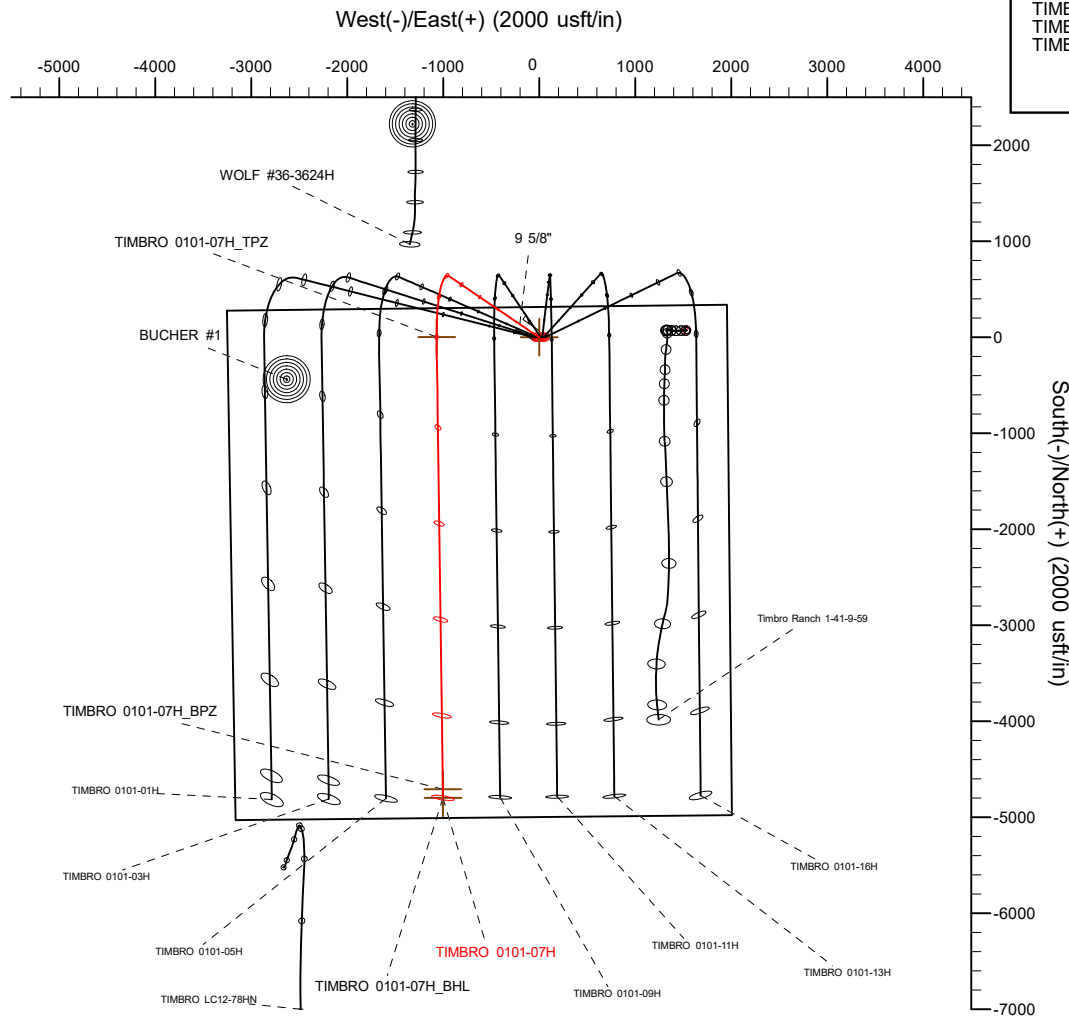
13 October, 2021


VERDAD RESOURCES

CASING DETAILS			
TVD	MD	Name	Size
1600.00	1625.37	9 5/8"	9-5/8

SECTION DETAILS									
MD	Inc	Azi	TVD	+N/-S	+E/-W	Dleg	TFace	VSec	Target
0.00	0.00	0.00	0.00	0.00	0.00	0.00	0.00	0.00	
247.20	0.00	0.00	247.20	0.00	0.00	0.00	0.00	0.00	
917.20	13.40	304.13	911.11	43.76	-64.56	2.00	304.13	-44.66	
5472.38	13.40	304.13	5342.28	636.06	-938.39	0.00	0.00	-649.10	
6557.10	90.00	179.20	6050.00	3.20	-1067.82	9.00	-124.19	-18.11	
11358.50	90.00	179.20	6050.00	-4797.74	-1000.94	0.00	0.00	4783.29	TIMBRO 0101-07H_BHL

WELLBORE TARGET DETAILS (LAT/LONG)					
Name	TVD	+N/-S	+E/-W	Latitude	Longitude
TIMBRO 0101-07H_SHL	0.00	0.00	0.00	40.786592	-103.924403
TIMBRO 0101-07H_BHL	6050.00	-4797.74	-1000.94	40.773424	-103.928017
TIMBRO 0101-07H_BPZ	6050.00	-4707.74	-1002.19	40.773671	-103.928021
TIMBRO 0101-07H_TPZ	6050.00	3.20	-1067.82	40.786601	-103.928259



 <p> M Azimuths to True North Magnetic North: 7.40° Magnetic Field Strength: 52203.4nT Dip Angle: 67.06° Date: 10/12/2021 Model: IGRF2020 </p>	WELL DETAILS: TIMBRO 0101-07H
	GL = 4937'
	RKB = 24' @ 4961.00usft (RIG)
	Plan: Design #1 (TIMBRO 0101-07H/Plan B)
	Date: 10/13/2021

Planning Report

Database:	EDM 5000.16 Single User Db	Local Co-ordinate Reference:	Well TIMBRO 0101-07H
Company:	VERDAD RESOURCES	TVD Reference:	RKB = 24' @ 4961.00usft (RIG)
Project:	WATTENBERG FIELD	MD Reference:	RKB = 24' @ 4961.00usft (RIG)
Site:	9N-59W-01 TIMBRO 0101 PAD	North Reference:	True
Well:	TIMBRO 0101-07H	Survey Calculation Method:	Minimum Curvature
Wellbore:	Plan B		
Design:	Design #1		

Project	WATTENBERG FIELD		
Map System:	US State Plane 1983	System Datum:	Mean Sea Level
Geo Datum:	North American Datum 1983		
Map Zone:	Colorado Northern Zone		

Site		9N-59W-01 TIMBRO 0101 PAD			
Site Position:		Northing:	1,533,230.40 usft	Latitude:	40.786474
From:	Lat/Long	Easting:	3,436,039.96 usft	Longitude:	-103.925326
Position Uncertainty:	0.00 usft	Slot Radius:	13-3/16 "		

Well		TIMBRO 0101-07H				
Well Position	+N/-S	0.00 usft	Northing:	1,533,278.00 usft	Latitude:	40.786592
	+E/-W	0.00 usft	Easting:	3,436,294.67 usft	Longitude:	-103.924403
Position Uncertainty		3.28 usft	Wellhead Elevation:	usft	Ground Level:	4,937.00 usft
Grid Convergence:		1.02 °				

Wellbore	Plan B				
Magnetics	Model Name	Sample Date	Declination (°)	Dip Angle (°)	Field Strength (nT)
	IGRF202013	10/12/2021	7.40	67.06	52,203.44156205

Design	Design #1				
Audit Notes:					
Version:		Phase:	PLAN	Tie On Depth:	0.00
Vertical Section:	Depth From (TVD) (usft)	+N/-S (usft)	+E/-W (usft)	Direction (°)	
	0.00	0.00	0.00	179.20	

Plan Survey Tool Program	Date	10/12/2021			
Depth From (usft)	Depth To (usft)	Survey (Wellbore)	Tool Name	Remarks	
1	0.00	1,600.00	Design #1 (Plan B)	ISCWSA MWD	
				Fixed:v2:standard declination	
2	1,600.00	11,358.50	Design #1 (Plan B)	ISCWSA MWD	
				Fixed:v2:standard declination	

Planning Report

Database:	EDM 5000.16 Single User Db	Local Co-ordinate Reference:	Well TIMBRO 0101-07H
Company:	VERDAD RESOURCES	TVD Reference:	RKB = 24' @ 4961.00usft (RIG)
Project:	WATTENBERG FIELD	MD Reference:	RKB = 24' @ 4961.00usft (RIG)
Site:	9N-59W-01 TIMBRO 0101 PAD	North Reference:	True
Well:	TIMBRO 0101-07H	Survey Calculation Method:	Minimum Curvature
Wellbore:	Plan B		
Design:	Design #1		

Plan Sections										
Measured Depth (usft)	Inclination (°)	Azimuth (°)	Vertical Depth (usft)	+N/-S (usft)	+E/-W (usft)	Dogleg Rate (°/100usft)	Build Rate (°/100usft)	Turn Rate (°/100usft)	TFO (°)	Target
0.00	0.00	0.00	0.00	0.00	0.00	0.00	0.00	0.00	0.00	
247.20	0.00	0.00	247.20	0.00	0.00	0.00	0.00	0.00	0.00	
917.20	13.40	304.13	911.11	43.76	-64.56	2.00	2.00	0.00	304.13	
5,472.38	13.40	304.13	5,342.28	636.06	-938.39	0.00	0.00	0.00	0.00	
6,557.10	90.00	179.20	6,050.00	3.20	-1,067.82	9.00	7.06	-11.52	-124.19	
11,358.51	90.00	179.20	6,050.00	-4,797.74	-1,000.94	0.00	0.00	0.00	0.00	TIMBRO 0101-07H_E

Planning Report

Database:	EDM 5000.16 Single User Db	Local Co-ordinate Reference:	Well TIMBRO 0101-07H
Company:	VERDAD RESOURCES	TVD Reference:	RKB = 24' @ 4961.00usft (RIG)
Project:	WATTENBERG FIELD	MD Reference:	RKB = 24' @ 4961.00usft (RIG)
Site:	9N-59W-01 TIMBRO 0101 PAD	North Reference:	True
Well:	TIMBRO 0101-07H	Survey Calculation Method:	Minimum Curvature
Wellbore:	Plan B		
Design:	Design #1		

Planned Survey									
Measured Depth (usft)	Inclination (°)	Azimuth (°)	Vertical Depth (usft)	+N/-S (usft)	+E/-W (usft)	Vertical Section (usft)	Dogleg Rate (°/100usft)	Build Rate (°/100usft)	Turn Rate (°/100usft)
0.00	0.00	0.00	0.00	0.00	0.00	0.00	0.00	0.00	0.00
100.00	0.00	0.00	100.00	0.00	0.00	0.00	0.00	0.00	0.00
200.00	0.00	0.00	200.00	0.00	0.00	0.00	0.00	0.00	0.00
247.20	0.00	0.00	247.20	0.00	0.00	0.00	0.00	0.00	0.00
Begin Nudge @ 247.20ft									
300.00	1.06	304.13	300.00	0.27	-0.40	-0.28	2.00	2.00	0.00
400.00	3.06	304.13	399.93	2.29	-3.37	-2.33	2.00	2.00	0.00
500.00	5.06	304.13	499.67	6.25	-9.23	-6.38	2.00	2.00	0.00
600.00	7.06	304.13	599.11	12.17	-17.96	-12.42	2.00	2.00	0.00
700.00	9.06	304.13	698.12	20.04	-29.56	-20.45	2.00	2.00	0.00
800.00	11.06	304.13	796.58	29.83	-44.01	-30.44	2.00	2.00	0.00
900.00	13.06	304.13	894.37	41.55	-61.30	-42.40	2.00	2.00	0.00
917.20	13.40	304.13	911.11	43.76	-64.56	-44.66	2.00	2.00	0.00
Hold Tangent @ 917.20ft									
1,000.00	13.40	304.13	991.65	54.53	-80.44	-55.64	0.00	0.00	0.00
1,100.00	13.40	304.13	1,088.93	67.53	-99.63	-68.91	0.00	0.00	0.00
1,200.00	13.40	304.13	1,186.21	80.53	-118.81	-82.18	0.00	0.00	0.00
1,300.00	13.40	304.13	1,283.49	93.53	-137.99	-95.45	0.00	0.00	0.00
1,400.00	13.40	304.13	1,380.77	106.54	-157.18	-108.72	0.00	0.00	0.00
1,500.00	13.40	304.13	1,478.04	119.54	-176.36	-121.99	0.00	0.00	0.00
1,600.00	13.40	304.13	1,575.32	132.54	-195.54	-135.26	0.00	0.00	0.00
1,625.37	13.40	304.13	1,600.00	135.84	-200.41	-138.63	0.00	0.00	0.00
9 5/8"									
1,700.00	13.40	304.13	1,672.60	145.54	-214.73	-148.53	0.00	0.00	0.00
1,800.00	13.40	304.13	1,769.88	158.55	-233.91	-161.80	0.00	0.00	0.00
1,900.00	13.40	304.13	1,867.15	171.55	-253.09	-175.07	0.00	0.00	0.00
2,000.00	13.40	304.13	1,964.43	184.55	-272.28	-188.34	0.00	0.00	0.00
2,100.00	13.40	304.13	2,061.71	197.56	-291.46	-201.61	0.00	0.00	0.00
2,200.00	13.40	304.13	2,158.99	210.56	-310.64	-214.87	0.00	0.00	0.00
2,300.00	13.40	304.13	2,256.26	223.56	-329.83	-228.14	0.00	0.00	0.00
2,400.00	13.40	304.13	2,353.54	236.56	-349.01	-241.41	0.00	0.00	0.00
2,500.00	13.40	304.13	2,450.82	249.57	-368.19	-254.68	0.00	0.00	0.00
2,600.00	13.40	304.13	2,548.10	262.57	-387.38	-267.95	0.00	0.00	0.00
2,700.00	13.40	304.13	2,645.37	275.57	-406.56	-281.22	0.00	0.00	0.00
2,800.00	13.40	304.13	2,742.65	288.57	-425.74	-294.49	0.00	0.00	0.00
2,900.00	13.40	304.13	2,839.93	301.58	-444.93	-307.76	0.00	0.00	0.00
3,000.00	13.40	304.13	2,937.21	314.58	-464.11	-321.03	0.00	0.00	0.00
3,100.00	13.40	304.13	3,034.48	327.58	-483.29	-334.30	0.00	0.00	0.00
3,200.00	13.40	304.13	3,131.76	340.59	-502.48	-347.57	0.00	0.00	0.00
3,300.00	13.40	304.13	3,229.04	353.59	-521.66	-360.84	0.00	0.00	0.00
3,400.00	13.40	304.13	3,326.32	366.59	-540.84	-374.11	0.00	0.00	0.00
3,500.00	13.40	304.13	3,423.59	379.59	-560.03	-387.38	0.00	0.00	0.00
3,600.00	13.40	304.13	3,520.87	392.60	-579.21	-400.65	0.00	0.00	0.00
3,700.00	13.40	304.13	3,618.15	405.60	-598.39	-413.91	0.00	0.00	0.00
3,800.00	13.40	304.13	3,715.43	418.60	-617.58	-427.18	0.00	0.00	0.00
3,900.00	13.40	304.13	3,812.70	431.60	-636.76	-440.45	0.00	0.00	0.00
4,000.00	13.40	304.13	3,909.98	444.61	-655.94	-453.72	0.00	0.00	0.00
4,100.00	13.40	304.13	4,007.26	457.61	-675.13	-466.99	0.00	0.00	0.00
4,200.00	13.40	304.13	4,104.54	470.61	-694.31	-480.26	0.00	0.00	0.00
4,300.00	13.40	304.13	4,201.82	483.62	-713.49	-493.53	0.00	0.00	0.00
4,400.00	13.40	304.13	4,299.09	496.62	-732.68	-506.80	0.00	0.00	0.00
4,500.00	13.40	304.13	4,396.37	509.62	-751.86	-520.07	0.00	0.00	0.00
4,600.00	13.40	304.13	4,493.65	522.62	-771.04	-533.34	0.00	0.00	0.00

Planning Report

Database:	EDM 5000.16 Single User Db	Local Co-ordinate Reference:	Well TIMBRO 0101-07H
Company:	VERDAD RESOURCES	TVD Reference:	RKB = 24' @ 4961.00usft (RIG)
Project:	WATTENBERG FIELD	MD Reference:	RKB = 24' @ 4961.00usft (RIG)
Site:	9N-59W-01 TIMBRO 0101 PAD	North Reference:	True
Well:	TIMBRO 0101-07H	Survey Calculation Method:	Minimum Curvature
Wellbore:	Plan B		
Design:	Design #1		

Planned Survey									
Measured Depth (usft)	Inclination (°)	Azimuth (°)	Vertical Depth (usft)	+N/-S (usft)	+E/-W (usft)	Vertical Section (usft)	Dogleg Rate (°/100usft)	Build Rate (°/100usft)	Turn Rate (°/100usft)
4,700.00	13.40	304.13	4,590.93	535.63	-790.23	-546.61	0.00	0.00	0.00
4,800.00	13.40	304.13	4,688.20	548.63	-809.41	-559.88	0.00	0.00	0.00
4,900.00	13.40	304.13	4,785.48	561.63	-828.59	-573.15	0.00	0.00	0.00
5,000.00	13.40	304.13	4,882.76	574.63	-847.78	-586.42	0.00	0.00	0.00
5,100.00	13.40	304.13	4,980.04	587.64	-866.96	-599.68	0.00	0.00	0.00
5,200.00	13.40	304.13	5,077.31	600.64	-886.14	-612.95	0.00	0.00	0.00
5,300.00	13.40	304.13	5,174.59	613.64	-905.33	-626.22	0.00	0.00	0.00
5,400.00	13.40	304.13	5,271.87	626.65	-924.51	-639.49	0.00	0.00	0.00
5,472.38	13.40	304.13	5,342.28	636.06	-938.39	-649.10	0.00	0.00	0.00
KOP @ 5472.38ft :: DLS = 9°/100'									
5,500.00	12.17	294.34	5,369.22	639.05	-943.70	-652.17	9.00	-4.44	-35.46
5,550.00	11.07	272.53	5,418.21	641.44	-953.30	-654.69	9.00	-2.21	-43.61
5,600.00	11.70	249.81	5,467.25	639.90	-962.86	-653.28	9.00	1.26	-45.45
5,650.00	13.83	231.73	5,516.04	634.45	-972.31	-647.96	9.00	4.26	-36.16
5,700.00	16.90	219.22	5,564.26	625.11	-981.60	-638.76	9.00	6.14	-25.01
5,750.00	20.49	210.72	5,611.62	611.95	-990.67	-625.73	9.00	7.18	-17.00
5,800.00	24.37	204.74	5,657.83	595.05	-999.46	-608.95	9.00	7.77	-11.95
5,850.00	28.43	200.35	5,702.61	574.51	-1,007.92	-588.53	9.00	8.11	-8.78
5,900.00	32.60	196.99	5,745.68	550.46	-1,016.00	-564.59	9.00	8.33	-6.72
5,950.00	36.83	194.32	5,786.78	523.05	-1,023.65	-537.29	9.00	8.47	-5.34
6,000.00	41.12	192.13	5,825.64	492.44	-1,030.81	-506.78	9.00	8.57	-4.37
6,050.00	45.44	190.29	5,862.04	458.82	-1,037.45	-473.26	9.00	8.64	-3.68
6,100.00	49.78	188.71	5,895.74	422.41	-1,043.53	-436.93	9.00	8.69	-3.17
6,150.00	54.15	187.32	5,926.54	383.42	-1,049.00	-398.03	9.00	8.73	-2.78
6,200.00	58.53	186.07	5,954.25	342.10	-1,053.84	-356.78	9.00	8.76	-2.49
6,250.00	62.92	184.93	5,978.70	298.70	-1,058.01	-313.44	9.00	8.78	-2.27
6,300.00	67.31	183.89	5,999.73	253.48	-1,061.49	-268.28	9.00	8.80	-2.10
6,350.00	71.72	182.90	6,017.22	206.74	-1,064.26	-221.58	9.00	8.81	-1.97
6,400.00	76.13	181.97	6,031.07	158.75	-1,066.29	-173.62	9.00	8.82	-1.87
6,450.00	80.54	181.07	6,041.17	109.81	-1,067.58	-124.71	9.00	8.83	-1.80
6,500.00	84.96	180.19	6,047.48	60.23	-1,068.13	-75.14	9.00	8.83	-1.75
6,550.00	89.37	179.32	6,049.96	10.30	-1,067.91	-25.21	9.00	8.83	-1.73
6,557.10	90.00	179.20	6,050.00	3.20	-1,067.82	-18.11	9.00	8.83	-1.73
TPZ @ 6557.10ft									
6,600.00	90.00	179.20	6,050.00	-39.69	-1,067.22	24.79	0.00	0.00	0.00
6,700.00	90.00	179.20	6,050.00	-139.68	-1,065.83	124.79	0.00	0.00	0.00
6,800.00	90.00	179.20	6,050.00	-239.67	-1,064.44	224.79	0.00	0.00	0.00
6,900.00	90.00	179.20	6,050.00	-339.66	-1,063.05	324.79	0.00	0.00	0.00
7,000.00	90.00	179.20	6,050.00	-439.65	-1,061.65	424.79	0.00	0.00	0.00
7,100.00	90.00	179.20	6,050.00	-539.64	-1,060.26	524.79	0.00	0.00	0.00
7,200.00	90.00	179.20	6,050.00	-639.63	-1,058.87	624.79	0.00	0.00	0.00
7,300.00	90.00	179.20	6,050.00	-739.63	-1,057.47	724.79	0.00	0.00	0.00
7,400.00	90.00	179.20	6,050.00	-839.62	-1,056.08	824.79	0.00	0.00	0.00
7,500.00	90.00	179.20	6,050.00	-939.61	-1,054.69	924.79	0.00	0.00	0.00
7,600.00	90.00	179.20	6,050.00	-1,039.60	-1,053.30	1,024.79	0.00	0.00	0.00
7,700.00	90.00	179.20	6,050.00	-1,139.59	-1,051.90	1,124.79	0.00	0.00	0.00
7,800.00	90.00	179.20	6,050.00	-1,239.58	-1,050.51	1,224.79	0.00	0.00	0.00
7,900.00	90.00	179.20	6,050.00	-1,339.57	-1,049.12	1,324.79	0.00	0.00	0.00
8,000.00	90.00	179.20	6,050.00	-1,439.56	-1,047.72	1,424.79	0.00	0.00	0.00
8,100.00	90.00	179.20	6,050.00	-1,539.55	-1,046.33	1,524.79	0.00	0.00	0.00
8,200.00	90.00	179.20	6,050.00	-1,639.54	-1,044.94	1,624.79	0.00	0.00	0.00
8,300.00	90.00	179.20	6,050.00	-1,739.53	-1,043.54	1,724.79	0.00	0.00	0.00
8,400.00	90.00	179.20	6,050.00	-1,839.52	-1,042.15	1,824.79	0.00	0.00	0.00
8,500.00	90.00	179.20	6,050.00	-1,939.51	-1,040.76	1,924.79	0.00	0.00	0.00

Planning Report

Database:	EDM 5000.16 Single User Db	Local Co-ordinate Reference:	Well TIMBRO 0101-07H
Company:	VERDAD RESOURCES	TVD Reference:	RKB = 24' @ 4961.00usft (RIG)
Project:	WATTENBERG FIELD	MD Reference:	RKB = 24' @ 4961.00usft (RIG)
Site:	9N-59W-01 TIMBRO 0101 PAD	North Reference:	True
Well:	TIMBRO 0101-07H	Survey Calculation Method:	Minimum Curvature
Wellbore:	Plan B		
Design:	Design #1		

Planned Survey										
Measured Depth (usft)	Inclination (°)	Azimuth (°)	Vertical Depth (usft)	+N/-S (usft)	+E/-W (usft)	Vertical Section (usft)	Dogleg Rate (°/100usft)	Build Rate (°/100usft)	Turn Rate (°/100usft)	
8,600.00	90.00	179.20	6,050.00	-2,039.50	-1,039.37	2,024.79	0.00	0.00	0.00	
8,700.00	90.00	179.20	6,050.00	-2,139.49	-1,037.97	2,124.79	0.00	0.00	0.00	
8,800.00	90.00	179.20	6,050.00	-2,239.48	-1,036.58	2,224.79	0.00	0.00	0.00	
8,900.00	90.00	179.20	6,050.00	-2,339.47	-1,035.19	2,324.79	0.00	0.00	0.00	
9,000.00	90.00	179.20	6,050.00	-2,439.46	-1,033.79	2,424.79	0.00	0.00	0.00	
9,100.00	90.00	179.20	6,050.00	-2,539.45	-1,032.40	2,524.79	0.00	0.00	0.00	
9,200.00	90.00	179.20	6,050.00	-2,639.44	-1,031.01	2,624.79	0.00	0.00	0.00	
9,300.00	90.00	179.20	6,050.00	-2,739.43	-1,029.61	2,724.79	0.00	0.00	0.00	
9,400.00	90.00	179.20	6,050.00	-2,839.42	-1,028.22	2,824.79	0.00	0.00	0.00	
9,500.00	90.00	179.20	6,050.00	-2,939.41	-1,026.83	2,924.79	0.00	0.00	0.00	
9,600.00	90.00	179.20	6,050.00	-3,039.40	-1,025.44	3,024.79	0.00	0.00	0.00	
9,700.00	90.00	179.20	6,050.00	-3,139.39	-1,024.04	3,124.79	0.00	0.00	0.00	
9,800.00	90.00	179.20	6,050.00	-3,239.38	-1,022.65	3,224.79	0.00	0.00	0.00	
9,900.00	90.00	179.20	6,050.00	-3,339.37	-1,021.26	3,324.79	0.00	0.00	0.00	
10,000.00	90.00	179.20	6,050.00	-3,439.36	-1,019.86	3,424.79	0.00	0.00	0.00	
10,100.00	90.00	179.20	6,050.00	-3,539.35	-1,018.47	3,524.79	0.00	0.00	0.00	
10,200.00	90.00	179.20	6,050.00	-3,639.34	-1,017.08	3,624.79	0.00	0.00	0.00	
10,300.00	90.00	179.20	6,050.00	-3,739.33	-1,015.69	3,724.79	0.00	0.00	0.00	
10,400.00	90.00	179.20	6,050.00	-3,839.32	-1,014.29	3,824.79	0.00	0.00	0.00	
10,500.00	90.00	179.20	6,050.00	-3,939.31	-1,012.90	3,924.79	0.00	0.00	0.00	
10,600.00	90.00	179.20	6,050.00	-4,039.31	-1,011.51	4,024.79	0.00	0.00	0.00	
10,700.00	90.00	179.20	6,050.00	-4,139.30	-1,010.11	4,124.79	0.00	0.00	0.00	
10,800.00	90.00	179.20	6,050.00	-4,239.29	-1,008.72	4,224.79	0.00	0.00	0.00	
10,900.00	90.00	179.20	6,050.00	-4,339.28	-1,007.33	4,324.79	0.00	0.00	0.00	
11,000.00	90.00	179.20	6,050.00	-4,439.27	-1,005.93	4,424.79	0.00	0.00	0.00	
11,100.00	90.00	179.20	6,050.00	-4,539.26	-1,004.54	4,524.79	0.00	0.00	0.00	
11,200.00	90.00	179.20	6,050.00	-4,639.25	-1,003.15	4,624.79	0.00	0.00	0.00	
11,268.50	90.00	179.20	6,050.00	-4,707.74	-1,002.19	4,693.29	0.00	0.00	0.00	
BPZ @ 11268.50ft										
11,300.00	90.00	179.20	6,050.00	-4,739.24	-1,001.76	4,724.79	0.00	0.00	0.00	
11,358.51	90.00	179.20	6,050.00	-4,797.74	-1,000.94	4,783.29	0.00	0.00	0.00	
TD Well @ 11358.50ft										

Casing Points					
Measured Depth (usft)	Vertical Depth (usft)	Name		Casing Diameter (")	Hole Diameter (")
1,625.37	1,600.00	9 5/8"		9-5/8	13-1/2

Plan Annotations					
Measured Depth (usft)	Vertical Depth (usft)	Local Coordinates		Comment	
247.20	247.20	0.00	0.00	Begin Nudge @ 247.20ft	
917.20	911.11	43.76	-64.56	Hold Tangent @ 917.20ft	
5,472.38	5,342.28	636.06	-938.39	KOP @ 5472.38ft :: DLS = 9°/100'	
6,557.10	6,050.00	3.20	-1,067.82	TPZ @ 6557.10ft	
11,268.50	6,050.00	-4,707.74	-1,002.19	BPZ @ 11268.50ft	
11,358.51	6,050.00	-4,797.74	-1,000.94	TD Well @ 11358.50ft	