

COUNTY	COMPANY	API Number
WELD (CO)	OXY USA INC	512321673
WELL NAME	RIG	JOB TYPE
WEST FARM 2-14A	SPN 711	CM-P2A-PERM.
SURFACE WELL LOCATION	CJES Field Supervisor	CUSTOMER REP
40.22795 -104.85471	Jeff Kopp	Ray Biship
EMPLOYEES		
Ryan P		
Garrick W		

WELL PROFILE

Max Treating Pressure (psi):	2000	Bottom Hole Static Temperature (°F):	
Bottom Hole Circulating Temperature (°F):		Well Type:	

Open Hole

1	Size (in)	TMD From (ft)	TMD to (ft)	TVD From (Ft)	TVD to (Ft)
	7.88	540	1800		
2	Size (in)	TMD From (ft)	TMD to (ft)	TVD From (Ft)	TVD to (Ft)

Casing/Tubing/Drill Pipe

Type	Size (in)	Weight (lb/ft)	Grade	TMD From (ft)	TMD to (ft)	TVD From (Ft)	TVD to (Ft)
Surface	8 5/8	24		0	540		
Production	4 1/2	11.6		0	1800		

CEMENT DATA

Stage 1:
 Type: **Squeeze**
 From Depth (ft): **1400** To Depth (ft): **1800**
 Volume (sacks): **145** Volume (bbls): **31.2**

Cement & Additives:	Density (ppg)	Yield (ft³/sk)	Water Req.
AGM	15.8	1.21	5.13

Stage 2:
 Type:
 From Depth (ft): To Depth (ft):
 Volume (sacks): Volume (bbls):

Cement & Additives:	Density (ppg)	Yield (ft³/sk)	Water Req.

Stage 3:
 Type:
 From Depth (ft): To Depth (ft):
 Volume (sacks): Volume (bbls):

Cement & Additives:	Density (ppg)	Yield (ft³/sk)	Water Req.

Stage 4:
 Type:
 From Depth (ft): To Depth (ft):
 Volume (sacks): Volume (bbls):

Cement & Additives:	Density (ppg)	Yield (ft³/sk)	Water Req.

SUMMARY

Preflushes:	5 bbls of Fresh Water	Calculated Displacement (bbl):	Stage 1	Stage 2
		Actual Displacement (bbl):	21.7	
Total Preflush/Spacer Volume (bbl):	5	Plug Bump (Y/N):	N/A	Bump Pressure (psi):
Total Slurry Volume (bbl):	31.2	Lost Returns (Y/N):	N	(if Y, when)
Total Fluid Pumped	36.2			
Returns to Surface:	Cement 0 bbls			

Job Notes (fluids pumped / procedures / tools / etc.): Filled lines and pressure tested to 3000psi. Est. circulation with 5bbls of fresh water then mixed and pumped 145sxs @15.8ppg 1.21y 5.13wr. Displaced 21.7bbls of fresh water for a TOC of 1400ft inside 4 1/2 casing.

Customer Representative Signature:

Ray Biship

Thank You For Using
 NextTier Completion Solutions

Cement Job Log



NexTier Completion Solutions
3990 Rogerdale Rd., Houston, TX 77042
(713)325-6000

Customer:	OXY USA INC	Date:	2-Jul-21	Serv. Supervisor:	Jeff Kopp		
Cust. Rep.:	Ray Bishop	Ticket #:	BCO-2107-0003	Serv. Center	Brighton - 3021		
Well Name:	WEST FARM 2-14A	API Well #:	512321673	County:	WELD (CO)	State:	COLORADO
Well Type:	Oil	Rig:	SPN 711	Type of Job:	CM-P2A-PERM.		

Materials Furnished by NexTier

[illegible]

Displacement Chemicals:

N/A

OPEN HOLE DATA

TUBULAR DATA

7.875 in. O.H. 540 to 1,800 ft			4.5 in. 11.6#, (0 to 1,800 ft)			SIZE WEIGHT	THRD	DEPTH	GRADE	ID	BURST	COLLAPSE
								(ft)		(in)	(psi)	(psi)
Ambient Tmp.	Bulk Tmp.	Slurry 1 Tmp.	Slurry 2 Tmp.	Slurry 3 Tmp.	Slurry 4 Tmp.	N/A		N/A	N/A	N/A	N/A	N/A
70.0 °F	70.0 °F	89.0 °F	N/A	N/A	N/A	N/A		N/A	N/A	N/A	N/A	N/A

PREVIOUS CASING DATA

PERFORATED INTERVAL DATA

CASING EQUIPMENT DEPTHS

8.625 in. 24# (0 to 540 ft)	TOP	BTM	SPF	SIZE	SHOE	FLOAT	STAGE	ACP
	N/A	1800	N/A	N/A	N/A	N/A	N/A	N/A
	N/A	N/A	N/A	N/A				

WELL FLUID

DISPLACEMENT FLUID

DIFF PRESS

3 LIFT

MAX PRESS

	Mix H2O
--	---------

--	--

NO	WATER
----	-------

1

TYPE	DENSITY	VOLUME	TYPE	DENSITY	(psi)	(psi)	(psi)	Chlorides (ppm)	Mix H2O pH	Mix H2O Temp	WATER ON LOG (bbl)
JH20	8.3 ppg	21.7 bbl	H2O	8.3 ppg	N/A	N/A	2000	42	7	70.0 °F	85

Bumped Plug	Final Differential (psi)	Floats Held (Y/N)	PSI Left on Casing	Cement to Surface (bbl)	Top of Cement (ft)	Full Circ. During Job (Y/N)	Max Pump Pressure (psi)	Casing Rotation	Additional Hrs Charged (hrs)	Casing Reciprocation	Rathole Length (ft)
					1,400	Yes	2,000.00				

Comments/Additional Details:

Jeff Kopp
Service Supervisor

Service Supervisor

2-Jul-21

Date _____

NexTierYARD CALL
RTS DATE

Date

7/2/2021

Time

10:00:00 AM

DISTRICT

Brighton - 3021

CUSTOMER INFORMATION

Customer Name: OXY USA INC
Customer #: 1000679
AFE #:
Cust Rep on Loc: Ray Bishop
Cust Phone #: (970) 424-2402
Order Placed By: Ray Bishop
Phone #:
Proposed Job Amt: \$4,837.65

JOB INFORMATION

Ticket #: BCO-2107-0003
PO #:
Order Taken By: Cody Michel
Order Date: 7/2/2021
Head Count: 4
NexTier Acct. Manager:
NexTier Engineer:

WELL INFORMATION

API #: 512321673
Field Name: WATTENBERG
Well Name: WEST FARM 2-14A
Well Type: Old
Formation: JSND
Rig Contractor: SPN
Rig Name/Num.: SPN 711
Rig Phone:
County: WELD (CO)
State: COLORADO
Latitude: 40.22795
Longitude: -105
NexTier Rep.
Section
Township-Range: SWNE 14 3N 67W
Quote Number: 3-BCO_210702083938

CASING DATA

Casing Size: 4.5
Casing Weight: 11.6#
Shoe Joint Length: 400 ft

Open Hole Data

TVD: 1,800 ft
MD: 1,800 ft
Size ID: 7.875
BHST: 112°F
BHCT: 89°F
°F / 100 or BHST: 1.8 °F/100ft
KOP: 0 ft

Previous Casing Size

Casing Size: 8.625
Casing Depth: 540

ACTUAL TABULAR DATA

Size	Grade	Weight	Mea.Depth

Casing 4.5 in. 11.6#, (0 to 1,800 ft)

CEMENTING PLUG

Qty	Size	Type	Material

TOP CONNECTION

Size	Type	Thread

JOB TYPE

CM-P2A-PERM.

COMMENTS

SPECIAL JOB INSTRUCTIONS

100 lb Sugar
100 lb SAPP

DIRECTIONS TO WELL

CR 32 1/2 & CR 23, W 2/10, N 2/10, W Into

Emergency Contacts

Nearest Hospital:
Police Department:
Fire Department:

Phone Number:
Phone Number:
Phone Number:

Designated Emergency Vehicle:

Vehicle Location:

MSDS on Dash of Emergency Vehicle? (y/n):

Muster Area #1
Muster Area #2

Cell Phone Service on location? (y/n)
If not, nearest working phone

Iron Tracking

Iron Type	Taken Out			Returned		
	Taken By	Date Out	Time Out	Returned By	Date In	Time In

088 - REAR POD

Plug to Abandon

Job Data								
MD / TVD	1,800 ft / 1,800 ft	Casing	4.5 in. 11.6#, (0 to 1,800 ft)					
Est. BHST/BHCT	112°F / 89°F (API) (1.80°F/100ft)	Open Hole	7.875 in. O.H. (540 to 1,800 ft)					
Mud Weight & Type	8.3#, Water Based	Previous Casing	8.625 in. 24# (0 to 540 ft)					
Comment	Squeeze							
Calculations								
Stage	Length	OH ID / Tail ID	Pipe OD	Excess	CF/FT	Volume(cf)	Volume bbl	
Squeeze	400	7.875	4.500	50%	0.342	136.7	24.3	
Shoe Track	400	4.000			0.087	34.91	6.2	
5 bbl Fresh Water								
						Volume (bbl)	5.00	
Squeeze								
Holes @ 1800'								
	Concentration	Item Code	Description					
	100 %	NCM-914	CEMENT PORTLAND CLASS G NCM-914					
	4.0 %	NAC-101	ADDITIVE GYPSUM NAC-101					
	2.0 %	NAC-110	Calcium Chloride NAC-110					
	0.4 %	NFL-522	ADDITIVE FLUID LOSS GAS MIGR NFL-522					
Top Depth (ft)			1,400	Slurry Density (ppg)				15.80
Volume (sx)			145	Yield (cf/sx)				1.21
Excess (%)			50%	Water (gps)				5.13

Plug to Abandon**Services**

Item No.	Description	Qty	UoM	Unit Price	Discount	Gross	Net Total
50001303	BULK CEMENT DELIVERY (PER TON)	146	TON MILE	\$ 2.95	62.0%	\$ 430.70	\$ 163.67
50001312	BULK BLENDING SERVICE	159	FT3	\$ 3.27	62.0%	\$ 519.93	\$ 197.57
50001349	ACCUDAT RECORDING SYSTEM	1	JOB	\$ 1,437.48	62.0%	\$ 1,437.48	\$ 546.24
50001296	MILEAGE; DOT UNITS	40	MILE	\$ 7.32	62.0%	\$ 292.80	\$ 111.26
50001297	MILEAGE; NON-DOT UNITS	40	MILE	\$ 4.26	62.0%	\$ 170.40	\$ 64.75
50001336	DEPTH PUMPED; ADDITIONAL HOURS	1	HR	\$ 588.06	62.0%	\$ 588.06	\$ 223.46
50001494	BULK UNIT ADDITIONAL HOURS	1	UNTHRS	\$ 130.68	62.0%	\$ 130.68	\$ 49.66
50001293	SERVICE SUPERVISOR	1	HR	\$ 122.52	0.0%	\$ 122.52	\$ 122.52
50001294	EQUIPMENT OPERATOR	1	HR	\$ 122.00	0.0%	\$ 122.00	\$ 122.00
50001295	BULK EQUIPMENT OPERATOR	1	HR	\$ 125.00	0.0%	\$ 125.00	\$ 125.00

Products

Item No.	Description	Qty	UoM	Unit Price	Discount	Gross	Net Total
10004384	NCM-914 - CEMENT PORTLAND CLASS G NCM-914 (SK)	145	SK	\$ 38.20	62.0%	\$ 5,538.96	\$ 2,104.80
10004416	NAC-101 - ADDITIVE GYPSUM NAC-101 (LB)	546	LB	\$ 1.76	62.0%	\$ 960.96	\$ 365.16
10004356	NAC-110 - Calcium Chloride NAC-110 (LB)	273	LB	\$ 1.22	62.0%	\$ 333.06	\$ 126.56
10004432	NFL-522 - ADDITIVE FLUID LOSS GAS MIGR NFL-522 (LB)	55	LB	\$ 24.64	62.0%	\$ 1,355.20	\$ 514.98

Gross Price: \$ 12,127.75

Discounted Amount: \$ 7,290.10

Estimated Job Cost: \$ 4,837.65

If-Needed Items

Item No.	Description	Qty	UoM	Unit Price	Discount	Gross	Net Total
10004358	NFP-775L - ADDITIVE DEFOAMER ALPHA NFP-775L (GAL)	1	GAL	\$ 215.90	62.0%	\$ 215.90	\$ 82.04
10004379	NRT-215 - ADDITIVE SUGAR NRT-215 (LB)	1	LB	\$ 3.39	62.0%	\$ 3.39	\$ 1.29
10004389	NSP-890 - ADDITIVE DUST FLUSH NSP-890 (LB)	100	LB	\$ 13.82	62.0%	\$ 1,382.00	\$ 525.16

DATE	7/2/2021	DISPATCHED BY	Milo	COMP-	OXY
TRAILER #	920088	CO MAN	Ray	BCO-	
WELL:	Ray	MILAGE	30	Ready @	

Front Type	Blend 1	Sacks	Legacy CJ #	Cmt/Add	Loading	Units	LBS	CF
	Custom	0		(CUSTOM INSERT)				
	Cement						0	0.00
	Extender						0	0.00
TOTALS Blend 1							0.0	0.00
ML003 Subtotal							0.0	

Middle Type	Blend 2	Sacks	Legacy CJ #	Cmt/Add	Loading	Units	LBS	CF
	Custom	0		(CUSTOM INSERT)				
	Cement						0	0.00
	Extender						0	0.00
TOTALS Blend 2							0.0	0.00
ML003 Subtotal							0.0	

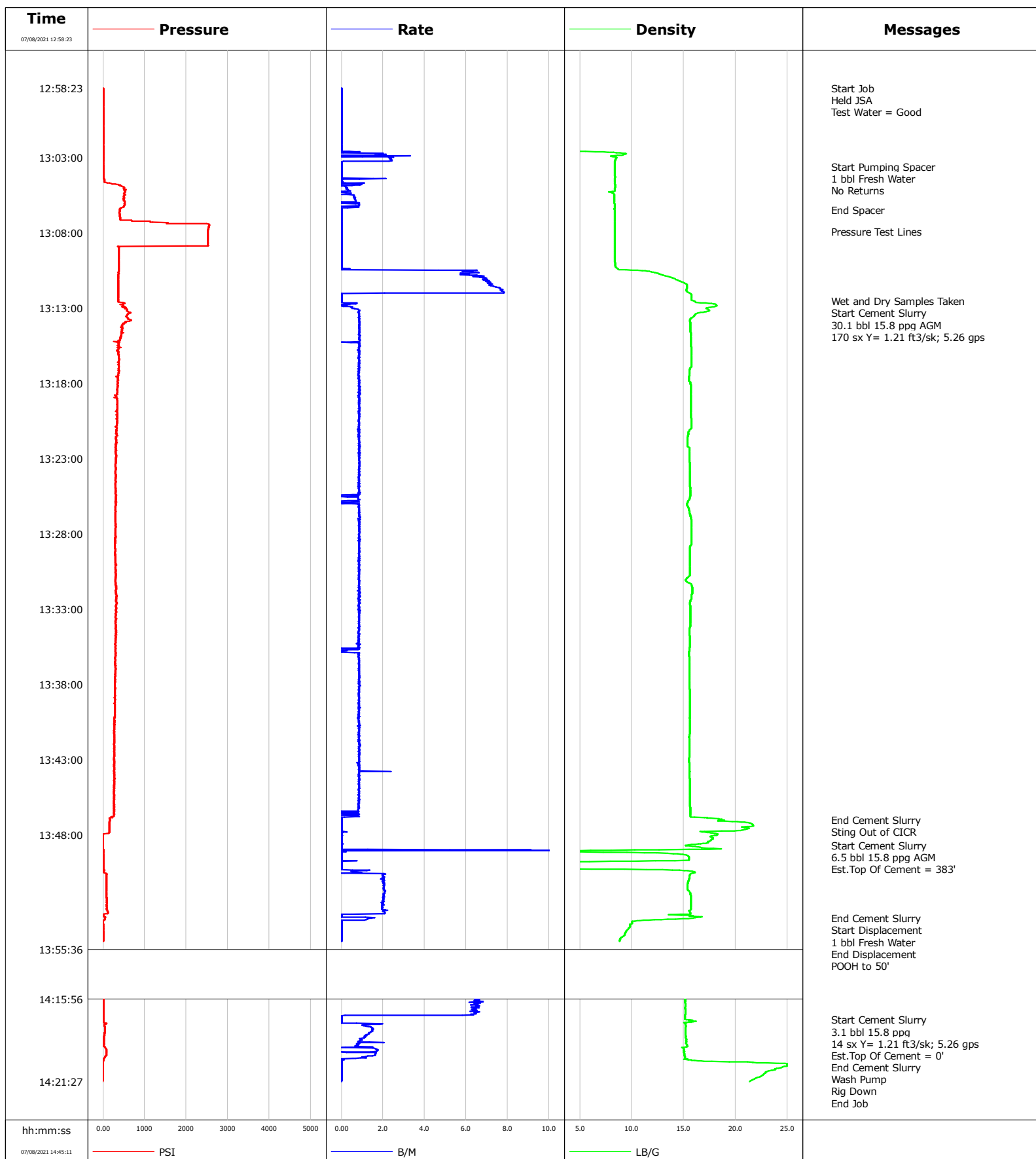
Back Type	Blend 3	Sacks	Legacy CJ #	Cmt/Add	Loading	Units	LBS	CF
	AGM 15.8ppg	145		(CUSTOM INSERT)				
	Cement	Class G Cement	CJ914	NCM-914	100	%	13630	145.00
	Extender	Poz Class F	CJ010-74	NPZ-010	0	%	0	0.00
		Gypsum	CJ101	NAC-101	4	%	545.20	6.40
		Calcium Chloride (CaCl2)	CJ110	NAC-110	2	%	272.60	5.40
		PVOH-RS 70S	CJ522R	NFL-522	0.4	%	54.52	1.09
TOTALS Blend 3							14502.3	157.89
ML003 Subtotal							217.5	

TOTAL PRODUCT WEIGHT

		14502.3
ML003	Bulk Cement Delivery/Return	217.5
MX001	Bulk Material Mixing Service Charge	157.89

Well West Farm
Field Wattenberg
Engineer Ken Sovereign
Country United States

Client Occidental
SIR No. EAJ7-02306
Job Type P A
Job Date 07-08-2021



				Customer Occidental		Job Number EAJ7-02306	
Well West Farm 2-14A		Location (legal)		Schlumberger Location Cheyenne Remedial		Job Start Jul/08/2021	
Field Wattenberg		Formation Name/Type		Deviation deg	Bit Size in	Well MD 590.0 ft	Well TVD 590.0 ft
County Weld		State/Province CO		BHP psi	BHST 90 degF	BHCT 80 degF	Pore Press. Gradient lb/gal
Well Master 64952244		API/UWI 05-123-21673					
Rig Name SPN 711	Drilled For Oil	Service Via Land	Casing/Liner				
			Depth, ft	Size, in	Weight, lb/ft	Grade	Thread
Offshore Zone	Well Class Old	Well Type Workover	530.0	8.6	24.0		
			0.0	0.0	0.0		
Drilling Fluid Type		Max. Density lb/gal	Plastic Viscosity cP	Tubing/Drill Pipe			
				T/D	Depth, ft	Size, in	Weight, lb/ft
Service Line Cementing	Job Type P & A			T	485.0	2.4	4.7
					0.0	0.0	0.0
Max. Allowed Tub. Press psi	Max. Allowed Ann. Press psi	WH Connection 2 3/8" 4.7# T/S	Perforations/Open Hole				
			Top, ft	Bottom, ft	shot/ft	No. of Shots	Total Interval ft
			ft	ft			
			ft	ft			Diameter in
			Treat Down Tubing	Displacement 1.0 bbl	Packer Type	Packer Depth ft	
			Tubing Vol. 1.9 bbl	Casing Vol. 33.8 bbl	Annular Vol. bbl	Openhole Vol. 3.6 bbl	
Casing/Tubing Secured <input checked="" type="checkbox"/>		1 Hole Vol. Circulated prior to Cement <input checked="" type="checkbox"/>		Casing Tools		Squeeze Job	
Lift Pressure psi				Shoe Type		Squeeze Type	
Pipe Rotated <input type="checkbox"/>		Pipe Reciprocated <input type="checkbox"/>		Shoe Depth ft		Tool Type	
No. Centralizers		Top Plugs	Bottom Plugs	Stage Tool Type		Tool Depth ft	
Cement Head Type			Stage Tool Depth ft		Tail Pipe Size in		
Job Scheduled For Jul/08/2021		Arrived on Location Jul/08/2021	Leave Location Jul/08/2021	Collar Type		Tail Pipe Depth ft	
				Collar Depth ft		Sqz. Total Vol. bbl	
Date	Time 24-hr clock	Treating Pressure PSI	Flow Rate B/M	Density LB/G	Volume BBL	Message	
07/08/2021	12:58:23	0	0.0	0.03	0.0	Started Acquisition	
07/08/2021	12:58:24	0	0.0	0.03	0.0	Start Job	
07/08/2021	12:58:25	0	0.0	0.03	0.0	Held JSA	
07/08/2021	13:03:23	0	0.0	8.35	1.1		
07/08/2021	13:03:37	0	0.0	8.36	1.1	Start Pumping Spacer	
07/08/2021	13:04:00	0	0.0	8.35	1.1	No Returns	
07/08/2021	13:06:29	403	0.0	8.35	2.0	End Spacer	
07/08/2021	13:07:56	2522	0.0	8.35	2.0	Pressure Test Lines	
07/08/2021	13:08:23	2518	0.0	8.35	2.0		
07/08/2021	13:12:32	362	0.0	15.97	12.8	Wet and Dry Samples Taken	
07/08/2021	13:13:23	650	0.8	16.29	13.2		
07/08/2021	13:18:23	348	0.9	15.68	17.4		
07/08/2021	13:23:23	298	0.9	15.58	21.7		
07/08/2021	13:28:23	284	0.9	15.74	25.8		
07/08/2021	13:33:23	307	0.8	15.63	30.0		
07/08/2021	13:38:23	275	0.9	15.58	34.1		
07/08/2021	13:43:23	261	0.9	15.55	38.3		
07/08/2021	13:46:59	156	0.0	18.62	41.1	End Cement Slurry	
07/08/2021	13:48:23	-5	0.0	17.61	41.1		
07/08/2021	13:48:42	-5	0.0	15.25	41.1	Start Cement Slurry	
07/08/2021	13:53:23	0	0.0	15.95	47.3		

Well			Field		Job Start	Customer	Job Number
West Farm 2-14A			Wattenberg		Jul/08/2021	Occidental	EAJ7-02306
Date	Time 24-hr clock	Treating Pressure PSI	Flow Rate B/M	Density LB/G	Volume BBL	Message	
07/08/2021	13:54:02	0	0.0	9.85	47.6	End Displacement	
07/08/2021	14:13:23	0	6.6	14.85	47.6		
07/08/2021	14:17:21	0	0.0	15.59	47.6	Start Cement Slurry	
07/08/2021	14:17:22	0	0.0	15.89	47.6	14 sx Y= 1.21 ft3/sk; 5.26 gps	
07/08/2021	14:18:23	32	1.2	15.19	48.8		
07/08/2021	14:20:11	-5	0.0	21.66	50.5	End Cement Slurry	
07/08/2021	14:21:00	-5	0.0	22.67	50.5	Wash Pump	
07/08/2021	14:23:23	-5	0.0	19.74	50.5		
07/08/2021	14:28:23	0	0.0	12.27	50.5		
07/08/2021	14:33:23	0	0.0	8.61	51.7		
07/08/2021	14:38:23	-87	0.0	3.83	58.4		

Post Job Summary

Average Pump Rates, bbl/min					Volume of Fluid Injected, bbl			
Slurry 1.7	N2	Mud	Maximum Rate 2.2	Total Slurry 39.7	Mud 0.0	Spacer 1.0	N2	
Treating Pressure Summary, psi					Breakdown Fluid			
Maximum 2554	Final 0	Average 311	Bump Plug to	Breakdown	Type	Volume bbl	Density lb/gal	
Avg. N2 Percent %	Designed Slurry Volume 39.7 bbl		Displacement 0.0 bbl	Mix Water Temp 82 degF	Cement Circulated to Surface? <input checked="" type="checkbox"/>	Volume bbl		
					Washed Thru Perfs <input type="checkbox"/>	To ft		
Customer or Authorized Representative Justin McMillan			Schlumberger Supervisor Ken Sovereign			Circulation Lost <input type="checkbox"/>	Job Completed <input checked="" type="checkbox"/>	
					-	-		