



Maanum Cementing Services LLC LLC  
600 17th Street, Ste 2800S  
Denver, Colorado 80202

## Field Ticket

Job Date: June 18, 2021  
Job Number: JOB00100694

### Bill To:

PDC Energy  
1775 Sherman Street  
Suite 3000  
Denver, Colorado  
80204

UWI: NW/NE Sec. 14, T7N, R66W

Surface: NW/NE Sec. 14, T7N, R66W

Pricing Area: Area 1  
Competitive: CHYN  
Depth: 7050  
Job Type: Well Abandonment

	Units	Per	Unit Price	Cost
<b>Services and Equipment</b>				
PCMP Unit Travel	40.	MI		
PCMP Add Time: Operating	4.	HR		
PCMP - Remedial Set Up (6 Hr min)	7,050.	FT		
Add Time: Non Operating	14.	HR		
Tax Recovery	1.	Job		
<b>Equipment</b>				
MDAC	1.	Job		
Communication Headsets	2.	RDIO		
<b>Material Handling &amp; Delivery</b>				
Bulk Material Blending	1,024.	SKS		
Bulk Material Delivery	40,960.	SKMI		
<b>Products &amp; Materials</b>				
MCA-1	217.5	LB		
MCA-1	53.51	LB		
MCI-2	48.5	LB		
MCFL-10	130.5	LB		
MCFL-10	64.21	LB		
MCFL-10	160.25	LB		
MCFL-7	258.69	LB		
MCFR-2	97.01	LB		
MCR-1	53.42	LB		
MCR-2	50.	LB		
MCR-H	80.84	LB		
MCDF-P	32.34	LB		
MCDF-L	8.	GAL		
MAG G 15.8	344.	SKS		
MAG S 14.1	250.	SKS		
MAG S 14.1	123.	SKS		
MAG S 14.1	307.	SKS		

### Customer Stamp:

SERVICES PROVIDED BY MAGNUM CEMENTING SERVICES  
LTD., ARE GOVERNED BY AND SUBJECT TO THE ATTACHED  
TERMS AND CONDITIONS

Received By: Ryan Beam 970-405-8585  
Comments:

# US Treatment Report



**Customer:** PDC Energy  
**Rep:** Ryan Beam  
**Supervisor:** Wesley Bell  
**Job Type:** US Remedial

**Rig:** Ensign 350  
**Well:** Fred Hoffner #1  
**UWI:** NW/NE Sec. 14, T7N,  
 R66W  
**Surface:** NW/NE Sec. 14, T7N,  
 R66W

**Job #:** JOB00100694  
**Job Date:** 6/18/2021  
**Time Requested:** 6/17/2021 18:00  
**Time Arrived:** 6/17/2021 17:00

Well Abandonment

**Time Released:** 2000

307 sk MAG S 14.1 + 0.60% MCFL-10 + 0.20% MCR-1

Yield: 1.28ft3/sack = 69.99bbls

Mix Water: 5.89gal/sack = 1808.23gal

123 sk MAG S 14.1 + 0.60% MCFL-10 + 0.50% MCA-1

Yield: 1.28ft3/sack = 28.04bbls

Mix Water: 5.89gal/sack = 724.47gal

250 sk MAG S 14.1 + 0.60% MCFL-10 + 1.00% MCA-1

Yield: 1.28ft3/sack = 56.99bbls

Mix Water: 5.89gal/sack = 1472.5gal

BHCT (F)	234	BHST (F)	234	Tubing Casing Size (in)	2.875
Tubing Grade	P110	Tubing Weight (lb/ft)	7.9	Tubing Casing Size (in)	2.875
Tubing Weight (lb/ft)	7.9	Hole Size (in)	12	Max Pressure (psi)	1500
Mud Type	WBM	TMD (ft)	7050	Tubing (in)	2.875
Tubing Grade	P110	Tubing Length (ft)	7050	Tubing WT (lb/ft)	7.9
TVD (ft)	7050	Unkown UDF	Tubing	Unkown UDF	Tubing

Treatment Info: Sacks Used: 1024 Sacks Not Used: 0

Preflush: 20bbls Fresh Water

			Circulation Time:		
			Slurry Temp:	85	Bulk Sample: Yes
			Water Temp:	65	Water Sample: Yes
			Bulk Temp:	65	Slurry Sample: Yes
			Air Temp:	83	Air Pressure 29
Slurry Returns:	Plug Bumped:	No	Pump Out Lines:	No	Float Held:
Cement Class:			Humidity:	14	Precipitation: 0

Displace:

Time	Pressure psi	Annular Pressure psi	Volume Per Stage bbls	Total Stage Volume bbls	Rate bbls/min	Treatment Detail
17:00	0.00					Arrive on Location - RIG IS PULLING DRILL PIPE
02:40	0.00					Safety Meeting
03:00	500.00		3		2	Fill Lines - FRESH WATER FILL LINES, WELL CIRCULATED AT 2BBLs AWAY
03:03	1,960.00		.5		.5	Start Pressure Test
03:11	500.00		69.9		2-3	Pump Slurry - MAG G: 344SKS, 15.8PPG, 1.14YIELD, 4.97GAL/SK, CALCULATE TOP 6507.4 TUBING IN, 6550 TUBING OUT

03:44	250.00		30	2.8	Displace - FRESH WATER DISPLACE CALCULATED DISPLACEMENT ON 12" OPEN HOLE WAS 33.8
04:10	0.00				Rig Pulls Tubing - TUBING PULLED DRY, RIG WILL CIRCULATE WELL UNTIL TIME TO TAG
08:25	0.00				TAGGED CEMENT AT 6550'
10:02	0.00				START PLUG 2
10:03	500.00		15	2	Pump Preflush - FRESH WATER TO CIRCULATE WELL
10:13	200.00		69.9	3	Pump Slurry - MAG S: 307SKS, 14.1PPG, 1.28YIELD, 5.89GAL/SK, CALCULATED TOP 2965.4 TUBING IN, 3007.7 TUBING OUT
10:38	60.00		12	2	Displace - CALCULATED DISPLACEMENT ON 12" OPEN HOLE WAS 15.4BBL PRESSURE SPIKED AT 12BBL AWAY FROM 60PSI TO 200PSI
10:40	0.00				Rig Pulls Tubing - TUBING PULLED DRY, PULLING TUBING TO 1770 TO SET NEXT PLUG NO TAG ON PLUG 2
11:35	0.00				START PLUG 3
11:37	250.00		9	2	Pump Preflush - FRESH WATER TO CIRCULATE WELL
11:45	400.00		28	3	Pump Slurry - MAG S: 123SKS, 14.1PPG, 1.28YIELD, 5.89GAL/SK, CALCULATED TOP 1553 TUBING IN, 1570 TUBING OUT
11:55	30.00		7	2	Displace - FRESH WATER DISPLACE CALCULATED DISPLACEMENT ON 12" OPEN HOLE WAS 8
12:00	0.00				Rig Pulls Tubing - TUBING PULLED DRY, PULLING TUBING ABOVE PLUG AND CIRCULATING WAITING TO TAG PLUG
16:20	0.00				TAGGED CEMENT AT 1537'
17:00	0.00				START PLUG 4
17:05	200.00		5	2	Pump Preflush - FRESH WATER TO CIRCULATE WELL
17:08	250.00		53	3	Pump Slurry - MAG S: 14.1PPG, 250sks 1.28YIELD, 5.89GAL/SK
17:50	0.00				Rig Pulls Tubing - PULLING TUBING TO SURFACE
17:54	50.00		3	.5	Pump Slurry - TOP OFF WELL WITH CEMENT IN TUB, MONITOR 15MIN FOR FALL, CEMENT DID NOT FALL
18:15	0.00				Pump Out Treating Lines - WASH TRUCK PUMP OUT LINES

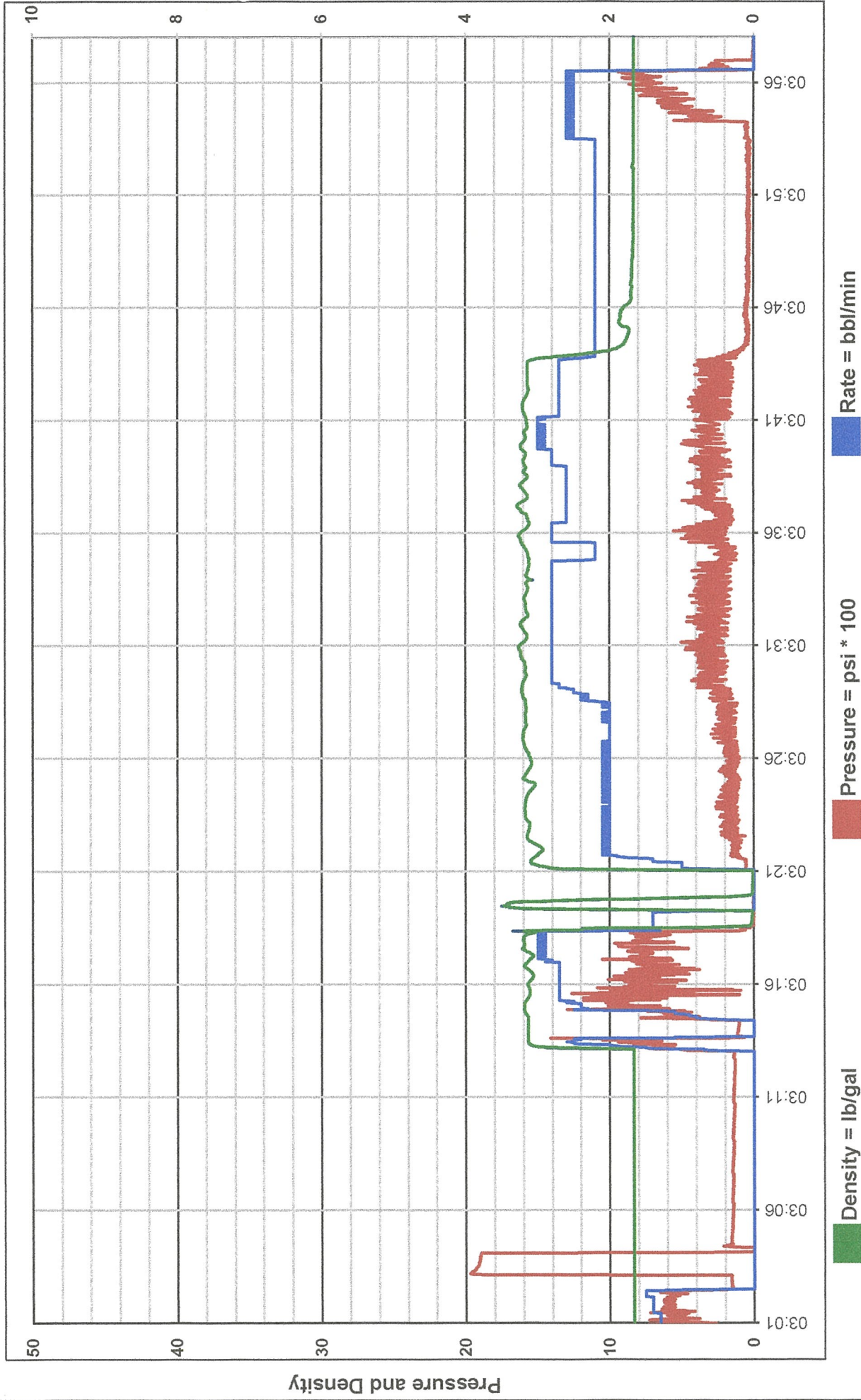




Customer: PDC ENERGY  
Date: June 18, 2021  
Ticket: 100694

Well Name: FRED HOFFNER #1  
Location: FRED HOFFNER #1  
Job Type: PLUG TO ABANDON PLUG 1

Unit  
1014

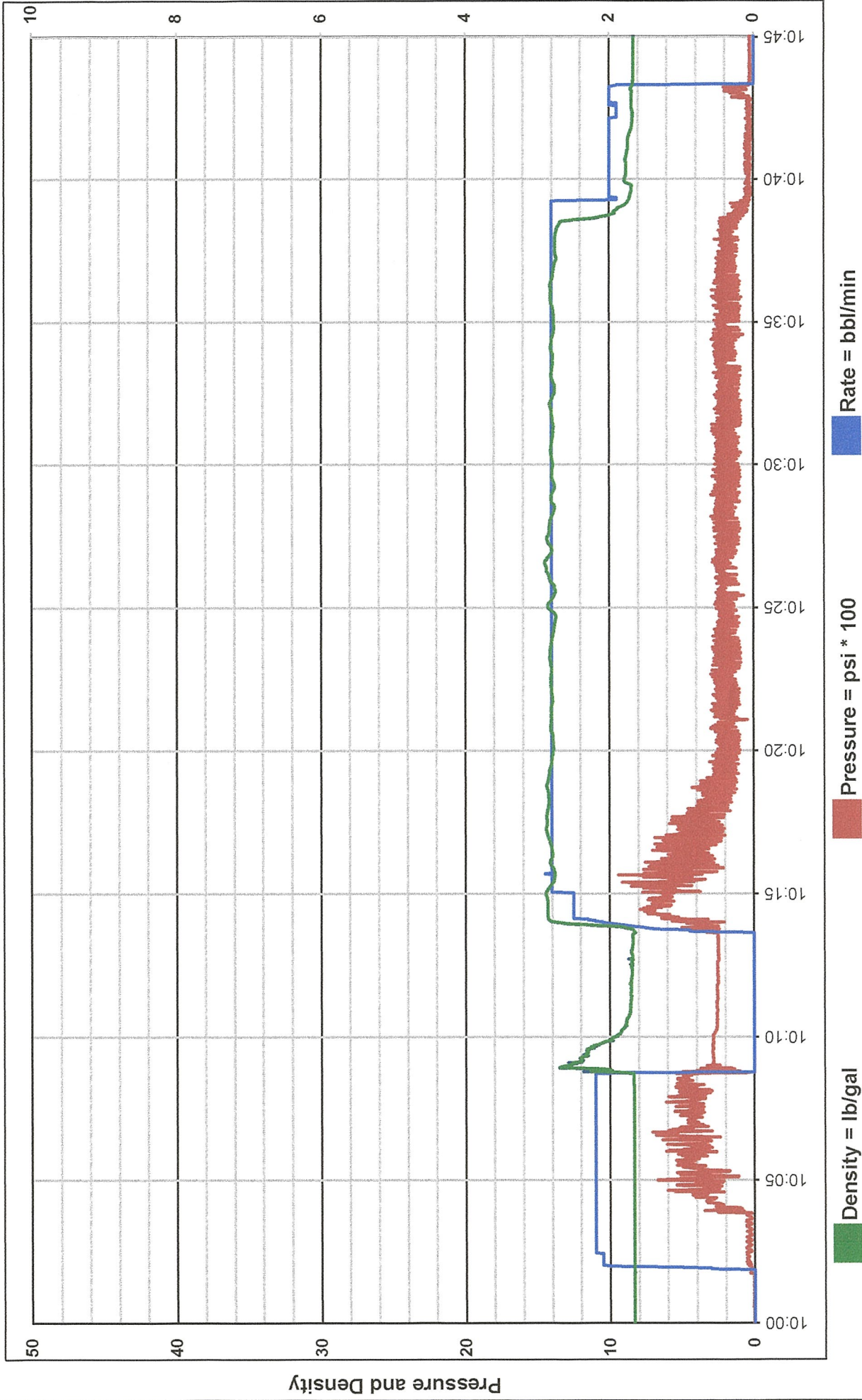




Customer: PDC ENERGY  
Date: June 18, 2021  
Ticket: 100694

Well Name: FRED HOFFNER #1  
Location: FRED HOFFNER #1  
Job Type: PLUG TO ABANDON PLUG 2

Unit  
1014







Customer: PDC

Date: June 18 2021

Ticket: 100694

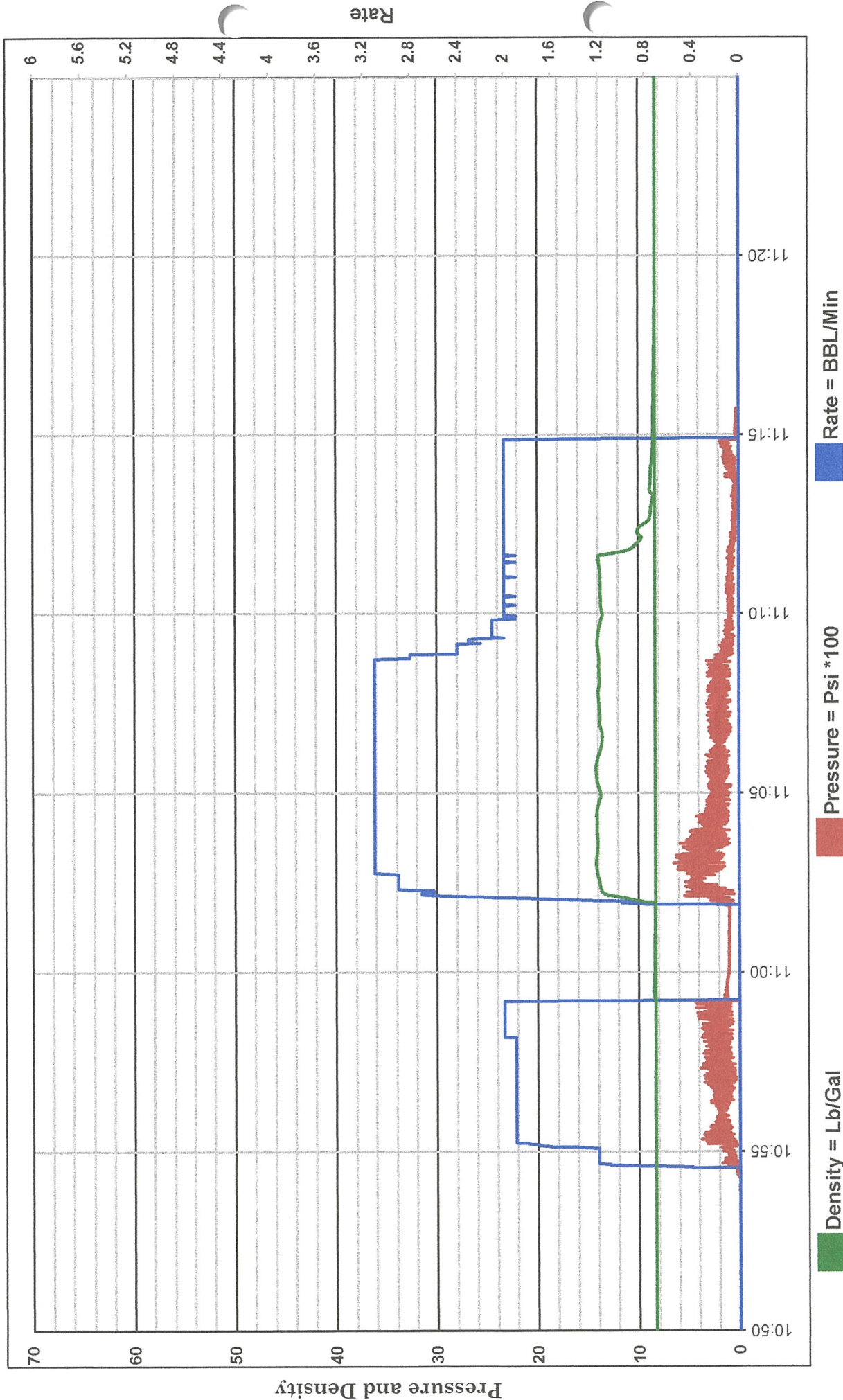
Well Name: Fred Hoffner#1

UWI: Fred Hoffner #1

Job Type: P&A

Unit

1014



Density = Lb/Gal

Pressure = Psi \* 100

Rate = BBL/Min



Customer: PDC

Date: June 18 2021

Ticket: 100694

Well Name: Fred Hoffner #1

UWI: Fred Hoffner #1

Job Type: P&A

Unit

1014

