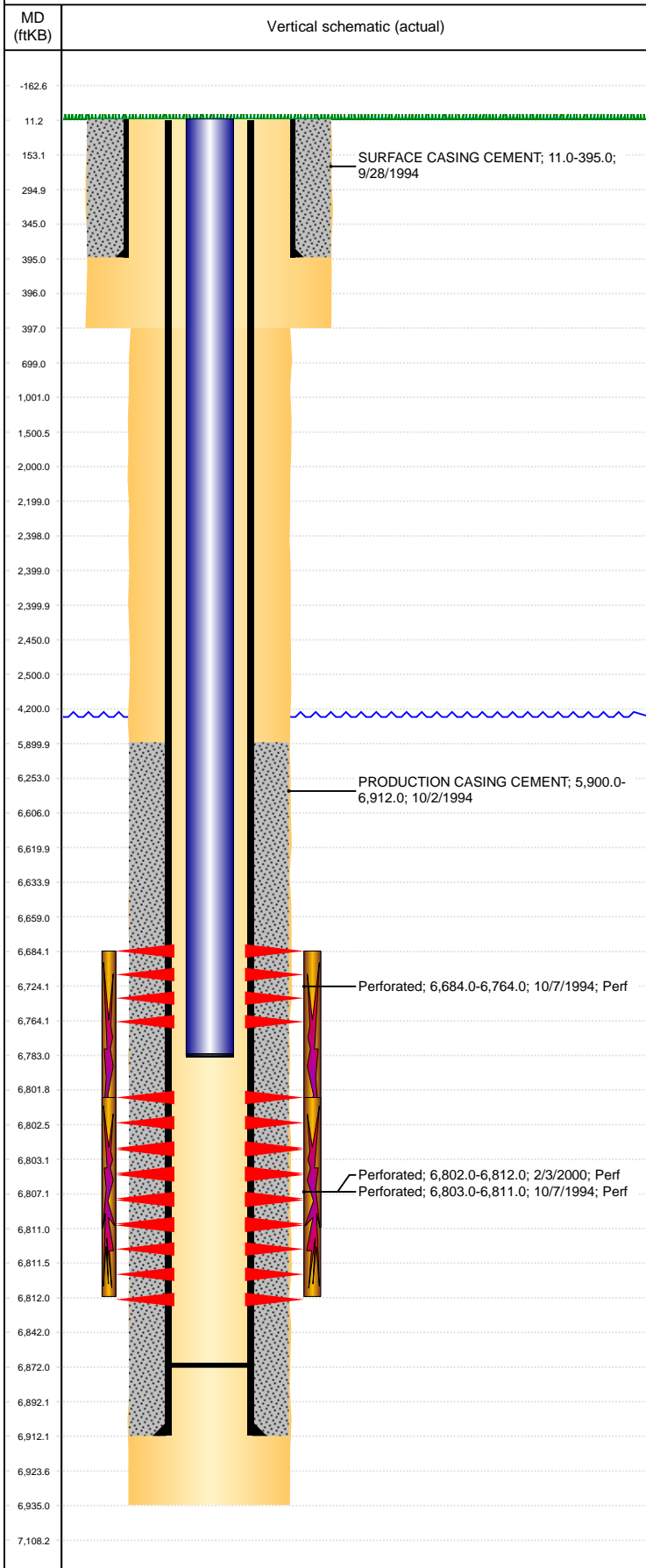


Well Name: WARDLAW 35-21

VERTICAL, ORIGINAL HOLE, 9/21/2021 2:06:34 PM



Well Header									
API 05-123-18536		Business Unit DJ BASIN			District 15		Well Config VERTICAL		
KB - GL / MSL (ft... 11.00		Spud Date 9/27/1994		P & A Date		Well Production Status PR			SoRT No
Comment LITTLE REFRAC DATA FROM 2000.									
Surface Location (Congressional)									
Qtr 3 NE	Qtr 4 NW	Section 35	Twnshp 6	Twnsh... N	Range 64	Rng E/... W	Actual Latitude (°) 40.44766000	Actual Longitude (°) -104.51918000	
Wellbore Sections									
Section Des			Size (in)			Act Top, MD (ftKB)		Act Btm, MD (ftKB)	
SURFACE			12 1/4			11		397	
PRODUCTION			7 7/8			397		6,935	
Casing Strings									
Csg Des		Run Date		OD (in)	Wt/Len (lb/ft)	Grade	Top, MD (ftKB)	MD (ftKB)	
Surface Casing		9/28/1994		8 5/8	24.00	J-55	11.0	395.0	
Production Casing		9/30/1994		4 1/2	15.10	HC-95	11.0	6,912.0	
Cement									
Des				Start Date		Top (ftKB)		Btm (ftKB)	
SURFACE CASING CEMENT				9/28/1994		11.0		395.0	
PRODUCTION CASING CEMENT				10/2/1994		5,900.0		6,912.0	
Zone Statuses									
Zone Name	Status Date	Status	Fluid Type	Job				Prod Method	
CODELL	11/8/1994	PR		DRILLING/COMPLETION - ORIGINAL, 9/27/1994...					
NIOBRRARA	11/8/1994	PR		DRILLING/COMPLETION - ORIGINAL, 9/27/1994...					
Perforation Data									
Linked Zone		Bnch/Stg	Entered Shot Total	Top (ftKB)		Btm (ftKB)		Date	
NIOBRARA, ORIGINAL HOLE			12	6,684.00		6,764.00		10/7/1994	
CODELL, ORIGINAL HOLE				6,802.00		6,812.00		2/3/2000	
CODELL, ORIGINAL HOLE			5	6,803.00		6,811.00		10/7/1994	
Stimulation Intervals									
Zone			Start Date			Top (ftKB)		Btm (ftKB)	
NIOBRARA-CODELL, ORIGINAL HOLE			10/25/1994			6,684.0		6,811.0	
NIOBRARA-CODELL, ORIGINAL HOLE			10/26/1994			6,684.0		6,811.0	
CODELL, ORIGINAL HOLE			2/7/2000			6,802.0		6,812.0	
Other In Hole									
Run Date	Des			Make		OD (in)	Top (ftKB)	Btm (ftKB)	
Logs									
Date		Type				Top, MD (ftKB)		Btm, MD (ftKB)	
10/1/1994		COMPENSATED DENSITY				360.0		6,960.0	
10/1/1994		INDUCTION				360.0		6,960.0	
10/5/1994		CEMENT BOND				5,800.0		6,868.0	
2/29/2016		GYRO				0.0		6,700.0	
Plug Back Total Depths									
Date		Type		Com				Depth (ftKB)	
9/30/1994		FLOAT COLLAR		FLOAT COLLAR				6,884.0	
10/5/1994		FILL		CBL DEPTH LOGGER				6,872.0	