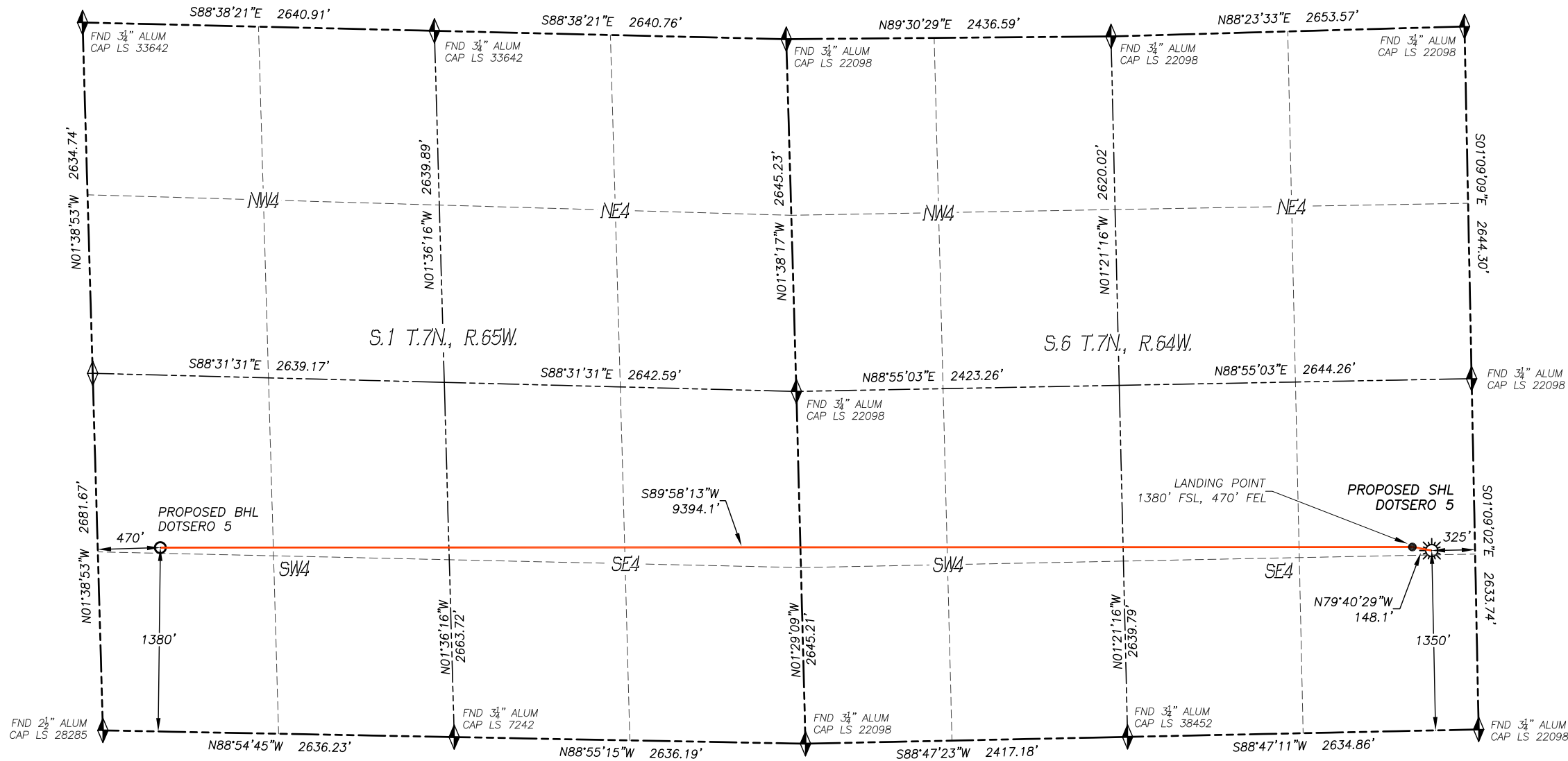


WELL LOCATION CERTIFICATE
DOTSERO 5
SECTION 6, TOWNSHIP 7 NORTH, RANGE 64 WEST OF THE 6TH P.M.



IN ACCORDANCE WITH A REQUEST FROM BAYSWATER EXPLORATION AND PRODUCTION LLC., DALEY LAND SURVEYING, INC. HAS DETERMINED THE SURFACE LOCATION OF THE DOTSERO 5 WELL TO BE 1350' FSL, 325' FEL, AS MEASURED AT NINETY (90) DEGREES FROM THE SECTION LINES OF SECTION 6, TOWNSHIP 7 NORTH, RANGE 64 WEST, AND THE BOTTOM HOLE LOCATION TO BE 1380' FSL, 470' FWL, AS MEASURED AT NINETY (90) DEGREES FROM THE SECTION LINES OF SECTION 1, TOWNSHIP 7 NORTH, RANGE 65 WEST, OF THE 6TH PRINCIPAL MERIDIAN, WELD COUNTY, COLORADO.

I HEREBY STATE THAT THIS WELL LOCATION CERTIFICATE WAS PREPARED BY ME OR UNDER MY DIRECT SUPERVISION, THAT THE WORK WAS COMPLETED ON 6/14/21 FOR AND ON BEHALF OF BAYSWATER EXPLORATION AND PRODUCTION LLC., AND THAT THIS MAP DOES NOT REPRESENT A BOUNDARY SURVEY, IT IS NOT A LAND SURVEY PLAT OR AN IMPROVEMENT SURVEY PLAT AND IT IS NOT TO BE RELIED UPON FOR THE ESTABLISHMENT OF FENCE, BUILDING OR OTHER FUTURE IMPROVEMENT LINES.

NOTES:

- BEARINGS FOR THIS MAP ARE ASSUMED AND BASED UPON GPS OBSERVATIONS MADE BETWEEN MONUMENTS LOCATED AT THE NORTHEAST CORNER AND EAST QUARTER CORNER OF SECTION 6, T.7N., R.64W.
- HORIZONTAL DATUM IS NAD83.
- VERTICAL DATUM IS NAVD88 AND ORIGINATES FROM THE LOCAL C.O.R.S. NETWORK, UTILIZING THE GEOID12A MODEL.
- SEE LOCATION DRAWING FOR VISIBLE IMPROVEMENTS WITHIN 500' OF PROPOSED DISTURBED AREA.
- SURFACE USE: PASTURE/RANGELAND.
- INST. OPERATOR: KYLE DALEY

NAD 83 LATITUDE AND LONGITUDE

SURFACE LOCATION:

LATITUDE: N40.59835°
LONGITUDE: W104.58400°
ELEV.: 4989'
PDOP.: 1.2
QTR/QTR: NE4/SE4

LANDING POINT:

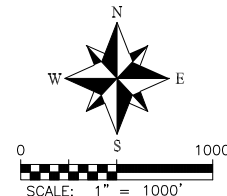
LATITUDE: N40.59843°
LONGITUDE: W104.58453°
ELEV.: 5280'
PDOP.: 1.2
QTR/QTR: NE4/SE4

BOTTOM HOLE:

LATITUDE: N40.59868°
LONGITUDE: W104.61834°

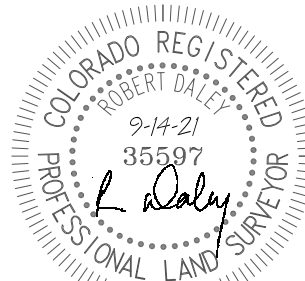
LEGEND

- FOUND MONUMENT AS DESCRIBED
- CALCULATED POSITION
- PROPOSED WELL
- EXISTING WELL
- BOTTOM HOLE



NEAREST CULTURAL ITEMS:

BUILDING: 3395'± SE
BUILDING UNIT: 3367'± SE
HIGH OCC. BLD. UNIT: 5280'±
DES. OUTSIDE ACTIVITY AREA: 5280'±
PUBLIC ROAD: 316'± E
ABOVE GROUND UTILITY: 299'± E
RAILROAD: 5280'±
PROPERTY LINE: 325'± E
SCHOOL FACILITY: 5280'±
SCHOOL PROPERTY LINE: 5280'±
CHILDCARE FACILITY: 5280'±



FOR AND ON BEHALF OF
DALEY LAND SURVEYING INC.,
Robert Daley, PLS 35597

