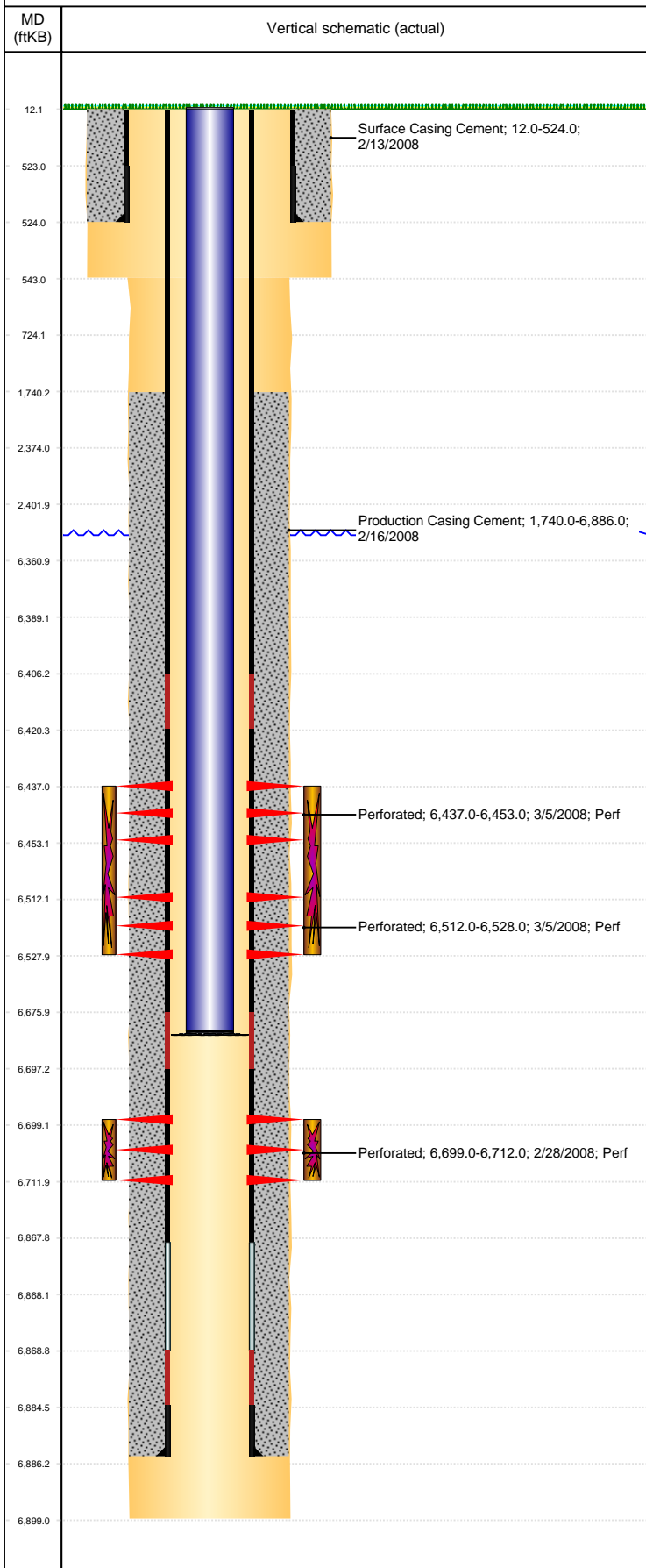


Well Name: MILLAGE C12-18

VERTICAL, ORIGINAL HOLE, 9/17/2021 10:50:46 AM



Well Header									
API 05-123-25437		Business Unit DJ BASIN			District 15		Well Config VERTICAL		
KB - GL / MSL (ft... 12.00		Spud Date 2/13/2008		P & A Date		Well Production Status PR			SoRT No
Comment THIS IS A 318Ae LOCATION									
Surface Location (Congressional)									
Qtr 3 SE	Qtr 4 NW	Section 12	Twonshp 4	Twonsh... N	Range 64	Rng E/... W	Actual Latitude (°) 40.33055304	Actual Longitude (°) -104.49923641	
Wellbore Sections									
Section Des			Size (in)			Act Top, MD (ftKB)		Act Btm, MD (ftKB)	
SURFACE			12 1/4			12		543	
PRODUCTION			7 7/8			543		6,899	
Casing Strings									
Csg Des			Run Date		OD (in)	Wt/Len (lb/ft)	Grade	Top, MD (ftKB)	MD (ftKB)
Surface			2/13/2008		8 5/8	24.00	J-55	12.0	524.0
PRODUCTION			2/16/2008		4 1/2	11.60	M-80	12.2	6,886.0
Cement									
Des					Start Date		Top (ftKB)		Btm (ftKB)
Surface Casing Cement					2/13/2008		12.0		524.0
Production Casing Cement					2/16/2008		1,740.0		6,886.0
Zone Statuses									
Zone Name	Status Date	Status	Fluid Type	Job				Prod Method	
NIOBRARA	3/14/2008	PR	Gas	DRILLING/COMPLETION - ORIGINAL, 2/11/2008...					
CODELL	3/14/2008	PR	Gas	DRILLING/COMPLETION - ORIGINAL, 2/11/2008...					
Perforation Data									
Linked Zone		Bnch/Stg	Entered Shot Total	Top (ftKB)		Btm (ftKB)		Date	
NIOBRARA, ORIGINAL HOLE		A	64	6,437.00		6,453.00		3/5/2008	
NIOBRARA, ORIGINAL HOLE		B	64	6,512.00		6,528.00		3/5/2008	
CODELL, ORIGINAL HOLE			52	6,699.00		6,712.00		2/28/2008	
Stimulation Intervals									
Zone				Start Date		Top (ftKB)		Btm (ftKB)	
NIOBRARA, ORIGINAL HOLE				3/5/2008		6,437.0		6,528.0	
CODELL, ORIGINAL HOLE				3/5/2008		6,699.0		6,712.0	
Other In Hole									
Run Date	Des				Make	OD (in)	Top (ftKB)	Btm (ftKB)	
Logs									
Date		Type					Top, MD (ftKB)		Btm, MD (ftKB)
2/15/2008		Caliper/Comp.Density/Neutron/GR/SP/ML					2,500.0		6,875.0
2/15/2008		DIL/GR/SP/Caliper					523.0		6,895.0
2/27/2008		CBL/CCL/GR					1,670.0		6,840.0
Plug Back Total Depths									
Date		Type			Com				Depth (ftKB)
2/15/2008		FLOAT COLLAR							6,868.0