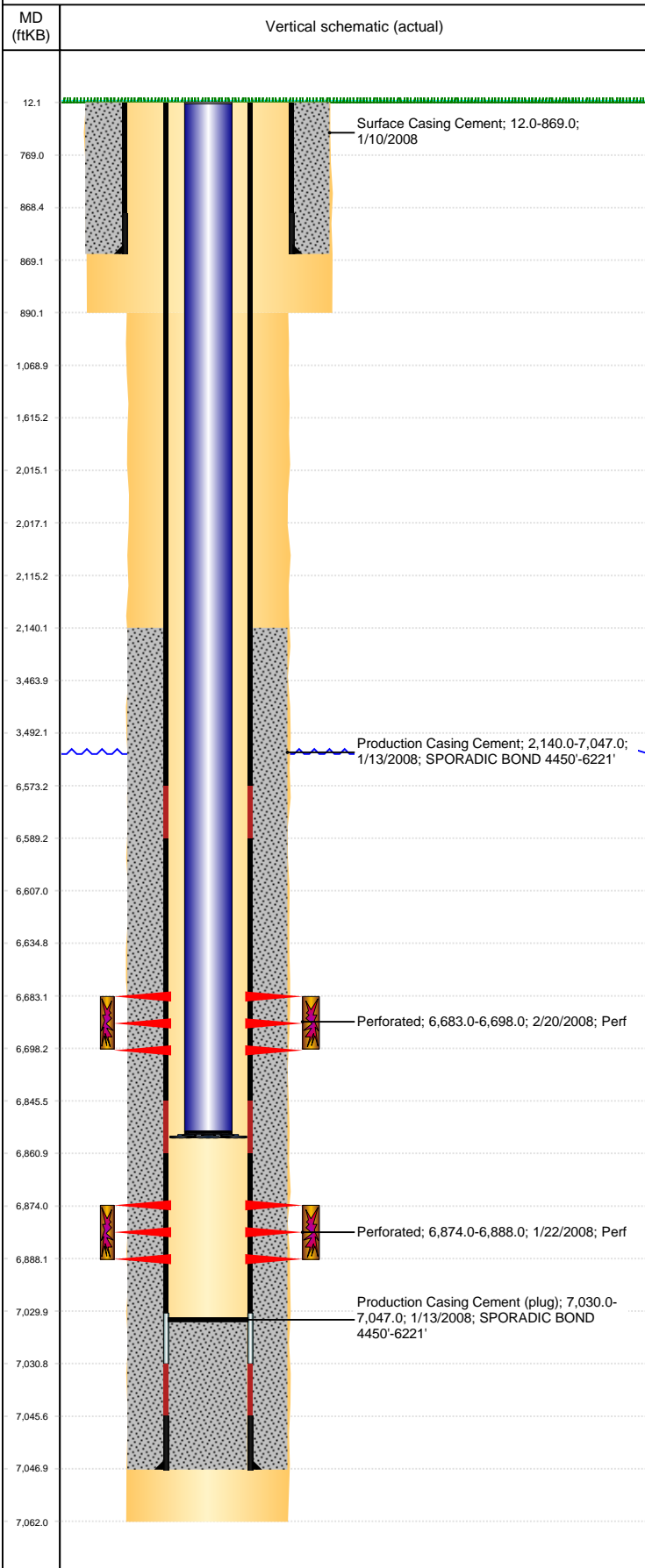


**Well Name: LANDWEHR A34-04**

VERTICAL, ORIGINAL HOLE, 9/16/2021 2:40:29 PM



Well Header										
API 05-123-26571		Business Unit DJ BASIN			District 15		Well Config VERTICAL			
KB - GL / MSL (ft... 12.00		Spud Date 1/9/2008		P & A Date		Well Production Status PR			SoRT No	
Comment										
Surface Location (Congressional)										
Qtr 3 NW	Qtr 4 NW	Section 34	Twnshp 6	Twnsh... N	Range 64	Rng E... W	Actual Latitude (°) 40.44856650	Actual Longitude (°) -104.54406395		
Wellbore Sections										
Section Des			Size (in)			Act Top, MD (ftKB)		Act Btm, MD (ftKB)		
SURFACE			12 1/4			12		890		
PRODUCTION			7 7/8			890		7,062		
Casing Strings										
Csg Des			Run Date		OD (in)	Wt/Len (lb/ft)	Grade	Top, MD (ftKB)	MD (ftKB)	
Surface			1/10/2008		8 5/8	24.00	J-55	12.0	869.0	
Production			1/13/2008		4 1/2	11.60	M-80	12.1	7,047.0	
Cement										
Des					Start Date		Top (ftKB)		Btm (ftKB)	
Surface Casing Cement					1/10/2008		12.0		869.0	
Production Casing Cement					1/13/2008		2,140.0		7,047.0	
Zone Statuses										
Zone Name		Status Date	Status	Fluid Type	Job				Prod Method	
CODELL		3/6/2008	PR	Water	DRILLING/COMPLETION - ORIGINAL, 1/9/2008...				Flowing	
CODELL		2/16/2010	PR							
NIOBRARA		2/16/2010	PR							
NIOBRARA		7/9/2015	PR							
Perforation Data										
Linked Zone			Bnch/Stg	Entered Shot Total	Top (ftKB)		Btm (ftKB)		Date	
NIOBRARA, ORIGINAL HOLE			B	60	6,683.00		6,698.00		2/20/2008	
CODELL, ORIGINAL HOLE				56	6,874.00		6,888.00		1/22/2008	
Stimulation Intervals										
Zone					Start Date		Top (ftKB)		Btm (ftKB)	
NIOBRARA, ORIGINAL HOLE					2/20/2008		6,683.0		6,698.0	
CODELL, ORIGINAL HOLE					2/20/2008		6,874.0		6,888.0	
Other In Hole										
Run Date		Des			Make		OD (in)	Top (ftKB)	Btm (ftKB)	
Logs										
Date		Type					Top, MD (ftKB)		Btm, MD (ftKB)	
1/13/2008		COMPENSATED DENSITY					2,600.0		7,042.0	
1/13/2008		INDUCTION					869.0		7,062.0	
1/21/2008		CBL/CCL/GR					2,020.0		7,002.0	
3/12/2016		GYRO					0.0		6,800.0	
Plug Back Total Depths										
Date		Type			Com				Depth (ftKB)	
1/21/2008		FILL			DEPTH LOGGER ON CBL				7,009.0	
9/10/2008		PLUG REMNANTS			DRILL CIFT AND CIRCULATE TO 7030'				7,030.0	