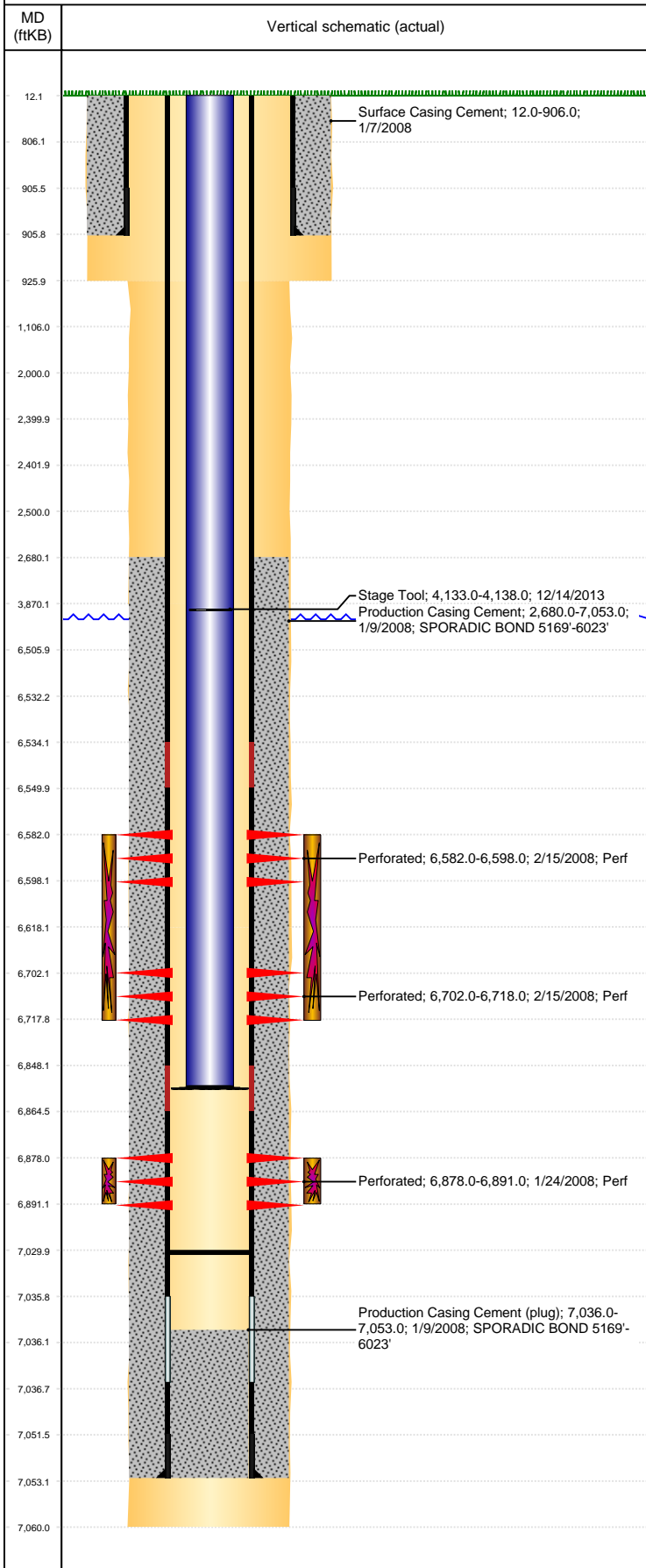


Well Name: LANDWEHR A34-03X

VERTICAL, ORIGINAL HOLE, 9/16/2021 2:19:01 PM



Well Header									
API 05-123-26572		Business Unit DJ BASIN			District 15		Well Config VERTICAL		
KB - GL / MSL (ft... 12.00		Spud Date 1/5/2008		P & A Date		Well Production Status PR			SoRT No
Comment									
Surface Location (Congressional)									
Qtr 3 NE	Qtr 4 NW	Section 34	Twnshp 6	Twnsh... N	Range 64	Rng E/... W	Actual Latitude (°) 40.44860795	Actual Longitude (°) -104.53893227	
Wellbore Sections									
Section Des			Size (in)			Act Top, MD (ftKB)		Act Btm, MD (ftKB)	
SURFACE			12 1/4			12		926	
PRODUCTION			7 7/8			926		3,870	
PRODUCTION			7 7/8			3870		6,618	
PRODUCTION			7 7/8			6618		7,060	
Casing Strings									
Csg Des			Run Date		OD (in)	Wt/Len (lb/ft)	Grade	Top, MD (ftKB)	MD (ftKB)
Surface			1/7/2008		8 5/8	24.00	J-55	12.0	906.0
Production			1/9/2008		4 1/2	11.60	M-80	12.2	7,053.0
Cement									
Des					Start Date		Top (ftKB)		Btm (ftKB)
Surface Casing Cement					1/7/2008		12.0		906.0
Production Casing Cement					1/9/2008		2,680.0		7,053.0
Zone Statuses									
Zone Name	Status Date	Status	Fluid Type	Job				Prod Method	
NIOBRARA	3/6/2008	PR	Water Water	DRILLING/COMPLETION - ORIGINAL, 1/4/2008...				Flowing Flowing	
NIOBRARA	2/16/2010	PR							
CODELL	2/16/2010	PR							
CODELL	7/9/2015	PR							
Perforation Data									
Linked Zone		Bnch/Stg	Entered Shot Total	Top (ftKB)		Btm (ftKB)		Date	
NIOBRARA, ORIGINAL HOLE		A	64	6,582.00		6,598.00		2/15/2008	
NIOBRARA, ORIGINAL HOLE		B	64	6,702.00		6,718.00		2/15/2008	
CODELL, ORIGINAL HOLE			52	6,878.00		6,891.00		1/24/2008	
Stimulation Intervals									
Zone				Start Date		Top (ftKB)		Btm (ftKB)	
NIOBRARA, ORIGINAL HOLE				2/15/2008		6,582.0		6,718.0	
CODELL, ORIGINAL HOLE				2/15/2008		6,878.0		6,891.0	
Other In Hole									
Run Date	Des			Make		OD (in)	Top (ftKB)	Btm (ftKB)	
Logs									
Date		Type				Top, MD (ftKB)		Btm, MD (ftKB)	
1/8/2008		Caliper/Comp.Density/Neutron/GR/SP/ML				2,650.0		7,048.0	
1/8/2008		DIL/GR/SP/Caliper				906.0		7,068.0	
1/23/2008		CBL/CCL/GR				2,540.0		7,006.0	
3/12/2016		GYRO				0.0		6,850.0	
Plug Back Total Depths									
Date		Type		Com				Depth (ftKB)	
1/23/2008		FILL		DEPTH LOGGER ON CBL				7,113.0	
9/8/2008		PLUG REMNANTS		DRILL CIFTF AND CIRCULATE TO 7030'				7,030.0	