

Inspection Photos
Operator: Petrox
Facility: 007-06215
Date: 9/13/2021



Photo 1. View of the project area from the well pad entrance facing center.



Photo 2. View of the southern fill slope from the southeastern edge facing westward. Revegetation is progressing in portions, largely with western wheatgrass.



Photo 3. View of Canada thistles within the southern project area (outside of fence). Approx. 30 individuals observed.

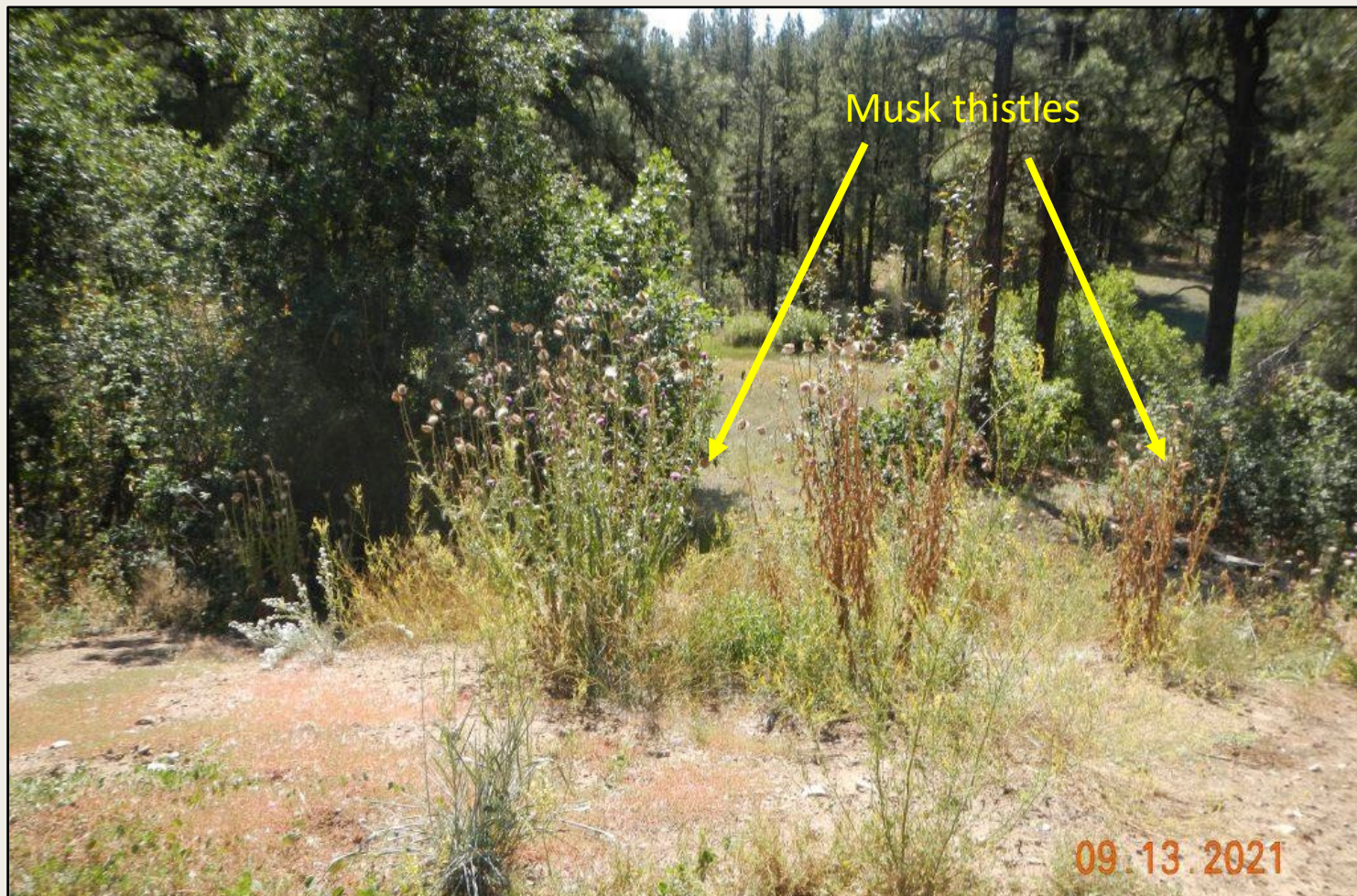


Photo 4. View of musk thistles (approx. 100) observed within the project area, largely in a post-flowering condition and dispersing seed.



Photo 5. View of the reference area comprised of ponderosa pine forest with Oregon grape, western wheatgrass, smooth brome, serviceberry, and gambel oak in the understory.