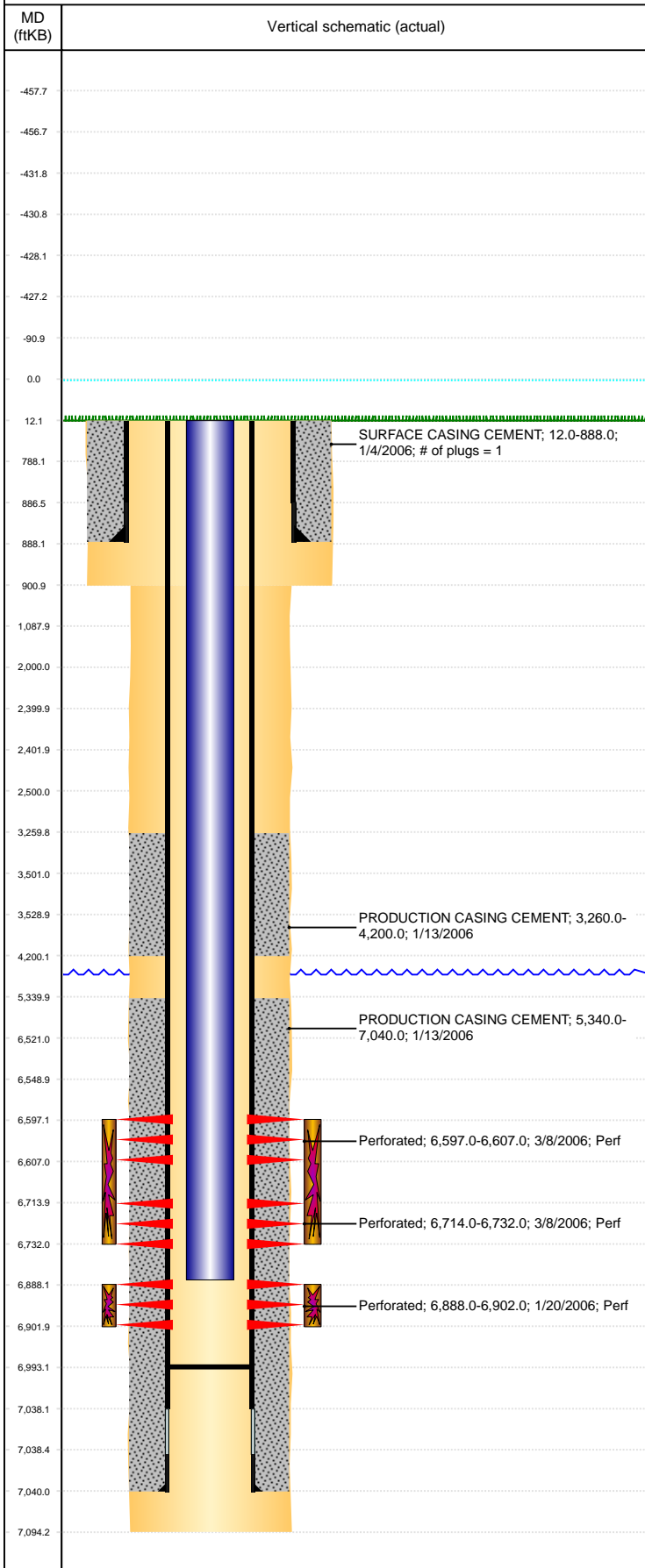


**Well Name: HOWARD A27-05**

VERTICAL, ORIGINAL HOLE, 9/13/2021 12:09:16 PM



Well Header									
API 05-123-23474		Business Unit DJ BASIN			District 15		Well Config VERTICAL		
KB - GL / MSL (ft... 12.00		Spud Date 1/3/2006		P & A Date		Well Production Status PR			SoRT No
Comment SURVEY TOOL LEFT IN HOLE BELOW THE 4 1/2" CSG  FP PUSHED TO 6993'									
Surface Location (Congressional)									
Qtr 3 SW	Qtr 4 NW	Section 27	Twنشp 6	Twنش... N	Range 64	Rng E/... W	Actual Latitude (°) 40.45896514	Actual Longitude (°) -104.54298833	
Wellbore Sections									
Section Des			Size (in)			Act Top, MD (ftKB)		Act Btm, MD (ftKB)	
SURFACE			12 1/4			12		901	
PRODUCTION			7 7/8			901		7,094	
Casing Strings									
Csg Des		Run Date		OD (in)	Wt/Len (lb/ft)	Grade	Top, MD (ftKB)	MD (ftKB)	
Surface		1/4/2006		8 5/8	24.00		12.0	888.0	
Production		1/13/2006		4 1/2	11.60	N-80	12.0	7,040.0	
Cement									
Des				Start Date		Top (ftKB)		Btm (ftKB)	
SURFACE CASING CEMENT				1/4/2006		12.0		888.0	
PRODUCTION CASING CEMENT				1/13/2006		3,260.0		4,200.0	
PRODUCTION CASING CEMENT				1/13/2006		5,340.0		7,040.0	
Zone Statuses									
Zone Name		Status Date	Status	Fluid Type	Job			Prod Method	
NIOBRARA		3/9/2006	PR	Oil				Flowing	
NIOBRARA		2/1/2010	PR	Water				Flowing	
CODELL		2/1/2010	PR	Water				Flowing	
CODELL		7/21/2015	PR						
Perforation Data									
Linked Zone		Bnch/Stg	Entered Shot Total	Top (ftKB)		Btm (ftKB)		Date	
NIOBRARA, ORIGINAL HOLE			60	6,597.00		6,607.00		3/8/2006	
NIOBRARA, ORIGINAL HOLE			108	6,714.00		6,732.00		3/8/2006	
CODELL, ORIGINAL HOLE			56	6,888.00		6,902.00		1/20/2006	
Stimulation Intervals									
Zone			Start Date		Top (ftKB)		Btm (ftKB)		
NIOBRARA, ORIGINAL HOLE			3/8/2006		6,597.0		6,732.0		
CODELL, ORIGINAL HOLE			3/8/2006		6,888.0		6,902.0		
Other In Hole									
Run Date		Des			Make		OD (in)	Top (ftKB)	Btm (ftKB)
Logs									
Date		Type				Top, MD (ftKB)		Btm, MD (ftKB)	
1/13/2006		COMPENSATED DENSITY				2,000.0		6,989.0	
1/13/2006		INDUCTION				888.0		7,009.0	
1/20/2006		CBL/CCL/GR				5,000.0		6,957.0	
2/23/2016		GYRO				0.0		6,800.0	
Plug Back Total Depths									
Date		Type		Com				Depth (ftKB)	
1/20/2006		FILL		CBL DEPTH LOGGER				6,959.0	
11/2/2006		PLUG REMNANTS		FP PUSHED				6,993.0	