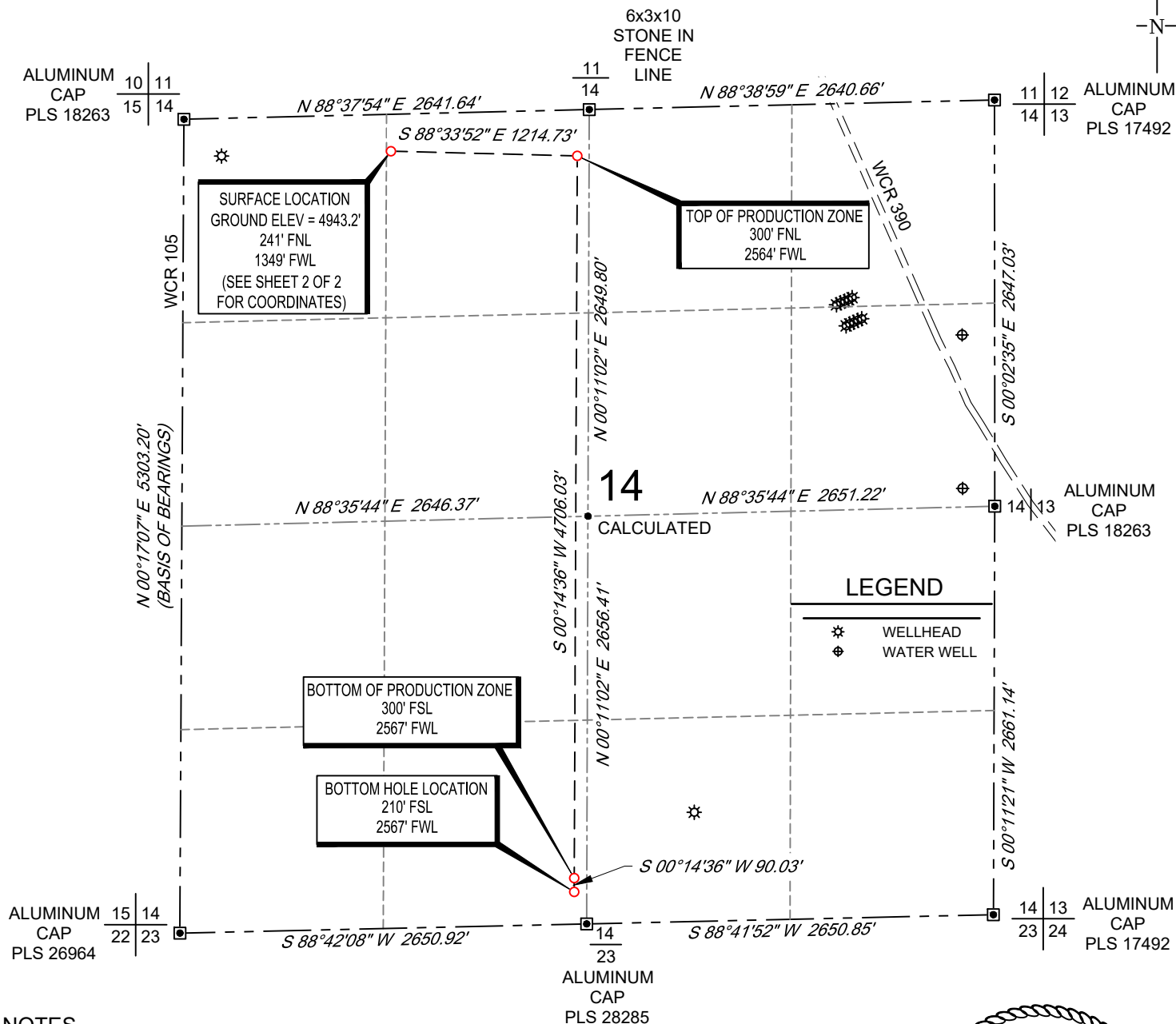


SCALE: 1" = 1000'

0' 500' 1000'

WELL LOCATION MAP

SHL NE/4 NW/4, SECTION 14, TOWNSHIP 8-N, RANGE 60-W
 TPZ NE/4 NW/4, SECTION 14, TOWNSHIP 8-N, RANGE 60-W
 BPZ / BHL SE/4 SW/4, SECTION 14, TOWNSHIP 8-N, RANGE 60-W
 WELD COUNTY, COLORADO



NOTES

- Horizontal (NAD 83) and vertical (NAVD 88) datum is based on the Trimble VRS Network or OPUS Solution. The lineal units of measurement are U.S. Survey Foot.
- All directions, distances, and dimensions shown hereon are based on coordinates from the "Colorado coordinate system of 1983 north zone" (article 52 of title 38, C.R.S.).
- All section line dimensions shown hereon are based on field measurements of existing monuments and/or physical evidence found in the field unless otherwise indicated.
- Physical features shown hereon are for graphical representation only.
- See Form 2A, if applicable for visible improvements within 500' of wellhead.
- Distances to nearest section lines are measured perpendicularly.
- This is not a land survey nor land survey plat.

PDOP Reading: 1.5 Instrument Operator: **Brent Garcia**

Date Surveyed: **05/24/2018**

SURVEYOR'S STATEMENT

The undersigned hereby states that the well location shown hereon was staked on the ground based on existing monumentation and/or physical evidence found in the field and is correct to the best of my knowledge, information and belief.



VERDAD RESOURCES
 SCHNEIDER 1414-02H
 JOB NO. 117800

| | | | |
|---------------------------------|------------|------------|------|
| JLS | 06/11/2018 | REVISION: | |
| SHEET : | 1 OF 2 | INT | DATE |
| FILE:LO_SCHNEIDER_1414_02H_REV5 | PAV | 07/22/2021 | |



COORDINATE TABLE



ABBREVIATIONS LEGEND:

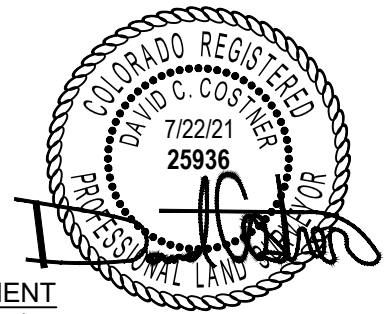
| | |
|-----------------------------------------------|-----------|
| SURFACE HOLE LOCATION | (SHL) |
| LANDING POINT LOCATION | (LP) |
| TOP OF PRODUCTION ZONE | (TPZ) |
| BOTTOM OF PRODUCTION ZONE | (BPZ) |
| BOTTOM HOLE LOCATION | (BHL) |
| LATITUDE NAD 83 | (LAT.83) |
| LONGITUDE NAD 83 | (LONG.83) |
| LATITUDE NAD 27 | (LAT.27) |
| LONGITUDE NAD 27 | (LONG.27) |
| COLORADO COORDINATE SYSTEM OF 1983 NORTH ZONE | (SPC83) |
| COLORADO COORDINATE SYSTEM OF 1927 NORTH ZONE | (SPC27) |

Note:

1. All (SPC83) and (SPC27) coordinate values are U.S. Survey Feet.
2. All Latitude and Longitude values are decimal degrees.

SCHNEIDER 1414-02H

| | (LAT.83) | (LONG.83) | NORTHING EASTING | | (LAT.27) | (LONG.27) | NORTHING EASTING | |
|-------|-------------|--------------|------------------|------------|-------------|--------------|------------------|------------|
| | | | (SPC83) | (SPC83) | | | (SPC27) | (SPC27) |
| (SHL) | N40.6691021 | W104.0624950 | 1489828.85 | 3398753.30 | N40.6691155 | W104.0619904 | 489827.47 | 2398903.82 |
| (TPZ) | N40.6689645 | W104.0581198 | 1489798.42 | 3399967.65 | N40.6689778 | W104.0576153 | 489797.01 | 2400118.21 |
| (BPZ) | N40.6560499 | W104.0584676 | 1485092.43 | 3399947.67 | N40.6560633 | W104.0579629 | 485091.11 | 2400098.29 |
| (BHL) | N40.6558029 | W104.0584743 | 1485002.40 | 3399947.29 | N40.6558162 | W104.0579695 | 485001.08 | 2400097.91 |



SURVEYOR'S STATEMENT

The undersigned hereby states that the well location shown hereon was staked on the ground based on existing monumentation and/or physical evidence found in the field and is correct to the best of my knowledge, information and belief.



VERDAD RESOURCES
SCHNEIDER 1414-02H
JOB NO. 117800

| | | | |
|---------------------------------|------------|------------|------|
| JLS | 06/11/2018 | REVISION: | |
| SHEET : | 2 OF 2 | INT | DATE |
| FILE:LO_SCHNEIDER_1414_02H_REV5 | PAV | 07/22/2021 | |