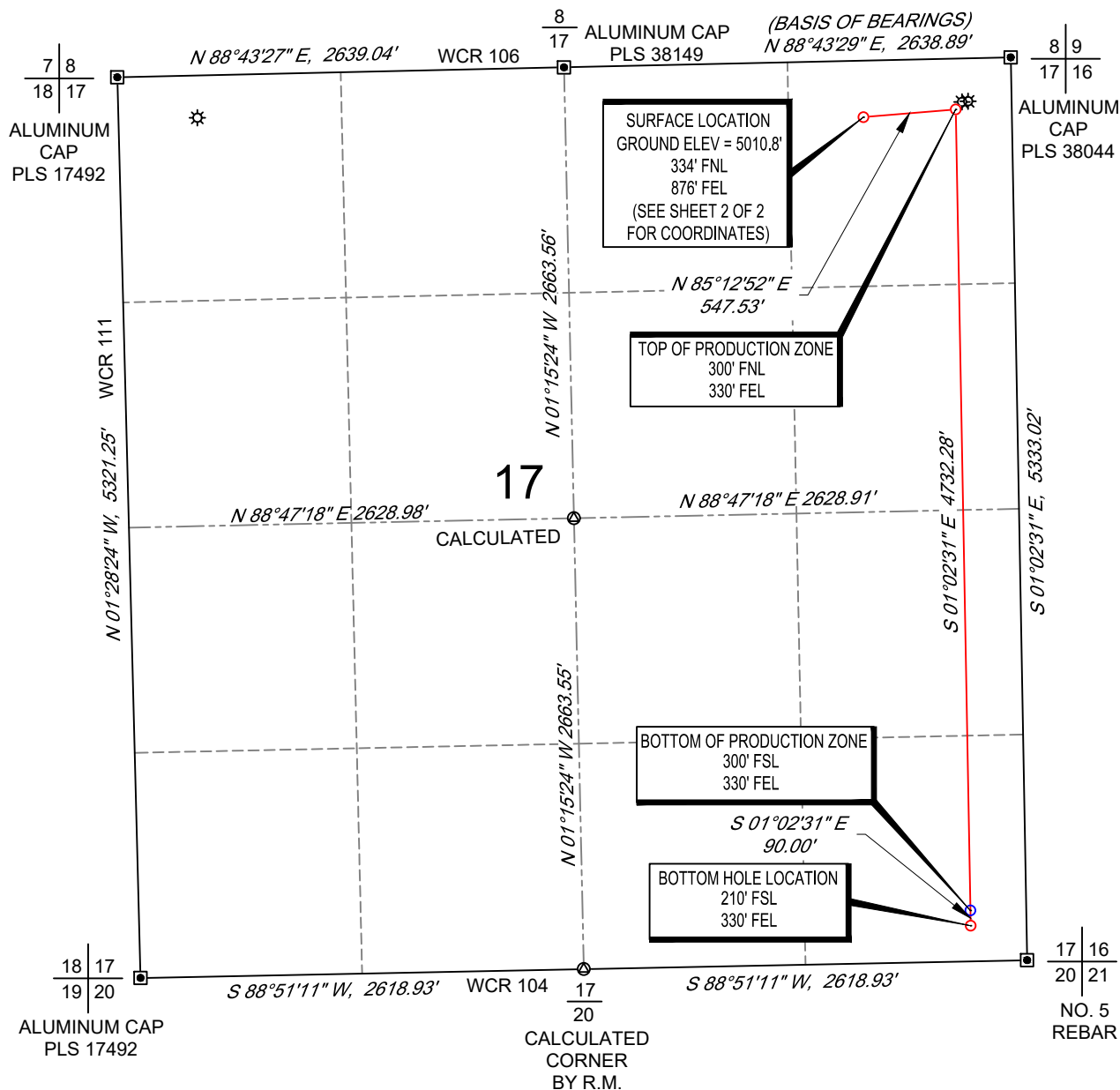


SCALE: 1" = 1000'
0' 500' 1000'

WELL LOCATION MAP

SHL NE/4 NE/4, SECTION 17, TOWNSHIP 9-N, RANGE 59-W
TPZ NE/4 NE/4, SECTION 17, TOWNSHIP 9-N, RANGE 59-W
BPZ/BHL SE/4 SE/4, SECTION 17, TOWNSHIP 9-N, RANGE 59-W
WELD COUNTY, COLORADO



NOTES

1. Horizontal (NAD 83) and vertical (NAVD 88) datum is based on the Trimble VRS Network. The lineal units of measurement are U.S. Survey Foot.
2. All directions, distances, and dimensions shown hereon are based on coordinates from the "Colorado coordinate system of 1983 north zone" (Title 38, Article 52 C.R.S.).
3. All section line dimensions shown hereon are based on field measurements of existing monuments and/or physical evidence found in the field unless otherwise indicated.
4. Physical features shown hereon are for graphical representation only.
5. See Form 2A for visible improvements within 500' of wellhead.
6. Distances to nearest section lines are measured perpendicularly.
7. This is not a land survey nor land survey plat.

PDOP Reading: 1.5 Instrument Operator: **Brent Garcia**

Date Surveyed: **03/20/2018**



SURVEYOR'S STATEMENT

The undersigned hereby states that the well location shown hereon was staked on the ground based on existing monumentation and/or physical evidence found in the field and is correct to the best of my knowledge, information and belief.



VERDAD RESOURCES
TIMBRO 1717-14H
JOB NO: 116051

MML	03/30/2018	REVISION:	
SHEET :	1 OF 2	MR	08/13/2021
FILE:LO_TIMBRO_1717_14H_REV5		SW	09/02/2021

COORDINATE TABLE



ABBREVIATIONS LEGEND:

SURFACE HOLE LOCATION	(SHL)
LANDING POINT LOCATION	(LP)
TOP OF PRODUCTION ZONE	(TPZ)
BOTTOM OF PRODUCTION ZONE	(BPZ)
BOTTOM HOLE LOCATION	(BHL)
LATITUDE NAD 83	(LAT.83)
LONGITUDE NAD 83	(LONG.83)
LATITUDE NAD 27	(LAT.27)
LONGITUDE NAD 27	(LONG.27)
COLORADO COORDINATE SYSTEM OF 1983 NORTH ZONE	(SPC83)
COLORADO COORDINATE SYSTEM OF 1927 NORTH ZONE	(SPC27)

Note:

1. All (SPC83) and (SPC27) coordinate values are U.S. Survey Feet.
2. All Latitude and Longitude values are decimal degrees.

TIMBRO 1717-14H

	(LAT.83)	(LONG.83)	NORTHING EASTING		(LAT.27)	(LONG.27)	NORTHING EASTING	
			(SPC83)	(SPC83)			(SPC27)	(SPC27)
(SHL)	N40.7568761	W103.9957705	1522109.72	3416718.02	N40.7568886	W103.9952668	522107.58	2416868.61
(TPZ)	N40.7569760	W103.9937985	1522155.39	3417263.64	N40.7569885	W103.9932948	522153.26	2417414.25
(BPZ)	N40.7439871	W103.9937780	1517423.90	3417349.70	N40.7439995	W103.9932743	517421.81	2417500.35
(BHL)	N40.7437401	W103.9937776	1517333.91	3417351.34	N40.7437525	W103.9932739	517331.83	2417501.99



SURVEYOR'S STATEMENT

The undersigned hereby states that the well location shown hereon was staked on the ground based on existing monumentation and/or physical evidence found in the field and is correct to the best of my knowledge, information and belief.



VERDAD RESOURCES
TIMBRO 1717-14H
JOB NO: 116051

MML	03/30/2018	REVISION:	
SHEET :	2 OF 2	SW	08/13/2021
FILE:LO_TIMBRO_1717_14H_REV5		SW	09/02/2021