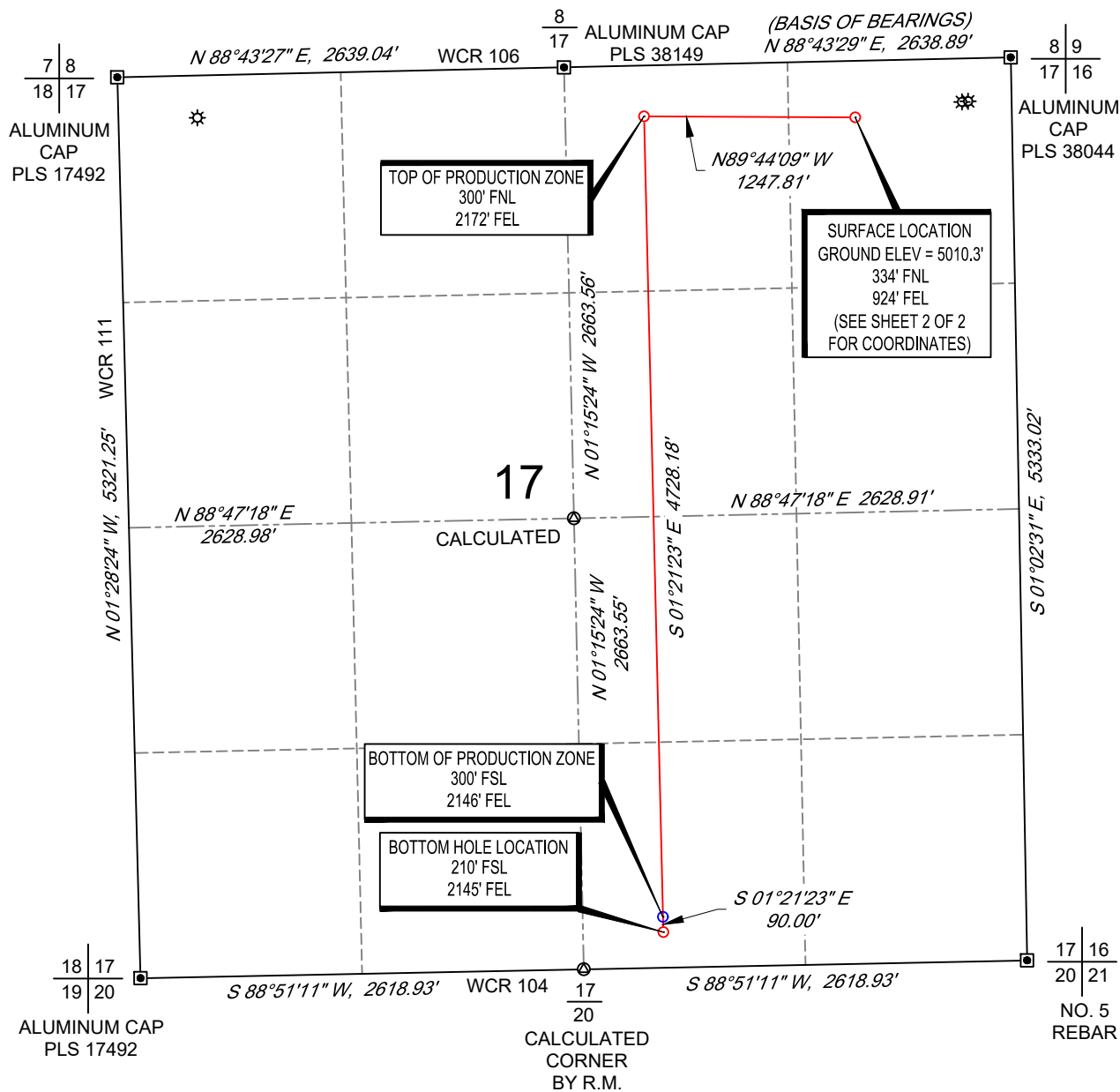


SCALE: 1" = 1000'  
0' 500' 1000'

# WELL LOCATION MAP

SHL NE/4 NE/4, SECTION 17, TOWNSHIP 9-N, RANGE 59-W  
TPZ NW/4 NE/4, SECTION 17, TOWNSHIP 9-N, RANGE 59-W  
BPZ/BHL SW/4 SE/4, SECTION 17, TOWNSHIP 9-N, RANGE 59-W  
WELD COUNTY, COLORADO

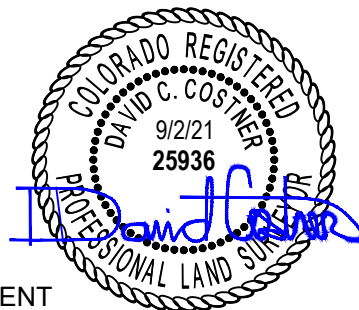


## NOTES

1. Horizontal (NAD 83) and vertical (NAVD 88) datum is based on the Trimble VRS Network. The lineal units of measurement are U.S. Survey Foot.
2. All directions, distances, and dimensions shown hereon are based on coordinates from the "Colorado coordinate system of 1983 north zone" (Title 38, Article 52 C.R.S.).
3. All section line dimensions shown hereon are based on field measurements of existing monuments and/or physical evidence found in the field unless otherwise indicated.
4. Physical features shown hereon are for graphical representation only.
5. See Form 2A for visible improvements within 500' of wellhead.
6. Distances to nearest section lines are measured perpendicularly.
7. This is not a land survey nor land survey plat.

PDOP Reading: 1.5 Instrument Operator: **Brent Garcia**

Date Surveyed: **03/20/2018**



## SURVEYOR'S STATEMENT

The undersigned hereby states that the well location shown hereon was staked on the ground based on existing monumentation and/or physical evidence found in the field and is correct to the best of my knowledge, information and belief.



VERDAD RESOURCES  
**TIMBRO 1717-11H**  
**JOB NO: 116051**

MML	03/30/2018	REVISION:	
SHEET :	1 OF 2	SW	08/13/2021
FILE:LO_TIMBRO_1717_11H_REV5		SW	09/02/2021

# COORDINATE TABLE



## ABBREVIATIONS LEGEND:

SURFACE HOLE LOCATION	(SHL)
LANDING POINT LOCATION	(LP)
TOP OF PRODUCTION ZONE	(TPZ)
BOTTOM OF PRODUCTION ZONE	(BPZ)
BOTTOM HOLE LOCATION	(BHL)
LATITUDE NAD 83	(LAT.83)
LONGITUDE NAD 83	(LONG.83)
LATITUDE NAD 27	(LAT.27)
LONGITUDE NAD 27	(LONG.27)
COLORADO COORDINATE SYSTEM OF 1983 NORTH ZONE	(SPC83)
COLORADO COORDINATE SYSTEM OF 1927 NORTH ZONE	(SPC27)

## Note:

1. All (SPC83) and (SPC27) coordinate values are U.S. Survey Feet.
2. All Latitude and Longitude values are decimal degrees.

## TIMBRO 1717-11H

	(LAT.83)	(LONG.83)	NORTHING EASTING		(LAT.27)	(LONG.27)	NORTHING EASTING	
			(SPC83)	(SPC83)			(SPC27)	(SPC27)
(SHL)	N40.7568754	W103.9959437	1522108.65	3416670.03	N40.7568879	W103.9954401	522106.51	2416820.62
(TPZ)	N40.7569492	W104.0004467	1522114.40	3415422.24	N40.7569616	W103.9999430	522112.25	2415572.80
(BPZ)	N40.7439718	W104.0003312	1517387.55	3415534.17	N40.7439842	W103.9998275	517385.44	2415684.78
(BHL)	N40.7437248	W104.0003290	1517297.57	3415536.30	N40.7437372	W103.9998253	517295.47	2415686.91



## SURVEYOR'S STATEMENT

The undersigned hereby states that the well location shown hereon was staked on the ground based on existing monumentation and/or physical evidence found in the field and is correct to the best of my knowledge, information and belief.



VERDAD RESOURCES  
TIMBRO 1717-11H  
JOB NO: 116051

MML	03/30/2018	REVISION:	
SHEET :	2 OF 2	SW	08/13/2021
FILE:LO_TIMBRO_1717_11H_REV5		SW	09/02/2021