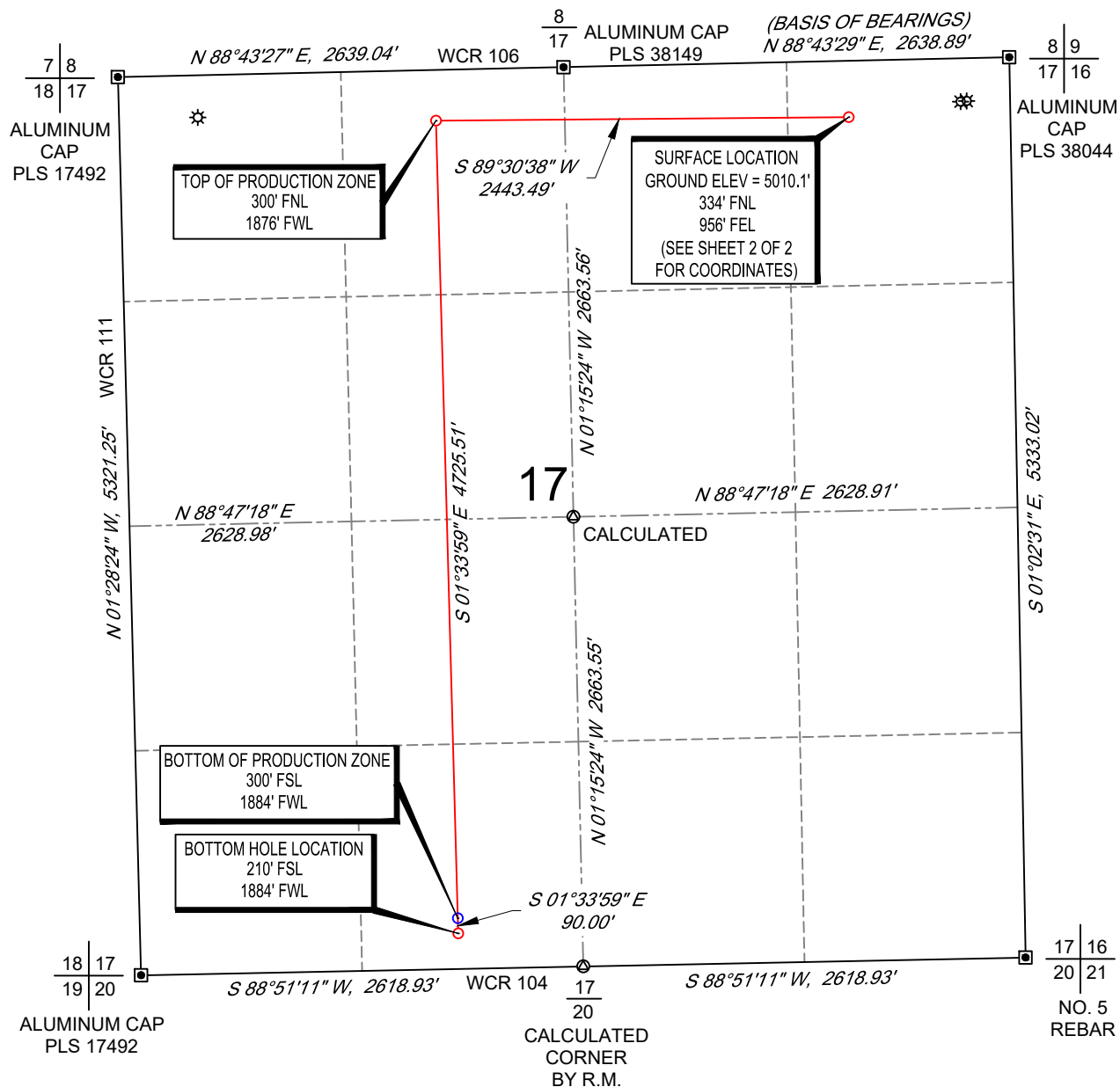


SCALE: 1" = 1000'
0' 500' 1000'

WELL LOCATION MAP

SHL NE/4 NE/4, SECTION 17, TOWNSHIP 9-N, RANGE 59-W
TPZ NE/4 NW/4, SECTION 17, TOWNSHIP 9-N, RANGE 59-W
BPZ/BHL SE/4 SW/4, SECTION 17, TOWNSHIP 9-N, RANGE 59-W
WELD COUNTY, COLORADO



NOTES

1. Horizontal (NAD 83) and vertical (NAVD 88) datum is based on the Trimble VRS Network. The lineal units of measurement are U.S. Survey Foot.
2. All directions, distances, and dimensions shown hereon are based on coordinates from the "Colorado coordinate system of 1983 north zone" (Title 38, Article 52 C.R.S.).
3. All section line dimensions shown hereon are based on field measurements of existing monuments and/or physical evidence found in the field unless otherwise indicated.
4. Physical features shown hereon are for graphical representation only.
5. See Form 2A for visible improvements within 500' of wellhead.
6. Distances to nearest section lines are measured perpendicularly.
7. This is not a land survey nor land survey plat.

PDOP Reading: 1.5 Instrument Operator: **Brent Garcia**

Date Surveyed: **03/20/2018**



SURVEYOR'S STATEMENT

The undersigned hereby states that the well location shown hereon was staked on the ground based on existing monumentation and/or physical evidence found in the field and is correct to the best of my knowledge, information and belief.



VERDAD RESOURCES
TIMBRO 1717-09H
JOB NO: 116051

MML	03/30/2018	REVISION:	
SHEET :	1 OF 2	SW	08/13/2021
FILE:LO_TIMBRO_1717_09H_REV5		SW	09/02/2021

COORDINATE TABLE



ABBREVIATIONS LEGEND:

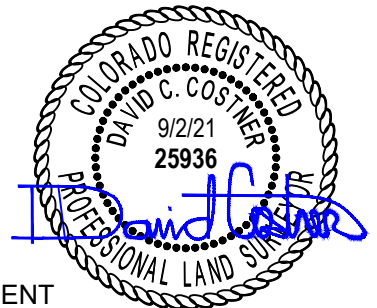
SURFACE HOLE LOCATION	(SHL)
LANDING POINT LOCATION	(LP)
TOP OF PRODUCTION ZONE	(TPZ)
BOTTOM OF PRODUCTION ZONE	(BPZ)
BOTTOM HOLE LOCATION	(BHL)
LATITUDE NAD 83	(LAT.83)
LONGITUDE NAD 83	(LONG.83)
LATITUDE NAD 27	(LAT.27)
LONGITUDE NAD 27	(LONG.27)
COLORADO COORDINATE SYSTEM OF 1983 NORTH ZONE	(SPC83)
COLORADO COORDINATE SYSTEM OF 1927 NORTH ZONE	(SPC27)

Note:

1. All (SPC83) and (SPC27) coordinate values are U.S. Survey Feet.
2. All Latitude and Longitude values are decimal degrees.

TIMBRO 1717-09H

	(LAT.83)	(LONG.83)	NORTHING EASTING		(LAT.27)	(LONG.27)	NORTHING EASTING	
			(SPC83)	(SPC83)			(SPC27)	(SPC27)
(SHL)	N40.7568749	W103.9960592	1522107.93	3416638.04	N40.7568874	W103.9955556	522105.80	2416788.63
(TPZ)	N40.7569310	W104.0048788	1522087.06	3414194.64	N40.7569436	W104.0043751	522084.93	2414345.16
(BPZ)	N40.7439614	W104.0047001	1517363.32	3414323.81	N40.7439738	W104.0041963	517361.22	2414474.39
(BHL)	N40.7437144	W104.0046967	1517273.35	3414326.27	N40.7437268	W104.0041929	517271.25	2414476.85



SURVEYOR'S STATEMENT

The undersigned hereby states that the well location shown hereon was staked on the ground based on existing monumentation and/or physical evidence found in the field and is correct to the best of my knowledge, information and belief.



VERDAD RESOURCES
TIMBRO 1717-09H
JOB NO: 116051

MML	03/30/2018	REVISION:	
SHEET :	2 OF 2	SW	08/13/2021
FILE:LO_TIMBRO_1717_09H_REV5		SW	09/02/2021