

**SUMMIT ENERGY SERVICES
H D LAUER ESTATE #1
SECTION 12, T7N, R59W, 6th P.M.
WELD COUNTY, COLORADO**

DATE:

DESCRIPTION:

[illegible]



PHOTO: VIEW OF AS-DRILLED LOCATION

CAMERA ANGLE: NORTHERLY

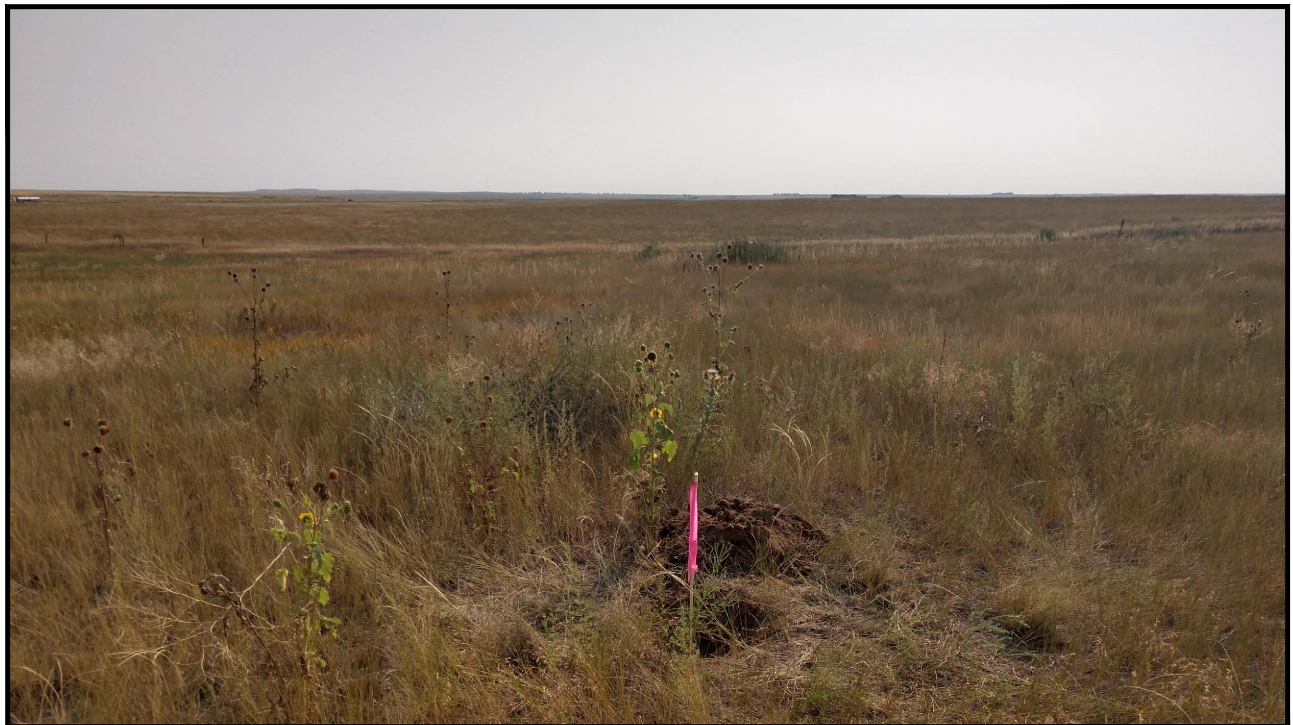


PHOTO: VIEW OF AS-DRILLED LOCATION

CAMERA ANGLE: EASTERLY

SUMMIT ENERGY SERVICES

**H D LAUER ESTATE #1
1049' FNL 1643' FWL
NE 1/4 NW 1/4, SECTION 12, T7N, R59W, 6th P.M.
WELD COUNTY, COLORADO**

TAKEN BY	N.W., O.R.	08-18-21	
DRAWN BY	J.J.	08-19-21	
LOCATION PHOTOS			PHOTO 1



UELS, LLC
Corporate Office * 85 South 200 East
Vernal, UT 84078 * (435) 789-1017



PHOTO: VIEW OF AS-DRILLED LOCATION

CAMERA ANGLE: SOUTHERLY



PHOTO: VIEW OF AS-DRILLED LOCATION

CAMERA ANGLE: WESTERLY

SUMMIT ENERGY SERVICES

**H D LAUER ESTATE #1
1049' FNL 1643' FWL
NE 1/4 NW 1/4, SECTION 12, T7N, R59W, 6th P.M.
WELD COUNTY, COLORADO**

TAKEN BY	N.W., O.R.	08-18-21	
DRAWN BY	J.J.	08-19-21	
LOCATION PHOTOS			PHOTO 2



UELS, LLC
Corporate Office * 85 South 200 East
Vernal, UT 84078 * (435) 789-1017

SUMMIT ENERGY SERVICES

H D LAUER ESTATE #1
NE 1/4 NW 1/4, SECTION 12, T7N, R59W, 6th P.M.
WELD COUNTY, COLORADO
DATE: 08-19-21 J.J.

SURFACE LOCATION										
Well Name	Footages	Lat: (NAD 83)	Long: (NAD 83)	SECTION	TOWNSHIP	RANGE	QTR./QTR.	DATE COMPLETED	PDOP	SURVEYED BY
H D LAUER ESTATE #1	1049' FNL 1643' FWL	40°35'36.86" (40.593572°)	103°55'44.78" (103.929106°)	12	7N	59W	NE/NW	8/18/2021	1.5	NATE WELCH

