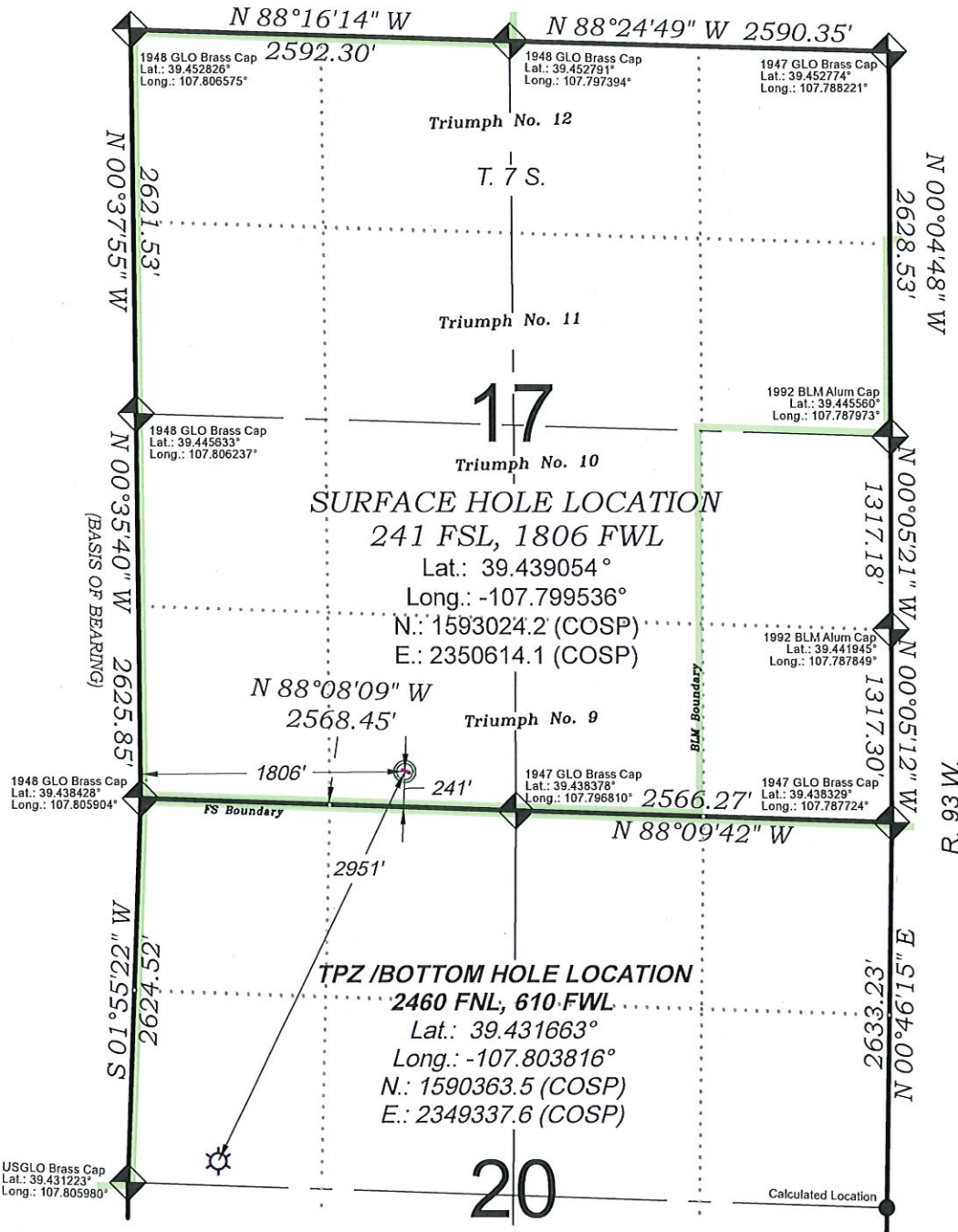


Federal WMC 512-20



0 600 1200
 GRAPHIC SCALE IN FEET
 1 INCH = 1200 FEET

EXISTING GROUND ELEV.: 8865.2
 PROPOSED PAD ELEV.: 8868.5

THERE ARE NO VISIBLE
 IMPROVEMENTS WITHIN 500'
 OF THIS LOCATION

- LEGEND -

- FIELD LOCATED SECTION MONUMENTS AS DESCRIBED
- FIELD SURVEYED WELL LOCATION
- CALCULATED BOTTOM HOLE LOCATION
- CALCULATED SECTION CORNER LOCATION

SURVEYORS STATEMENT

I, MICHAEL J. LANGHORNE, A REGISTERED LAND SURVEYOR IN THE STATE OF COLORADO DO HEREBY CERTIFY THAT THE SURVEY SHOWN HEREON WAS PREPARED UNDER MY DIRECT SUPERVISION AND HAS BEEN STAKED ON THE GROUND AS SHOWN ON THE PLAT AND CHECKING THAT THIS MAP IS A TRUE REPRESENTATION THEREOF.

Michael J. Langhorne

MICHAEL J. LANGHORNE, COLORADO REGISTRATION NO. 36572
 FOR AND ON BEHALF OF
 BOOKCLIFF SURVEY SERVICES, INC.

REVISED: 9/24/20

136 East Third Street
 Rifle, Colorado
 81650 Ph. (970)
 625-2720 Fax (970)
 625-2773



BOOKCLIFF
 Survey Services, Inc.

SURVEY DATE: 7/28/20
 MAP DATE: 9/18/20
 SCALE: 1" = 1200'
 PLAT: 1 of 7
 PROJECT: TEP Valley

REFERENCES

- 1) RE-SURVEY T. 7 S., R. 93 W., 6th P.M (BLM PLAT)
- 2) U.S.G.S. QUAD: North Mamm Peak, CO

NOTES

- 1) ELEVATIONS BASED ON N.A.V.D. 1988 PUBLISHED COORDINATES.
- 2) LATITUDES AND LONGITUDES ARE BASE ON NAD 83, PUBLISHED COORDINATES
- 3) STATE PLANE COORDINATES ARE BASED ON COLORADO CENTRAL ZONE, U.S. SURVEY FEET.
- 4) ELEVATION MASK SET TO 15"
- 5) GPS OPERATOR J. KIRKPATRICK, OBSERVED A PDOP 2.6 ON SURVEY POINT NUMBER 388.
- 6) SURFACE AND BOTTOM HOLE LOCATIONS ARE MEASURED 90° FROM SECTION LINES.

WELL LOCATION PLAT Prepared for:



TEP Rocky Mountain LLC

SE1/4 SW1/4, SECTION 17
 T. 7 S., R. 93 W. of the 6th P.M.
 GARFIELD COUNTY, COLORADO