

T4N, R68W

Section 13

Wellbore SBJ 13-7HZ

Center 1/4 Corner

Surface Location

Heel Location

Bottom Hole Location

Notes:

- Surface Location: NAD 83
- Ground Elevation = 4859.9'
- Latitude = 40.314925°
- Longitude = -104.956841°
- Latitude = 40°18'53.730"
- Longitude = -104°57'24.628"
- Heel Location: NAD 83
- Latitude = 40.316824°
- Longitude = -104.950119°
- Latitude = 40°19'00.566"
- Longitude = -104°57'00.428"
- Bottom Hole Location: NAD 83
- Latitude = 40.316708°
- Longitude = -104.998166°
- Latitude = 40°19'00.149"
- Longitude = -104°59'53.398"

Corner Locations:

- NW. COR. SEC. 13, T4N, R68W FOUND 2 1/2" ALUM. CAP ILLEGIBLE
- N. 1/4 COR. SEC. 13, T4N, R68W FOUND 2 1/2" ALUM. CAP ILLEGIBLE
- NE. COR. SEC. 13, T4N, R68W FOUND 2 1/2" ALUM. CAP P.L.S. NO. 38512
- E. 1/4 COR. SEC. 13, T4N, R68W FOUND TWO 2 1/2" ALUM. CAP REFERENCE MONUMENTS P.L.S. NO. 38065
- SE. COR. SEC. 13, T4N, R68W FOUND 2 1/2" ALUM. CAP P.L.S. NO. 34995
- S. 1/4 COR. SEC. 13, T4N, R68W FOUND 2" ALUM. CAP P.L.S. NO. 31169
- SW. COR. SEC. 13, T4N, R68W FOUND 2 1/2" ALUM. CAP L.S. NO. 23501
- W. 1/4 COR. SEC. 13, T4N, R68W FOUND 2 1/2" ALUM. CAP L.S. NO. 11989
- CENTER 1/4 COR. SEC. 13, T4N, R68W FOUND 2 1/2" ALUM. CAP L.S. NO. 11989

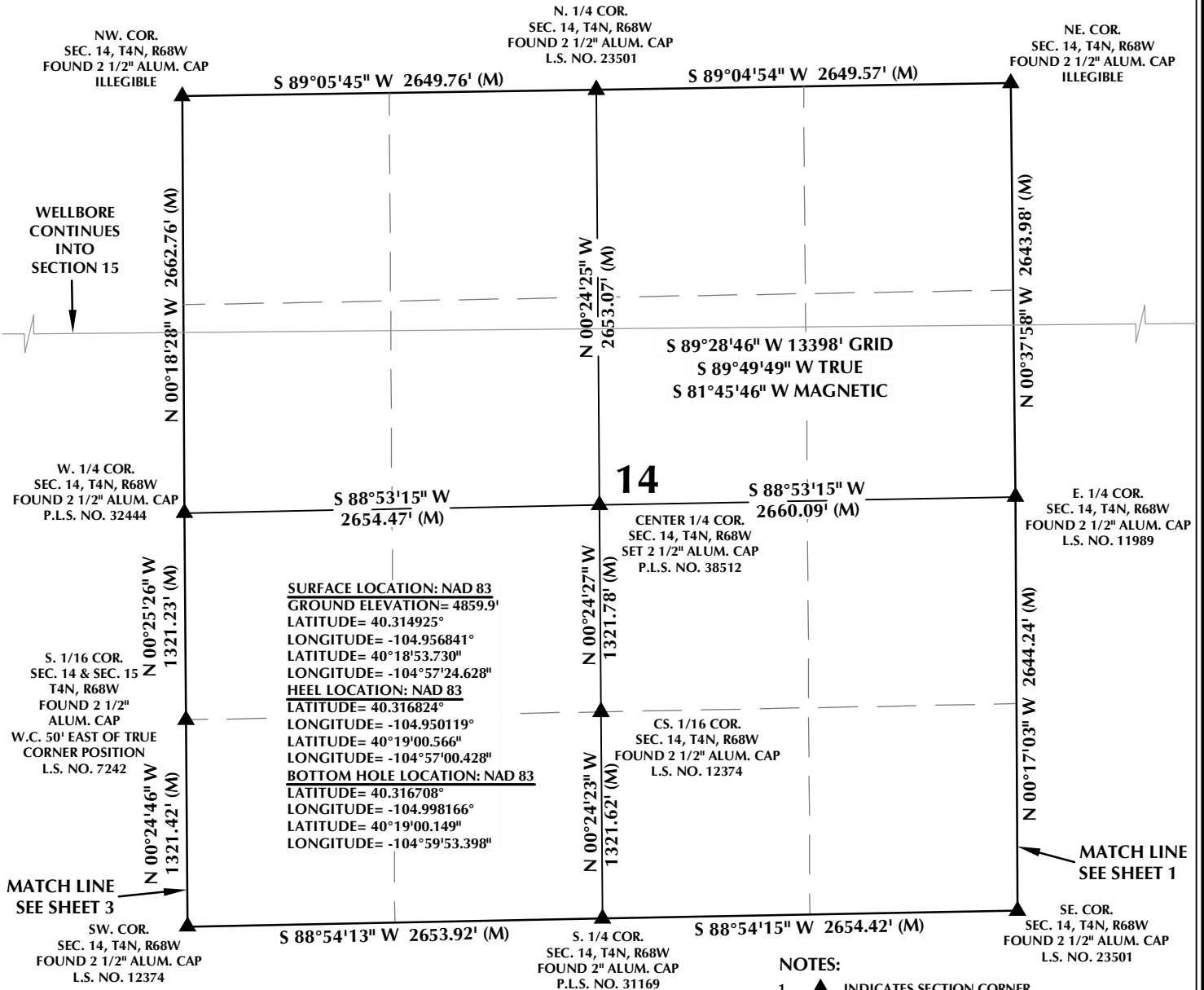
Match Line SEE SHEET 2

Wellbore Continues into Section 14

Distances and Bearings:

- N 00°37'58" W 2643.98' (M)
- S 89°25'57" W 2650.01' (M)
- S 89°25'39" W 2650.14' (M)
- N 00°27'14" W 2647.11' (M)
- N 00°27'18" W 2647.12' (M)
- S 89°29'02" W 2650.25' (M)
- S 89°30'22" W 2649.52' (M)
- N 00°17'03" W 2644.24' (M)
- S 89°27'44" W 2649.89' (M)
- S 89°27'55" W 2642.00' (M)
- N 00°26'50" W 2646.11' (M)
- N 00°27'34" W 2645.50' (M)
- 2232'
- 1082'
- 2335'
- 1547'

T4N, R68W



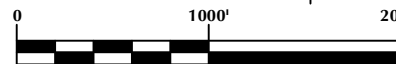
CERTIFICATE OF SURVEYOR:

THIS IS TO CERTIFY THAT THE ABOVE PLAT WAS PREPARED FROM FIELD NOTES OF ACTUAL SURVEYS MADE BY ME OR UNDER MY SUPERVISION AND THAT THE SAME ARE TRUE AND CORRECT TO THE BEST OF MY KNOWLEDGE AND BELIEF. THIS CERTIFICATE DOES NOT REPRESENT A LAND SURVEY PLAT OR IMPROVEMENT SURVEY PLAT AS DEFINED BY C.R.S. 38-51-102 AND CANNOT BE RELIED UPON TO DETERMINE OWNERSHIP.

Randall K. French
 RANDALL K. FRENCH
 PROFESSIONAL LAND SURVEYOR
 COLORADO REGISTRATION NUMBER 38512
 6/3/21

NOTICE:
 ACCORDING TO COLORADO STATE LAW YOU MUST COMMENCE A LEGAL ACTION BASED UPON ANY DEFECT IN THIS SURVEY WITHIN THREE YEARS AFTER YOU FIRST DISCOVER SUCH DEFECT. IN NO EVENT MAY ANY ACTION BASED UPON ANY DEFECT IN THIS SURVEY BE COMMENCED MORE THAN TEN YEARS FROM THE DATE ON THE CERTIFICATION SHOWN HEREON.

NOTE:
 MAGNETIC NORTH IS
 CURRENT AS OF 2/25/2020.
 MAGNETIC NORTH CHANGES
 WEST 0°06' PER YEAR.
 MAGNETIC MODEL: WMM-2020.



SCALE: 1" = 1000'

NOTES:

- ▲ INDICATES SECTION CORNER.
- INDICATES CALCULATED CORNER.
- DRAWING LATITUDE AND LONGITUDE COORDINATES ARE NAD 83 (2011)(EPOCH:2010).
- ELEVATION BASED ON NAVD88 (GEOID12B).
- BASIS OF BEARING DERIVED FROM COLORADO COORDINATE SYSTEM OF 1983 NORTH ZONE.
- ALL MEASURED DISTANCES ARE GRID.
- COMBINED SCALE FACTOR: .99972596 CALCULATED FROM THE NW. CORNER OF SECTION 13, T4N, R68W.
- OPERATOR: TRAVIS HOLLAND / PDOP = 1.5.
- SEE ADDENDUM TO WELL LOCATION CERTIFICATE FOR EXISTING IMPROVEMENTS WITHIN 500' OF THE WELL PAD.
- WELL FOOTAGES ARE MEASURED AT RIGHT ANGLES TO THE SECTION LINES.
- THE BOTTOM OF HOLE BEARS S89°28'46"W, 13398' FROM THE HEEL LOCATION.

WELL PAD - SBJ 22-13HZ

SBJ 13-7HZ
 WELL LOCATION CERTIFICATE
 2232' FNL & 1082' FWL (SWNW) (SURFACE)
 1547' FNL & 2335' FEL (SWNE) (HEEL)
 LOCATED IN SECTION 13
 1466' FNL & 185' FWL (SWNW) (BOTTOM)
 LOCATED IN SECTION 15
 T4N, R68W, 6TH P.M.
 WELD COUNTY, COLORADO

**Kerr-McGee Oil &
 Gas Onshore L.P.**
 1099 18th Street
 Denver, Colorado 80202



CONSULTING, LLC

SHERIDAN OFFICE
 1095 Saberton Avenue
 Sheridan, Wyoming 82801
 Phone 307-674-0609

LOVELAND OFFICE
 6706 North Franklin Avenue
 Loveland, Colorado 80538
 Phone 970-776-4331

DRAFTED BY: LMO	CHECKED BY: RKF	SHEET NO: 2
DATE DRAFTED: 1/14/2020	DATE SURVEYED: 2/25/2020	2 OF 3
REVISED: 6/3/21	FILE NAME: 19-45	

T4N, R68W

N. 1/4 COR.

SEC. 15, T4N, R68W
FOUND 2 1/2" ALUM. CAP
ILLEGIBLE

S 88°59'44" W
1328.33' (M)

S 89°00'19" W
1328.37' (M)

NE. COR.
SEC. 15, T4N, R68W
FOUND 2 1/2" ALUM. CAP
ILLEGIBLE

NW. COR.
SEC. 15, T4N, R68W
FOUND 3 1/4" ALUM. CAP
ILLEGIBLE

S 89°00'19" W 2656.60' (M)

E. 1/16 COR.
SEC. 10 & SEC. 15
T4N, R68W
SET 2 1/2" ALUM. CAP
P.L.S. NO. 38512

BOTTOM OF HOLE:
1466' FNL & 185' FWL

S 89°28'46" W 13398' GRID
S 89°49'49" W TRUE
S 81°45'46" W MAGNETIC

N 00°17'47" W
2662.35' (M)

N 00°18'28" W 2662.76' (M)

CE. 1/16 COR.
SEC. 15, T4N, R68W
SET 2 1/2" ALUM. CAP W.C.
15' NORTH OF TRUE
CORNER POSITION
P.L.S. NO. 38512

S 89°00'13" W
1328.81' (M)

S 89°00'54" W
1328.42' (M)

E. 1/4 COR.
SEC. 15, T4N, R68W
FOUND 2 1/2" ALUM. CAP
P.L.S. NO. 32444

W. 1/4 COR.
SEC. 15, T4N, R68W
FOUND 2 1/2" ALUM. CAP
P.L.S. NO. 38065

S 89°01'14" W
2660.46' (M)

15

CENTER 1/4 COR.
SEC. 15, T4N, R68W
FOUND 2 1/2" ALUM. CAP
P.L.S. NO. 32444

SURFACE LOCATION: NAD 83
GROUND ELEVATION= 4859.9'
LATITUDE= 40.314925°
LONGITUDE= -104.956841°
HEEL LOCATION: NAD 83
LATITUDE= 40.316824°
LONGITUDE= -104.950119°
BOTTOM HOLE LOCATION: NAD 83
LATITUDE= 40.316708°
LONGITUDE= -104.998166°
LATITUDE= 40°19'00.149"
LONGITUDE= -104°59'53.398"

S. 1/16 COR.
SEC. 14 & SEC. 15, T4N, R68W
FOUND 2 1/2" ALUM. CAP
W.C. 50' EAST OF TRUE
CORNER POSITION
L.S. NO. 7242

N 00°25'26" W
1321.23' (M)

N 00°24'46" W
1321.42' (M)

MATCH LINE
SEE SHEET 2

SW. COR.
SEC. 15, T4N, R68W
FOUND 2 1/2" ALUM. CAP
ILLEGIBLE

S 88°55'30" W 2662.47' (M)

S. 1/4 COR.
SEC. 15, T4N, R68W
FOUND 2 1/2" ALUM. CAP
L.S. NO. 12374

S 88°59'54" W 2662.63' (M)

SE. COR.
SEC. 15, T4N, R68W
FOUND 2 1/2" ALUM. CAP
L.S. NO. 12374

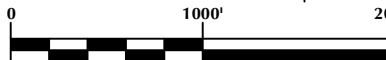
CERTIFICATE OF SURVEYOR:

THIS IS TO CERTIFY THAT THE ABOVE PLAT WAS PREPARED FROM FIELD NOTES OF ACTUAL SURVEYS MADE BY ME OR UNDER MY SUPERVISION AND THAT THE SAME ARE TRUE AND CORRECT TO THE BEST OF MY KNOWLEDGE AND BELIEF. THIS CERTIFICATE DOES NOT REPRESENT A LAND SURVEY PLAT OR IMPROVEMENT SURVEY PLAT AS DEFINED BY C.R.S. 38-51-102 AND CANNOT BE RELIED UPON TO DETERMINE OWNERSHIP.

Randall K. French
PROFESSIONAL LAND SURVEYOR
COLORADO REGISTRATION NUMBER 38512
6/3/21

NOTICE:
ACCORDING TO COLORADO STATE LAW YOU MUST COMMENCE A LEGAL ACTION BASED UPON ANY DEFECT IN THIS SURVEY WITHIN THREE YEARS AFTER YOU FIRST DISCOVER SUCH DEFECT. IN NO EVENT MAY ANY ACTION BASED UPON ANY DEFECT IN THIS SURVEY BE COMMENCED MORE THAN TEN YEARS FROM THE DATE ON THE CERTIFICATION SHOWN HEREON.

NOTE:
MAGNETIC NORTH IS
CURRENT AS OF 2/25/2020.
MAGNETIC NORTH CHANGES
WEST 0°06' PER YEAR.
MAGNETIC MODEL: WMM-2020.



SCALE: 1" = 1000'

NOTES:

- ▲ INDICATES SECTION CORNER.
- INDICATES CALCULATED CORNER.
- DRAWING LATITUDE AND LONGITUDE COORDINATES ARE NAD 83 (2011)(EPOCH:2010).
- ELEVATION BASED ON NAVD88 (GEOID12B).
- BASIS OF BEARING DERIVED FROM COLORADO COORDINATE SYSTEM OF 1983 NORTH ZONE.
- ALL MEASURED DISTANCES ARE GRID.
- COMBINED SCALE FACTOR: .99972596 CALCULATED FROM THE NW. CORNER OF SECTION 13, T4N, R68W.
- OPERATOR: TRAVIS HOLLAND / PDOP = 1.5.
- SEE ADDENDUM TO WELL LOCATION CERTIFICATE FOR EXISTING IMPROVEMENTS WITHIN 500' OF THE WELL PAD.
- WELL FOOTAGES ARE MEASURED AT RIGHT ANGLES TO THE SECTION LINES.
- THE BOTTOM OF HOLE BEARS S89°28'46"W, 13398' FROM THE HEEL LOCATION.

WELL PAD - SBJ 22-13HZ

SBJ 13-7HZ
WELL LOCATION CERTIFICATE
2232' FNL & 1082' FWL (SWNW) (SURFACE)
1547' FNL & 2335' FEL (SWNE) (HEEL)
LOCATED IN SECTION 13
1466' FNL & 185' FWL (SWNW) (BOTTOM)
LOCATED IN SECTION 15
T4N, R68W, 6TH P.M.
WELD COUNTY, COLORADO

**Kerr-McGee Oil &
Gas Onshore L.P.**
1099 18th Street
Denver, Colorado 80202



CONSULTING, LLC

SHERIDAN OFFICE
1095 Saberton Avenue
Sheridan, Wyoming 82801
Phone 307-674-0609

LOVELAND OFFICE
6706 North Franklin Avenue
Loveland, Colorado 80538
Phone 970-776-4331

DRAFTED BY: LMO	CHECKED BY: RKF	SHEET NO: 3
DATE DRAFTED: 1/14/2020	DATE SURVEYED: 2/25/2020	3 OF 3
REVISED: 6/3/21	FILE NAME: 19-45	