



**RADIAL
CEMENT BOND LOG
GAMMA RAY / CCL**

Company		SNOW CONSULTING	
Well		LUPTON #1	
Field		WILDCAT	
County		MESA	State COLORADO
Location:		API # : 05-077-08398	
Permanent Datum		SEC	TWP
Log Measured From		G.L.	RGE
Drilling Measured From		G.L.	Elevation Ft Above PD
			O'
			K.B. D.F. G.L.
Date		05-12-21	
Run Number		ONE	
Depth Driller		560'	
Present Depth Driller		560'	
Depth Logger		336'	
Bottom Logged Interval		325'	
Top Log Interval		SURFACE	
Fluid Level		FULL	
Type Fluid		WATER	
Max. Recorded Temp.			
Estimated Cement Top		SURFACE	
Equipment Number		209	
Location		GRAND JCT	
Recorded By		PACE	
Witnessed By		MR.SNOW	
Run Number		Borehole Record	
Bit		From	
To		Size	
Weight		From	
To			

<<< Fold Here >>>

All interpretations are opinions based on inferences from electrical or other measurements and we cannot and do not guarantee the accuracy or correctness of any interpretation, and we shall not, except in the case of gross or willful negligence on our part, be liable or responsible for any loss, costs, damages, or expenses incurred or sustained by anyone resulting from any interpretation made by any of our officers, agents or employees. These interpretations are also subject to our general terms and conditions set out in our current Price Schedule.

WARRIOR 7.0 SOFTWARE - Comments

THIS LOG WAS DEPTH CORRECTED TO
NOTE; MAIN PASS SCALE = 5"=100'.
CSG PSI =
SHORT JOINT AT



MAIN PASS


051221lupton#1.db

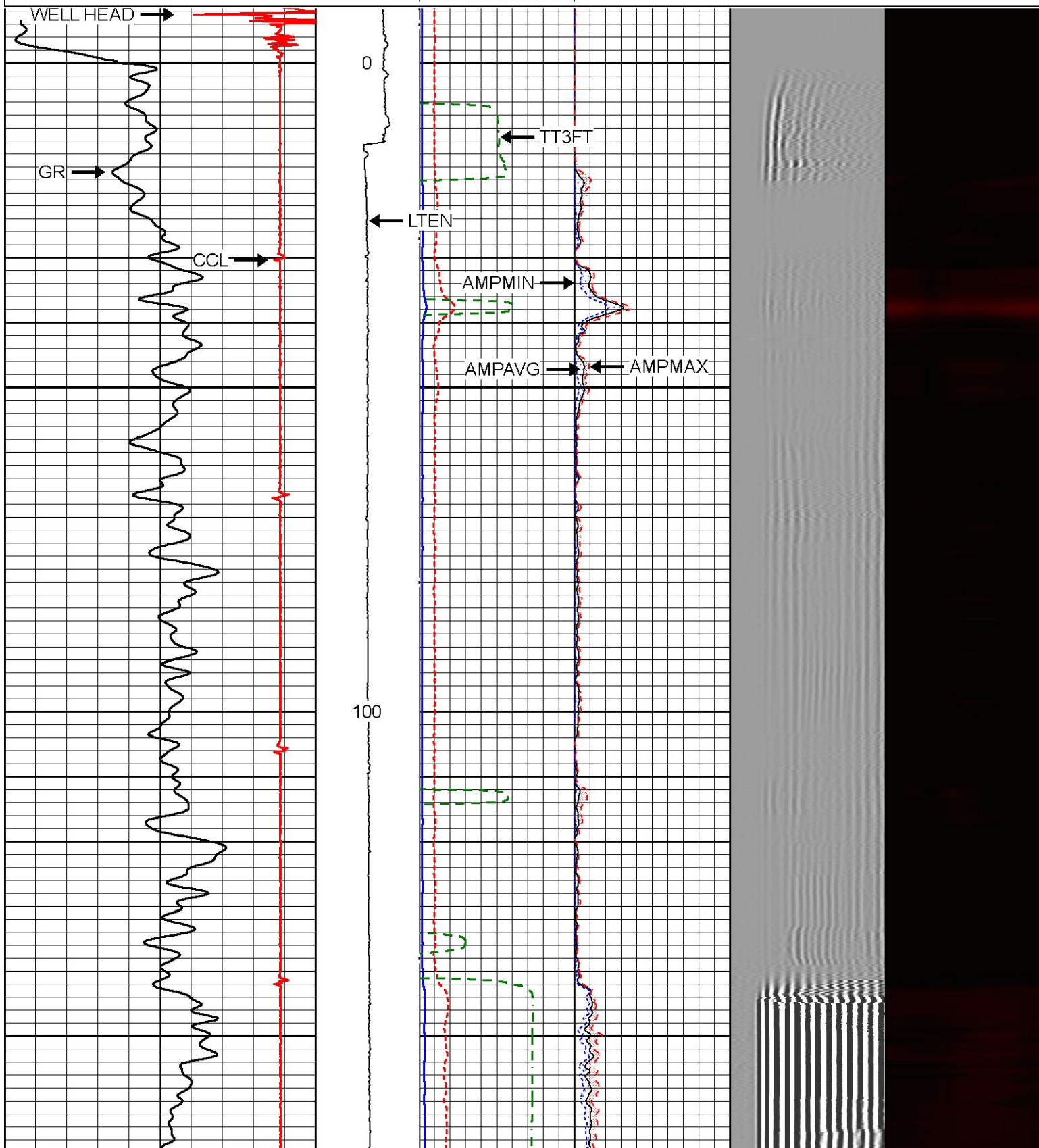
pass1.3

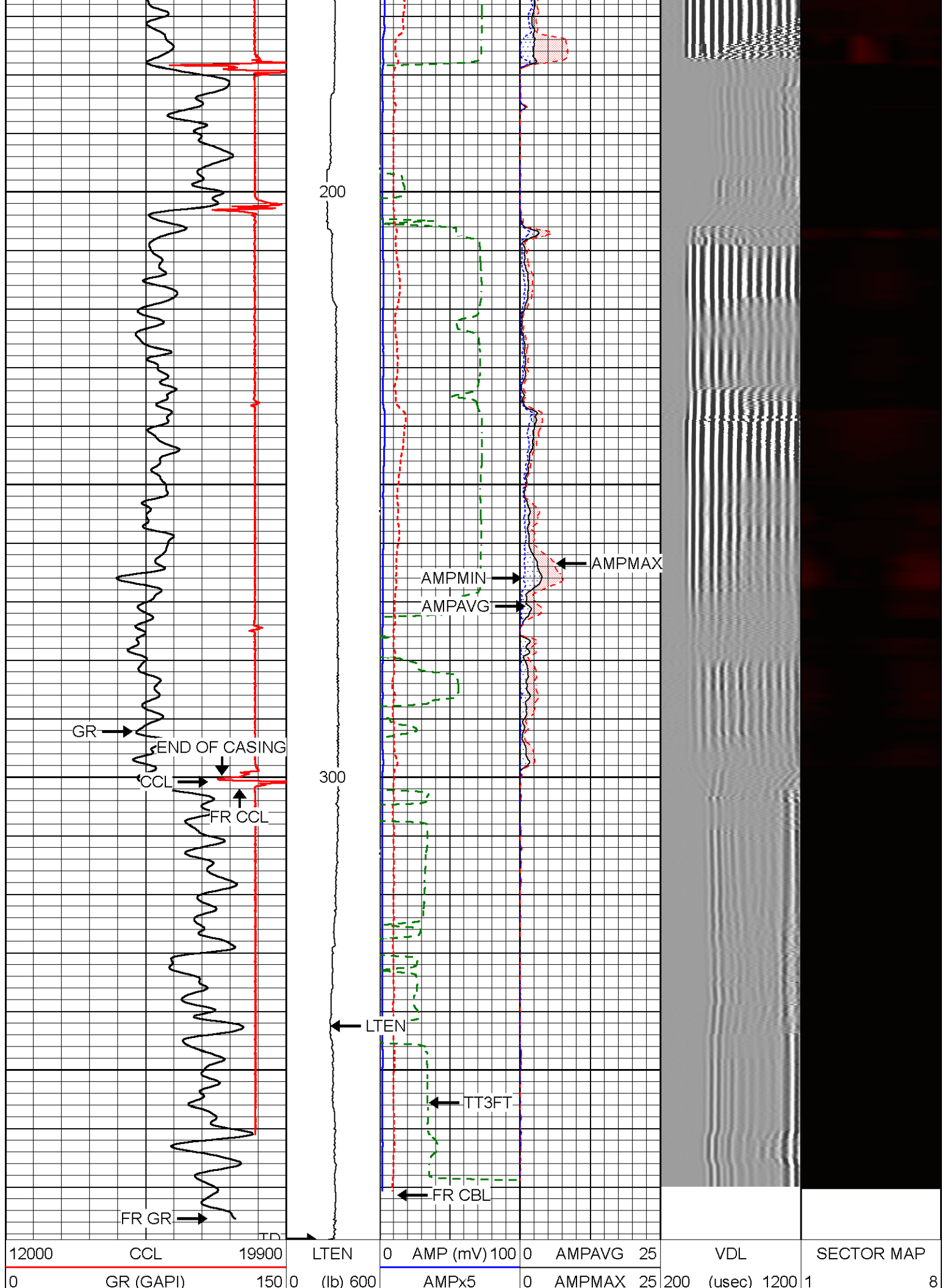
r_ax_cbl


Wed May 12 14:20:55 2021

Depth in Feet scaled 1:240

12000	CCL	19900	LTEN	0	AMP (mV) 100	0	AMPAVG 25	VDL	SECTOR MAP
0	GR (GAPI)	150	0 (lb) 600	AMPx5	0	AMPMAX 25	200 (usec) 1200	1	8
				0 (mV) 20	0	AMPMIN 25			
				TT					
				480 (usec) 180					





	0	(mV)	20	0	AMP	MIN	25	
	TT							
	480	(usec)	180					

Log Variables	DatabaseC:\ProgramData\Warrior\Data\051221lupton#1.db						
	Dataset field/well/run1/pass1.3/_vars_						

Top - Bottom							
BOREID in 7.875	BOTTEMP degF 100	CASEOD in 7	CASETHCK in 0.28	CASEWGHT lb/ft 20	MAXAMPL mV 0	MINAMPL mV 1	MINATTN db/ft 0.8
PERFS No	PPT usec 0	SRFTEMP degF 0	TDEPTH ft 0				

Variable Description		
BOREID : Borehole I.D.	CASEWGHT : Casing Weight	PERFS : Perforation Flag
BOTTEMP : Bottom Hole Temperature	MAXAMPL : Maximum Amplitude	PPT : Predicted Pipe Time
CASEOD : Casing O.D.	MINAMPL : Minimum Amplitude	SRFTEMP : Surface Temperature
CASETHCK : Casing Thickness	MINATTN : Minimum Attenuation	TDEPTH : Total Depth

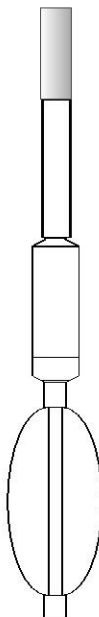
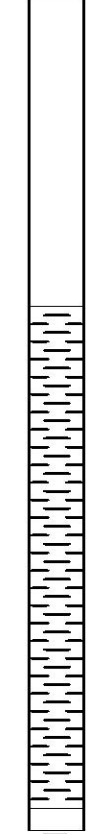
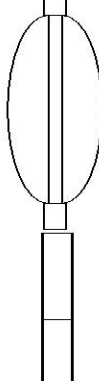
Calibration Report	
Database File	051221lupton#1.db
Dataset Pathname	pass1.3
Dataset Creation	Wed May 12 14:20:55 2021




Segmented Cement Bond Log Calibration Report			
Serial Number:		10009897	
Tool Model:		004	
Calibration Casing Diameter:		5.500	in
Calibration Depth:		0.000	ft


Master Calibration, performed Tue May 11 14:18:06 2021:							
	Raw (v)		Calibrated (mv)		Results		
	Zero	Cal	Zero	Cal	Gain	Offset	
3FT	-0.003	0.743	2.000	71.921	93.754	2.240	
5FT	0.001	0.318	2.000	71.921	220.925	1.706	
S1	0.010	0.755	0.000	100.000	134.153	-1.284	
S2	0.007	0.736	0.000	100.000	137.133	-0.907	
S3	0.008	0.675	0.000	100.000	150.056	-1.227	
S4	0.008	0.660	0.000	100.000	153.192	-1.167	
S5	0.008	0.688	0.000	100.000	146.959	-1.173	
S6	0.008	0.744	0.000	100.000	135.818	-1.049	
S7	0.007	0.788	0.000	100.000	128.109	-0.946	
S8	0.007	0.786	0.000	100.000	128.395	-0.936	

Calibration Report	
Serial Number:	10009897
Tool Model:	004
Performed:	
Reference (degF)	Reading (v)

Low:	0.000	Reference (degF)	0.000	Reading (°)
High:	1.000		0.000	
	Gain = 1.000		1.000	
			Offset = 0.000	

Sensor	Offset (ft)	Schematic	Description	Length (ft)	O.D. (in)	Weight (lb)
CCL	17.63		CHD-AES (000001) Cable Head	1.04	1.69	2.00
			XTU-002 (10008325) Crossover Ultrawire Toolbus To Ultralink	1.58	1.69	6.50
			CCL-028 (1036) CCL UW 3 1/8" SONDEX	1.61	3.13	36.00
			PRC-AES-SDX-2 (1012) AES-SDX Adjustable Bowspring Centralizer with 19" sprgs	2.75	2.50	60.00
CBLROT	10.03		RBT-004 (10009897) Radial Bond Tool (UW 3 1/8)	9.48	3.13	140.00
CBLTEMP	10.03					
WVFS8	10.03					
WVFS7	10.03					
WVFS6	10.03					
WVFS5	10.03					
WVFS4	10.03					
WVFS3	10.03					
WVFS2	10.03					
WVFS1	10.03					
WVF3FT	10.03					
WVF5FT	9.03					
CBLTEMP	4.89					
		PRC-AES-SDX-2 (1013) AES-SDX Adjustable Bowspring Centralizer with 19" sprgs	2.75	2.50	60.00	
GR	0.72		PGR-020 (10009364) Production Gamma Ray	1.92	1.69	9.50
HVOLTX	0.00					
ITEMPX	0.00					

TSTAMP	0.00			 BUL-006 (212965) Bullnose Terminator	0.22	1.69	1.20
Dataset: 051221lupton#1.db: field/well/run1/pass1.3 Total length: 21.35 ft Total weight: 315.20 lb O.D.: 3.13 in							

		Company	SNOW CONSULTING
		Well	LUPTON #1
		Field	WILDCAT
		County	MESA
		State	COLORADO