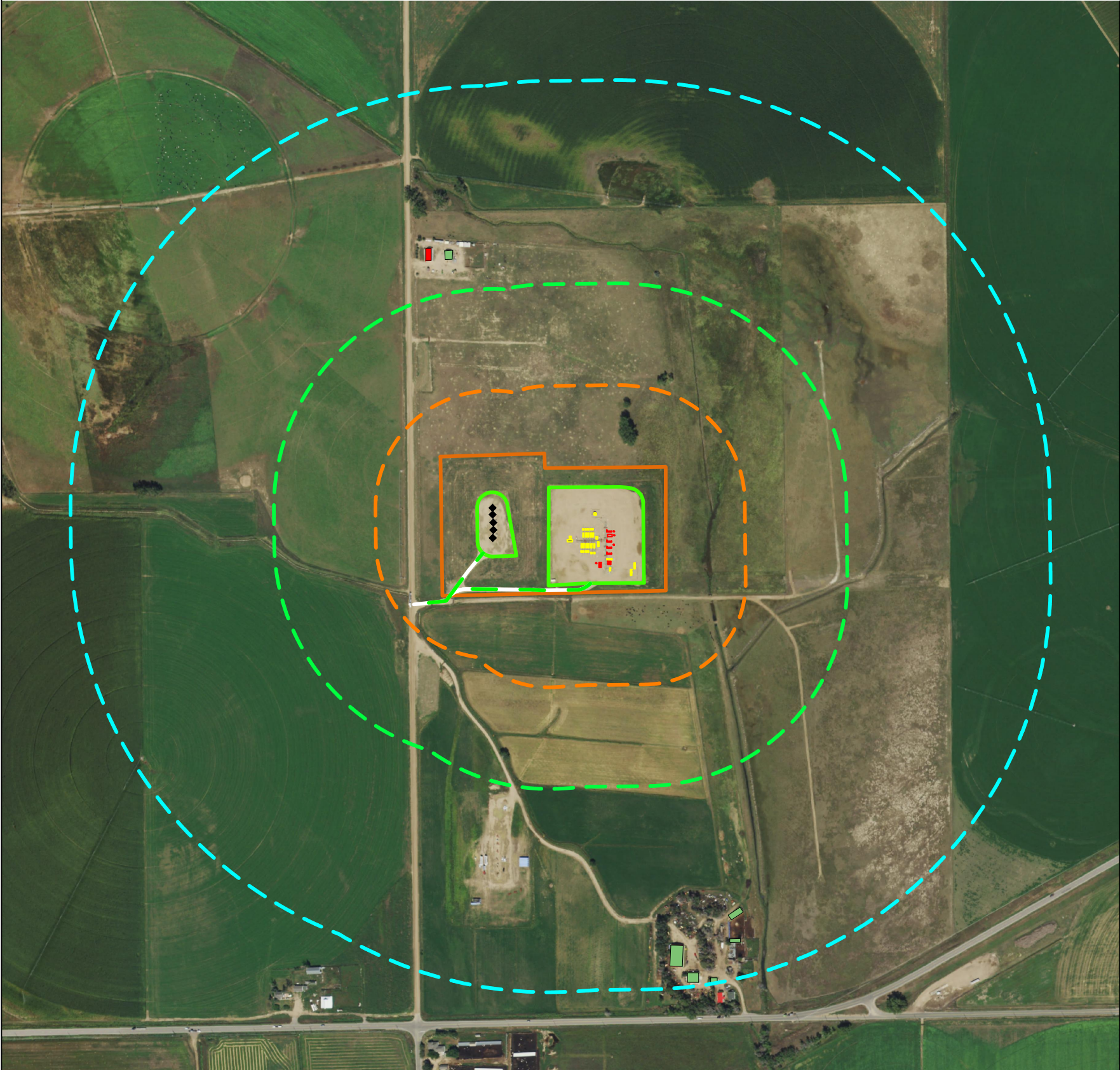


LAPP A15-655 MULTI
CULTURAL FEATURES MAP



CULTURAL TABLE: (NUMBER OF FEATURES FOUND WITHIN EACH RADIUS AS MEASURED FROM THE WORKING PAD SURFACE)

	RESIDENTIAL BUILDING UNITS	HIGH OCCUPANCY BUILDING UNITS	SCHOOL PROPERTIES	SCHOOL FACILITIES	DESIGNATED OUTSIDE ACTIVITY AREAS
0-500 FEET	0	0	0	0	0
501-1,000 FEET	0	0	0	0	0
1,001-2,000 FEET	1	0	0	0	0
2,001-5,280 FEET	18	0	0	0	0

CULTURAL DISTANCES:

	From Well	From Equipment	From Working Pad Surface
BUILDING	±1238' N	±1430' NW	±1162' NW
RESIDENTIAL BUILDING UNIT	±1253' N	±1478' NW	±1176' NW
HIGH OCCUPANCY BUILDING UNIT	+5280' SW	+5280' SW	+5280' SW
DESIGNATED OUTSIDE ACTIVITY AREA	±5280' SW	±5280' SW	±5280' SW
PUBLIC ROAD	±385' W	±752' W	±310' W
ABOVE GROUND UTILITY	±2414' S	±2215' S	±2172' S
RAILROAD	+5280' S	+5280' S	+5280' S
PROPERTY LINE	±279' S	±83' S	±40' S
SCHOOL FACILITY	+5280' NW	+5280' NW	+5280' NW
SCHOOL PROPERTY LINE	+5280' NW	+5280' NW	+5280' NW
CHILD CARE CENTER	+5280' SW	+5280' SW	+5280' SW
DIC BOUNDARY	+5280' SW	+5280' SW	+5280' SW

DATA SOURCE:
AERIAL IMAGERY: NAIP 2019
WATER WELLS: COLORADO DWR
NHD: USGS

PUBLICLY AVAILABLE DATA SOURCES HAVE NOT
BEEN INDEPENDENTLY VERIFIED BY ASCENT.

DISCLAIMER:
THIS PLOT DOES NOT REPRESENT A MONUMENTED LAND SURVEY AND SHOULD NOT BE RELIED UPON TO DETERMINE BOUNDARY LINES.
PROPERTY OWNERSHIP OR OTHER PROPERTY INTERESTS, IF DEPICTED HAVE NOT BEEN FIELD VERIFIED AND MAY BE BASED
UPON PUBLICLY AVAILABLE DATA THAT ALSO HAS NOT BEEN INDEPENDENTLY VERIFIED.

REFERENCE LOCATION

****LAPP A15-655****

LAT: 40.485870° N
LONG: 104.506390° W
ELEVATION: 4668'
2529' FSL & 400' FWL
PDOP: 1.3
GPS OPERATOR: Brian Rottinghaus

SHEET 2 OF 2

CURRENT SURFACE USE: RANGELAND
FUTURE SURFACE USE: RANGELAND

FIELD
DATE:
08-20-15

DRAWING
DATE:
08-16-21

DRAWN BY:
LNJ

CHECKED BY:
IJM

SITE NAME:
LAPP A15-655 MULTI
SURFACE LOCATION:
NW 1/4 SW 1/4 SEC. 13, T6N, R64W, 6TH P.M.
WELD COUNTY, COLORADO

LEGEND:

◆ = EXISTING WELL
--- = EXISTING ACCESS ROAD

--- = WORKING PAD SURFACE
--- = OIL & GAS LOCATION
--- = RESIDENTIAL BUILDING UNIT
--- = BUILDING

--- = 500' RADIUS FROM WPS
--- = 1000' RADIUS FROM WPS
--- = 2000' RADIUS FROM WPS

--- = PROPOSED EQUIPMENT
--- = EXISTING EQUIPMENT

PREPARED FOR: