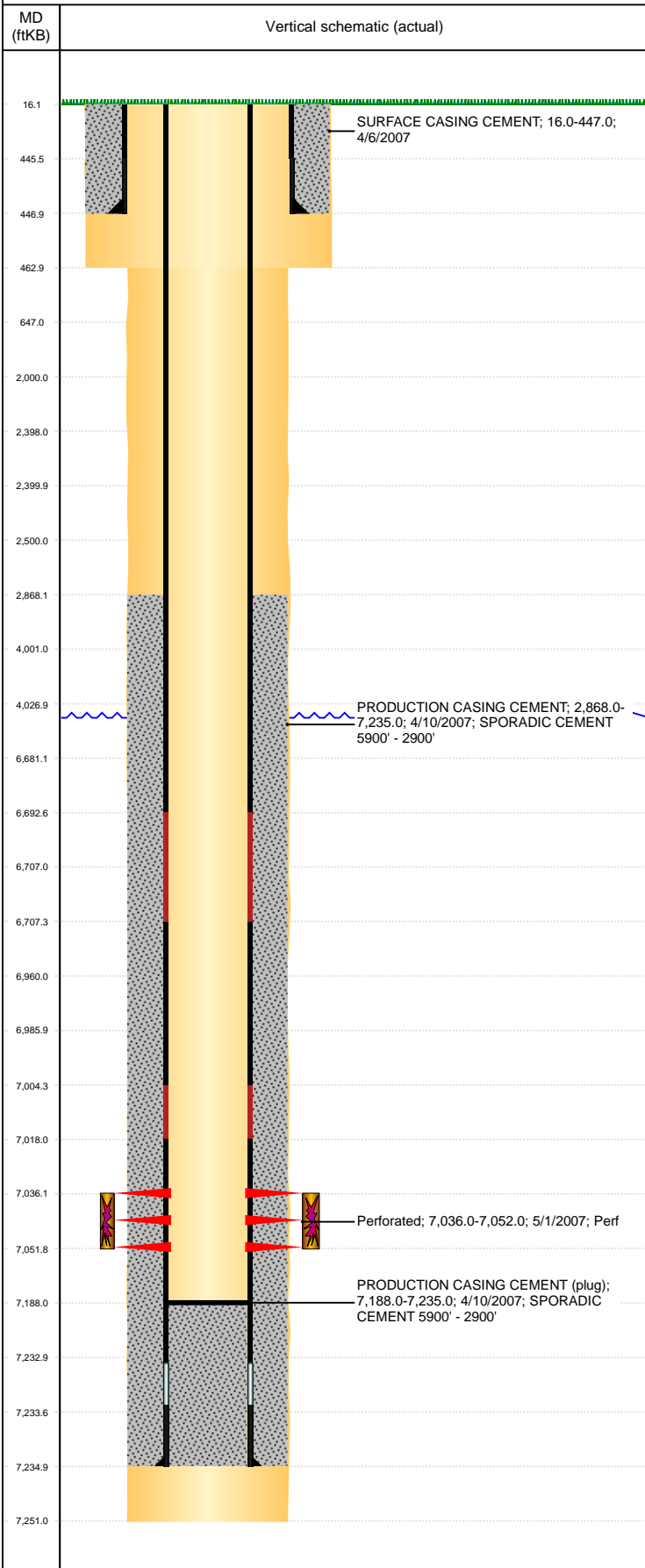


Well Name: MCCLELLAN 03-35

VERTICAL, ORIGINAL HOLE, 7/29/2021 12:39:45 PM



Well Header									
API 05-123-24833		Business Unit DJ BASIN			District 15		Well Config VERTICAL		
KB - GL / MSL (ft... 16.00		Spud Date 4/5/2007		P & A Date		Well Production Status SI			SoRT No
Comment NO TUBING INFO GIVEN. FIELD OPS NOTICE- FLOWLINES ABANDONED, RCVD 6/29/17. STATE SHOWS SHUT IN SINCE APR 2017.									
Surface Location (Congressional)									
Qtr 3 SW	Qtr 4 SW	Section 3	Twnshp 4	Twnsh... N	Range 65	Rng E/... W	Actual Latitude (°) 40.33786000	Actual Longitude (°) -104.65451000	
Wellbore Sections									
Section Des			Size (in)			Act Top, MD (ftKB)		Act Btm, MD (ftKB)	
SURFACE			12 1/4			16		463	
PRODUCTION			7 7/8			463		7,251	
Casing Strings									
Csg Des		Run Date		OD (in)	Wt/Len (lb/ft)	Grade	Top, MD (ftKB)	MD (ftKB)	
Surface		4/6/2007		8 5/8	24.00	?	16.0	447.0	
Production		4/10/2007		4 1/2	11.60	M-80	16.0	7,235.0	
Cement									
Des				Start Date		Top (ftKB)		Btm (ftKB)	
SURFACE CASING CEMENT				4/6/2007		16.0		447.0	
PRODUCTION CASING CEMENT				4/10/2007		2,868.0		7,235.0	
Zone Statuses									
Zone Name		Status Date	Status	Fluid Type	Job			Prod Method	
CODELL		5/3/2010	PR	Water				Flowing	
CODELL		3/10/2017	SI						
Perforation Data									
Linked Zone		Bnch/Stg	Entered Shot Total	Top (ftKB)		Btm (ftKB)		Date	
CODELL, ORIGINAL HOLE			64	7,036.00		7,052.00		5/1/2007	
Stimulation Intervals									
Zone			Start Date			Top (ftKB)		Btm (ftKB)	
CODELL, ORIGINAL HOLE			5/2/2007			7,036.0		7,052.0	
Other In Hole									
Run Date		Des				OD (in)	Top (ftKB)	Btm (ftKB)	
Logs									
Date		Type				Top, MD (ftKB)		Btm, MD (ftKB)	
4/10/2007		COMPENSATED DENSITY				3,540.0		7,221.0	
4/10/2007		INDUCTION				447.0		7,241.0	
4/30/2007		CEMENT BOND				2,750.0		7,186.0	
Plug Back Total Depths									
Date		Type		Com				Depth (ftKB)	
4/10/2007		FLOAT COLLAR		TOP OF FLOAT COLLAR				7,233.0	
4/30/2007		FILL		DEPTH LOGGER ON CBL				7,188.0	