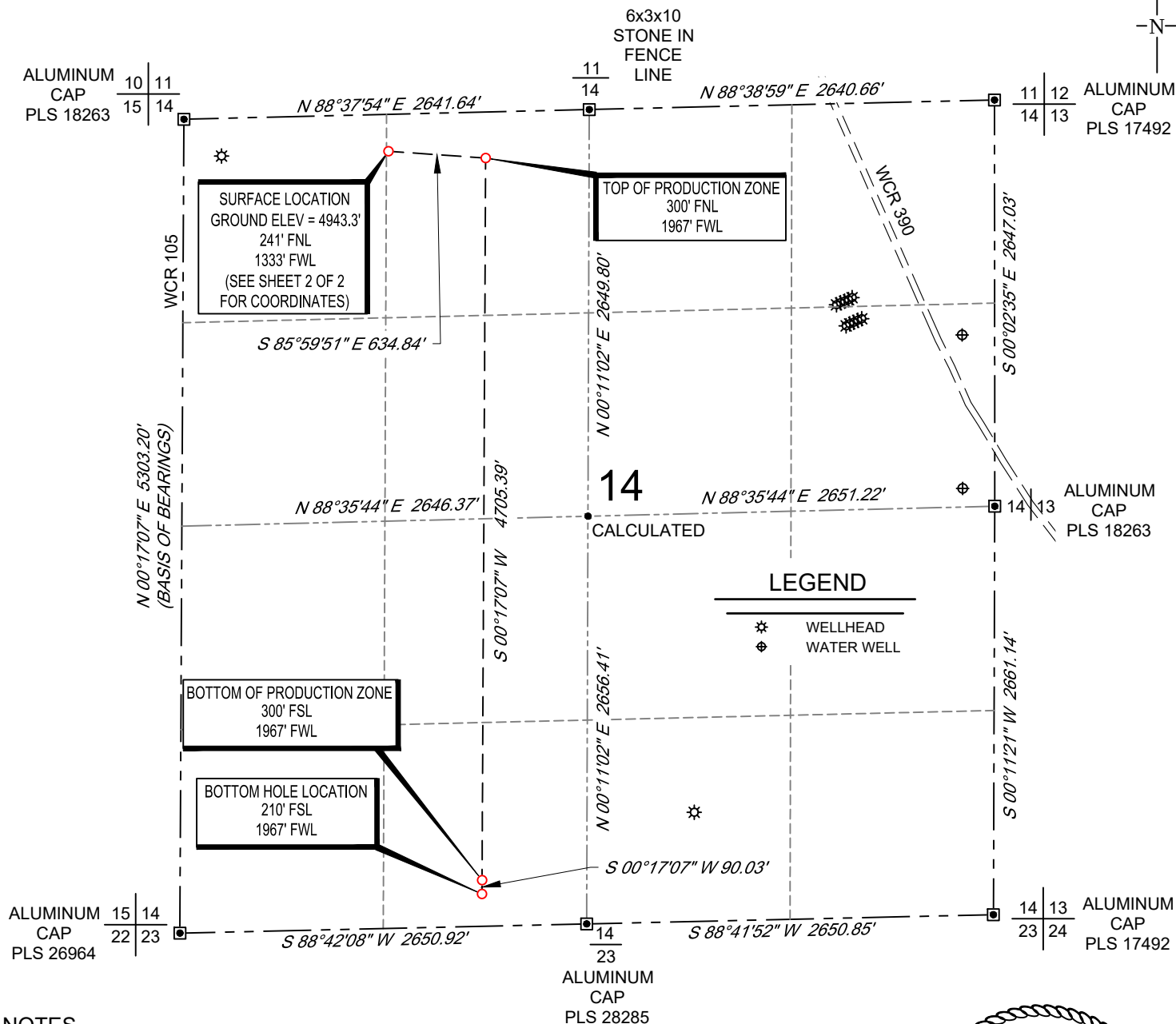


SCALE: 1" = 1000'

0' 500' 1000'

# WELL LOCATION MAP

SHL NE/4 NW/4, SECTION 14, TOWNSHIP 8-N, RANGE 60-W  
 TPZ NE/4 NW/4, SECTION 14, TOWNSHIP 8-N, RANGE 60-W  
 BPZ / BHL SE/4 SW/4, SECTION 14, TOWNSHIP 8-N, RANGE 60-W  
 WELD COUNTY, COLORADO



## NOTES

1. Horizontal (NAD 83) and vertical (NAVD 88) datum is based on the Trimble VRS Network or OPUS Solution. The lineal units of measurement are U.S. Survey Foot.
2. All directions, distances, and dimensions shown hereon are based on coordinates from the "Colorado coordinate system of 1983 north zone" (article 52 of title 38, C.R.S.).
3. All section line dimensions shown hereon are based on field measurements of existing monuments and/or physical evidence found in the field unless otherwise indicated.
4. Physical features shown hereon are for graphical representation only.
5. See Form 2A, if applicable for visible improvements within 500' of wellhead.
6. Distances to nearest section lines are measured perpendicularly.
7. This is not a land survey nor land survey plat.

PDOP Reading: 1.5 Instrument Operator: **Brent Garcia**  
 Date Surveyed: **05/24/2018**

## SURVEYOR'S STATEMENT

The undersigned hereby states that the well location shown hereon was staked on the ground based on existing monumentation and/or physical evidence found in the field and is correct to the best of my knowledge, information and belief.



VERDAD RESOURCES  
 SCHNEIDER 1414-01H  
 JOB NO. 117800

JLS	06/11/2018	REVISION:	
SHEET :	1 OF 2	INT	DATE
FILE:LO_SCHNEIDER_1414_01H_REV5	PAV	07/22/2021	



# COORDINATE TABLE



## ABBREVIATIONS LEGEND:

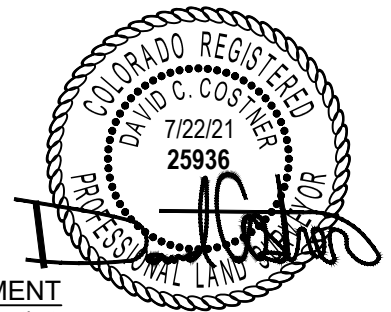
SURFACE HOLE LOCATION	(SHL)
LANDING POINT LOCATION	(LP)
TOP OF PRODUCTION ZONE	(TPZ)
BOTTOM OF PRODUCTION ZONE	(BPZ)
BOTTOM HOLE LOCATION	(BHL)
LATITUDE NAD 83	(LAT.83)
LONGITUDE NAD 83	(LONG.83)
LATITUDE NAD 27	(LAT.27)
LONGITUDE NAD 27	(LONG.27)
COLORADO COORDINATE SYSTEM OF 1983 NORTH ZONE	(SPC83)
COLORADO COORDINATE SYSTEM OF 1927 NORTH ZONE	(SPC27)

## Note:

1. All (SPC83) and (SPC27) coordinate values are U.S. Survey Feet.
2. All Latitude and Longitude values are decimal degrees.

## SCHNEIDER 1414-01H

	(LAT.83)	(LONG.83)	NORTHING EASTING		(LAT.27)	(LONG.27)	NORTHING EASTING	
			(SPC83)	(SPC83)			(SPC27)	(SPC27)
(SHL)	N40.6691018	W104.0625527	1489828.47	3398737.31	N40.6691152	W104.0620481	489827.08	2398887.83
(TPZ)	N40.6689519	W104.0602726	1489784.16	3399370.60	N40.6689653	W104.0597681	489782.76	2399521.14
(BPZ)	N40.6560394	W104.0606324	1485078.83	3399347.18	N40.6560528	W104.0601277	485077.51	2399497.78
(BHL)	N40.6557923	W104.0606393	1484988.79	3399346.73	N40.6558057	W104.0601345	484987.48	2399497.33



## SURVEYOR'S STATEMENT

The undersigned hereby states that the well location shown hereon was staked on the ground based on existing monumentation and/or physical evidence found in the field and is correct to the best of my knowledge, information and belief.



VERDAD RESOURCES  
SCHNEIDER 1414-01H  
JOB NO. 117800

JLS	06/11/2018	REVISION:	
SHEET :	2 OF 2	INT	DATE
FILE:LO_SCHNEIDER_1414_01H_REV5	PAV	07/22/2021	