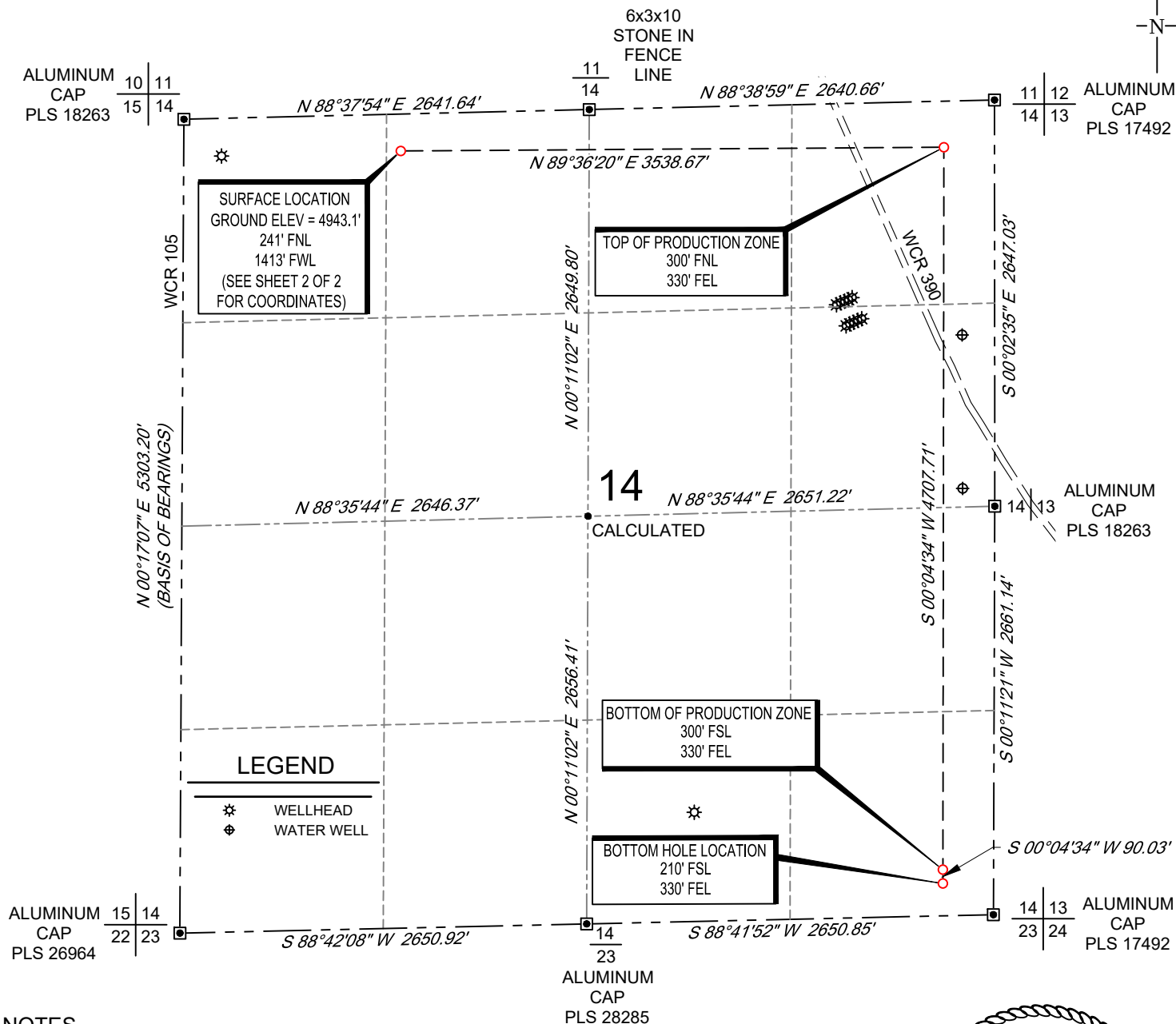


SCALE: 1" = 1000'

0' 500' 1000'

WELL LOCATION MAP

SHL NE/4 NW/4, SECTION 14, TOWNSHIP 8-N, RANGE 60-W
 TPZ NE/4 NE/4, SECTION 14, TOWNSHIP 8-N, RANGE 60-W
 BPZ / BHL SE/4 SE/4, SECTION 14, TOWNSHIP 8-N, RANGE 60-W
 WELD COUNTY, COLORADO



NOTES

- Horizontal (NAD 83) and vertical (NAVD 88) datum is based on the Trimble VRS Network or OPUS Solution. The lineal units of measurement are U.S. Survey Foot.
- All directions, distances, and dimensions shown hereon are based on coordinates from the "Colorado coordinate system of 1983 north zone" (article 52 of title 38, C.R.S.).
- All section line dimensions shown hereon are based on field measurements of existing monuments and/or physical evidence found in the field unless otherwise indicated.
- Physical features shown hereon are for graphical representation only.
- See Form 2A, if applicable for visible improvements within 500' of wellhead.
- Distances to nearest section lines are measured perpendicularly.
- This is not a land survey nor land survey plat.

PDOP Reading: 1.5 Instrument Operator: **Brent Garcia**

Date Surveyed: **05/24/2018**

SURVEYOR'S STATEMENT

The undersigned hereby states that the well location shown hereon was staked on the ground based on existing monumentation and/or physical evidence found in the field and is correct to the best of my knowledge, information and belief.



VERDAD RESOURCES
SCHNEIDER 1414-06H
JOB NO. 117800

JLS	06/11/2018	REVISION:	
SHEET :	1 OF 2	INT	DATE
FILE:LO_SCHNEIDER_1414_06H_REV0	PAV	07/22/2021	



COORDINATE TABLE



ABBREVIATIONS LEGEND:

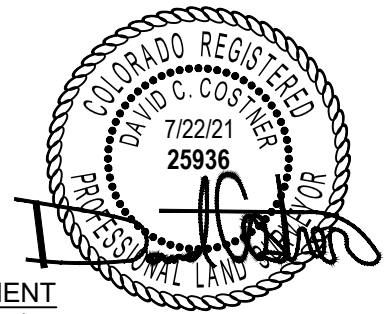
SURFACE HOLE LOCATION	(SHL)
LANDING POINT LOCATION	(LP)
TOP OF PRODUCTION ZONE	(TPZ)
BOTTOM OF PRODUCTION ZONE	(BPZ)
BOTTOM HOLE LOCATION	(BHL)
LATITUDE NAD 83	(LAT.83)
LONGITUDE NAD 83	(LONG.83)
LATITUDE NAD 27	(LAT.27)
LONGITUDE NAD 27	(LONG.27)
COLORADO COORDINATE SYSTEM OF 1983 NORTH ZONE	(SPC83)
COLORADO COORDINATE SYSTEM OF 1927 NORTH ZONE	(SPC27)

Note:

1. All (SPC83) and (SPC27) coordinate values are U.S. Survey Feet.
2. All Latitude and Longitude values are decimal degrees.

SCHNEIDER 1414-06H

	(LAT.83)	(LONG.83)	NORTHING EASTING		(LAT.27)	(LONG.27)	NORTHING EASTING	
			(SPC83)	(SPC83)			(SPC27)	(SPC27)
(SHL)	N40.6691034	W104.0622643	1489830.38	3398817.29	N40.6691168	W104.0617597	489828.99	2398967.81
(TPZ)	N40.6690121	W104.0495085	1489854.74	3402355.87	N40.6690253	W104.0490039	489853.29	2402506.50
(BPZ)	N40.6560923	W104.0498085	1485147.03	3402349.63	N40.6561055	W104.0493038	485145.67	2402500.33
(BHL)	N40.6558452	W104.0498143	1485057.00	3402349.51	N40.6558584	W104.0493095	485055.65	2402500.21



SURVEYOR'S STATEMENT

The undersigned hereby states that the well location shown hereon was staked on the ground based on existing monumentation and/or physical evidence found in the field and is correct to the best of my knowledge, information and belief.



VERDAD RESOURCES
SCHNEIDER 1414-06H
JOB NO. 117800

JLS	06/11/2018	REVISION:	
SHEET :	2 OF 2	INT	DATE
FILE:LO_SCHNEIDER_1414_06H_REV0	PAV	07/22/2021	