



July 26, 2021

Mr. Jason Davidson
Great Western Operating Company, LLC
1001 17th Street, Suite 2000
Denver, Colorado 80202

**RE: Site Characterization Results and Subsurface Investigation Workplan
Kielian 2-2 Battery
COGCC Remediation Project #17902
Weld County, Colorado**

Mr. Davidson,

Entrada Consulting Group, Inc. (Entrada) has prepared this report for Great Western Operating Company, LLC (GWOC) to present the results of recent test pit soil sampling activities and propose a drilling site assessment to further investigate the remaining extent of impact to soil and groundwater at the Kielian 2-2 tank battery (Facility ID# 463941) (Site) located in Weld County, Colorado. The Site is located approximately 0.1 miles west of Weld County Road 23 and 0.3 miles north of the town of Milliken, Colorado. The center location coordinates of the Kielian 2-2 battery are 40.335401° latitude and -104.850186° longitude. A general location map is provided as Figure 1.

SITE HISTORY

On May 5, 2021, during facility closure sampling activities, soil and groundwater impacts were observed in test pits advanced to groundwater below the partially buried produced water tank and below the horizontal separator. The historic release was reported under Form 19 document number 402681921 submitted on May 6, 2021 and approved on May 10, 2021. Details of the sampling were discussed in the Entrada report titled *Additional Site Characterization Workplan*, dated June 7, 2021, and submitted to the Colorado Oil and Gas Conservation Commission (COGCC) in supplemental Form 27 document number 402708417.

TEST PIT SAMPLING ACTIVITIES

Based on the results of the initial sampling, on June 7 and 8, 2021, eight additional test pits (TP3 through TP10) were excavated to investigate the extent of hydrocarbon impact. In each test pit, soil was field screened at 2-foot vertical intervals from ground surface to a total depth of approximately 10 feet below ground surface (ft-bgs) for evidence of hydrocarbon impact such as staining, odor, and elevated volatile organic compound (VOC) concentrations measured by a photo-ionization detector (PID). General lithology observed in the test pits was similar across the Site and consisted of organic rich silty clay from ground surface to approximately 6 ft-bgs underlain by well graded gravelly sand to total depth. Groundwater was observed at approximately 5 feet to 7 ft-bgs across the Site. Staining, odor, and elevated VOC concentrations were noted in the saturated gravelly sand in all test pits except TP5. At test pits TP3 through TP6, TP9, and TP10, one soil sample was collected from the interval located directly above groundwater saturation. The soil samples were placed into laboratory provided containers, placed on ice, and delivered under standard chain of custody protocol to Origins Laboratory in Denver, Colorado for the following analysis:

- Benzene, toluene, ethylbenzene, total xylenes (BTEX), 1,2,4-trimethylbenzene (TMB), 1,3,5-TMB and total petroleum hydrocarbons (TPH)-gasoline range organics (GRO) by Environmental Protection Agency (EPA) Method 8260D
- TPH-diesel range organics (DRO) and TPH oil range organics (ORO) by EPA Method 8015D; and
- Acenaphthene, anthracene, chrysene, naphthalene, and pyrene by EPA Method 8270D.

The test pit locations, soil sample locations, and analytical results exceeding their respective Protection to Groundwater Soil Screening Levels (GWSSLs) are provided on Figure 2. All analytical results collected from the Site to date are summarized in Table 1 through Table 3. A photographic log is provided as Attachment A, and laboratory analytical reports are provided as Attachment B.

Soil Analytical Results

Analytical results with concentrations above their respective COGCC Table 915-1 GWSSLs are summarized below.

- Benzene concentrations in samples SS6-6, SS8-6, and SS12-4 were reported above the Table 915-1 GWSSL of 0.0026 milligrams per kilogram (mg/kg) with concentrations of 0.744 mg/kg, 0.00406 mg/kg, and 0.0490 mg/kg, respectively.
- Ethylbenzene in sample SS6-6 was reported above the Table 915-1 GWSSL of 0.78 mg/kg with a concentration of 2.62 mg/kg.

- Naphthalene in samples SS7-6, SS11-6, and SS12-4 was reported above the Table 915-1 GWSSL of 0.0038 mg/kg with concentrations of 0.00886 mg/kg, 0.566 mg/kg, and 0.0181 mg/kg, respectively.
- 1,2,4-TMB in samples SS6-6 and SS12-4 was reported above the Table 915-1 GWSSL of 0.0081 mg/kg with concentrations of 27.5 mg/kg and 0.377 mg/kg, respectively.
- TPH in sample SS6-6 was reported above the Table 915-1 GWSSL of 500 mg/kg with a concentration of 2,285 mg/kg.

All other soil analytical results submitted for analysis were reported at concentrations compliant with applicable COGCC Table 915-1 GWSSLs.

TEMPORARY PIEZOMETER INSTALLATION AND HYDROGEOLOGY

Prior to backfilling test pits TP3 through TP7, temporary 2-inch PVC piezometers were installed to allow collection of depth to water (DTW) measurements to calculate the groundwater flow direction and hydraulic gradient. On June 8, 2021, Entrada surveyed the relative top of casing (TOC) elevations and on June 9, 2021, collected depth to water measurements in each piezometer. The surveyed TOC relative elevations were compared to an arbitrary benchmark of 100 feet. The measured DTW from TOC measurements and relative groundwater elevations are summarized below.

Piezometer ID	DTW (feet below TOC)	Relative Groundwater Elevation (feet)
TP3	6.82	89.11
TP4	6.01	89.06
TP5	9.12	89.57
TP6	6.11	89.27
TP7	10.80	89.14

Groundwater was determined to flow north-northeast with an average gradient of 0.003 feet per foot. The piezometer locations, relative groundwater elevations, potentiometric surface contours, and groundwater analytical data collected from initial investigation activities are displayed on Figure 3.

ADDITIONAL SITE CHARACTERIZATION (II)

Based on the data collected to date, Entrada proposes to conduct additional delineation of the remaining soil impact by advancing a minimum of 14 soil borings at the Site with a direct push drilling rig. At least 3 days prior to drilling, the drilling subcontractor will call in a utility locate request in accordance with Colorado State laws. Each soil boring will

be advanced to a total depth of 12 ft-bgs. An Entrada geologist will field screen the soil recovered from each soil boring and record general lithology, VOC concentrations measured with a PID, and observations of visual and olfactory evidence of impact such as staining and odor. One soil sample will be collected from the vadose zone in each soil boring from the interval exhibiting the greatest field evidence of impact. In the absence of field observed impact, the soil sample will be collected immediately above groundwater saturation. The soil samples will be submitted to Origins for laboratory analysis of BTEX, 1,2,4 and 1,3,5 TMB, TPH-GRO/DRO/ORO, naphthalene, acenaphthene, anthracene, chrysene, fluorene, 1-methylnaphthalene, 2-methylnaphthalene, and pyrene by equivalent analytical methods to the previously analyzed samples. The proposed soil boring locations are shown on Figure 4. The proposed soil boring locations are subject to change based on field conditions encountered during drilling.

To investigate the remaining extent of groundwater impact, eight of the soil borings will be completed as 1-inch PVC monitoring wells to facilitate subsequent groundwater monitoring and sample collection. Each monitoring well will be installed to a total depth of approximately 12 ft-bgs with 10 feet of 0.010-inch slotted screen extending from total depth and blank casing extending from the top of screen to ground surface. The monitoring wells will be completed as flush-mounts or with steel riser protective covers. At least 3 days prior to the commencement of work, Entrada will file a Notice of Intent to construct monitoring wells with the Colorado Division of Water Resources (DWR) and all monitoring wells will be constructed and permitted in accordance with DWR well construction rules per COGCC Rule 915.e.(3).B.iii. The proposed monitoring well locations are also shown on Figure 4.

At least 24-hours after installation and completion, the monitoring wells will be developed by purging 10 casing volumes from each well and groundwater samples will be collected for laboratory analysis. The groundwater samples will be analyzed for BTEX, 1,2,4-TMB, 1,3,5-TMB, and naphthalene by EPA Method 8260D. During sampling activities, the relative elevations of each monitoring well's top of casing will be surveyed to calculate the groundwater potentiometric surface. Additionally, the temporary piezometers previously installed will be removed.

We appreciate the opportunity to assist Great Western Operating Company, LLC.
Please contact me at (804) 513-0707 if you have any questions.

Sincerely,

ENTRADA CONSULTING GROUP

A handwritten signature in blue ink, appearing to read "Jeremy Pike".

Jeremy Pike, P.G.
Senior Project Geologist

Attachments:

Figure 1 – General Location Map

Figure 2 – Soil Analytical Results

Figure 3 – Relative Groundwater Elevation Map

Figure 4 – Proposed Soil Boring and Monitoring Well Locations

Table 1 – Soil Analytical Results: BTEXN, TMBs, TPH

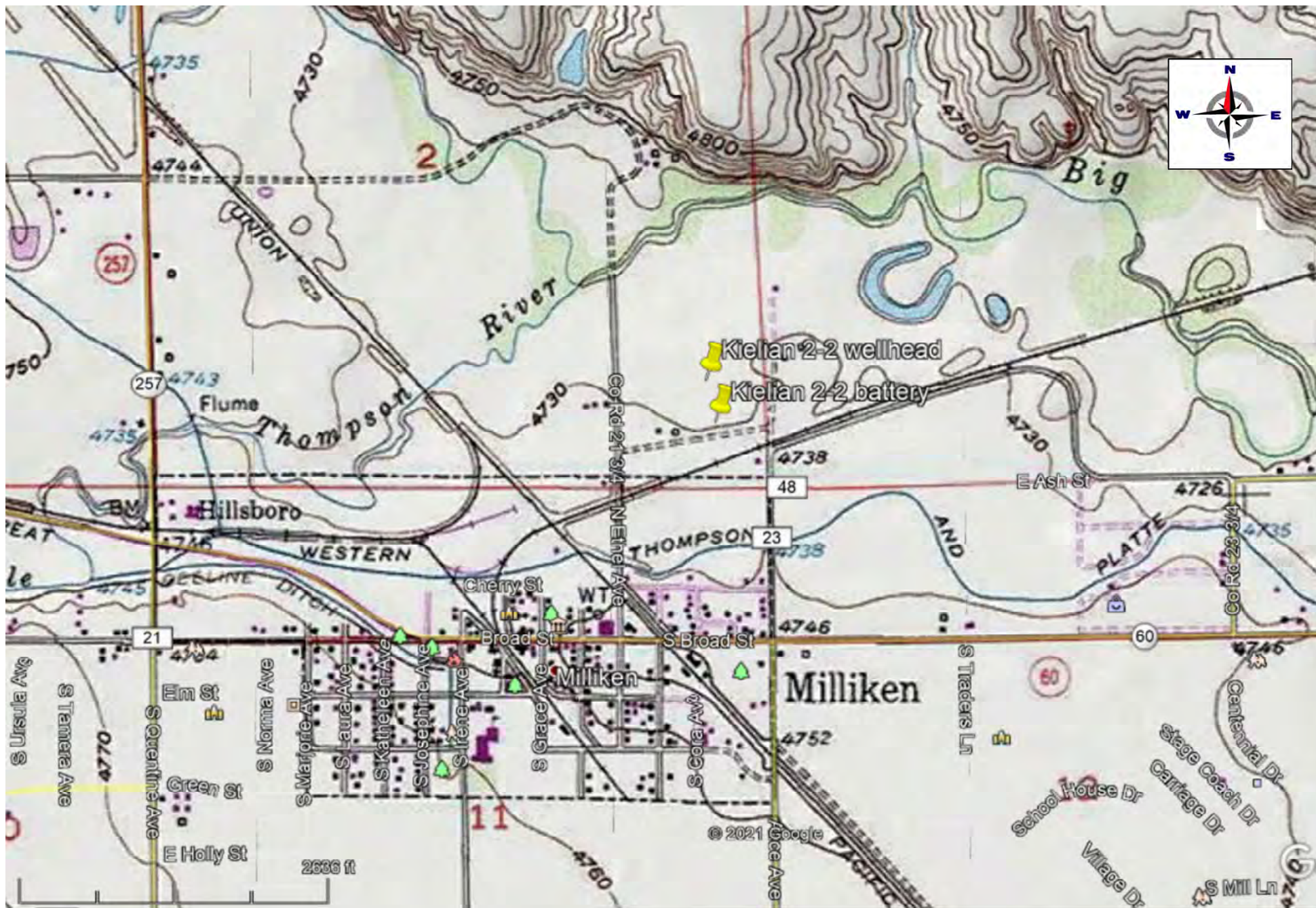
Table 2 – Soil Analytical Results: Polycyclic Aromatic Hydrocarbons

Table 3 – Soil Analytical Results: Metals and Soil Suitability for Reclamation

Attachment A: Photographic Log

Attachment B: Laboratory Analytical Reports

FIGURES



PROJECT NO:	
DRAWN BY:	BFB
DATE:	4/14/2021

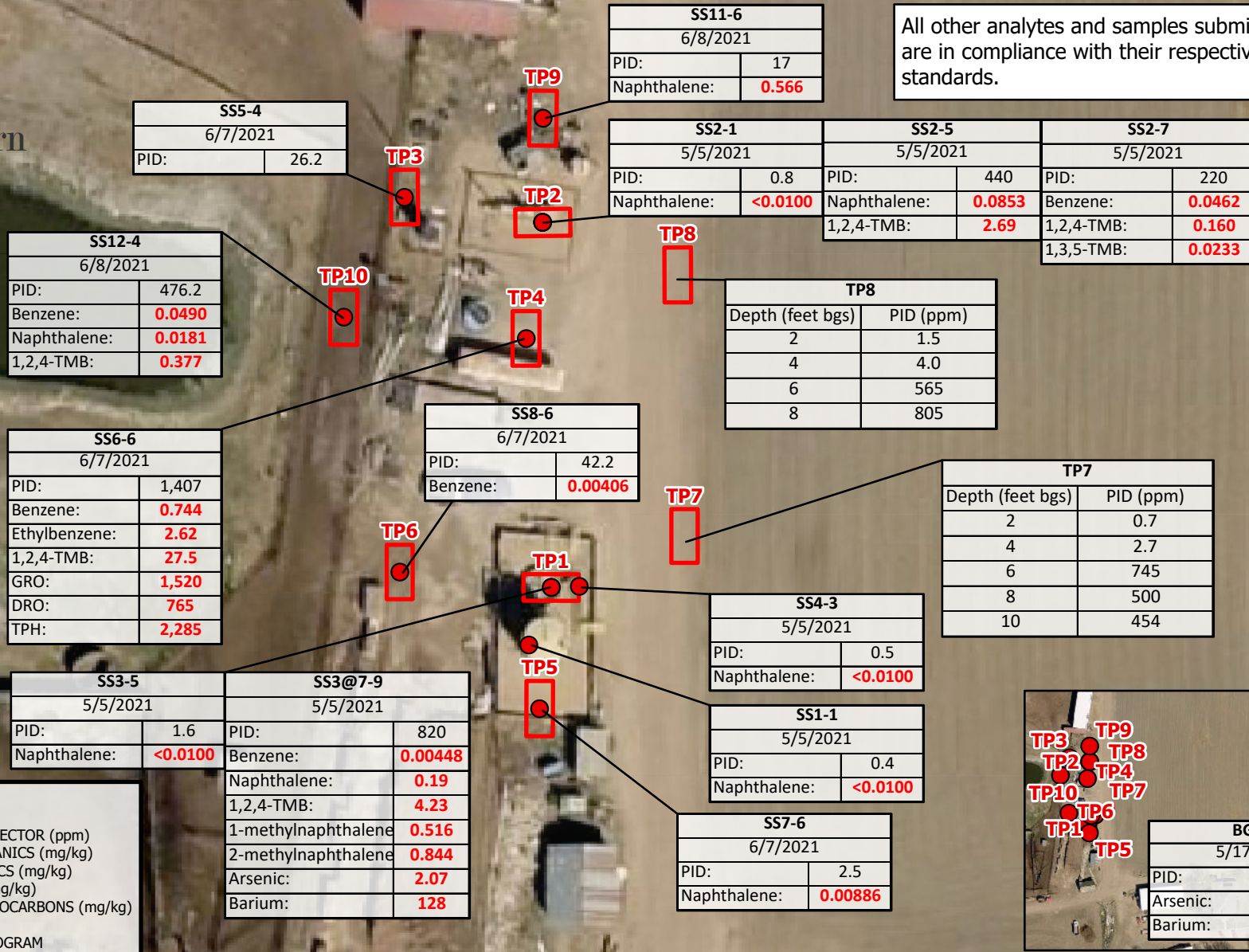
General Location Map Kielian 2-2 Battery and Wellhead S2 T4N R67W Weld County, Colorado
--



Great Western OPERATING COMPANY LLC	1001 17 th Street, Suite 2000 Denver, CO 80202 TEL. 303-398-0302
--	---

FIGURE
1

All other analytes and samples submitted for analysis are in compliance with their respective Table 915-1 standards.



LABEL LEGEND
SS: SOIL SAMPLE
PID: PHOTO IONIZATION DETECTOR (ppm)
GRO: GASOLINE RANGE ORGANICS (mg/kg)
DRO: DIESEL RANGE ORGANICS (mg/kg)
TMB: TRIMETHYLBENZENE (mg/kg)
TPH: TOTAL PETROLEUM HYDROCARBONS (mg/kg)
ppm: PARTS PER MILLION
mg/kg: MILLIGRAMS PER KILOGRAM

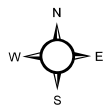
LEGEND

- Soil Sample
- Approximate Test Pit Extent

NOTES:

- SSX-X = Soil Sample ID - depth in feet below ground surface, Sample Date
- All analytical results displayed in milligrams per kilogram (mg/kg).
- All PID readings displayed in parts per million.

0 40 80
Feet
1 inch = 40 Feet



Project No: 021-060

Map By: JW

Date: 06/28/2021

SOIL ANALYTICAL RESULTS
KIELIAN BATTERY 2-2
GREAT WESTERN OPERATING COMPANY
SE 1/4 SE 1/4 SECTION 2
T4N R67W, 6TH PM
WELD COUNTY, COLORADO



1843 Sunlight Dr.
Longmont, CO 80504
303.378.4036

Figure

2

TPGW-2	
5/5/2021	
Benzene:	73
1,2,4-TMB:	1,550

TP3 (89.11)

TP4 (89.06)

TP7 (89.14)

TP6 (89.27)




TP5 (89.57)

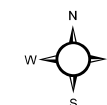
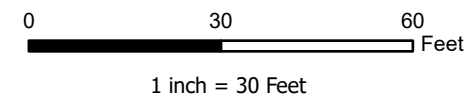
TPGW-1	
5/5/2021	
1,2,4-TMB:	240

LABEL LEGEND
 TP: TEMPORARY PIEZOMETER
 TPGW: TEST PIT GROUNDWATER

Maxar, Microsoft

LEGEND

-  Test Pit Groundwater Grab Sample
-  Relative Groundwater Elevation Contour
Contour Interval = 0.05 feet
-  Temporary Piezometer (Relative Elevation in feet)



Project No: 021-060

Map By: JW

Date: 06/28/2021

GROUNDWATER RELATIVE ELEVATION MAP - JUNE 9TH, 2021
 KIELIAN BATTERY 2-2
 GREAT WESTERN OPERATING COMPANY
 SE 1/4 SE 1/4 SECTION 2
 T4N R67W, 6TH PM
 WELD COUNTY, COLORADO



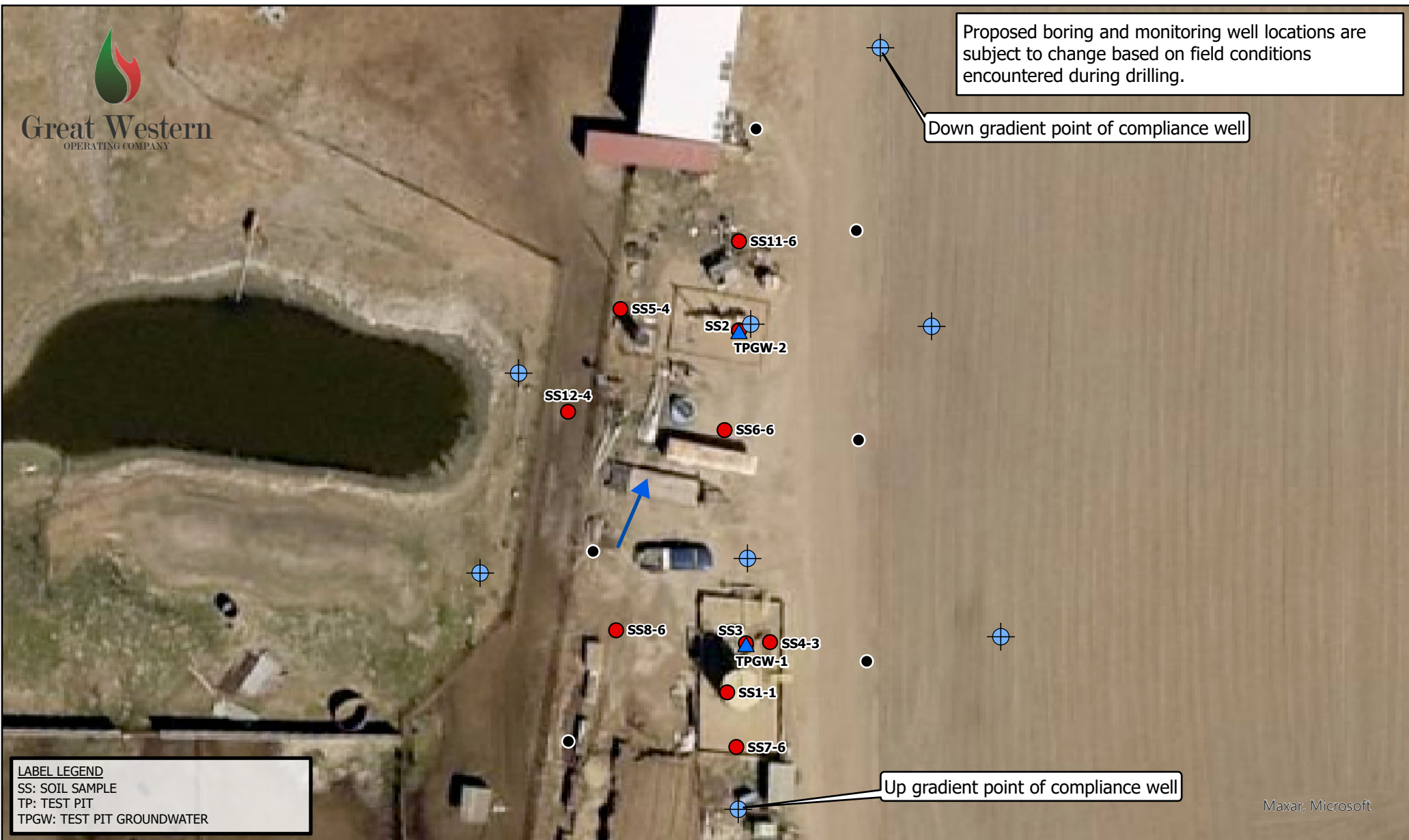
1843 Sunlight Dr.
 Longmont, CO 80504
 303.378.4036

Figure

3

Proposed boring and monitoring well locations are subject to change based on field conditions encountered during drilling.

Down gradient point of compliance well



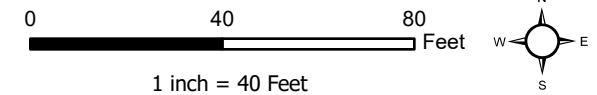
LABEL LEGEND
SS: SOIL SAMPLE
TP: TEST PIT
TPGW: TEST PIT GROUNDWATER

Up gradient point of compliance well

Maxar, Microsoft

LEGEND

- Proposed Soil Boring Location
- ⊕ Proposed Monitoring Well Location
- ▲ Test Pit Groundwater Grab Sample
- Calculated Groundwater Flow
- Soil Sample



Project No: 021-060

Map By: JW

Date: 07/26/2021

PROPOSED SOIL BORING AND MONITORING WELL LOCATIONS
KIELIAN BATTERY 2-2
GREAT WESTERN OPERATING COMPANY
SE 1/4 SE 1/4 SECTION 2
T4N R67W, 6TH PM
WELD COUNTY, COLORADO



1843 Sunlight Dr.
Longmont, CO 80504
303.378.4036

Figure

4

TABLES

TABLE 1
Analytical Results Summary: BTEXN, TMBs, TPH
Kielian 2-2 Tank Battery, Weld County, CO

Sample Information				BTEXN + TMBs							TPH			
Sample ID	Depth	Sample Date	PID Field Screening	Benzene	Toluene	Ethyl-benzene	Total Xylenes	Naphthalene	1,2,4-TMB	1,3,5-TMB	GRO	DRO	ORO	TPH
Units -->	ft-bgs	mm/dd/yyyy	ppm	mg/kg							mg/kg			
COGCC Table 915-1 GWSSL -->				0.0026	0.69	0.78	9.9	0.0038	0.0081	0.0087	500	500	500	500
SS1-1	1	5/5/2021	0.4	<0.00200	<0.00200	<0.00200	<0.00200	<0.0100	<0.00200	<0.00200	<0.200	<50.0	<200	<200
SS2-1	1	5/5/2021	0.8	<0.00200	<0.00200	<0.00200	<0.00200	<0.0100	<0.00200	<0.00200	0.313	<50.0	<200	<200
SS2-5	5	5/5/2021	440	<0.00200	0.00260	0.00638	0.0102	0.0853	2.69	<0.00200	231	135	<200	366
SS2-7	7	5/5/2021	220	0.0462	<0.00200	0.0525	0.0934	<0.00380	0.160	0.0233	7.46	<50.0	<200	7.46
SS3-5	5	5/5/2021	1.6	<0.00200	<0.00200	<0.00200	<0.00200	<0.0100	<0.00200	<0.00200	<0.200	<50.0	<200	<200
SS3@7-9	7-9	5/5/2021	820	0.00448	0.00272	0.247	0.00734	0.19	4.23	0.00646	127	290	<200	417
SS4-3	3	5/5/2021	0.5	<0.00200	<0.00200	<0.00200	<0.00200	<0.0100	<0.00200	<0.00200	<0.200	<50.0	<200	<200
SS5-4	4	6/7/2021	26.2	<0.00200	<0.00200	<0.00200	<0.00200	<0.00067	<0.00200	<0.00200	<0.200	<50.0	<200	<200
SS6-6	6	6/7/2021	1,407	0.744	0.0590	2.62	<0.0500	<0.00067	27.5	<0.0500	1,520	765	<200	2,285
SS7-6	6	6/7/2021	2.5	<0.00200	<0.00200	<0.00200	<0.00200	0.00886	<0.00200	<0.00200	<0.200	<50.0	<200	<200
SS8-6	6	6/7/2021	42.2	0.00406	<0.00200	0.0429	0.281	0.000583	0.0405	0.0169	2.07	<50.0	<200	2.07
SS11-6	6	6/8/2021	17	<0.00200	<0.00200	<0.00200	<0.00200	0.566	<0.00200	<0.00200	<0.200	<50.0	<200	<200
SS12-4	4	6/8/2021	476.2	0.0490	<0.00200	0.0801	<0.00200	0.0181	0.377	<0.00200	15.5	<50.0	<200	15.5

Notes:

GRO - Gasoline Range Organics
DRO - Diesel Range Organics
ORO - Oil Range Organics
TPH - Total Petroleum Hydrocarbons
PID - Photo Ionization Detector
TMB - Trimethylbenzene
ft-bgs - feet below ground surface

mg/kg - milligrams per kilogram
ppm - parts per million
COGCC - Colorado Oil and Gas Conservation Commission
BTEXN - Benzene, Toluene, Ethylbenzene, Xylenes, Naphthalene
GWSSL - Groundwater Soil Screening Level
< - indicates result is below the laboratory reporting limit
Bold - Above COGCC Table 915-1 GWSSL

TABLE 2
Analytical Results Summary: Polycyclic Aromatic Hydrocarbons
Kielian 2-2 Tank Battery. Mead, CO

Analyte	COGCC Table 915-1 GWSSL	SS3@7-9	SS5-4	SS6-6	SS7-6	SS8-6	SS11-6	SS12-4	BG1-1	Units
Sample Information										
Sample Date	NA	5/5/2021	6/7/2021	6/7/2021	6/7/2021	6/7/2021	6/8/2021	6/8/2021	5/17/2021	mm/dd/yyyy
Sample Depth	NA	7-9	4	6	6	6	6	4	1	ft-bgs
Field Screening	NA	820	26.2	1,407	2.5	42.2	17	476.2	0.3	ppm
Polycyclic Aromatic Hydrocarbons										
acenaphthene	0.55	0.0383	<0.00067	<0.00067	0.000782	<0.00067	0.149	0.0039	-	mg/kg
anthracene	5.8	0.00285	<0.00067	<0.00067	<0.00067	<0.00067	0.00639	<0.00067	-	mg/kg
benz(a)anthracene	0.011	<0.00335	-	-	-	-	-	-	-	mg/kg
benzo(b)fluoranthene	0.3	<0.00335	-	-	-	-	-	-	-	mg/kg
benzo(k)fluoranthene	2.9	<0.00335	-	-	-	-	-	-	-	mg/kg
benzo(a)pyrene	0.24	<0.00335	-	-	-	-	-	-	-	mg/kg
chrysene	9	0.00226	<0.00067	0.0011	0.000334	0.00126	0.0133	<0.00067	-	mg/kg
dibenzo(a,h)anthracene	0.096	<0.00335	-	-	-	-	-	-	-	mg/kg
fluoranthene	8.9	<0.00335	-	-	-	-	-	-	-	mg/kg
fluorene	0.54	0.115	-	-	-	-	-	-	-	mg/kg
indeno(1,2,3-cd)pyrene	0.98	<0.00335	-	-	-	-	-	-	-	mg/kg
1-methylnaphthalene	0.006	0.516	-	-	-	-	-	-	-	mg/kg
2-methylnaphthalene	0.019	0.844	-	-	-	-	-	-	-	mg/kg
pyrene	1.3	0.0032	<0.00067	0.00259	0.000702	0.0018	0.0121	<0.00067	-	mg/kg

Notes:

COGCC - Colorado Oil and Gas Conservation Commission
 GWSSL - Groundwater Soil Screening Level
 SS9-6: Sample name
 NA - not applicable
 ft-bgs - feet below ground surface

ppm - parts per million
 - - not analyzed
 mg/kg - milligrams per kilogram
 < - indicates result is below the laboratory reporting limit
Bold- Above COGCC Table 915-1 GWSSL

TABLE 3
Analytical Results Summary: Metals and Soil Suitability for Reclamation
Kielian 2-2 Tank Battery. Mead, CO

Analyte	COGCC Table 915-1 GWSSL	SS3@7-9	SS5-4	SS6-6	SS7-6	SS8-6	SS11-6	SS12-4	BG1-1	Units
Sample Information										
Sample Date	NA	5/5/2021	6/7/2021	6/7/2021	6/7/2021	6/7/2021	6/8/2021	6/8/2021	5/17/2021	mm/dd/yyyy
Sample Depth	NA	7-9	4	6	6	6	6	4	1	ft-bgs
Field Screening	NA	820	26.2	1,407	2.5	42.2	17	476.2	0.3	ppm
Metals in Soil										
arsenic	0.29	2.07	-	-	-	-	-	-	2.42	mg/kg
barium	82	128	-	-	-	-	-	-	232	mg/kg
cadmium	0.38	0.23	-	-	-	-	-	-	-	mg/kg
chromium (VI)	0.00067	<1.22	-	-	-	-	-	-	-	mg/kg
copper	46	13.7	-	-	-	-	-	-	-	mg/kg
lead	14	8.17	-	-	-	-	-	-	-	mg/kg
nickel	26	13.6	-	-	-	-	-	-	-	mg/kg
selenium	0.26	0.216	-	-	-	-	-	-	-	mg/kg
silver	0.8	0.0715	-	-	-	-	-	-	-	mg/kg
zinc	370	51.3	-	-	-	-	-	-	-	mg/kg
Soil Suitability for Reclamation										
pH	6 - 8.3	7.96	-	-	-	-	-	-	-	su
EC	4	1.48	-	-	-	-	-	-	-	mmhos/cm
boron	2	1.6	-	-	-	-	-	-	-	mg/kg
SAR	6	1.20	-	-	-	-	-	-	-	unitless

Notes:

SS9-6: Sample name

mg/kg - milligrams per kilogram

COGCC - Colorado Oil and Gas Conservation Commission

ft-bgs - feet below ground surface

ppm - parts per million

su - standard units

mmhos/cm - millimhos per centimeter

EC - Electrical Conductivity

SAR - Soil Adsorption Ratio

GWSSL - Groundwater Soil Screening Level

< - indicates result is below the laboratory reporting limit

Bold- Above COGCC Table 915-1 GWSSL

ATTACHMENT A
PHOTOGRAPHIC LOG

Kielian 2-2 Photographic Log



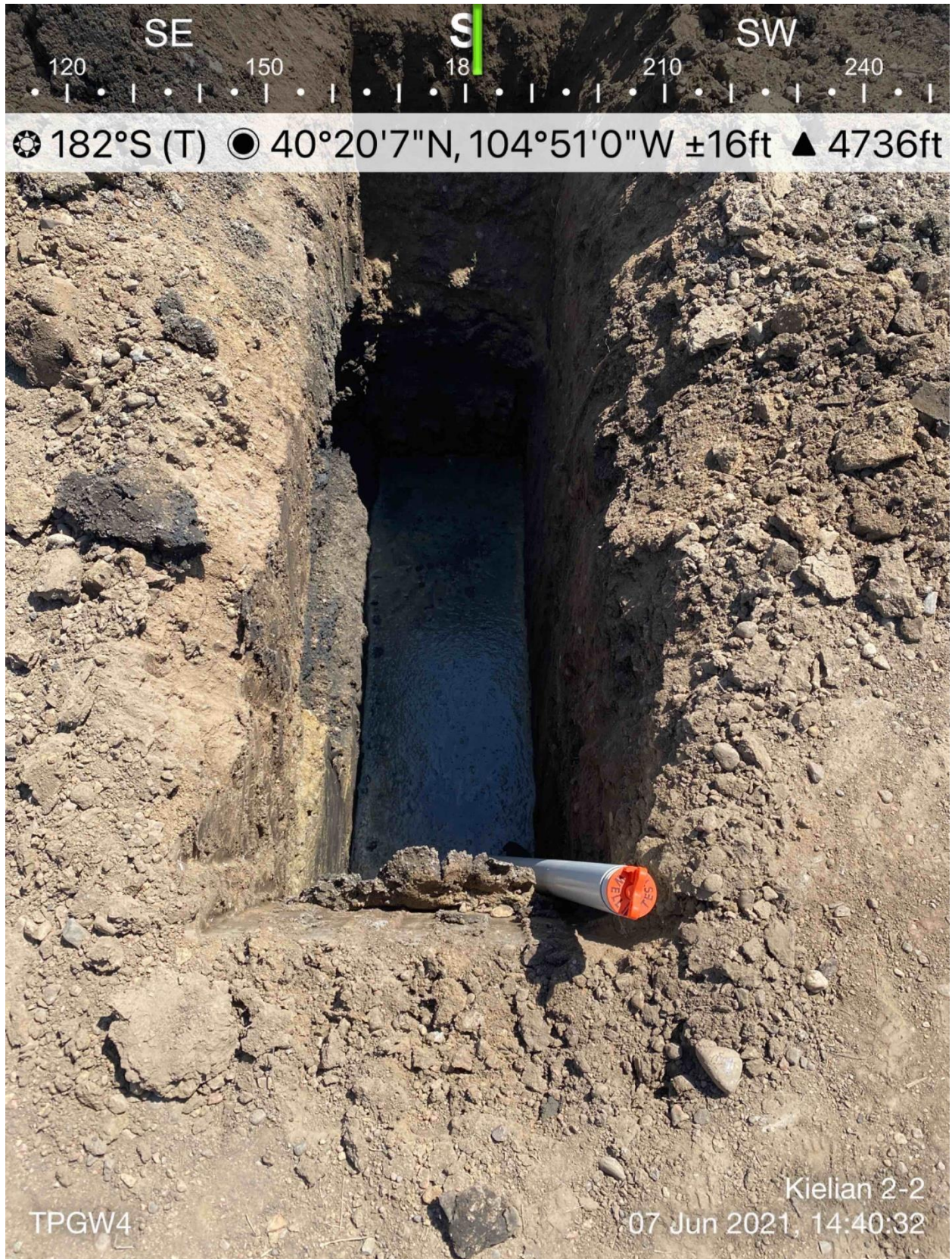
Entrada Consulting Group
June 2021

Kielian 2-2 Photographic Log



Entrada Consulting Group
June 2021

Kielian 2-2 Photographic Log



Entrada Consulting Group
June 2021

Kielian 2-2 Photographic Log

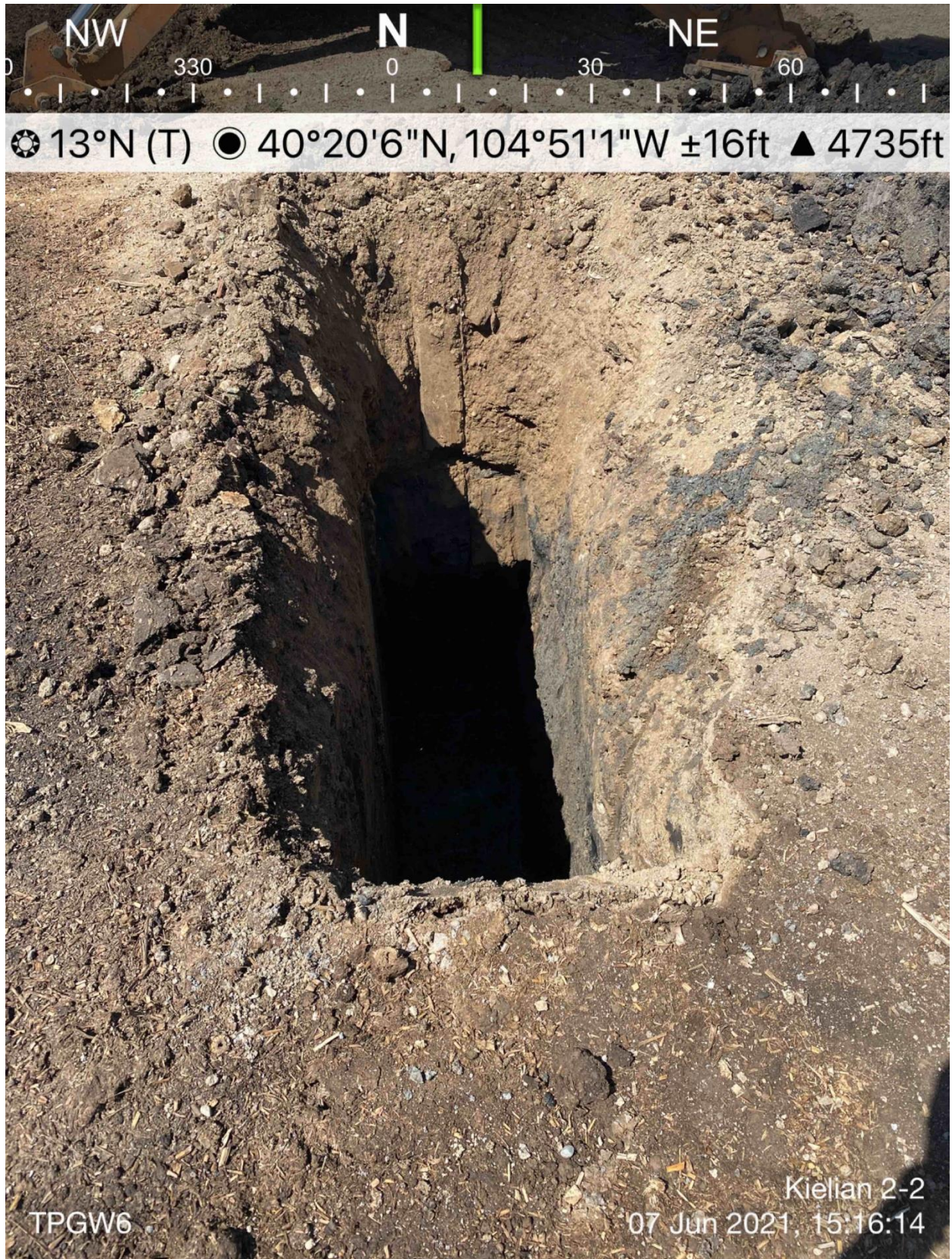


Entrada Consulting Group
June 2021

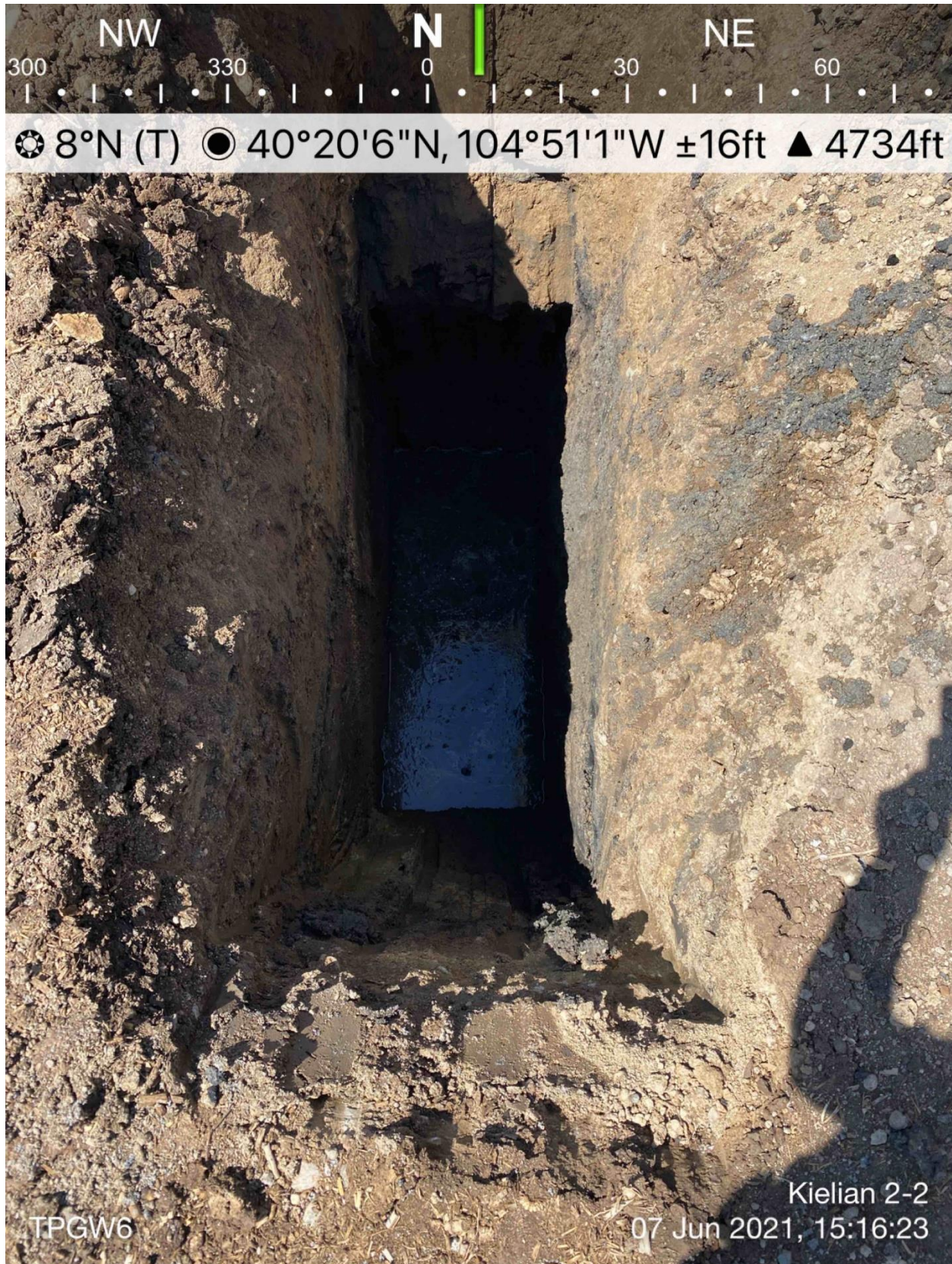
Kielian 2-2 Photographic Log



Kielian 2-2 Photographic Log



Kielian 2-2 Photographic Log



Entrada Consulting Group
June 2021

Kielian 2-2 Photographic Log



Entrada Consulting Group
June 2021

Kielian 2-2 Photographic Log



Entrada Consulting Group
June 2021

Kielian 2-2 Photographic Log



Entrada Consulting Group
June 2021

Kielian 2-2 Photographic Log



Entrada Consulting Group
June 2021

Kielian 2-2 Photographic Log



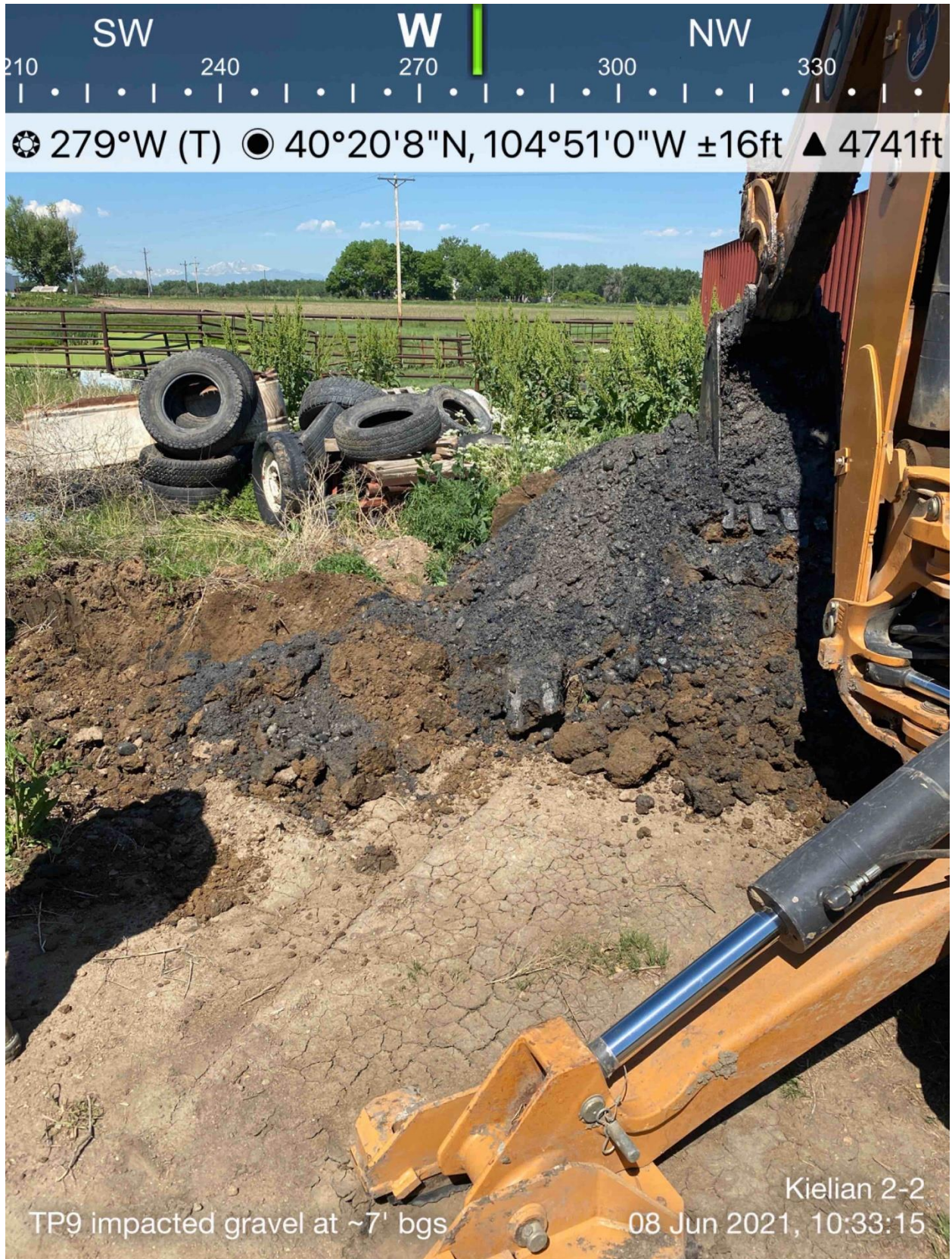
Entrada Consulting Group
June 2021

Kielian 2-2 Photographic Log



Entrada Consulting Group
June 2021

Kielian 2-2 Photographic Log



Entrada Consulting Group
June 2021

Kielian 2-2 Photographic Log



Entrada Consulting Group
June 2021

Kielian 2-2 Photographic Log



Entrada Consulting Group
June 2021

ATTACHMENT B
ANALYTICAL REPORTS

June 15, 2021

Entrada Consulting Group

Ben Baugh

330 Grand Ave. Unit C

Grand Junction CO 81501

Project Name - Kielian 2-2 TB

Project Number - 021-060

Attached are your analytical results for Kielian 2-2 TB received by Origins Laboratory, Inc. June 08, 2021. This project is associated with Origins project number Y106183-01.

The analytical results in the following report were analyzed under the guidelines of EPA Methods. These methods are identified as follows; "SW" are defined in SW-846, "EPA" are defined in 40CFR part 136 and "SM" are defined in the most current revision of Standard Methods For the Examination of Water and Wastewater.

The analytical results apply specifically to the samples and analyses specified per the attached Chain of Custody. As such, this report shall not be reproduced except in full, without the written approval of Origin's laboratory.

Unless otherwise noted, the analytical results for all soil samples are reported on a wet weight basis. All analytical analyses were performed under NELAP guidelines unless noted by a data qualifier.

Any holding time exceedances, deviations from the method specifications or deviations from Origins Laboratory's Standard Operating Procedures are outlined in the case narrative.

Thank you for selecting Origins for your analytical needs. Please contact us with any questions concerning this report, or if we can help with anything at all.

Origins Laboratory, Inc.
303.433.1322
o-squad@oelabinc.com



Entrada Consulting Group

330 Grand Ave. Unit C

Grand Junction CO 81501

Ben Baugh

Project Number: 021-060

Project: Kielian 2-2 TB

CROSS REFERENCE REPORT

Sample ID	Laboratory ID	Matrix	Date Sampled	Date Received
SS5-4	Y106183-01	Soil	June 7, 2021 13:23	06/08/2021 15:50
SS6-6	Y106183-02	Soil	June 7, 2021 14:07	06/08/2021 15:50
SS7-6	Y106183-03	Soil	June 7, 2021 14:28	06/08/2021 15:50
SS8-6	Y106183-04	Soil	June 7, 2021 15:11	06/08/2021 15:50
SS11-6	Y106183-07	Soil	June 8, 2021 10:32	06/08/2021 15:50
SS12-4	Y106183-08	Soil	June 8, 2021 12:02	06/08/2021 15:50

Origins Laboratory, Inc.



Jen Pellegrini, Project Manager

The results in this report apply to the samples analyzed in accordance with the chain of custody document. This analytical report must be reproduced in its entirety.

Entrada Consulting Group

330 Grand Ave. Unit C

Grand Junction CO 81501

Ben Baugh

Project Number: 021-060

Project: Kielian 2-2 TB

ORIGINS

LABORATORY, INC

www.originslaboratory.com

4/10/18

Bill To
CLIENT WEIDMAN

page ☐ of ☐

Client: Entrada

Address: 330 Grand Ave. Unit C, Grand Junction, CO 81501

Telephone Number: 970-244-1650

Email Address: JP@ENTRADA-CONSULTING.COM, JBAUGH@ENTRADA-CONSULTING.COM

Project Manager: B. BAUGH

Project Name: KIELIAN 2-2 TB

Project Number: 021-060

Samples Collected By: J. PINE / J. BOLEMAN

Sample ID Description	Date Sampled	Time Sampled	# of Containers	Preservative				Matrix			Analysis	Sample Instructions:	
				Unpreserved	HCl	HNO ₃	Other	Groundwater	Soil	Air Summ # Container #			Other
SS-4	6/7/11	1323	2									X	1
SS-6	1	1407										X	2
SS-7	1	1428										X	3
SS-8	1	1511										X	4
SS-9-4	6/8/21	0935										X	5
SS-10-4	1	0930										X	6
SS-11-6	1	1032										X	7
SS-12-4	1	1202										X	8
SS-13-6	1	1206										HOLD	9
													10
Relinquished By: <u>WMA</u>	Date: <u>6/8/21</u>	Time: <u>1550</u>		Received By: <u>[Signature]</u>				Date: <u>6/8/21</u>			Time: <u>1550</u>	Turnaround Time: <input type="checkbox"/> Same Day <input type="checkbox"/> 24 Hr <input type="checkbox"/> 48 Hr <input checked="" type="checkbox"/> Standard	
Relinquished By:	Date:	Time:		Received By:				Date:			Time:		

13.6 Date Results Needed

Origins Laboratory, Inc.

Jefe Pellegrini

Jen Pellegrini, Project Manager

The results in this report apply to the samples analyzed in accordance with the chain of custody document. This analytical report must be reproduced in its entirety.

Entrada Consulting Group
330 Grand Ave. Unit C
Grand Junction CO 81501

Ben Baugh
Project Number: 021-060
Project: Kielian 2-2 TB

Origins Laboratory

F-012207-01-R1
Effective Date: 01/09/12

Sample Receipt Checklist

Origins Work Order: Y106183

Client: Entrada
Client Project ID: Kielian 2-2

Checklist Completed by: Jm

Shipped Via: HD
(UPS, FedEx, Hand Delivered, Pick-up, etc.)

Date/time completed: 6-9-21

Airbill #: N/A

Matrix(s) Received: (Check all that apply): ☒ Soil/Solid ☐ Water ☐ Other: _____

Cooler Number/Temperature: 1 13.6 °C / _____ °C / _____ °C (Describe) _____ °C

Thermometer ID: T003

Requirement Description	Yes	No	N/A	Comments (if any)
If samples require cooling, was the temperature between 0°C to ≤ 6°C ⁽¹⁾ ?		<input checked="" type="checkbox"/>		
Is there ice present (document if blue ice is used)	<input checked="" type="checkbox"/>			
Are custody seals present on cooler? (if so, document in comments if they are signed and dated, broken or intact)		<input checked="" type="checkbox"/>		
Are custody seals present on each sample container? (if so, document in comments if they are signed and dated, broken or intact)		<input checked="" type="checkbox"/>		
Were all samples received intact ⁽¹⁾ ?	<input checked="" type="checkbox"/>			
Was adequate sample volume provided ⁽¹⁾ ?	<input checked="" type="checkbox"/>			
Are short holding time analytes or samples with HTs due within 48 hours present ⁽¹⁾ ?		<input checked="" type="checkbox"/>		
Is a chain-of-custody (COC) present and filled out completely ⁽¹⁾ ?	<input checked="" type="checkbox"/>			
Does the COC agree with the number and type of sample bottles received ⁽¹⁾ ?	<input checked="" type="checkbox"/>			
Do the sample IDs on the bottle labels match the COC ⁽¹⁾ ?	<input checked="" type="checkbox"/>			
Is the COC properly relinquished by the client with date and time recorded ⁽¹⁾ ?	<input checked="" type="checkbox"/>			
For volatiles in water – is there headspace (> ¼ inch bubble) present? If yes, contact client and note in narrative.			<input checked="" type="checkbox"/>	
Are samples preserved that require preservation and was it checked ⁽¹⁾ ? (note ID of confirmation instrument used in comments) / (preservation is not confirmed for subcontracted analyses in order to insure sample integrity)/(pH < 2 for samples preserved with HNO ₃ , HCL, H ₂ SO ₄) / (pH > 10 for samples preserved with NaAsO ₂ +NaOH, ZnAc+NaOH)			<input checked="" type="checkbox"/>	
Additional Comments (if any): <u>559-4 & 5510-4 on hold per Jeremys email on 6/9</u>				

⁽¹⁾ If NO, then contact the client before proceeding with analysis and note date/time and person contacted as well as the corrective action to in the additional comments (above) and the case narrative.

Reviewed by (Project Manager)

Date/Time Reviewed

Origins Laboratory, Inc.

Jefe Pellegrini

Jen Pellegrini, Project Manager

The results in this report apply to the samples analyzed in accordance with the chain of custody document. This analytical report must be reproduced in its entirety.

Entrada Consulting Group

330 Grand Ave. Unit C

Grand Junction CO 81501

Ben Baugh

Project Number: 021-060

Project: Kielian 2-2 TB

SS5-4

6/7/2021 1:23:00PM

Analyte	Result	Min Detection Limit	Reporting Limit	Units	Dilution	Batch	Prepared	Analyzed	Notes
---------	--------	---------------------	-----------------	-------	----------	-------	----------	----------	-------

Origins Laboratory, Inc.

Y106183-01 (Soil)

DRO/ORO by EPA 8015D

Diesel (C10-C28)	ND	50.0	mg/kg	1	B1F0911	06/09/2021	06/10/2021	U
Residual Range Organics (C28-C40)	ND	200	"	"	"	"	"	U

Surrogate: o-Terphenyl	88.3 %	50-150	"	"	"
------------------------	--------	--------	---	---	---

GBTEX+TMBs

1,2,4-Trimethylbenzene	ND	0.00200	mg/kg	1	B1F0917	06/09/2021	06/10/2021	U
1,3,5-Trimethylbenzene	ND	0.00200	"	"	"	"	"	U
Benzene	ND	0.00200	"	"	"	"	"	U
Ethylbenzene	ND	0.00200	"	"	"	"	"	U
Toluene	ND	0.00200	"	"	"	"	"	U
Gasoline Range Hydrocarbons	ND	0.200	"	"	"	"	"	U
Xylenes, total	ND	0.00200	"	"	"	"	"	U

Surrogate: 1,2-Dichloroethane-d4	97.8 %	70-130	"	"	"
Surrogate: Toluene-d8	110 %	70-130	"	"	"
Surrogate: 4-Bromofluorobenzene	98.6 %	70-130	"	"	"

PAH by 8270D SIM

Origins Laboratory, Inc.



The results in this report apply to the samples analyzed in accordance with the chain of custody document. This analytical report must be reproduced in its entirety.

Jen Pellegrini, Project Manager

Entrada Consulting Group

330 Grand Ave. Unit C

Grand Junction CO 81501

Ben Baugh

Project Number: 021-060

Project: Kielian 2-2 TB

SS5-4

6/7/2021 1:23:00PM

Analyte	Result	Min Detection Limit	Reporting Limit	Units	Dilution	Batch	Prepared	Analyzed	Notes
---------	--------	---------------------	-----------------	-------	----------	-------	----------	----------	-------

Waypoint Analytical, Inc.

Y106183-01 (Soil)

PAH by 8270D SIM

Acenaphthene	ND	0.000431	0.00067	mg/Kg	1	L557994	06/11/2021	06/11/2021
Anthracene	ND	0.000426	0.00067	"	"	"	"	"
Chrysene	ND	0.000256	0.00067	"	"	"	"	"
Naphthalene	ND	0.000467	0.00067	"	"	"	"	"
Pyrene	ND	0.000387	0.00067	"	"	"	"	"

Surrogate: 2-Fluorobiphenyl	64.9 %		33-115			"	"	"
Surrogate: 4-Terphenyl-d14	64.6 %		33-122			"	"	"
Surrogate: Nitrobenzene-d5	49.2 %		29-110			"	"	"

Origins Laboratory, Inc.



The results in this report apply to the samples analyzed in accordance with the chain of custody document. This analytical report must be reproduced in its entirety.

Jen Pellegrini, Project Manager

Entrada Consulting Group
330 Grand Ave. Unit C
Grand Junction CO 81501

Ben Baugh
Project Number: 021-060
Project: Kielian 2-2 TB

SS6-6

6/7/2021 2:07:00PM

Analyte	Result	Min Detection Limit	Reporting Limit	Units	Dilution	Batch	Prepared	Analyzed	Notes
---------	--------	---------------------	-----------------	-------	----------	-------	----------	----------	-------

Origins Laboratory, Inc. Y106183-02 (Soil)

DRO/ORO by EPA 8015D

Diesel (C10-C28)	765		50.0	mg/kg	1	B1F0911	06/09/2021	06/10/2021	
Residual Range Organics (C28-C40)	ND		200	"	"	"	"	"	U

Surrogate: o-Terphenyl	76.1 %	50-150	"	"	"
------------------------	--------	--------	---	---	---

GBTEX+TMBs

1,2,4-Trimethylbenzene	27.5	0.500	mg/kg	250	B1F0917	06/09/2021	06/10/2021	
1,3,5-Trimethylbenzene	ND	0.0500	"	25	"	"	06/10/2021	R-01, U
Benzene	0.744	0.0500	"	"	"	"	"	
Ethylbenzene	2.62	0.0500	"	"	"	"	"	
Toluene	0.0590	0.0500	"	"	"	"	"	
Gasoline Range Hydrocarbons	1520	50.0	"	250	"	"	06/10/2021	
Xylenes, total	ND	0.0500	"	25	"	"	06/10/2021	R-01, U

Surrogate: 1,2-Dichloroethane-d4	99.3 %	70-130	"	"	"
Surrogate: Toluene-d8	106 %	70-130	"	"	"
Surrogate: 4-Bromofluorobenzene	126 %	70-130	"	"	"

PAH by 8270D SIM

Origins Laboratory, Inc.



The results in this report apply to the samples analyzed in accordance with the chain of custody document. This analytical report must be reproduced in its entirety.

Jen Pellegrini, Project Manager

Entrada Consulting Group

330 Grand Ave. Unit C

Grand Junction CO 81501

Ben Baugh

Project Number: 021-060

Project: Kielian 2-2 TB

SS6-6

6/7/2021 2:07:00PM

Analyte	Result	Min Detection Limit	Reporting Limit	Units	Dilution	Batch	Prepared	Analyzed	Notes
---------	--------	---------------------	-----------------	-------	----------	-------	----------	----------	-------

Waypoint Analytical, Inc.

Y106183-02 (Soil)

PAH by 8270D SIM

Acenaphthene	ND	0.000431	0.00067	mg/Kg	1	L557994	06/11/2021	06/11/2021
Anthracene	ND	0.000426	0.00067	"	"	"	"	"
Chrysene	0.0011	0.000256	0.00067	"	"	"	"	"
Naphthalene	ND	0.000467	0.00067	"	"	"	"	"
Pyrene	0.00259	0.000387	0.00067	"	"	"	"	"

Surrogate: 2-Fluorobiphenyl	64.5 %		33-115			"	"	"
Surrogate: 4-Terphenyl-d14	63.6 %		33-122			"	"	"
Surrogate: Nitrobenzene-d5	51.8 %		29-110			"	"	"

Origins Laboratory, Inc.



Jen Pellegrini, Project Manager

The results in this report apply to the samples analyzed in accordance with the chain of custody document. This analytical report must be reproduced in its entirety.

Entrada Consulting Group

330 Grand Ave. Unit C

Grand Junction CO 81501

Ben Baugh

Project Number: 021-060

Project: Kielian 2-2 TB

SS7-6

6/7/2021 2:28:00PM

Analyte	Result	Min Detection Limit	Reporting Limit	Units	Dilution	Batch	Prepared	Analyzed	Notes
---------	--------	---------------------	-----------------	-------	----------	-------	----------	----------	-------

Origins Laboratory, Inc.

Y106183-03 (Soil)

DRO/ORO by EPA 8015D

Diesel (C10-C28)	ND		50.0	mg/kg	1	B1F0914	06/09/2021	06/09/2021	U
Residual Range Organics (C28-C40)	ND		200	"	"	"	"	"	U

Surrogate: o-Terphenyl	83.9 %	50-150	"	"	"
------------------------	--------	--------	---	---	---

GBTEX+TMBs

1,2,4-Trimethylbenzene	ND	0.00200	mg/kg	1	B1F0913	06/09/2021	06/09/2021	U
1,3,5-Trimethylbenzene	ND	0.00200	"	"	"	"	"	U
Benzene	ND	0.00200	"	"	"	"	"	U
Ethylbenzene	ND	0.00200	"	"	"	"	"	U
Toluene	ND	0.00200	"	"	"	"	"	U
Gasoline Range Hydrocarbons	ND	0.200	"	"	"	"	"	U
Xylenes, total	ND	0.00200	"	"	"	"	"	U

Surrogate: 1,2-Dichloroethane-d4	96.2 %	70-130	"	"	"
Surrogate: Toluene-d8	111 %	70-130	"	"	"
Surrogate: 4-Bromofluorobenzene	97.5 %	70-130	"	"	"

PAH by 8270D SIM

Origins Laboratory, Inc.



The results in this report apply to the samples analyzed in accordance with the chain of custody document. This analytical report must be reproduced in its entirety.

Jen Pellegrini, Project Manager

Entrada Consulting Group

330 Grand Ave. Unit C

Grand Junction CO 81501

Ben Baugh

Project Number: 021-060

Project: Kielian 2-2 TB

SS7-6

6/7/2021 2:28:00PM

Analyte	Result	Min Detection Limit	Reporting Limit	Units	Dilution	Batch	Prepared	Analyzed	Notes
---------	--------	---------------------	-----------------	-------	----------	-------	----------	----------	-------

Waypoint Analytical, Inc.

Y106183-03 (Soil)

PAH by 8270D SIM

Acenaphthene	0.000782	0.000431	0.00067	mg/Kg	1	L557994	06/11/2021	06/11/2021	
Anthracene	ND	0.000426	0.00067	"	"	"	"	"	
Chrysene	0.000334	0.000256	0.00067	"	"	"	"	"	J
Naphthalene	0.00886	0.000467	0.00067	"	"	"	"	"	
Pyrene	0.000702	0.000387	0.00067	"	"	"	"	"	

Surrogate: 2-Fluorobiphenyl	71 %		33-115			"	"	"	
Surrogate: 4-Terphenyl-d14	71 %		33-122			"	"	"	
Surrogate: Nitrobenzene-d5	54 %		29-110			"	"	"	

Origins Laboratory, Inc.



Jen Pellegrini, Project Manager

The results in this report apply to the samples analyzed in accordance with the chain of custody document. This analytical report must be reproduced in its entirety.

Entrada Consulting Group
330 Grand Ave. Unit C
Grand Junction CO 81501

Ben Baugh
Project Number: 021-060
Project: Kielian 2-2 TB

SS8-6

6/7/2021 3:11:00PM

Analyte	Result	Min Detection Limit	Reporting Limit	Units	Dilution	Batch	Prepared	Analyzed	Notes
---------	--------	---------------------	-----------------	-------	----------	-------	----------	----------	-------

Origins Laboratory, Inc. Y106183-04 (Soil)

DRO/ORO by EPA 8015D

Diesel (C10-C28)	ND	50.0	mg/kg	1	B1F1005	06/10/2021	06/10/2021	U
Residual Range Organics (C28-C40)	ND	200	"	"	"	"	"	U

Surrogate: o-Terphenyl	68.0 %	50-150	"	"	"
------------------------	--------	--------	---	---	---

GBTEX+TMBs

1,2,4-Trimethylbenzene	0.0405	0.00200	mg/kg	1	B1F0917	06/09/2021	06/10/2021	
1,3,5-Trimethylbenzene	0.0169	0.00200	"	"	"	"	"	
Benzene	0.00406	0.00200	"	"	"	"	"	
Ethylbenzene	0.0429	0.00200	"	"	"	"	"	
Toluene	ND	0.00200	"	"	"	"	"	U
Gasoline Range Hydrocarbons	2.07	0.200	"	"	"	"	"	
Xylenes, total	0.281	0.00200	"	"	"	"	"	

Surrogate: 1,2-Dichloroethane-d4	97.5 %	70-130	"	"	"
Surrogate: Toluene-d8	108 %	70-130	"	"	"
Surrogate: 4-Bromofluorobenzene	98.3 %	70-130	"	"	"

PAH by 8270D SIM

Origins Laboratory, Inc.



The results in this report apply to the samples analyzed in accordance with the chain of custody document. This analytical report must be reproduced in its entirety.

Jen Pellegrini, Project Manager

Entrada Consulting Group

330 Grand Ave. Unit C

Grand Junction CO 81501

Ben Baugh

Project Number: 021-060

Project: Kielian 2-2 TB

SS8-6

6/7/2021 3:11:00PM

Analyte	Result	Min Detection Limit	Reporting Limit	Units	Dilution	Batch	Prepared	Analyzed	Notes
---------	--------	---------------------	-----------------	-------	----------	-------	----------	----------	-------

Waypoint Analytical, Inc.

Y106183-04 (Soil)

PAH by 8270D SIM

Acenaphthene	ND	0.000431	0.00067	mg/Kg	1	L557994	06/11/2021	06/11/2021	
Anthracene	ND	0.000426	0.00067	"	"	"	"	"	
Chrysene	0.00126	0.000256	0.00067	"	"	"	"	"	
Naphthalene	0.000583	0.000467	0.00067	"	"	"	"	"	J
Pyrene	0.0018	0.000387	0.00067	"	"	"	"	"	

Surrogate: 2-Fluorobiphenyl	66.7 %		33-115			"	"	"	
Surrogate: 4-Terphenyl-d14	71.5 %		33-122			"	"	"	
Surrogate: Nitrobenzene-d5	52 %		29-110			"	"	"	

Origins Laboratory, Inc.



Jen Pellegrini, Project Manager

The results in this report apply to the samples analyzed in accordance with the chain of custody document. This analytical report must be reproduced in its entirety.

Entrada Consulting Group
330 Grand Ave. Unit C
Grand Junction CO 81501

Ben Baugh
Project Number: 021-060
Project: Kielian 2-2 TB

SS11-6

6/8/2021 10:32:00AM

Analyte	Result	Min Detection Limit	Reporting Limit	Units	Dilution	Batch	Prepared	Analyzed	Notes
---------	--------	---------------------	-----------------	-------	----------	-------	----------	----------	-------

Origins Laboratory, Inc. Y106183-07 (Soil)

DRO/ORO by EPA 8015D

Diesel (C10-C28)	ND		50.0	mg/kg	1	B1F1005	06/10/2021	06/10/2021	U
Residual Range Organics (C28-C40)	ND		200	"	"	"	"	"	U

Surrogate: o-Terphenyl	84.8 %		50-150			"	"	"	
------------------------	--------	--	--------	--	--	---	---	---	--

GBTEX+TMBs

1,2,4-Trimethylbenzene	ND		0.00200	mg/kg	1	B1F0917	06/09/2021	06/10/2021	U
1,3,5-Trimethylbenzene	ND		0.00200	"	"	"	"	"	U
Benzene	ND		0.00200	"	"	"	"	"	U
Ethylbenzene	ND		0.00200	"	"	"	"	"	U
Toluene	ND		0.00200	"	"	"	"	"	U
Gasoline Range Hydrocarbons	ND		0.200	"	"	"	"	"	U
Xylenes, total	ND		0.00200	"	"	"	"	"	U

Surrogate: 1,2-Dichloroethane-d4	99.3 %		70-130			"	"	"	
Surrogate: Toluene-d8	109 %		70-130			"	"	"	
Surrogate: 4-Bromofluorobenzene	98.5 %		70-130			"	"	"	

PAH by 8270D SIM

Origins Laboratory, Inc.



The results in this report apply to the samples analyzed in accordance with the chain of custody document. This analytical report must be reproduced in its entirety.

Jen Pellegrini, Project Manager

Entrada Consulting Group

330 Grand Ave. Unit C

Grand Junction CO 81501

Ben Baugh

Project Number: 021-060

Project: Kielian 2-2 TB

SS11-6

6/8/2021 10:32:00AM

Analyte	Result	Min Detection Limit	Reporting Limit	Units	Dilution	Batch	Prepared	Analyzed	Notes
---------	--------	---------------------	-----------------	-------	----------	-------	----------	----------	-------

Waypoint Analytical, Inc.

Y106183-07 (Soil)

PAH by 8270D SIM

Acenaphthene	0.149	0.00216	0.00335	mg/Kg	5	L557994	06/11/2021	06/11/2021	
Anthracene	0.00639	0.00213	0.00335	"	"	"	"	"	
Chrysene	0.0133	0.00128	0.00335	"	"	"	"	"	
Naphthalene	0.566	0.00234	0.00335	"	"	"	"	"	
Pyrene	0.0121	0.00194	0.00335	"	"	"	"	"	

Surrogate: 2-Fluorobiphenyl	67 %	33-115	"	"	"
Surrogate: 4-Terphenyl-d14	73.3 %	33-122	"	"	"
Surrogate: Nitrobenzene-d5	72.1 %	29-110	"	"	"

Origins Laboratory, Inc.



Jen Pellegrini, Project Manager

The results in this report apply to the samples analyzed in accordance with the chain of custody document. This analytical report must be reproduced in its entirety.

Entrada Consulting Group
330 Grand Ave. Unit C
Grand Junction CO 81501

Ben Baugh
Project Number: 021-060
Project: Kielian 2-2 TB

SS12-4

6/8/2021 12:02:00PM

Analyte	Result	Min Detection Limit	Reporting Limit	Units	Dilution	Batch	Prepared	Analyzed	Notes
---------	--------	---------------------	-----------------	-------	----------	-------	----------	----------	-------

Origins Laboratory, Inc. Y106183-08 (Soil)

DRO/ORO by EPA 8015D

Diesel (C10-C28)	ND	50.0	mg/kg	1	B1F1005	06/10/2021	06/10/2021	U
Residual Range Organics (C28-C40)	ND	200	"	"	"	"	"	U

Surrogate: o-Terphenyl 71.2 % 50-150 " " "

GBTEX+TMBs

1,2,4-Trimethylbenzene	0.377	0.0500	mg/kg	25	B1F0917	06/09/2021	06/11/2021	
1,3,5-Trimethylbenzene	ND	0.00200	"	1	"	"	06/10/2021	U
Benzene	0.0490	0.00200	"	"	"	"	"	
Ethylbenzene	0.0801	0.00200	"	"	"	"	"	
Toluene	ND	0.00200	"	"	"	"	"	U
Gasoline Range Hydrocarbons	15.5	0.200	"	"	"	"	"	
Xylenes, total	ND	0.00200	"	"	"	"	"	U

Surrogate: 1,2-Dichloroethane-d4 102 % 70-130 " " "
Surrogate: Toluene-d8 104 % 70-130 " " "
Surrogate: 4-Bromofluorobenzene 111 % 70-130 " " "

PAH by 8270D SIM

Origins Laboratory, Inc.



Jen Pellegrini, Project Manager

The results in this report apply to the samples analyzed in accordance with the chain of custody document. This analytical report must be reproduced in its entirety.

Entrada Consulting Group

330 Grand Ave. Unit C

Grand Junction CO 81501

Ben Baugh

Project Number: 021-060

Project: Kielian 2-2 TB

SS12-4

6/8/2021 12:02:00PM

Analyte	Result	Min Detection Limit	Reporting Limit	Units	Dilution	Batch	Prepared	Analyzed	Notes
---------	--------	------------------------	--------------------	-------	----------	-------	----------	----------	-------

Waypoint Analytical, Inc.

Y106183-08 (Soil)

PAH by 8270D SIM

Acenaphthene	0.0039	0.000431	0.00067	mg/Kg	1	L557994	06/11/2021	06/11/2021	
Anthracene	ND	0.000426	0.00067	"	"	"	"	"	
Chrysene	ND	0.000256	0.00067	"	"	"	"	"	
Naphthalene	0.0181	0.000467	0.00067	"	"	"	"	"	
Pyrene	ND	0.000387	0.00067	"	"	"	"	"	

Surrogate: 2-Fluorobiphenyl	69.1 %		33-115			"	"	"	
Surrogate: 4-Terphenyl-d14	76.6 %		33-122			"	"	"	
Surrogate: Nitrobenzene-d5	54.1 %		29-110			"	"	"	

Origins Laboratory, Inc.



Jen Pellegrini, Project Manager

The results in this report apply to the samples analyzed in accordance with the chain of custody document. This analytical report must be reproduced in its entirety.

Entrada Consulting Group

330 Grand Ave. Unit C

Grand Junction CO 81501

Ben Baugh

Project Number: 021-060

Project: Kielian 2-2 TB

Extractable Petroleum Hydrocarbons by 8015D - Quality Control

Origins Laboratory, Inc.

Analyte	Result	Reporting Limit	Units	Spike Level	Source Result	%REC	%REC Limits	RPD	RPD Limit	Notes
Batch B1F0911 - EPA 3550B										
Blank (B1F0911-BLK1)					Prepared: 06/09/2021 Analyzed: 06/09/2021					
Diesel (C10-C28)	ND	50.0	mg/kg							U
Residual Range Organics (C28-C40)	ND	200	"							U
Surrogate: o-Terphenyl	43		"	50.0		86.9	50-150			

Origins Laboratory, Inc.



Jen Pellegrini, Project Manager

The results in this report apply to the samples analyzed in accordance with the chain of custody document. This analytical report must be reproduced in its entirety.

Entrada Consulting Group

330 Grand Ave. Unit C

Grand Junction CO 81501

Ben Baugh

Project Number: 021-060

Project: Kielian 2-2 TB

Extractable Petroleum Hydrocarbons by 8015D - Quality Control

Origins Laboratory, Inc.

Analyte	Result	Reporting Limit	Units	Spike Level	Source Result	%REC	%REC Limits	RPD	RPD Limit	Notes
---------	--------	-----------------	-------	-------------	---------------	------	-------------	-----	-----------	-------

Batch B1F0911 - EPA 3550B

LCS (B1F0911-BS1)

Prepared: 06/09/2021 Analyzed: 06/09/2021

Diesel (C10-C28)	809	50.0	mg/kg	1000		80.9	70-130			
Residual Range Organics (C28-C40)	941	200	"	1000		94.1	70-130			
Surrogate: o-Terphenyl	46		"	50.0		92.5	50-150			

Origins Laboratory, Inc.



Jen Pellegrini, Project Manager

The results in this report apply to the samples analyzed in accordance with the chain of custody document. This analytical report must be reproduced in its entirety.

Entrada Consulting Group

330 Grand Ave. Unit C

Grand Junction CO 81501

Ben Baugh

Project Number: 021-060

Project: Kielian 2-2 TB

Extractable Petroleum Hydrocarbons by 8015D - Quality Control
Origins Laboratory, Inc.

Analyte	Result	Reporting Limit	Units	Spike Level	Source Result	%REC	%REC Limits	RPD	RPD Limit	Notes
---------	--------	-----------------	-------	-------------	---------------	------	-------------	-----	-----------	-------

Batch B1F0911 - EPA 3550B

Matrix Spike (B1F0911-MS1)		Source: Y106177-01			Prepared: 06/09/2021 Analyzed: 06/09/2021					
Diesel (C10-C28)	787	50.0	mg/kg	1000	ND	78.7	70-130			
Residual Range Organics (C28-C40)	887	200	"	1000	50.4	83.6	70-130			
Surrogate: o-Terphenyl	44		"	50.0		87.9	50-150			

Origins Laboratory, Inc.



Jen Pellegrini, Project Manager

The results in this report apply to the samples analyzed in accordance with the chain of custody document. This analytical report must be reproduced in its entirety.

Entrada Consulting Group

330 Grand Ave. Unit C

Grand Junction CO 81501

Ben Baugh

Project Number: 021-060

Project: Kielian 2-2 TB

Extractable Petroleum Hydrocarbons by 8015D - Quality Control

Origins Laboratory, Inc.

Analyte	Result	Reporting Limit	Units	Spike Level	Source Result	%REC	%REC Limits	RPD	RPD Limit	Notes
---------	--------	-----------------	-------	-------------	---------------	------	-------------	-----	-----------	-------

Batch B1F0911 - EPA 3550B

Matrix Spike Dup (B1F0911-MSD1)		Source: Y106177-01			Prepared: 06/09/2021 Analyzed: 06/09/2021					
Diesel (C10-C28)	902	50.0	mg/kg	1000	ND	90.2	70-130	13.6	35	
Residual Range Organics (C28-C40)	1070	200	"	1000	50.4	102	70-130	18.4	35	
Surrogate: o-Terphenyl	52		"	50.0		103	50-150			

Origins Laboratory, Inc.



Jen Pellegrini, Project Manager

The results in this report apply to the samples analyzed in accordance with the chain of custody document. This analytical report must be reproduced in its entirety.

Entrada Consulting Group

330 Grand Ave. Unit C

Grand Junction CO 81501

Ben Baugh

Project Number: 021-060

Project: Kielian 2-2 TB

Extractable Petroleum Hydrocarbons by 8015D - Quality Control

Origins Laboratory, Inc.

Analyte	Result	Reporting Limit	Units	Spike Level	Source Result	%REC	%REC Limits	RPD	RPD Limit	Notes
Batch B1F0913 - EPA 5030 (soil)										
Blank (B1F0913-BLK1)					Prepared: 06/09/2021 Analyzed: 06/09/2021					
1,2,4-Trimethylbenzene	ND	0.00200	mg/kg							U
Naphthalene	ND	0.0100	"							U
1,3,5-Trimethylbenzene	ND	0.00200	"							U
Benzene	ND	0.00200	"							U
Ethylbenzene	ND	0.00200	"							U
Toluene	ND	0.00200	"							U
Xylenes, total	ND	0.00200	"							U
Gasoline Range Hydrocarbons	ND	0.200	"							U
Surrogate: 1,2-Dichloroethane-d4	0.12		"	0.125		97.2	70-130			
Surrogate: Toluene-d8	0.14		"	0.125		110	70-130			
Surrogate: 4-Bromofluorobenzene	0.12		"	0.125		97.2	70-130			

Origins Laboratory, Inc.



Jen Pellegrini, Project Manager

The results in this report apply to the samples analyzed in accordance with the chain of custody document. This analytical report must be reproduced in its entirety.

Entrada Consulting Group
330 Grand Ave. Unit C
Grand Junction CO 81501

Ben Baugh
Project Number: 021-060
Project: Kielian 2-2 TB

Volatile Organic Compounds by GC/MS SW846 8260D - Quality Control
Origins Laboratory, Inc.

Analyte	Result	Reporting Limit	Units	Spike Level	Source Result	%REC	%REC Limits	RPD	RPD Limit	Notes
Batch B1F0913 - EPA 5030 (soil)										
LCS (B1F0913-BS1)					Prepared: 06/09/2021 Analyzed: 06/09/2021					
1,2,4-Trimethylbenzene	0.0583	0.00200	mg/kg	0.0500		117	70-130			
Naphthalene	0.0544	0.0100	"	0.0500		109	70-130			
1,3,5-Trimethylbenzene	0.0583	0.00200	"	0.0500		117	70-130			
Benzene	0.0470	0.00200	"	0.0500		93.9	70-130			
Ethylbenzene	0.0577	0.00200	"	0.0500		115	70-130			
m,p-Xylene	0.115	0.00400	"	0.100		115	70-130			
o-Xylene	0.0537	0.00200	"	0.0500		107	70-130			
Toluene	0.0563	0.00200	"	0.0500		113	70-130			
Surrogate: 1,2-Dichloroethane-d4	0.12		"	0.125		97.5	70-130			
Surrogate: Toluene-d8	0.14		"	0.125		110	70-130			
Surrogate: 4-Bromofluorobenzene	0.12		"	0.125		97.0	70-130			

Origins Laboratory, Inc.



Jen Pellegrini, Project Manager

The results in this report apply to the samples analyzed in accordance with the chain of custody document. This analytical report must be reproduced in its entirety.

Entrada Consulting Group
330 Grand Ave. Unit C
Grand Junction CO 81501

Ben Baugh
Project Number: 021-060
Project: Kielian 2-2 TB

Volatile Organic Compounds by GC/MS SW846 8260D - Quality Control
Origins Laboratory, Inc.

Analyte	Result	Reporting Limit	Units	Spike Level	Source Result	%REC	%REC Limits	RPD	RPD Limit	Notes
---------	--------	-----------------	-------	-------------	---------------	------	-------------	-----	-----------	-------

Batch B1F0913 - EPA 5030 (soil)

Matrix Spike (B1F0913-MS1)		Source: Y106183-03			Prepared: 06/09/2021 Analyzed: 06/09/2021					
1,2,4-Trimethylbenzene	0.0576	0.00200	mg/kg	0.0500	ND	115	70-130			
Naphthalene	0.0505	0.0100	"	0.0500	0.00248	96.1	70-130			
1,3,5-Trimethylbenzene	0.0572	0.00200	"	0.0500	ND	114	70-130			
Benzene	0.0468	0.00200	"	0.0500	ND	93.6	70-130			
Ethylbenzene	0.0573	0.00200	"	0.0500	ND	115	70-130			
m,p-Xylene	0.113	0.00400	"	0.100	ND	113	70-130			
o-Xylene	0.0537	0.00200	"	0.0500	0.000740	106	70-130			
Toluene	0.0551	0.00200	"	0.0500	ND	110	70-130			
Surrogate: 1,2-Dichloroethane-d4	0.12		"	0.125		95.0	70-130			
Surrogate: Toluene-d8	0.14		"	0.125		110	70-130			
Surrogate: 4-Bromofluorobenzene	0.12		"	0.125		98.9	70-130			

Origins Laboratory, Inc.



Jen Pellegrini, Project Manager

The results in this report apply to the samples analyzed in accordance with the chain of custody document. This analytical report must be reproduced in its entirety.

Entrada Consulting Group
330 Grand Ave. Unit C
Grand Junction CO 81501

Ben Baugh
Project Number: 021-060
Project: Kielian 2-2 TB

Volatile Organic Compounds by GC/MS SW846 8260D - Quality Control
Origins Laboratory, Inc.

Analyte	Result	Reporting Limit	Units	Spike Level	Source Result	%REC	%REC Limits	RPD	RPD Limit	Notes
Batch B1F0913 - EPA 5030 (soil)										
Matrix Spike Dup (B1F0913-MSD1)		Source: Y106183-03			Prepared: 06/09/2021 Analyzed: 06/09/2021					
1,2,4-Trimethylbenzene	0.0491	0.00200	mg/kg	0.0500	ND	98.2	70-130	15.9	20	
Naphthalene	0.0493	0.0100	"	0.0500	0.00248	93.6	70-130	2.48	20	
1,3,5-Trimethylbenzene	0.0480	0.00200	"	0.0500	ND	95.9	70-130	17.6	20	
Benzene	0.0387	0.00200	"	0.0500	ND	77.4	70-130	18.9	20	
Ethylbenzene	0.0471	0.00200	"	0.0500	ND	94.2	70-130	19.5	20	
m,p-Xylene	0.0936	0.00400	"	0.100	ND	93.6	70-130	18.6	20	
o-Xylene	0.0450	0.00200	"	0.0500	0.000740	88.5	70-130	17.6	20	
Toluene	0.0454	0.00200	"	0.0500	ND	90.8	70-130	19.3	20	
Surrogate: 1,2-Dichloroethane-d4	0.12		"	0.125		95.7	70-130			
Surrogate: Toluene-d8	0.14		"	0.125		109	70-130			
Surrogate: 4-Bromofluorobenzene	0.12		"	0.125		99.0	70-130			

Origins Laboratory, Inc.



Jen Pellegrini, Project Manager

The results in this report apply to the samples analyzed in accordance with the chain of custody document. This analytical report must be reproduced in its entirety.

Entrada Consulting Group

330 Grand Ave. Unit C

Grand Junction CO 81501

Ben Baugh

Project Number: 021-060

Project: Kielian 2-2 TB

Volatile Organic Compounds by GC/MS SW846 8260D - Quality Control
Origins Laboratory, Inc.

Analyte	Result	Reporting Limit	Units	Spike Level	Source Result	%REC	%REC Limits	RPD	RPD Limit	Notes
---------	--------	-----------------	-------	-------------	---------------	------	-------------	-----	-----------	-------

Batch B1F0914 - EPA 3550B

Blank (B1F0914-BLK1)

Prepared: 06/09/2021 Analyzed: 06/09/2021

Diesel (C10-C28)	ND	25.0	mg/kg							U
Residual Range Organics (C28-C40)	ND	100	"							U
Surrogate: o-Terphenyl	19		"	25.0		77.2	50-150			

Origins Laboratory, Inc.



Jen Pellegrini, Project Manager

The results in this report apply to the samples analyzed in accordance with the chain of custody document. This analytical report must be reproduced in its entirety.

Entrada Consulting Group

330 Grand Ave. Unit C

Grand Junction CO 81501

Ben Baugh

Project Number: 021-060

Project: Kielian 2-2 TB

Extractable Petroleum Hydrocarbons by 8015D - Quality Control

Origins Laboratory, Inc.

Analyte	Result	Reporting Limit	Units	Spike Level	Source Result	%REC	%REC Limits	RPD	RPD Limit	Notes
---------	--------	-----------------	-------	-------------	---------------	------	-------------	-----	-----------	-------

Batch B1F0914 - EPA 3550B

LCS (B1F0914-BS1)

Prepared: 06/09/2021 Analyzed: 06/09/2021

Diesel (C10-C28)	944	50.0	mg/kg	1000		94.4	70-130			
Residual Range Organics (C28-C40)	977	200	"	1000		97.7	70-130			
Surrogate: o-Terphenyl	49		"	50.0		98.2	50-150			

Origins Laboratory, Inc.



Jen Pellegrini, Project Manager

The results in this report apply to the samples analyzed in accordance with the chain of custody document. This analytical report must be reproduced in its entirety.

Entrada Consulting Group

330 Grand Ave. Unit C

Grand Junction CO 81501

Ben Baugh

Project Number: 021-060

Project: Kielian 2-2 TB

Extractable Petroleum Hydrocarbons by 8015D - Quality Control

Origins Laboratory, Inc.

Analyte	Result	Reporting Limit	Units	Spike Level	Source Result	%REC	%REC Limits	RPD	RPD Limit	Notes
---------	--------	-----------------	-------	-------------	---------------	------	-------------	-----	-----------	-------

Batch B1F0914 - EPA 3550B

Matrix Spike (B1F0914-MS1)		Source: Y106183-03			Prepared: 06/09/2021 Analyzed: 06/09/2021					
Diesel (C10-C28)	705	50.0	mg/kg	1000	ND	70.5	70-130			
Residual Range Organics (C28-C40)	761	200	"	1000	45.5	71.6	70-130			
Surrogate: o-Terphenyl	46		"	50.0		91.3	50-150			

Origins Laboratory, Inc.



Jen Pellegrini, Project Manager

The results in this report apply to the samples analyzed in accordance with the chain of custody document. This analytical report must be reproduced in its entirety.

Entrada Consulting Group

330 Grand Ave. Unit C

Grand Junction CO 81501

Ben Baugh

Project Number: 021-060

Project: Kielian 2-2 TB

Extractable Petroleum Hydrocarbons by 8015D - Quality Control
Origins Laboratory, Inc.

Analyte	Result	Reporting Limit	Units	Spike Level	Source Result	%REC	%REC Limits	RPD	RPD Limit	Notes
---------	--------	-----------------	-------	-------------	---------------	------	-------------	-----	-----------	-------

Batch B1F0914 - EPA 3550B

Matrix Spike Dup (B1F0914-MSD1)		Source: Y106183-03			Prepared: 06/09/2021 Analyzed: 06/09/2021					
Diesel (C10-C28)	835	50.0	mg/kg	1000	ND	83.5	70-130	16.9	35	
Residual Range Organics (C28-C40)	895	200	"	1000	45.5	85.0	70-130	16.1	35	
Surrogate: o-Terphenyl	45		"	50.0		89.2	50-150			

Origins Laboratory, Inc.



Jen Pellegrini, Project Manager

The results in this report apply to the samples analyzed in accordance with the chain of custody document. This analytical report must be reproduced in its entirety.

Entrada Consulting Group
330 Grand Ave. Unit C
Grand Junction CO 81501

Ben Baugh
Project Number: 021-060
Project: Kielian 2-2 TB

Extractable Petroleum Hydrocarbons by 8015D - Quality Control

Origins Laboratory, Inc.

Analyte	Result	Reporting Limit	Units	Spike Level	Source Result	%REC	%REC Limits	RPD	RPD Limit	Notes
Batch B1F0917 - EPA 5030 (soil)										
Blank (B1F0917-BLK1)					Prepared: 06/09/2021 Analyzed: 06/10/2021					
1,2,4-Trimethylbenzene	ND	0.00200	mg/kg							U
Naphthalene	ND	0.0100	"							U
1,3,5-Trimethylbenzene	ND	0.00200	"							U
Benzene	ND	0.00200	"							U
Ethylbenzene	ND	0.00200	"							U
Toluene	ND	0.00200	"							U
Gasoline Range Hydrocarbons	ND	0.200	"							U
Xylenes, total	ND	0.00200	"							U
Surrogate: 1,2-Dichloroethane-d4	0.13		"	0.125	105		70-130			
Surrogate: Toluene-d8	0.14		"	0.125	112		70-130			
Surrogate: 4-Bromofluorobenzene	0.13		"	0.125	101		70-130			

Origins Laboratory, Inc.



Jen Pellegrini, Project Manager

The results in this report apply to the samples analyzed in accordance with the chain of custody document. This analytical report must be reproduced in its entirety.

Entrada Consulting Group
330 Grand Ave. Unit C
Grand Junction CO 81501

Ben Baugh
Project Number: 021-060
Project: Kielian 2-2 TB

Volatile Organic Compounds by GC/MS SW846 8260D - Quality Control
Origins Laboratory, Inc.

Analyte	Result	Reporting Limit	Units	Spike Level	Source Result	%REC	%REC Limits	RPD	RPD Limit	Notes
Batch B1F0917 - EPA 5030 (soil)										
LCS (B1F0917-BS1)					Prepared: 06/09/2021 Analyzed: 06/10/2021					
1,2,4-Trimethylbenzene	0.0592	0.00200	mg/kg	0.0500		118	70-130			
Naphthalene	0.0540	0.0100	"	0.0500		108	70-130			
1,3,5-Trimethylbenzene	0.0594	0.00200	"	0.0500		119	70-130			
Benzene	0.0466	0.00200	"	0.0500		93.2	70-130			
Ethylbenzene	0.0591	0.00200	"	0.0500		118	70-130			
m,p-Xylene	0.118	0.00400	"	0.100		118	70-130			
o-Xylene	0.0554	0.00200	"	0.0500		111	70-130			
Toluene	0.0549	0.00200	"	0.0500		110	70-130			
Surrogate: 1,2-Dichloroethane-d4	0.14		"	0.125		112	70-130			
Surrogate: Toluene-d8	0.14		"	0.125		111	70-130			
Surrogate: 4-Bromofluorobenzene	0.13		"	0.125		102	70-130			

Origins Laboratory, Inc.



Jen Pellegrini, Project Manager

The results in this report apply to the samples analyzed in accordance with the chain of custody document. This analytical report must be reproduced in its entirety.

Entrada Consulting Group
330 Grand Ave. Unit C
Grand Junction CO 81501

Ben Baugh
Project Number: 021-060
Project: Kielian 2-2 TB

Volatile Organic Compounds by GC/MS SW846 8260D - Quality Control
Origins Laboratory, Inc.

Analyte	Result	Reporting Limit	Units	Spike Level	Source Result	%REC	%REC Limits	RPD	RPD Limit	Notes
Batch B1F0917 - EPA 5030 (soil)										
Matrix Spike (B1F0917-MS1)		Source: Y106178-01			Prepared: 06/09/2021 Analyzed: 06/10/2021					
1,2,4-Trimethylbenzene	0.0622	0.00200	mg/kg	0.0500	ND	124	70-130			
Naphthalene	0.0503	0.0100	"	0.0500	0.00162	97.3	70-130			
1,3,5-Trimethylbenzene	0.0626	0.00200	"	0.0500	ND	125	70-130			
Benzene	0.0500	0.00200	"	0.0500	ND	100	70-130			
Ethylbenzene	0.0618	0.00200	"	0.0500	ND	124	70-130			
m,p-Xylene	0.124	0.00400	"	0.100	ND	124	70-130			
o-Xylene	0.0580	0.00200	"	0.0500	ND	116	70-130			
Toluene	0.0584	0.00200	"	0.0500	ND	117	70-130			
Surrogate: 1,2-Dichloroethane-d4	0.13		"	0.125		107	70-130			
Surrogate: Toluene-d8	0.14		"	0.125		111	70-130			
Surrogate: 4-Bromofluorobenzene	0.13		"	0.125		102	70-130			

Origins Laboratory, Inc.



Jen Pellegrini, Project Manager

The results in this report apply to the samples analyzed in accordance with the chain of custody document. This analytical report must be reproduced in its entirety.

Entrada Consulting Group
330 Grand Ave. Unit C
Grand Junction CO 81501

Ben Baugh
Project Number: 021-060
Project: Kielian 2-2 TB

Volatile Organic Compounds by GC/MS SW846 8260D - Quality Control
Origins Laboratory, Inc.

Analyte	Result	Reporting Limit	Units	Spike Level	Source Result	%REC	%REC Limits	RPD	RPD Limit	Notes
Batch B1F0917 - EPA 5030 (soil)										
Matrix Spike Dup (B1F0917-MSD1)		Source: Y106178-01			Prepared: 06/09/2021 Analyzed: 06/10/2021					
1,2,4-Trimethylbenzene	0.0541	0.00200	mg/kg	0.0500	ND	108	70-130	13.8	20	
Naphthalene	0.0437	0.0100	"	0.0500	0.00162	84.2	70-130	14.0	20	
1,3,5-Trimethylbenzene	0.0547	0.00200	"	0.0500	ND	109	70-130	13.5	20	
Benzene	0.0447	0.00200	"	0.0500	ND	89.4	70-130	11.1	20	
Ethylbenzene	0.0550	0.00200	"	0.0500	ND	110	70-130	11.5	20	
m,p-Xylene	0.110	0.00400	"	0.100	ND	110	70-130	11.9	20	
o-Xylene	0.0515	0.00200	"	0.0500	ND	103	70-130	11.9	20	
Toluene	0.0517	0.00200	"	0.0500	ND	103	70-130	12.2	20	
Surrogate: 1,2-Dichloroethane-d4	0.13		"	0.125		106	70-130			
Surrogate: Toluene-d8	0.14		"	0.125		111	70-130			
Surrogate: 4-Bromofluorobenzene	0.13		"	0.125		103	70-130			

Origins Laboratory, Inc.



Jen Pellegrini, Project Manager

The results in this report apply to the samples analyzed in accordance with the chain of custody document. This analytical report must be reproduced in its entirety.

Entrada Consulting Group

330 Grand Ave. Unit C

Grand Junction CO 81501

Ben Baugh

Project Number: 021-060

Project: Kielian 2-2 TB

Volatile Organic Compounds by GC/MS SW846 8260D - Quality Control

Origins Laboratory, Inc.

Analyte	Result	Reporting Limit	Units	Spike Level	Source Result	%REC	%REC Limits	RPD	RPD Limit	Notes
---------	--------	-----------------	-------	-------------	---------------	------	-------------	-----	-----------	-------

Batch B1F1005 - EPA 3550B

Blank (B1F1005-BLK1)

Prepared: 06/10/2021 Analyzed: 06/11/2021

Diesel (C10-C28)	ND	50.0	mg/kg							U
Residual Range Organics (C28-C40)	ND	200	"							U
Surrogate: o-Terphenyl	41		"	50.0		81.7	50-150			

Origins Laboratory, Inc.



Jen Pellegrini, Project Manager

The results in this report apply to the samples analyzed in accordance with the chain of custody document. This analytical report must be reproduced in its entirety.

Entrada Consulting Group

330 Grand Ave. Unit C

Grand Junction CO 81501

Ben Baugh

Project Number: 021-060

Project: Kielian 2-2 TB

Extractable Petroleum Hydrocarbons by 8015D - Quality Control

Origins Laboratory, Inc.

Analyte	Result	Reporting Limit	Units	Spike Level	Source Result	%REC	%REC Limits	RPD	RPD Limit	Notes
---------	--------	-----------------	-------	-------------	---------------	------	-------------	-----	-----------	-------

Batch B1F1005 - EPA 3550B

LCS (B1F1005-BS1)

Prepared: 06/10/2021 Analyzed: 06/10/2021

Diesel (C10-C28)	990	50.0	mg/kg	1000		99.0	70-130			
Residual Range Organics (C28-C40)	951	200	"	1000		95.1	70-130			
Surrogate: o-Terphenyl	44		"	50.0		88.2	50-150			

Origins Laboratory, Inc.



Jen Pellegrini, Project Manager

The results in this report apply to the samples analyzed in accordance with the chain of custody document. This analytical report must be reproduced in its entirety.

Entrada Consulting Group

330 Grand Ave. Unit C

Grand Junction CO 81501

Ben Baugh

Project Number: 021-060

Project: Kielian 2-2 TB

Extractable Petroleum Hydrocarbons by 8015D - Quality Control

Origins Laboratory, Inc.

Analyte	Result	Reporting Limit	Units	Spike Level	Source Result	%REC	%REC Limits	RPD	RPD Limit	Notes
---------	--------	-----------------	-------	-------------	---------------	------	-------------	-----	-----------	-------

Batch B1F1005 - EPA 3550B

Matrix Spike (B1F1005-MS1)		Source: Y106200-01			Prepared: 06/10/2021 Analyzed: 06/10/2021					
Diesel (C10-C28)	1020	50.0	mg/kg	1000	ND	102	70-130			
Residual Range Organics (C28-C40)	1020	200	"	1000	56.5	96.2	70-130			
Surrogate: o-Terphenyl	42		"	50.0		83.1	50-150			

Origins Laboratory, Inc.



Jen Pellegrini, Project Manager

The results in this report apply to the samples analyzed in accordance with the chain of custody document. This analytical report must be reproduced in its entirety.

Entrada Consulting Group

330 Grand Ave. Unit C

Grand Junction CO 81501

Ben Baugh

Project Number: 021-060

Project: Kielian 2-2 TB

Extractable Petroleum Hydrocarbons by 8015D - Quality Control
Origins Laboratory, Inc.

Analyte	Result	Reporting Limit	Units	Spike Level	Source Result	%REC	%REC Limits	RPD	RPD Limit	Notes
---------	--------	-----------------	-------	-------------	---------------	------	-------------	-----	-----------	-------

Batch B1F1005 - EPA 3550B

Matrix Spike Dup (B1F1005-MSD1)		Source: Y106200-01			Prepared: 06/10/2021 Analyzed: 06/10/2021					
Diesel (C10-C28)	1050	50.0	mg/kg	1000	ND	105	70-130	2.87	35	
Residual Range Organics (C28-C40)	1110	200	"	1000	56.5	105	70-130	8.44	35	
Surrogate: o-Terphenyl	42		"	50.0		84.6	50-150			

Origins Laboratory, Inc.



Jen Pellegrini, Project Manager

The results in this report apply to the samples analyzed in accordance with the chain of custody document. This analytical report must be reproduced in its entirety.

Entrada Consulting Group
330 Grand Ave. Unit C
Grand Junction CO 81501

Ben Baugh
Project Number: 021-060
Project: Kielian 2-2 TB

Extractable Petroleum Hydrocarbons by 8015D - Quality Control

Origins Laboratory, Inc.

Analyte	Result	Reporting Limit	Units	Spike Level	Source Result	%REC	%REC Limits	RPD	RPD Limit	Notes
---------	--------	-----------------	-------	-------------	---------------	------	-------------	-----	-----------	-------

PAH by 8270D SIM - Quality Control

Waypoint Analytical, Inc.

Analyte	Result	Reporting Limit	Units	Spike Level	Source Result	%REC	%REC Limits	RPD	RPD Limit	Notes
---------	--------	-----------------	-------	-------------	---------------	------	-------------	-----	-----------	-------

Batch L557994 - 3550B

MSD (L 93801-MSD-L557994)		Source: 93801			Prepared: 06/11/2021 Analyzed: 06/11/2021					
Pyrene	0.115	0.000387	mg/Kg	0.166	0.000413	69.2	30-130	25	30	
Naphthalene	0.0895	0.000467	"	0.166	<0.000467	53.9	30-130	28.2	30	
Chrysene	0.106	0.000256	"	0.166	<0.000256	63.8	30-130	21.8	30	
Acenaphthene	0.1	0.000431	"	0.166	<0.000431	60.2	30-130	26	30	
Anthracene	0.11	0.000426	"	0.166	<0.000426	66.2	30-130	28.1	30	
Surrogate: 4-Terphenyl-d14	78		"	0.332	231	78	33-122			
Surrogate: Nitrobenzene-d5	61.7		"	0.332	165	61.7	29-110			
Surrogate: 2-Fluorobiphenyl	76.2		"	0.332	220	76.2	33-115			

MS (L 93801-MS-L557994)		Source: 93801			Prepared: 06/11/2021 Analyzed: 06/11/2021					
Chrysene	0.132	0.000256	mg/Kg	0.166	<0.000256	79.5	30-130			
Anthracene	0.146	0.000426	"	0.166	<0.000426	87.9	30-130			
Pyrene	0.148	0.000387	"	0.166	0.000413	89.1	30-130			
Acenaphthene	0.13	0.000431	"	0.166	<0.000431	78.3	30-130			
Naphthalene	0.119	0.000467	"	0.166	<0.000467	71.6	30-130			
Surrogate: Nitrobenzene-d5	63.4		"	0.331	165	63.4	29-110			
Surrogate: 4-Terphenyl-d14	74.6		"	0.331	231	74.6	33-122			
Surrogate: 2-Fluorobiphenyl	76.4		"	0.331	220	76.4	33-115			

LCS (LCS-L557994)		Prepared: 06/11/2021 Analyzed: 06/11/2021								
Naphthalene	0.118	0.000467	mg/Kg	0.167		70.6	30-130			
Chrysene	0.137	0.000256	"	0.167		82	30-130			

Origins Laboratory, Inc.



Jen Pellegrini, Project Manager

The results in this report apply to the samples analyzed in accordance with the chain of custody document. This analytical report must be reproduced in its entirety.

Entrada Consulting Group
330 Grand Ave. Unit C
Grand Junction CO 81501

Ben Baugh
Project Number: 021-060
Project: Kielian 2-2 TB

PAH by 8270D SIM - Quality Control
Waypoint Analytical, Inc.

Analyte	Result	Reporting Limit	Units	Spike Level	Source Result	%REC	%REC Limits	RPD	RPD Limit	Notes
---------	--------	-----------------	-------	-------------	---------------	------	-------------	-----	-----------	-------

Batch L557994 - 3550B

LCS (LCS-L557994)

Prepared: 06/11/2021 Analyzed: 06/11/2021

Anthracene	0.146	0.000426	mg/Kg	0.167		87.4	30-130			
Acenaphthene	0.131	0.000431	"	0.167		78.4	30-130			
Pyrene	0.148	0.000387	"	0.167		88.6	30-130			
Surrogate: Nitrobenzene-d5	61.2		"	0.333		61.2	29-110			
Surrogate: 4-Terphenyl-d14	76.2		"	0.333		76.2	33-122			
Surrogate: 2-Fluorobiphenyl	75.6		"	0.333		75.6	33-115			

LRB (LRB-L557994)

Prepared: 06/11/2021 Analyzed: 06/11/2021

Pyrene	ND	0.00067	mg/Kg				-			
Acenaphthene	ND	0.00067	"				-			
Anthracene	ND	0.00067	"				-			
Chrysene	ND	0.00067	"				-			
Naphthalene	ND	0.00067	"				-			
Surrogate: 2-Fluorobiphenyl	69		"	0.333		69	33-115			
Surrogate: 4-Terphenyl-d14	71.1		"	0.333		71.1	33-122			
Surrogate: Nitrobenzene-d5	51.9		"	0.333		51.9	29-110			

Origins Laboratory, Inc.



Jen Pellegrini, Project Manager

The results in this report apply to the samples analyzed in accordance with the chain of custody document. This analytical report must be reproduced in its entirety.

Entrada Consulting Group
330 Grand Ave. Unit C
Grand Junction CO 81501

Ben Baugh
Project Number: 021-060
Project: Kielian 2-2 TB

Notes and Definitions

U Sample is Non-Detect.

R-01 The Reporting Limit for this analyte has been raised to account for matrix interference.

J Estimated Value. Analyte below reported quantitation limit.

ND Analyte NOT DETECTED at or above the reporting limit

RPD Relative Percent Difference

All soil results are reported on a wet weight basis.

Origins Laboratory, Inc.



Jen Pellegrini, Project Manager

The results in this report apply to the samples analyzed in accordance with the chain of custody document. This analytical report must be reproduced in its entirety.