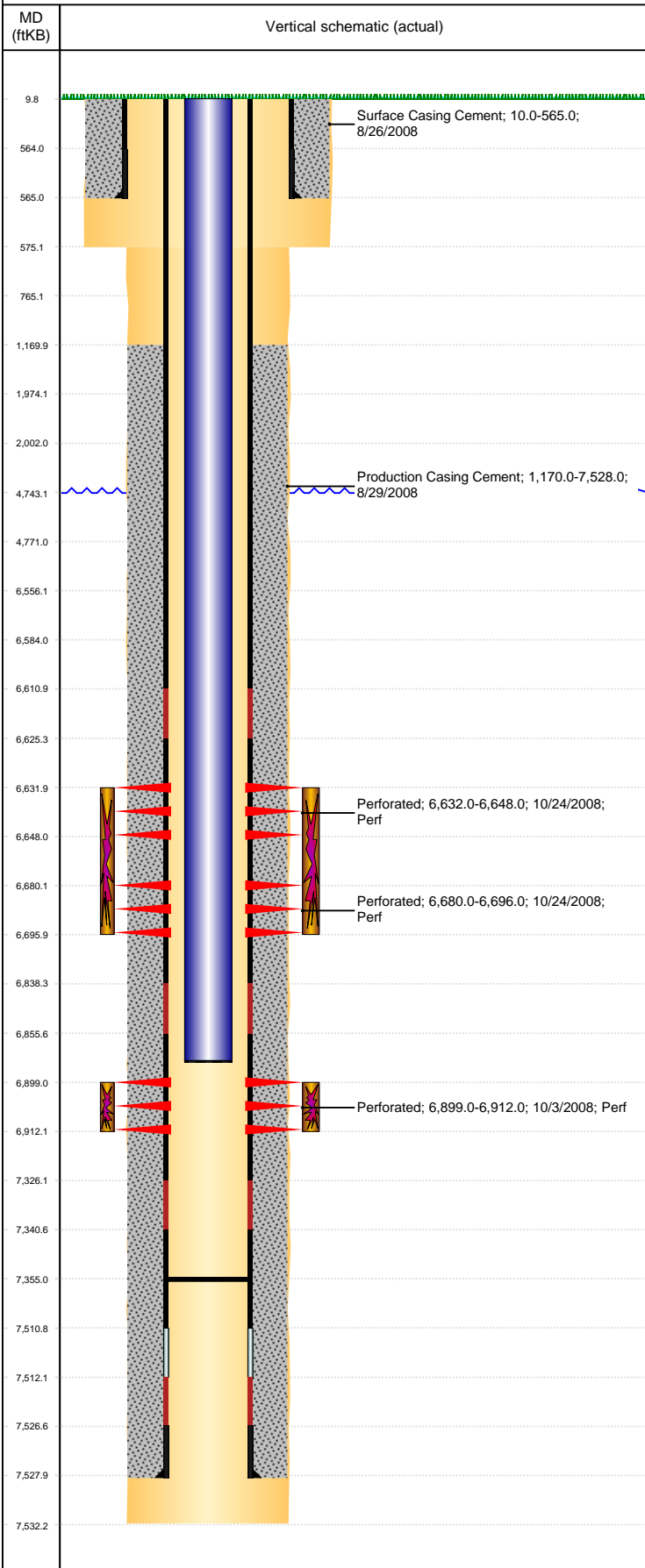


Well Name: GUTTERSEN D09-09

VERTICAL, ORIGINAL HOLE, 7/20/2021 5:15:21 PM



Well Header									
API 05-123-26910			Business Unit DJ BASIN			District 15		Well Config VERTICAL	
KB - GL / MSL (ft... 10.00		Spud Date 8/25/2008		P & A Date		Well Production Status PR			SoRT No
Comment LOCATION CHANGED; SUNDRY SENT TO COGCC 7/31/08!									
Surface Location (Congressional)									
Qtr 3 NE	Qtr 4 SE	Section 9	Twonshp 3	Twonsh... N	Range 64	Rng E... W	Actual Latitude (°) 40.23861655	Actual Longitude (°) -104.54853657	
Wellbore Sections									
Section Des			Size (in)			Act Top, MD (ftKB)		Act Btm, MD (ftKB)	
SURFACE			12 1/4			10		575	
PRODUCTION			7 7/8			575		7,532	
Casing Strings									
Csg Des			Run Date		OD (in)	Wt/Len (lb/ft)	Grade	Top, MD (ftKB)	MD (ftKB)
Surface			8/25/2008		8 5/8	24.00	J-55	10.0	565.0
Production			8/29/2008		4 1/2	11.60	M-80	10.0	7,528.0
Cement									
Des					Start Date		Top (ftKB)		Btm (ftKB)
Surface Casing Cement					8/26/2008		10.0		565.0
Production Casing Cement					8/29/2008		1,170.0		7,528.0
Zone Statuses									
Zone Name	Status Date	Status	Fluid Type	Job				Prod Method	
CODELL	12/1/2008	PR	Water	DRILLING/COMPLETION - ORIGINAL, 8/24/2008...				Flowing	
CODELL	3/11/2010	PR							
NIOBRARA	11/29/2016	SI							
NIOBRARA	4/13/2017	PR							
Perforation Data									
Linked Zone			Bnch/Stg	Entered Shot Total	Top (ftKB)		Btm (ftKB)		Date
NIOBRARA, ORIGINAL HOLE			A	32	6,632.00		6,648.00		10/24/2008
NIOBRARA, ORIGINAL HOLE			B	32	6,680.00		6,696.00		10/24/2008
CODELL, ORIGINAL HOLE				52	6,899.00		6,912.00		10/3/2008
Stimulation Intervals									
Zone				Start Date		Top (ftKB)		Btm (ftKB)	
NIOBRARA, ORIGINAL HOLE				10/24/2008		6,632.0		6,696.0	
CODELL, ORIGINAL HOLE				10/24/2008		6,899.0		6,912.0	
Other In Hole									
Run Date			Des			OD (in)	Top (ftKB)	Btm (ftKB)	
Logs									
Date		Type				Top, MD (ftKB)		Btm, MD (ftKB)	
8/29/2008		Caliper/Comp. Density/Neutron/GR/SP/ML				2,725.0		7,512.0	
8/29/2008		DIL/GR/SP/Caliper				571.0		7,532.0	
9/5/2008		CBL/CCL/GR				950.0		7,480.0	
Plug Back Total Depths									
Date		Type		Com				Depth (ftKB)	
9/5/2008		FILL						7,482.0	
1/27/2009		PLUG REMNANTS						7,355.0	