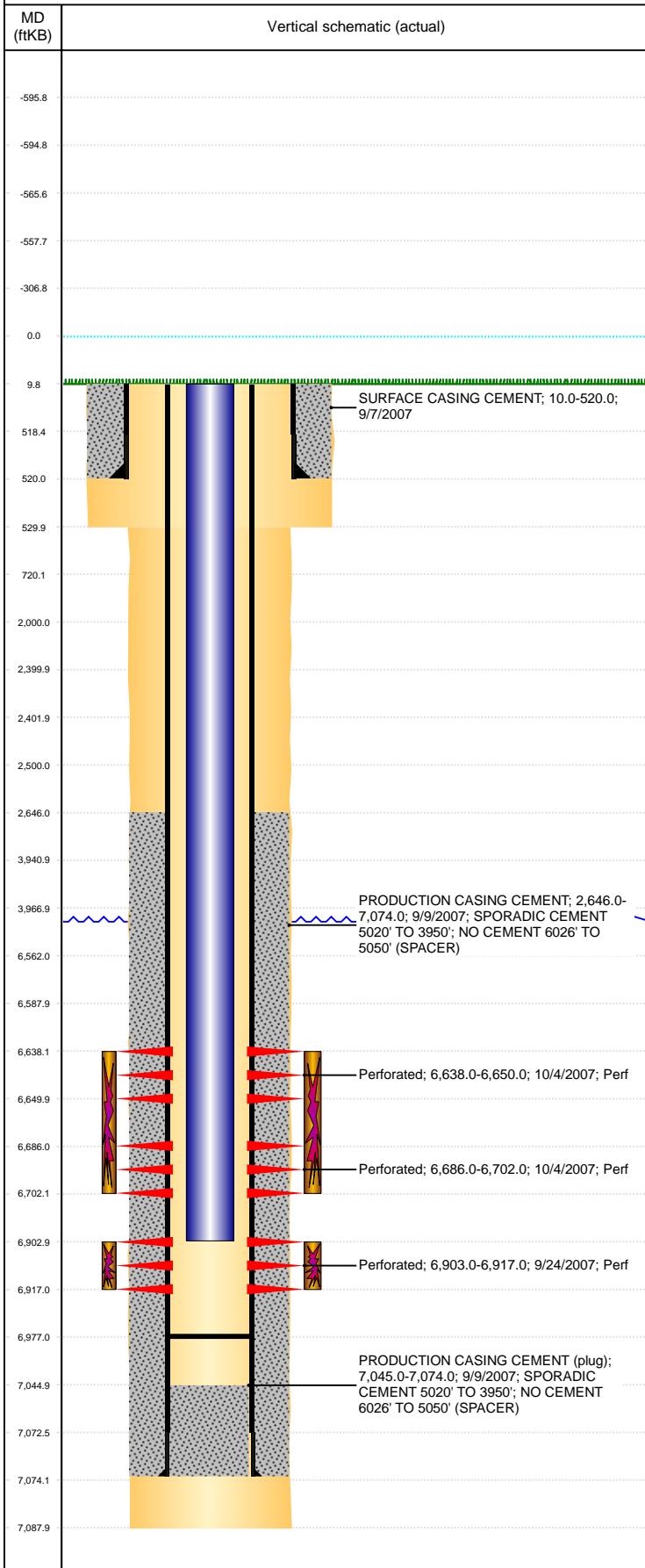


Well Name: ROADHOUSE D09-17

VERTICAL, ORIGINAL HOLE, 7/13/2021 3:13:41 PM



Well Header									
API 05-123-25244		Business Unit DJ BASIN			District 15		Well Config VERTICAL		
KB - GL / MSL (ft... 10.00		Spud Date 9/5/2007		P & A Date		Well Production Status SI			SoRT No
Comment DISCREPANCY: DR RPT/LOGS TD 7087'; ST RPT TD 7068'									
Surface Location (Congressional)									
Qtr 3 NE	Qtr 4 NE	Section 9	Twnshp 3	Twنش... N	Range 64	Rng E/... W	Actual Latitude (°) 40.24364012	Actual Longitude (°) -104.55119248	
Wellbore Sections									
Section Des			Size (in)			Act Top, MD (ftKB)		Act Btm, MD (ftKB)	
SURFACE			12 1/4			10		530	
PRODUCTION			7 7/8			530		7,088	
Casing Strings									
Csg Des			Run Date		OD (in)	Wt/Len (lb/ft)	Grade	Top, MD (ftKB)	MD (ftKB)
Surface			9/7/2007		8 5/8	24.00	?	10.0	520.0
Production			9/9/2007		4 1/2	11.60	M-80	10.0	7,074.0
Cement									
Des					Start Date		Top (ftKB)		Btm (ftKB)
SURFACE CASING CEMENT					9/7/2007		10.0		520.0
PRODUCTION CASING CEMENT					9/9/2007		2,646.0		7,074.0
Zone Statuses									
Zone Name	Status Date	Status	Fluid Type	Job				Prod Method	
CODELL	10/10/2007	PR	Water Water	DRILLING/COMPLETION - ORIGINAL, 9/5/2007...				Flowing Flowing	
CODELL	7/10/2009	PR							
NIOBRARA	7/10/2009	PR							
NIOBRARA	5/9/2017	SI							
Perforation Data									
Linked Zone		Bnch/Stg	Entered Shot Total	Top (ftKB)		Btm (ftKB)		Date	
NIOBRARA, ORIGINAL HOLE			48	6,638.00		6,650.00		10/4/2007	
NIOBRARA, ORIGINAL HOLE			64	6,686.00		6,702.00		10/4/2007	
CODELL, ORIGINAL HOLE			56	6,903.00		6,917.00		9/24/2007	
Stimulation Intervals									
Zone				Start Date		Top (ftKB)		Btm (ftKB)	
NIOBRARA, ORIGINAL HOLE				10/4/2007		6,638.0		6,702.0	
CODELL, ORIGINAL HOLE				10/4/2007		6,903.0		6,917.0	
Other In Hole									
Run Date		Des			Make		OD (in)	Top (ftKB)	Btm (ftKB)
Logs									
Date		Type				Top, MD (ftKB)		Btm, MD (ftKB)	
9/9/2007		COMPENSATED DENSITY				2,940.0		7,067.0	
9/9/2007		INDUCTION				520.0		7,087.0	
9/20/2007		CBL/CCL/GR				2,500.0		7,038.0	
Plug Back Total Depths									
Date		Type		Com				Depth (ftKB)	
9/9/2007		FILL		DEPTH LOGGER ON CBL				7,087.0	
3/27/2008		PLUG REMNANTS		DRILL PLUG FREE AND PUSH DOWN TO 6977'				6,977.0	