

Inspection Photos

7/14/2021

Operator: SWN PRODUCTION COMPANY LLC

#10396

Location ID: 438248

Moffat County, CO

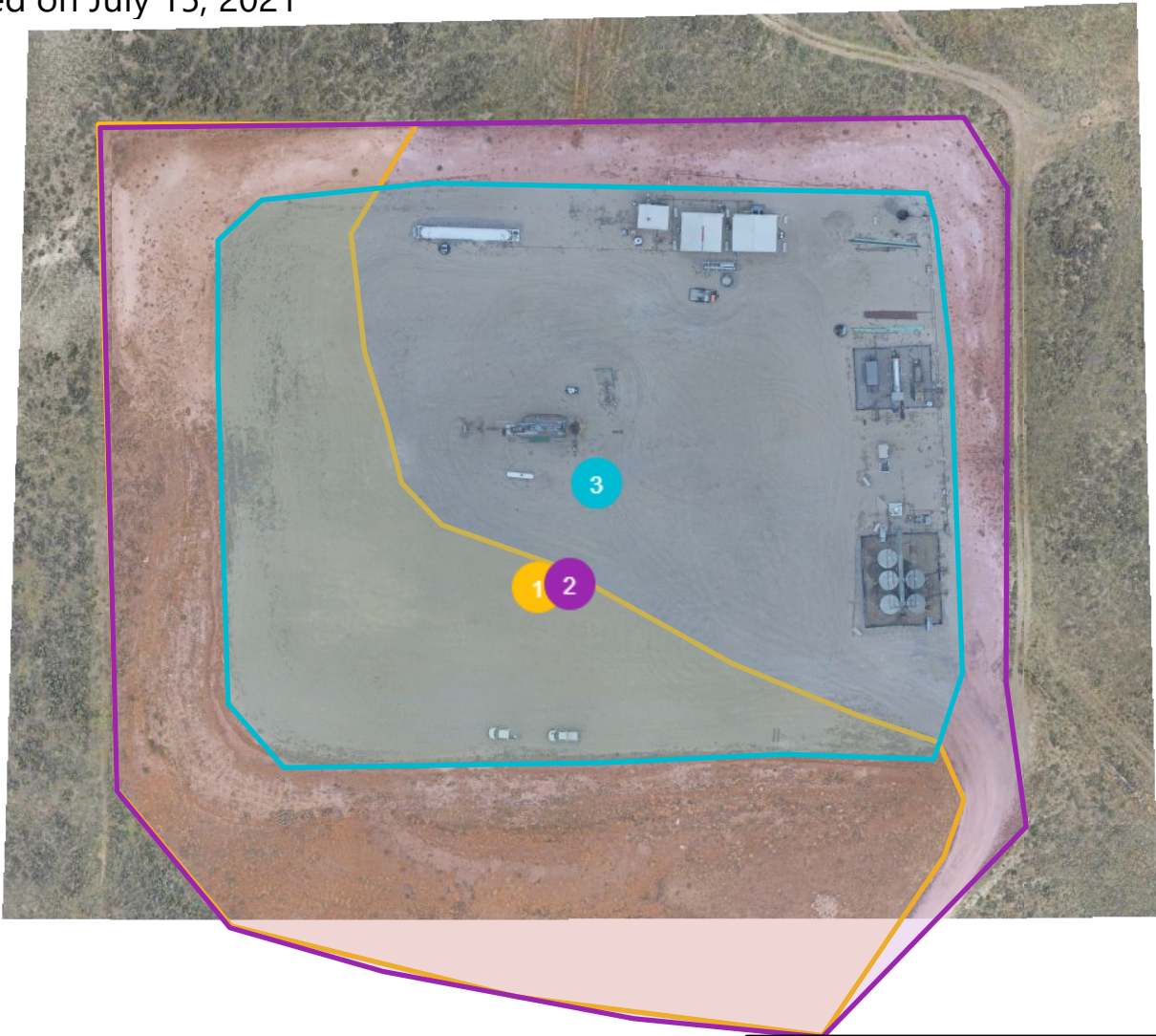
Aaron Trujillo
NW Reclamation Specialist
COGCC

Colorado Oil and Gas Conservation Commission

SWN- Diamond T, #438248

Inspection and Issue Report

Created on July 15, 2021



Aerial image of the Location. Photo shows disturbance area during construction, current pad, and areas not needed for production. Interim reclamation of the Location has not been conducted in accordance with COGCC 1003 Rules

Label	Title	Area	Surface Area
1	Approximate areas requiring 1003 reclamation (75 foot buffer around well)	3.76 acres	4.02 acres
2	Approximate disturbance area	6.79 acres	7.40 acres
3	Current Pad/Production Area: Location size post inteirm = 2 acres	3.71 acres	4.02 acres

Inspection Photos

Operator Name: SWN PRODUCTION COMPANY LLC #10396

Location ID: 438248



July 14, 2021
40.53395717N 107.6934354W

Photo 1: Photo taken from the south end of the Location, facing west. Photos 1-4 provide an overview of the Location from west, northwest, northeast to east. Photos show interim reclamation of areas not necessary for production, has not been performed in accordance with COGCC 1003 Rules.

Inspection Photos

Operator Name: SWN PRODUCTION COMPANY LLC #10396

Location ID: 438248



July 14, 2021
40.53390812N 107.69342592W

Photo 2: See comments under photo 1.

Inspection Photos

Operator Name: SWN PRODUCTION COMPANY LLC #10396

Location ID: 438248



Photo 3: See comments under photo 1.

Inspection Photos

Operator Name: SWN PRODUCTION COMPANY LLC #10396

Location ID: 438248



Photo 4: See comments under photo 1.



COLORADO
Oil & Gas Conservation
Commission
Department of Natural Resources

Inspection Photos
Operator Name: SWN PRODUCTION COMPANY LLC #10396
Location ID: 438248

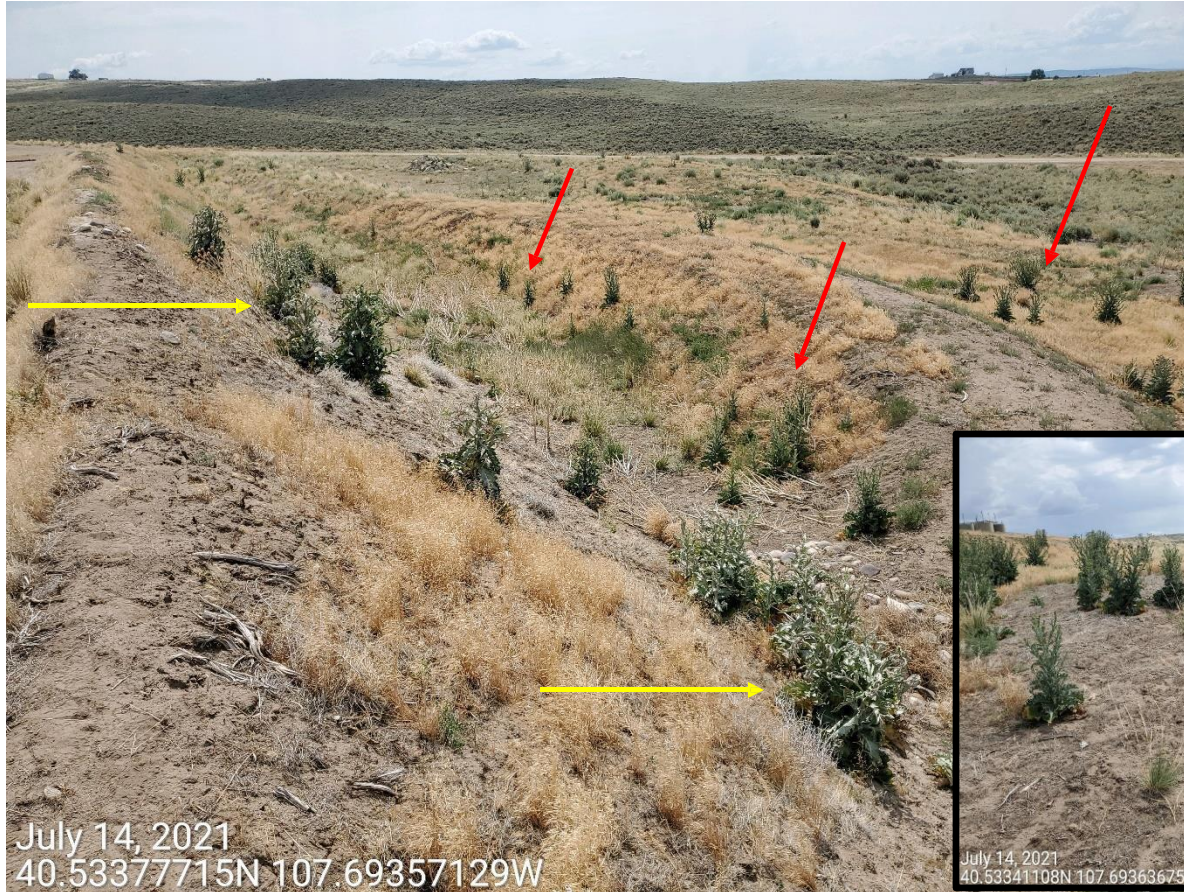


Photo 5: Photo taken from the south end of the Location, facing east. Photo shows example of undesirable and noxious weed (Scotch thistle) establishment observed on the Location; noxious and undesirable weeds observed on all areas of the Location Photo also shows weed establishment on the topsoil stockpile. Noxious weeds on the fill slope (yellow) do show signs of senescence/wilting and may have been sprayed, however, weeds beyond the fill slope (red) do not show signs that weed management was performed. Noxious weed management and protection of soils inadequate. Inset photo (bottom right) shows noxious weeds on topsoil stockpile. Photo also shows topsoil pile has been incorporated as part of a stormwater retention pond.

Inspection Photos

Operator Name: SWN PRODUCTION COMPANY LLC #10396

Location ID: 438248



Photo 6: Photo taken from the west end of the Location, facing south. Photo shows noxious weed establishment on the Location.

Inspection Photos

Operator Name: SWN PRODUCTION COMPANY LLC #10396

Location ID: 438248



Photo 7: Photo taken from the south end of the Location, facing south. Photo shows noxious weeds from the Location appear to be encroaching onto the adjacent lands.

Inspection Photos

Operator Name: SWN PRODUCTION COMPANY LLC #10396

Location ID: 438248



July 14, 2021
40.53344855N 107.69251495W

Photo 8: Photo shows concrete debris stored on the southeast end of the Location.

Inspection Photos
Operator Name: SWN PRODUCTION COMPANY LLC #10396
Location ID: 438248



Photo 9: Photo taken from the southeast end of the Location, facing west. Photo shows example of undesirable plant (Russian thistle) establishment and weed debris accumulation observed throughout the Location. Inset photo (bottom right) provides example of weed debris around equipment.

Inspection Photos

Operator Name: SWN PRODUCTION COMPANY LLC #10396

Location ID: 438248



Photo 10: Photo taken from the west end of the Location, facing south. Photo shows stormwater ditch and velocity checks (straw wattles). BMPs has not been maintained and is no longer in proper functioning condition; erosion degradation with ditch evident.

Inspection Photos

Operator Name: SWN PRODUCTION COMPANY LLC #10396

Location ID: 438248

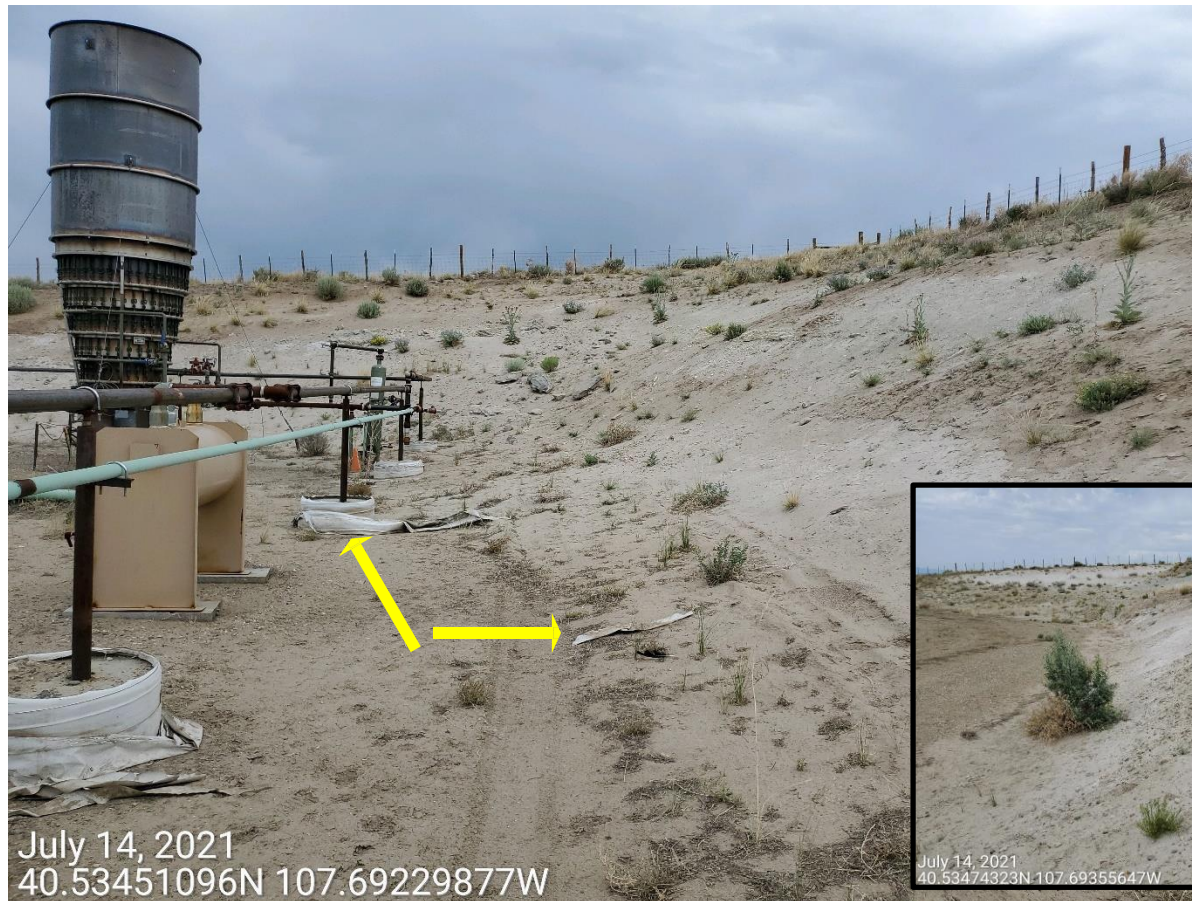


Photo 11: Photo taken from the cut slopes on the east end of the Location, facing north. Soils on slopes bare with a loose and powdery texture; soils at risk to wind erosion. Control measures to stabilize and protect slopes of the Location missing, or inadequate in accordance with Rule 1002.f.(2)C. Photo insert (bottom right) shows cut slopes on the north/northwest end of the Location. Photo also shows trash debris observed on Location.



Photo 12: Photo taken from well 081-07817. Photo shows an ongoing release at the well of E&P waste resulting in impacted soils. 6 foot measuring stick for reference.

Inspection Photos

Operator Name: SWN PRODUCTION COMPANY LLC #10396

Location ID: 438248



Photo 13: Photo shows ongoing release of E&P fluids.

Inspection Photos

Operator Name: SWN PRODUCTION COMPANY LLC #10396

Location ID: 438248



Photo 14: Photo taken from the southwest end of well 081-07817. Photo shows petroleum, oils and lubes ("POLs") leaking from pump jack motor. Repair and stop leaks, and comply with Ruled 906.a-d

14 - Leak OPEN

Jul 14, 2021 at 11:48am



Photo 15: Photo taken from the pump jack muffler of well 081-07817. Inset photo (bottom right) shows Operator has placed a container in an attempt to capture fluids from the pipe. Photo also shows stained soils observed around area. No safety labeling applied identifying fluids within container. No Wildlife protection BMPs have been installed.

Inspection Photos

Operator Name: SWN PRODUCTION COMPANY LLC #10396

Location ID: 438248



Photo 16: Photo taken from in between the two compressor sheds on the north end of the Location. Photo shows 2 partially buried vessels and impacted soils. Photos shows tank labeling is missing/insufficient. 6 foot measuring stick for reference.

Inspection Photos

Operator Name: SWN PRODUCTION COMPANY LLC #10396

Location ID: 438248



Photo 17: Photo taken from the eastern compressor shed on the north end of the Location. Photo shows stained soils within the shed. Inset photo (bottom right) shows additional stained soils observed within the western compressor shed.

Inspection Photos

Operator Name: SWN PRODUCTION COMPANY LLC #10396

Location ID: 438248



Photo 18: Photo taken from northeast corner of the Location. Photo shows Operator has placed a container to capture fluids drained from the scrubber unit. Safety labeling and wildlife protection BMP missing from container. Photo also shows stained soils observed at equipment.

Inspection Photos

Operator Name: SWN PRODUCTION COMPANY LLC #10396

Location ID: 438248



Photo 19: Photo taken from the east end of the Location. Photo shows stock tank containing impacted materials; Operator shall not collect and store E&P waste on the Location; impacted material requires removal. Stock tank is equipment not necessary for production and requires removal.

4 - Leak **OPEN**

Jul 14, 2021 at 11:48am



Type
Leak

Summary
Impacted soils within
containment

Lat/Long
40.53395, -107.69236

Created
Jul 15, 2021 at 8:10am by Aaron Trujillo

3 - Leak **OPEN**

Jul 14, 2021 at 11:48am



Type
Leak

Summary
Impacted soils within
containment

Lat/Long
40.53429, -107.69236

Created
Jul 15, 2021 at 8:08am by Aaron Trujillo

Inspection Photos

Operator Name: SWN PRODUCTION COMPANY LLC #10396

Location ID: 438248



Photo 20: Photo taken from the tank battery on the east end of the Location. Photo shows impacted soils within and throughout the secondary containment. Photo also shows what appears to be weeping fluids at the base of the tanks.

Inspection Photos

Operator Name: SWN PRODUCTION COMPANY LLC #10396

Location ID: 438248



July 14, 2021
40.53400753N 107.69235507W

Photo 21: Photo show catchment basin at the end of the loadout lines. Photo shows impacted materials within the tank battery's secondary containment. White staining on plastic liner observed.

Inspection Photos

Operator Name: SWN PRODUCTION COMPANY LLC #10396

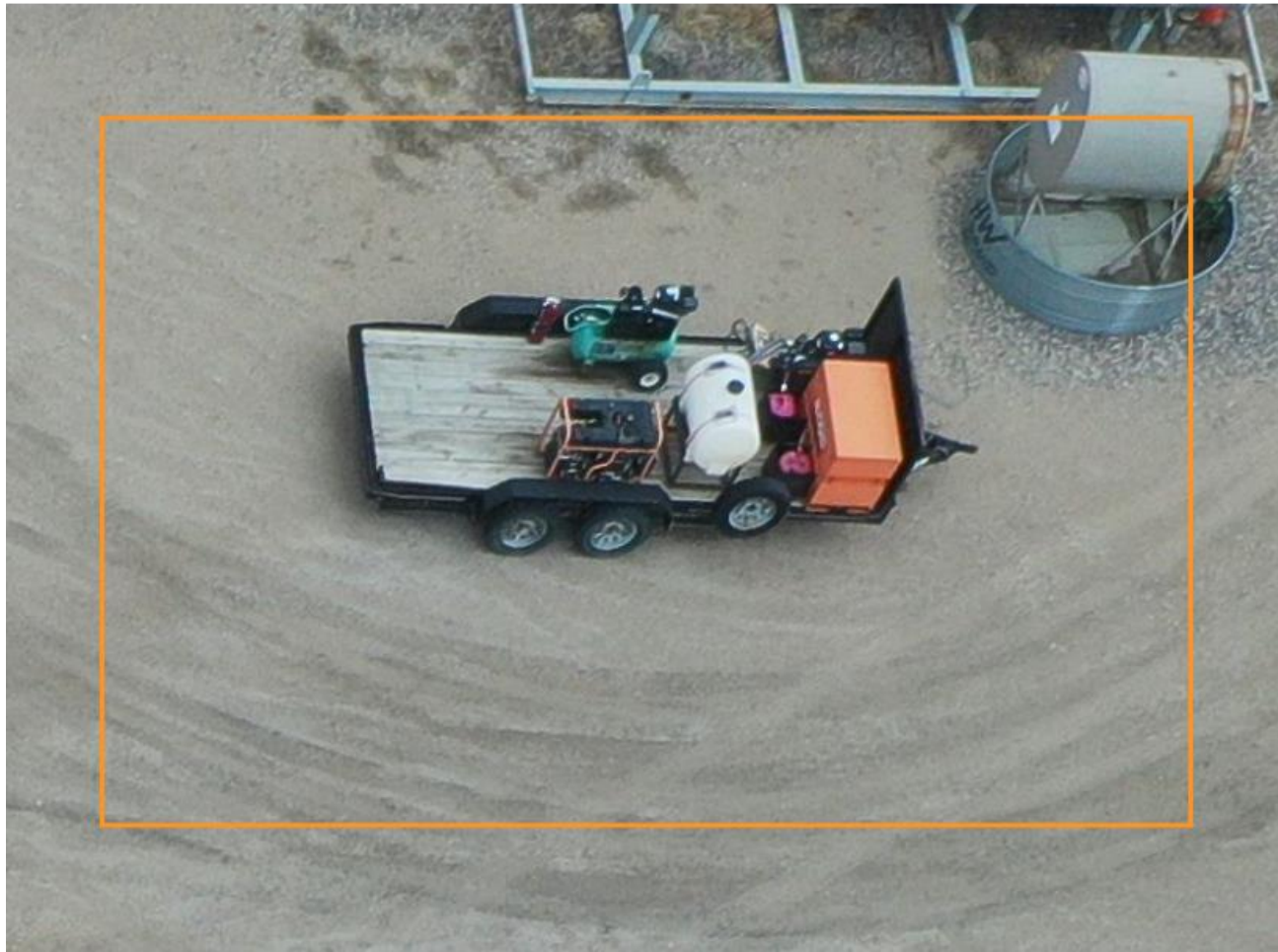
Location ID: 438248



Photo 22: Photo shows unused panel and pipe equipment stored around the well.

27 - Other OPEN

Jul 14, 2021 at 11:48am

**Summary**

Trailer and equipment stored on the Location

Inspection Photos

Operator Name: SWN PRODUCTION COMPANY LLC #10396

Location ID: 438248



Photo 23: Photo taken from the west end of the of the white tank on the north end of the Location. Photo shows various wood debris and unused pipe equipment stored on the Location.

Inspection Photos
Operator Name: SWN PRODUCTION COMPANY LLC #10396
Location ID: 438248



Photo 24: Photo shows unused equipment stored on the northwest end of the Location.

Inspection Photos

Operator Name: SWN PRODUCTION COMPANY LLC #10396

Location ID: 438248

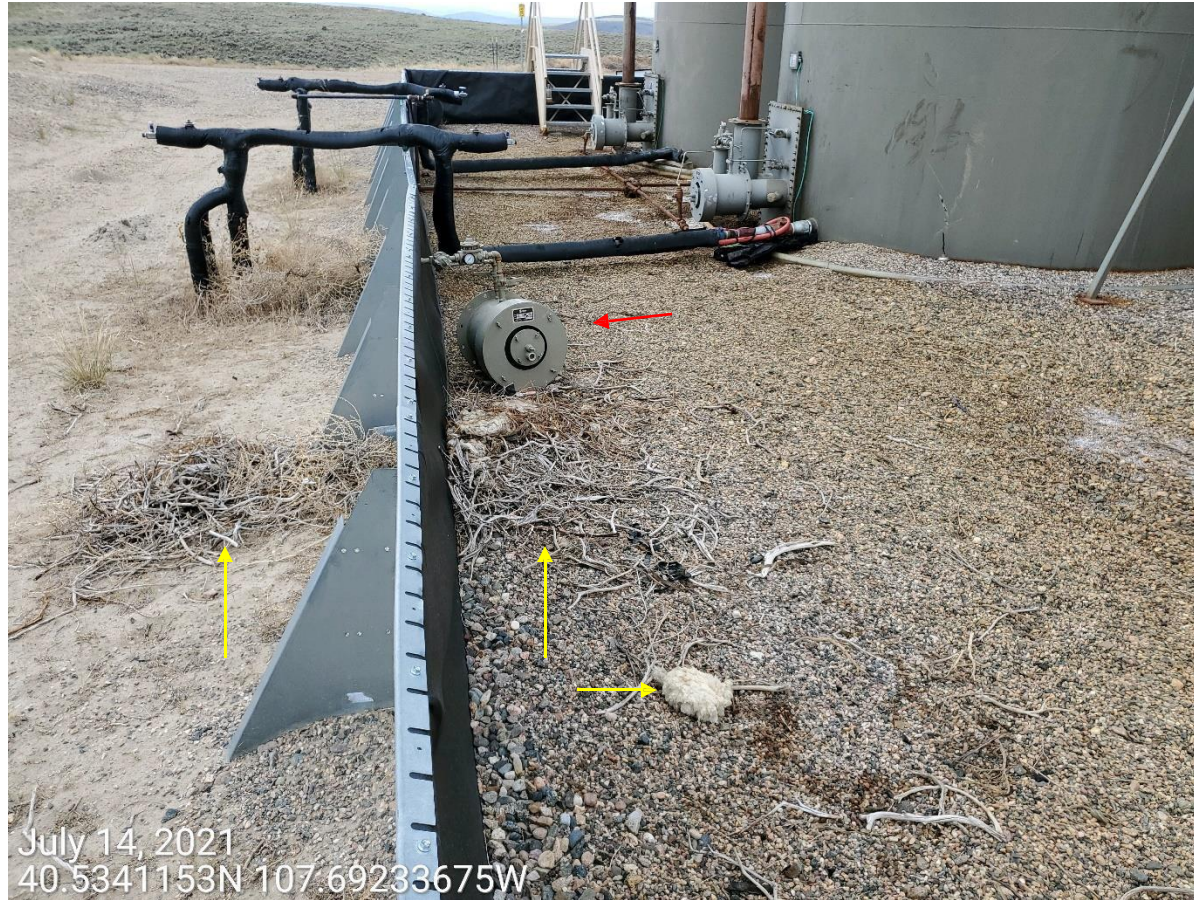


Photo 25: Photo taken from the northeast end of the tank battery, on the east end of the Location, facing south. Photo shows what appears to be a destroyed bird nest; various twigs/woody material, wildlife hair and sheep wool were observed amongst the debris (yellow arrow). Debris requires removal from secondary containment. Photo also shows an unused flame arrestor stored within the secondary containment (red arrow) ; equipment requires removal.

Inspection Photos

Operator Name: SWN PRODUCTION COMPANY LLC #10396

Location ID: 438248



Photo 26: Photo shows a dead bird found amongst the debris observed in within the secondary containment. Bird appears to be a young crow.

Inspection Photos
Operator Name: SWN PRODUCTION COMPANY LLC #10396
Location ID: 438248



Photo 27: Photos show signage at wells and battery (including tanks) with incorrect Operator information; COGCC well file records show Operator as "SWN Production Company LLC #10396".

Inspection Photos
Operator Name: SWN PRODUCTION COMPANY LLC #10396
Location ID: 438248



Photo 28: Photo shows example of tanks observed on Location with insufficient/inadequate labeling. Photo also shows wildlife protection equipment to prevent wildlife access to secondary containment is missing or insufficient.