



Pad Name: Almont-Dotsero 6 South Pad
Well Name: Dotsero 5
Ground Level: 4989.0
SHL Latitude: 40° 35' 55.788 N
SHL Longitude: 104° 35' 4.380 W

SECTION DETAILS

Sec	MD	Inc	Azi	TVD	+N/-S	+E/-W	Dleg	TFace	VSect	Target
1	0.0	0.00	0.00	0.0	0.0	0.0	0.00	0.00	0.0	
2	500.0	0.00	0.00	500.0	0.0	0.0	0.00	0.00	0.0	
3	794.6	5.89	104.67	794.1	-3.8	14.6	2.00	104.67	-14.6	
4	6324.7	5.89	104.67	6295.0	-147.6	563.8	0.00	0.00	-563.0	
5	6619.3	0.00	270.57	6589.0	-151.4	578.5	2.00	180.00	-577.6	
6	7519.3	90.00	270.57	7162.0	-145.7	5.6	10.00	0.00	-4.7	Dotsero 5 LP
7	16908.6	90.00	270.57	7162.0	-52.9	-9383.3	0.00	0.00	9383.4	Dotsero 5 PBHL

DESIGN TARGET DETAILS

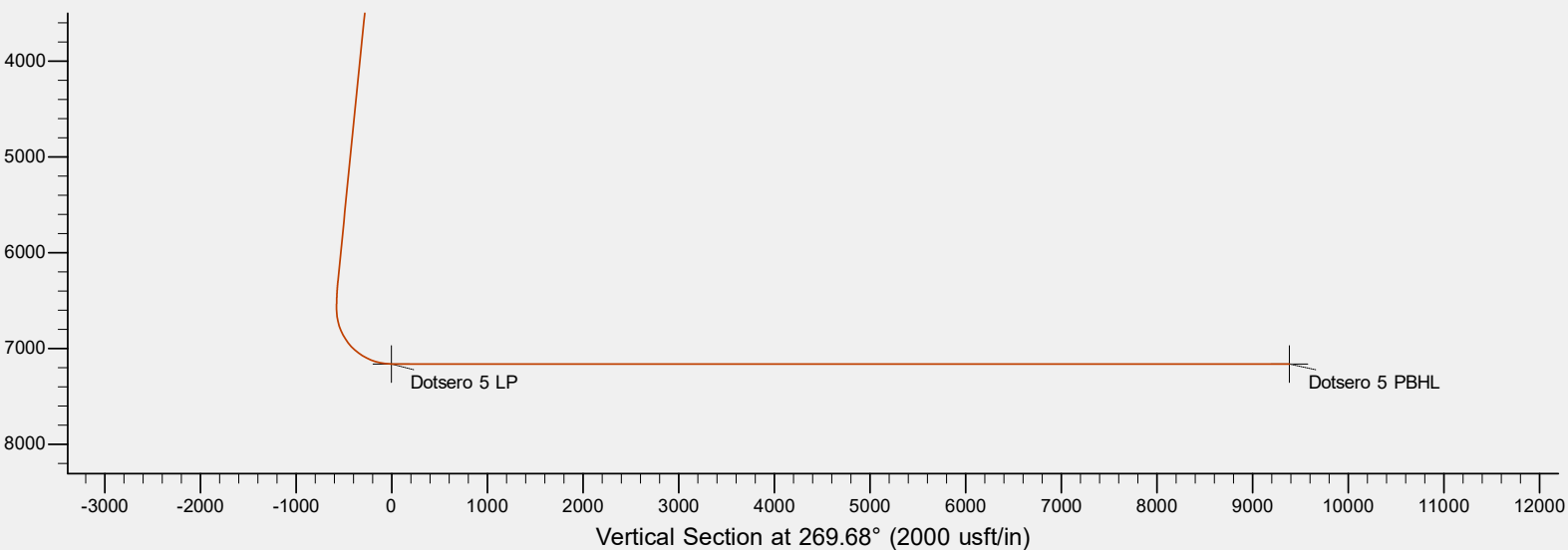
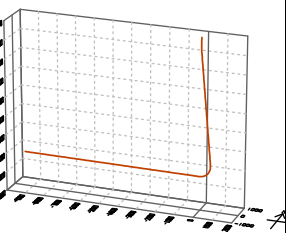
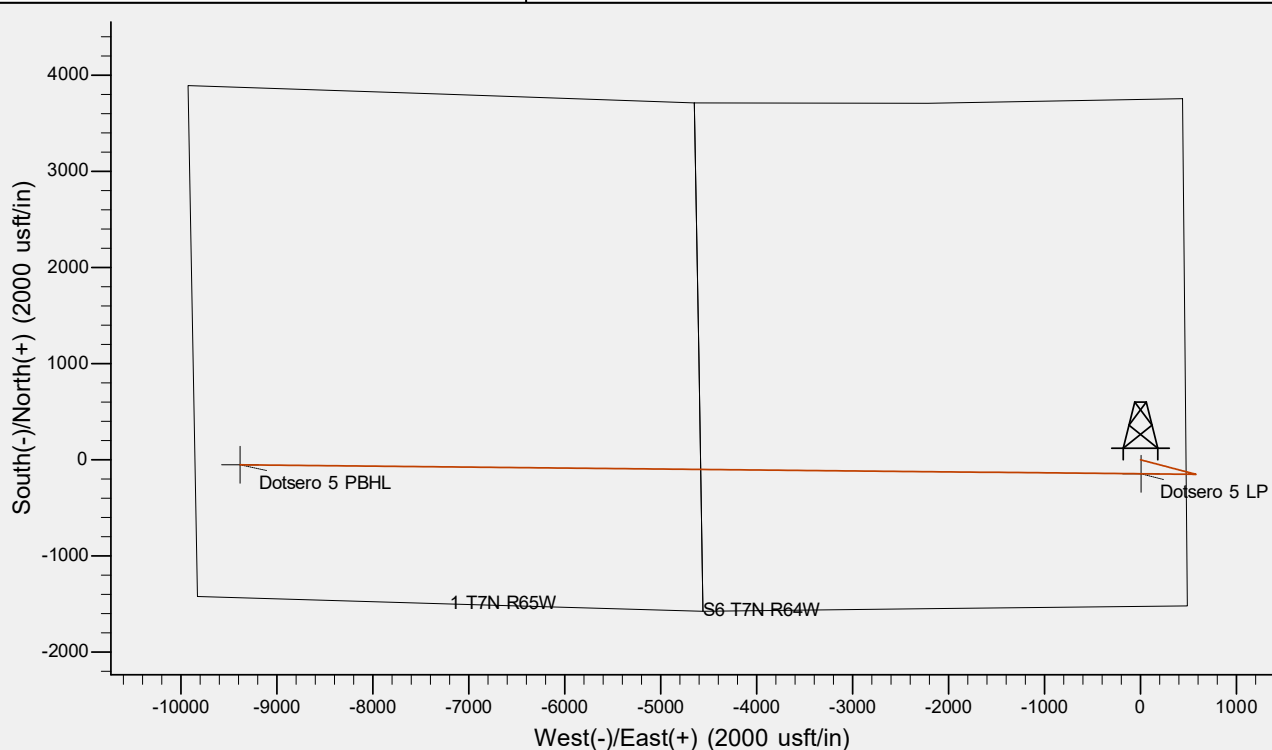
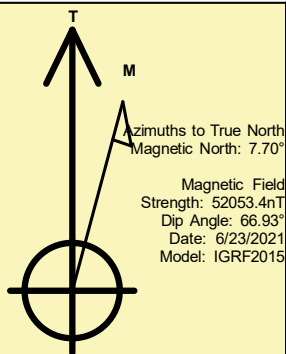
Name	TVD	+N/-S	+E/-W	Northing	Easting	Latitude	Longitude	Shape
Dotsero 5 LP	7162.0	-145.7	5.6	1462161.80	3254217.05	40° 35' 54.348 N	104° 35' 4.308 W	Point
Dotsero 5 PBHL	- plan hits target center 7162.0	-52.9	-9383.3	1462157.74	3244827.76	40° 35' 55.248 N	104° 37' 6.024 W	Point
	- plan hits target center							

REFERENCE INFORMATION

Co-ordinate (N/E) Reference: Well Dotsero 5, True North
Vertical (TVD) Reference: KB @ 5012.0usft (Original Well Elev)
Section (VS) Reference: Slot - (0.0N, 0.0E)
Measured Depth Reference: KB @ 5012.0usft (Original Well Elev)
Calculation Method: Minimum Curvature

CASING DETAILS

No casing data is available



Bayswater Exploration & Production, LLC

DJ Basin

Almont-Dotsero 6 South Pad

Dotsero 5

Wellbore #1

Plan: Design #1

Standard Planning Report

24 June, 2021

Bayswater Exploration & Production LLC

Planning Report

Database:	edm	Local Co-ordinate Reference:	Well Dotsero 5
Company:	Bayswater Exploration & Production, LLC	TVD Reference:	KB @ 5012.0usft (Original Well Elev)
Project:	DJ Basin	MD Reference:	KB @ 5012.0usft (Original Well Elev)
Site:	Almont-Dotsero 6 South Pad	North Reference:	True
Well:	Dotsero 5	Survey Calculation Method:	Minimum Curvature
Wellbore:	Wellbore #1		
Design:	Design #1		

Project	DJ Basin, DJ Basin		
Map System:	US State Plane 1983	System Datum:	Mean Sea Level
Geo Datum:	North American Datum 1983		
Map Zone:	Colorado Northern Zone		

Site		Almont-Dotsero 6 South Pad			
Site Position:		Northing:	1,462,405.83 usft	Latitude:	40° 35' 56.760 N
From:	Lat/Long	Easting:	3,254,208.98 usft	Longitude:	104° 35' 4.380 W
Position Uncertainty:	0.0 usft	Slot Radius:	13-3/16 "	Grid Convergence:	0.59 °

Well	Dotsero 5					
Well Position	+N/-S	-98.4 usft	Northing:	1,462,307.46 usft	Latitude:	40° 35' 55.788 N
	+E/-W	0.0 usft	Easting:	3,254,210.00 usft	Longitude:	104° 35' 4.380 W
Position Uncertainty		0.0 usft	Wellhead Elevation:		Ground Level:	4,989.0 usft

Wellbore	Wellbore #1				
Magnetics	Model Name	Sample Date	Declination (°)	Dip Angle (°)	Field Strength (nT)
	IGRF2015	6/23/2021	7.70	66.93	52,053.36787657

Design	Design #1			
Audit Notes:				
Version:	Phase:	PLAN	Tie On Depth:	0.0
Vertical Section:	Depth From (TVD) (usft)	+N/-S (usft)	+E/-W (usft)	Direction (°)
	0.0	0.0	0.0	269.68

Plan Survey Tool Program	Date	6/24/2021		
Depth From (usft)	Depth To (usft)	Survey (Wellbore)	Tool Name	Remarks
1	0.0	16,908.0	Design #1 (Wellbore #1)	MWD
				OWSG MWD - Standard

Plan Sections										
Measured Depth (usft)	Inclination (°)	Azimuth (°)	Vertical Depth (usft)	+N/-S (usft)	+E/-W (usft)	Dogleg Rate (°/100usft)	Build Rate (°/100usft)	Turn Rate (°/100usft)	TFO (°)	Target
0.0	0.00	0.00	0.0	0.0	0.0	0.00	0.00	0.00	0.00	
500.0	0.00	0.00	500.0	0.0	0.0	0.00	0.00	0.00	0.00	
794.6	5.89	104.67	794.1	-3.8	14.6	2.00	2.00	0.00	104.67	
6,324.7	5.89	104.67	6,295.0	-147.6	563.8	0.00	0.00	0.00	0.00	
6,619.3	0.00	270.57	6,589.0	-151.4	578.5	2.00	-2.00	0.00	180.00	
7,519.3	90.00	270.57	7,162.0	-145.7	5.6	10.00	10.00	0.00	0.00	Dotsero 5 LP
16,908.6	90.00	270.57	7,162.0	-52.9	-9,383.3	0.00	0.00	0.00	0.00	Dotsero 5 PBHL

Bayswater Exploration & Production LLC

Planning Report

Database:	edm	Local Co-ordinate Reference:	Well Dotsero 5
Company:	Bayswater Exploration & Production, LLC	TVD Reference:	KB @ 5012.0usft (Original Well Elev)
Project:	DJ Basin	MD Reference:	KB @ 5012.0usft (Original Well Elev)
Site:	Almont-Dotsero 6 South Pad	North Reference:	True
Well:	Dotsero 5	Survey Calculation Method:	Minimum Curvature
Wellbore:	Wellbore #1		
Design:	Design #1		

Planned Survey									
Measured Depth (usft)	Inclination (°)	Azimuth (°)	Vertical Depth (usft)	+N/-S (usft)	+E/-W (usft)	Vertical Section (usft)	Dogleg Rate (°/100usft)	Build Rate (°/100usft)	Turn Rate (°/100usft)
0.0	0.00	0.00	0.0	0.0	0.0	0.0	0.00	0.00	0.00
100.0	0.00	0.00	100.0	0.0	0.0	0.0	0.00	0.00	0.00
200.0	0.00	0.00	200.0	0.0	0.0	0.0	0.00	0.00	0.00
300.0	0.00	0.00	300.0	0.0	0.0	0.0	0.00	0.00	0.00
400.0	0.00	0.00	400.0	0.0	0.0	0.0	0.00	0.00	0.00
500.0	0.00	0.00	500.0	0.0	0.0	0.0	0.00	0.00	0.00
600.0	2.00	104.67	600.0	-0.4	1.7	-1.7	2.00	2.00	0.00
700.0	4.00	104.67	699.8	-1.8	6.8	-6.7	2.00	2.00	0.00
794.6	5.89	104.67	794.1	-3.8	14.6	-14.6	2.00	2.00	0.00
800.0	5.89	104.67	799.5	-4.0	15.2	-15.2	0.00	0.00	0.00
900.0	5.89	104.67	898.9	-6.6	25.1	-25.1	0.00	0.00	0.00
1,000.0	5.89	104.67	998.4	-9.2	35.0	-35.0	0.00	0.00	0.00
1,100.0	5.89	104.67	1,097.9	-11.8	45.0	-44.9	0.00	0.00	0.00
1,200.0	5.89	104.67	1,197.3	-14.4	54.9	-54.8	0.00	0.00	0.00
1,300.0	5.89	104.67	1,296.8	-17.0	64.8	-64.7	0.00	0.00	0.00
1,400.0	5.89	104.67	1,396.3	-19.6	74.8	-74.7	0.00	0.00	0.00
1,500.0	5.89	104.67	1,495.8	-22.2	84.7	-84.6	0.00	0.00	0.00
1,600.0	5.89	104.67	1,595.2	-24.8	94.6	-94.5	0.00	0.00	0.00
1,700.0	5.89	104.67	1,694.7	-27.4	104.6	-104.4	0.00	0.00	0.00
1,800.0	5.89	104.67	1,794.2	-30.0	114.5	-114.3	0.00	0.00	0.00
1,900.0	5.89	104.67	1,893.6	-32.6	124.4	-124.2	0.00	0.00	0.00
2,000.0	5.89	104.67	1,993.1	-35.2	134.4	-134.2	0.00	0.00	0.00
2,100.0	5.89	104.67	2,092.6	-37.8	144.3	-144.1	0.00	0.00	0.00
2,200.0	5.89	104.67	2,192.1	-40.4	154.2	-154.0	0.00	0.00	0.00
2,300.0	5.89	104.67	2,291.5	-43.0	164.1	-163.9	0.00	0.00	0.00
2,400.0	5.89	104.67	2,391.0	-45.6	174.1	-173.8	0.00	0.00	0.00
2,500.0	5.89	104.67	2,490.5	-48.2	184.0	-183.7	0.00	0.00	0.00
2,600.0	5.89	104.67	2,589.9	-50.8	193.9	-193.6	0.00	0.00	0.00
2,700.0	5.89	104.67	2,689.4	-53.4	203.9	-203.6	0.00	0.00	0.00
2,800.0	5.89	104.67	2,788.9	-56.0	213.8	-213.5	0.00	0.00	0.00
2,900.0	5.89	104.67	2,888.4	-58.6	223.7	-223.4	0.00	0.00	0.00
3,000.0	5.89	104.67	2,987.8	-61.1	233.7	-233.3	0.00	0.00	0.00
3,100.0	5.89	104.67	3,087.3	-63.7	243.6	-243.2	0.00	0.00	0.00
3,200.0	5.89	104.67	3,186.8	-66.3	253.5	-253.1	0.00	0.00	0.00
3,300.0	5.89	104.67	3,286.2	-68.9	263.5	-263.1	0.00	0.00	0.00
3,400.0	5.89	104.67	3,385.7	-71.5	273.4	-273.0	0.00	0.00	0.00
3,500.0	5.89	104.67	3,485.2	-74.1	283.3	-282.9	0.00	0.00	0.00
3,600.0	5.89	104.67	3,584.7	-76.7	293.2	-292.8	0.00	0.00	0.00
3,700.0	5.89	104.67	3,684.1	-79.3	303.2	-302.7	0.00	0.00	0.00
3,800.0	5.89	104.67	3,783.6	-81.9	313.1	-312.6	0.00	0.00	0.00
3,900.0	5.89	104.67	3,883.1	-84.5	323.0	-322.6	0.00	0.00	0.00
4,000.0	5.89	104.67	3,982.5	-87.1	333.0	-332.5	0.00	0.00	0.00
4,100.0	5.89	104.67	4,082.0	-89.7	342.9	-342.4	0.00	0.00	0.00
4,200.0	5.89	104.67	4,181.5	-92.3	352.8	-352.3	0.00	0.00	0.00
4,300.0	5.89	104.67	4,281.0	-94.9	362.8	-362.2	0.00	0.00	0.00
4,400.0	5.89	104.67	4,380.4	-97.5	372.7	-372.1	0.00	0.00	0.00
4,500.0	5.89	104.67	4,479.9	-100.1	382.6	-382.1	0.00	0.00	0.00
4,600.0	5.89	104.67	4,579.4	-102.7	392.6	-392.0	0.00	0.00	0.00
4,700.0	5.89	104.67	4,678.8	-105.3	402.5	-401.9	0.00	0.00	0.00
4,800.0	5.89	104.67	4,778.3	-107.9	412.4	-411.8	0.00	0.00	0.00
4,900.0	5.89	104.67	4,877.8	-110.5	422.4	-421.7	0.00	0.00	0.00
5,000.0	5.89	104.67	4,977.3	-113.1	432.3	-431.6	0.00	0.00	0.00
5,100.0	5.89	104.67	5,076.7	-115.7	442.2	-441.6	0.00	0.00	0.00
5,200.0	5.89	104.67	5,176.2	-118.3	452.1	-451.5	0.00	0.00	0.00

Bayswater Exploration & Production LLC

Planning Report

Database:	edm	Local Co-ordinate Reference:	Well Dotsero 5
Company:	Bayswater Exploration & Production, LLC	TVD Reference:	KB @ 5012.0usft (Original Well Elev)
Project:	DJ Basin	MD Reference:	KB @ 5012.0usft (Original Well Elev)
Site:	Almont-Dotsero 6 South Pad	North Reference:	True
Well:	Dotsero 5	Survey Calculation Method:	Minimum Curvature
Wellbore:	Wellbore #1		
Design:	Design #1		

Planned Survey									
Measured Depth (usft)	Inclination (°)	Azimuth (°)	Vertical Depth (usft)	+N/-S (usft)	+E/-W (usft)	Vertical Section (usft)	Dogleg Rate (°/100usft)	Build Rate (°/100usft)	Turn Rate (°/100usft)
5,300.0	5.89	104.67	5,275.7	-120.9	462.1	-461.4	0.00	0.00	0.00
5,400.0	5.89	104.67	5,375.2	-123.5	472.0	-471.3	0.00	0.00	0.00
5,500.0	5.89	104.67	5,474.6	-126.1	481.9	-481.2	0.00	0.00	0.00
5,600.0	5.89	104.67	5,574.1	-128.7	491.9	-491.1	0.00	0.00	0.00
5,700.0	5.89	104.67	5,673.6	-131.3	501.8	-501.1	0.00	0.00	0.00
5,800.0	5.89	104.67	5,773.0	-133.9	511.7	-511.0	0.00	0.00	0.00
5,900.0	5.89	104.67	5,872.5	-136.5	521.7	-520.9	0.00	0.00	0.00
6,000.0	5.89	104.67	5,972.0	-139.1	531.6	-530.8	0.00	0.00	0.00
6,100.0	5.89	104.67	6,071.5	-141.7	541.5	-540.7	0.00	0.00	0.00
6,200.0	5.89	104.67	6,170.9	-144.3	551.5	-550.6	0.00	0.00	0.00
6,300.0	5.89	104.67	6,270.4	-146.9	561.4	-560.6	0.00	0.00	0.00
6,324.7	5.89	104.67	6,295.0	-147.6	563.8	-563.0	0.00	0.00	0.00
6,400.0	4.39	104.67	6,370.0	-149.3	570.4	-569.5	2.00	-2.00	0.00
6,500.0	2.39	104.67	6,469.8	-150.8	576.1	-575.2	2.00	-2.00	0.00
6,600.0	0.39	104.67	6,569.7	-151.4	578.4	-577.6	2.00	-2.00	0.00
6,619.3	0.00	270.57	6,589.0	-151.4	578.5	-577.6	2.00	-2.00	0.00
6,700.0	8.07	270.57	6,669.5	-151.3	572.8	-571.9	10.00	10.00	0.00
6,800.0	18.07	270.57	6,766.8	-151.1	550.2	-549.4	10.00	10.00	0.00
6,900.0	28.07	270.57	6,858.7	-150.7	511.1	-510.2	10.00	10.00	0.00
7,000.0	38.07	270.57	6,942.3	-150.2	456.6	-455.7	10.00	10.00	0.00
7,100.0	48.07	270.57	7,015.3	-149.5	388.4	-387.5	10.00	10.00	0.00
7,200.0	58.07	270.57	7,075.3	-148.7	308.6	-307.7	10.00	10.00	0.00
7,300.0	68.07	270.57	7,120.5	-147.8	219.5	-218.7	10.00	10.00	0.00
7,400.0	78.07	270.57	7,149.6	-146.9	124.0	-123.2	10.00	10.00	0.00
7,500.0	88.07	270.57	7,161.7	-145.9	24.8	-24.0	10.00	10.00	0.00
7,519.3	90.00	270.57	7,162.0	-145.7	5.6	-4.7	10.00	10.00	0.00
7,600.0	90.00	270.57	7,162.0	-144.9	-75.1	76.0	0.00	0.00	0.00
7,700.0	90.00	270.57	7,162.0	-143.9	-175.1	175.9	0.00	0.00	0.00
7,800.0	90.00	270.57	7,162.0	-142.9	-275.1	275.9	0.00	0.00	0.00
7,900.0	90.00	270.57	7,162.0	-142.0	-375.1	375.9	0.00	0.00	0.00
8,000.0	90.00	270.57	7,162.0	-141.0	-475.1	475.9	0.00	0.00	0.00
8,100.0	90.00	270.57	7,162.0	-140.0	-575.1	575.9	0.00	0.00	0.00
8,200.0	90.00	270.57	7,162.0	-139.0	-675.1	675.9	0.00	0.00	0.00
8,300.0	90.00	270.57	7,162.0	-138.0	-775.1	775.9	0.00	0.00	0.00
8,400.0	90.00	270.57	7,162.0	-137.0	-875.1	875.9	0.00	0.00	0.00
8,500.0	90.00	270.57	7,162.0	-136.0	-975.1	975.9	0.00	0.00	0.00
8,600.0	90.00	270.57	7,162.0	-135.0	-1,075.1	1,075.8	0.00	0.00	0.00
8,700.0	90.00	270.57	7,162.0	-134.0	-1,175.1	1,175.8	0.00	0.00	0.00
8,800.0	90.00	270.57	7,162.0	-133.1	-1,275.1	1,275.8	0.00	0.00	0.00
8,900.0	90.00	270.57	7,162.0	-132.1	-1,375.1	1,375.8	0.00	0.00	0.00
9,000.0	90.00	270.57	7,162.0	-131.1	-1,475.1	1,475.8	0.00	0.00	0.00
9,100.0	90.00	270.57	7,162.0	-130.1	-1,575.1	1,575.8	0.00	0.00	0.00
9,200.0	90.00	270.57	7,162.0	-129.1	-1,675.1	1,675.8	0.00	0.00	0.00
9,300.0	90.00	270.57	7,162.0	-128.1	-1,775.1	1,775.8	0.00	0.00	0.00
9,400.0	90.00	270.57	7,162.0	-127.1	-1,875.1	1,875.7	0.00	0.00	0.00
9,500.0	90.00	270.57	7,162.0	-126.1	-1,975.1	1,975.7	0.00	0.00	0.00
9,600.0	90.00	270.57	7,162.0	-125.1	-2,075.0	2,075.7	0.00	0.00	0.00
9,700.0	90.00	270.57	7,162.0	-124.2	-2,175.0	2,175.7	0.00	0.00	0.00
9,800.0	90.00	270.57	7,162.0	-123.2	-2,275.0	2,275.7	0.00	0.00	0.00
9,900.0	90.00	270.57	7,162.0	-122.2	-2,375.0	2,375.7	0.00	0.00	0.00
10,000.0	90.00	270.57	7,162.0	-121.2	-2,475.0	2,475.7	0.00	0.00	0.00
10,100.0	90.00	270.57	7,162.0	-120.2	-2,575.0	2,575.7	0.00	0.00	0.00
10,200.0	90.00	270.57	7,162.0	-119.2	-2,675.0	2,675.6	0.00	0.00	0.00
10,300.0	90.00	270.57	7,162.0	-118.2	-2,775.0	2,775.6	0.00	0.00	0.00

Bayswater Exploration & Production LLC

Planning Report

Database:	edm	Local Co-ordinate Reference:	Well Dotsero 5
Company:	Bayswater Exploration & Production, LLC	TVD Reference:	KB @ 5012.0usft (Original Well Elev)
Project:	DJ Basin	MD Reference:	KB @ 5012.0usft (Original Well Elev)
Site:	Almont-Dotsero 6 South Pad	North Reference:	True
Well:	Dotsero 5	Survey Calculation Method:	Minimum Curvature
Wellbore:	Wellbore #1		
Design:	Design #1		

Planned Survey										
Measured Depth (usft)	Inclination (°)	Azimuth (°)	Vertical Depth (usft)	+N/-S (usft)	+E/-W (usft)	Vertical Section (usft)	Dogleg Rate (°/100usft)	Build Rate (°/100usft)	Turn Rate (°/100usft)	
10,400.0	90.00	270.57	7,162.0	-117.2	-2,875.0	2,875.6	0.00	0.00	0.00	
10,500.0	90.00	270.57	7,162.0	-116.2	-2,975.0	2,975.6	0.00	0.00	0.00	
10,600.0	90.00	270.57	7,162.0	-115.3	-3,075.0	3,075.6	0.00	0.00	0.00	
10,700.0	90.00	270.57	7,162.0	-114.3	-3,175.0	3,175.6	0.00	0.00	0.00	
10,800.0	90.00	270.57	7,162.0	-113.3	-3,275.0	3,275.6	0.00	0.00	0.00	
10,900.0	90.00	270.57	7,162.0	-112.3	-3,375.0	3,375.6	0.00	0.00	0.00	
11,000.0	90.00	270.57	7,162.0	-111.3	-3,475.0	3,475.6	0.00	0.00	0.00	
11,100.0	90.00	270.57	7,162.0	-110.3	-3,575.0	3,575.5	0.00	0.00	0.00	
11,200.0	90.00	270.57	7,162.0	-109.3	-3,675.0	3,675.5	0.00	0.00	0.00	
11,300.0	90.00	270.57	7,162.0	-108.3	-3,775.0	3,775.5	0.00	0.00	0.00	
11,400.0	90.00	270.57	7,162.0	-107.3	-3,875.0	3,875.5	0.00	0.00	0.00	
11,500.0	90.00	270.57	7,162.0	-106.4	-3,975.0	3,975.5	0.00	0.00	0.00	
11,600.0	90.00	270.57	7,162.0	-105.4	-4,075.0	4,075.5	0.00	0.00	0.00	
11,700.0	90.00	270.57	7,162.0	-104.4	-4,174.9	4,175.5	0.00	0.00	0.00	
11,800.0	90.00	270.57	7,162.0	-103.4	-4,274.9	4,275.5	0.00	0.00	0.00	
11,900.0	90.00	270.57	7,162.0	-102.4	-4,374.9	4,375.4	0.00	0.00	0.00	
12,000.0	90.00	270.57	7,162.0	-101.4	-4,474.9	4,475.4	0.00	0.00	0.00	
12,100.0	90.00	270.57	7,162.0	-100.4	-4,574.9	4,575.4	0.00	0.00	0.00	
12,200.0	90.00	270.57	7,162.0	-99.4	-4,674.9	4,675.4	0.00	0.00	0.00	
12,300.0	90.00	270.57	7,162.0	-98.4	-4,774.9	4,775.4	0.00	0.00	0.00	
12,400.0	90.00	270.57	7,162.0	-97.4	-4,874.9	4,875.4	0.00	0.00	0.00	
12,500.0	90.00	270.57	7,162.0	-96.5	-4,974.9	4,975.4	0.00	0.00	0.00	
12,600.0	90.00	270.57	7,162.0	-95.5	-5,074.9	5,075.4	0.00	0.00	0.00	
12,700.0	90.00	270.57	7,162.0	-94.5	-5,174.9	5,175.3	0.00	0.00	0.00	
12,800.0	90.00	270.57	7,162.0	-93.5	-5,274.9	5,275.3	0.00	0.00	0.00	
12,900.0	90.00	270.57	7,162.0	-92.5	-5,374.9	5,375.3	0.00	0.00	0.00	
13,000.0	90.00	270.57	7,162.0	-91.5	-5,474.9	5,475.3	0.00	0.00	0.00	
13,100.0	90.00	270.57	7,162.0	-90.5	-5,574.9	5,575.3	0.00	0.00	0.00	
13,200.0	90.00	270.57	7,162.0	-89.5	-5,674.9	5,675.3	0.00	0.00	0.00	
13,300.0	90.00	270.57	7,162.0	-88.5	-5,774.9	5,775.3	0.00	0.00	0.00	
13,400.0	90.00	270.57	7,162.0	-87.6	-5,874.9	5,875.3	0.00	0.00	0.00	
13,500.0	90.00	270.57	7,162.0	-86.6	-5,974.9	5,975.3	0.00	0.00	0.00	
13,600.0	90.00	270.57	7,162.0	-85.6	-6,074.9	6,075.2	0.00	0.00	0.00	
13,700.0	90.00	270.57	7,162.0	-84.6	-6,174.8	6,175.2	0.00	0.00	0.00	
13,800.0	90.00	270.57	7,162.0	-83.6	-6,274.8	6,275.2	0.00	0.00	0.00	
13,900.0	90.00	270.57	7,162.0	-82.6	-6,374.8	6,375.2	0.00	0.00	0.00	
14,000.0	90.00	270.57	7,162.0	-81.6	-6,474.8	6,475.2	0.00	0.00	0.00	
14,100.0	90.00	270.57	7,162.0	-80.6	-6,574.8	6,575.2	0.00	0.00	0.00	
14,200.0	90.00	270.57	7,162.0	-79.6	-6,674.8	6,675.2	0.00	0.00	0.00	
14,300.0	90.00	270.57	7,162.0	-78.7	-6,774.8	6,775.2	0.00	0.00	0.00	
14,400.0	90.00	270.57	7,162.0	-77.7	-6,874.8	6,875.1	0.00	0.00	0.00	
14,500.0	90.00	270.57	7,162.0	-76.7	-6,974.8	6,975.1	0.00	0.00	0.00	
14,600.0	90.00	270.57	7,162.0	-75.7	-7,074.8	7,075.1	0.00	0.00	0.00	
14,700.0	90.00	270.57	7,162.0	-74.7	-7,174.8	7,175.1	0.00	0.00	0.00	
14,800.0	90.00	270.57	7,162.0	-73.7	-7,274.8	7,275.1	0.00	0.00	0.00	
14,900.0	90.00	270.57	7,162.0	-72.7	-7,374.8	7,375.1	0.00	0.00	0.00	
15,000.0	90.00	270.57	7,162.0	-71.7	-7,474.8	7,475.1	0.00	0.00	0.00	
15,100.0	90.00	270.57	7,162.0	-70.7	-7,574.8	7,575.1	0.00	0.00	0.00	
15,200.0	90.00	270.57	7,162.0	-69.8	-7,674.8	7,675.0	0.00	0.00	0.00	
15,300.0	90.00	270.57	7,162.0	-68.8	-7,774.8	7,775.0	0.00	0.00	0.00	
15,400.0	90.00	270.57	7,162.0	-67.8	-7,874.8	7,875.0	0.00	0.00	0.00	
15,500.0	90.00	270.57	7,162.0	-66.8	-7,974.8	7,975.0	0.00	0.00	0.00	
15,600.0	90.00	270.57	7,162.0	-65.8	-8,074.8	8,075.0	0.00	0.00	0.00	
15,700.0	90.00	270.57	7,162.0	-64.8	-8,174.7	8,175.0	0.00	0.00	0.00	

Bayswater Exploration & Production LLC

Planning Report

Database:	edm	Local Co-ordinate Reference:	Well Dotsero 5
Company:	Bayswater Exploration & Production, LLC	TVD Reference:	KB @ 5012.0usft (Original Well Elev)
Project:	DJ Basin	MD Reference:	KB @ 5012.0usft (Original Well Elev)
Site:	Almont-Dotsero 6 South Pad	North Reference:	True
Well:	Dotsero 5	Survey Calculation Method:	Minimum Curvature
Wellbore:	Wellbore #1		
Design:	Design #1		

Planned Survey										
Measured Depth (usft)	Inclination (°)	Azimuth (°)	Vertical Depth (usft)	+N/-S (usft)	+E/-W (usft)	Vertical Section (usft)	Dogleg Rate (°/100usft)	Build Rate (°/100usft)	Turn Rate (°/100usft)	
15,800.0	90.00	270.57	7,162.0	-63.8	-8,274.7	8,275.0	0.00	0.00	0.00	
15,900.0	90.00	270.57	7,162.0	-62.8	-8,374.7	8,375.0	0.00	0.00	0.00	
16,000.0	90.00	270.57	7,162.0	-61.8	-8,474.7	8,474.9	0.00	0.00	0.00	
16,100.0	90.00	270.57	7,162.0	-60.9	-8,574.7	8,574.9	0.00	0.00	0.00	
16,200.0	90.00	270.57	7,162.0	-59.9	-8,674.7	8,674.9	0.00	0.00	0.00	
16,300.0	90.00	270.57	7,162.0	-58.9	-8,774.7	8,774.9	0.00	0.00	0.00	
16,400.0	90.00	270.57	7,162.0	-57.9	-8,874.7	8,874.9	0.00	0.00	0.00	
16,500.0	90.00	270.57	7,162.0	-56.9	-8,974.7	8,974.9	0.00	0.00	0.00	
16,600.0	90.00	270.57	7,162.0	-55.9	-9,074.7	9,074.9	0.00	0.00	0.00	
16,700.0	90.00	270.57	7,162.0	-54.9	-9,174.7	9,174.9	0.00	0.00	0.00	
16,800.0	90.00	270.57	7,162.0	-53.9	-9,274.7	9,274.9	0.00	0.00	0.00	
16,900.0	90.00	270.57	7,162.0	-52.9	-9,374.7	9,374.8	0.00	0.00	0.00	
16,908.6	90.00	270.57	7,162.0	-52.9	-9,383.3	9,383.4	0.00	0.00	0.00	
20" Casing										

Design Targets										
Target Name	Dip Angle (°)	Dip Dir. (°)	TVD (usft)	+N/-S (usft)	+E/-W (usft)	Northing (usft)	Easting (usft)	Latitude	Longitude	
- hit/miss target										
- Shape										
Dotsero 5 LP	0.00	0.00	7,162.0	-145.7	5.6	1,462,161.81	3,254,217.06	40° 35' 54.348 N	104° 35' 4.308 W	
- plan hits target center										
- Point										
Dotsero 5 PBHL	0.00	0.00	7,162.0	-52.9	-9,383.3	1,462,157.74	3,244,827.76	40° 35' 55.248 N	104° 37' 6.024 W	
- plan hits target center										
- Point										

Casing Points										
Measured Depth (usft)	Vertical Depth (usft)	Name	Casing Diameter (")	Hole Diameter (")						
16,908.6	7,162.0	20" Casing	20	24						