

Inspection Photos

Location Name: CROW CREEK STATE AD /31-79HN

Location #: 433025



Photo #1

CROW CREEK STATE AD /31-79HN Pad

10: Wellsites

10: Producing | PR



Photo #2

Crow Creek State AD 31-79HN (05-123-37426)

Wellsite

Producing | PR

Inspection Photos

Location Name: CROW CREEK STATE AD /31-79HN

Location #: 433025



Photo #3

Crow Creek State AC 36-72-1HN (05-123-37424)

Wellsite

Producing | PR



Photo #4

Crow Creek State AC 36-72HN (05-123-37418)

Wellsite

Producing | PR

Inspection Photos

Location Name: CROW CREEK STATE AD /31-79HN

Location #: 433025



Photo #5

Crow Creek State AC 36-73-1HN (05-123-37422)

Wellsite

Producing | PR

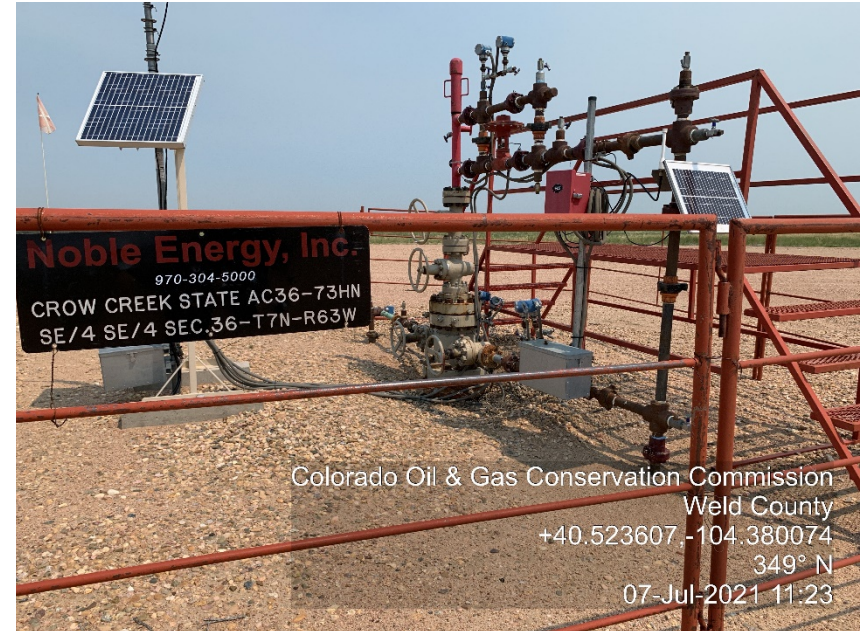


Photo #6

Crow Creek State AC 36-73HN (05-123-37423)

Wellsite

Producing | PR

Inspection Photos

Location Name: CROW CREEK STATE AD /31-79HN

Location #: 433025



Photo #7

Crow Creek State AC 36-74-1HN (05-123-37417)

Wellsite

Producing | PR



Photo #8

Crow Creek State AC 36-74HN (05-123-37425)

Wellsite

Producing | PR

Inspection Photos

Location Name: CROW CREEK STATE AD /31-79HN

Location #: 433025



Photo #9

Crow Creek State AC 36-75-1HN (05-123-37421)

Wellsite

Producing | PR



Photo #10

Crow Creek State AC 36-75HN (05-123-37419)

Wellsite

Producing | PR

Inspection Photos

Location Name: CROW CREEK STATE AD /31-79HN

Location #: 433025



Colorado Oil & Gas Conservation Commission
Weld County
+40.523573, -104.380758
5° N
07-Jul-2021 11:25

Photo #11

Crow Creek State AC 36-76-1HN (05-123-37420)

Wellsite

Producing | PR



Colorado Oil & Gas Conservation Commission
Weld County
+40.523675, -104.381634
274° W
07-Jul-2021 11:37

Photo #12

CROW CREEK STATE AD /31-79HN Pad

10: Wellsites

Gas Lift Manifolds

Active

Inspection Photos

Location Name: CROW CREEK STATE AD /31-79HN

Location #: 433025



Colorado Oil & Gas Conservation Commission
Weld County
+40.523339, -104.384191
39° NE
07-Jul-2021 10:53

Photo #13

**Crow Creek State AC 36-72-1HN, 36-72HN,
36-73-1HN, 36-73HN, 36-74-1HN, 36-74HN, 36-75-1HN,
36-75HN, 36-76-1HN, 36-76HN, 36-77-1HN, 36-77HN,
36-78-1HN, 36-78HN, 36-79-1HN, AD 31-79HN,
Crow Creek AE 6-790, AA 1-724, 1-734, 1-743, 1-751,
1-756, 1-766, 1-785, 1-789**

Battery site

Active



Colorado Oil & Gas Conservation Commission
+40.524072, -104.383148
311° NW
07-Jul-2021 10:47

Photo #14

**Crow Creek State AC 36-72-1HN, 36-72HN,
36-73-1HN, 36-73HN, 36-74-1HN, 36-74HN, 36-75-1HN,
36-75HN, 36-76-1HN, 36-76HN, 36-77-1HN, 36-77HN,
36-78-1HN, 36-78HN, 36-79-1HN, AD 31-79HN,
Crow Creek AE 6-790, AA 1-724, 1-734, 1-743, 1-751,
1-756, 1-766, 1-785, 1-789**

Battery site

Active: Maintenance Tank

Inspection Photos

Location Name: CROW CREEK STATE AD /31-79HN

Location #: 433025



Colorado Oil & Gas Conservation Commission
Weld County
+40.522957, -104.384128
1° N
07-Jul-2021 10:55

Photo #15

Crow Creek State AC 36-72-1HN, 36-72HN,
36-73-1HN, 36-73HN, 36-74-1HN, 36-74HN, 36-75-1HN,
36-75HN, 36-76-1HN, 36-76HN, 36-77-1HN, 36-77HN,
36-78-1HN, 36-78HN, 36-79-1HN, AD 31-79HN,
Crow Creek AE 6-790, AA 1-724, 1-734, 1-743, 1-751,
1-756, 1-766, 1-785, 1-789

Battery site

Active: Battery signs



COLORADO
Oil & Gas Conservation
Commission
Department of Natural Resources