

Inspection Photos

Location Name: LARAMIE ENERGY LLC CC /0620-33 Pad

Location ID: 335204



Photo #4363 from entrance to location.



Photo #4364 No battery sign located at the tank battery.



COLORADO
Oil & Gas Conservation
Commission
Department of Natural Resources

Inspection Photos

Location Name: LARAMIE ENERGY LLC CC /0620-33 Pad

Location ID: 335204



Photo #4365 Heating insulation opened ended and not capped.



Photo #4366 Location lacks stabilization.

Inspection Photos

Location Name: LARAMIE ENERGY LLC CC /0620-33 Pad

Location ID: 335204



Photo #4367 Location lacks stabilization.

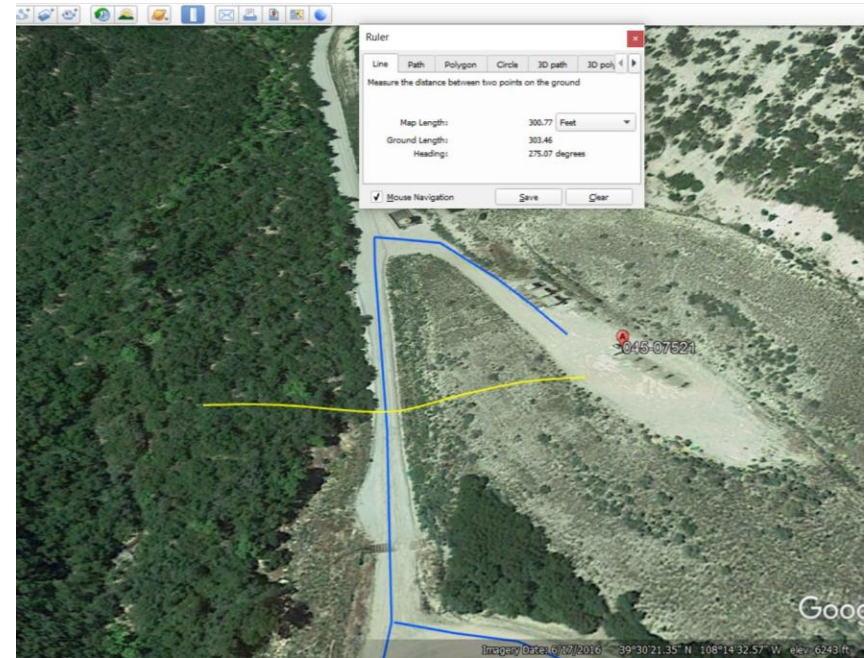


Photo #4368 No form of tracking BMP located at entrance to location.

Inspection Photos
Location Name: LARAMIE ENERGY LLC CC /0620-33 Pad
Location ID: 335204



Photo #4369 Conn Creek from location.



**Location is located approximately 300 ft. from Conn Creek.
All drainages contribute to Conn Creek.**

