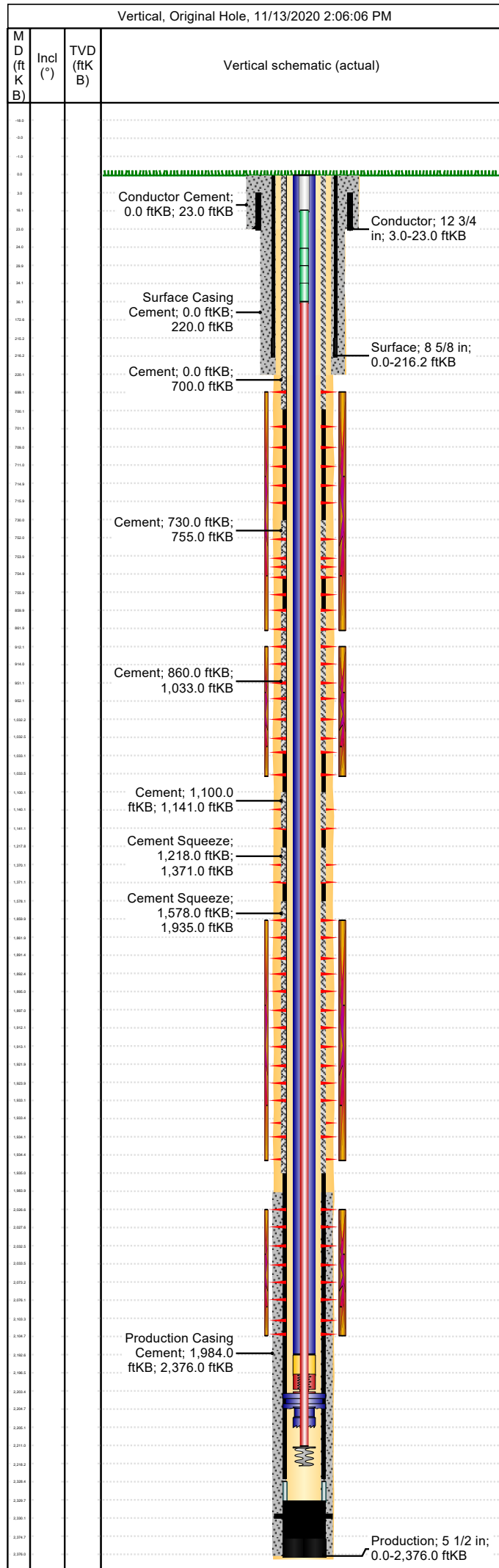


Well Name: Apache Canyon 13-12X

Conductor

API/UWI 05071088280000	Location T34S-R68W-S13	Field Name Purgatoire River	Permit Number 20061869	State/Province Colorado	Well Configuration Type Vertical
Gr Elev (ft) 8,394.00	Casing Flange Elevation (ft)	KB-Ground Distance (ft) 0.00	KB-Casing Flange Distance (ft)	Spud Date 8/17/2006 10:15	Rig Release Date 8/20/2006 17:00



<b>Wellbore</b>									
Wellbore Name			Profile Type			Vertical Section Direction (°)			
Section Des		Size (in)		Act Top (ftKB)		Act Btm (ftKB)			
<b>Kick Offs &amp; Key Depths</b>									
Type		Top Depth (ftKB)			Depth Top (TVD) (ftKB)				
<b>Wellhead</b>									
Type									
Des		Make		Model		SN		WP Top (psi)	
<b>Last Mud Check</b>									
Date	Type	Depth (ftKB)	Dens (lb/gal)	Vis (s/qt)	Gel 10s (lb/100ft²)	Gel 10m (lb/100ft²)	PV (cP)	YP (lb/100ft²)	
<b>Casing</b>									
Casing Description Conductor			Run Date 8/17/2006 11:15		Set Depth (ftKB) 23.0		Wellbore Original Hole		
Centralizers				Scratchers					
Jts	Item Des	OD (in)	ID (in)	Wt (lb/ft)	Grade	Len (ft)	Top (ftKB)	Btm (ftKB)	
1	Casing Joints	12 3/4	12.00	35.00	L/S	20.00	3.0	23.0	
Casing Description Surface			Run Date 8/18/2006 09:15		Set Depth (ftKB) 216.2		Wellbore Original Hole		
Centralizers				Scratchers					
Jts	Item Des	OD (in)	ID (in)	Wt (lb/ft)	Grade	Len (ft)	Top (ftKB)	Btm (ftKB)	
4	Casing Joints	8 5/8	8.10	24.00	J-55	172.45	0.0	172.4	
1	Insert Float Valve	8 5/8	8.10	24.00	J-55	0.00	172.4	172.4	
1	Casing Joints	8 5/8	8.10	24.00	J-55	42.75	172.4	215.2	
1	Guide Shoe	8 5/8	8.10	24.00	J-55	1.00	215.2	216.2	
Casing Description Production			Run Date 8/20/2006 00:00		Set Depth (ftKB) 2,376.0		Wellbore Original Hole		
Centralizers				Scratchers					
Jts	Item Des	OD (in)	ID (in)	Wt (lb/ft)	Grade	Len (ft)	Top (ftKB)	Btm (ftKB)	
52	Casing Joints	5 1/2	4.95	15.50	J-55	2,328.36	0.0	2,328.4	
1	Float Collar	5 1/2	4.95	15.50	J-55	1.25	2,328.4	2,329.6	
1	Casing Joints	5 1/2	0.00	15.50	J-55	45.13	2,329.6	2,374.8	
1	Float Shoe	5 1/2	0.00	15.50	J-55	1.25	2,374.8	2,376.0	
<b>Cement: &lt;Description?&gt;</b>									
Cementing Start Date			Cementing End Date			Wellbore			
Evaluation Method			Cement Evaluation Results						
Comment									
<b>Cement Stage: &lt;Description?&gt;</b>									
Top Depth (ftKB)		Bottom Depth (ftKB)		Full Return?		Vol Cement		Top Plug?	
Initial Pump Rate (bbl/min)		Final Pump Rate (bbl/min)		Avg Pump Rate (bbl/min)		Final Pump Pressure (psi)		Plug Bump Pressure (psi)	
Pipe Reciprocated?		Stroke (ft)		Reciprocation Rate (spm)		Pipe Rotated?		Pipe RPM (rpm)	
Tagged Depth (ftKB)		Tag Method		Depth Plug Drilled Out To		Drill Out Diameter (in)		Drill Out Date	
<b>Cement Fluid: &lt;Description?&gt;</b>									
Fluid Type		Fluid Description				Amount (sack)		Class	
Estimated Top (ftKB)		Est Btm (ftKB)		Yield (ft³/sack)		Mix H2O Ratio (gal/sack)		Free Water (%)	
Density (lb/gal)		Plastic Viscosity (cP)			Thickening Time (hr)		1st Compressive Strength (psi)		
<b>Cement Fluid Additives</b>									
Add		Type				Conc			