

Inspection Photos

Location Name: TEP ROCKY MOUNTAIN LLC UNOCAL-66S96W /33NWSE

Location ID: 335214



Photo #4245 from entrance to location.



Photo #4246 from entrance to location.



COLORADO
Oil & Gas Conservation
Commission
Department of Natural Resources

Inspection Photos

Location Name: TEP ROCKY MOUNTAIN LLC UNOCAL-66S96W /33NWSE

Location ID: 335214



Photo #4248 Location lacks stabilization.



Photo #4249 No form of tracking BMP at entrance to location.

Inspection Photos

Location Name: TEP ROCKY MOUNTAIN LLC UNOCAL-66S96W /33NWSE

Location ID: 335214



Photo #4250 Rill erosion occurring in center of access road.



Photo #4252 Rill erosion occurring in access road ditches.

Inspection Photos

Location Name: TEP ROCKY MOUNTAIN LLC UNOCAL-66S96W /33NWSE

Location ID: 335214



Network: Jun 30, 2021 at 1:49:28 PM MD
Local: Jun 30, 2021 at 1:49:28 PM MD



Network: Jun 30, 2021 at 1:50:23 PM MD
Local: Jun 30, 2021 at 1:50:23 PM MD

Photo #4253 No velocity checks located in access road ditches.

Photo #4254 Gully erosion occurring at entrance to access road.



COLORADO
Oil & Gas Conservation
Commission
Department of Natural Resources

Inspection Photos

Location Name: TEP ROCKY MOUNTAIN LLC UNOCAL-66S96W /33NWSE

Location ID: 335214



Photo #4255 Gully erosion.



Photo #4256 Inlet of culvert that contributes to Parachute creek.



Inspection Photos

Location Name: TEP ROCKY MOUNTAIN LLC UNOCAL-66S96W /33NWSE

Location ID: 335214



Photo #4260 Outlet of culvert that contributes to Parachute creek.

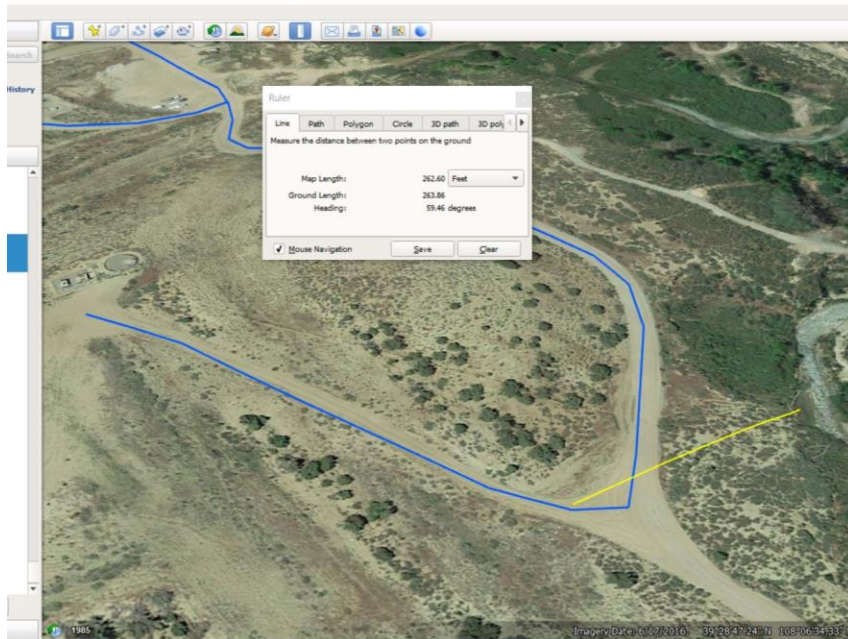


Photo #4259 Parachute creek from entrance to access road.

Inspection Photos

Location Name: TEP ROCKY MOUNTAIN LLC UNOCAL-66S96W /33NWSE

Location ID: 335214



Approximate distance from location and access road to Parachute creek.