



Pad Center Looking North



Pad Center Looking South



Project Overview



Pad Center Looking East



Pad Center Looking West



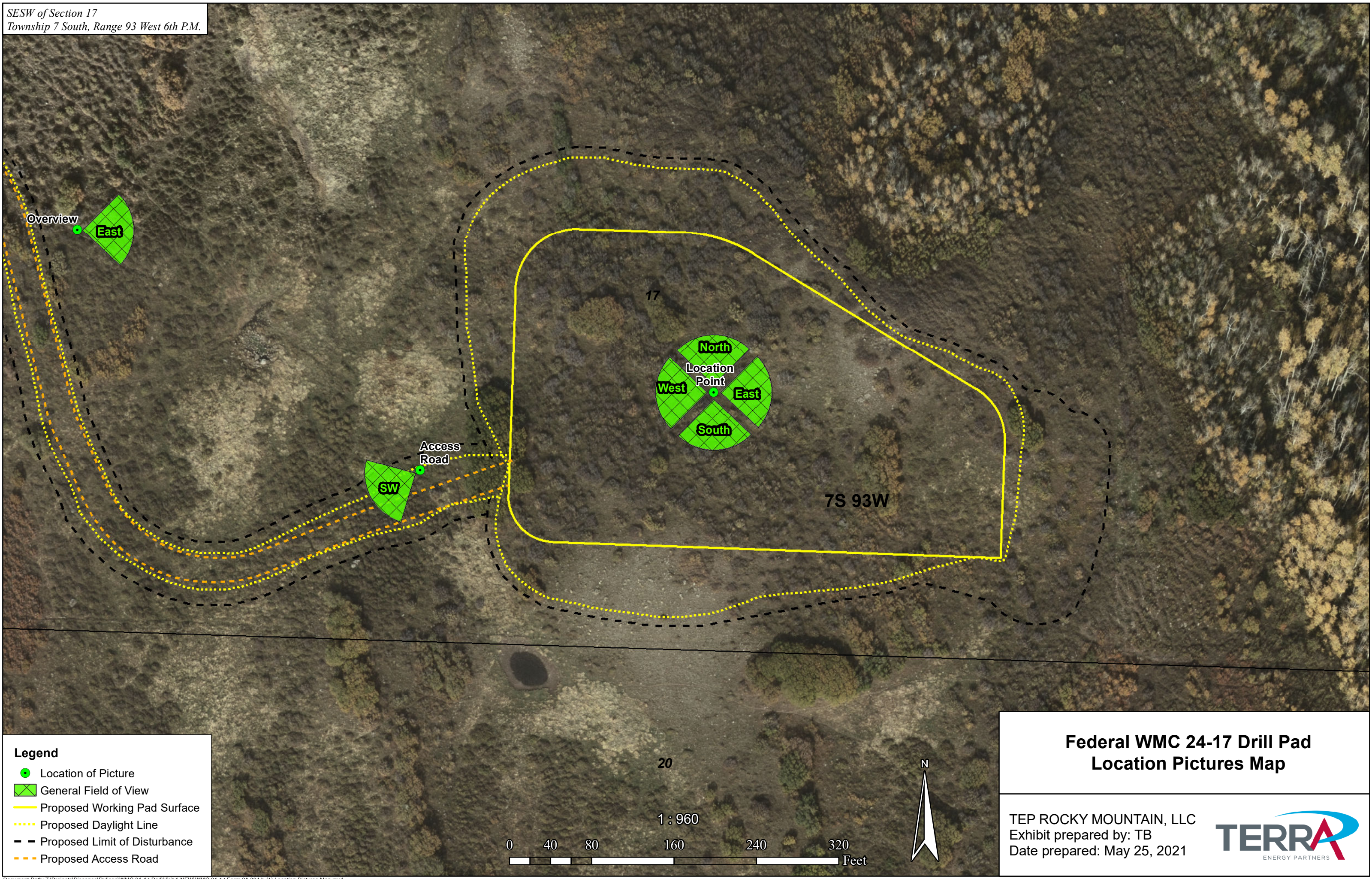
Project Access Road

- Notes:
- 1) Reference the attached Location Pictures Overview Map for the locations where each picture was taken for this Oil and Gas Location
 - 2) Project Overview: Lat: 39.439433; Long: -107.801602
 - 3) Location Pictures: Lat: 39.439049; Long: -107.79941
 - 4) Project Access Road: Lat: 39.438815; Long: -107.800402

**Federal WMC 24-17 Drill Pad
Location Pictures**

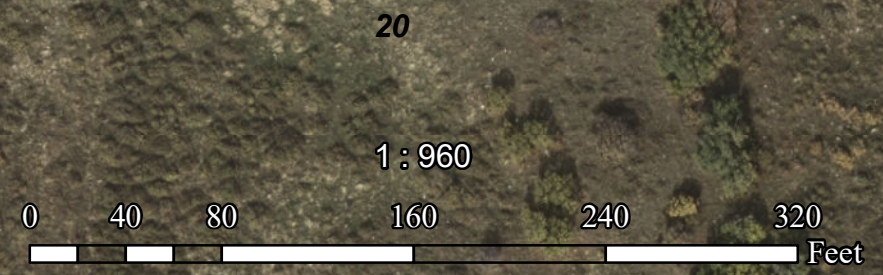
TEP ROCKY MOUNTAIN, LLC
Exhibit prepared by: TB
Date prepared: May 3, 2021





Legend

- Location of Picture
- ⊠ General Field of View
- Proposed Working Pad Surface
- ⋯ Proposed Daylight Line
- - Proposed Limit of Disturbance
- - Proposed Access Road



**Federal WMC 24-17 Drill Pad
Location Pictures Map**

TEP ROCKY MOUNTAIN, LLC
Exhibit prepared by: TB
Date prepared: May 25, 2021