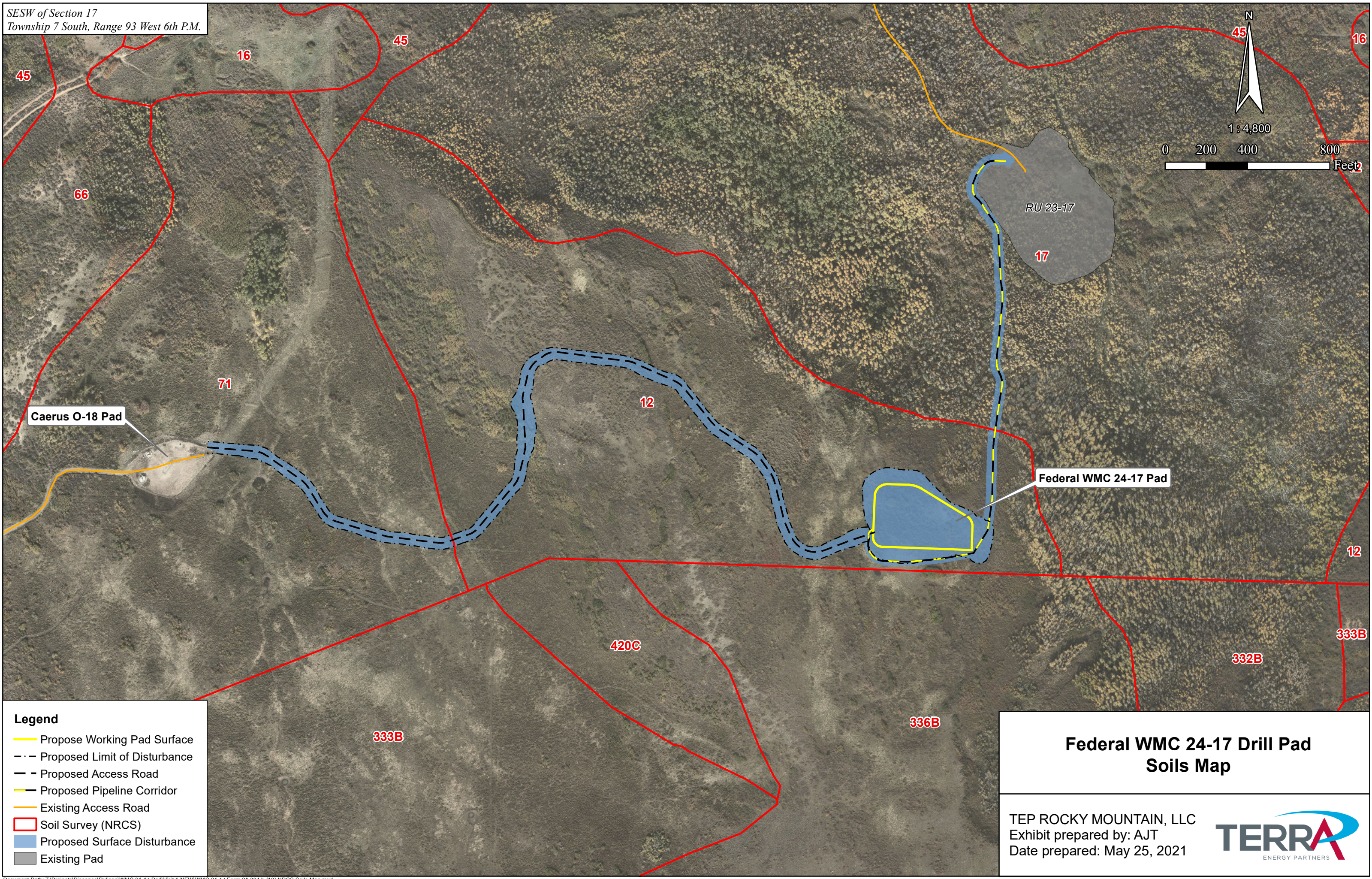
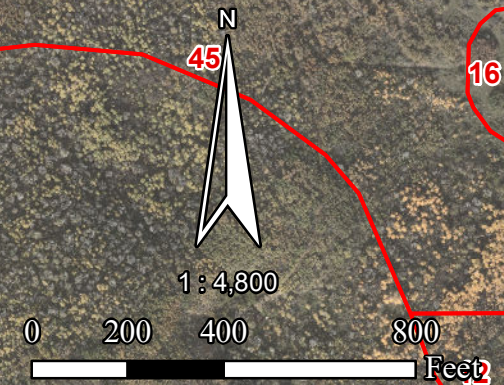


SESW of Section 17
Township 7 South, Range 93 West 6th P.M.



Legend

- Propose Working Pad Surface
- Proposed Limit of Disturbance
- Proposed Access Road
- Proposed Pipeline Corridor
- Existing Access Road
- Soil Survey (NRCS)
- Proposed Surface Disturbance
- Existing Pad

**Federal WMC 24-17 Drill Pad
Soils Map**

TEP ROCKY MOUNTAIN, LLC
Exhibit prepared by: AJT
Date prepared: May 25, 2021

Rifle Area, Colorado, Parts of Garfield and Mesa Counties

12—Bucklon-Inchau complex, 25 to 50 percent slopes

Map Unit Setting

National map unit symbol: 2w4zj

Elevation: 7,000 to 9,500 feet

Mean annual precipitation: 18 to 22 inches

Mean annual air temperature: 37 to 39 degrees F

Frost-free period: 45 to 60 days

Farmland classification: Not prime farmland

Map Unit Composition

Bucklon and similar soils: 55 percent

Inchau and similar soils: 35 percent

Minor components: 10 percent

Estimates are based on observations, descriptions, and transects of the mapunit.

Description of Bucklon

Setting

Landform: Mountain slopes

Landform position (three-dimensional): Mountainflank

Down-slope shape: Linear

Across-slope shape: Linear

Parent material: Colluvium over residuum weathered from sandstone and shale

Typical profile

A - 0 to 10 inches: loam

Bw - 10 to 17 inches: clay loam

Cr - 17 to 59 inches: bedrock

Properties and qualities

Slope: 25 to 50 percent

Depth to restrictive feature: 10 to 20 inches to paralithic bedrock

Drainage class: Well drained

Capacity of the most limiting layer to transmit water (Ksat): Low to moderately high (0.00 to 0.28 in/hr)

Depth to water table: More than 80 inches

Frequency of flooding: None

Frequency of ponding: None

Maximum salinity: Nonsaline (0.0 to 1.0 mmhos/cm)

Available water capacity: Low (about 3.1 inches)

Interpretive groups

Land capability classification (irrigated): None specified

Land capability classification (nonirrigated): 7e

Hydrologic Soil Group: D

Ecological site: R048AY238CO

Hydric soil rating: No

Description of Inchau

Setting

Landform: Mountain slopes

Landform position (three-dimensional): Mountainflank

Down-slope shape: Convex

Across-slope shape: Linear

Parent material: Colluvium over residuum weathered from
sandstone and shale

Typical profile

A - 0 to 3 inches: loam

Bt - 3 to 18 inches: clay loam

C - 18 to 36 inches: gravelly clay loam

Cr - 36 to 59 inches: bedrock

Properties and qualities

Slope: 25 to 40 percent

Depth to restrictive feature: 20 to 40 inches to paralithic bedrock

Drainage class: Well drained

Capacity of the most limiting layer to transmit water (Ksat): Low to
moderately high (0.00 to 0.28 in/hr)

Depth to water table: More than 80 inches

Frequency of flooding: None

Frequency of ponding: None

Maximum salinity: Nonsaline (0.0 to 1.0 mmhos/cm)

Available water capacity: Low (about 5.6 inches)

Interpretive groups

Land capability classification (irrigated): None specified

Land capability classification (nonirrigated): 7e

Hydrologic Soil Group: C

Ecological site: R048AY238CO

Hydric soil rating: No

Minor Components

Jerry

Percent of map unit: 10 percent

Landform: Mountain slopes

Landform position (three-dimensional): Mountainflank

Down-slope shape: Convex

Across-slope shape: Convex

Ecological site: R048AY250CO

Hydric soil rating: No

Data Source Information

Soil Survey Area: Rifle Area, Colorado, Parts of Garfield and Mesa Counties

Survey Area Data: Version 13, Jun 5, 2020

Rifle Area, Colorado, Parts of Garfield and Mesa Counties

17—Cochetopa loam, 9 to 50 percent slopes

Map Unit Setting

National map unit symbol: 2w4zr

Elevation: 7,000 to 9,500 feet

Mean annual precipitation: 18 to 22 inches

Mean annual air temperature: 37 to 39 degrees F

Frost-free period: 45 to 75 days

Farmland classification: Not prime farmland

Map Unit Composition

Cochetopa and similar soils: 85 percent

Minor components: 15 percent

Estimates are based on observations, descriptions, and transects of the mapunit.

Description of Cochetopa

Setting

Landform: Mountain slopes

Down-slope shape: Linear

Across-slope shape: Linear

Parent material: Colluvium derived from volcanic and sedimentary rock

Typical profile

A - 0 to 19 inches: loam

Bt - 19 to 44 inches: stony clay

BCt - 44 to 60 inches: very stony clay

Properties and qualities

Slope: 9 to 50 percent

Depth to restrictive feature: More than 80 inches

Drainage class: Well drained

Capacity of the most limiting layer to transmit water

(Ksat): Moderately low to moderately high (0.07 to 0.21 in/hr)

Depth to water table: More than 80 inches

Frequency of flooding: None

Frequency of ponding: None

Maximum salinity: Nonsaline (0.0 to 1.0 mmhos/cm)

Available water capacity: Moderate (about 8.6 inches)

Interpretive groups

Land capability classification (irrigated): None specified

Land capability classification (nonirrigated): 7e

Hydrologic Soil Group: C

Ecological site: R048AY238CO

Hydric soil rating: No

Minor Components

Jerry, stony

Percent of map unit: 10 percent

Landform: Mountain slopes

Down-slope shape: Convex

Across-slope shape: Linear

Ecological site: R048AY250CO

Hydric soil rating: No

Lamphier

Percent of map unit: 5 percent

Landform: Mountain slopes

Down-slope shape: Concave

Across-slope shape: Concave

Ecological site: F048AY449CO

Hydric soil rating: No

Data Source Information

Soil Survey Area: Holy Cross Area, Colorado, Parts of Eagle, Garfield, Mesa, Pitkin, and Summit Counties

Survey Area Data: Version 3, Jun 11, 2020

Soil Survey Area: Rifle Area, Colorado, Parts of Garfield and Mesa Counties

Survey Area Data: Version 13, Jun 5, 2020

Rifle Area, Colorado, Parts of Garfield and Mesa Counties

71—Villa Grove-Zoltay loams, 15 to 30 percent slopes

Map Unit Setting

National map unit symbol: jnzb

Elevation: 7,500 to 7,600 feet

Farmland classification: Not prime farmland

Map Unit Composition

Villa grove and similar soils: 50 percent

Zoltay and similar soils: 40 percent

Estimates are based on observations, descriptions, and transects of the mapunit.

Description of Villa Grove

Setting

Landform: Alluvial fans, mountainsides

Landform position (three-dimensional): Lower third of mountainflank

Down-slope shape: Linear, convex

Across-slope shape: Linear, convex

Parent material: Mixed alluvium

Typical profile

H1 - 0 to 4 inches: loam

H2 - 4 to 15 inches: clay loam

H3 - 15 to 60 inches: loam

Properties and qualities

Slope: 15 to 30 percent

Depth to restrictive feature: More than 80 inches

Drainage class: Well drained

Runoff class: Very high

Capacity of the most limiting layer to transmit water

(Ksat): Moderately high (0.20 to 0.60 in/hr)

Depth to water table: More than 80 inches

Frequency of flooding: None

Frequency of ponding: None

Calcium carbonate, maximum content: 15 percent

Maximum salinity: Very slightly saline to moderately saline (2.0 to 8.0 mmhos/cm)

Available water capacity: Moderate (about 8.1 inches)

Interpretive groups

Land capability classification (irrigated): None specified

Land capability classification (nonirrigated): 6e

Hydrologic Soil Group: C

Ecological site: R048AY238CO

Hydric soil rating: No

Description of Zoltay

Setting

Landform: Alluvial fans, mountainsides

Landform position (three-dimensional): Lower third of mountainflank

Down-slope shape: Convex

Across-slope shape: Convex

Parent material: Mixed alluvium

Typical profile

H1 - 0 to 19 inches: loam

H2 - 19 to 23 inches: cobbly clay loam

H3 - 23 to 36 inches: cobbly clay

H4 - 36 to 60 inches: cobbly clay

Properties and qualities

Slope: 15 to 30 percent

Depth to restrictive feature: More than 80 inches

Drainage class: Well drained

Runoff class: Very high

Capacity of the most limiting layer to transmit water

(Ksat): Moderately low to moderately high (0.06 to 0.20 in/hr)

Depth to water table: More than 80 inches

Frequency of flooding: None

Frequency of ponding: None

Calcium carbonate, maximum content: 15 percent

Maximum salinity: Nonsaline to very slightly saline (0.0 to 2.0 mmhos/cm)

Available water capacity: Moderate (about 7.5 inches)

Interpretive groups

Land capability classification (irrigated): None specified

Land capability classification (nonirrigated): 6e

Hydrologic Soil Group: C

Ecological site: R048AY238CO

Hydric soil rating: No

Data Source Information

Soil Survey Area: Holy Cross Area, Colorado, Parts of Eagle, Garfield, Mesa, Pitkin, and Summit Counties

Survey Area Data: Version 3, Jun 11, 2020

Soil Survey Area: Rifle Area, Colorado, Parts of Garfield and Mesa Counties

Survey Area Data: Version 13, Jun 5, 2020